

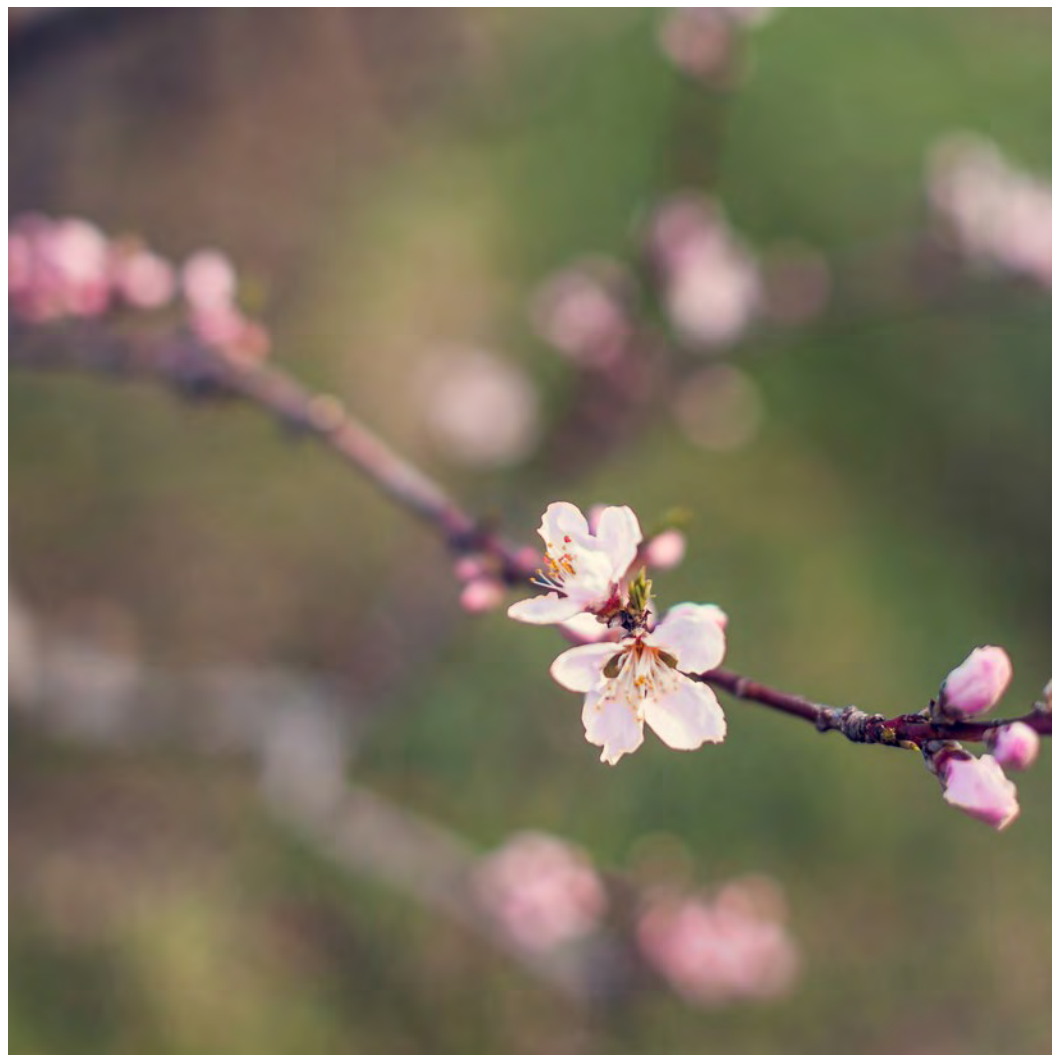
WOOL PEOPLE

Look Book



OUTPOST	4
I. A SHAWL STORY	8
Sandycove	10
Stones & Stripes	12
Tilt	16
Wheaten Wrap	18
Sandness	20
Moon & Stars	26
Frida	28
II. ON LOCATION	30
III. ROOTS	40
Fleur	42
Asilomar	44
Lira	46
Flying Squirrel	48
Wheaten Blanket	50
Hitch	52
Bolt	54
Reverb	56
Amherst	58
Kennebec	60
DESIGN BLUEPRINTS	64
YARN INFORMATION	98
MEET THE DESIGNERS	102
CREDITS	108





OUTPOST

Dear Knitters,

This week, the tulips and daffodils in my small urban garden are in full bloom. I love the feeling of planting bulbs in the fall and being rewarded with colorful flowers the following spring. The process is not so different from planting and growing a new design collection. Make a plan, sow the seeds, and months later behold something beautiful.



Releasing a new *Wool People* collection is such a happy moment for me. I feel lucky to get to work with a team of talented and creative people, both in-house on the production end and outside of BT with a group of gifted designers whose work you'll see featured in the following pages. Over several months, each contributor's efforts are woven together to create a finished product that is certainly greater than the sum of its parts. Today we announce our fifth installment in this series and hope you like what we've cooked up for you!

Warm breezes and vibrant blossoms now abound in the streets and gardens of both city and country. The warmer spring weather (as well as the shapes and colors of all that flora) never fails to incite my enthusiasm for lace knitting. For this issue I asked seven designers to give us their take on spring lace – the resulting work (*A Shawl Story*; page 8) features a great range of projects from simple to more involved, any of which make for perfect porch knitting as the days lengthen into summer.

If lace isn't your cup of tea, sweaters and accessories follow, alongside a photo essay of our days at Terhune Orchards in Princeton, New Jersey, where we photographed the collection. For those of you who like getting a jump on your Fall knitting early – be it sweaters, blankets or scarves – we've got those areas covered, too.

I hope this note finds you well – whether in a garden or anywhere else you spend your free time. Happy spring.

All my very best,

Jared Flood

WHAT IS WOOL PEOPLE?

Wool People is a semi-annual design series hosted by Brooklyn Tweed that features current work from independent handknitting designers from around the world.

With each collection, contributors are given the chance to realize design ideas that excite and challenge them. Finished designs and patterns are photographed and produced by BT's creative team.

Upon release of each collection, patterns are made available to knitters as downloadable PDF files. A generous portion of each pattern sale goes directly to the individual designer for the lifetime of that pattern.

We believe that compensating designers fairly for their work is an important part of sustaining creative energy and quality design in our industry.

We also believe in the power of creative collaboration. Working with so many talented people – connected by a deep passion for knitting – is a true joy.





A SHAWL STORY

FEATURING DESIGNS FROM

Nancy Bush

Kieran Foley

Hiroko Fukatsu

Anne Hanson

Gudrun Johnston

Shui Kuen Kozinski

Leila Raabe

SANDYCOVE

Kieran Foley







STONES & STRIPES

Nancy Bush



TILT

Leila Raabe





WHEATEN

WRAP VERSION

Anne Hanson



SANDNESS

SMALL VERSION

Gudrun Johnston



SANDNESS

LARGE VERSION

Gudrun Johnston







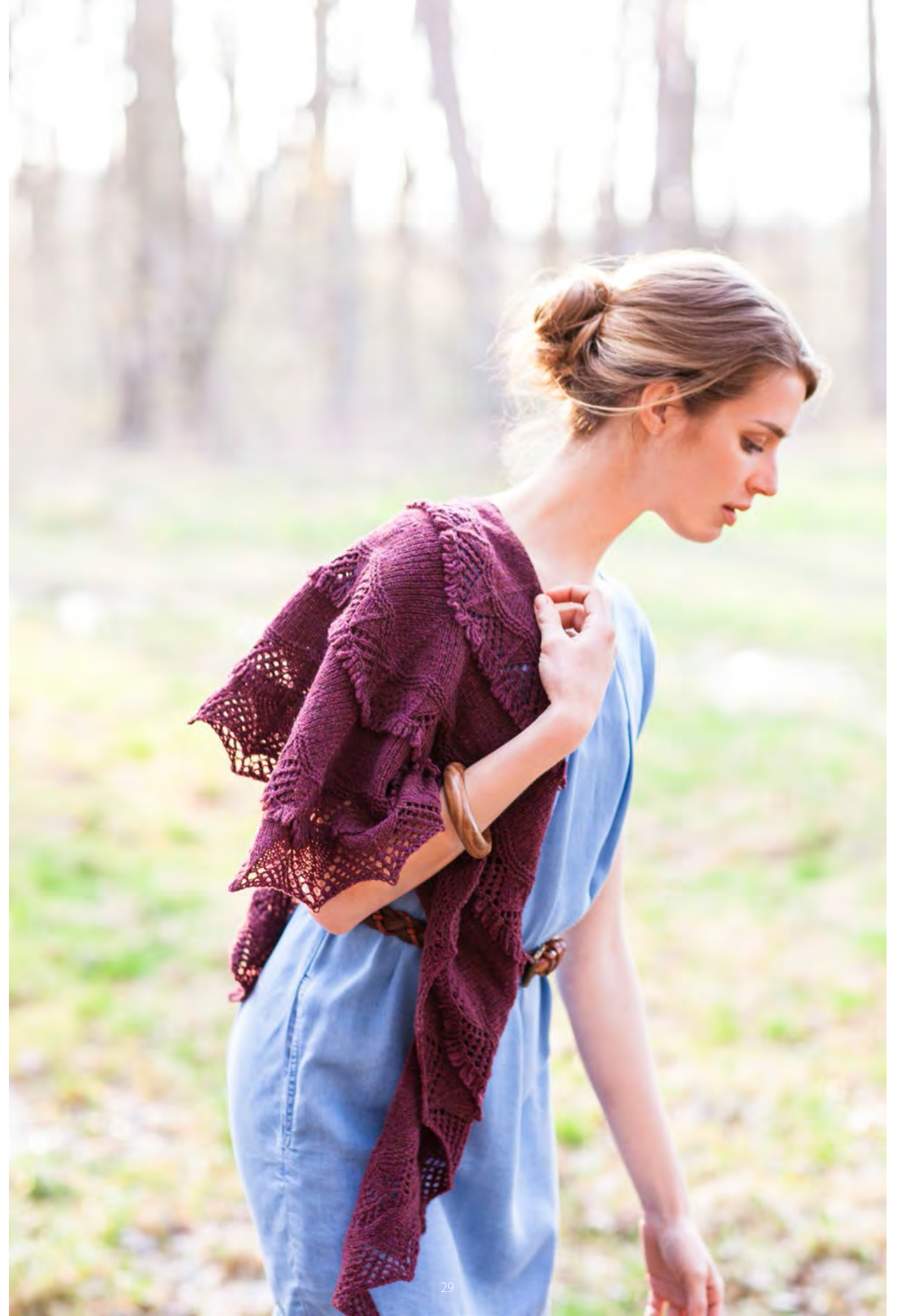
MOON & STARS

Shui Kuen Kozinski



FRIDA

Hiroko Fukatsu



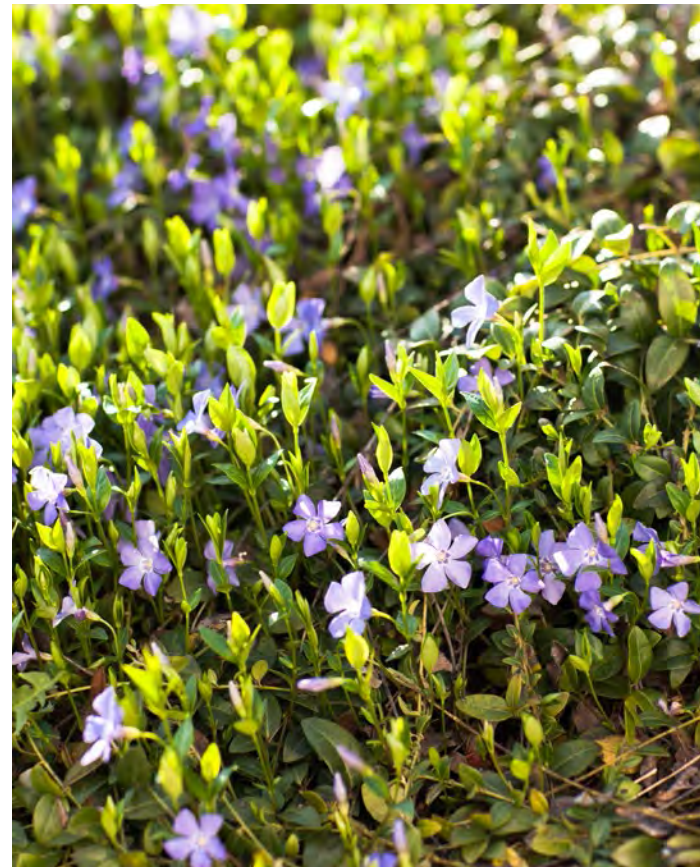
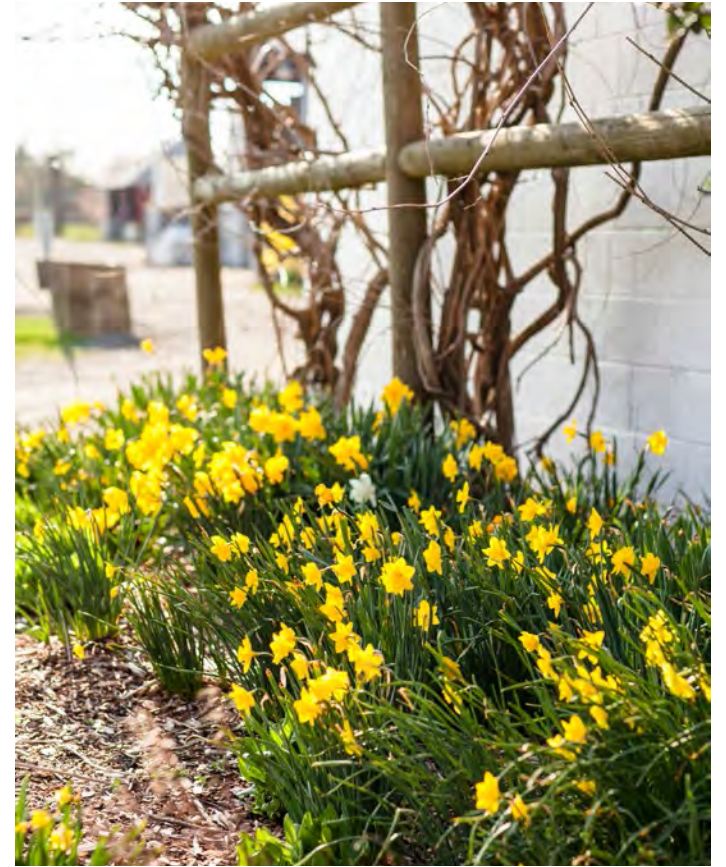
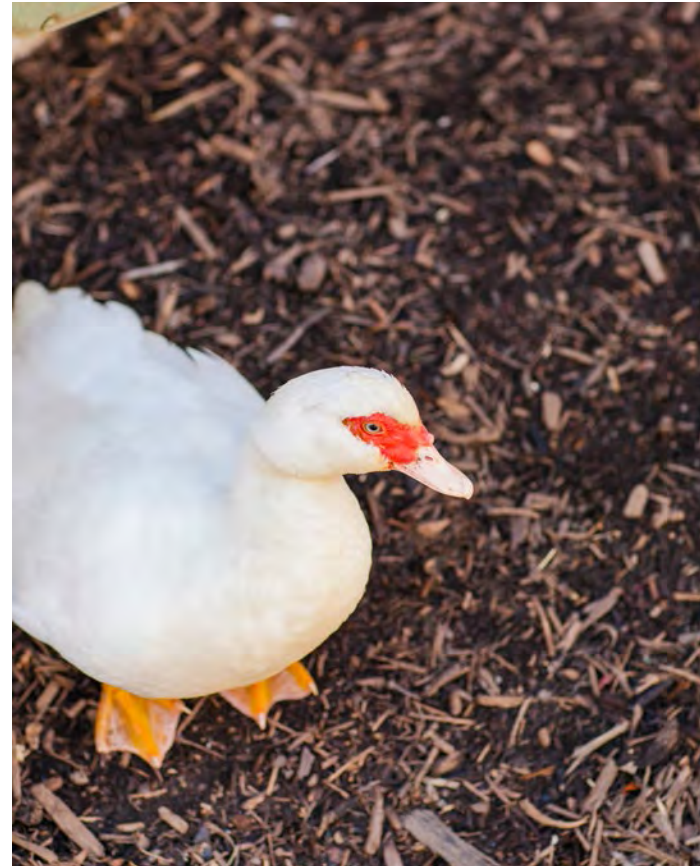


ON LOCATION
TERHUNE ORCHARDS
PRINCETON, NJ









ROOTS

FEATURING DESIGNS FROM

Dawn Catanzaro

Tanis Lavallée

Amy Christoffers

Ann McCauley

Yoko Hatta

Michiyo

Anne Hanson

Mercedes Tarasovich-Clark

Amy Herzog

Veera Välimäki



FLEUR
Yoko Hatta



ASILOMAR

Amy Herzog





LIRA

Amy Christoffers



FLYING SQUIRREL

Michiyo



WHEATEN

BLANKET VERSION

Anne Hanson



HITCH

Mercedes Tarasovich-Clark



BOLT

Veera Välimäki





REVERB

Tanis Lavallée



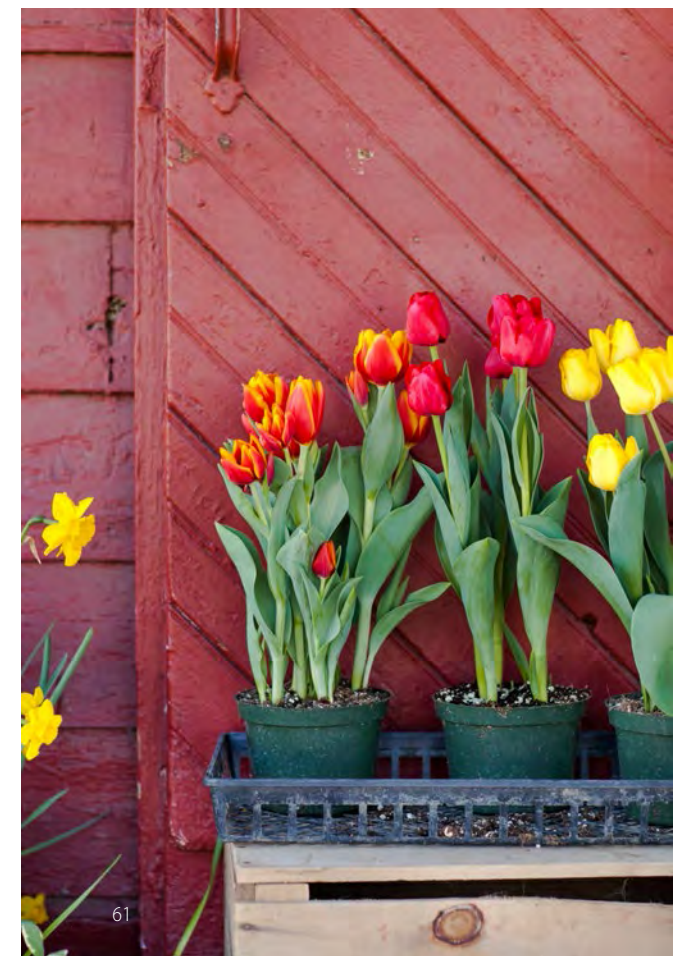
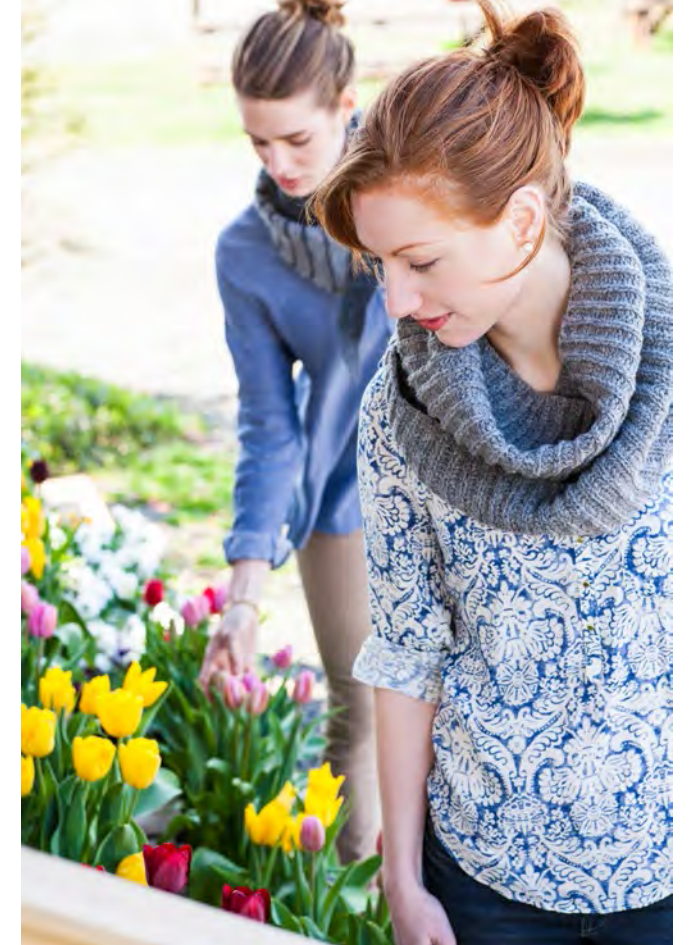


AMHERST
Ann McCauley

KENNEBEC

DEEP VERSION

Dawn Catanzaro





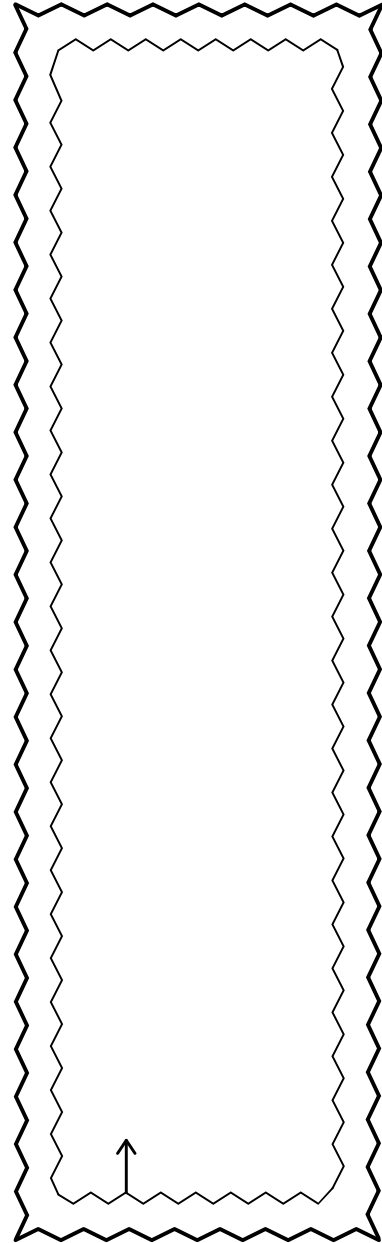
KENNEBEC

MEDIUM VERSION

Dawn Catanzaro



DESIGN
BLUEPRINTS



SANDYCOVE

by Kieran Foley



FINISHED DIMENSIONS

Narrow Shawl (Wide Shawl)
19½ (26¼)" wide and 70½" long

MATERIALS

3 (4) skeins of Brooklyn Tweed *Loft*
Wide version photographed in color *Faded Quilt*

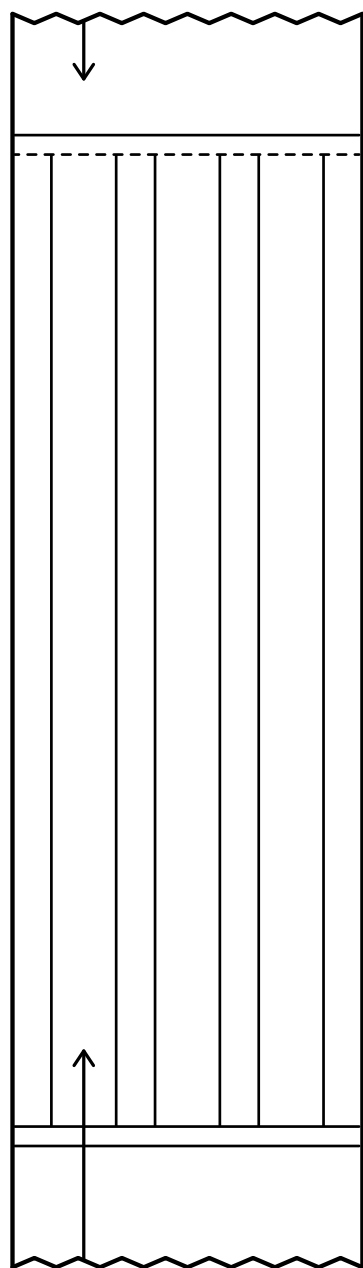
GAUGE

14 stitches & 22 rows = 4" in blocked stockinette stitch
Measurement taken from relaxed fabric after light lace-blocking

DESIGN DETAILS

One-piece construction, worked from end to end, knitted lace border (patterning worked on RS/WS) frames center panel of stockinette, open-gauge fabric

[CLICK PHOTO TO PURCHASE PATTERN PDF](#)



STONES & STRIPES

by Nancy Bush



FINISHED DIMENSIONS

18" wide and 64" long, after blocking

MATERIALS

3 skeins of Brooklyn Tweed *Loft*

Photographed in color *Postcard*

GAUGE

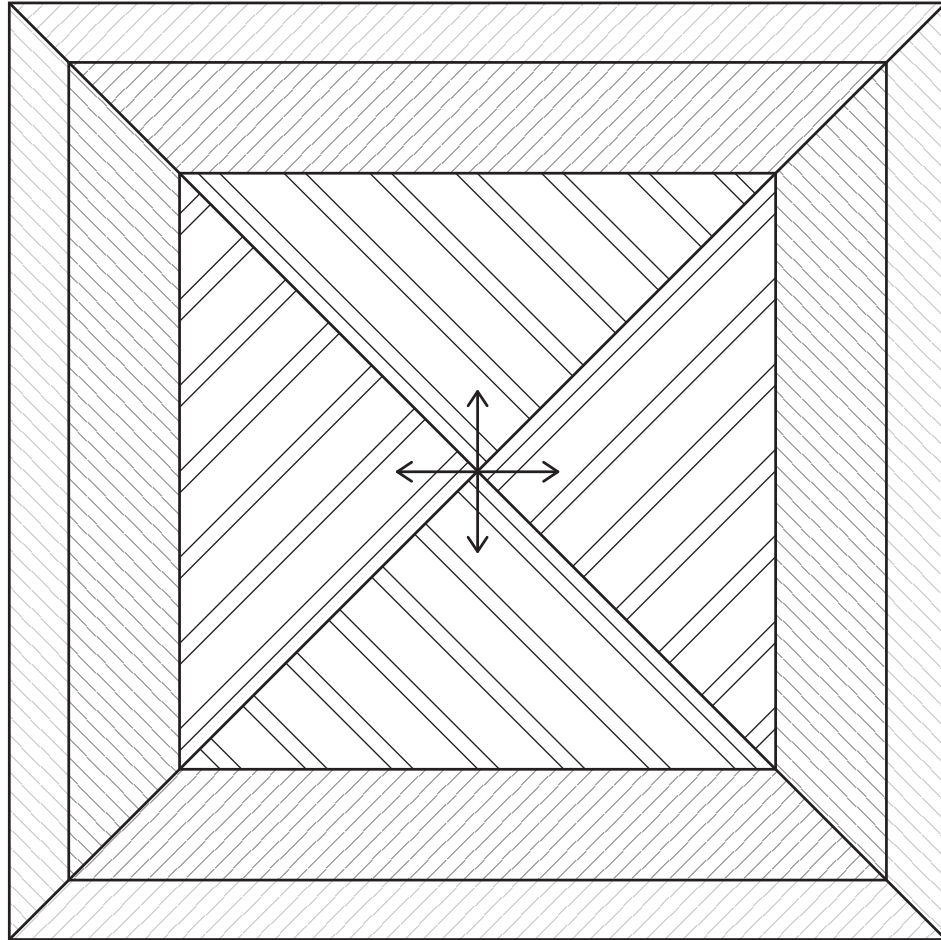
18 stitches & 31 rows = 4" in blocked lace pattern

Measurement taken from relaxed fabric after light lace-blocking

DESIGN DETAILS

Two-piece construction, top edging is grafted to scarf (along dotted line) to create mirrored ends, Estonian "stone" lace motif interspersed with columns of nupps on a garter stitch ground

[CLICK PHOTO TO PURCHASE PATTERN PDF](#)



TILT

by Leila Raabe



FINISHED DIMENSIONS

41" square

MATERIALS

5 skeins of Brooklyn Tweed *Loft*
Photographed in color *Truffle Hunt*

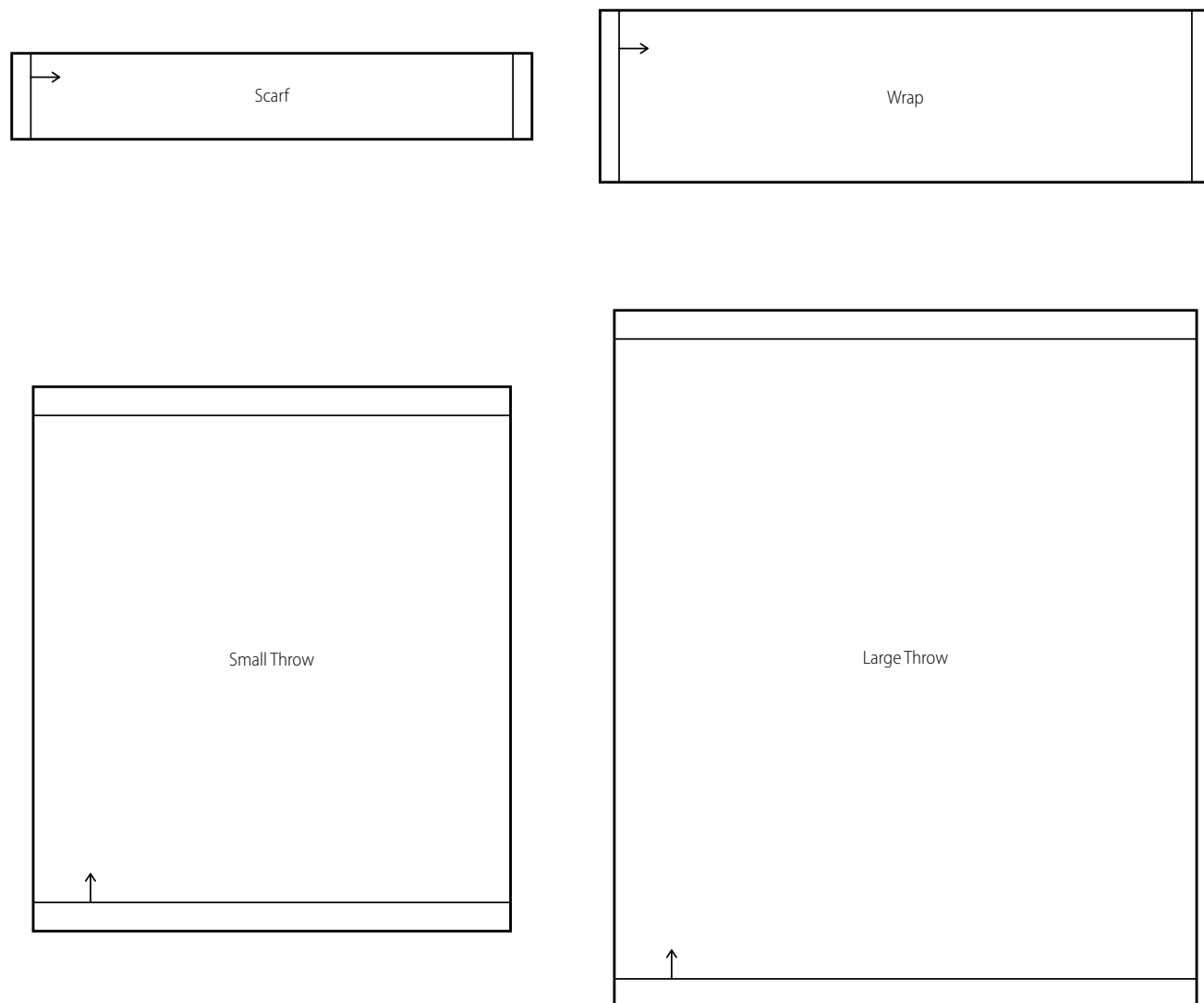
GAUGE

20 stitches & 36 rows = 4" in circular stockinette stitch, after blocking

DESIGN DETAILS

One-piece construction, knit circularly from center out, graphic eyelet pattern radiates from center, alternating diagonal stripes of moss stitch & stockinette, lace-leaf edging detail, alternate mesh edging included (optional)

[CLICK PHOTO TO PURCHASE PATTERN PDF](#)



WHEATEN

by Anne Hanson



FINISHED DIMENSIONS

Four versions included for each of two yarns
See pattern page URL for specific amounts

MATERIALS

Sizes written for both Brooklyn Tweed *Loft* & *Shelter*

See pattern page URL for specific amounts

Loft: Wrap version photographed in color *Blanket Fort*

Shelter: Large throw version photographed in color *Stormcloud*

GAUGE

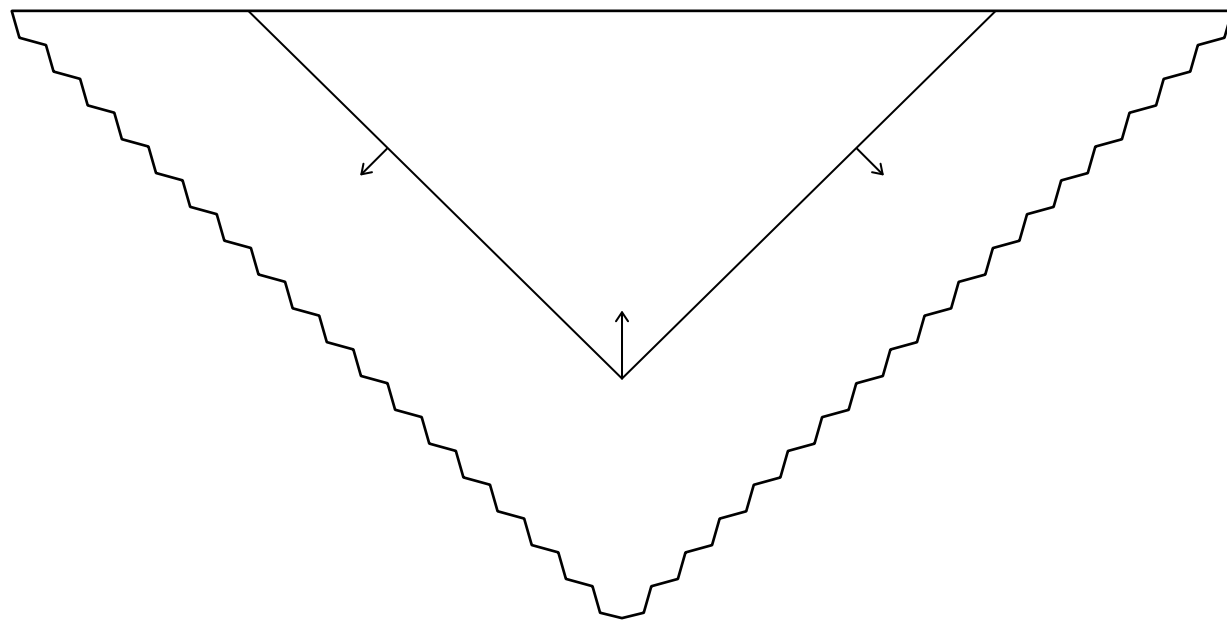
Loft: 25 stitches & 30 rows = 4" over blocked lace & cable pattern

Shelter: 22 stitches & 27 rows = 4" over blocked lace & cable pattern

DESIGN DETAILS

One-piece construction, worked flat from end to end, four size options available in each of two yarns, integrated rib hem detail, allover lace & cable columnar motif

CLICK PHOTO TO PURCHASE PATTERN PDF



SANDNESS

by Gudrun Johnston



FINISHED DIMENSIONS

50½ (62¼)" wingspan; 25¼ (31)" height at center spine

MATERIALS

3 (4) skeins of Brooklyn Tweed *Loft*

Photographed in color *Artifact* (small version) and *Long Johns* (large version)

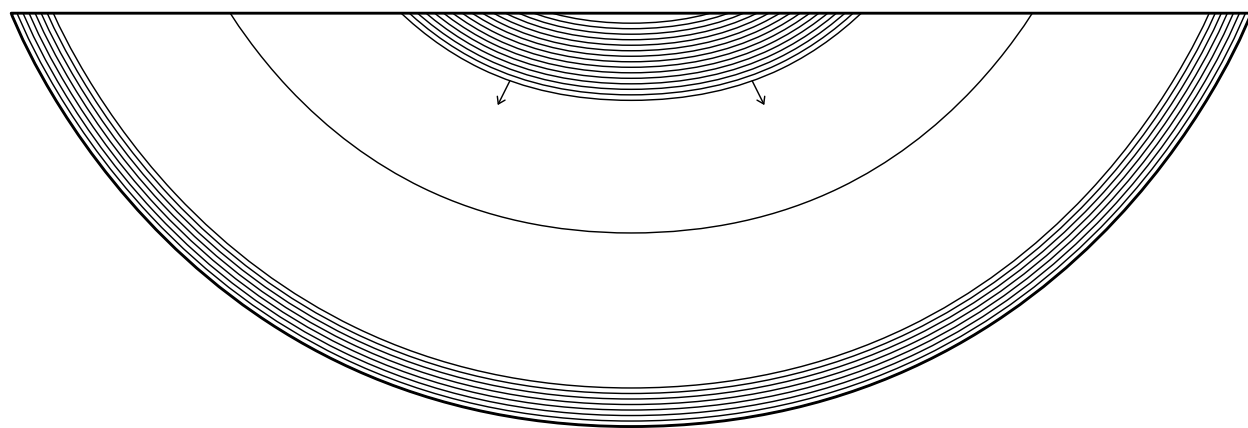
GAUGE

23 stitches & 36 rows = 4" in blocked stockinette stitch

DESIGN DETAILS

One-piece construction, stockinette center triangle is knit first from point to top edge, textured border is picked up from eyelet edging of center triangle and worked outward towards bottom edge, invisible spine increases, welted garter chevron border

CLICK PHOTO TO PURCHASE PATTERN PDF



MOON & STARS

by Shui Kuen Kozinski



FINISHED DIMENSIONS

72" wingspan, 24" height at shawl center

MATERIALS

4 skeins of Brooklyn Tweed *Loft*
 Photographed in color *Old World*

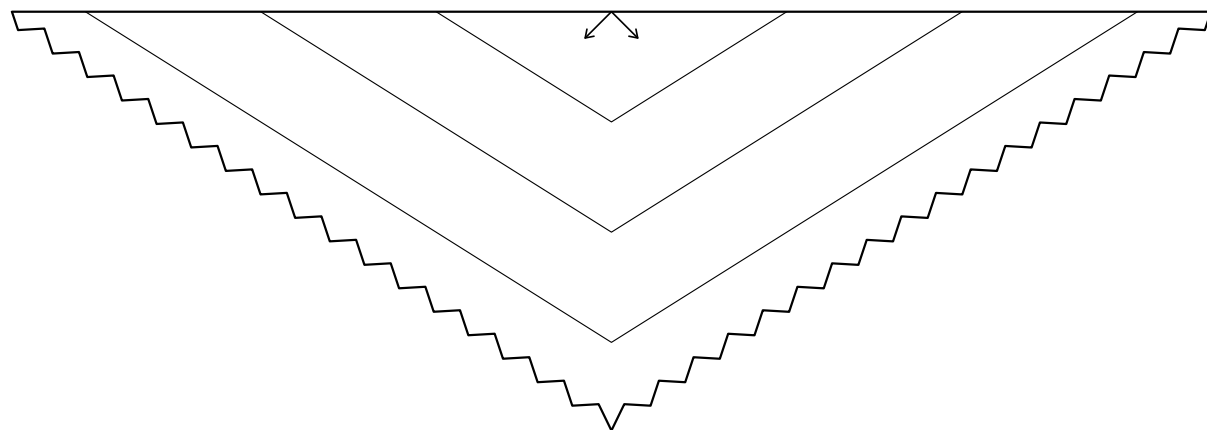
GAUGE

18 stitches & 26 rows = 4" over blocked lace pattern

DESIGN DETAILS

One-piece construction, worked flat from the center out, crescent moon shape, welted crescent at center neck, gathered "star stitch" lace motifs, welted hem

CLICK PHOTO TO PURCHASE PATTERN PDF



FRIDA

by Hiroko Fukatsu



FINISHED DIMENSIONS

62" wingspan and 20½" height at center spine

MATERIALS

3 skeins of Brooklyn Tweed *Loft*

Photographed in color *Homemade Jam*

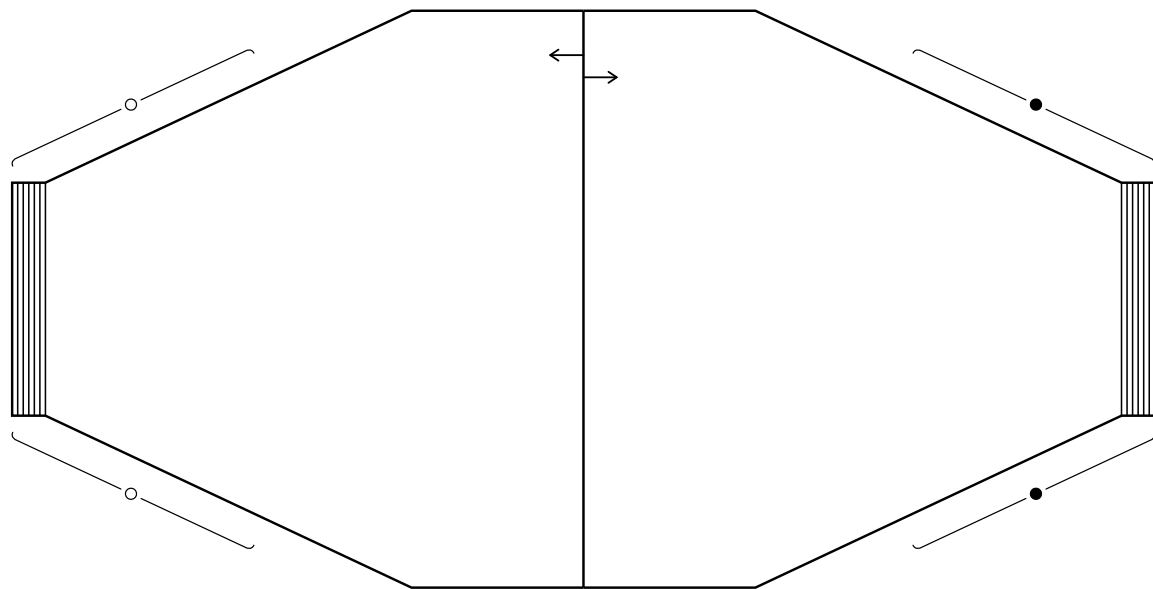
GAUGE

22 stitches & 32 rows = 4" in blocked stockinette stitch

DESIGN DETAILS

One-piece construction, knit flat from top-center down, banded eyelet triangle motif combined with loop stitch for added texture, scalloped edging, invisible spine increases

CLICK PHOTO TO PURCHASE PATTERN PDF



FLEUR

by Yoko Hatta



FINISHED DIMENSIONS

To fit approximate bust sizes 32-34 (36-38, 40-42, 44-46, 48-50)"

Sample shown is first size shown on model with 34" bust

MATERIALS

5 (5, 5, 6, 6) skeins of Brooklyn Tweed *Loft*

Photographed in color *Plume*

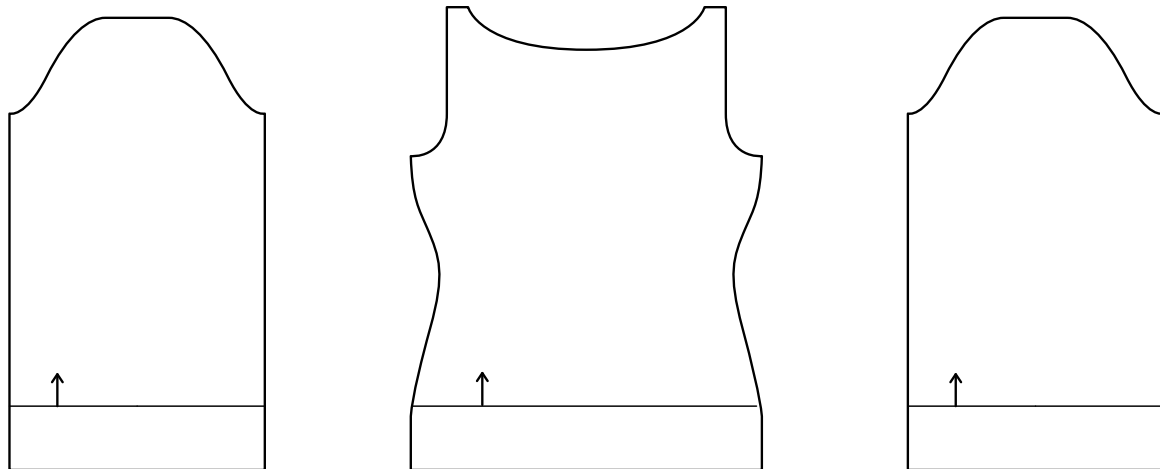
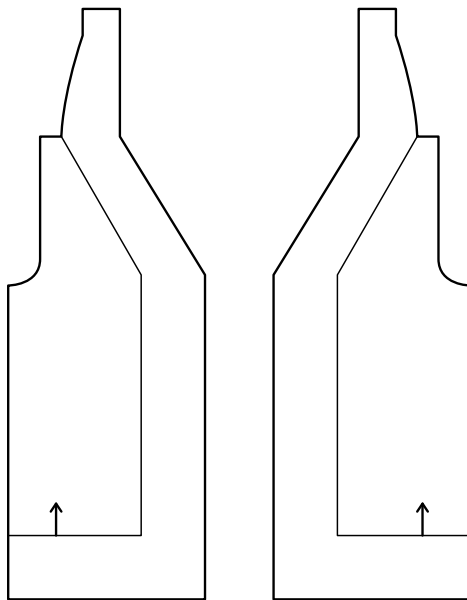
GAUGE

23 stitches & 36 rows = 4" in blocked lace pattern

DESIGN DETAILS

One-piece construction, knit from center line out toward cuffs, garter stitch trims, allover lace flower pattern, garter stitch band picked-up and worked circularly around body opening

CLICK PHOTO TO PURCHASE PATTERN PDF



ASILOMAR

by Amy Herzog



FINISHED DIMENSIONS

(30, 32, 33½, 35½) (37, 39, 42½) (46, 49½, 53)" circumference at bust

Intended Ease: + 1-2"

Sample shown is size 35½" with 1½" ease on model

MATERIALS

(6, 6, 7, 7) (8, 8, 9) (10, 11, 12) skeins of Brooklyn Tweed *Shelter*

Photographed in color *Snowbound*

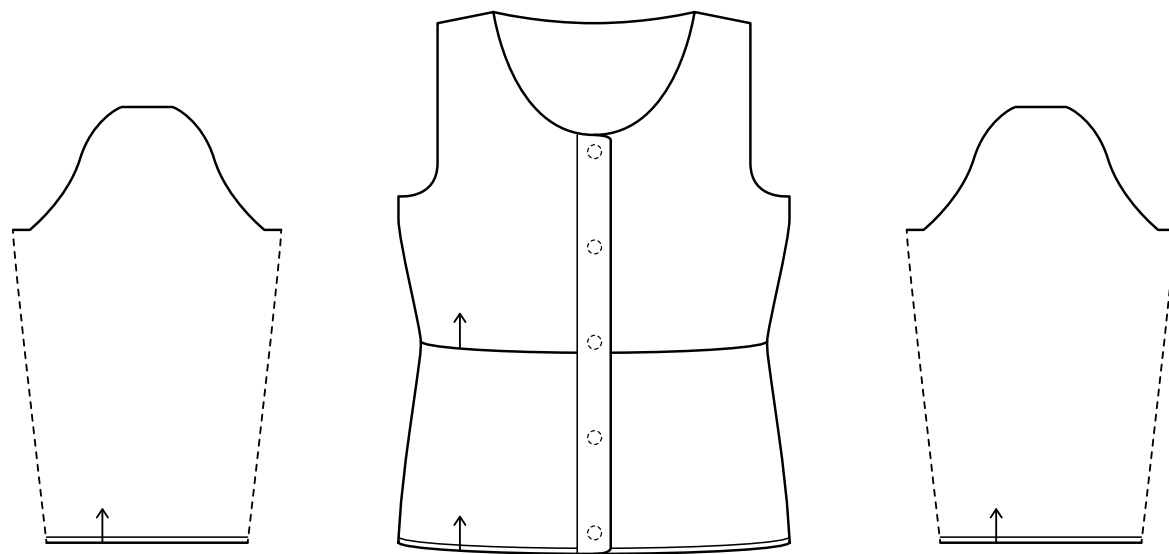
GAUGE

18 stitches & 26 rows = 4" in blocked stockinette stitch

DESIGN DETAILS

Five-piece construction, knit flat from the bottom up, seamed, set-in sleeve, waist shaping darts worked on back only, unshaped sleeve, deep lace cuffs and bands

CLICK PHOTO TO PURCHASE PATTERN PDF



LIRA

by Amy Christoffers



FINISHED DIMENSIONS

32¾ (36½, 40, 43½, 47, 50½)" garment at bust

Intended Ease: +1-2½"

Sample shown is size 36½" with +2½" ease on model

MATERIALS

6 (7, 8, 8, 9, 10) skeins of Brooklyn Tweed *Shelter*

Photographed in color *Fauna*

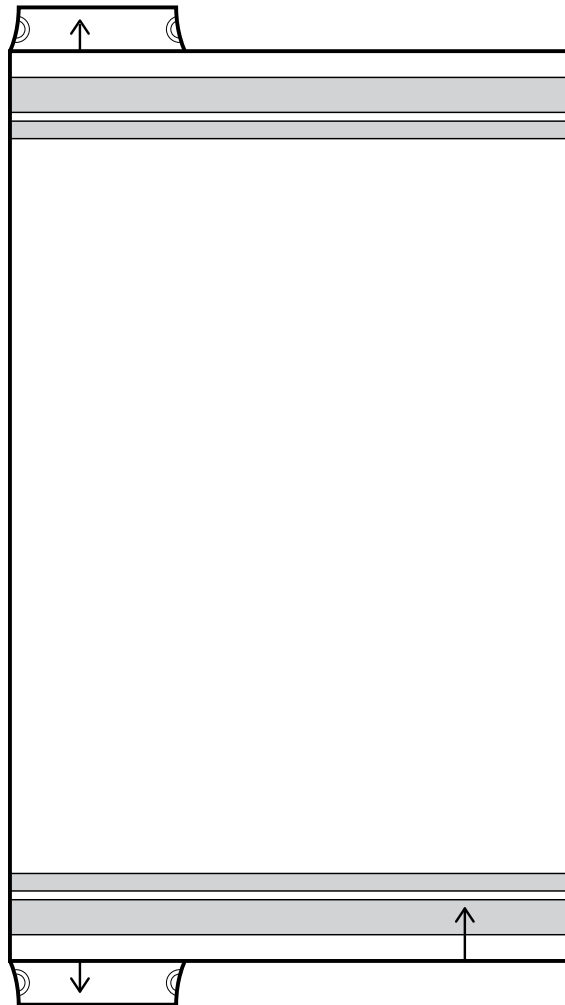
GAUGE

18 stitches & 27 rounds = 4" in blocked stockinette stitch

DESIGN DETAILS

Three-piece construction, knit from the bottom up, seamed, set-in sleeves, body worked as one piece to underarm, sleeve worked circularly from cuff to underarm, fitted, three-quarter sleeve, scoop neck, faux-seam side detailing, l-cord trim, bind-off chain waist detail

CLICK PHOTO TO PURCHASE PATTERN PDF



FLYING SQUIRREL

by Michiyo



FINISHED DIMENSIONS

To fit approximate bust size 32-34 (36-38, 40-42, 44-46, 48-50)"
Sample shown is first size shown on model with 34" bust

MATERIALS

Brooklyn Tweed *Shelter*
8 (9, 9, 9, 9) skeins MC and 1 skein CC
Photographed in colors *Woodsmoke* (MC) and *Old World* (CC)

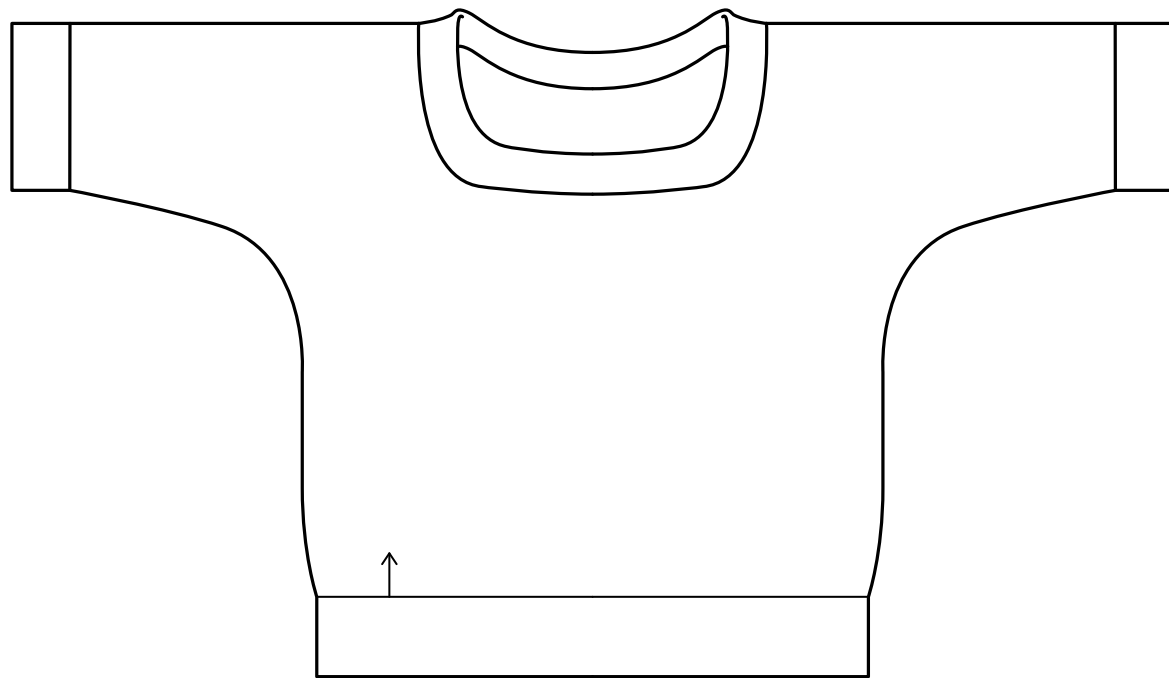
GAUGE

16½ stitches & 24½ rows = 4" in blocked broken rib pattern

DESIGN DETAILS

One-piece construction, knit flat from end to end, ribbed cuffs picked up and worked circularly from finished rectangle, allover broken rib pattern, stripes worked in contrasting color at each end, can be worn as a loose-fitting wrap cardigan or as a large stole around the neck

CLICK PHOTO TO PURCHASE PATTERN PDF



HITCH

by Mercedes Tarasovich-Clark



FINISHED DIMENSIONS

38 (39¾, 43½, 47½, 52)" garment at bust

Intended Ease: +4-5"

Sample shown is size 38" with +4" of ease on model

MATERIALS

6 (6, 7, 7, 8) skeins of Brooklyn Tweed *Loft*

Photographed in color *Tent*

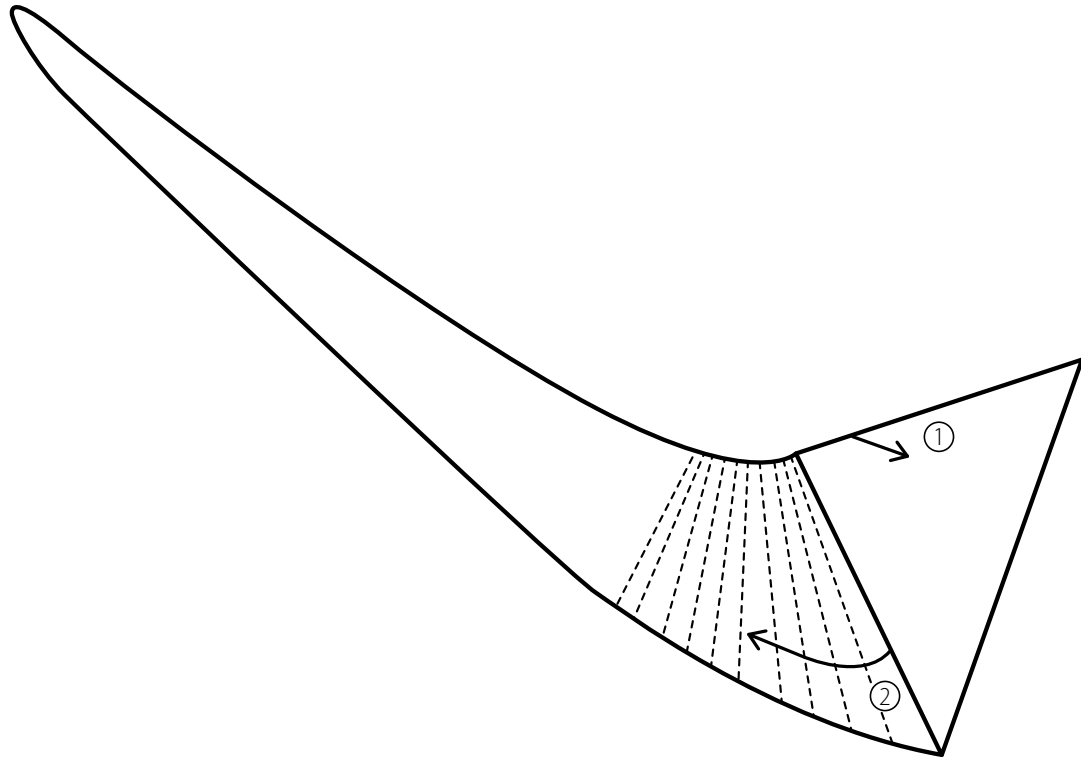
GAUGE

23 stitches & 34 rows = 4" in blocked stockinette stitch

DESIGN DETAILS

Two-piece construction, worked flat from the bottom up, seamed, dolman sleeve, relaxed fit, panel of eyelet chain cables on front only, deep garter stitch hem, cuff & neckband, shaped boat neck, lightweight fabric

CLICK PHOTO TO PURCHASE PATTERN PDF



BOLT

by Veera Välimäki



FINISHED DIMENSIONS

30½" length along hypotenuse of triangle 1; 72¼" along hypotenuse of triangle 2

MATERIALS

Brooklyn Tweed *Loft*

2 skeins MC and 2 skeins CC

Photographed in *Sweatshirt* (MC) and *Soot* (CC)

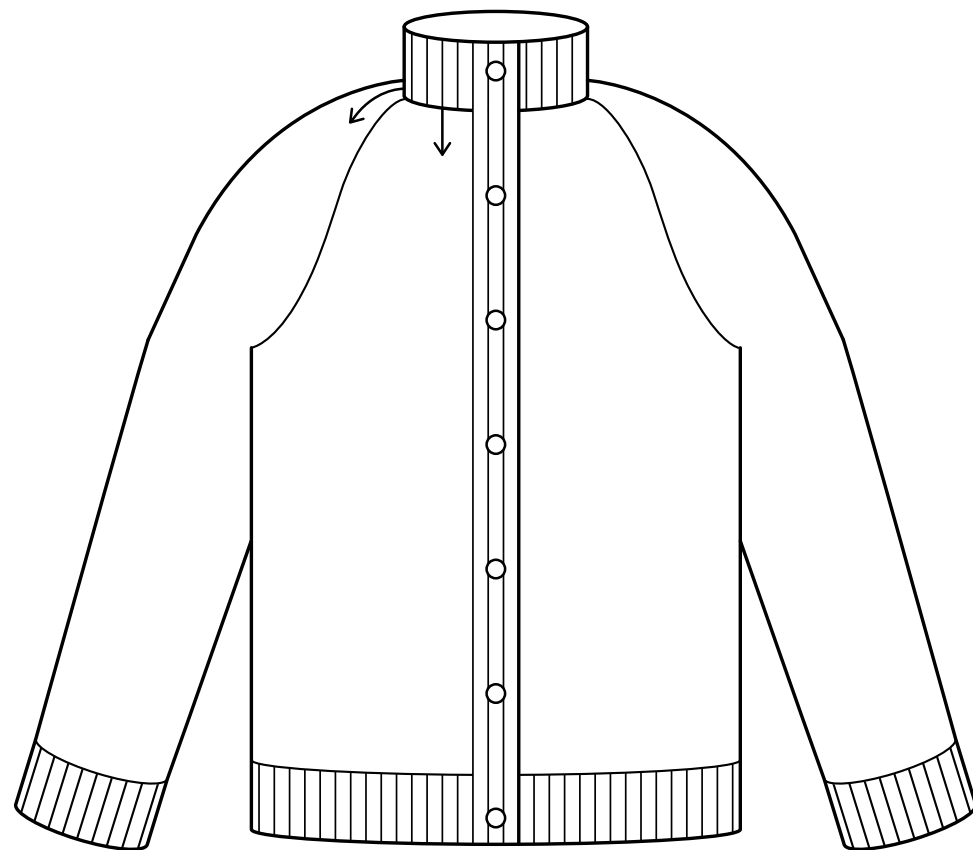
GAUGE

18 stitches & 32 rows = 4" in blocked garter stitch

DESIGN DETAILS

One-piece construction, knit flat, triangle 1 knit first, triangle 2 picked up and knit directly from triangle 1, varying striping sequences, short-row curve with striping pattern to accentuate shaping, final portion of triangle 2 worked as a solid color

[CLICK PHOTO TO PURCHASE PATTERN PDF](#)



REVERB

by Tanis Lavallée



FINISHED DIMENSIONS

32½ (35, 36½, 41, 44½, 47¾)" garment at bust (including button bands)

Intended Ease: +1-3"

Sample shown is size 35" with +1" ease on model

MATERIALS

7 (8, 8, 9, 10, 11) skeins of Brooklyn Tweed *Shelter*

Photographed in color *Hayloft*

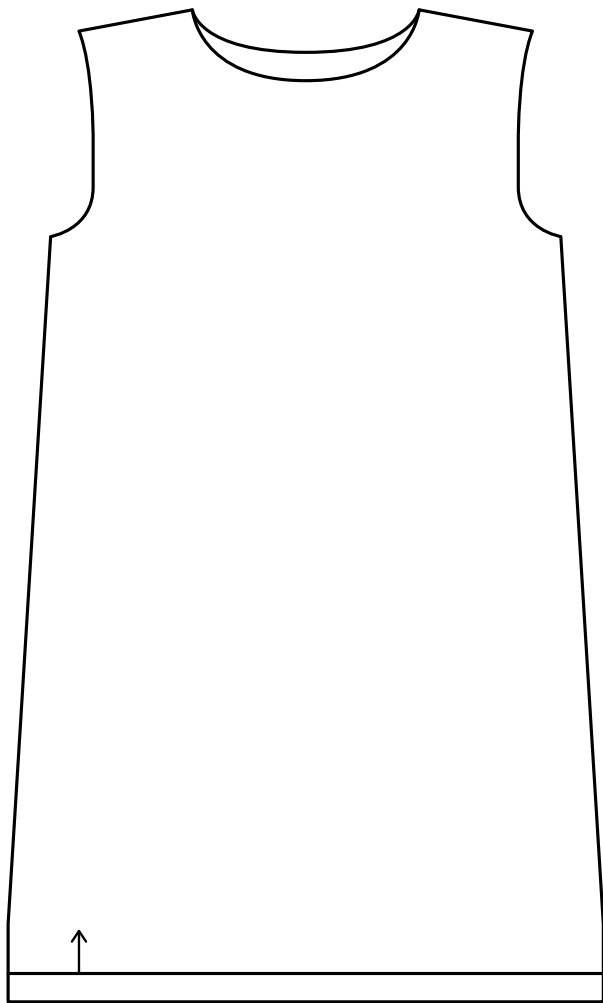
GAUGE

20 stitches & 28 rows/rounds = 4" in blocked stockinette stitch

DESIGN DETAILS

Circular construction, worked from the top down, raglan yoke, sleeves worked circularly, body worked back and forth, ribbed cuff, hem & buttonband, stand-up collar, zig-zag cable panels on back and fronts, slim fit, no waist shaping

CLICK PHOTO TO PURCHASE PATTERN PDF



AMHERST

by Ann McCauley



FINISHED DIMENSIONS

33 (35½, 39, 43½, 48, 51½)" finished garment at bust

Intended Ease: +2-4"

Sample shown is size 35½" with 1½" ease on model

MATERIALS

7 (8, 9, 10, 11, 12) skeins of Brooklyn Tweed *Shelter*

Photographed in color *Barn Owl*

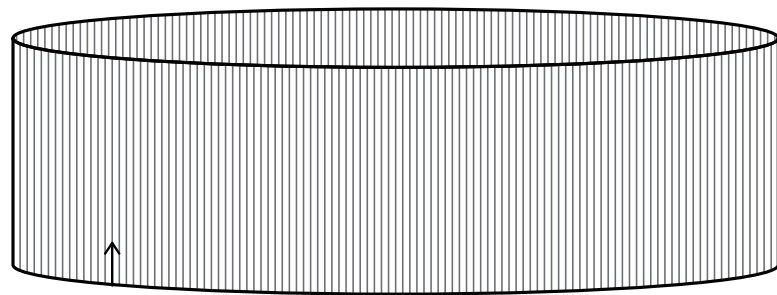
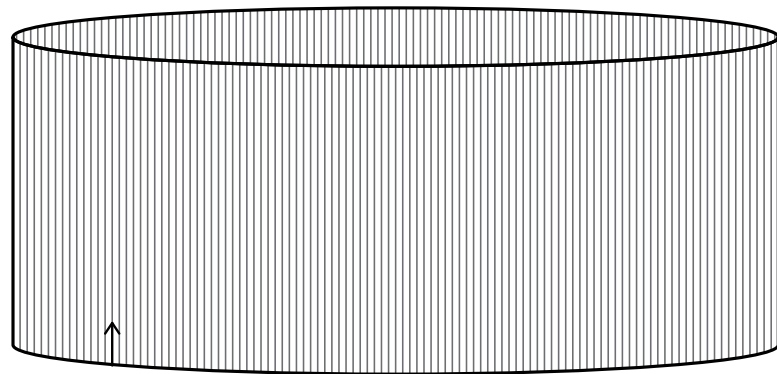
GAUGE

18 stitches & 28 rows = 4" in blocked reverse stockinette stitch

DESIGN DETAILS

Two-piece construction, knit flat from the bottom up, seamed, cabled-rib hemline longer in back than front, sleeveless, reverse stockinette trim at armhole and neck opening, Tudor grillwork cable detailing on yoke, vertical cable detailing on body of dress, A-line silhouette

CLICK PHOTO TO PURCHASE PATTERN PDF



KENNEBEC

by Dawn Catanzaro



FINISHED DIMENSIONS

58" circumference and 8 (11)" depth

MATERIALS

4 (5) skeins of Brooklyn Tweed *Loft* (held double stranded), or
3 (4) skeins of Brooklyn Tweed *Shelter* (held single stranded)

Medium Version shown with *Shelter* in color *Sap*

Deep Version shown with *Loft* (held double) in color *Sweatshirt*

GAUGE

12 stitches and 40 rounds = 4" in blocked brioche stitch

DESIGN DETAILS

One-piece construction, worked circularly from the bottom up, allover brioche stitch, tubular cast-on and bind-off tutorials included, holding Loft double enhances stitch definition and sponginess, can be worn as a long loop or double-wrapped for cowl styling

[CLICK PHOTO TO PURCHASE PATTERN PDF](#)



BROOKLYN TWEED YARNS

Grown in northeastern Wyoming; spun with care in historic Harrisville, New Hampshire



SHELTER

worsted weight

50 gram skein/140 yards
4-5 stitches per inch
woolen 2-ply construction
\$12.50

click thumbnail to purchase
available in 32 colors



LOFT

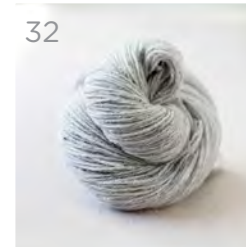
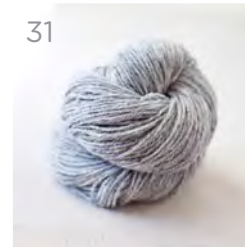
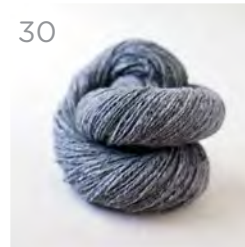
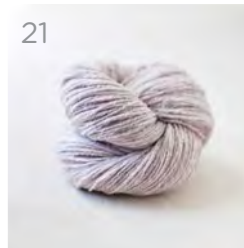
fingering weight

50 gram skein/275 yards
6-9 stitches per inch
woolen 2-ply construction
\$14.50

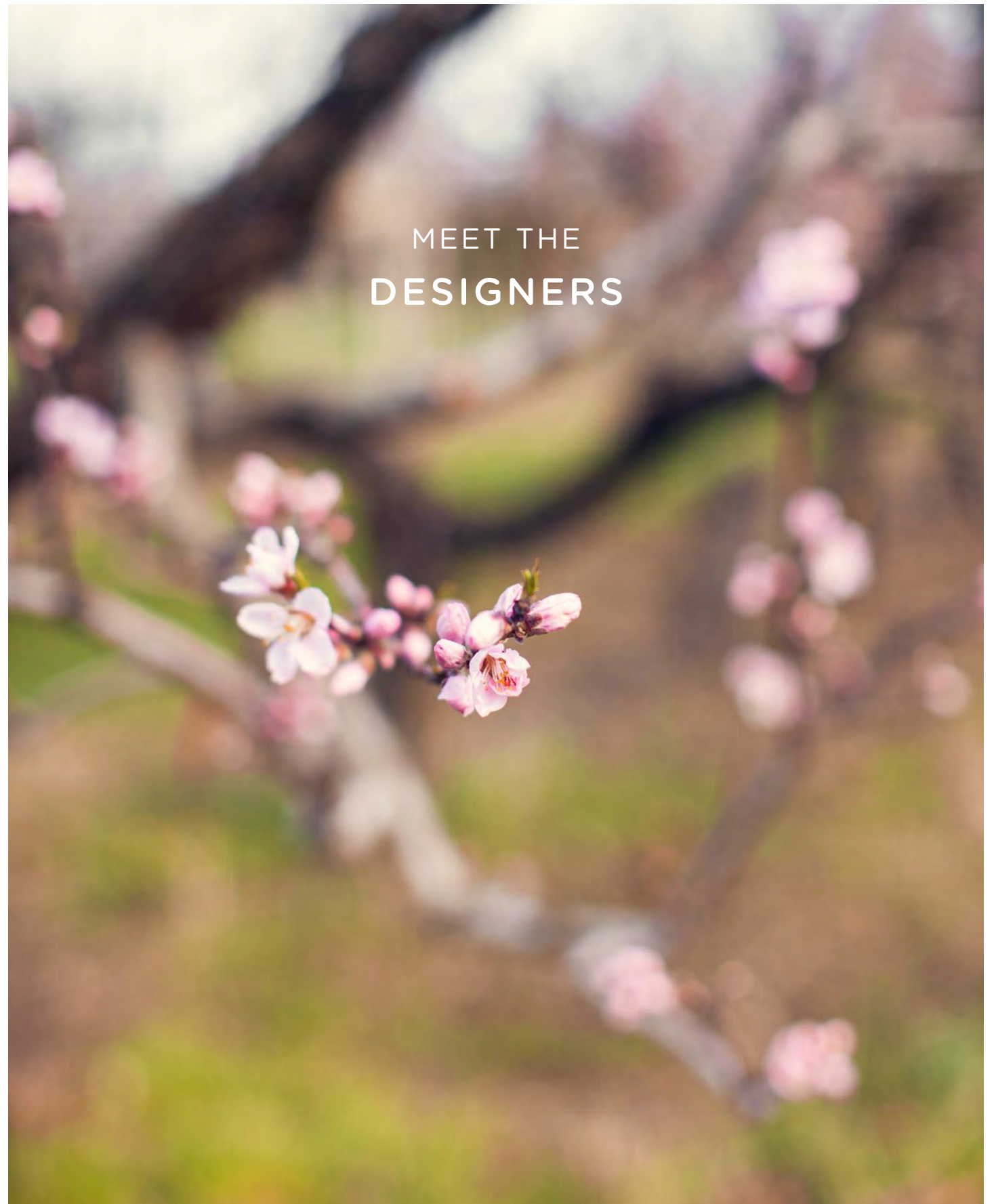
click thumbnail to purchase
available in 32 colors

A WOOL OF MANY COLORS

Our 32 custom heathers are blended from 11 base solids to achieve a unique cross-range harmony



- 1 Homemade Jam
- 2 Long Johns
- 3 Camper
- 4 Wool Socks
- 5 Embers
- 6 Hayloft
- 7 Sap
- 8 Fauna
- 9 Foothills
- 10 Tent
- 11 Birdbook
- 12 Button Jar
- 13 Artifact
- 14 Faded Quilt
- 15 Stormcloud
- 16 Almanac
- 17 Old World
- 18 Thistle
- 19 Plume
- 20 Blanket Fort
- 21 Postcard
- 22 Fossil
- 23 Woodsmoke
- 24 Barn Owl
- 25 Nest
- 26 Truffle Hunt
- 27 Meteorite
- 28 Pumpernickel
- 29 Cast Iron
- 30 Soot
- 31 Sweatshirt
- 32 Snowbound





NANCY BUSH is an author, designer and knitting instructor whose passion is the traditional knitting of Estonia. Her work has been featured in countless book and magazine publications over a multi-decade career in the handknitting industry.

She lives in Salt Lake City, Utah.

www.woolywest.com



DAWN CATANZARO works as a technical editor and sometime designer in the lovely city of Portland, Maine.

A list of her favorite things would include cables, short-rows, potatoes, and David Bowie. When not editing or knitting, she can be found strolling the streets of Portland, or speaking her mind on her blog:

dawncatanzarodesigns.wordpress.com



HIROKO FUKATSU lives and works in Tokyo with her husband and their Shiba Inu.

As a small child she learned to knit from her mother, and later in life began modifying existing patterns to suit her own creative ideas. This process gave her the knowledge and technical experience she needed to start publishing her own designs.

Roko's designs are popular in Japan on both Ravelry and her blog, where she enjoys sharing her continual fascination with knitting to audiences in Japan and abroad.

rokoknit.blog93.fc2.com



ANNE HANSON A lifelong knitter with a background in fashion and graphic design, Anne began designing knitwear and accessories in the

1970s. She is the owner and designer behind *Knitspot* where she houses her extensive design collection.

Anne lives and works in Ohio with David, who loves wool too.

www.knitspot.com



AMY CHRISTOFFERS is a knitwear designer living in rural Vermont with her husband, son and cat. They live in a tiny house surrounded by trees and stuffed full of books and yarn.

www.savoryknitting.com



KIERAN FOLEY is a knitwear designer from Dublin, Ireland. The sea is a favorite theme in his work.

Find more of his intelligent pattern designs by visiting his website below, or check out photographs of his travels and inspirations at *KnitLab*.

www.kieranfoley.com

www.knitlab.wordpress.com



YOKO HATTA is a renown Japanese knitwear designer, known there for her label *Kazekobo*.

Yoko began her career designing boutique knitwear in Tokyo over 30 years ago. Soon after she began designing for handknitters and has been doing so ever since.

She lives and works in Tokyo.

www.kazekobo.net



AMY HERZOG has been knitting since she was a small child and is passionate about sweaters that fit and flatter the wearer.

Her designs have been published in *Knitscene* and *Twist Collective*. She is the author of *Knit to Flatter* (STC Craft) and writes regularly about her knitting, modifying patterns to suit your particular needs, and loving your body at www.amyherzogdesigns.com. Find Amy on Ravelry as *amyherzog*.



GUDRUN JOHNSTON is a Scottish knitwear designer born in the Shetland Islands. Her work often incorporates traditional Shetland techniques and motifs, featuring these timeless design elements in a contemporary context.

She has made a name for herself among a new generation of knitwear designers, using the internet to directly interact with an international community of knitters.

www.theshetlandtrader.com



SHUI KUEN KOZINKSI lives in the Boreal Forest of Canada in harmony with nature. The natural surroundings of this woodland environment are her primary influence when designing.

When not knitting and designing lace, she can be found gardening, kayaking or canoeing.

www.ravelry.com/designers/shui-kuen-kozinski



MICHIYO is a Tokyo-based knitwear designer who has published several books in Japan.

She loves exploring shape in her work and often creates garments that can be worn and styled in multiple ways. Her designs for men, women and children are popular among Japanese knitters.

<http://www.ravelry.com/designers/michiyo>



LEILA RAABE is a member of the Brooklyn Tweed team and resides in Portland, Maine where she oversees operations at BT's yarn warehouse.

Leila's design work is known for smart details and knitterly appeal.

Though she is accustomed to operating behind the scenes, she enjoys contributing design work for *Wool People*.

www.ravelry.com/designers/leila-raabe



TANIS LAVALLÉE combined her passion for fiber and color when she started her own hand dyed yarn company, *Tanis Fiber Arts*, in 2008.

Tanis and her husband Chris run their family business from their home studio in Montreal, Canada.

www.tanisfiberarts.com



ANN MCCAULEY

After enjoying a long performance career in modern dance that was a peak life experience, Ann found knitting as her

new creative outlet. Ann grew up in beautiful rural Virginia and now makes her home outside of Boulder, Colorado.

She is the author of *The Pleasures of Knitting: Timeless Feminine Sweaters* and *Together or Separate: Knitting the New Twinset*. Her work has also been featured on the *Knitty Gritty* television episode "Delightful Details".

www.ravelry.com/designers/ann-mccauley



MERCEDES TARASOVICH-CLARK

designs, writes, and obsesses about knitting from her home in Birmingham,

AL, and while traveling the country.

Her designs can be seen in *Interweave Knits*, *Knitscene*, and *Knitty.com*, as well as *Brioche Knitting Basics with Mercedes Tarasovich-Clark*, a Knitting Daily DVD workshop produced by Interweave Press.

www.mercedesknits.com



VEERA VÄLIMÄKI lives and designs in southern Finland. She loves simple yet modern knits that are easy to wear year after year. Veera is a master of

casting on for new sweaters – she adores garter stitch and all kinds of short rows.

The majority of her work is self-published, and has been featured in magazines and books both in Finland, Europe and in the US.

www.100-rain.blogspot.fi
www.rainknitwear.com



PRODUCTION CREDITS

Art Direction & Photography	Jared Flood
Wardrobe Styling	Stephanie Gelot
Models	Hillary Lenfesty Abby Wheeler
Hair & Makeup	Yuko Takahashi
Look Book Design & Illustrations	Jared Flood
Pattern Layout	Julie Hoover
Technical Editing	Christine Craig Robin Melanson Larisa Phipps
Copy Editing/Proofing	Bristol Ivy Leila Raabe
Test Knitting	Sumiko Hong Christine Craig
Project Management	Leila Raabe Bristol Ivy
Fulfillment	Ethan MacDonald
Location	Terhune Orchards Princeton, New Jersey www.terhuneorchards.com



WWW.BROOKLYNTWEED.NET