

WOOL PEOPLE 4

LOOK BOOK



BROOKLYN TWEED

TABLE OF CONTENTS

4	OUTPOST	
8	TILDA CARDIGAN	YOKO HATTA
10	HATHAWAY PULLOVER	CAROL FELLER
12	SCROLLWORK HAT	IRINA DMITRIEVA
14	SCROLLWORK COWL	
16	CHICANE CARDIGAN (HIS)	COOKIE A.
20	CHICANE CARDIGAN (HERS)	
22	THORN SHAWL	BRISTOL IVY
24	DRESDEN VEST	KIRSTEN JOHNSTONE
26	DRESDEN CARDIGAN	
28	RUNA HOODIE	GUDRUN JOHNSTON
30	KINDLING SHAWL	LEILA RAABE
34	VERTEX VEST	JULIE WEISENBERGER
36	KENZO CARDIGAN	OLGA BURAYA-KEFELIAN
40	INGLENOOK HOUSE SOCKS	ADRIAN BIZILIA
42	STRANGER CARDIGAN	MICHIYO
46	BENEDETTA CARDIGAN	CARRIE BOSTICK HOGE
48	MACALLAN VEST	THEA COLMAN
50	LUMEN SHAWL	SIVIA HARDING
55	PATTERN BLUEPRINTS	
86	CONTRIBUTING DESIGNERS	
94	YARN INFORMATION	
98	CREDITS	





OUTPOST

GREETINGS FROM BROOKLYN TWEED!

WINTER IS IN FULL SWING AND THE HOLIDAYS ARE UPON US. IT'S FINALLY TIME TO HUNKER DOWN AND ENJOY THE SEASONAL COZINESS WE KNITTERS CRAVE! HERE AT BT HEADQUARTERS, WE'VE BEEN BUSILY POLISHING UP OUR NEWEST DESIGN COLLECTION TO BID FAREWELL TO 2012 AND WELCOME THE NEW YEAR.

OUR FOURTH COLLECTION IN THE **WOOL PEOPLE** SERIES FEATURES 15 FRESH NEW KNITTING PATTERNS FROM DESIGNERS IN SEVERAL CORNERS OF THE GLOBE, FROM IRELAND TO JAPAN TO AUSTRALIA. MY WORK WITH THE CONTRIBUTORS IS A GREAT SOURCE OF PERSONAL INSPIRATION AND REMAINS ONE OF MY VERY FAVORITE PARTS OF MY JOB.

WE SHOT THE COLLECTION ON A CLOUDY WINTER DAY AT THE OLD AMERICAN CANNING FACTORY IN BROOKLYN: A 130,000 SQ. FOOT INDUSTRIAL COMPLEX ON THE GOWANUS CANAL. THE MAZE-LIKE CLUSTER OF BUILDINGS – CONSTRUCTED FROM 1865 TO 1901 – HAS, IN RECENT YEARS, BEEN SALVAGED TO CREATE WORKING STUDIO SPACES FOR ARTISTS AND CRAFTSPEOPLE OF ALL KINDS. THE FACTORY SIMPLY OOZES WITH INDUSTRIAL HISTORY, FROM THE MONOLITHIC STEEL DOORS THAT CAP EVERY CORRIDOR TO THE CAVERNOUS FREIGHT ELEVATOR SHAFTS THAT ECHO LIKE UNLIT CAVES. A VERY INSPIRATIONAL PLACE INDEED – ONE THAT NATURALLY GETS ME THINKING ABOUT THE PEOPLE WHO WORKED THERE OVER A CENTURY AGO, AND WHAT THEIR LIVES MUST HAVE BEEN LIKE.

AS THE YEAR COMES TO A CLOSE, I FIND MYSELF REFLECTING ON THE THINGS THAT 2012 BROUGHT TO US – BOTH THE REWARDS AND THE CHALLENGES. I ALSO INEVITABLY FEEL THE SPARK OF ANTICIPATION FOR THE YEAR AHEAD, FOR THE THINGS THAT COME NEXT AND HOW THEY WILL SHAPE OUR JOURNEY. AS YOU VENTURE FORTH INTO 2013, WE HOPE TO CONTINUE TO PROVIDE RESOURCES AND INSPIRATION FOR YOUR KNITTING GROWTH.

ALL MY VERY BEST,

JARED

JARED FLOOD



WOOL PEOPLE 4

THE COLLECTION



TILDA CARDIGAN
by Yoko Hatta





HATHAWAY PULLOVER
by Carol Feller



SCROLLWORK HAT
by Irina Dmitrieva





SCROLLWORK COWL
by Irina Dmitrieva





CHICANE CARDIGAN (HIS)

by Cookie A.





CHICANE CARDIGAN (HERS)

by Cookie A.





THORN SHAWL
by Bristol Ivy



DRESDEN VEST
by Kirsten Johnstone





DRESDEN CARDIGAN
by Kirsten Johnstone

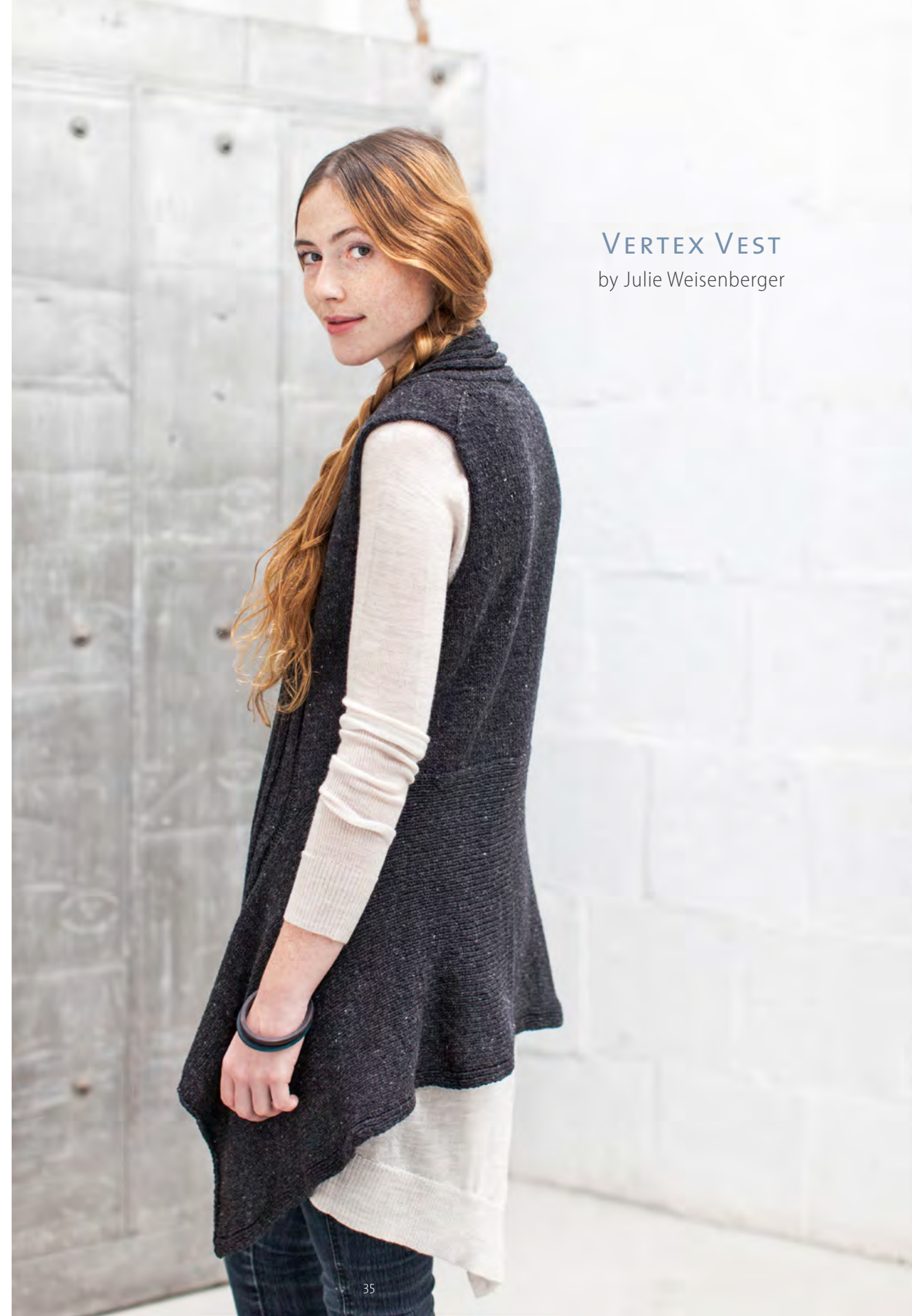




KINDLING SHAWL

by Leila Raabe





VERTEX VEST
by Julie Weisenberger



KENZO CARDIGAN
by Olga Buraya-Kefelian





INGLENOOK HOUSE SOCKS

by Adrian Bizilia



STRANGER CARDIGAN

by Michiyo





BENEDETTA CARDIGAN

by Carrie Bostick-Hoge



MACALLAN VEST
by Thea Colman



LUMEN SHAWL

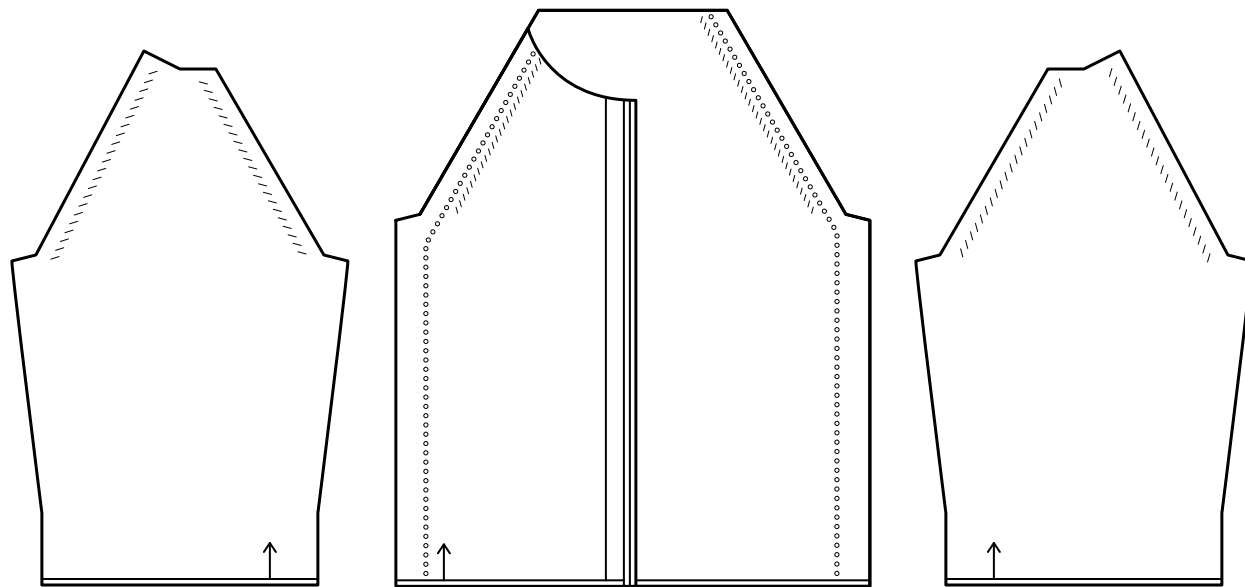
by Sivia Harding







PATTERN BLUEPRINTS



TILDA
by Yoko Hatta



FINISHED DIMENSIONS

35½ (39½, 43½, 47½, 51½, 55½)" finished dimension at bust, buttoned
Intended Ease: +3-6" at bust
Sample shown is 39½" with +7½" of ease on model

MATERIALS

8 (8, 9, 10, 11, 12) skeins of Brooklyn Tweed *Shelter* in Sweater Color and 1 skein in Trim Color (optional)
Photographed in *Fossil* (MC) and *Sweatshirt* (CC)

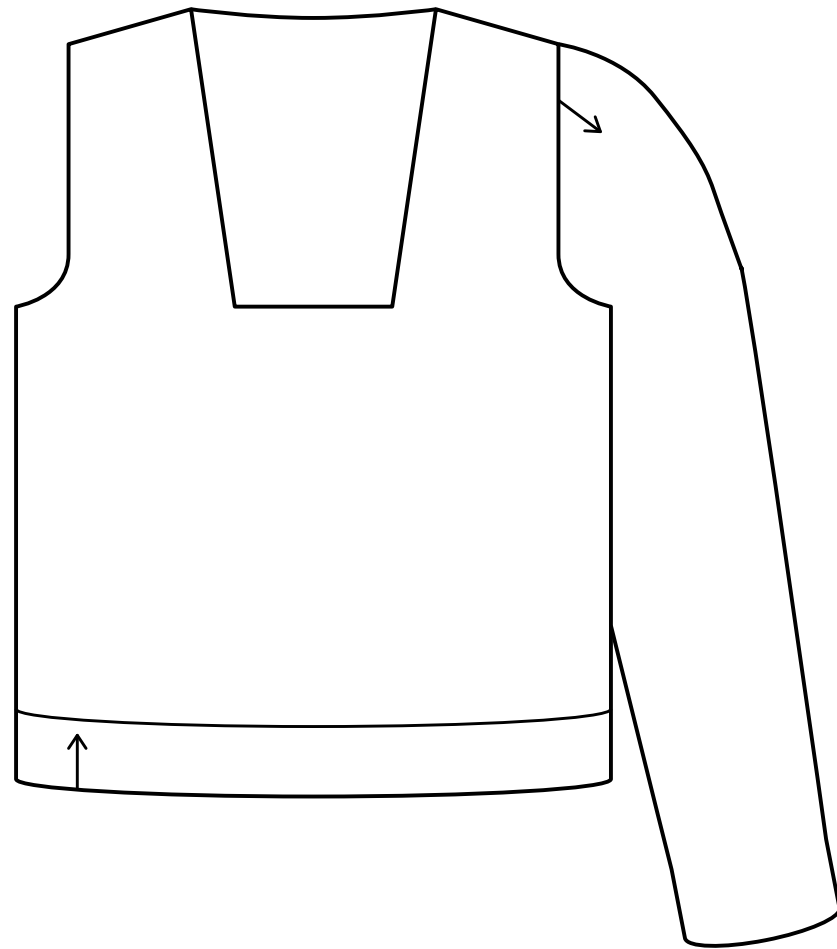
GAUGE

20 stitches & 29 rows = 4" in stockinette stitch, before and after blocking

DESIGN DETAILS

5-piece seamed construction, worked from the bottom up, eyelet columns begin at lower hem and travel along side seams and resume through raglan shaping of yoke, optional contrasting rolled trim on body and sleeves, wide scoop neck, three-quarter sleeves, simple rope cables flanking cardigan opening, stockinette button bands

[CLICK PHOTO TO PURCHASE PATTERN PDF ONLINE](#)



HATHAWAY

by Carol Feller



FINISHED DIMENSIONS

30½ (33¼, 35¾, 38½, 41, 43½, 48¾, 51¼, 53¾)" finished (blocked) garment at bust

Intended Ease: +1-2" at bust

Sample shown is size 35¾" with +3¾" of ease on model (ribbed fabric creates a more fitted silhouette)

MATERIALS

8 (9, 10, 11, 12, 12, 13, 14, 15) skeins of Brooklyn Tweed *Shelter*

Photographed in color *Almanac*

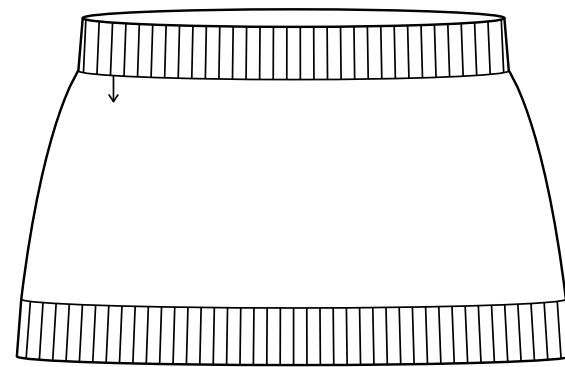
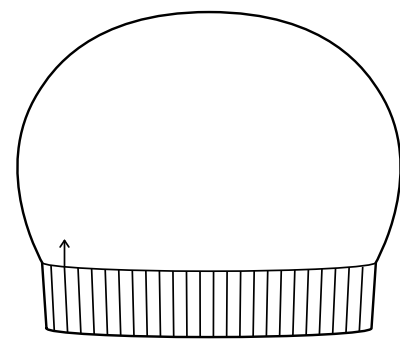
GAUGE

25 stitches & 31 rounds = 4" in Chart C or D with Gauge Needle; before and after blocking with ribbing lightly stretched

DESIGN DETAILS

Three-piece semi-seamless construction, body worked circularly to underarm, top-down set in sleeve (shaped with short rows), allover rib and cable pattern, large central cable at center front and back, ribbed shawl collar, long sleeves

[CLICK PHOTO TO PURCHASE PATTERN PDF ONLINE](#)



SCROLLWORK

by Irina Dmitrieva



FINISHED DIMENSIONS

Cowl: 31" circumference at base, 24" circumference at top, 9½" height
Hat: 18" brim circumference, 22" circumference at widest point, 9" height from base of ribbing to top-center of crown
To fit average adult head sizes 21-24"

MATERIALS

Each project requires 2 skeins of Brooklyn Tweed *Shelter*
(both hat and cowl can be made with 3 skeins)
Hat photographed in color *Wool Socks*
Cowl photographed in color *Soot*

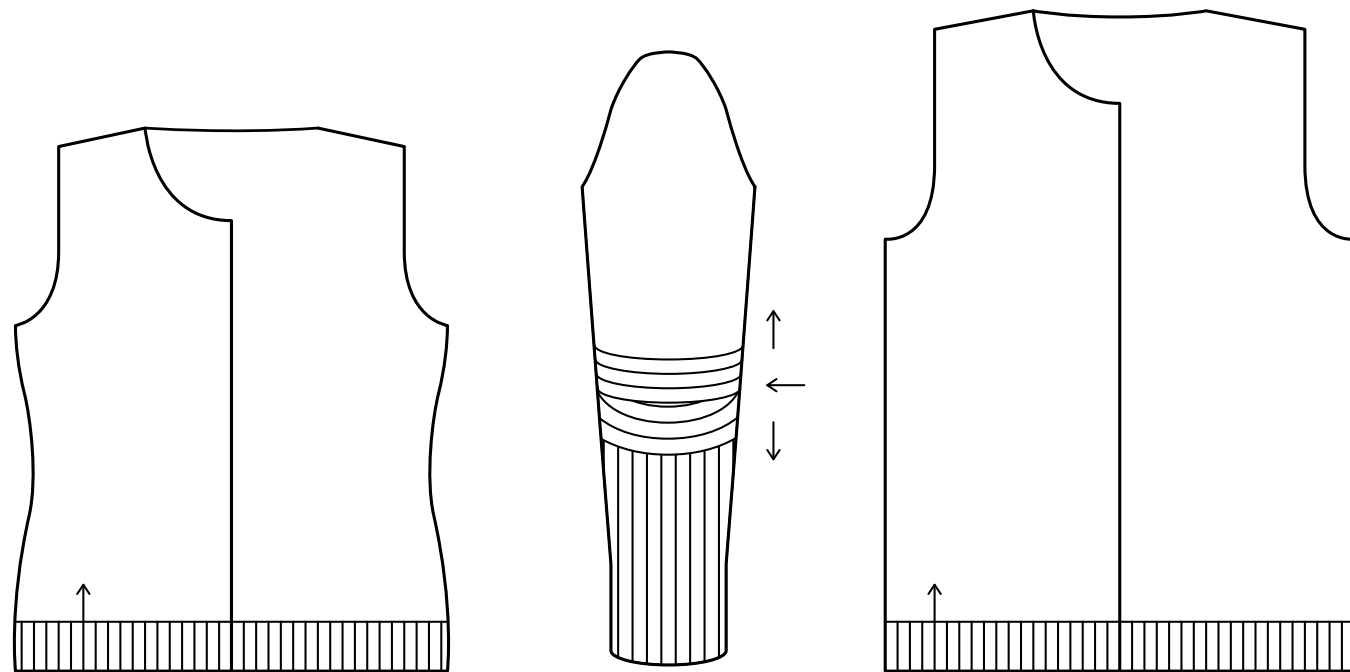
GAUGE

22 stitches and 26 rounds = 4" over cable pattern, relaxed after wet-blocking

DESIGN DETAILS

Both projects are worked circularly, cowl worked from the top down, hat worked from the bottom up, ribbed hem flows directly into cable pattern, hat's crown shaping is integrated into cable pattern creating an 8-point star motif, slightly slouchy fit

[CLICK PHOTO TO PURCHASE PATTERN PDF ONLINE](#)



CHICANE
by Cookie A.



FINISHED DIMENSIONS

34 (35¼, 38, 41) (43¾, 47, 49½) (52¾, 56, 58¾)" finished (blocked) garment at bust/chest
Intended ease: 1" to 4"

Women's sample shown is size 35¼" with +3¼" of ease on model
Men's sample shown is size 43¾" with +2¾" of ease on model

MATERIALS

Women's: 7 (7, 8, 8) (9, 10, 10) (11, 12, 12)
Men's: 9 (9, 10, 10) (11, 12, 12) (13, 14, 14) skeins of Brooklyn Tweed *Shelter*
Photographed in color *Old World* (Hers) & *Barn Owl* (His)

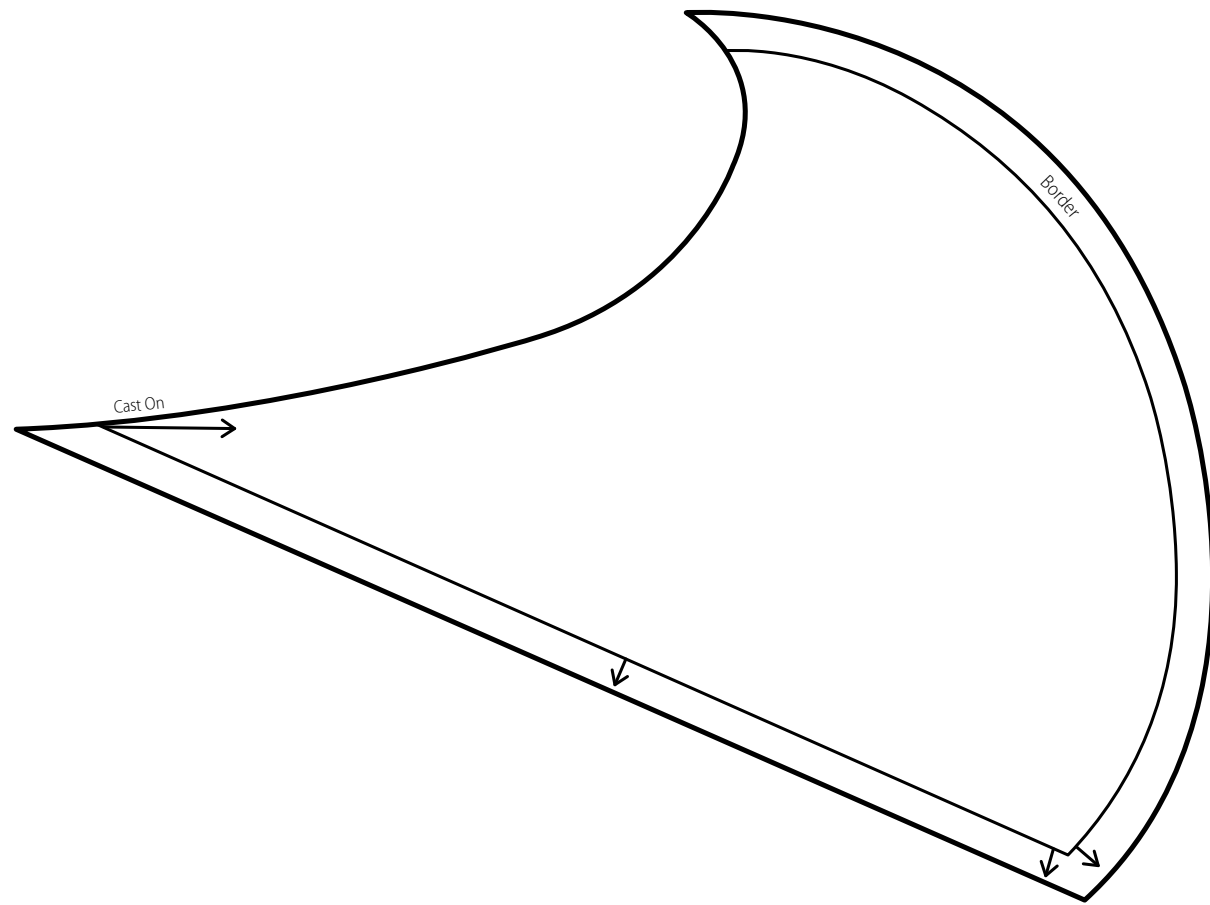
GAUGE

18 stitches & 28 rows = 4" in stockinette stitch with Gauge Needle; after blocking

DESIGN DETAILS

5-piece seamed construction, sleeve worked with shaped elbow first, remaining sections are picked up directly and worked out from elbow, zipper fronts, extra long sleeve, fitted waist (women's), low scoop neck, deep ribbed collar

[CLICK PHOTO TO PURCHASE PATTERN PDF ONLINE](#)



THORN
by Bristol Ivy



FINISHED DIMENSIONS

56" along straight border edge (leg of triangle), 50" from mitered point of border to tip of curved border edge (height of triangle), 60" along curved border edge; measurements taken from relaxed fabric after lace-blocking

MATERIALS

4 skeins of Brooklyn Tweed *Loft*
Photographed in color *Fauna*

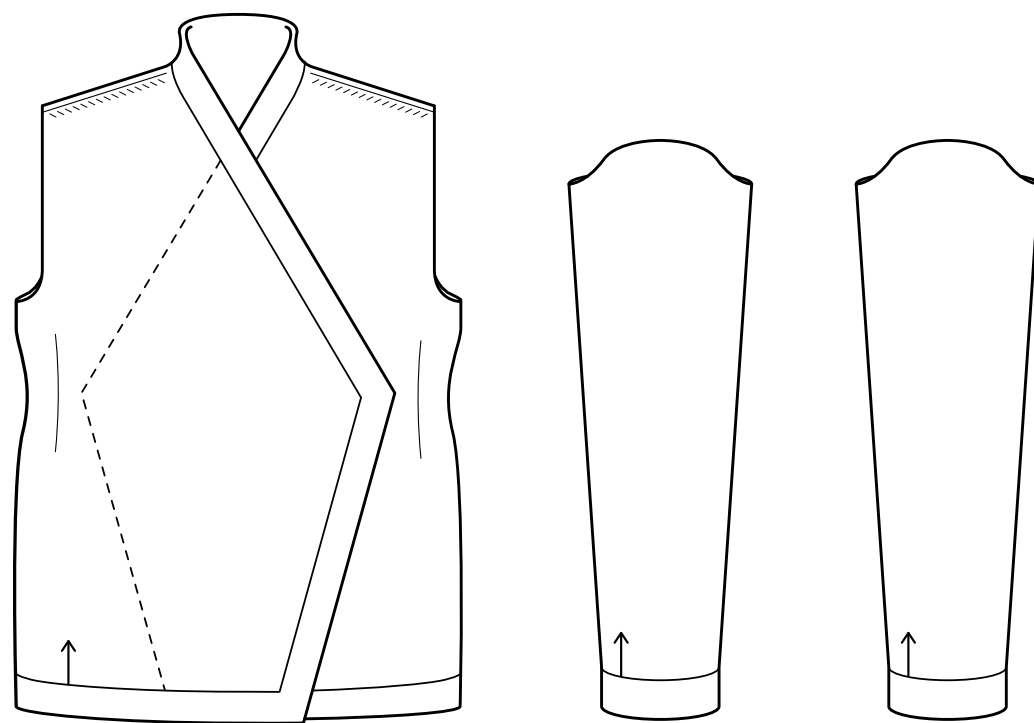
GAUGE

12 stitches and 15 rows = 2" in stockinette stitch
12 stitches and 16 rows = 2" in garter stitch
14 stitches and 18 rows = 2" in 1x1 half-twisted garter rib
all measurements taken after lace-blocking

DESIGN DETAILS

Non-traditional shaping/construction, curved triangular shawl, garter rib "sunray" pattern integrated into shaping, garter stitch border picked up and worked in-line with live stitches to finish, mitered corner border detail, lace-blocked

[CLICK PHOTO TO PURCHASE PATTERN PDF ONLINE](#)



DRESDEN

by Kirsten Johnstone



FINISHED DIMENSIONS

32 (34, 36½, 38½) (40, 42, 44½) (46½, 48, 50, 52½)" finished garment at bust
with fronts overlapping

Suggested Ease: +0-1" for vest; 0-2" for cardigan

Samples shown are size 34" with +2" ease on model

MATERIALS

Vest: 4 (4, 4, 5) (5, 5, 5) (6, 6, 7, 7) [Cardigan: 6 (6, 6, 6) (7, 7, 8) (8, 9, 9, 9)] skeins
of Brooklyn Tweed *Loft*

Photographed in *Faded Quilt* (Vest) & *Snowbound* (Cardigan)

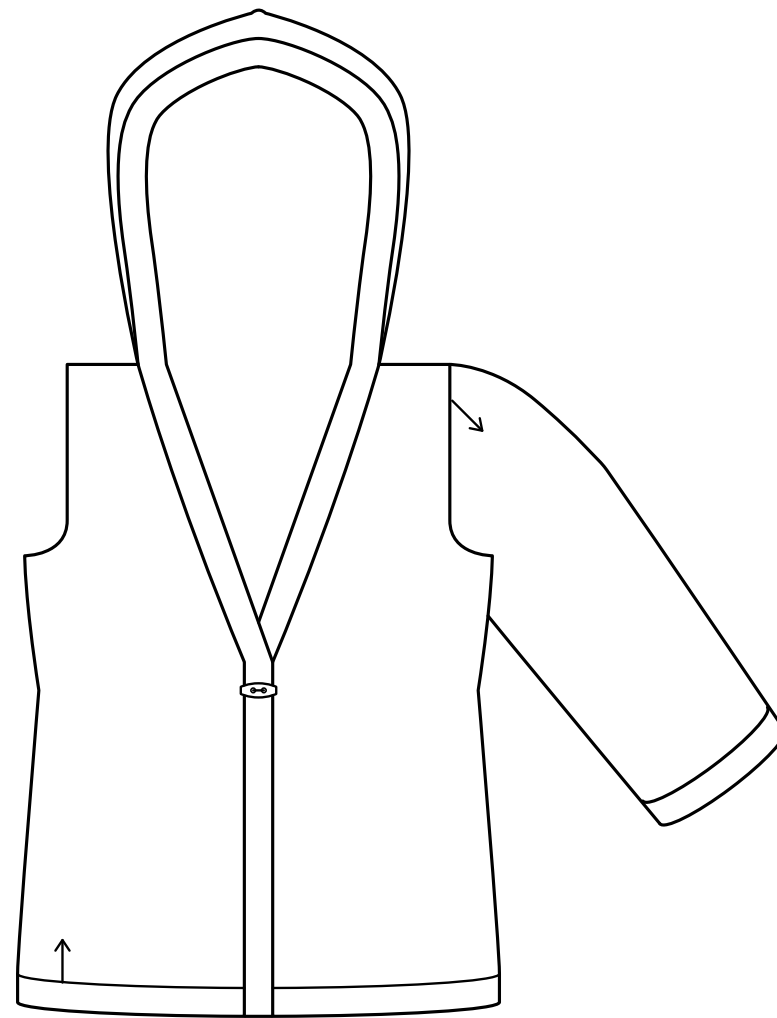
GAUGE

22 stitches & 35 rows = 4" in stockinette stitch, before and after blocking

DESIGN DETAILS

Single-piece seamless construction (vest), three-piece construction (cardigan), worked from the bottom up, sleeves (optional) worked circularly, shaped overlapping fronts, wide seed stitch border, in-line shoulder shaping, waist darts

[CLICK PHOTO TO PURCHASE PATTERN PDF ONLINE](#)



RUNA

by Gudrun Johnston



FINISHED DIMENSIONS

30¼ (33¼, 36¼, 39, 42, 44¾, 47¾, 50½)" finished (blocked) garment at bust

Intended ease: -1 to 1½" at bust

Sample shown is size 33¼" with +1¼" ease on model

MATERIALS

8 (8, 9, 10, 11, 11, 12, 13) skeins of Brooklyn Tweed *Shelter*

Photographed in color *Long Johns*

GAUGE

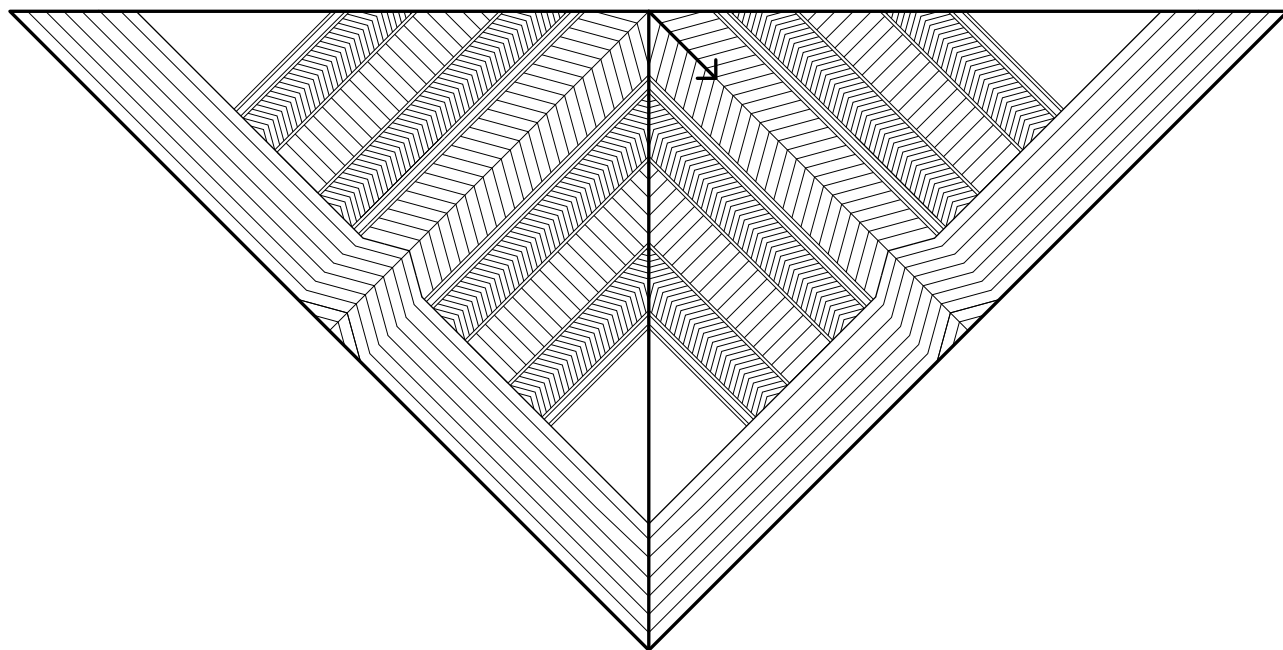
25 stitches & 27 rows= 4" in flying wings pattern, after blocking

20 stitches & 36 rows= 4" in seed stitch, after blocking

DESIGN DETAILS

Three-piece semi-seamless construction, body worked from the bottom up in one piece to the under-arm, seed stitch fabric with textured yoke, textured hood, ribbed trim and empire waist, three-quarter sleeves are picked up and worked from the top-down, short-row shaping on sleeve cap

[CLICK PHOTO TO PURCHASE PATTERN PDF ONLINE](#)



KINDLING

by Leila Raabe



FINISHED DIMENSIONS

62" wingspan, 30" height at center spine; measurements taken from relaxed fabric after lace-blocking

MATERIALS

6 skeins of Brooklyn Tweed *Loft* or *Shelter*

Photographed in color *Foothills* with *Loft* yarn held double for enhanced stitch definition

GAUGE

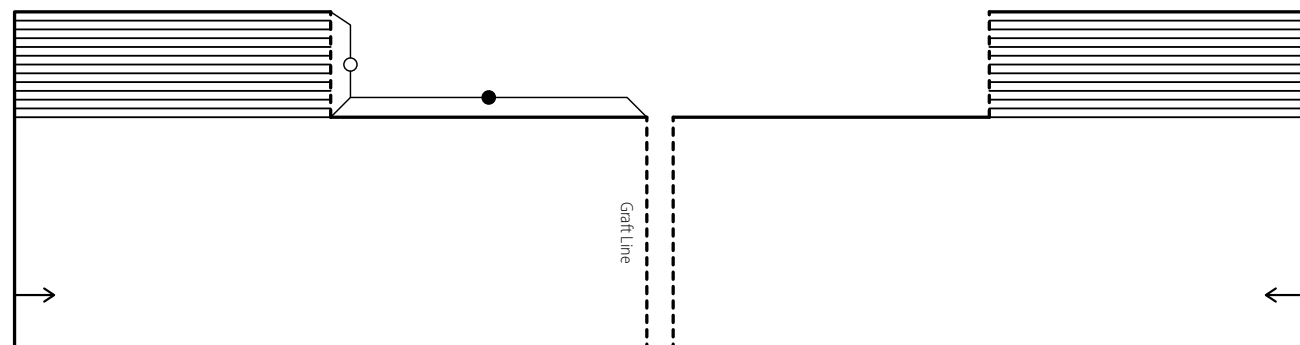
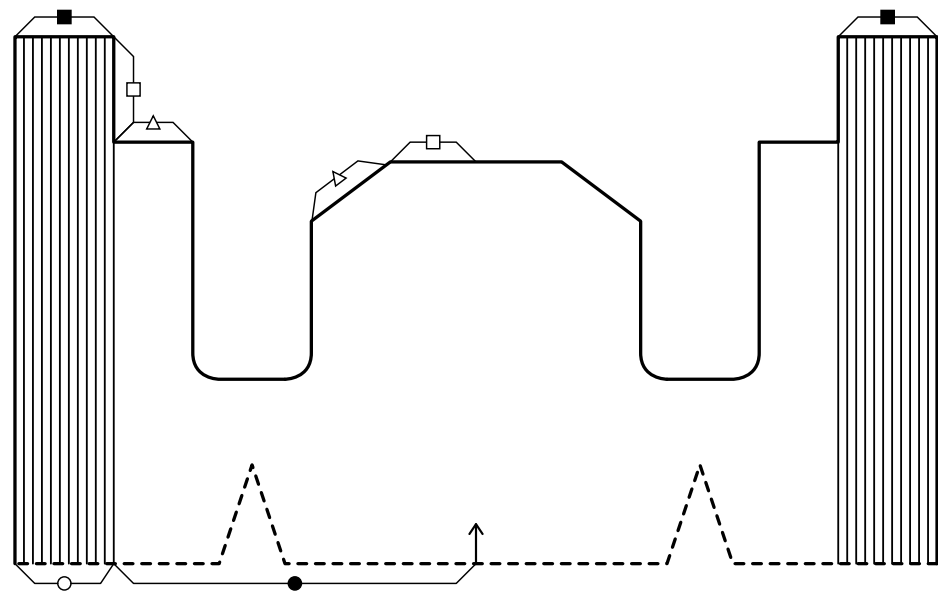
Working Gauge: 19 stitches & 26 rows = 4" in stockinette stitch, before blocking

Finished Gauge: 18 stitches & 24 rows = 4" in stockinette stitch, relaxed after lace-blocking

DESIGN DETAILS

Single-piece, top-down construction, welted hem, gansey patterning on shawl body, central chevron integrates into border, *Loft* is held double to enhance stitch definition, lace-blocked

[CLICK PHOTO TO PURCHASE PATTERN PDF ONLINE](#)



VERTEX
by Julie Weisenberger



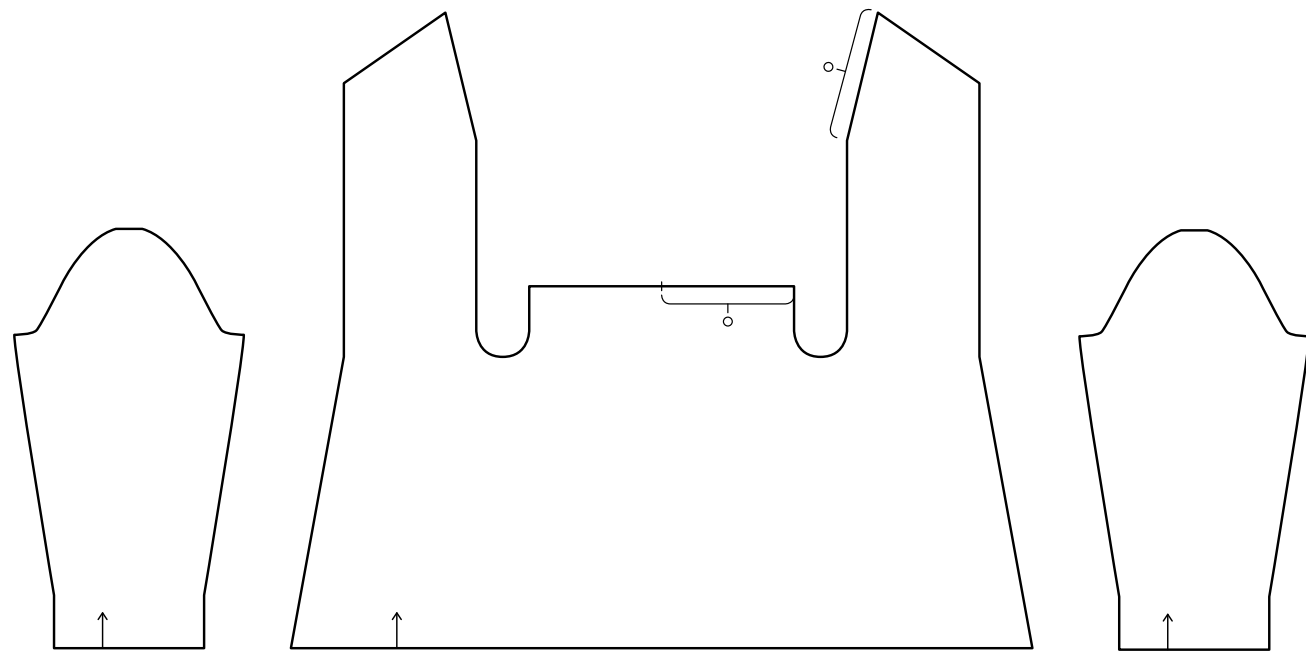
FINISHED DIMENSIONS
35¼ (38, 42¼, 46, 51, 54¾)" finished (blocked) garment at bust
Intended Ease: +1-3" at bust
Sample shown is size 35" with +3" of ease on model

MATERIALS
5 (5, 6, 6, 7, 8) skeins of Brooklyn Tweed *Loft*
Photographed in color *Cast Iron*

GAUGE
20 stitches & 28 rows = 4" in stockinette stitch, before and after blocking
note that this is a loosely knit garment

DESIGN DETAILS
Three-piece semi-seamless construction, perpendicular lower back panels create draping fabric, back pieces worked first and grafted together, live stitches are picked up for body and resume together with wide ribbed collar, waist shaping, fully fashioned shoulder

[CLICK PHOTO TO PURCHASE PATTERN PDF ONLINE](#)



KENZO

by Olga Buraya-Kefelian



FINISHED DIMENSIONS

33¼ (36¼, 39¼, 42¼, 45¼, 48¼, 51¼, 54¼)" garment circumference at bust

Intended Ease: 2-4"

Sample shown is size 36¼" with 4¼" ease on model

MATERIALS

8 (9, 10, 11, 12, 13, 14) skeins of Brooklyn Tweed *Shelter*

Photographed in color *Hayloft*

GAUGE

26½ stitches & 28½ rows = 4" in Cabled pattern on Size A, after blocking

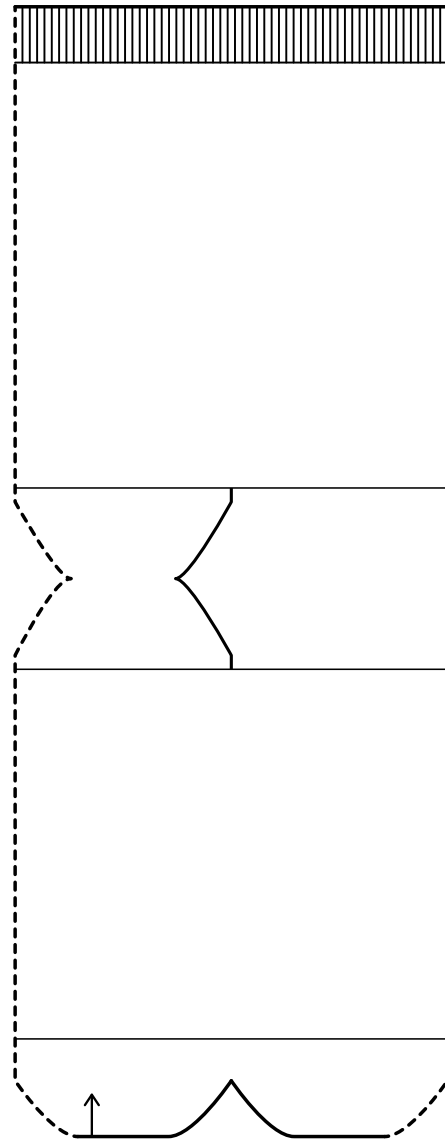
24½ stitches & 28½ rows = 4" in Cabled pattern on Size B, after blocking

22¾ stitches & 27 rows = 4" in Cabled pattern on Size C, after blocking

DESIGN DETAILS

Three-piece construction, worked from the bottom up, seamed, sculptural allover cable pattern, cardigan fronts extend to wrap shoulders and meet at center back, back detail is finished using kitchener stitch for an invisible join, v-neckline, clasp closures, waist shaped through use of different needle sizes

[CLICK PHOTO TO PURCHASE PATTERN PDF ONLINE](#)



INGLENOOK
by Adrian Bizilia



FINISHED DIMENSIONS

8½ (9½, 10¾)" finished (blocked) length, heel to toe
 7¾" circumference for all sizes; note that socks are particularly elastic and will fit
 the full range of sizes with this circumference
 Intended Ease: Sole can measure up to 1" shorter in length (from heel to toe) than wearer's foot length
 Sample shown is size 9½"

MATERIALS

3 skeins of Brooklyn Tweed *Shelter*
 Photographed in color *Woodsmoke*

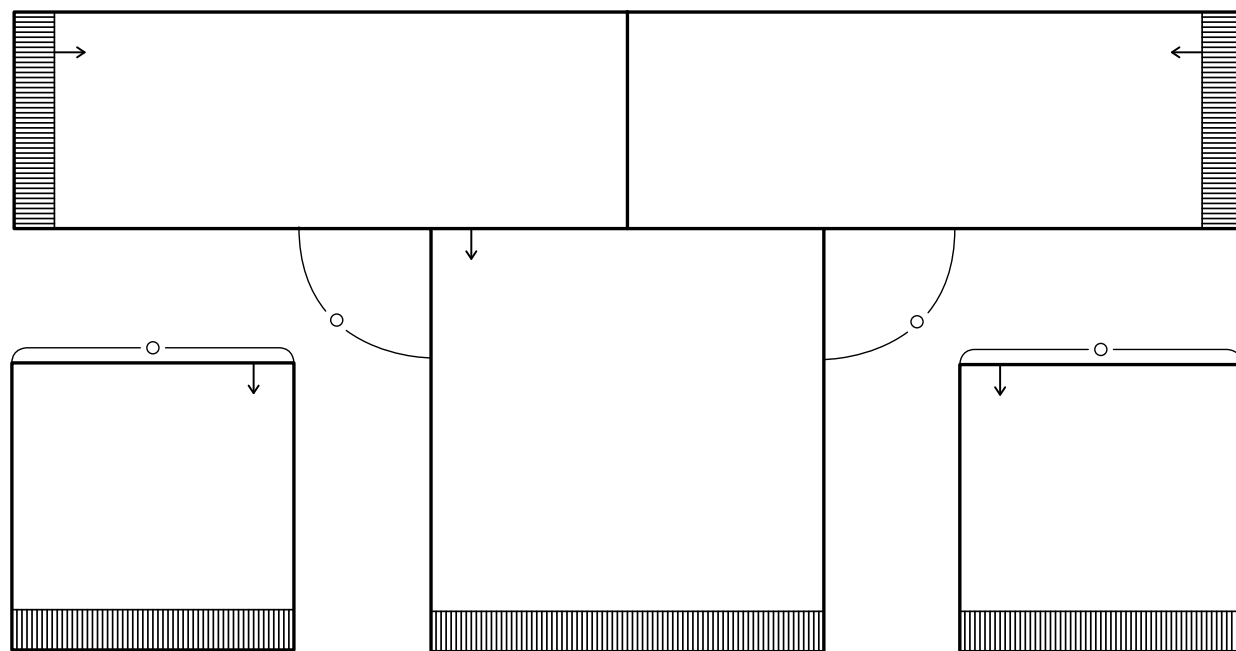
GAUGE

11 stitches and 18 rounds = 2" in stockinette stitch with Needle A, after wet-blocking

DESIGN DETAILS

Toe-up construction, short-row heel, twisted rib cuff, stockinette toe & sole, cable panel travels up
 instep from toe to cuff, cabled leg from heel to cuff, worked in the round (schematic is shown in
 exploded view)

[CLICK PHOTO TO PURCHASE PATTERN PDF ONLINE](#)



STRANGER

by Michiyo



FINISHED DIMENSIONS

41 (44³/₄, 49, 52³/₄, 58¹/₄)" finished circumference at bust
 To fit approximate bust size 32 (36, 40, 44, 48)"
 Intended Ease: approximately 8-10" at bust
 Sample shown is 41" with +9" of ease on model

MATERIALS

9 (10, 11, 12, 13) skeins of Brooklyn Tweed *Shelter*
 Photographed in color *Sweatshirt*

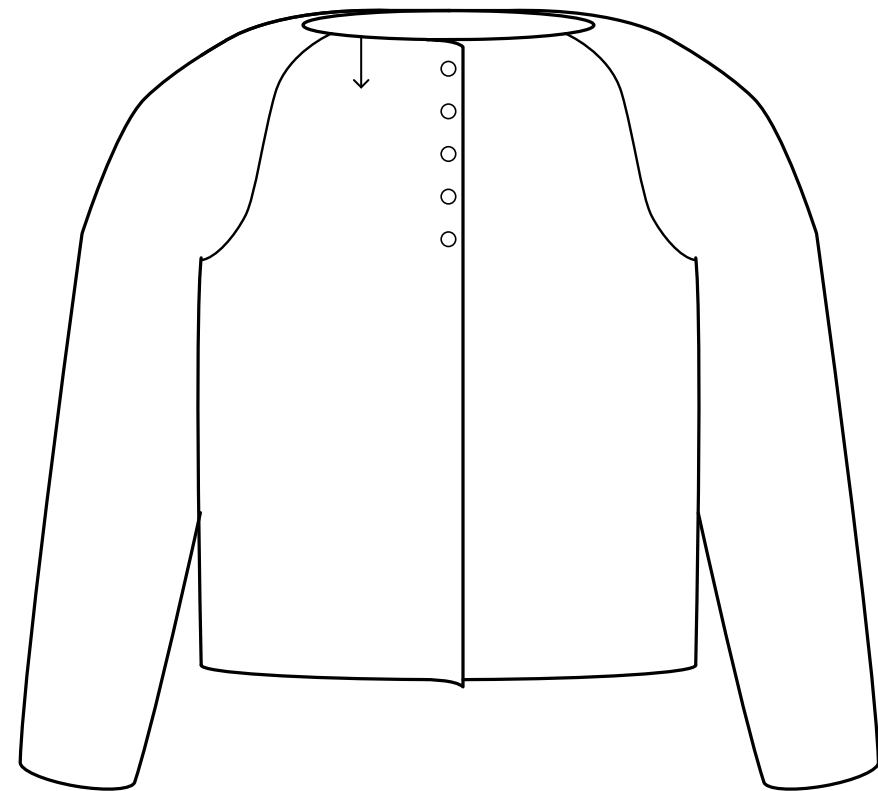
GAUGE

17¹/₂ stitches & 25¹/₂ rows = 4" in stockinette stitch, relaxed after blocking

DESIGN DETAILS

5-piece construction, modular design, shown above as a drop-shoulder wrap cardigan with stole yoke, can be worn upside down as a cropped bolero with dramatic collar (see both ways on pages 42-45), horseshoe cable panel, 1x1 ribbed hem and cuffs, stockinette back and sleeves, cabled fronts grafted at center back, back picked up and worked directly from grafted fronts

[CLICK PHOTO TO PURCHASE PATTERN PDF ONLINE](#)



BENEDETTA
by Carrie Bostick Hoge



FINISHED DIMENSIONS

33¼ (35¼, 38¾, 42, 45¼, 48¾, 52, 55¼)"

Intended Ease: +1–3"

Sample shown is size 35¼" with +3¼" of ease on model

MATERIALS

5 (5, 6, 6, 7, 7, 8, 8) skeins of Brooklyn Tweed *Loft*

Photographed in color Soot

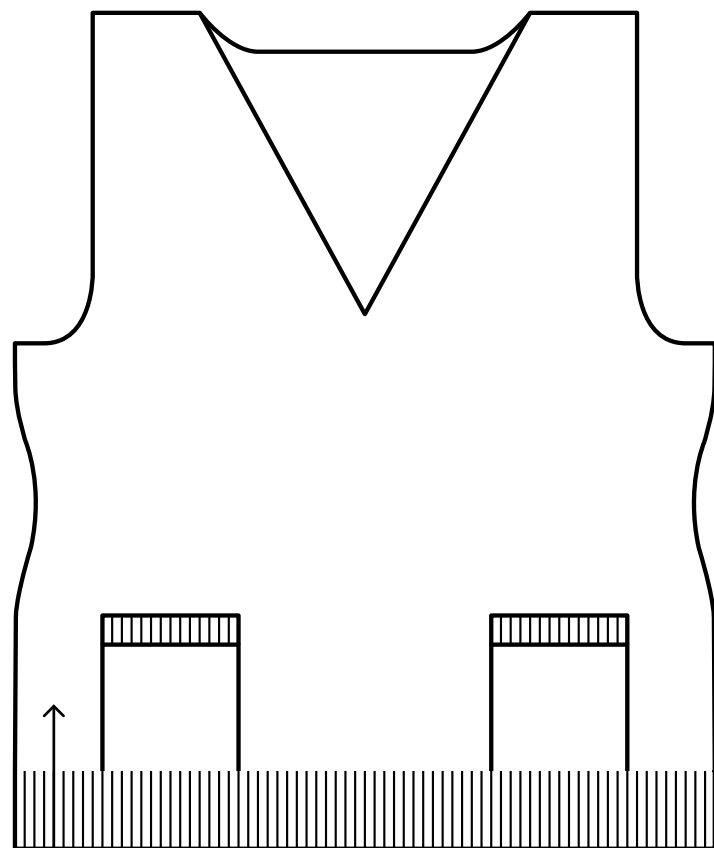
GAUGE

24 stitches & 44 rows/rounds = 4" in garter stitch; taken from relaxed fabric after wet-blocking

DESIGN DETAILS

Top-down construction, raglan yoke, seamless, garter stitch fabric, lace insertions along cardigan fronts, lace detailing on sleeve cuff, gently scalloped front hem

[CLICK PHOTO TO PURCHASE PATTERN PDF ONLINE](#)



MACALLAN
by Thea Colman



FINISHED DIMENSIONS

32³/₄ (36³/₄, 38³/₄, 42, 45³/₄, 47¹/₄, 52³/₄)" finished (blocked) garment at bust
Intended Ease: +2–4"
Sample shown is size 36³/₄" with +4³/₄" of ease on model

MATERIALS

5 (5, 6, 7, 7, 8, 9) skeins of Brooklyn Tweed *Loft* (held double)
Photographed in color *Pumpnickel*

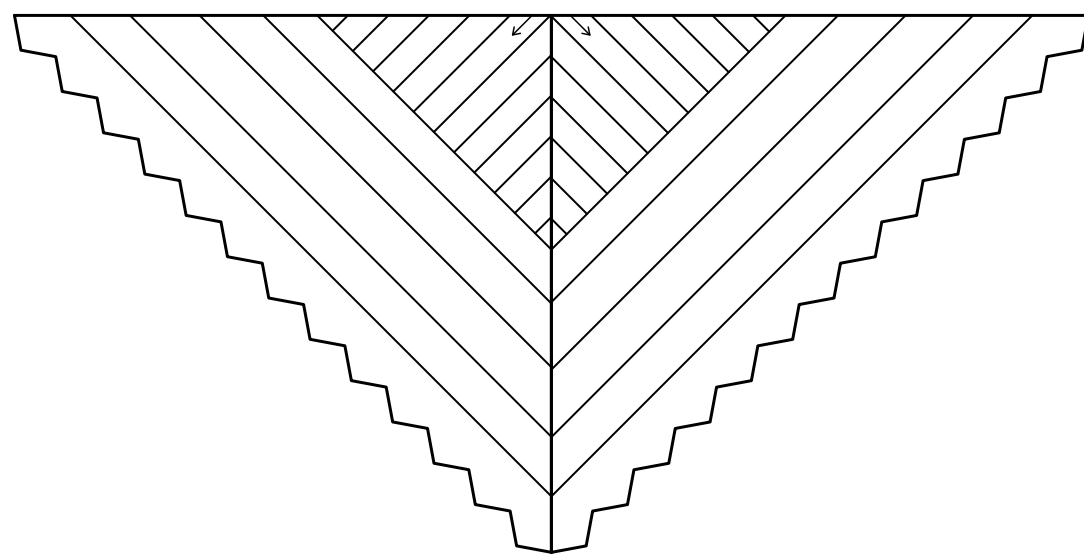
GAUGE

18 stitches & 30 rows = 4" in stockinette stitch with yarn held double, taken from relaxed fabric after wet-blocking

DESIGN DETAILS

Two-piece construction, worked from the bottom up, stockinette stitch front pieces with cabled faux-pockets, shaped at the high waist, cabled back panel integrates with hem ribbing, v-neckline, ribbed trims, *Loft* yarn held double for enhanced stitch definition

[CLICK PHOTO TO PURCHASE PATTERN PDF ONLINE](#)



LUMEN

by Sivia Harding



FINISHED DIMENSIONS

60" wingspan, 29" height at center spine
Measurements taken from relaxed fabric after lace-blocking

MATERIALS

2 skeins of Brooklyn Tweed *Loft*
Beaded version photographed in color *Embers*
Non-beaded version photographed in color *Cast Iron*

GAUGE

Working Gauge: 21 stitches & 48 rows (24 garter ridges) = 4" over garter stitch fabric,
taken from bound-off swatch before blocking
Finished Gauge: 18 stitches & 32 rows (16 garter ridges) = 4" over garter stitch fabric,
taken from relaxed fabric after lace-blocking

DESIGN DETAILS

Top-down construction, double-eyelet spine shaping, optional beading instructions included in
pattern, lace and welt border pattern, scalloped fan edge, lace-blocked

[CLICK PHOTO TO PURCHASE PATTERN PDF ONLINE](#)



CONTRIBUTING DESIGNERS

For each *Wool People* collection, we commission independent knitwear designers from around the world to submit designs that are currently inspiring them



COOKIE A.

Cookie A. is the author of *Sock Innovation* (2009 Interweave Press), *Knit. Sock. Love.* (2010 One Leg Press), and *Cookie A Knitwear Volume 1: Shapes and Forms* (2012 One Leg Press). Her work has been featured in many print and online publications including *Vogue Knitting*, *Knit 1*, *Knitty*, *The Knitter*, *Sockupied*, and *Knitting Daily*.

Cookie teaches knitting workshops internationally and has demonstrated knitting tips and techniques on *Knitting Daily TV*, *Knitty Gritty*, and *Sockupied*.

www.CookieA.com

ADRIAN BIZILIA

Adrian Bizilia lives with her husband Mark and faithful dog Pippa in the Berkshire foothills of Western Massachusetts. When she's not dyeing wool for *Hello Yarn*, she knits, designs knitwear, and teaches spinning and dyeing at Yarn School. Knitting and spinning fill her with happy woolen feelings!

www.helloyarn.com

CARRIE BOSTICK HOGE

Carrie Bostick Hoge lives in Maine with her husband and baby girl. She works as Art Director for *Quince & Company* during the week and plays in her backyard studio for *Madder* on the weekends.

www.swatchdiaries.blogspot.com

OLGA BURAYA-KEFELIAN

Having learned to knit at her mother's knee, Olga's love of design began at a very young age. Seeking inspiration from industrial and architectural sources, she strives to translate those experiences through her work with knitwear.

Author of *Ori Ami Knits: Fiber Geometry*, Olga resides in Japan where she designs her own line of garments and accessories.

www.olgajazzy.blogspot.com

THEA COLMAN

After leaving a corporate career in advertising to raise her daughters, Thea began experimenting with knitwear design and has never looked back.

She now designs her own line of garments for her brand *Baby Cocktails* in the greater Boston area, where she lives with her husband and two girls.

www.babycocktails.blogspot.com

IRINA DMITRIEVA

Irina Dmitrieva is a Ukrainian knitwear designer who specializes in cable knits. Her thoughtful accessory patterns are known for their special attention to detail and seamless integration of unique cable patterns.

www.myknitland.blogspot.com



CAROL FELLER

Carol Feller is an independent knitwear designer and knitting teacher. Her patterns for men, women, and children are widely published in books and magazines, including *Knitting in the Sun* (Wiley, 2009), *Twist Collective*, *Interweave Knits*, and *Knitty*.

You can find her self-published patterns and e-books on her website www.stolenstitches.com.

She lives in Cork, Ireland, with her husband, four sons, and a large dog. Her first book, *Contemporary Irish Knits*, was published by Wiley in August 2011.

www.stolenstitches.com



SIVIA HARDING

Sivia Harding learned how to knit in 2000 and has been churning out patterns since 2003. Her work has appeared in publication under her own name and in various magazines, books and clubs.

Sivia is known for her work with exceptional beaded knits.

www.siviaharding.com



YOKO HATTA

Yoko Hatta is a renowned Japanese knitwear designer, known there for her label *Kazekobo*.

Yoko began her career designing boutique knitwear in Tokyo over 30 years ago. Soon after she began designing knitwear for handknitters and has been doing so ever since. She is currently at work on two books that will soon be released in Japan. She lives and works in Tokyo.

www.kazekobo.net



BRISTOL IVY

Bristol is a knitting designer and fiber artist from Portland, Maine. Her work focuses on the intersection between classic tailoring and innovative technique, creating a unique and wearable aesthetic while maintaining knitterly appeal.

www.blackbirdturning.blogspot.com



KIRSTEN JOHNSTONE

Kirsten is a Melbourne, Australia-based Architect who uses the mediums of built form and interior space to create refined designs. She also uses yarn, fabric and photography to explore her modern aesthetic on a smaller scale.

She has an eye for flattering forms that are deceptively simple yet frequently transformable.

www.kirstenjohnstone.com



GUDRUN JOHNSTON

Gudrun Johnston is a Scottish knitwear designer born in the Shetland Islands. Her work often incorporates traditional Shetland techniques and motifs, featuring these timeless design elements in a contemporary context.

She has made a name for herself among a new generation of knitwear designers, using the Internet to directly interact with an international community of knitters.

www.theshetlandtrader.com



MICHIYO

Michiyo is a Tokyo-based knitwear designer who has published several books in Japan.

She loves exploring shape in her work and often creates garments that can be worn and styled in multiple ways. Her designs for men, women and children are popular among Japanese knitters.

www.ravelry.com/people/mabo0000



LEILA RAABE

Leila is a member of the Brooklyn Tweed Team, and resides in Portland, Maine where she oversees operations at BT's yarn warehouse.

Leila's design work is known for smart details and knitterly appeal. Though she is accustomed to operating behind the scenes, she enjoys contributing design work for *Wool People*.



JULIE WEISENBERGER

Julie once designed for her own ready-to-wear sweater company but has focused on designing for hand knitters for the past 20+ years.

She is constantly attempting to blur the lines between fashion and knitting at Coco Knits.

www.cocoknits.com



YARN INFORMATION

BROOKLYN TWEED YARNS

Grown in Johnson County, Wyoming; spun with care in historic Harrisville, New Hampshire.



SHELTER
Worsted Weight



LOFT
Fingering Weight

SHELTER

50 gram skein/140 yards
worsted weight (4-5 stitches per inch)
woolen 2-ply construction
\$12.50

[click thumbnail to purchase](#)
available in 32 colors

LOFT

50 gram skein/275 yards
fingering weight (6-8 stitches per inch)
woolen 2-ply construction
\$14.50

[click thumbnail to purchase](#)
available in 32 colors



- 1 HOMEMADE JAM
- 2 LONG JOHNS
- 3 CAMPER
- 4 WOOL SOCKS
- 5 EMBERS
- 6 HAYLOFT
- 7 SAP
- 8 FAUNA
- 9 FOOTHILLS
- 10 TENT
- 11 BIRDBOOK
- 12 BUTTON JAR
- 13 ARTIFACT
- 14 FADED QUILT
- 15 STORMCLOUD
- 16 ALMANAC
- 17 OLD WORLD
- 18 THISTLE
- 19 PLUME
- 20 BLANKET FORT
- 21 POSTCARD
- 22 FOSSIL
- 23 WOODSMOKE
- 24 BARN OWL
- 25 NEST
- 26 TRUFFLE HUNT
- 27 METEORITE
- 28 PUMPERNICKEL
- 29 CAST IRON
- 30 SOOT
- 31 SWEATSHIRT
- 32 SNOWBOUND



CREDITS

ART DIRECTION & PHOTOGRAPHY
WARDROBE STYLING
MODELS

PHOTOGRAPHY ASSISTANT
LOOK BOOK DESIGN
PATTERN LAYOUT
TECHNICAL EDITING

COPY EDITING/PROOFING

TEST KNITTING

PROJECT MANAGEMENT
FULFILLMENT
LOCATION

JARED FLOOD
STEPHANIE GELOT
AINE VONNEGUT
ROY BEASON

MICHELE WANG
JARED FLOOD
JULIE HOOVER
ROBIN MELANSON
CHRISTINE CRAIG
LARISA PHIPPS
MARI TOBITA

LEILA RAABE
BRISTOL IVY
NICOLE DUPUIS
MELISSA WALTERS

LEILA RAABE
ETHAN MACDONALD
XØ PROJECTS; NATHAN ELBOGEN
LOIS ARONOW
THE OLD AMERICAN CANNING FACTORY
BROOKLYN, NY

