

WOOL PEOPLE 3

Look Book





contents

2	Table of Contents
4	Outpost
	THE COLLECTION
8	Reine Cardigan
12	Walpole Cardigan
14	Bayard Hat
16	Edge Hoodie
18	Corrina Tee
22	Ando Wrap Cardigan
24	Fjord Hat
26	Rivage Scarf
30	Rivage Wrap
32	Öljett Hat
40	Haru-Gasumi Tunic
42	Auden Dolman Tee
44	Ticking Cowl
46	Themis Cardigan
48	Breckon Cardigan
52	Boardwalk Shell
54	Biston Cocoon Shrug
58	Pattern Blueprints
75	Yarn Information
79	Meet the Designers
83	Production Credits

outpost

Dear friends,

Around BT headquarters we always laugh about summer knitting. It's the time of year when cotton and linen yarns abound across every seasonal publication in view, yet we find ourselves remaining faithful to our wool – no matter what the temperature – year in and year out. So we figured, why let fall and winter have all the fun? We've got plenty of knitting time in these long, lazy months of summer – let's create a collection just for that.

During the conceptual phase of development I had visions of effortless, lightweight layering garments in a beautiful array of neutral tones dancing in my head. A perfect venture for the extensive palette and downy nature of our *Loft* line. The talented team of designers we curated for this group rose to the challenge and created a bundle of stunning knitwear that's perfect for chilly summer evenings on the porch (or for a head start on your fall knitting).

It's hard to believe our third issue of *Wool People* is already here. Each time around the process gets more enjoyable as we refine our model and continue fostering relationships with guest designers whose work we love. You can read more about all our contributors in our *Meet the Designers* section on page 79.

Now sit back, relax and enjoy the pages of our longest Look Book to date – we think you might like what you see.

All my best,

JARED

Jared Flood





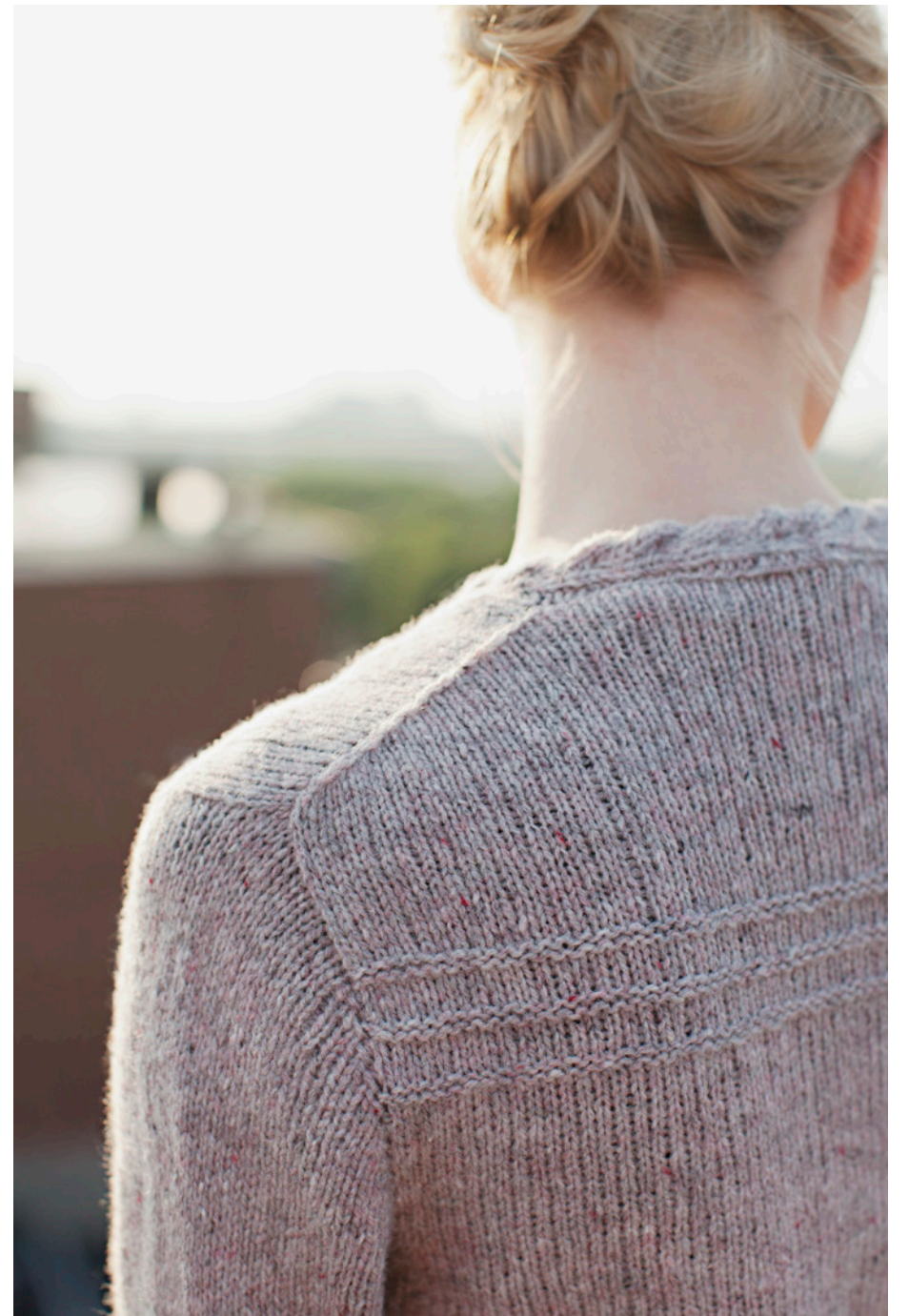
THE COLLECTION





REINE CARDIGAN
designed by Alexis Winslow







WALPOLE CARDIGAN
designed by Hannah Fettig



BAYARD HAT
designed by Bristol Ivy

EDGE HOODIE
designed by Véronik Avery





CORRINA TEE
designed by Ann McCauley







ANDO WRAP CARDIGAN
designed by Yoko Hatta



FJORD HAT
designed by Jenny Gordy





RIVAGE SCARF
designed by Julie Hoover





RIVAGE WRAP
designed by Julie Hoover



ÖLJETT HAT
designed by Jenny Gordy







FERROUS WRAP
Rectangular Version
designed by Grace Anna Farrow



FERROUS WRAP
L-Shape Version
designed by Grace Anna Farrow





HARU-GASUMI TUNIC
designed by Mari Tobita



AUDEN DOLMAN TEE
designed by Bristol Ivy





TICKING COWL
designed by Cirilia Rose





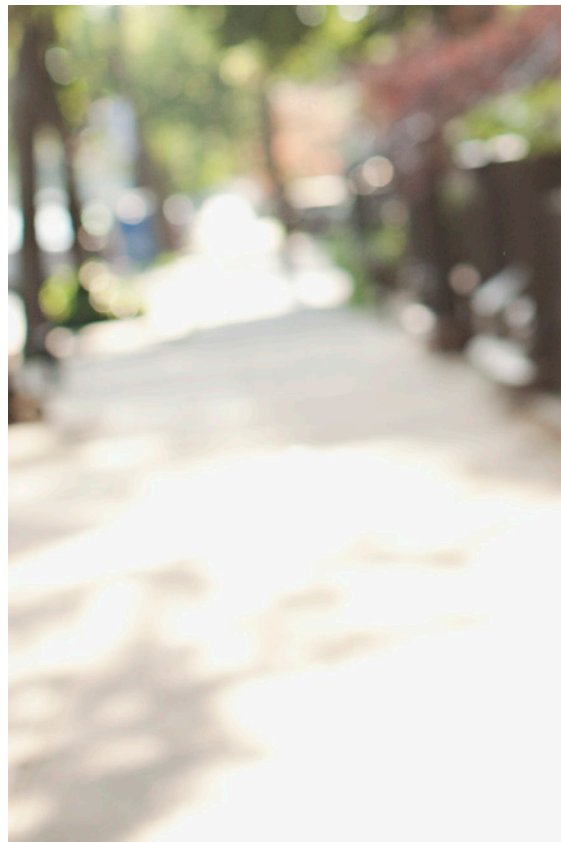
THEMIS CARDIGAN
designed by Robin Melanson



BRECKON CARDIGAN
designed by Amy Christoffers



BOARDWALK SHELL
designed by Heidi Kirrmaier





BISTON COCOON SHRUG
designed by Mercedes Tarasovich-Clark



pattern blueprints





REINE CARDIGAN

by Alexis Winslow

FINISHED DIMENSIONS

30 (33¾, 37½, 41¼, 45, 48¾, 52½)“finished garment at bust (buttoned)
Intended Ease: +0-2”
Sample is size 33¾” with +1¾” ease on model

MATERIALS

4 (5, 5, 6, 6, 7, 7) skeins of Brooklyn Tweed *Loft* (100% American Targhee-Columbia wool; 275 yards/50g). 1100 (1220, 1325, 1450, 1570, 1700, 1845) yards of fingering weight wool yarn
Photographed in color *Postcard*

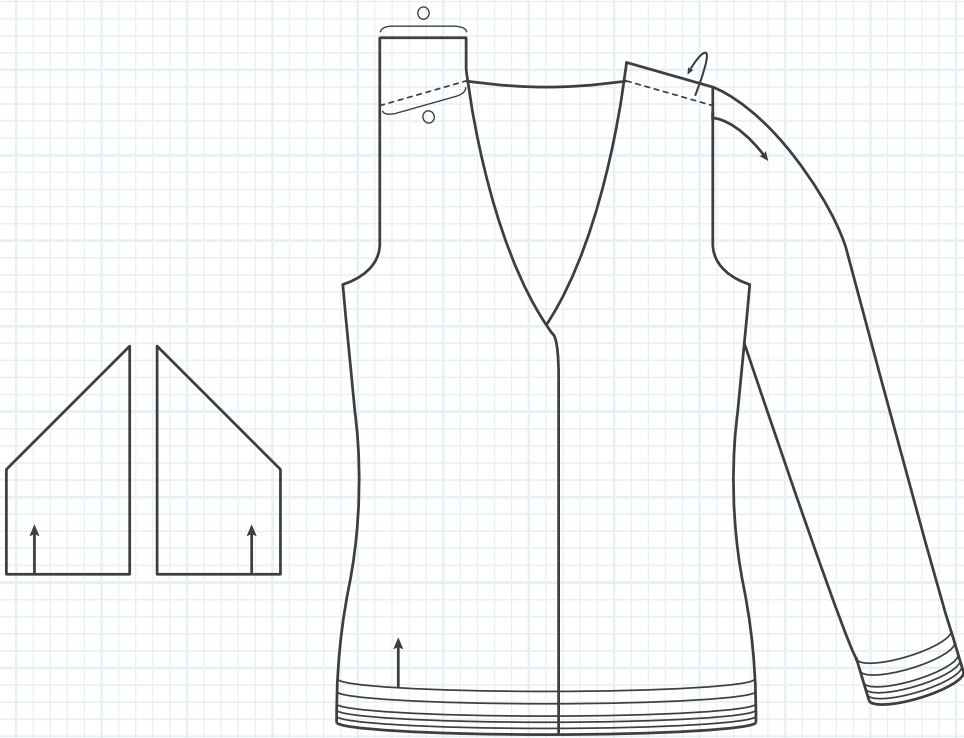
GAUGE

Working Gauge: 23 stitches & 35 rows = 4” in stockinette stitch (knit on RS; purl on WS) with Gauge Needle, before blocking
Finished Gauge: 21¼ stitches & 32½ rows = 4” in stockinette stitch with Gauge Needle; measurement taken from relaxed fabric after wet-blocking

DESIGN DETAILS

Worked seamlessly to underarms, fronts and back split and worked separately for yoke, top-down set-in sleeve is worked seamlessly, welted trims on cuff and hem, reversible cable trimmed pockets and cardigan opening, welted stripe yoke detail, full fashioned shoulder, waist darts

Click photo above to purchase pattern PDF online



WALPOLE CARDIGAN

by Hannah Fettig

FINISHED DIMENSIONS

(34, 36¾, 39¼, 42) (44¾, 47¼, 50, 52¾)“finished (blocked) garment circumference at bust
Intended Ease +1-3”
Sample is size 36¾” with +1¾” ease on model

MATERIALS

(5, 6, 6, 7) (8, 8, 9, 9) skeins of Brooklyn Tweed *Loft* (100% American Targhee-Columbia wool; 275 yards/50g). (1350, 1500, 1650, 1800) (1950, 2100, 2275, 2450) yards of fingering weight wool yarn
Photographed in color *Snowbound*

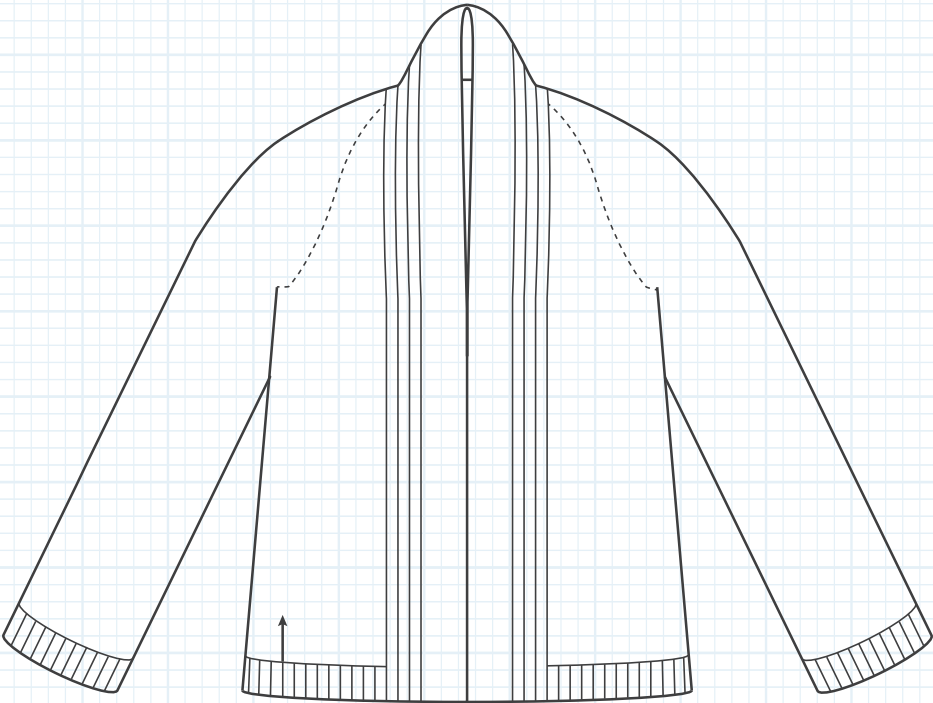
GAUGE

Working Gauge: 25 stitches & 37 rows = 4” in stockinette stitch with Gauge Needle, before blocking
Finished Gauge: 24 stitches & 36 rows = 4” in stockinette stitch with Gauge Needle; measurement taken from relaxed fabric after blocking

DESIGN DETAILS

Entire garment worked seamlessly, twisted double rib hem and cuffs, relaxed open front, no closures, kilt pin optional, ribbed shawl collar worked simultaneously with body, raglan yoke, wide sleeve, cozy oversized fit

Click photo above to purchase pattern PDF online





Click photo above to purchase pattern PDF online

BAYARD HAT

by Bristol Ivy

FINISHED DIMENSIONS

18½" circumference at brim; 24½" circumference at widest point
 8¾" height from base of brim to top-center of crown
 To comfortably fit average adult head sizes (19"-23")

MATERIALS

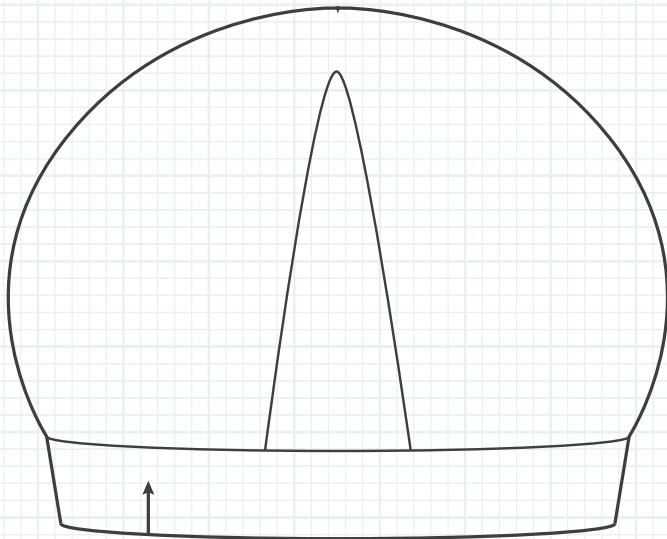
2 skeins (1 per color) of Brooklyn Tweed *Loft* (100% American Targhee-Columbia wool; 50g/275 yards); note that you can make two identical hats (or reverse the colors) with this amount of yarn
 Approximately 130 yards of Color 1 (photographed in color *Woodsmoke*)
 Approximately 95 yards of Color 2 (photographed in color *Old World*)

GAUGE

Working Gauge: 33 stitches and 46 rows = 4" in striped circular stockinette stitch with Gauge Needle, before wet-blocking
 Finished Gauge: 30 stitches and 48 rows = 4" in striped circular stockinette stitch with Gauge Needle, after wet-blocking

DESIGN DETAILS

1x1 striped fabric, twisted rib brim, slipped stitch vertical stripe detail at center back gathers fabric for slouchy silhouette



Click photo above to purchase pattern PDF online

EDGE HOODIE

by Véronik Avery

FINISHED DIMENSIONS

34½ (38½, 42¼, 46, 50, 53¾)" finished (blocked) garment at bust
 Intended Ease: +3-5"
 Sample shown is size 38½" with +3½" of ease on model

MATERIALS

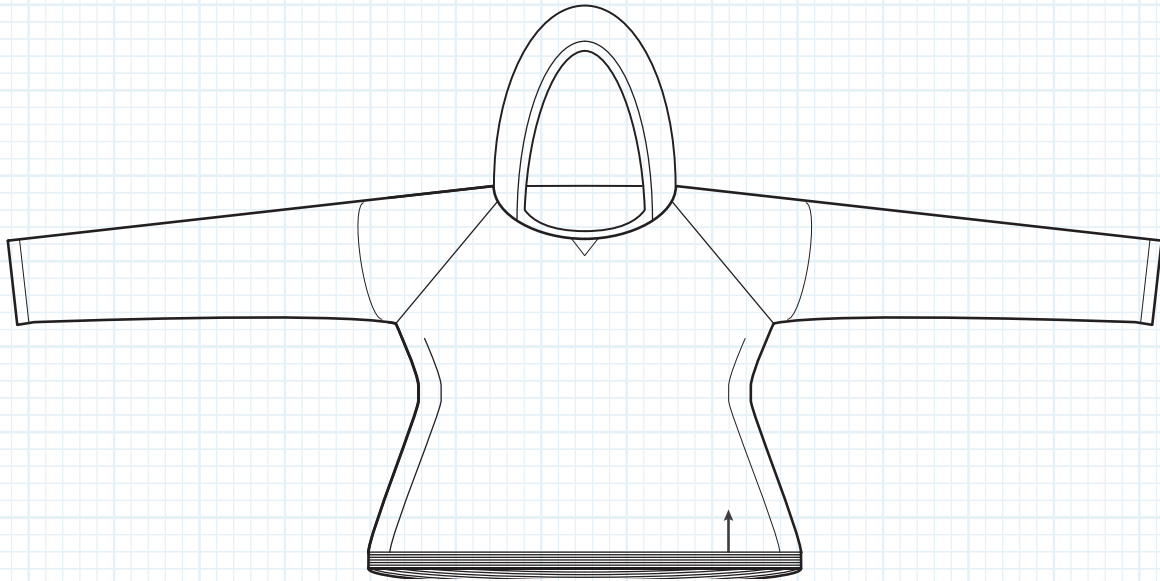
6 (6, 7, 8, 9, 9) skeins of Brooklyn Tweed *Loft* (100% American Targhee-Columbia wool; 275 yards/50g). Approximately 1400 (1590, 1770, 1985, 2205, 2415) yards of fingering weight yarn
 Photographed in color *Sweatshirt*

GAUGE

25 stitches & 36 rows = 4" in circular stockinette stitch with Gauge Needle, before and after blocking

DESIGN DETAILS

A-line silhouette, shaped body hem is shorter in front and longer in back, faced sleeve cuffs and hood edging, openwork side detailing on body, raglan yoke, triangle motif at center front neck, shaped hood, worked seamlessly in the round





CORRINA TEE

by Ann McCauley

FINISHED DIMENSIONS

31¼ (35¼, 39¼, 43¼, 47¼, 51¼)" finished (seamed) garment at bust

Intended Ease: +1-3"

Sample shown is size 35¼" with +¼" ease on model

MATERIALS

4 (5, 5, 6, 7, 7) skeins of Brooklyn Tweed *Loft* (100% American Targhee-Columbia wool; 275 yards/50g). Approximately 1060 (1160, 1325, 1500, 1670, 1855) yards of fingering weight wool yarn

Photographed in color *Blanket Fort*

GAUGE

Working Gauge: 28 stitches & 40 rows = 4" in stockinette stitch with Gauge Needle, before blocking

Finished Gauge: 24 stitches & 37 rows = 4" in Stockinette Stitch with Gauge Needle; measurement taken from relaxed fabric after light blocking (with slight stretch)

DESIGN DETAILS

4-piece construction, slight A-line silhouette, set-in sleeves, lattice detailing at body hem and sleeve cuff, triangular neckline detail at center front and center back, t-shirt inspired

[Click photo above to purchase pattern PDF online](#)



ANDO WRAP CARDIGAN

by Yoko Hatta

FINISHED DIMENSIONS

41 (44¾, 48¾, 52½, 56¼, 60¼)" blocked garment circumference at bust, with fronts slightly overlapped

Intended Ease: +6-8"

Sample shown is size 41" with +8" ease on model

MATERIALS

5 (6, 7, 7, 8, 8) skeins of Brooklyn Tweed *Loft* (100% American Targhee-Columbia Wool; 275 yards/50g). Approximately 1335 (1480, 1655, 1830, 2010, 2195) yards of fingering weight wool yarn

Photographed in color *Foothills*

GAUGE

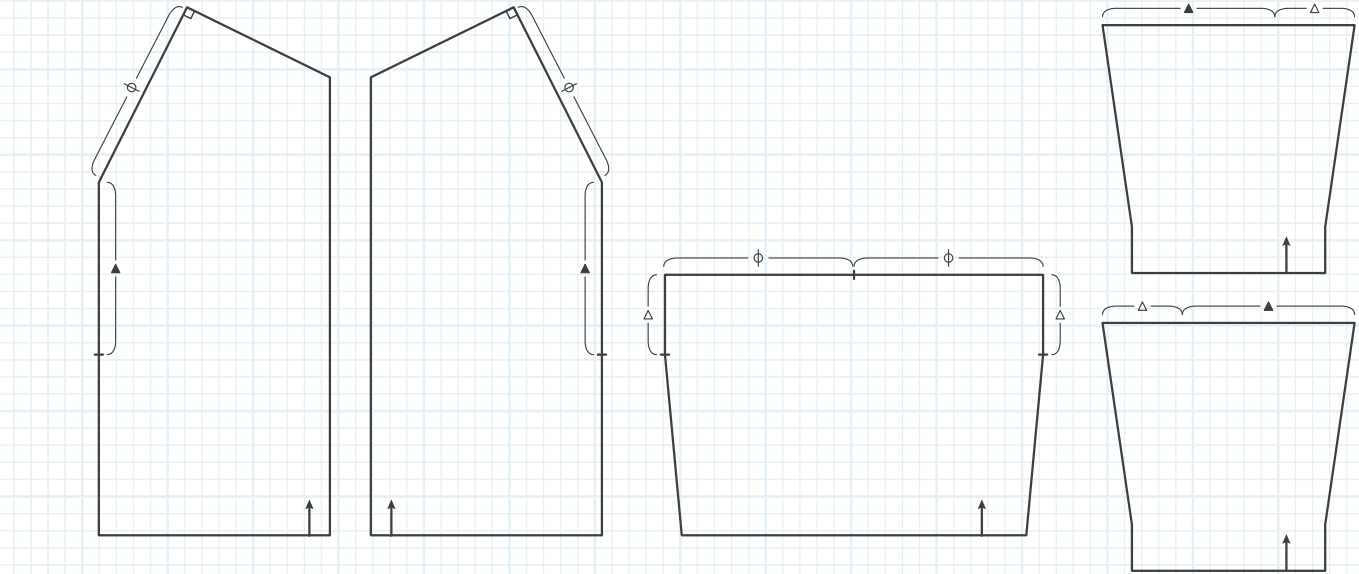
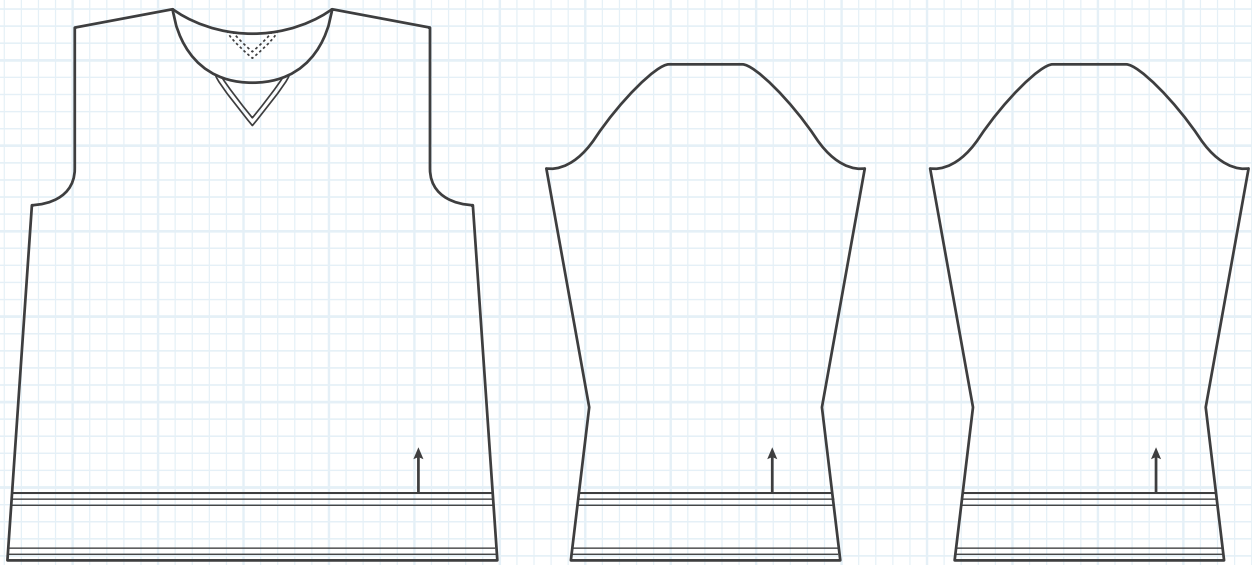
25 stitches & 34½ rows = 4" in stockinette stitch with Gauge Needle, before and after blocking

25 stitches & 34½ rows = 4" in cable pattern from chart, using needles one size larger than Gauge Needle, before and after blocking

DESIGN DETAILS

5-piece construction, architectural shape, allover woven cable adorns front panels, fronts wrap around shoulders and join at center back, long sleeves, cozy oversized fit, kilt pin closure, shape flatters a wide variety of body types

[Click photo above to purchase pattern PDF online](#)





FJORD HAT

by Jenny Gordy

FINISHED DIMENSIONS

19½" circumference at brim, unstretched; 20" circumference at widest point, unstretched; 9¼" height from base of brim to top-center of crown.
To comfortably fit average adult head sizes (19-23½" circumference)

MATERIALS

1 skein of Brooklyn Tweed *Shelter* (100% American Targhee-Columbia Wool; 140 yards/50g). Approximately 140 yards of worsted weight wool yarn
Photographed in color *Fossil*

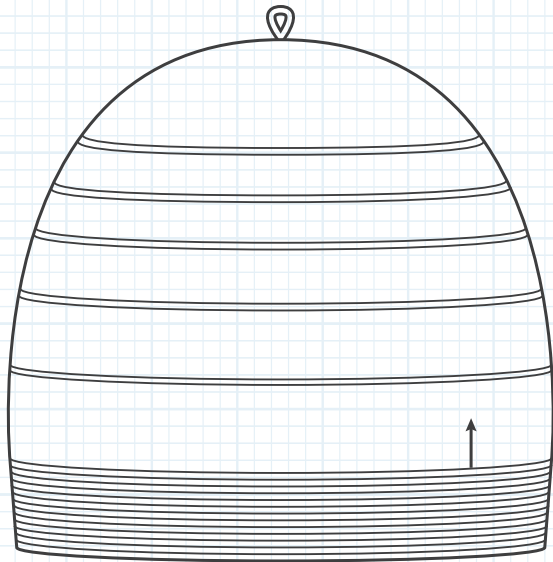
GAUGE

Working & Finished Gauge: 18 stitches and 28 rounds = 4" in circular stockinette stitch with Gauge Needle (gauge measurement is the same before and after blocking)

DESIGN DETAILS

One piece construction, circular knitting, bottom-up, wide garter stitch brim, purl ridges spaced with increasing frequency towards crown motif, garter crown features a star motif, crocheted top-loop, slightly slouchy fit, hat body is gently shaped from brim to crown

[Click photo above to purchase pattern PDF online](#)



RIVAGE WRAP & SCARF

by Julie Hoover

FINISHED DIMENSIONS

Wrap (Scarf) Version
25" (12") width, 76" length; relaxed after blocking

MATERIALS

Three colors of Brooklyn Tweed Loft (100% American Targhee-Columbia Wool; 275 yards/50g) in the following amounts:
Color A: Three (One) skein(s) [620 (255) yards]; photographed in color *Sweatshirt (Fossil)*
Color B: Two (One) skein(s) [315 (160) yards]; photographed in color *Fossil (Tent)*
Color C: Three (Two) skeins [648 (312) yards]; photographed in color *Woodsmoke (Foothills)*

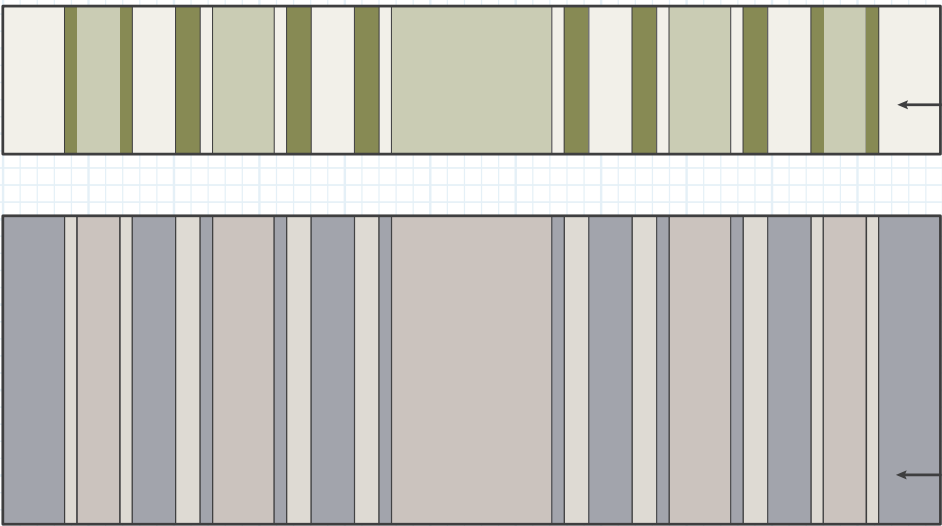
GAUGE

23 stitches and 33 rows = 4" in stockinette stitch with Gauge Needle; measurement taken from relaxed fabric after blocking

DESIGN DETAILS

One piece construction, knit flat from end to end, two color options provided (experimentation encouraged!), luxurious size and drape, slipped stitch single rib selvedge trims side edges

[Click photo above to purchase pattern PDF online](#)





Click photo above to purchase pattern PDF online

ÖLJETT HAT

by Jenny Gordy

FINISHED DIMENSIONS

19½" circumference at brim, unstretched; 20½" circumference at widest point, unstretched; 9½" from base of brim to top of crown
To comfortably fit average adult head sizes (19-23½" circumference)

MATERIALS

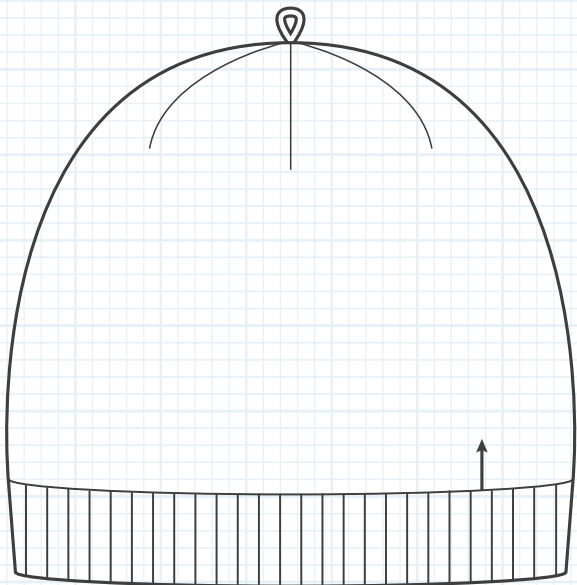
1 skein of Brooklyn Tweed *Loft* (100% American Targhee-Columbia wool; 275 yards/50g) in each of two different colors. Approximately 135 yards of fingering weight wool yarn in both colors; note that you can make two identical hats with this amount of yarn
Photographed in marled colors *Fossil & Truffle Hunt*

GAUGE

Working Gauge: 20 stitches and 29 rounds = 4" in circular stockinette stitch with Gauge Needle, before blocking
Finished Gauge: 19 stitches and 29 rounds = 4" in circular stockinette stitch with Gauge Needle; measurement taken from relaxed fabric after blocking

DESIGN DETAILS

One piece construction, circular knitting, bottom-up, marled fabric created by working with two strands of yarn in different colors, crocheted top-loop, slouchy fit, double-eyelet column shaping motif on crown



Click photo above to purchase pattern PDF online

FERROUS WRAP (2 VERSIONS)

by Grace Anna Farrow

FINISHED DIMENSIONS

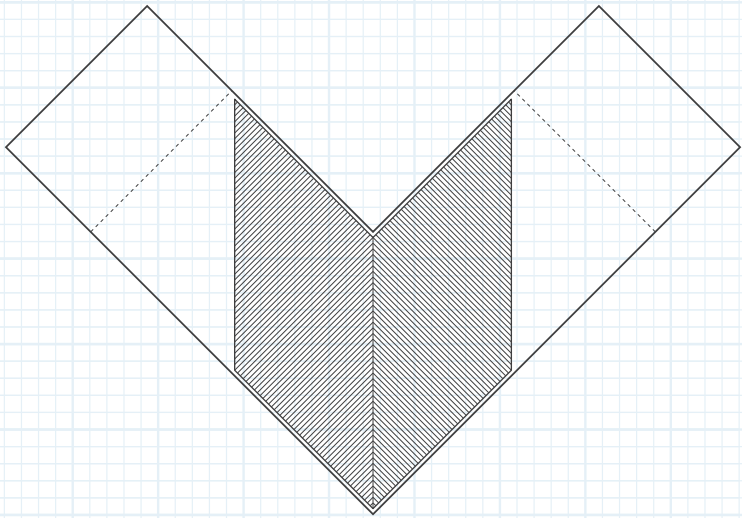
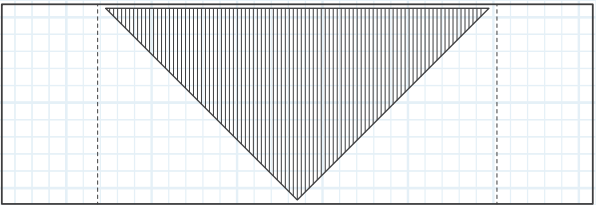
Version A1 (A2, A3, A4) – Rectangular Wrap: Narrow Version w/o mesh extension (Narrow Version w/mesh extension, Wide Version w/o mesh extension, Wide Version w/mesh extension
Blocked rectangle measures 25" x 50" (30" x 60", 25" x 80", 30" x 80")
Version B1 (B2, B3, B4) – L-Shaped Wrap: Narrow Version w/o mesh extension (Narrow Version w/mesh extension, Wide Version w/o mesh extension, Wide Version w/mesh extension)
Blocked L-shape measures 25 (30, 25, 30)" wide & 50 (60, 65, 70)" long on each side of outer edge

MATERIALS

Version A1 (A2, A3, A4): 4 (6, 6, 7) skeins of Brooklyn Tweed *Loft* (100% American Targhee-Columbia wool; 275 yards/50g). 975 (1430, 1560, 1895) yards of fingering weight wool yarn
Sample A shown is Version A2, photographed in color *Stormcloud*
Version B1 (B2, B3, B4): 6 (8, 8, 10) skeins of Brooklyn Tweed *Loft* (100% American Targhee-Columbia wool; 275 yards/50g). 1480 (2160, 2070, 2630) yards of fingering weight wool yarn
Sample B shown is Version B3, photographed in color *Old World*

GAUGE

Finished Gauge: 16 stitches & 30 rows = 4" in Mesh Stitch with Gauge Needle; after light lace-blocking with blocking wires
16 stitches & 30 rows = 4" in Garter Stitch with Gauge Needle; after light lace-blocking with blocking wires





HARU-GASUMI TUNIC

by Mari Tobita

FINISHED DIMENSIONS

34 (36¼, 38, 42, 46, 50)“ blocked garment circumference at bust

Intended Ease: +0-2”

Sample shown is size 34” with +2” of ease on model

MATERIALS

Brooklyn Tweed *Loft* (100% American Targhee-Columbia Wool; 275 yards/50g): 4 (5, 5, 6, 6, 7) skeins of MC; 1 skein of each of CC1 and CC2

MC: 1090 (1175, 1265, 1415, 1585, 1755) yards (photographed in color *Fossil*)

CC1: 65 (70, 75, 80, 90, 100) yards (photographed in color *Postcard*)

CC2: 145 (155, 165, 180, 205, 225) yards (photographed in color *Blanket Fort*)

GAUGE

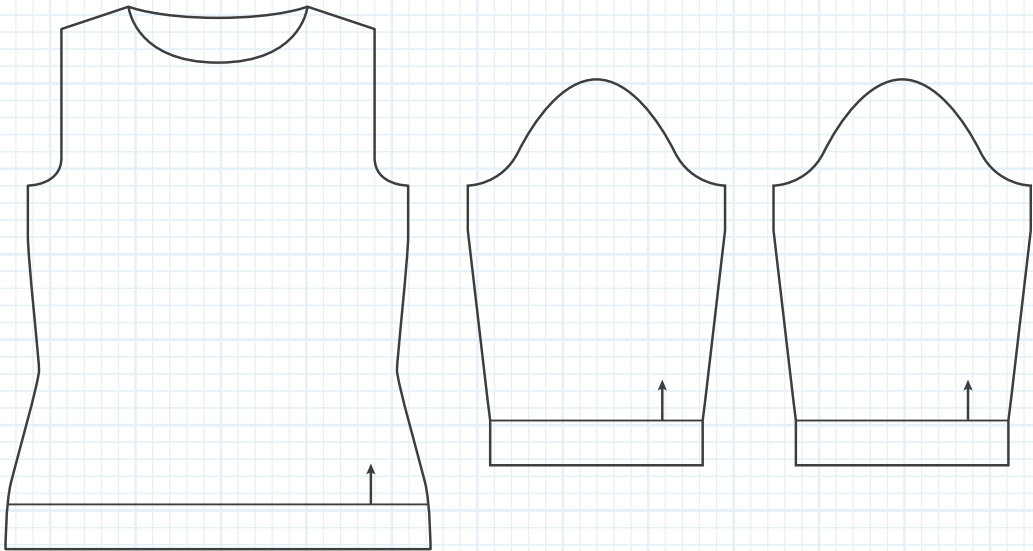
Working Gauge: 29 stitches & 40 rows = 4” in Stockinette Stitch (knit on RS; purl on WS) with Gauge Needle; 29 stitches & 27 rows = 4” wide and 2” tall over Trim Stitch pattern with Gauge Needle; measurements before blocking

Finished Gauge: 28 stitches & 40 rows = 4” in Stockinette Stitch; 29 stitches & 27 rows = 4” wide and 2” tall over Trim Stitch pattern with Gauge Needle; measurement taken from relaxed fabric after blocking

DESIGN DETAILS

4-piece construction, pieces knit flat from bottom up, set-in sleeve, waist shaping, wide neck with rolled edge trim, 3-color textured stitch hem and cuffs

[Click photo above to purchase pattern PDF online](#)



AUDEN DOLMAN TEE

by Bristol Ivy

FINISHED DIMENSIONS

36 (40, 44, 48, 52, 56, 60, 64)“ finished (blocked) circumference at bust

Intended ease: +4-6”

Sample shown is size 40 with +5” ease on model

MATERIALS

4 (5, 5, 6, 7, 7, 8, 9) skeins of Brooklyn Tweed Loft (100% American Targhee-Columbia wool; 275 yards/50g). Approximately 990 (1150, 1315, 1500, 1690, 1815, 2015, 2250) yards of fingering-weight yarn

Photographed in color *Barn Owl*

GAUGE

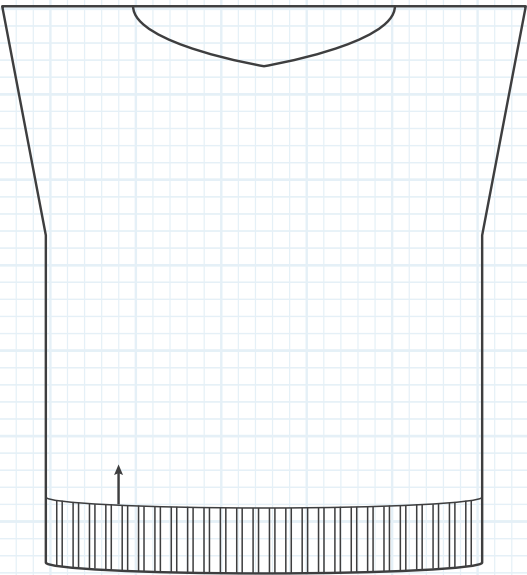
Working Gauge: 29 stitches & 40 rows = 4” in Fern Pattern with Gauge Needle, before blocking

Finished Gauge: 24 stitches & 36 rows = 4” in Fern Pattern with Gauge Needle; measurement taken from relaxed fabric after blocking (with slight stretch); 25-stitch panel from chart measures 41⅙” wide after blocking

DESIGN DETAILS

1-piece construction with sleeve pick-up, dolman shape, knit circularly and split for fronts and back of yoke, textured fern pattern rib body fabric, 3x1 ribbed trims, wide neck

[Click photo above to purchase pattern PDF online](#)



TICKING COWL

by Cirilia Rose

FINISHED DIMENSIONS

80” circumference, 8” height; measurements taken from relaxed fabric after blocking

MATERIALS

Three colors of fingering weight wool yarn in varying amounts:
Color 1: Approximately 430 yards (photographed in color *Woodsmoke*)
Color 2: Approximately 150 yards (photographed in color *Camper*)
Color 3: Approximately 50 yards (photographed in color *Wool Socks*)

4 skeins of Brooklyn Tweed Loft (100% American Targhee-Columbia Wool; 275 yards/50g); 2 skeins of Color 1, 1 skein each of Color 2 and Color 3

GAUGE

22 stitches and 36 rounds = 4” in circular stockinette stitch with Gauge Needle; measurement taken from relaxed fabric after blocking with very slight stretch

DESIGN DETAILS

Ticking-inspired striping sequence and color palette, reverse stockinette stripe motif, ribbed trim with rolled edge along cast-on and bind-off edges, long loop for double- or triple-wrap



Click photo above to purchase pattern PDF online

THEMIS CARDIGAN

by Robin Melanson

FINISHED DIMENSIONS

31¼ (35, 38, 41¼, 44½, 47¾, 51)” circumference at bust, buttoned
Suggested Ease: +1-3”
Sample shown is size 35” with +0” ease on model

MATERIALS

4 (4, 5, 5, 6, 6, 7) skeins of Brooklyn Tweed *Loft* (100% American Targhee-Columbia Wool; 275 yards/50g). Approximately 995 (1060, 1160, 1295, 1415, 1530, 1660) yards of fingering weight wool yarn
Photographed in color *Meteorite*

GAUGE

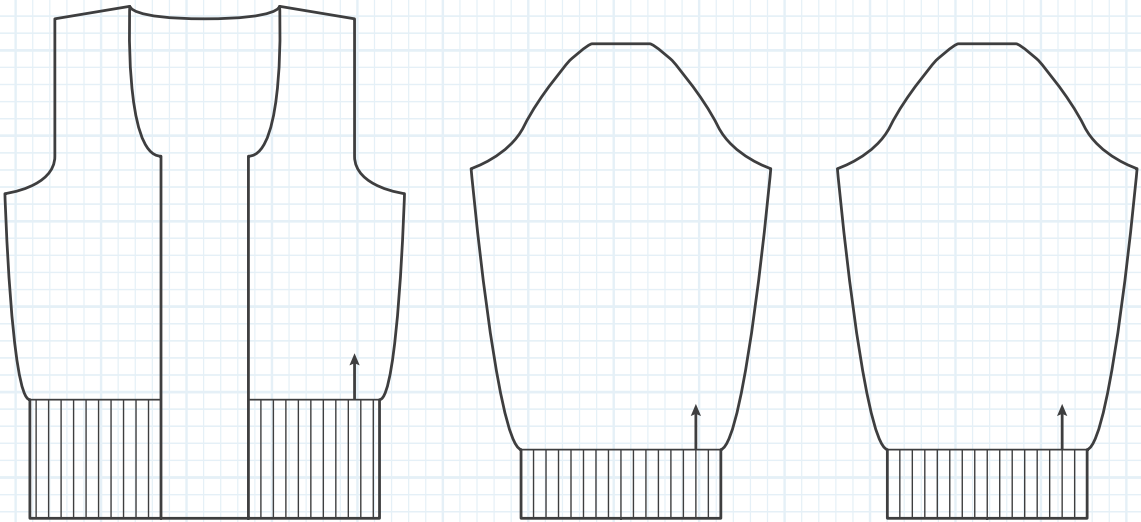
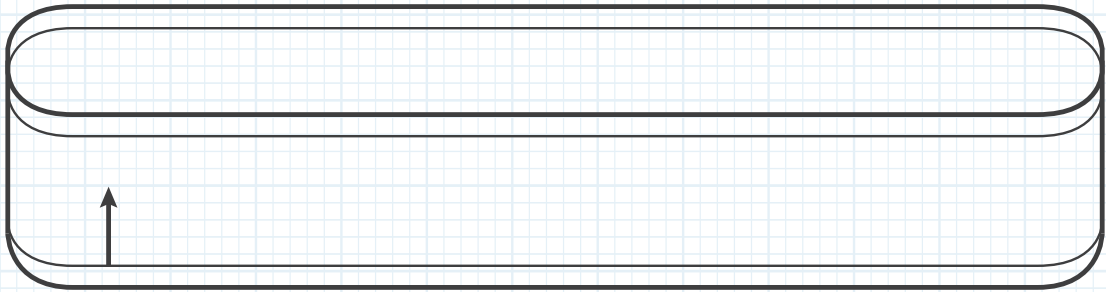
25 stitches & 34 rows = 4” in stockinette stitch with Gauge Needle, before and after blocking
27 stitches & 40 rows = 4” in eyelet ribbing pattern with needle two sizes smaller than Gauge Needle, relaxed after blocking

DESIGN DETAILS

5-piece construction, pieces worked flat from bottom up, set-in sleeve, cropped fit, waist shaping, eyelet rib hem and cuff trim, slanting eyelet garter detail adorns front band, diverging eyelet rib shoulder detail



Click photo above to purchase pattern PDF online



BRECKON CARDIGAN

by Amy Christoffers

FINISHED DIMENSIONS

36 (39, 42, 44¾, 47¾, 50¾)" finished (blocked) garment at bust

Intended Ease: +2-3"

Sample shown is size 36" with +4" ease on model

MATERIALS

5 (6, 6, 7, 7, 7) skeins of Brooklyn Tweed *Loft* (100% American Targhee-Columbia wool; 275 yards/50 g). 1335 (1445, 1550, 1645, 1745, 1860) yards of fingering weight wool yarn (sport weight is more appropriate for this gauge, if substituting)

Photographed in color *Truffle Hunt*

GAUGE

Finished Gauge: 22 stitches & 32 rows/rounds = 4" in Granite Stitch with Gauge Needle; measurement taken from relaxed fabric after light blocking (with very slight stretch)

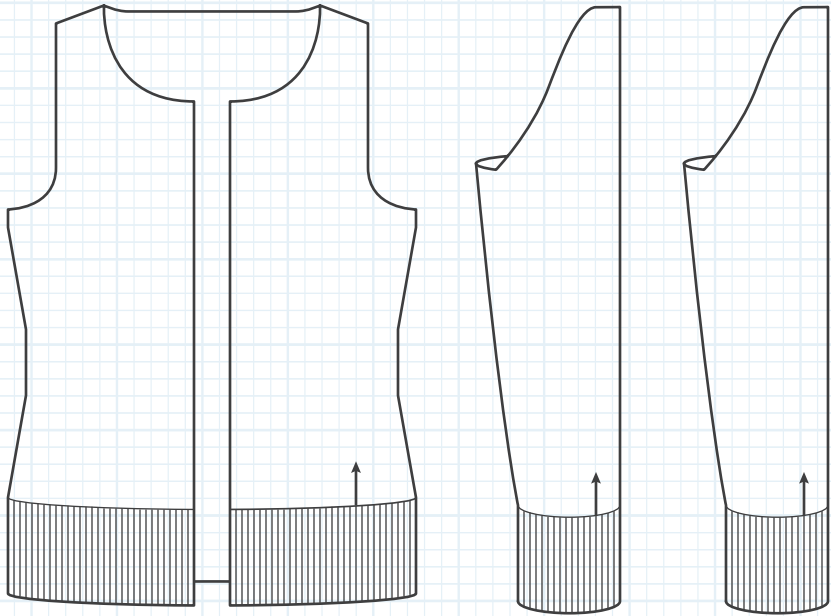
23 stitches & 32 rows = 4" in Charted Lace pattern with Gauge Needle; measurement taken from relaxed fabric after blocking (with very slight stretch)

DESIGN DETAILS

3-piece construction, body worked circularly to underarm then split into 3 parts for yoke, cable and lace motifs adorn fronts and back, allover granite stitch on sleeves, 1x1 ribbed trims, wide neck, button closures



Click photo above to purchase pattern PDF online



BOARDWALK SHELL

by Heidi Kirrmaier

FINISHED DIMENSIONS

(30, 32¾, 34½, 36½) (38½, 41, 44¼, 48)" finished (blocked) garment at bust

Intended Ease: +1-2"

Sample shown is size 34½" with +2½" ease on model

MATERIALS

(3, 3, 3, 4) (4, 4, 4, 5) skeins of Brooklyn Tweed *Loft* (100% American Targhee-Columbia wool; 50g/275 yards). (725, 775, 825, 875) (950, 1000, 1100, 1200) yards of fingering-weight wool yarn

Photographed in color *Woodsmoke*

GAUGE

25 stitches & 37 rows/rounds = 4" in circular stockinette stitch with Gauge Needle, after blocking with slight stretch

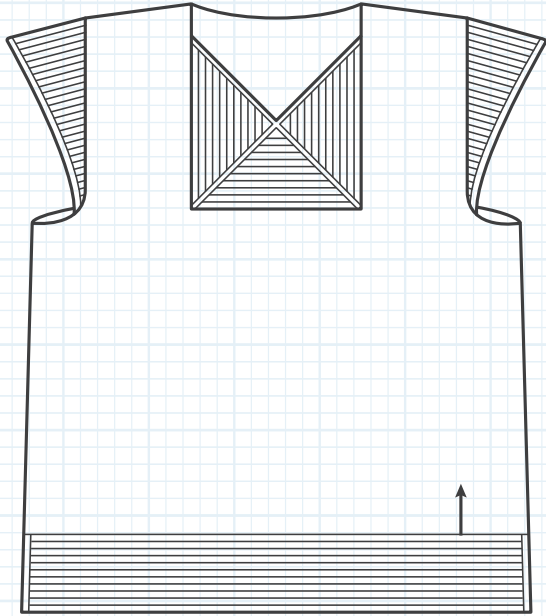
25 stitches & 50 rows = 4" in Welt Pattern with Gauge Needle, after blocking with slight stretch

DESIGN DETAILS

1-piece construction, garment worked circularly from bottom up and split at underarm, welted hem with side vents, thin i-cord trim along armhole and neck opening, mitered welt neck detail, welted sleeve caps are worked concurrently with yoke, slight A-line silhouette



Click photo above to purchase pattern PDF online





Click photo above to purchase pattern PDF online

BISTON COCOON SHRUG

by Mercedes Tarasovich-Clark

FINISHED DIMENSIONS

28 (29, 31, 32, 34)“finished (blocked) body length measurement, suggested to fit bodies with bust measurement of 34 (36, 40, 44, 48)“
Sample shown is size 28” on a model with 35” bust

MATERIALS

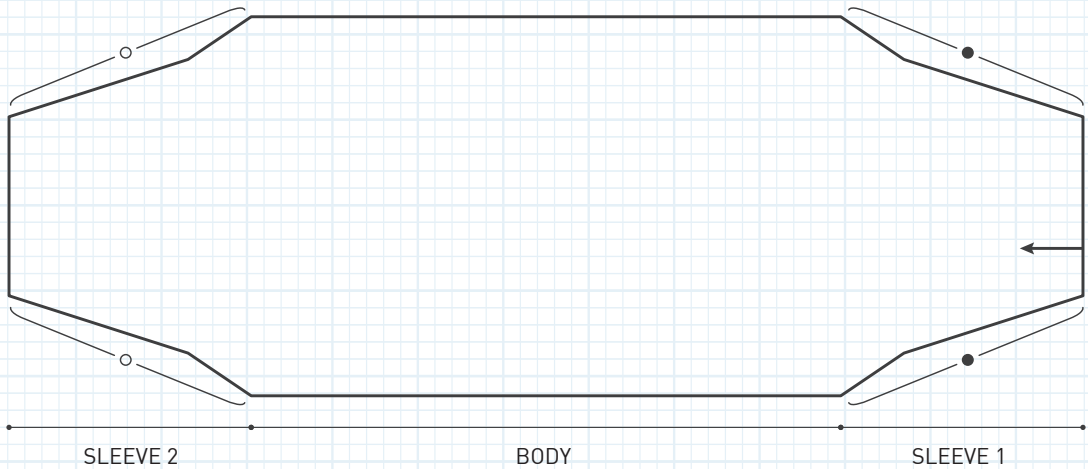
4 (4, 4, 5, 5) skeins of Brooklyn Tweed *Loft* (100% American Targhee-Columbia wool; 275 yards/50g). Approximately 945 (995, 1085, 1150, 1245) yards of fingering weight wool yarn
Photographed in color *Soot*

GAUGE

Working Gauge: 24 stitches & 32 rows = 4” in reverse stockinette stitch with Gauge Needle, before blocking
Finished Gauge: 23 stitches & 32 rows = 4” in reverse stockinette stitch with Gauge Needle; measurement taken from relaxed fabric after blocking (with no stretch)

DESIGN DETAILS

Simple one-piece construction, 3-quarter length sleeve, garment worked flat from cuff to cuff, two seams create final shape, textured band is picked up around body opening and worked circularly, chevron band detail at center neck and center back

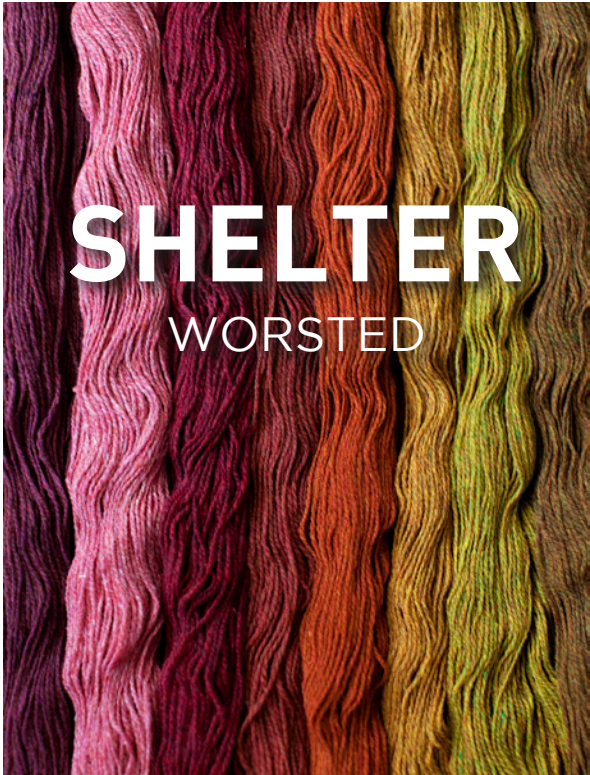


yarn information



our yarns

Grown in Johnson County, Wyoming. Spun with care in historic Harrisville, New Hampshire.



SHELTER
50 gram skein/140 yards
worsted weight (4-5 stitches per inch)
woolen 2-ply construction
\$12.50

17 colors available
click thumbnail to purchase



LOFT
50 gram skein/275 yards
fingering weight (6-8 stitches per inch)
woolen 2-ply construction
\$14.50

32 colors available
click thumbnail to purchase



choose your color
Our custom heathers are all created from 11 base solids, giving them a unique cross-range harmony.

- 1 Homemade Jam *
- 2 Long Johns *
- 3 Camper
- 4 Wool Socks *
- 5 Embers *
- 6 Hayloft *
- 7 Sap *
- 8 Fauna
- 9 Foothills
- 10 Tent *
- 11 Birdbook
- 12 Button Jar *
- 13 Artifact
- 14 Faded Quilt *
- 15 Stormcloud
- 16 Almanac *
- 17 Old World
- 18 Thistle *
- 19 Plume
- 20 Blanket Fort
- 21 Postcard
- 22 Fossil *
- 23 Woodsmoke *
- 24 Barn Owl
- 25 Nest *
- 26 Truffle Hunt
- 27 Meteorite
- 28 Pumpernickel *
- 29 Cast Iron
- 30 Soot *
- 31 Sweatshirt *
- 32 Snowbound

Colors marked with an asterisk (*) are available in both *Shelter* and *Loft*. Colors with no asterisk are only available in *Loft*.

meet the designers





VÉRONIK AVERY is the owner of St-Denis Yarns and the author of *Knitting Classic Style* and *Knitting 24/7* (both published by STC). Her work has appeared in countless publications, including knitting books (*Weekend Knitting*, *Handknit Holidays*, *Wrap Style*, *Lace Style*, *Bag Style*, *Color Style*, *Simple Style*, *Knitting Socks with Hand Painted Yarns*), magazines (*Interweave Knits*, *Vogue Knitting*, *Woman's Day*), and online (*Knitty*, *Ravelry*).

See more of Véronik's work at www.stdenisyarns.com. Véronik designed the *Edge Hoodie* on page 16.



AMY CHRISTOFFERS is a knitwear designer living in rural Vermont with her husband, son and cat. They live in a tiny house surrounded by trees and stuffed full of books and yarn.

Visit her site www.savoryknitting.com to see more of her work. Amy designed the *Breckon Cardigan* on page 48.



GRACE ANNA FARROW learned how to knit on pickup sticks when she was in the third grade. In the many years that followed she has grown into a knitter hailed by *Vogue Knitting* as “the advanced knitter’s best friend”. She is the author of *The Fine Line*.

Find more of her work at www.astitchtowear.com. Grace designed the *Ferrous Wraps* on pages 34-39.



HANNAH FETTIG designs knitwear in Portland, Maine. She is the author of *Closely Knit* and co-author of *Coastal Knits*, the smash self-published hit released in Fall 2011. Her designs have also appeared in *Interweave Knits*, *Knitscene* and *Knitty* magazines.

You can view her full line of Knitbot patterns and obtain wholesale information at www.knitbot.com. Hannah designed the *Walpole Cardigan* on page 12.



JENNY GORDY designs clothing, home goods, knitted accessories, and sewing patterns for her brand *Wiksten*. Before starting her own company, she worked as a technical designer and fit model in New York City and studied Patternmaking at the Fashion Institute of Technology.

She now lives with her husband and three hilarious cats in Iowa, where she spends her evenings knitting, wisecracking, and watching old movies. You can find her website and blog at www.shopwiksten.com. Jenny designed the *Fjord Hat* on page 24 and the *Öljett Hat* on page 32.



Photo Wakana Baba

YOKO HATTA is a renown Japanese knitwear designer, known there for her label *Kazekobo*. Yoko began her career designing boutique knitwear in Tokyo over 30 years ago. Soon after she began designing knitwear for handknitters and has been doing so ever since. She has just completed work on three books that will release later this year in Japan. She lives and works in Tokyo.

Read more about Yoko on her website www.kazekobo.net. Yoko designed the *Ando Wrap Cardigan* on page 22.



JULIE HOOVER

Dedicated to clean, sophisticated, contemporary design, Julie recently retired her freelance art director business to focus on her long-time passion – playing with textiles.

She’s also a serious foodie and photo taker. Keep up with her at www.juliehoover.com. Julie designed the *Rivage Wrap & Scarf* on pages 26-31.



BRISTOL IVY is a knitting designer and fiber artist from Portland, Maine. Her work focuses on the intersection between classic tailoring and innovative technique, creating a unique and wearable aesthetic while maintaining knitterly appeal.

Keep up with Bristol at www.blackbirdturning.blogspot.com. Bristol designed the *Auden Shell* on page 42 and the *Bayard Hat* on page 14.



HEIDI KIRRMAIER has been creating things all her life, and enjoys sharing her knitwear designs with a growing number of knitters around the globe. Her style draws from her passions for the natural world, and is shaped by the rigors of her training as an electrical engineer.

Heidi lives and works near the mountains in Calgary, Canada, and spends as much time as possible at her coastal get-away in Santa Barbara, California. Heidi designed the *Boardwalk Shell* on page 52.



ANN MCCAULEY

After enjoying a long performance career in modern dance that was a peak life experience, Ann found knitting as her new creative outlet. Ann grew up in beautiful rural Virginia and now makes her home outside of Boulder, Colorado.

She is the author of *The Pleasures of Knitting: Timeless Feminine Sweaters* and *Together or Separate: Knitting the New Twinset*. Her work has also been featured on the *Knitty Gritty* television episode *Delightful Details*. See more from Ann at www.annmccauleyknits.com or on her Ravelry.com designer page. Ann designed the *Corrina Tee* on page 18.



ROBIN MELANSON is a freelance knitwear designer and technical editor, and a production assistant with *Twist Collective*. She has designed extensively for books and magazines, yarn companies, and stage productions.

She is the author of *Knitting New Mittens & Gloves* (STC Craft, 2008), and lives in Montreal, Quebec. Visit her at www.robinmelanson.com. Robin designed the *Themis Cardigan* on page 46.



CIRILIA ROSE lives in the Pacific Northwest and is the Creative Director for *Skacel Collection Inc.* She spends her days tangled up in yarn and her evenings making messes in the kitchen or knitting at her local cinema.

Follow her fiber exploits at www.skacelfiberstudio.com and www.bricoleurknits.com. Cirilia designed the *Ticking Cowl* on page 44.



MERCEDES TARASOVICH-CLARK designs, writes, and obsesses about knitting from her home in Birmingham, AL, and while traveling the country. Her designs can be seen in *Interweave Knits*, *Knitscene*, and *Knitty.com*, as well as *Brioche Knitting Basics with Mercedes Tarasovich-Clark*, a Knitting Daily DVD workshop produced by Interweave Press.

See more from Mercedes at www.mercedesknits.com. Mercedes designed the *Biston Cocoon Shrug* on page 54.



MARI TOBITA

Originally from Japan, Mari now lives and creates in New York City. When she's not busy building puppets, she's usually found working on her next knitting design.

Samples of her work can be found on her Ravelry.com designer page. Mari designed the *Haru Gasumi Tunic* on page 40.



ALEXIS WINSLOW is a Brooklyn-based printed textile designer, specializing in children's fabrics. We love her bold use of graphic, geometric patterns. Her vintage-inspired designs make us nostalgic for cozy knitwear of days gone by.

You can find more of her work, writing, and videos at www.knitdarling.com. Alexis designed the *Reine Cardigan* on page 8.

PHOTOGRAPHY & ART DIRECTION

Jared Flood

MODELS

Tessa Basore
Hannah Metz

WARDROBE STYLING

Karen Schaupteter
Jared Flood

LOCATION

Thayer Gowdy
Brooklyn, NY

TECH EDITING

Robin Melanson
Larisa Phipps

COPY EDITING & PROOFING

Jared Flood
Leila Raabe
Bristol Ivy

LAYOUT & GRAPHIC DESIGN

Jared Flood

TEST KNITTING

Melissa Walters

FULFILLMENT

Ethan MacDonald



