



BROOKLYN TWEED

SPRING THAW

Winter to Spring '12 // Look Book





OUTPOST

Hello, Friends!

I'm writing to you on a sunny March afternoon at the tail end of one of the mildest East Coast Winters I can remember. While we're still mourning the absence of any truly exciting snowfall here this year, I can't deny that the longer stretches of daylight and other hints of Spring are being thoroughly savored too. The changing of the seasons seems appropriate for the release of our Design Team's newest collection, which was conceived around the idea of transition.

When we began work on these designs, colorwork seemed to be a unanimous inspiration for each of us. The timing was good also, since we finally had an opportunity to tap into *Loft's* full 32-color palette! Because we were designing our last body of work (*The Loft Collection*; November '12) as the mill was spinning the inaugural run of the new yarn, we were forced to work in a piecemeal fashion – glad for whatever colors were available when needed, and pining for those that were yet to be spun.

You'll find more than just colorwork here, though. It just wouldn't feel right to ignore all our other favorites: Cables, Lace, and dear old Stockinette too. We've got a little bit of everything and hope you like what you see.

We shot this season's collection on a sunny February day in a beautiful light-filled loft in the Brooklyn neighborhood of Dumbo.

We hope you'll take pleasure in what we've been cooking up behind the scenes here this Winter, and we look forward to seeing your projects as they bloom through Spring.

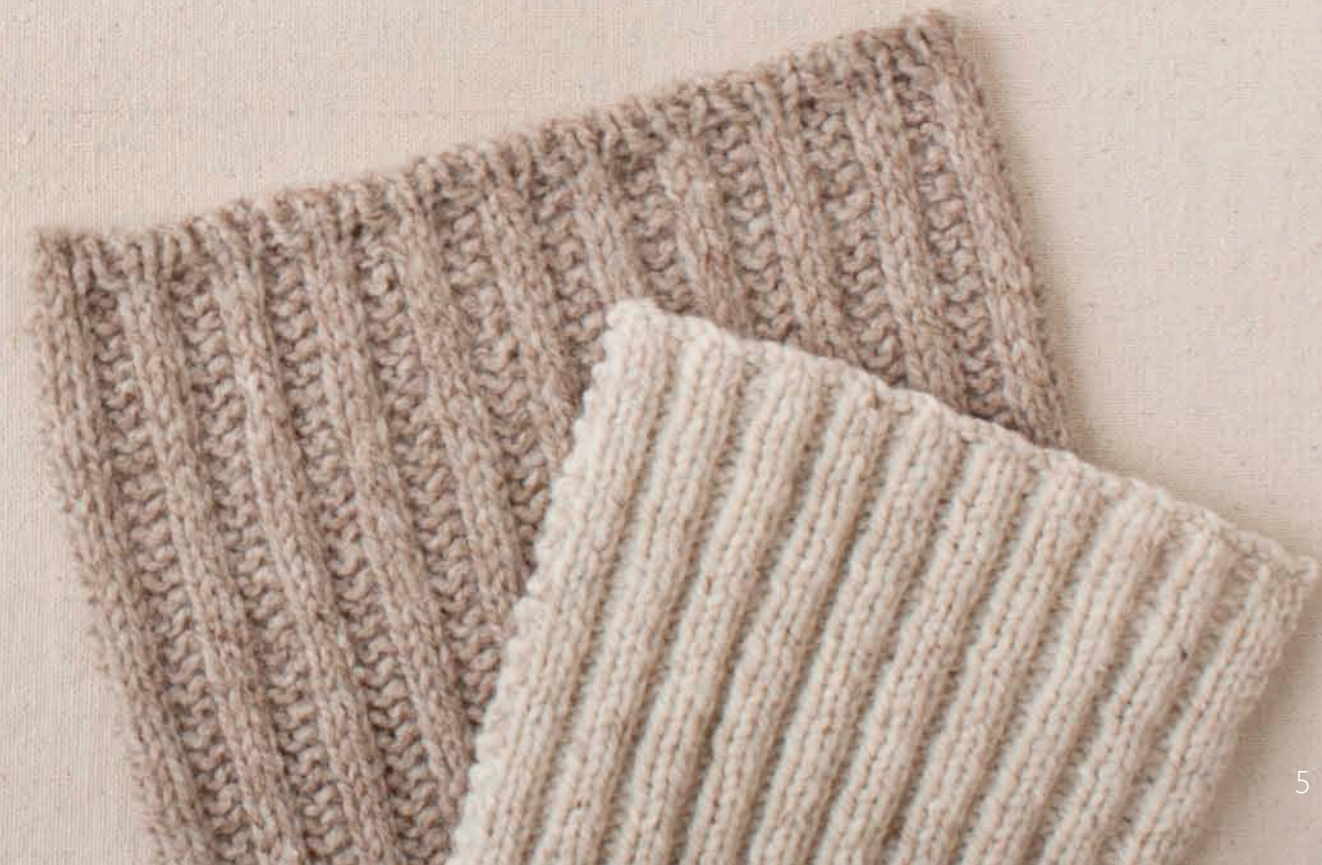
All our very best,

Jared and the BT Design Team

Table of Contents

Click on any of the designs below to be taken to the corresponding photography spread

6-7	Oslo Scarf by Michele Wang	20-23	Seasons Hat by Jared Flood	34-37	Quill Shawl by Jared Flood	48-51	Talon Throw by Jared Flood
8-11	Stasis Pullover by Leila Raabe	24-25	Chinook Gloves by Jared Flood	38-39	Gloaming Mittens by Leila Raabe	52-55	Exeter Cardigan by Michele Wang
12-13	Convoy Loop by Jared Flood	26-27	Kildare Scarf by Michele Wang	40-43	Inversion Cardigan by Jared Flood	56-57	Yarns and Palette
14-16	Polar Hat by Michele Wang	28-29	Ravensfoot Hat by Leila Raabe	44-45	Sweetgrass Cowl by Leila Raabe	58-61	Pattern Catalog
17-19	Forester Pullover by Michele Wang	30-33	Barrington Vest by Jared Flood	46-47	Hege Mitts by Michele Wang	62-63	Credits





OSLO

Tubular scarf with buttons and colorwork detailing

Button closed for cowl fit (left)

Seed stitch trim & purled faux seam

Yarn: Loft in colors *Cast Iron, Sweatshirt, Nest, Long Johns, Fossil*

Design by Michele Wang



STASIS

Yoked pullover with stranded colorwork motifs

Seamless construction

Knit circularly from bottom up

Yarn: Loft in colors *Snowbound* & *Cast Iron*

Design by Leila Raabe







CONVOY

Textured infinity loop scarf

Triple-tuck stitch pattern creates highly textured and pillowy fabric

Completely reversible stitch pattern with built-in I-cord along side edges

Yarn: Loft held double, shown in a subtle marl of colors *Birdbook & Artifact*

Design by Jared Flood



POLAR

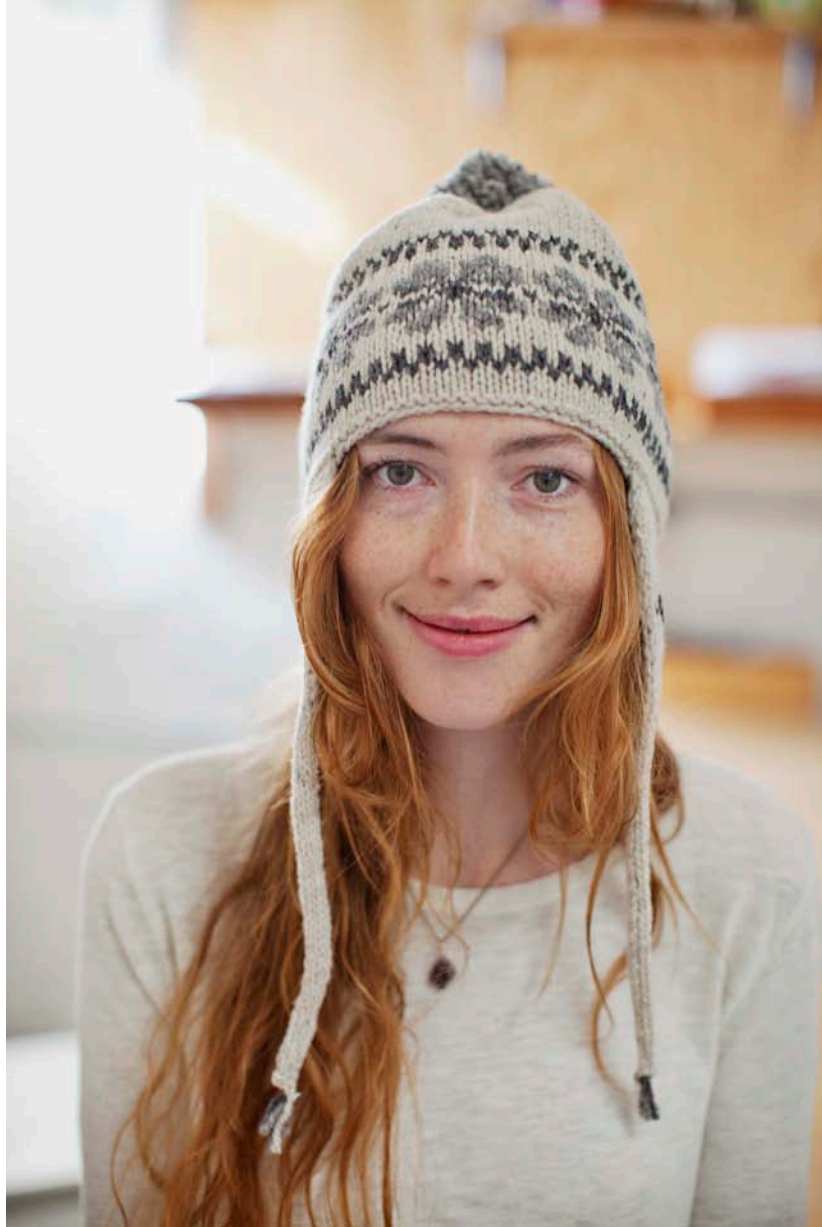
Colorwork cap with earflaps

Duplicate stitch detailing on flap

Optional pompom and fringe

Yarn: Shelter in colors *Fossil*, *Sweatshirt* & *Soot*

Design by Michele Wang





FORESTER

Marled everyday raglan pullover with turtleneck

Top-down construction. The ultimate comfort sweater

Chunky gauge for quick knitting

Yarn: Two strands of Shelter held double; Colors: *Fossil + Sweatshirt*

Design by Michele Wang





SEASONS HAT

Colorwork cap with ribbed brim

Fair Isle motifs in four different season-inspired colorways

Four hat sizes included, slouchy and beanie styles provided

Yarn: Loft in various colorways (5 colors per "season")

Design by Jared Flood



LIMITED EDITION KNITTING KITS AVAILABLE

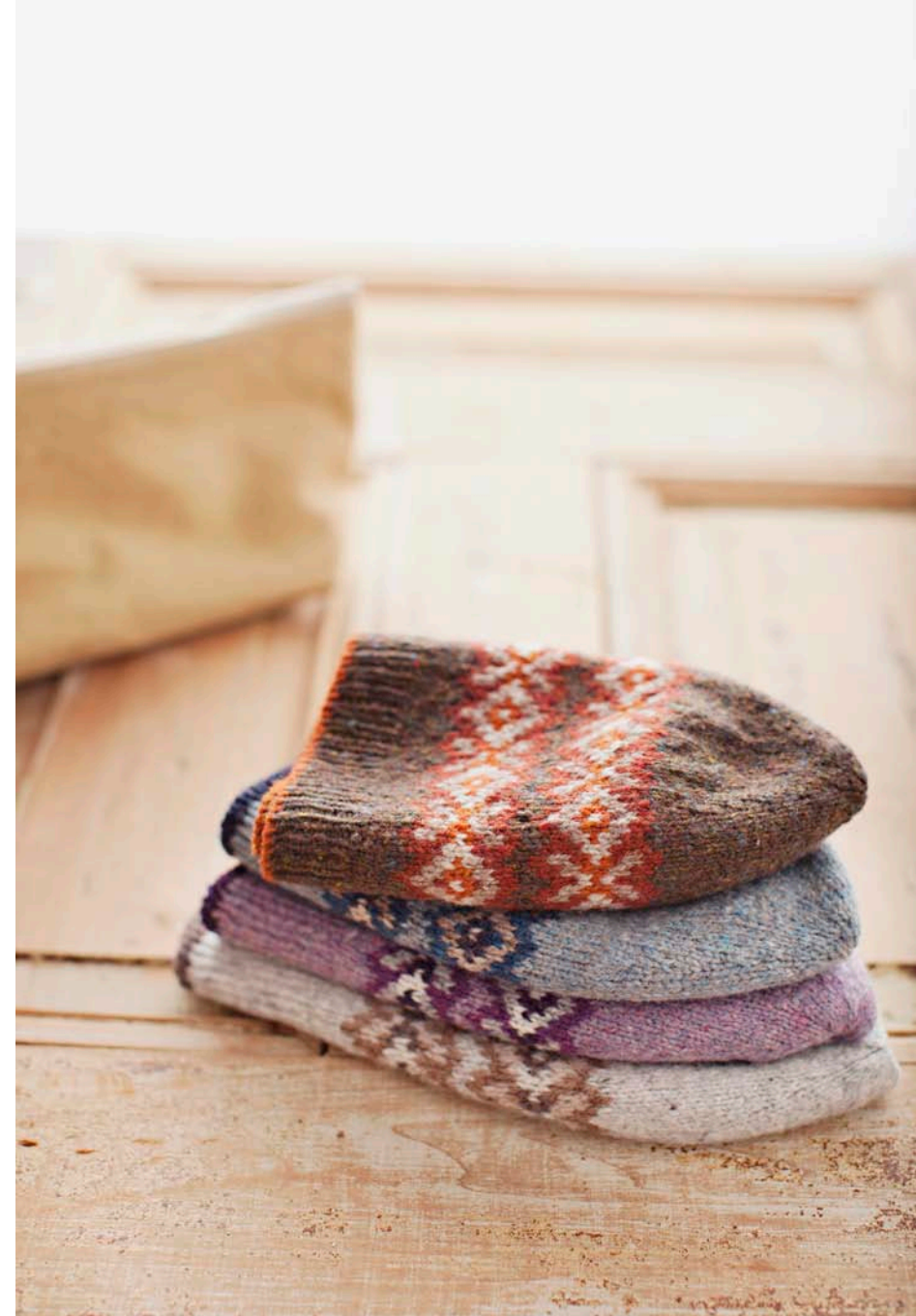
Try our specially packaged Seasons Hat kits!

Kits come in one of four colorways (see thumbnails at right) and are available in limited quantity

Each kit includes 5 hand-wound skeins of Loft yarn in amounts appropriate for knitting any of the four sizes of our Seasons Hat pattern; Kit also includes a printed and bound copy of the pattern

Materials come wrapped in our signature packaging and make wonderful gifts!

Click on either of the images above to purchase your kit online



AUTUMN



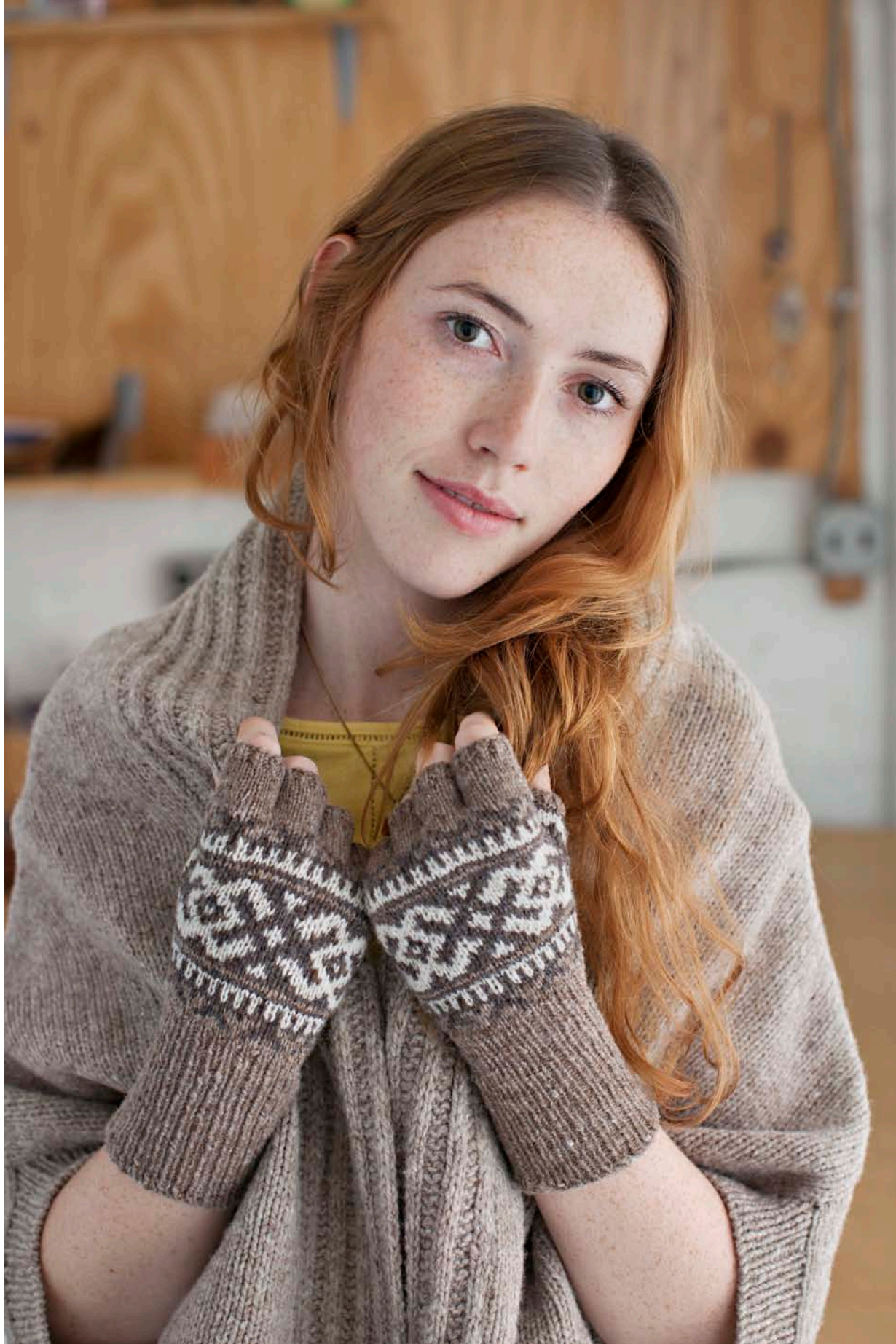
WINTER



SPRING



SUMMER



CHINOOK

Fingerless gloves with long ribbed cuff

Cowichan-inspired colorwork motifs

Shaped thumb gusset

Yarn: Loft in colors *Barn Owl*, *Truffle Hunt*, *Fossil*

Design by Jared Flood





KILDARE

Richly cabled scarf

Horizontally knit with wide rib trim

Traditional motifs include plaited, honeycomb & fishbone cables

Yarn: Loft held double in color *Fauna*

Design by Michele Wang



RAVENSFOOT HAT

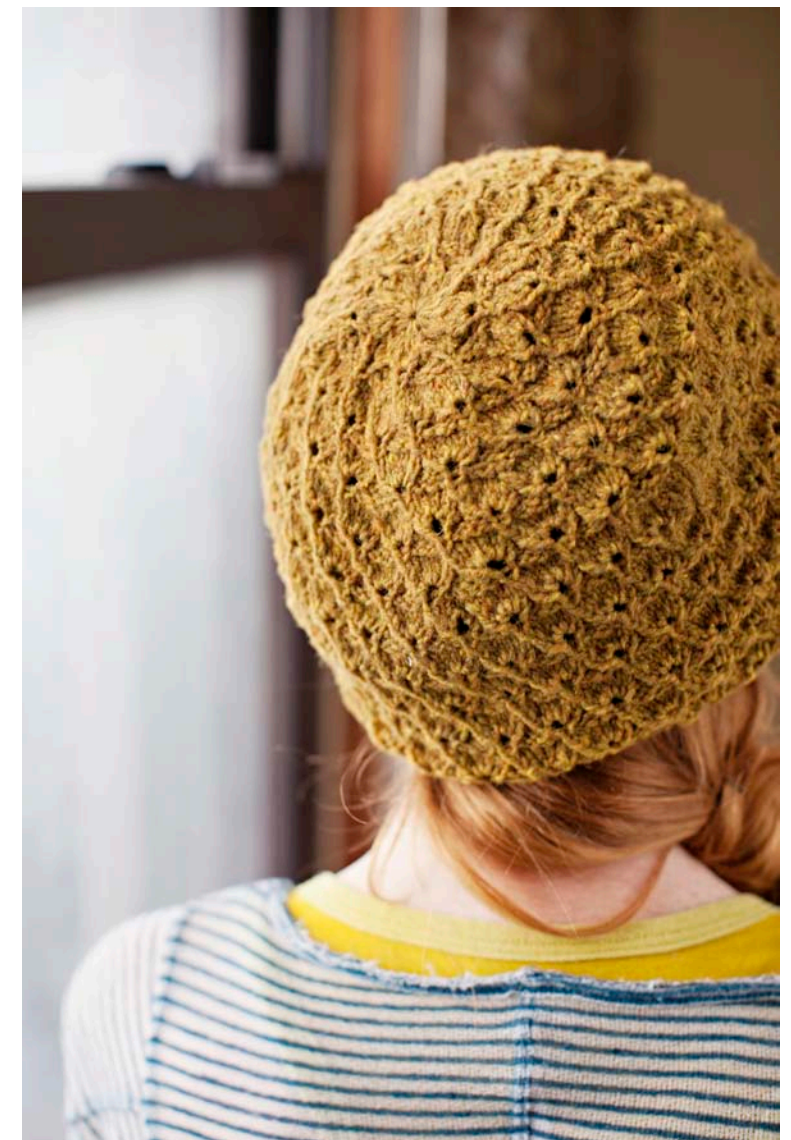
Slouchy hat with allover textured lace pattern

Integrated crown shaping

Brim features twisted cable motifs

Yarn: Loft in color *Hayloft*

Design by Leila Raabe







BARRINGTON VEST

Fitted colorwork vest

Traditional steeked construction

Low U-neck with hourglass waist

Yarn: Loft in colors *Artifact & Woodsmoke*

Design by Jared Flood



QUILL SHAWL

Shetland-inspired Traditional Hap Shawl

Two sizes and color versions included

Smaller shawl is knit in one color throughout

Larger shawl shown in traditional multi-color gradient pattern

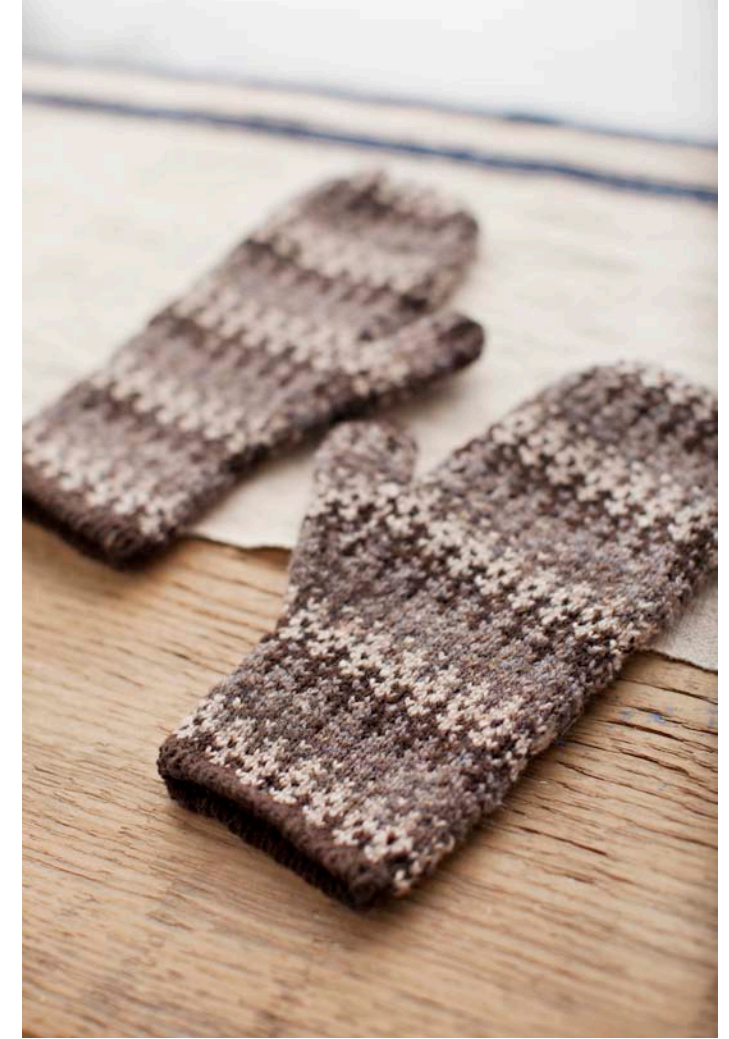
Yarn: BT Loft

Single-color (small) version shown in *Fossil*

Five-color (large) version shown in *Meteorite*, *Truffle Hunt*, *Stormcloud*, *Barn Owl* & *Fossil*

Design by Jared Flood





GLOAMING MITTENS

Multi-color stranded mittens

Side-gore thumb and ribbed trim

Yarn: Loft in 4 colors

(shown *Pumpnickel*, *Woodsmoke*, *Truffle Hunt*, *Stormcloud*)

Design by Leila Raabe





INVERSION CARDIGAN

Origami-inspired 2-way Cardigan

Wear rightside up or upside down

Slip-stitch garter-rib collar and hem

Yarn: Shelter in color *Woodsmoke*

Design by Jared Flood



SWEETGRASS

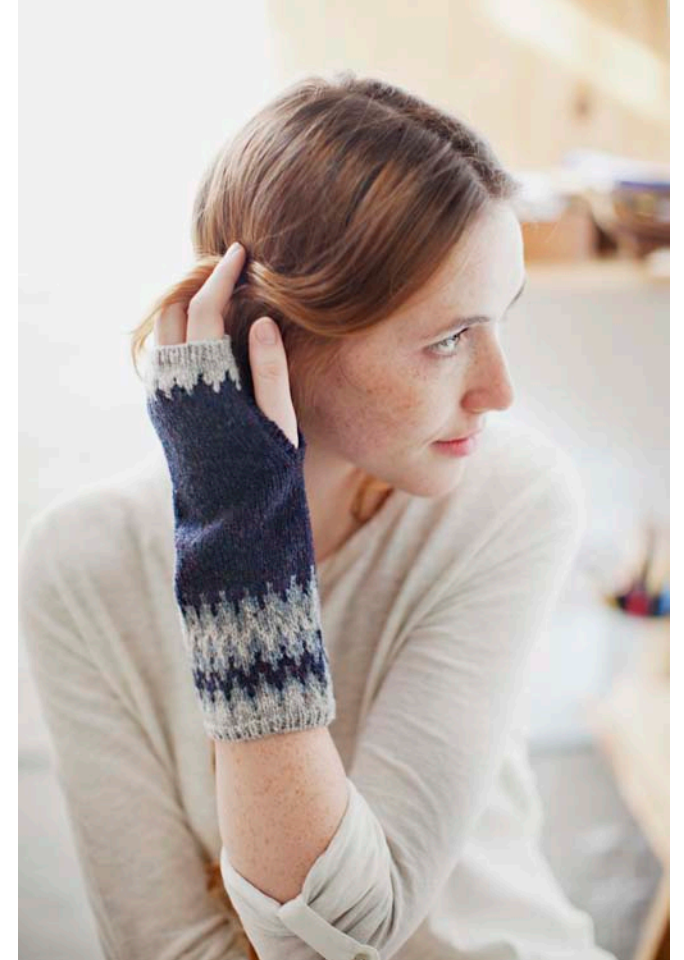
Lightweight textured cowl

Lace and cable lattice patterning

Ribbed trim

Yarn: Loft in color *Foothills*

Design by Leila Raabe



HEGE MITTS

Armwarmers with colorwork trim

Icelandic-inspired motifs

Trimmed thumbhole

Yarn: Loft in colors *Old World, Faded Quilt & Snowbound*

Design by Michele Wang



TALON THROW

Large blanket with allover ridge & cable texture

Two sizes provided: Large afghan & Lap Throw/Baby Blanket

Garter Stitch trim with built-in 2-stitch I-cord piping along sides

Yarn: Shelter in color *Nest*

Design by Jared Flood





EXETER CARDIGAN

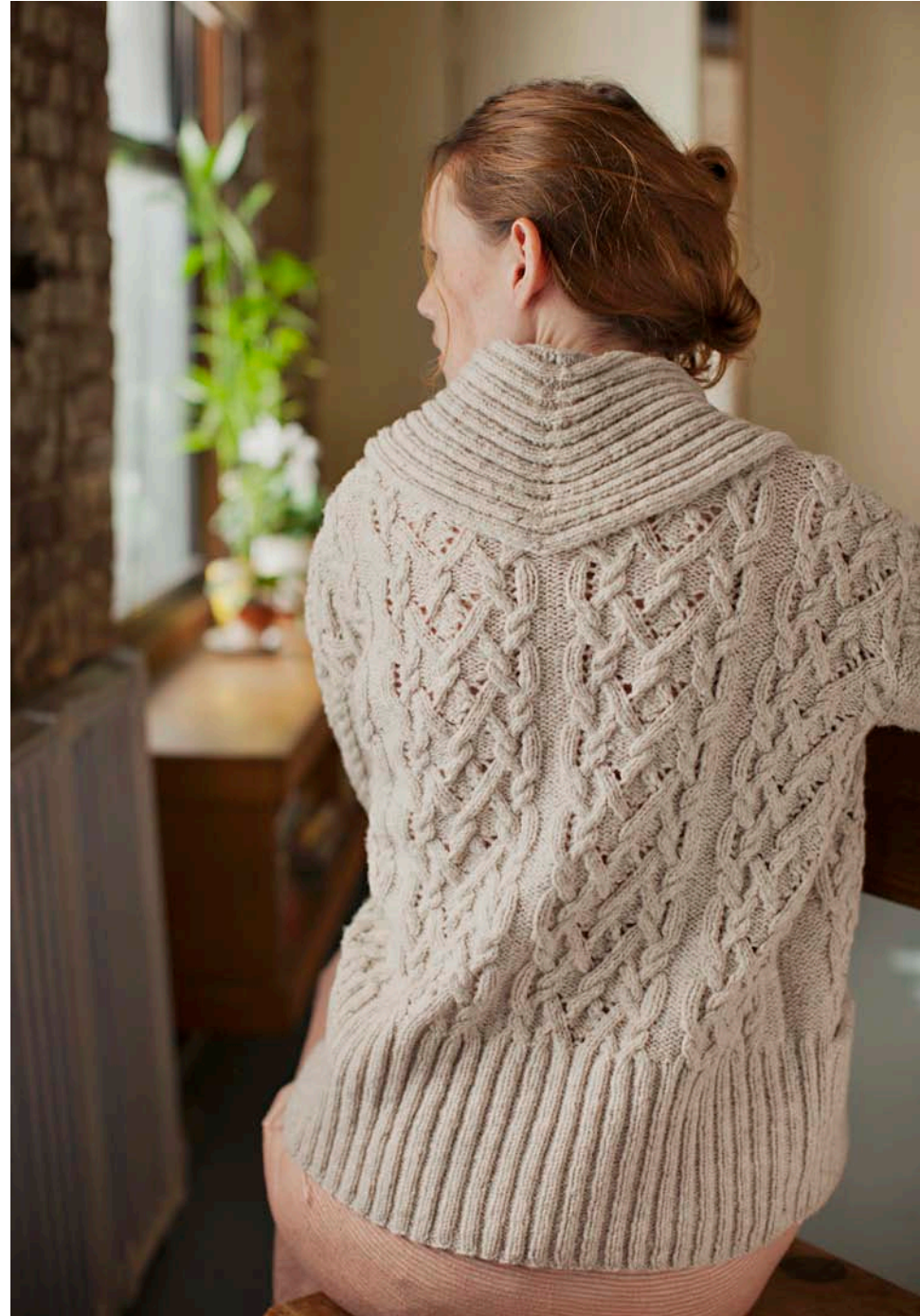
Double-breasted cabled cardigan with shawl collar

Cable & lace motifs with cozy ribbed details

Doubled cuffs and inset front pockets

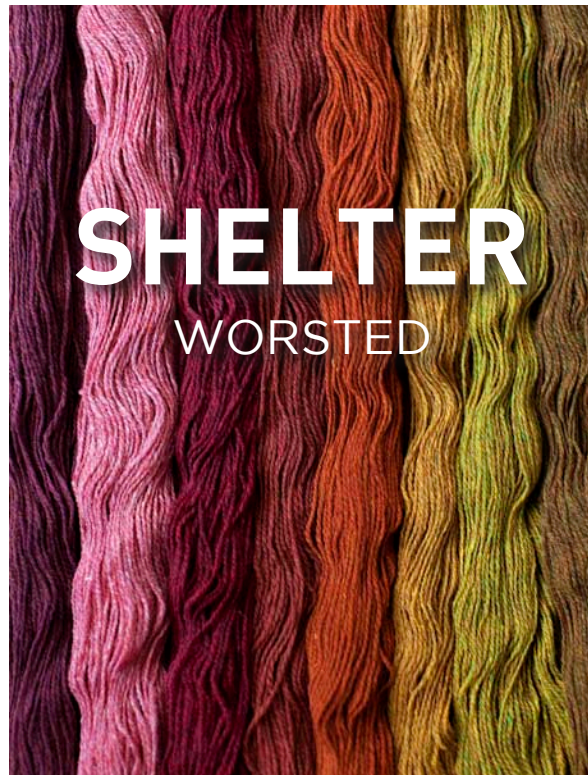
Yarn: Shelter in color *Fossil*

Design by Michele Wang



OUR YARNS

Grown in Johnson County Wyoming. Spun with care in historic Harrisville, New Hampshire.



SHELTER WORSTED



LOFT FINGERING

SHELTER

50 gram skein/140 yards
worsted weight (4-5 stitches per inch)
woolen 2-ply construction
\$12.50

17 colors available
click thumbnail to purchase

LOFT

50 gram skein/275 yards
fingering weight (6-8 stitches per inch)
woolen 2-ply construction
\$14.50

32 colors available
click thumbnail to purchase



CHOOSE YOUR COLOR

Our custom heathers are all created from 11 base solids, giving them a unique cross-range harmony.

- 1 Homemade Jam *
- 2 Long Johns *
- 3 Camper
- 4 Wool Socks *
- 5 Embers *
- 6 Hayloft *
- 7 Sap *
- 8 Fauna
- 9 Foothills
- 10 Tent *
- 11 Birdbook
- 12 Button Jar *
- 13 Artifact
- 14 Faded Quilt *
- 15 Stormcloud
- 16 Almanac *
- 17 Old World
- 18 Thistle *
- 19 Plume
- 20 Blanket Fort
- 21 Postcard
- 22 Fossil *
- 23 Woodsmoke *
- 24 Barn Owl
- 25 Nest *
- 26 Truffle Hunt
- 27 Meteorite
- 28 Pumpernickel *
- 29 Cast Iron
- 30 Soot *
- 31 Sweatshirt *
- 32 Snowbound

Colors marked with an asterisk (*) are available in both *Shelter* and *Loft*. Colors with no asterisk are only available in *Loft*.

CATALOG

Click on any image to purchase the knitting pattern online



OSLO

72" long, 14" around (7" width)
3 skeins MC + 4 accent colors
\$6.00 digital download



STASIS

35 (37, 38¾, 42½, 47, 50¾)" at bust
4 (4, 5, 5, 6, 6) skeins SC; 1 skein CC
\$6.50 digital download



CONVOY

8" wide x 74" long
4 skeins
\$6.00 digital download



CHINOOK

7¾" circumference, 7¾" long
1 skein in each of 3 colors
\$5.50 digital download



KILDARE

72" x 9" rectangle
5 skeins (yarn held double)
\$6.00 digital download



RAVENSFOOT

19½" brim circumference, 22½" at
widest point, 9¼" height
1 skein
\$6.00 digital download



POLAR

19½" circumference & 7¾" height
1 skein in each of 3 colors
\$6.00 digital download



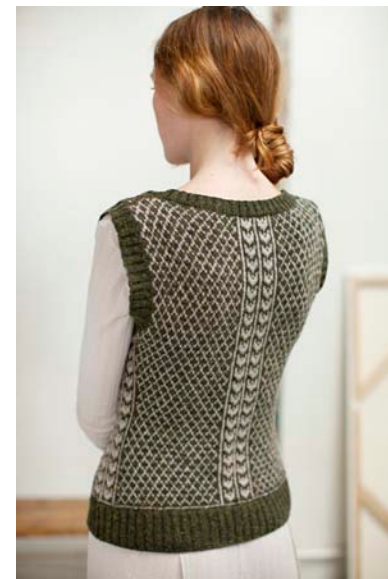
FORESTER

36¼ (39¼, 42¼, 45, 48, 51, 53¾,
56¾)" bust; 6 (7, 7, 8, 9, 9, 10, 10)
skeins each in two colors
\$6.50 digital download



SEASONS

Multiple sizes provided
Four colorways, each uses 1 MC and
4 CCs in varying amounts
\$6.50 digital download



BARRINGTON

34¼ (36½, 38¾, 41¼, 43½, 45¾, 48)"
at bust; 3 (3, 3, 3, 4, 4, 4) skeins BC &
2 skeins DC
\$6.50 digital download



QUILL

40" x 40" (50" x 50") square
Small Version: 4 skeins; Large
Version: 5 colors in varying amounts
\$6.50 digital download



GLOAMING

8" hand circumference, 11½" length
4 colors in varying amounts
\$5.50 digital download



INVERSION CARDIGAN

6 sizes; See product pages for measurement details
7 (8, 8, 9, 9, 10) skeins
\$6.50 digital download



SWEETGRASS

21" circumference; 10¼" length
2 skeins
\$5.50 digital download



HEGE

9" at forearm, 7" at palm, 9" long
1 skein in each of 3 colors
\$5.50 digital download



TALON

37 (47)" wide; 42 (73)" long;
10 (20) skeins
\$6.00 digital download



EXETER

37½ (41½, 45½, 49¾, 53¾, 58¼)"
garment at bust
12 (13, 15, 16, 18, 19) skeins
\$6.50 digital download



SEASONS KIT

Includes yarn and printed pattern
Delivered in BT signature packaging
\$40.00



CREDITS

A huge thanks to the skilled and supportive members of our production team – each of whom have contributed their talents to making this collection possible.

Knitwear Design Team

Jared Flood
Leila Raabe
Michele Wang

Technical Editing

Robin Melanson
Larisa Phipps
Mari Tobita

Copy Editing

Jared Flood
Leila Raabe

Sample Knitting

Melissa Carpenter
Jennifer Coard
Christine Craig
Jared Flood
Veronica Parsons
Larisa Phipps
Leila Raabe
Michele Saunders
Melissa Walters
Michele Wang

Photography & Graphic Design

Jared Flood

Production Manger & Styling

Karen Schaupeter

Model

Aine Vonnegut

Location

Kylin O'Brien





BROOKLYN TWEED

web: www.brooklyntweed.net email: info@brooklyntweed.net