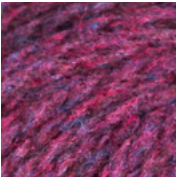


# LOFT

## *Color Stories*



**HOMEMADE JAM:** A syrup of mixed ripe berries. Cool red tempered with blues, purple, black and brown.



**VENEZIA:** Bright, burgundy wine, jammy purple-red.



**CAMPER:** Red dawn streaked with wisps of cloud. Soft red, heavily frosted with white and revealing hints of rust, purple, and gray.



**LONG JOHNS:** Woodsmen's flannel shirts. Shadowy crimson tinged with brown as well as black.



**WOOL SOCKS:** Peak autumn foliage. Red brown warmed by rust, camel, orange, and yellow.



**EMBERS:** Fox fur gilded by late sunlight. Rust burnished with red, brown, orange, and yellow.



**BALE:** Summer hay meadows. A gentle, pale, straw gold touched with brown and rust.



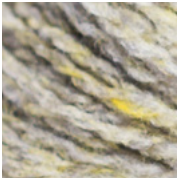
**HAYLOFT:** Harvest time amber gold. Yellow caramelized with brown and garnished with orange and olive.



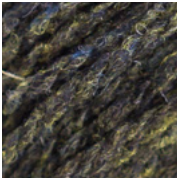
**SAP:** Green-gold tree frogs in full spring chorus. A base of yellow shot with olive, bright green, orange, and brown.



**YELLOWSTONE:** Warm moss agate, freshly collected from the river valley. A rustic blend of gold, rust, and umber.



**FOOTHILLS:** Prairie haze. Fields after the harvest. A mild sage green comprising white, gray, and yellow shaded with black.



**ARTIFACT:** Late summer in a conifer forest. Our darkest and earthiest green is a blend of black, yellow, olive, and brown, touched with white and navy.



**BIRDBOOK:** The world beneath the Amazon canopy. A smoky, lush mix of olive, black, and green shot with parrot streaks of yellow, red, and navy.



**FOREST FLOOR:** Old growth pine trees, cool hunter green.



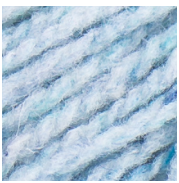
**BUTTON JAR:** Mallard's plumage, a playful but sophisticated teal of bright blue and green muddled with brown and black and then deepened with olive and yellow.



**TARTAN:** The green and blue of the banks and braes. A dashing peacock hue melding all our blues with teal and a shading of black.



**FADED QUILT:** Ruffles in the lake. A smoky, comforting blend of blues with white, brown, and gray.



**ICEBERG:** Glacial horizons on a clear summer day. A pale icy blue with flecks of aquamarine, turquoise, and cerulean, under-lit with creamy white.



**FLANNEL:** Work-worn denim. A mixture of blues distressed with white, black, and a touch of gray.



**ALMANAC:** Bluewater sailing. A seafarer's blend of three blues shaded with black and enlivened with a few frisking whitecaps.



**CADET:** Bright Mondrian, electric Admiral, true blue.



**OLD WORLD:** An Impressionist's starless night. A meld of black and navy grounded with a touch of gray and brown and shot through with bright blue and a frisson of red.



**PLUME:** Inky, regal purple. A symphony of black, purple, and navy with undertones of red.



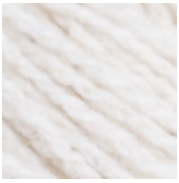
**BLANKET FORT:** Twilight on the porch swing. A cool lavender with hints of navy, purple, and red.



**POSTCARD:** The pearly first light of winter dawn. A gentle newsprint gray lit with flickers of red.



**PUFF (undyed):** Sun-warmed sourdough, creamy natural fleece.



**FOSSIL:** Warm sandstone, windswept dunes, a timeless pale neutral.



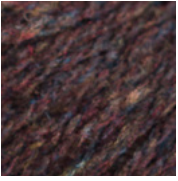
**WOODSMOKE:** Cool mornings, crackling leaves, smoky brown misted with white.



**NEST:** Rich bark-brown flecked with downy white.



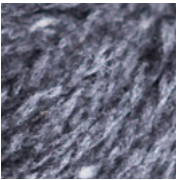
**TRUFFLE HUNT:** Sleek seals' fur reflecting the waves. A milky brown shaded with black and navy.



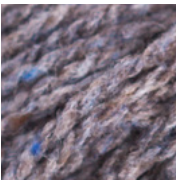
**METEORITE:** An unearthly metallic brown shaded with black and laced with primary blue, yellow, and red.



**CAST IRON:** Deepest black seasoned with a dash of luminous white.



**SOOT:** Cool, dusky gray, charcoal dusted with wood ash.



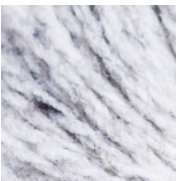
**STORMCLOUD:** The river at flood stage. A dusky blue-brown blend of gray, brown, and white with a peppering of navy.



**PUMICE:** Coastal cairns, foggy shorelines, frothy stone-gray flecked with black.



**SWEATSHIRT:** Cozy, comfortable mid-gray that goes with everything in your closet.



**SNOWBOUND:** The hush of gathering clouds, a crisp, wintry gray