



WOOL PEOPLE 11

lookbook





WOOL PEOPLE 11

lookbook

WWW.BROOKLYNTWEED.COM





WOOL PEOPLE

One Craft, Many Visions

Wool People was born of curiosity: what might independent handknitting designers create with Brooklyn Tweed's breed-specific wool yarns?

For this annual collaboration, designers from around the world present garments and accessories that reflect their individual aesthetic and align with BT's contemporary style. We curate work from budding talents as well as seasoned experts to form a cohesive collection, and the selected designs go through the same meticulous testing and editing as all BT pattern releases. We believe fair compensation is essential to sustain the creative energy that encourages great design; Wool People designers receive a generous share of the profits for the lifetime of their pattern.

The new edition of Wool People contains two fashion stories: a large array of versatile garments that make innovative use of line and texture, and a focused collection of exquisite lace stoles using Vale, our new Rambouillet laceweight.

Connecting with knitters and designers who share our deep passion for this craft is one of the great joys of our work. We hope you find the Wool People 11 collection as inspiring as we do.



STIPPLE & HATCH

Clean Lines and Subtle Textures



BOUNDARY PULLOVER

Arbor, 8–13 skeins

[Shop Pattern >](#)





BELL

Loft, 6–10 skeins

[Shop Pattern >](#)





AKIKO
Arbor, 11–17 skeins
[Shop Pattern >](#)





RIVET
Shelter, 12–19 skeins
[Shop Pattern >](#)







DIVIDE PULLOVER

Arbor, 9–16 skeins

[Shop Pattern >](#)





RONAN
Shelter, 12–17 skeins
[Shop Pattern >](#)





HARLOWE
Arbor, 10–14 skeins
[Shop Pattern >](#)





LEVEL
Loft, 4–5 skeins
[Shop Pattern >](#)





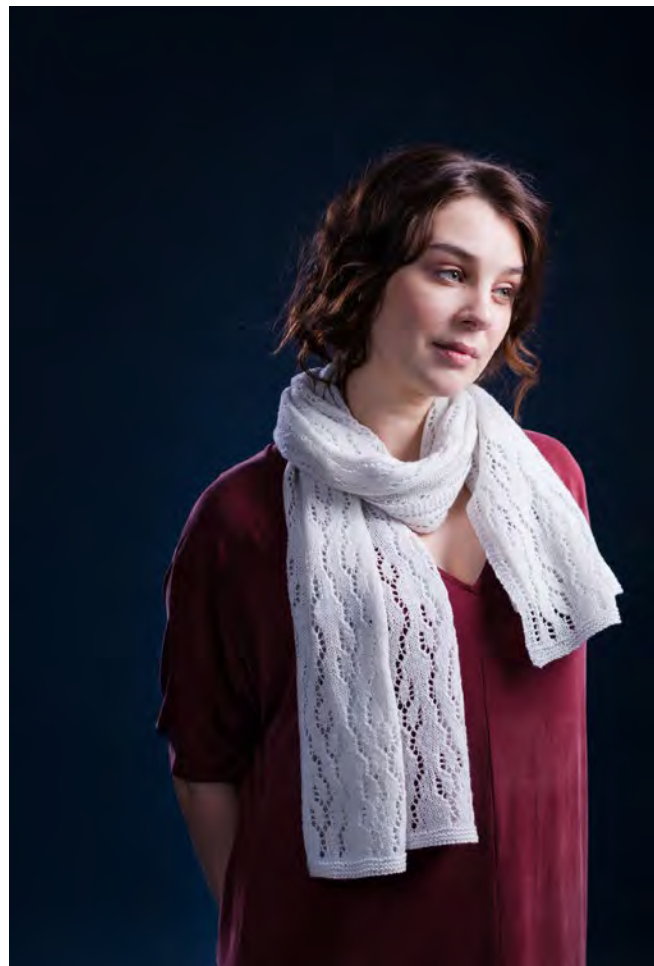
MOSSBANK
Shelter, 8–13 skeins
[Shop Pattern >](#)



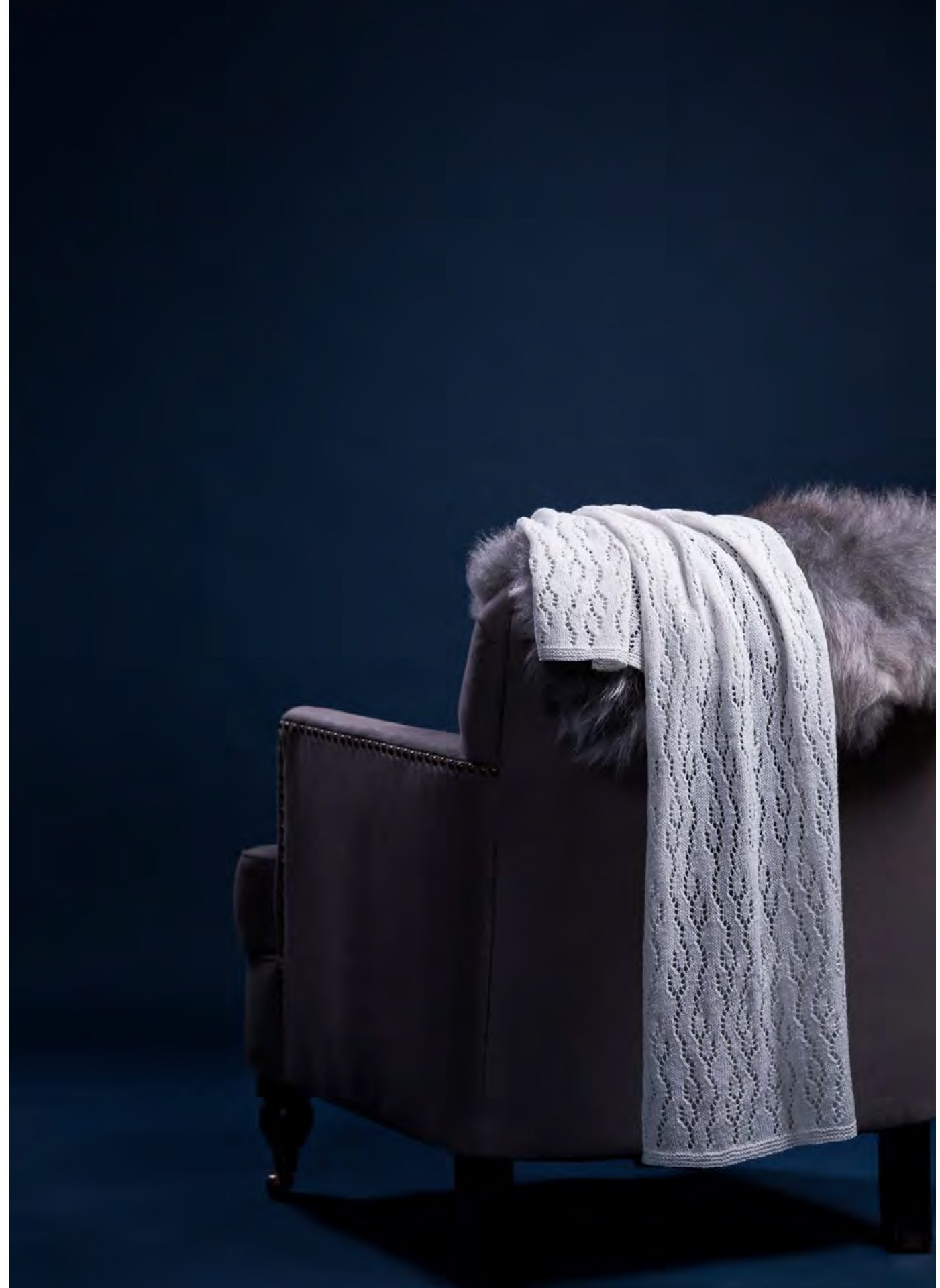


TRACERY

Elegant openwork in Brooklyn Tweed Vale



Ravine
Vale, 3 skeins
[Shop Pattern >](#)





Prism Stole

Vale, 3 skeins

[Shop Pattern >](#)



Prism Cowl

Vale, 2 skeins

[Shop Pattern >](#)



Leadlight
Vale, 3 skeins
[Shop Pattern >](#)





BOUNDARY PULLOVER

Olga Buraya-Kefelian

Olga has been knitting for many years. Her mother taught her to knit at a very young age, and she started designing in her late teens. Author of *Ori Ami Knits: Fiber Geometry*, she has also released designs in multiple publications and collaborations with yarn companies. She believes that each garment has its own story and purpose within the world of fashion. She fulfills her vision by gathering inspiration from industrial and architectural designs and combining them with her own interpretations of European and Japanese designs. Olga has contributed to many issues of Wool People and partnered with Brooklyn Tweed to create the first Capsule collection, a print series showcasing the work of a single designer. She lives near Washington, DC.



[SHOP PATTERN >](#)

[SHOP YARN >](#)





BELL

Ann McCauley

Ann grew up in rural Virginia and now makes her home outside of Boulder, Colorado. After enjoying a long performance career in modern dance, Ann found knitwear design as her next creative outlet. Author of *The Pleasures of Knitting: Timeless Feminine Sweaters* and *Together or Separate: Knitting the New Twinset*, Ann's designs also grace the covers of *60 Quick Luxury Knits* and *60 More Quick Baby Knits* from Sixth & Spring. She is a frequent contributor to Wool People.



[SHOP PATTERN >](#)

[SHOP YARN >](#)





AKIKO

Yoko Hatta

Yoko is a renowned Japanese knitwear designer, known for her label Kazekobo. She began her career designing boutique knitwear in Tokyo over 30 years ago. Soon after she began designing for handknitters and has been doing so ever since. She lives and works in Tokyo.



SHOP PATTERN >

SHOP YARN >





RIVET

Ann Klimpert

Ann's industrial design background inspires the clean lines, simple shapes, and wearability of her knitwear. Her former life as a toy inventor adds a sense of whimsy and a passion for flea market treasures and vintage finds brings a bit of the past to her designs. Her work has been featured in KnitScene and Noro Knitting Magazine. Rivet is her first design for Wool People. Ann lives, knits, and designs in Rhode Island.

[SHOP PATTERN >](#)[SHOP YARN >](#)



DIVIDE PULLOVER

Emily Greene

Emily is a Brooklyn-based designer of knitwear and buildings. Her graphic handknit designs are heavily influenced by her architectural background and by her broader studies of shape, pattern, and surface design. Emily approaches knitting as a drawing medium, and her modern knitwear designs are as enjoyable to wear as they are to knit. Divide is her first contribution to Wool People.



SHOP PATTERN >

SHOP YARN >





RONAN

Andrea Mowry

Andrea lives and designs knitwear in Michigan. After leaving her life as a pastry chef to start a family with her husband, her hands found the necessary freedom to begin creating with fiber instead of flour. She focuses on designing knits to fit the modern wardrobe — pieces that are fun to knit and easy to wear. She believes in enjoying every stitch and wearing at least one handknit everyday. Andrea loves to explore new techniques and skills and share them with other knitters through her patterns and workshops. Her goal is to leave knitters feeling empowered, inspired, and wrapped up in their own beautiful knits. Ronan is her first contribution to Wool People.



SHOP PATTERN >

SHOP YARN >





HARLOWE

Melissa Wehrle

Melissa Wehrle is a graduate of the Fashion Institute of Technology and works as a technical designer for a knitwear company on Seventh Avenue. In her spare time, she designs handknit patterns that have been featured in Knitscene, Twist Collective, Interweave Knits, and several books, as well as in previous Wool People collections. Her first book, *Metropolitan Knits*, was published by Interweave Press in 2013. Melissa lives in Astoria, New York with her husband, too much yarn, and a growing fabric stash.



SHOP PATTERN >

SHOP YARN >





MOSSBANK

Kerry Robb

A former graphic designer and native Californian, Kerry taught herself to knit in 2014, and a love affair was quickly born. Her design sense is informed by her love of art, nature, and architecture. Kerry’s focus is on simple, wearable pieces with attention to detail and structure. Mossbank is her second design for Wool People.



SHOP PATTERN >

SHOP YARN >





LEVEL

Nancy Whitman

Nancy learned to knit at the age of eight, and that was the start of a lifelong love for the craft. She prefers to design accessories with modular construction. Inspiration often comes from other creative expressions such as fabric patterns, paintings, stained glass, quilting, and architecture. She has published designs in Twist Collective as well as releasing independent work. Level is Nancy's first contribution to Wool People.



SHOP PATTERN >

SHOP YARN >





PRISM

Natalie Servant

Natalie tests software and knits compulsively in Ottawa, where she finds much of her design inspiration in architecture and art. She started by designing lace and is still in love with it. Natalie’s work has been featured in several magazines, collections, and books, and she self-published a book of patterns inspired by Canadian Art Deco buildings. Prism is her first design for Wool People.



SHOP PATTERN >

SHOP YARN >





RAVINE

Sandhya Shadangi

Sandhya lives in Sunnyvale, California, and has been knitting since 2011. She likes to experiment with simple lace stitches and has a special affinity for geometric motifs. Her non-knitting creative life includes a lot of drawing and doodling, with occasional attempts at photography. Ravine is Sandhya’s first design for Wool People.



SHOP PATTERN >

SHOP YARN >





LEADLIGHT

Amy van de Laar

Amy is a knitting designer and singer living in Melbourne, Australia. She made the move from New Zealand nearly three years ago, and is still rebuilding her yarn stash. Amy designs under the name Baroque Purls, a fusion of her twin passions for music and knitting. Her accessory designs spring from a love of texture and color, and take inspiration from nature, art, and pop culture. She has always been surrounded by creative people, and can't imagine life without a project on the go. Leadlight is her third design for Wool People.



SHOP PATTERN >

SHOP YARN >





YARN

*Our breed-specific wool yarns are
developed, sourced, scoured, dyed,
and spun in the USA.*

SHOP YARN >





#BrooklynTweed



Facebook



Instagram



Pinterest



Ravelry



Twitter



THANK YOU

Brooklyn Tweed is committed to domestic textile production and transparency, from sheep to skein. We thank you for supporting independent design and American-made yarns.

WWW.BROOKLYNTWEED.COM