

RANCH 02: FORBES

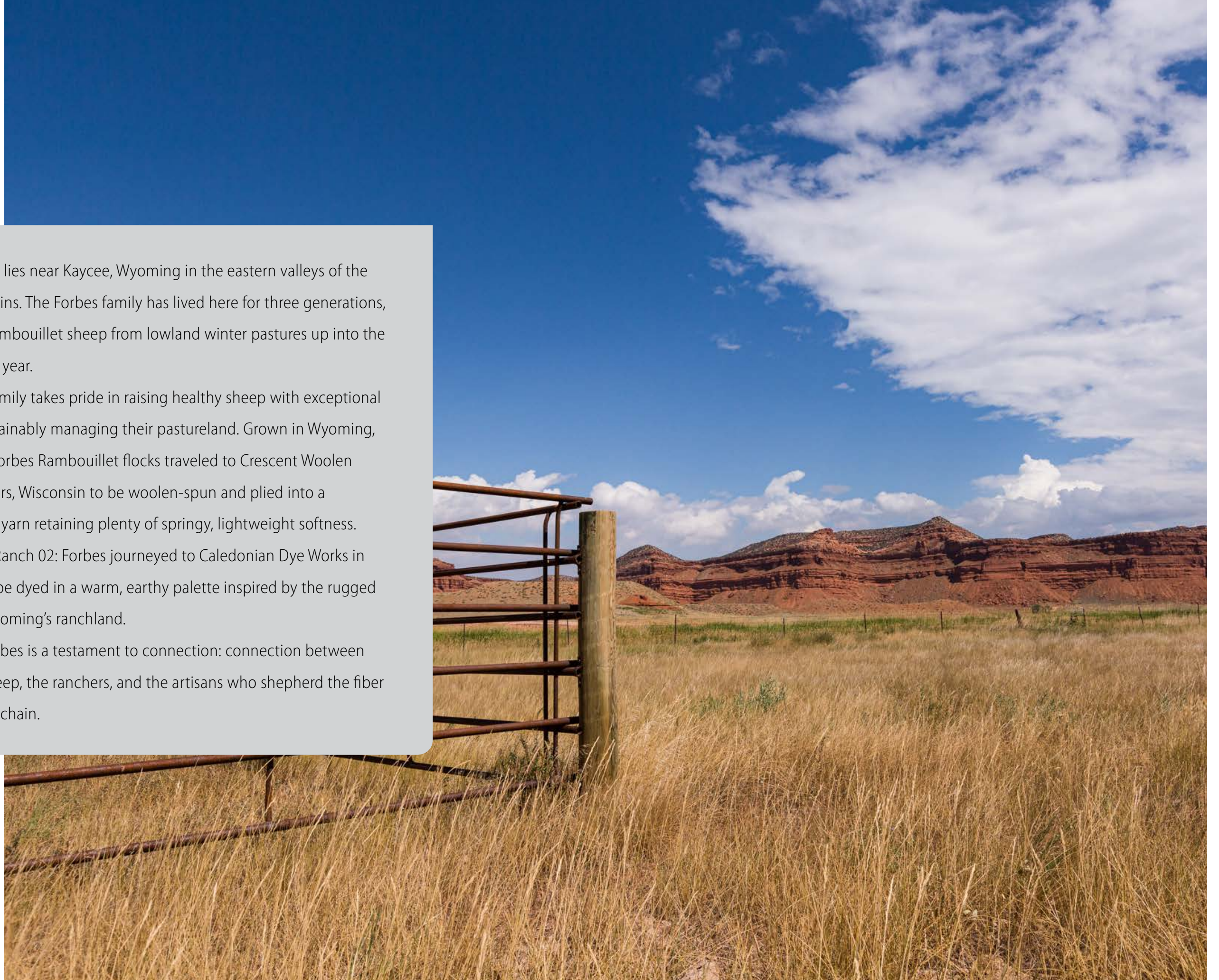
AMERICAN RAMBOUILLET WOOL • *Forbes Ranch* | *Kaycee, WY* • WORSTED WEIGHT



Forbes Ranch lies near Kaycee, Wyoming in the eastern valleys of the Bighorn Mountains. The Forbes family has lived here for three generations, herding their Rambouillet sheep from lowland winter pastures up into the mountains each year.

The Forbes family takes pride in raising healthy sheep with exceptional wool, while sustainably managing their pastureland. Grown in Wyoming, wool from the Forbes Rambouillet flocks traveled to Crescent Woolen Mills in Two Rivers, Wisconsin to be woolen-spun and plied into a worsted-weight yarn retaining plenty of springy, lightweight softness. After spinning, Ranch 02: Forbes journeyed to Caledonian Dye Works in Philadelphia to be dyed in a warm, earthy palette inspired by the rugged landscape of Wyoming's ranchland.

Ranch 02: Forbes is a testament to connection: connection between the land, the sheep, the ranchers, and the artisans who shepherd the fiber along its supply chain.



up and up to summer pastures, to mountain-fresh water

and green meadow grasses



POWDER RIVER



SALT SAGE



BURDOCK



TOBACCO



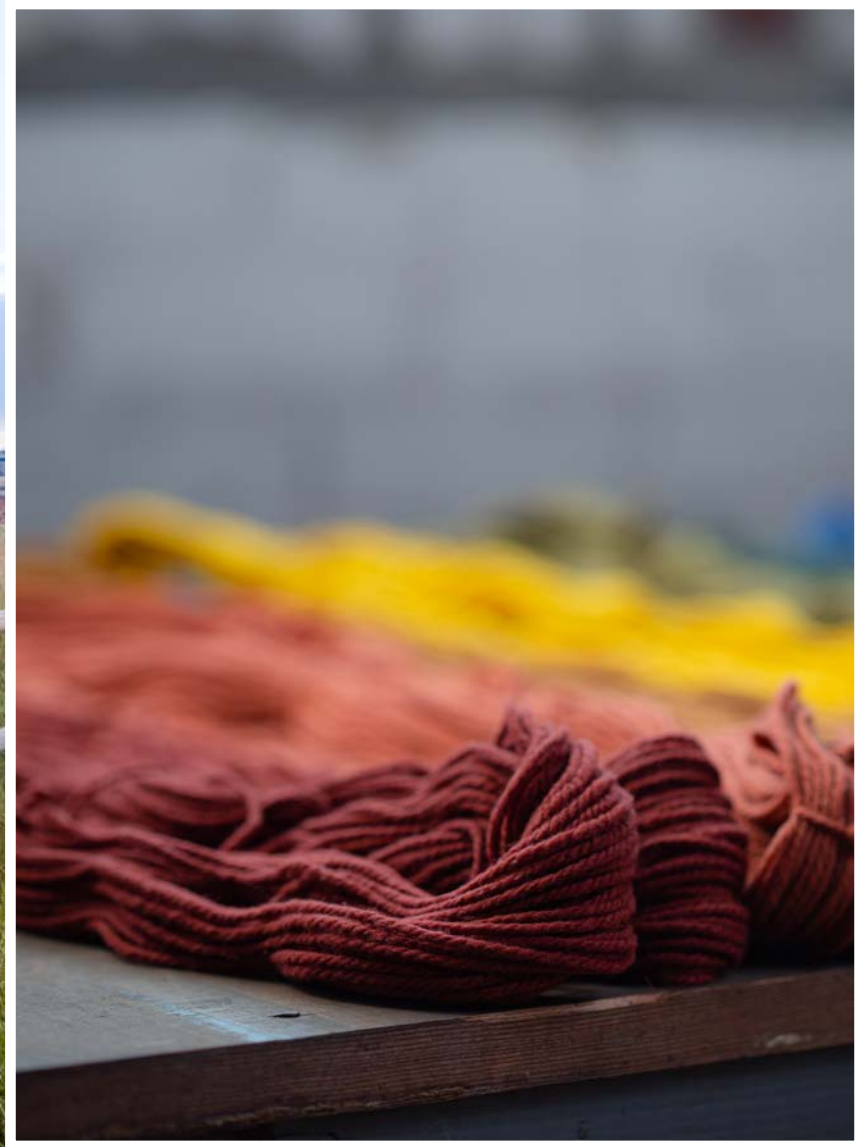
FORBES PULLOVER

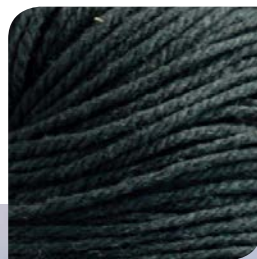
Jared Flood

10-19 skeins

Photographed in *Natural*







LODGEPOLE PINE



AGATE



ESCARPMENT



CURLY CUP



a breeze meanders its way around and over the bluffs,

rustling the sunwarmed petals of wildflowers as it goes





TILLAGE HAT

Jared Flood

2 skeins

Photographed in *Natural*

this is a place of connection,

where we honor and sustain a passion for wool



SALT SAGE



RED WALL



NATURAL



TOBACCO





TILLAGE HAT



FORBES PULLOVER

FORBES

Pullover with Textured Yoke

by Jared Flood

Yarn: *Ranch 02: Forbes*

Skeins Needed: 10-19

Pattern Type: Pullover

Sizes Included: 35 (39, 43, 47, 51, 55, 59, 63)"

[89 (99, 109, 119.5, 129.5, 139.5, 150, 160) cm]

circumference at bust

Skill Level: Intermediate

Sample Color: *Natural*

Sample Size: 43" [109 cm] with 9½" [24 cm] ease
on model



TILLAGE HAT

Textured Beanie with Cables

by Jared Flood

Yarn: *Ranch 02: Forbes*

Skeins Needed: 2

Pattern Type: Hat

Skill Level: Intermediate

Sample Color: *Natural*

Sample Dimensions: 18½" [47 cm] circumference;
8" [20.5 cm] length



RED WALL



ESCARPMENT



TOBACCO



CURLY CUP



BURDOCK



LODGEPOLE PINE



POWDER RIVER



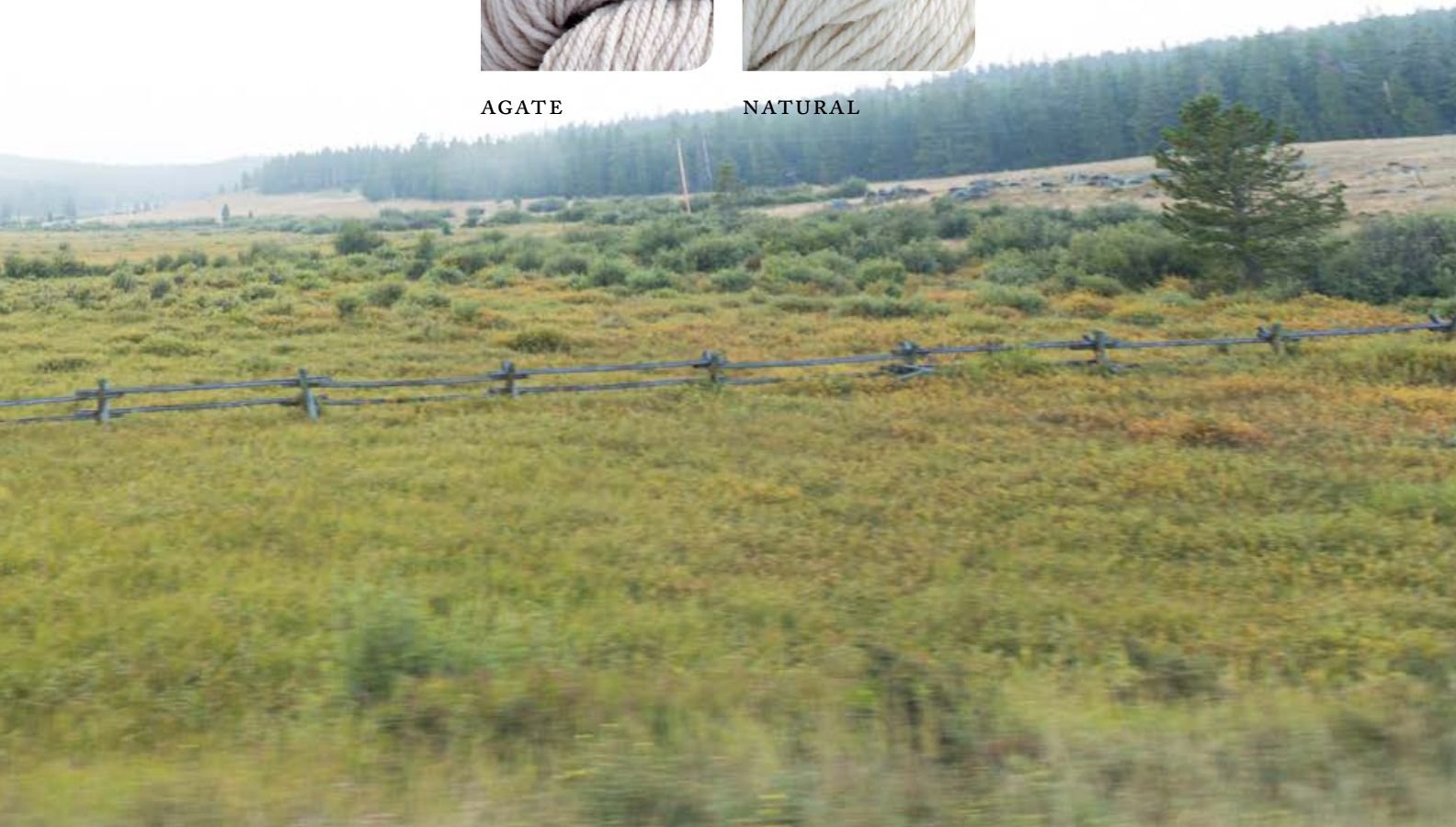
SALT SAGE



AGATE



NATURAL



PRODUCTION TEAM

Creative Direction & Photography

Jared Flood

Project Coordination

Jen Hurley + Lis Smith

Pattern Writing & Senior Technical Editing

Therese Chynoweth + Sue McCain

Technical Editing

Andrea Lum + Sue McCain

Pattern Proofing

Allison Ause, Jen Hurley + Lis Smith

Copywriting

Jamie MacCarthy + Huelo Dunn-Estébanez

Sample Knitting

Allison Ause + Lis Smith

Knitwear Coordination & Styling

Lis Smith

Hair & Makeup

Kristen Arnett

Model

Oriana L.K.

Pattern Layout & Graphic Design

Caitlin Lomen

Shot on location at The Croft, Sauvie Island, Portland, OR

and Forbes Ranch, Kaycee, WY

Special Thanks to Vail and Greg

KEEP IN TOUCH



Facebook



Instagram



Pinterest



Ravelry



Twitter

#BROOKLYNTWEED



WWW.BROOKLYNTWEED.COM