



CAPSULE



OLGA BURAYA-KEFELIAN

for

BROOKLYN TWEED

lookbook





CAPSULE

|

OLGA BURAYA-KEFELIAN

for

BROOKLYN TWEED

lookbook

CONTENTS

4
INTRO

8
COLLECTION

44
INFO

86
END NOTES

table of contents 4

outpost 7

ebb dress 10

naos hat 14

cusp poncho 18

jujika cowl 22

nobu pullover 26

tatara armwarmers 30

apex cardigan 34

tetrapods shawl 38

book information 44

collection overview 46

pattern notes 52

our yarns 70

palette 84

credits 86

about the designer 87

keep in touch 88



OUTPOST

One of my favorite things about the work we do at Brooklyn Tweed is the opportunity to team up with some of the knitting industry's most exciting talents. I'm a staunch believer in collaboration as fuel for the creative process — developing ideas with others helps keep our minds fluid and open to new influences throughout the vulnerable process of creation.



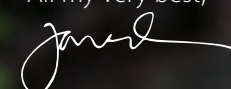
This fall, we're excited to announce the launch of a new design series from Brooklyn Tweed called *CAPSULE* that gives us a chance to work closely with a single designer to craft a collection of work driven by that individual's unique vision. This series also represents our first foray into the land of print — a request that we hear regularly from our customers and fans. *CAPSULE* provides us with the opportunity to produce a beautifully printed booklet of pattern designs while still maintaining the fair, commission-based compensation model for our designers that we are committed to in all the work that we produce, be it digital or on paper.

To kick off this new publication format, I asked my dear friend and colleague, the immensely talented Olga Buraya-Kefelian, to be the first to present her work in this way. Olga is known and loved for her playful and sophisticated exploration of shape and form. Her work spans a broad spectrum from conceptual works of art to smart, wearable pieces of unique knitwear for everyday use.

Inspired by architecture, fashion, and street style, we thought a photoshoot in the Cobble Hill neighborhood of Brooklyn would be the perfect setting to photograph the work Olga designed for our woolen-spun yarns Shelter and Loft.

Working side by side with Olga to bring this collection to life has been a rewarding process for both of us — I hope you'll enjoy getting a peek inside the creative mind of this truly gifted designer.

All my very best,



Jared Flood



COLLECTION



EBB

DRESS



Ebb is a flirty throwback to the Sixties mini dress, with a marled gradient created by holding two strands of Loft in different colors together and changing one color at a time. It's styled here with the purl side out, but careful finishing will make this seamless garment completely reversible. Slim-fitting Ebb is worked top-down with short rows to shape the neckline and sleeve caps worked contiguously with the body. Clean, rolled edges keep the focus on the ombré fabric, and small pockets add the perfect practical detail to this simple shape.





NAOS

HAT



This close-fitting beanie is distinguished by organic cabled forms that flow and interlock in unexpected ways. Ring motifs are created by abrupt increases and decreases. Worked at a snug gauge in Shelter, Naos makes a very warm and eye-catching winter accessory. The pattern is both charted and written, so you can follow the directions according to your preference.





CUSP

PONCHO



A hexagonal bubble popover, Cusp is cozy and easy to wear as well as boldly stylish. Knit in Shelter, this playful garment is worked from the center out, with spines of delicate cables delineating each segment and forming a criss-cross that makes for a surprisingly flattering fit. When the back and front are complete, the live stitches are united from the wrong side using the Joinery bind-off. The sleeve openings, collar, and hem are edged in double rib. The sample is shown in a tinted neutral — Postcard — but Cusp would be elegant at the ends of the spectrum in Cast Iron or Fossil, too.





JUJIKA

COWL



A puzzle of interlocking crosses makes for simple but engaging colorwork in this double-sided cowl. Jujika is knit width-wise in the round from a provisional cast-on, then folded and joined into a tube. The pattern offers a choice between Joinery bind-off for a quick finish or grafting in the two-color pattern for seamless perfection. The samples use strong contrast to show the tessellating crosses to full effect, but this motif is bold enough to support the use of more closely related colors, too. Wrap Jujika twice around your neck for impenetrable warmth or wear it as a long loop for a graphic accessory.





NOBU

PULLOVER



A dramatic peplum creates a memorable silhouette and a very engaging knit. Nobu is a study in texture as well as form. A dense lattice of small cables on the back and sleeves creates flattering diagonal lines and lends the necessary structure to support the peplum's flare, while the front is embellished with OXO motifs flanking a panel that looks like rings of chainmail. The tailored shapes are worked flat from the bottom up and sewn together. Because the cabled fabric in Shelter is quite dense, allow yourself 2–4" of ease to achieve a fit that's svelte but not restrictive.





TATARA

ARMWARMERS



The surprising curved form of these armwarmers translates into artful scrunch that keeps your wrists toasty and adds a futuristic note to your wardrobe. Use a single skein of Loft to make a pair in the shorter length (shown in Fauna) or two skeins for the longer option (shown in Snowbound). The pattern is worked circularly from the palm to the forearm and makes an entertaining knit as the curved shape emerges.





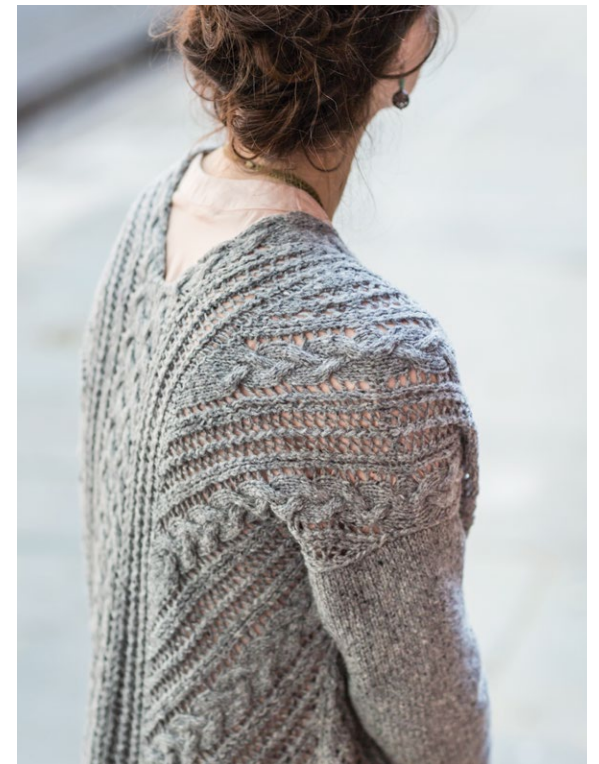
APEX

CARDIGAN



This open cardigan in braided cables and airy lace makes use of bias fabric to create unexpected angles and intersections at every turn — an alluring split at the nape of the neck, a mitered hem with a flattering line of chevrons at the sides. The back and fronts are worked flat from large charts; the stockinette sleeves are also worked flat and sewn on. Deep pockets warm your hands and hold your treasures. Apex is the kind of garment you can throw on to pull any outfit together, so choose a color from the Shelter palette that coordinates with your wardrobe staples.





TETRAPODS

SCARF/SHAWL



This tessellating motif is true knitted lace: the striking geometric pattern is worked on right-side and wrong-side rows. Knit in Loft, this shawl is light as sea foam. Directions are given in both charted and written form for three widths, from a scarf to a large shawl. All versions measure six feet in length, so you can easily wrap your Tetrapods about your neck and shoulders or leave the ends loose for an elegant drape.







NOW AVAILABLE IN PRINT

OLGA BURAYA-KEFELIAN FOR BROOKLYN TWEED



Each volume in our new CAPSULE series will be available for purchase as a beautiful, bound book. We've spent time and care in bringing our first printed publication into the world and we are so excited to share it with you.

An FSC-certified publication, this book is printed in the USA at a press that is powered by 100% renewable energy.

Click the link below to purchase this collection as a 128-page softcover book that includes the photographic content you see in this lookbook as well as complete patterns and special techniques for knitting all eight of Olga's designs.

As with all Brooklyn Tweed designs, CAPSULE patterns can be purchased individually for download on our website or on Ravelry.



PURCHASE BOOK





COLLECTION

OVERVIEW



EBB

Top-Down Ombré Dress



YARN Loft (held double)
COLORS Pumpernickel, Truffle Hunt, Stormcloud, Nest, Barn Owl, Woodsmoke, Fossil
INFO Page 54



SHOP PATTERN



NAOS

Interlocking Cable Hat



YARN Shelter
COLOR Sap
INFO Page 56



SHOP PATTERN



CUSP

Geometric Cabled Poncho



YARN Shelter
COLOR Postcard
INFO Page 58



SHOP PATTERN



JUJIKA

Swiss Cross Colorwork Cowl



YARN Loft
COLORS Hayloft + Snowbound, Sweatshirt + Fossil
INFO Page 60



SHOP PATTERN



NOBU

Cabled Pullover with Peplum



YARN Shelter
COLORS Wool Socks
INFO Page 62



SHOP PATTERN



TATARA

Curved Armwarmers



YARN Loft
COLORS Snowbound (Large);
Fauna (Small)
INFO Page 64



SHOP PATTERN



APEX

Diagonal Cable & Lace Cardigan



YARN Shelter
COLORS Sweatshirt
INFO Page 66



SHOP PATTERN



TETRAPODS

Geometric Lace Shawl & Scarf



YARN Loft
COLORS Almanac (Shawl);
Cast Iron (Scarf)
INFO Page 68



SHOP PATTERN

Pattern
NOTES



EBB

Top-Down Ombré Dress



FINISHED DIMENSIONS

32 (36¼, 40½, 43¾, 48, 52¼)"

Intended ease: +2–3"

Sample shown is size 36¼" with +1¼" ease on model

GAUGE

19 stitches & 31 rounds = 4" in stockinette stitch with yarn held double, with Size 4½ mm (US 7) needle(s), after blocking

YARN

Loft in colors Pumpernickel (C1), Truffle Hunt (C2), Stormcloud (C3), Nest (C4), Barn Owl (C5), Woodsmoke (C6), and Fossil (C7).

DESIGN HIGHLIGHTS

- worked with two strands of *Loft* held together
- reversible
- top-down construction with short-row neckline shaping
- color blocking scheme can be reversed to visually balance the figure

PDF

SHOP PATTERN



NAOS

Interlocking Cable Hat

FINISHED DIMENSIONS

20¾ (21½)" circumference at brim; 20½" circumference at main section; 8¼ (9)" height
Sample shown is size small/medium

GAUGE

24 stitches & 32 rounds = 4" in Cable Pattern with Size 4 mm (US 6) needle(s), after blocking

YARN

Shelter in color Sap

DESIGN HIGHLIGHTS

- close-fitting cabled beanie
- pattern can be worked from charts or written instructions



SHOP PATTERN



CUSP

Geometric Cabled Poncho

FINISHED DIMENSIONS

30 (30½, 31, 31½, 33½)" diameter at bust
Intended to fit bust sizes 34 (36, 38, 40, 42–44)"

Sample shown is size 30½" on model with 35" bust

GAUGE

20 stitches & 32 rounds = 4" in reverse stockinette with Size 4½ mm (US 7) needle(s), after blocking

YARN

Shelter in color Postcard

DESIGN HIGHLIGHTS

- hexagonal bubble popover
- worked in two pieces from the centers out
- live stitches for front and back are united with Joinery bind-off
- cabled motifs worked from charted instructions



SHOP PATTERN



JUJIKA

Swiss Cross Colorwork Cowl



FINISHED DIMENSIONS

6¾" height; 51½" circumference

GAUGE

21 stitches & 36 rounds = 4" in 2-color pattern
from Jujika Chart with Size 3¼ mm (US 3)
needle(s), after blocking

YARN

Loft in colors Hayloft and Snowbound (upper),
and Sweatshirt and Fossil (lower)

DESIGN HIGHLIGHTS

- double-sided colorwork cowl
- knit width-wise in the round from a provisional cast-on
- choose between Joinery bind-off or two-color grafting to complete the tube
- tessellating cross motif is worked from charts



SHOP PATTERN



NOBU

Cabled Pullover with Peplum

FINISHED DIMENSIONS

37 (39, 41, 43, 45, 47, 49)" circumference at bust

Intended ease: +2–4"

Sample shown is size 37" with +2" ease on model

GAUGE

24 stitches & 28 rows = 4" in Left- or Right-
Slanting Lattice Chart pattern with Size 4½ mm
(US 7) needle(s), after blocking

YARN

Shelter in color Wool Socks

DESIGN HIGHLIGHTS

- exaggerated peplum worked flat from the bottom up
- densely cabled fabric
- worked from charted instructions
- tailored fit



SHOP PATTERN



TATARA

Curved Armwarmers



FINISHED DIMENSIONS

8¼" circumference at palm; 8½ (9¼)" circumference at forearm; 10¼ (14¾)" long (measured along shorter side)

GAUGE

22 stitches & 38 rounds = 4" in stockinette stitch with Size 2¼ mm (US 2) needle(s), after blocking

YARN

Loft in colors Fauna (short version) and Snowbound (long version)

DESIGN HIGHLIGHTS

- corrugated armwarmers
- short-row welts create an unusual curved form
- twisted-rib palms provide a close fit and grippy texture
- worked from palm to forearm with two options for length

PDF

SHOP PATTERN



APEX

Diagonal Cable & Lace Cardigan

FINISHED DIMENSIONS

40¼ (42¼, 43¼, 47¼, 51¼, 55¼)" circumference
at bust

Intended ease: +6–10"

Sample shown is size 40¼" with +5" ease on
model

GAUGE

18 stitches & 26 rows = 4" in stockinette
stitch with Size 4½ mm (US 7) needle(s), after
blocking

YARN

Shelter in color Sweatshirt

DESIGN HIGHLIGHTS

- open-front cardigan in braided cables and lace
- side-seam pockets
- bias shaping creates a mitered hem and a split at the neckline
- seamed construction
- knit from charted instructions



SHOP PATTERN



TETRAPODS

Geometric Lace Shawl & Scarf

FINISHED DIMENSIONS

10½ (16½, 22¾)" wide; 74½" long

GAUGE

21 stitches & 27½ rows = 4" in Tetrapods

Pattern with Size 3¾ mm (US 5) needle(s), after blocking

YARN

Loft in colors Cast Iron (medium shawl) and Almanac (large shawl)

DESIGN HIGHLIGHTS

- lace scarf or shawl in three widths
- tessellating geometric forms worked with patterning on both sides (no resting rows)
- knit from end to end



SHOP PATTERN





OUR YARNS

Designed, Sourced, Dyed & Spun in the USA

Brooklyn Tweed yarns are born in the shadow of the Bighorn Mountains of north central Wyoming, where ranchers have raised sheep for 150 years.

Our wool comes from three Johnson County ranches that husband Targhee-Columbia sheep, a distinctly American cross of two breeds with their origins in the wide-open spaces of the West. Both are large, sturdy animals able to withstand the harsh winters and terrain of their rangeland homes. The Targhee produces a finewool with Merino-like softness; Columbia wool is stouter and lends durability and character. The combination is ideal for the lofty, warm, woolen-spun yarns Brooklyn Tweed set out to create, yarns that are soft enough to wear against the skin but also long wearing and imbued with distinctive personality on the needles.

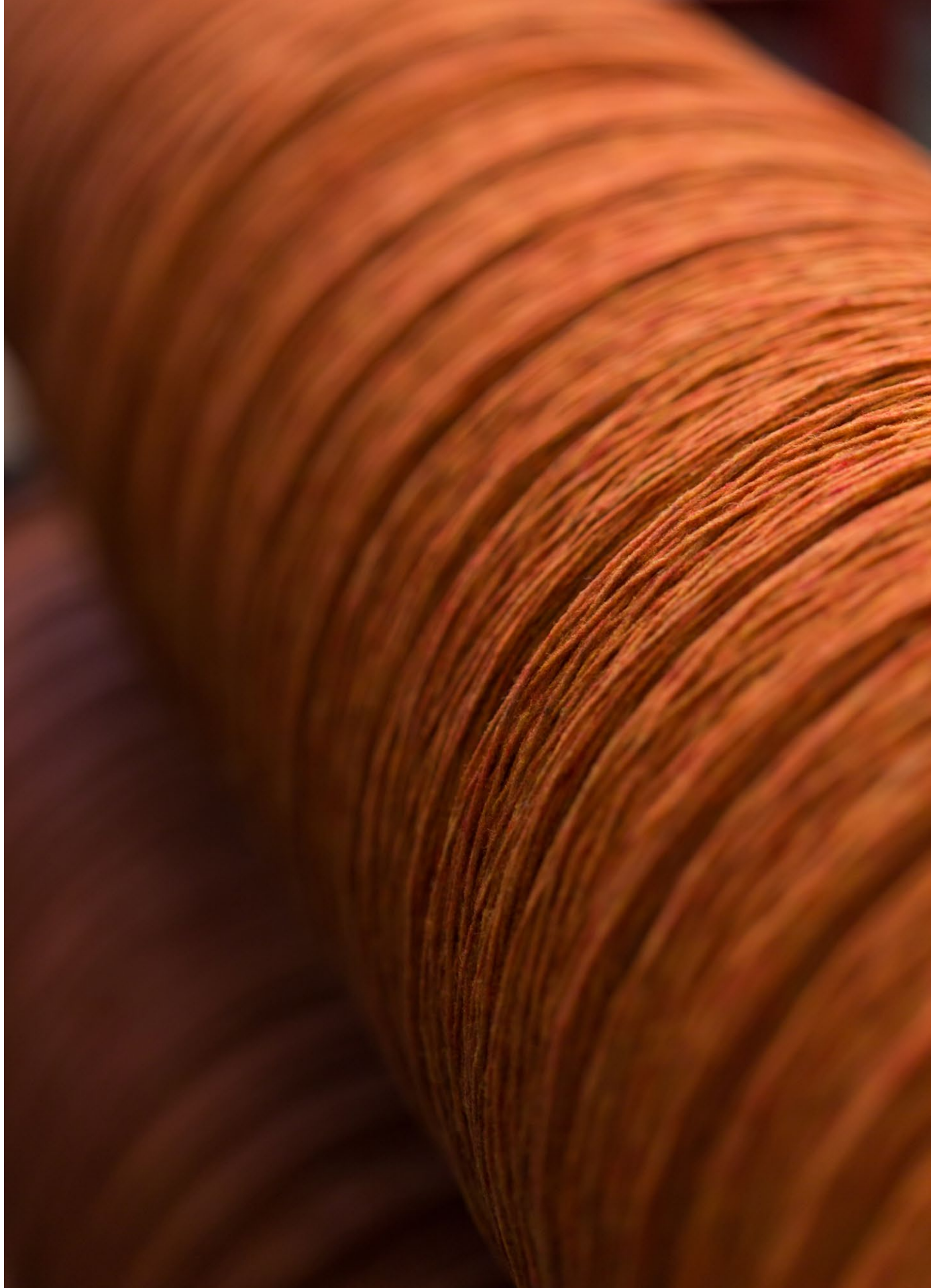
Each sheep will yield about 43 skeins of Loft or Shelter, or 21 skeins of Quarry, from a single shearing.

The fleeces travel from Wyoming to the Bollman Company in San Angelo, Texas for scouring. Bollman is a proud old company with nearly 150 years' experience in preparing wool for many purposes, including use in their signature Western hats. They handle our fleeces gently, cleaning them thoroughly but never subjecting them to the harsh chemical treatment called carbonization, which obliterates plant matter but can also damage the wool itself. As a result, our finished yarn still contains a few flecks of Wyoming flora—evidence that it comes from sheep that spend active lives in the great outdoors. We think it's worth picking out the occasional speck of hay during the knitting to preserve the purest qualities of the Targhee-Columbia fiber.

The clean wool is shipped to Pennsylvania, where G. J. Littlewood & Sons—now in their fifth generation and one of the last American survivors in the commercial dye business—create the sixteen solid colors that form the base of the Brooklyn Tweed heathered palette.

Once dyed in eye-searing colors—we start with very bright solids to retain purity of color once they're blended—the wool is baled in six-foot cubes and shipped north to Harrisville, New Hampshire.







Harrisville Designs operates in a 200-year-old mill designated as an historic landmark. The design collective was established in 1971 as a bold move to preserve a dying American craft and educate the public about one of New England’s foundational industries. Here Brooklyn Tweed yarns are blended into their 47 custom heathered shades, carded, spun, plied, skeined, and finished.

The “woolen” process utilized by the mill means the yarn is spun immediately after carding rather than running the fibers through a comb or pin-drafter to smooth and straighten them. This creates a jumbly, airy cloud of wool, feather light and wonderfully warm because so much air is trapped between the fibers. We retain that loftiness by spinning the wool quite gently, adding a little less twist than you’ll find in most commercial yarns.

The result is a quietly rustic, slightly thick-and-thin yarn that’s a bit more delicate than the high-twist, multi-ply structures to which many knitters are accustomed.

Once the yarn is knit and wet blocked, the stitches relax and cozy up to their neighbors to form a light, soft, and cohesive fabric that wears beautifully. Any pills that form are easily removed without damage to the surrounding fibers, so you can keep a garment knit from Loft, Shelter or Quarry looking handsome for many years.

Brooklyn Tweed is committed to producing 100% American wool yarns. We aim to offer our customers high quality knitting wools with distinctive characteristics. It gives us great pleasure to share the story and the experience of Brooklyn Tweed yarns with knitters around the world.



SHELTER

Worsted Weight Wool Yarn

The distinctive character of Targhee-Columbia wool shines in our versatile medium-weight yarn. Shelter is woolen spun, meaning the fibers remain in a lofty jumble that traps air and offers remarkable warmth and lightness. Its two plies are gently twisted to preserve that buoyant quality, so Shelter is a little more delicate than most commercial yarns. Woolen-spun yarns are also more adaptable in gauge, as they can compress to a dense sport weight or bloom to cohere as a gauzy fabric when worked on large needles. Shelter has a dry, soft hand and a faintly rustic nature; woolen spinning sometimes results in slightly thinner or thicker sections, and you'll find the occasional fleck of vegetable matter that proves our wool is never treated with harsh chemicals. Garments knit from Shelter achieve their full beauty after a wet blocking, as each stitch relaxes and bonds with its neighbors to produce an even, light, plush fabric with a halo. You shouldn't notice any change in gauge after blocking. Shelter is designed to be a workhorse yarn that invites cables, ribbing, textured stitch motifs, open work, plain stockinette and garter stitch. We think it's ideal for sweaters of every variety, winter accessories, and blankets.

100% Wyoming Targhee-Columbia Wool
140 yards per skein



SHOP SHELTER



LOFT

Fingering Weight Wool Yarn

Fingering-weight Loft channels Targhee-Columbia wool’s airy bounce into feather-light lace, accessories, and garments. Like Shelter, Loft is a woolen-spun 2-ply yarn with delicate twist, especially designed for unique lightness of hand. It’s not a sock yarn, so treat it a little more gently when it’s on the winder and the needles. Once your garment is blocked, the stitches will cohere in a beautifully even and sturdy fabric. Lace garments should open up to reveal stitch motifs with relatively mild blocking. Loft has great flexibility of gauge; it can be knit on 2mm (US 0) needles for a dense and durable fabric or on 4mm (US 6) needles for ethereal open work. Two strands of Loft held together can substitute for Shelter in patterns where you’d like greater stitch definition or a marled fabric of two colors.

100% Wyoming Targhee-Columbia Wool

275 yards per skein



SHOP LOFT



QUARRY

Chunky Weight Wool Yarn

Quarry is a chunky brother to Shelter and Loft inspired by roving-style “unspun” yarns, offered in pillowy 100-gram skeins. We begin with three strands of the same lofty, woolen-spun Targhee-Columbia fleece but rather than twisting the individual plies, we nestle them together and gently spin the whole trio. The result is a plump yarn that looks like a single ply yet has greater tensile strength and stitch definition than a true unspun yarn. Quarry has a soft and rustic hand; since we never subject our wool to harsh chemical scouring, you’ll find the occasional fleck of vegetable matter that remains as evidence of the sheep’s life on the Wyoming rangeland. The yarn’s one-directional twist may cause it to twirl between the needles and the ball while you’re knitting but the fabric will be well balanced with no biasing. Quarry knits will bloom to become cohesive and supple after a wet blocking. You shouldn’t notice any change in gauge. This yarn loves to cable and beautifully renders all kinds of textural stitch work. Despite its soft structure, it can be worked at looser gauges without loss of integrity to the fabric. We think it is ideal for sweaters, coats, blankets, and cozy accessories.

100% Wyoming Targhee-Columbia Wool

200 yards per skein



SHOP QUARRY

SHELTER + LOFT



ORDER A SHADE CARD

QUARRY



ORDER A SHADE CARD

CREDITS

BOOK

JARED FLOOD
Editor & Creative Director

SARAH POPE
Copywriter

JENNY TRYGG
Layout

PATTERNS

ROBIN MELANSON
Senior Tech Editor

CHRISTINE CRAIG
Counter Tech Editor

SUE MCCAIN
Counter Tech Editor

JEN HURLEY
Proofreader

ELIZABETH MCMURTRY
Proofreader

PHOTOGRAPHY

JARED FLOOD
Photographer

STEPHANIE GELOT
Wardrobe Stylist

JESS MORPHEW
Shoot Producer

TAKASHI ASHIZAWA
Hair & Make Up

KATY BEAL
Model

LOCATION

Cobble Hill, Brooklyn, New York
Special thanks to Lois & Gil Aronow



ABOUT THE DESIGNER

Olga Buraya-Kefelian learned to knit during her childhood in Belarus and acquired tailoring skills working alongside her mother, a professional seamstress. Traveling the world in service of her husband’s military career, Olga began to use knitting to explore the artistic inspiration she found in new lands and different cultures. She established Olgajazzy, her line of independent patterns, in 2006 and has collaborated with a number of yarn companies and publishers to release collections of garments and accessories stamped with her singular aesthetic. Olga’s designs are innovative and versatile, born of her interest in architecture and geometry but always grounded in practicality and attention to the learning experiences of the knitter. Follow her online at olgajazzy.com.



KEEP IN TOUCH



Facebook



Instagram



Pinterest



Ravelry



Twitter



WWW.BROOKLYNTWEED.COM