
BROOKLYN TWEED
FALL 2015

Lookbook

BROOKLYN TWEED
FALL 2015

Lookbook

Table of

CONTENTS

MASTHEAD

Outpost	6
Contributors	8

YARN NEWS

Hello Quarry	10
--------------	----

COLLECTION

Cascades Pullover	22
Trailhead Cardigan	24
Deschutes Pullover	26
Willamette Scarf	32
Nehalem Cardigan	36
Birch Bay Turtleneck	38
Bannock Coat	40
McLoughlin Pullover	44
Fletching Pullover	46
Sauvie Vest	52
Lolo Cap	54
Lander Coat	56
Riverbend Cardigan	60
Copse Wrap	62
Ashland Pullover	66

INFO

Collection Overview	70
Pattern Notes	76
Our Yarns	108
Yarn Profiles	116

END NOTES

Location Credits	126
Design Team	128
Keep In Touch	130

OUTPOST

Knitting season is upon us! Summer has one foot out the door and we are finally beginning to feel settled in our new home in Portland. The mornings are crisp and cool, the crackle from backyard fire pits can be heard in the evenings, and the familiar smell of fresh evergreens is an invigorating reminder of why this is a favorite time of year for so many of us, knitters or not.



Though I grew up here in the Pacific Northwest, coming back after 10 years on the East Coast has reminded me of what a unique place this really is. It's a kind of appreciation that I've only been able to achieve after an extended absence, like reconnecting with an old friend after several years apart and realizing with delight how much richer the relationship can be. Experiencing the onset of autumn here has surprised me with memories and forgotten sensations from a previous life—it has been a surreal and joyful experience.

This year we wanted to welcome fall with a collection inspired by the natural beauty of this special part of the country. Knitting is such a perfect companion for outdoor adventures: alongside the obvious perks of having wool sweaters to keep us warm and dry while exploring, the repetitive act of making stitches is a meditative way to slow down and appreciate the natural world around us.

I hope you enjoy our newest work and that it may inspire you to take an adventure or two of your own this autumn.

All my very best,

A handwritten signature in white ink, appearing to read 'Jared Flood', with a stylized, flowing script.

Jared Flood

Fall 2015

CONTRIBUTORS

Creative

JARED FLOOD

Art Direction, Photography, Layout
PORTLAND, OREGON

ASHLEY COURTER

Wardrobe Styling, Shoot Production
PORTLAND, OREGON

SARAH POPE

Copywriting
PORTLAND, OREGON

RYAN FLOOD

Senior Photo Assistant
PORTLAND, OREGON

ELIZABETH MCMURTRY

Photo Assistant, Pattern Proofing
PORTLAND, OREGON

ANNA MOORE

Photo Assistant, Pattern Proofing
PORTLAND, OREGON

MAHSA DARABI

Model
PORTLAND, OREGON

BRANDI SEYMOUR

Model
PORTLAND, OREGON

Knitwear Design

VÉRONIK AVERY

Knitwear Design
MONTREAL, CANADA

JARED FLOOD

Knitwear Design
PORTLAND, OREGON

NORAH GAUGHAN

Knitwear Design
PETERBOROUGH, NEW HAMPSHIRE

JULIE HOOVER

Knitwear Design, Pattern Layout
ANN ARBOR, MICHIGAN

MICHELE WANG

Knitwear Design
NEW YORK, NEW YORK

Production

ROBIN MELANSON

Pattern Writing, Senior Tech Editing
VERDUN, CANADA

CHRISTINE CRAIG

Technical Editing, Sample Knitting
ANN ARBOR, MICHIGAN

SUE MCCAIN

Technical Editing
JOHNSON CITY, TENNESSEE

JEN HURLEY

Pattern Proofing, Customer Support
PORTLAND, OREGON

BRISTOL IVY

Project Coordination
PORTLAND, MAINE

LEILA RAABE

Pattern Proofing
PORTLAND, MAINE

KEL MOORE

Wholesale
PORTLAND, OREGON

STEPHEN WANDERS

Fulfillment
PORTLAND, OREGON

Fabrication

JOSIE BRANCO

Sample Knitting
WILMETTE, ILLINOIS

NICOLE DUPUIS

Sample Knitting
OTTAWA, CANADA

SUMIKO HONG

Sample Knitting
DAVIS, CALIFORNIA

JOAN KASS

Sample Knitting
MILTON, CANADA

WANNIETTA KIRKPATRICK

Sample Knitting
ANGUS, CANADA

KIRSTY LAUDERDALE

Sample Knitting
VICTORIA, CANADA

ANGELIQUE MARK

Sample Knitting
DENVER, COLORADO

LYNN MARLOW

Sample Knitting
BEN WHEELER, TEXAS

LARISA PHIPPS

Sample Knitting
CENTERVILLE, UTAH

ELKE PROBST

Sample Knitting
ROCHESTER HILLS, MICHIGAN

MARTHA WISSING

Sample Knitting
KILLEEN, TEXAS

HELLO QUARRY

Our Newest All-American Gem



Meet the newest member of the Brooklyn Tweed yarn family, Quarry. This chunky Targhee-Columbia wool in ten fresh heathered colors will let you mine deep veins of bold texture and succulent cables. Each plump 100-gram skein is 200 yards of warm and lofty American wool, and although it looks like a single ply, it's actually three unspun strands nestled together and gently twisted. The result is a chunky-weight wool that marries the airy softness of a roving-style yarn with enough tensile strength and roundness to produce well-defined cables and textured knitwear.

While we've long wanted to add a quick-knitting chunky yarn to the Brooklyn Tweed

stable, we hoped to do something a little more interesting than simply bulking up Shelter with a third ply. When our partners at Harrisville Designs spun the prototypes for a chunky mock-twist in our Wyoming-grown wool, we knew we'd found our new yarn.

We were also intrigued by the effect this preparation has on our custom heathered color blends. Adding twist to the unspun plies creates tiny streaks of the contrast colors rather than tweedy flecks. The effect reminds us of the striations in sedimentary rocks, so we conjured a new color palette inspired by minerals and gemstones and gave Quarry its name.

Gypsum



Alabaster



Flint



Serpentine



Sulphur



Moonstone



Geode



Slate



Lazulite



Hematite







Knitting with Quarry is a singular experience. It's lively on the needles, and since the three plies are entirely unspun, there's nothing to counter the energy of the twist that binds them. While the yarn may twizzle between the ball and the needles, the finished fabric will be well balanced with no biasing. Ends of Quarry left to dangle tend to untwist and become vulnerable to breakage, so we recommend splicing each new ball and weaving in cast-on ends sooner rather than later. If you're sewing seams, just twirl the working yarn between your fingers in the direction of the twist to add a little more strength. Every order of Quarry we ship will include a card to remind you of these tips as you get to know this new yarn.

Now it's time to show you what Quarry can do. Our designers put this yarn through its paces with cables, textured stitches, open gauge fabric, and even mosaic knitting for our Fall 15 collection. These garments and accessories are sure to keep you and your knitworthy loved ones cozy as the leaves turn and the mercury drops. We hope you'll enjoy the character Quarry will bring to your workbasket as well as the satisfyingly speedy knitting.





THE GREAT OUTDOORS

Designs Inspired by the Pacific Northwest

The tickly tang of evergreen needles. The soft crunch of forest duff under hiking boots. The frigid clarity of alpine lakes reflecting a shoreline of pointed conifers and the imposing profile of an 11,000-foot peak. This is Oregon.

We ventured up to the Mt. Hood National Forest to shoot our first collection since our move to Portland. A Swedish-style *stuga* forest cabin and the trails around the shoulders of this mighty mountain provided the perfect backdrop for garments inspired by the misty woods, rocky shores, and jagged ranges of the Pacific Northwest. From Cowichan sweaters to thermal shirts, we've put a Brooklyn Tweed spin on the outdoorsy style of our new home.

Our Fall 15 collection offers twelve garments and three accessories knit from Shelter, Loft, and our new chunky-weight wool, Quarry. We hope you'll find the perfect project to transport you to this beautiful region of the world, imagining yourself settled into a streamside *stuga* of your own.

Knitwear by the Brooklyn Tweed Design Team

Images by Jared Flood



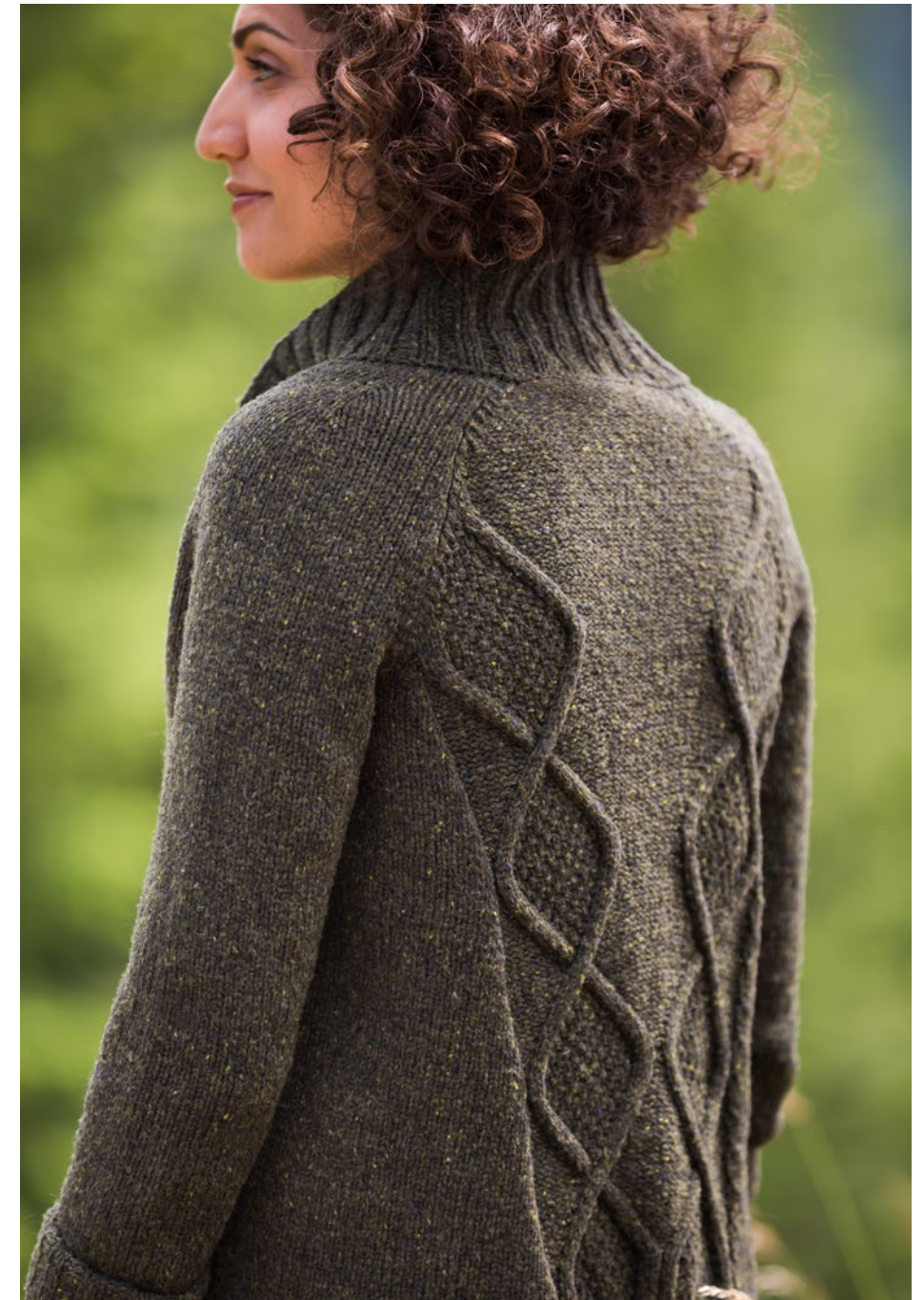
CASCADES
Pullover





TRAILHEAD

Cardigan



DESCHUTES
Pullover









WILLAMETTE
Reversible Cabled Scarf









BIRCH BAY
Turtleneck





BANNOCK
Cardigan Coat





—
MCLOUGHLIN
Pullover





FLETCHING
Pullover









SAUVIE
Cap Sleeve Vest





—
LOLO
Cap



LANDER
Coat





RIVERBEND
Hi-Lo Cardigan





COPSE
Wrap





ASHLAND
Colorwork Pullover





COLLECTION
OVERVIEW

COLLECTION OVERVIEW



CASCADES

Cable & Texture Raglan Pullover



DESIGN Michele Wang
YARN Shelter
COLORS Hayloft
INFO Page 80



BUY PATTERN



TRAILHEAD

Raglan Cardigan with Cabled Back



DESIGN Véronik Avery
YARN Loft (held double)
COLORS Artifact
INFO Page 82



BUY PATTERN



DESCHUTES

Textured Thermal Pullover



DESIGN Norah Gaughan
YARN Quarry
COLORS Slate
INFO Page 84

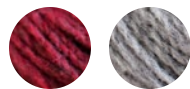


BUY PATTERN



WILLAMETTE

Scarf with Reversible Cable Pattern



DESIGN Norah Gaughan
YARN Loft
Shelter
COLORS Sweatshirt
Long Johns
INFO Page 86



BUY PATTERN



NEHALEM

Modern Cowichan Cardigan



DESIGN Jared Flood
YARN Shelter
COLORS Stormcloud, Fossil,
Cast Iron
INFO Page 88



BUY PATTERN



BIRCH BAY

Cabled Turtleneck Pullover



DESIGN Julie Hoover
YARN Shelter
COLORS Foothills
INFO Page 90



BUY PATTERN



BANNOCK

Textured Robe Cardigan



DESIGN Norah Gaughan
YARN Quarry
COLORS Hematite
INFO Page 92



BUY PATTERN



MCLOUGHLIN

Cabled Raglan Pullover



DESIGN Michele Wang
YARN Quarry
COLORS Alabaster
INFO Page 94



BUY PATTERN



FLETCHING

Raglan Pullover with Shoulder Detailing



DESIGN Jared Flood
YARN Shelter
COLORS Woodsmoke
INFO Page 96



BUY PATTERN



SAUVIE

Textured Cap-Sleeve Vest



DESIGN Véronik Avery
YARN Loft
COLORS Fossil
INFO Page 98



BUY PATTERN

LOLO

Sideways Garter Hat with Earflaps



DESIGN Jared Flood
YARN Shelter
COLORS Wool Socks
INFO Page 100



BUY PATTERN

LANDER

Two-Color Coat with Large Collar



DESIGN Véronik Avery
YARN Quarry
COLORS Slate
Moonstone
INFO Page 102



BUY PATTERN

RIVERBEND

Chunky Open-Gauge Cardigan



DESIGN Julie Hoover
YARN Quarry
COLORS Sulphur
INFO Page 104



BUY PATTERN

COPSE

Allover Cabled Wrap



DESIGN Michele Wang
YARN Quarry
COLORS Geode
INFO Page 106



BUY PATTERN

ASHLAND

Banded Colorwork Pullover



DESIGN Julie Hoover
YARN Loft
COLORS Fossil, Hayloft,
Truffle Hunt
INFO Page 108



BUY PATTERN

Pattern
NOTES



CASCADES

Cable & Texture Raglan Pullover

A mossy evergreen forest rendered in textured stitches. Cascades is a classic pullover in Shelter with panels of tree motifs in twisted stitches against a ground of double moss stitch. Columns of tiny, mirrored cables define the shifts in stitch pattern to create flattering vertical lines and pleasing side details. The body and sleeves are worked circularly from the bottom up and joined at the yoke, which is worked in the round until the neck shaping. The twisted-rib cuffs and hem flow beautifully from a rib cabled cast on, a useful technique fully explained in the pattern. Cascades is worked from a combination of charted and written instructions. Knit it in a modern bright hue—our sample is in Hayloft—or go timeless with a pale neutral like Fossil or Snowbound.

Designed by Michele Wang

Knit by Angelique Mark

PDF

BUY PATTERN



FINISHED DIMENSIONS

33 (38, 41, 46, 49, 54)" circumference at bust

Intended ease: +2-4"

Sample shown is size 38" with +4" ease on models

GAUGE

20 stitches & 30 rounds = 4" in Double Moss

Stitch with Size A needle(s), after blocking

YARN

Shelter in color Hayloft

DESIGN HIGHLIGHTS

- pullover with twisted-stitch tree motifs and double moss stitch
- worked in the round from a combination of charts and written instructions
- classic fit without waist shaping
- cable twist details run along side edges of body and sleeves, and flow directly into raglan detailing

TRAILHEAD

Raglan Cardigan with Cabled Back

Ready for a challenge? Trailhead is toothsome knitting with eye-catching results. This A-line raglan cardigan features twin strands of diamonds forking upward from the back hem. The fronts are in stockinette with handsome pockets for trailside treasures; the back is emblazoned with a dramatic V of reverse stockinette to show off cables filled with moss stitch. All pieces are knit flat, and an unusual shaping scheme provides a tailored fit around the shoulders but also means you'll need your wits about you as you work the back and yoke. The double-ribbed collar and button bands are worked on stitches picked up from the neck edge and the fronts; wear the collar turned up or down. Trailhead is knit in Loft held double for a dense, outerwear fabric—you may want to consider choosing two different hues for a marled effect.

*Designed by Véronik Avery
Knit by Wannietta Kirkpatrick*

PDF

BUY PATTERN



FINISHED DIMENSIONS

37¾ (40½, 46, 48¾, 53½, 56¾)" circumference at bust

Intended ease: +4-6"

Sample shown is size 40½ with +6" ease on model

GAUGE

19½ stitches & 30 rows = 4" in stockinette stitch with yarn held double, after blocking

YARN

Loft (held double) in color Artifact

DESIGN HIGHLIGHTS

- A-line raglan cardigan with pockets and geometric cable design
- cable motif worked from charts
- worked in pieces and seamed
- pieces are shaped with short rows, internal chart shaping, and internal garment shaping, often concurrently

DESCHUTES

Textured Thermal Pullover

The thermal pullover takes on a bold new look when rendered at an exploded scale in Quarry. The classic woodsman's waffle weave forms a geometric grid at this large gauge and is worked from a four-row pattern that's easily memorized. Deschutes is knit flat in pieces and sewn with partially exposed seams for rustic detail. Roomy sleeves are set in to ensure a tidy fit around the shoulders to balance the straight lines of the torso. Choose a size that gives you no more than 4-5" of ease if you want to keep the shape feminine. Deschutes is a good pattern for darker shades like Slate (shown here), Serpentine, or Hematite.

Designed by Norah Gaughan

Knit by Lynn Marlow

PDF

BUY PATTERN



FINISHED DIMENSIONS

33¾ (37½, 41¼, 45, 48½, 52¼)" circumference at bust

Intended ease: +4-5"

Sample shown is size 37½" with +3½" ease on model

GAUGE

13 stitches & 22 rows = 4" in Thermal Pattern after blocking

YARN

Quarry in color Slate

DESIGN HIGHLIGHTS

- boldly textured thermal pullover
- knit flat and sewn with partially exposed seams
- roomy, set-in sleeves

WILLAMETTE

Reversible Cabled Scarf

For gorgeous, unisex gift knitting, try Willamette, a deeply textured scarf with an original, reversible motif of cabled diamonds over garter stitch. There’s a chart for the A side and another for the B side; alternate knitting a row from each and you’ll end up with a beautifully patterned fabric that’s different but equally arresting on both sides. Willamette is active knitting with cables on every row, but the geometric motifs are predictable and easy to track. The pattern can be worked in Shelter for oversized coziness or in Loft for a scarf of more traditional scale.

Designed by Norah Gaughan
Knit by Martha Wissing

PDF

BUY PATTERN



FINISHED DIMENSIONS

Version I (Version II):
6¾ (9)" wide; 60¾ (73¾)" long

GAUGE

Version I: 40 stitches & 38 rows = 4" in Reversible Cable Chart Pattern with *Loft*, after blocking
Version II: 29 stitches & 27 rows = 4" in Reversible Cable Chart Pattern with *Shelter*, after blocking

YARN

Version I: *Loft* in color Sweatshirt
Version II: *Shelter* in color Long Johns

DESIGN HIGHLIGHTS

- textured scarf worked flat from end to end
- reversible cable motif forms different but complimentary patterns on each side
- knit from charts
- available in two sizes

NEHALEM

Modern Cowichan Cardigan

Inspired by the beautiful sweaters designed by the Cowichan knitters of Vancouver Island, Nehalem is a shawl-collared Shelter cardigan with bands of geometric colorwork adorning the lower torso. Gentle A-line shaping allows for comfortable layering over fall outfits and the garter-stitch shawl collar, shaped with short rows, folds snugly about the neck. Nehalem is worked with a steek at the center front so you can knit the colorwork in the round. Sleeves are also worked in the round to the underarm; the caps are knit flat and set in. The quiet, monochrome palette we chose nods to the natural sheep shades that characterize Cowichan colorwork, but feel free to knit up a blaze of autumn glory with our red and orange hues.

Designed by Jared Flood

Knit by Larisa Phipps

PDF

BUY PATTERN



FINISHED DIMENSIONS

34¼ (37¾, 41¼, 45¾, 49¼, 53¾)" circumference at bust, buttoned

Intended ease: +3-4"

Sample shown is size 37¾" with +3¾" ease on model

GAUGE

18 stitches & 28 rounds = 4" in single-color stockinette after blocking

YARN

Shelter in colors Stormcloud, Fossil, & Cast Iron

DESIGN HIGHLIGHTS

- shawl-collared cardigan with geometric stranded colorwork
- worked in the round with a steek
- sleeve caps and yoke knit flat and seamed
- shoulders and collar shaped with short rows

BIRCH BAY

Cabled Turtleneck Pullover

Delicate cables form decorative oak leaf medallions to paper the extra-wide fabric of this poncho-like pullover. On a ground of reverse stockinette, the cable motifs stand in relief like woodblock carvings. Side vents and exaggerated drop shoulders give this garment easy style, while a loose turtleneck provides a double layer of warmth around your neck. Birch Bay's front and back are knit flat and sewn together; stitches for the double-ribbed sleeves and neck are picked up and worked in the round. Tubular hems and chain selvages ensure a tidy finish everywhere. This garment is meant to be generously oversized, with 16-18" of ease.

Designed by Julie Hoover

Knit by the designer & Christine Craig

PDF

BUY PATTERN



FINISHED DIMENSIONS

49 (52½, 56½, 60, 63, 67)" circumference at bust

Sized to fit approximately 30-32 (34-36, 38-40, 42-44, 46-48, 50-52)" bust

Intended ease: +16-18" (generously oversized fit; sample shown is size 52½" with +18" ease on model)

GAUGE

17 stitches & 29 rows = 4" in reverse stockinette stitch, after blocking

YARN

Shelter in color Foothills

DESIGN HIGHLIGHTS

- wide-bodied drop-shoulder turtleneck with oak leaf cables
- body is knit flat and seamed, stitches for sleeves and neck are picked up and worked circularly
- generously oversized

BANNOCK

Textured Robe Cardigan

Wrap up in contemporary fall style with a swingy, open-front coat knit from cozy Quarry. The original crosshatch stitch pattern, worked from a chart and easily memorized, forms a fabric with bands of deep texture. The body is worked flat in one piece with decreases shaping a gentle A-line; long sleeves (designed to be cuffed back) are knit in the round and then joined to work a circular yoke. The front bands and collar are picked up and knit in single rib, with short rows shaping the collar. A single toggle allows you to close the fronts if desired. We styled Bannock with 9" of ease; choose a size that gives you 4-6" of ease for a more traditional fit. Worked in Hematite, this coat is plum autumn splendor; try it in Lazulite or Gypsum for urban chic.

Designed by Norah Gaughan

Knit by the designer

PDF

BUY PATTERN



FINISHED DIMENSIONS

39½ (43, 46½, 50, 53¾, 57¼)" circumference at bust, buttoned.

Intended ease: +4-6" (Sample shown is size 43" with +9" ease on model)

GAUGE

13½ stitches & 22 rows = 4" in Crosshatch Pattern, after blocking

YARN

Quarry in color Hematite

DESIGN HIGHLIGHTS

- chunky textured A-line coat with shawl collar
- worked seamlessly
- collar is shaped with short rows

MCLOUGHLIN

Cabled Raglan Pullover

Slightly cropped and thoroughly cabled, McLoughlin is the perfect partner for winter skirts and boots. Organic cable motifs twine up the front and sleeves of this pullover, worked entirely in the round in Quarry. The ground of reverse stockinette throws the cables into eye-catching high relief and lends subtle pebbled texture to the plain back. McLoughlin is designed for a close fit—our model is wearing it with just an inch of ease—with waist shaping and a modified raglan yoke. The front cables form flattering V's and a high ribbed turtleneck finishes the silhouette, providing cozy warmth against the rainy Northwest winter.

Designed by Michele Wang

Knit by Nicole Dupuis

PDF

BUY PATTERN



FINISHED DIMENSIONS

35½ (39, 42¼, 45¾, 49¼, 52¾)" circumference at bust

Intended ease: +2-4" (Sample shown is size 35½" with +1" ease on model)

GAUGE

14 stitches & 22 rounds = 4" in reverse stockinette stitch, after blocking

YARN

Quarry in color Alabaster

DESIGN HIGHLIGHTS

- slightly cropped cabled pullover
- cables worked from large charts
- knit in the round from the bottom up

FLETCHING

Raglan Pullover with Shoulder Detailing

Distinctive side and shoulder details make this reverse stockinette pullover fly true. Narrow columns of crossed stitches travel up the sides and beneath the sleeves to flow into the raglan lines at the yoke, with tendrils of crossed stitches joining the confluence to form a striking pattern. Fletching is worked in Shelter from the single-ribbed hem and cuffs upward, entirely in the round and from written instructions only. Long lines and waist shaping make this pullover elegant as well as comfortable. Choose a homey hue like Faded Quilt or Woodsmoke (shown here) or go festive with an autumn bright like Long Johns or Embers.

Designed by Jared Flood

Knit by Elke Probst

PDF

BUY PATTERN



FINISHED DIMENSIONS

35½ (39½, 43½, 47½, 51½, 55½)" circumference at bust

Intended ease: +5-6" (Sample shown is size 39½" with +5½" ease on model)

GAUGE

20 stitches & 30 rounds = 4" in reverse stockinette stitch, after blocking

YARN

Shelter in color Woodsmoke

DESIGN HIGHLIGHTS

- reverse stockinette pullover with distinctive shoulder details
- small cable motifs flow seamlessly from hem and cuffs into raglan detailing
- worked in the round from written instructions
- elongated slim fit

SAUVIE

Textured Cap-Sleeve Vest

A simple vest in Loft adds a light layer of warmth and texture to your fall wardrobe. Worked in moss stitch with delicate welt details at the edges and shoulders, Sauvie features a shallow V-neck and a slightly cropped high-hip length, perfect for pulling over buttondowns. The vest is worked flat from the bottom up with increases to create a gentle angle that results in a small wing of “sleeve” fabric flaring from the shoulder for an interesting silhouette. We knit Sauvie in a versatile pale neutral (Fossil), but it’s equally handsome in a dark shade like Artifact or Pumpernickel.

Designed by Véronik Avery

Knit by Joan Kass

PDF

BUY PATTERN



FINISHED DIMENSIONS

34¾ (39, 43¼, 47¼, 51½, 55¾)" circumference at bust

Intended ease: +4-6" (Sample shown is size 39" with +4½" ease on model)

GAUGE

23 stitches & 36 rows = 4" in Moss Stitch, after blocking

YARN

Loft in color Fossil

DESIGN HIGHLIGHTS

- slightly cropped vest in moss stitch
- knit flat
- welt details at shoulders and edges
- drop-shoulder shape forms small sleeve caps

LOLO

Sideways Garter Hat with Earflaps

Architectural lines and innovative construction elevate an aviator cap you can knit with a single skein of Shelter. Lolo is worked sideways from a provisional cast-on; crown shaping is achieved with short rows while increases and decreases form a sinuous brim that covers the ears. Lines of slipped stitches flow across the garter background to accentuate the shaping and create sculptural shifts in texture. This unisex hat can be knit in multiple sizes by changing needle size and gauge; directions are given for 18" and 20" circumferences. Block the finished cap over a steep-sided bowl or other head-shaped form to correct excessive angularity.

Designed by Jared Flood

Samples knit by the designer & Sumiko Hong

PDF

BUY PATTERN



FINISHED DIMENSIONS

Small/Medium (Large): 18 (20)" circumference; 10¼ (11¼)" height from center of crown to base of earflaps

GAUGE

Small/Medium: 20 stitches & 40 rows (20 ridges) = 4" in garter stitch, after blocking
Large: 18 stitches & 36 rows (18 ridges) = 4" in garter stitch, after blocking

YARN

Shelter in color Wool Socks

DESIGN HIGHLIGHTS

- knit sideways from a provisional cast-on
- crown shaped with short rows
- sinuous brim covers the ears
- knit multiple sizes by changing needles and gauge

LANDER

Two-Color Coat with Large Collar

Knit a mosaic masterpiece in two colors of Quarry for style you can take to the city or the country. This striking coat is worked flat in one piece to the underarms, with increases forming slanted fronts that fasten with a single large closure. The sleeves are also knit flat, and the double-ribbed bands and dramatic collar are worked on stitches picked up from the body once seaming is complete. Mosaic knitting uses only one color per row, slipping the stitches that will appear to form the foreground, so it doesn't create as thick and dense a fabric as stranded colorwork would. Choose two shades with high contrast—we used Slate and Moonstone—to make the most of Lander's graphic geometry, or try a subtly shifting combination like Alabaster and Gypsum.

Designed by Véronik Avery

Knit by Kirsty Lauderdale



BUY PATTERN



FINISHED DIMENSIONS

41 (45, 49, 53, 57½, 61½)" circumference at bust, buttoned

Intended ease: +10-12" (Sample shown is size 45" with +11" on model)

GAUGE

15½ stitches & 25 rows = 4" in slip-stitch pattern, after blocking

YARN

Quarry in colors Slate & Moonstone

DESIGN HIGHLIGHTS

- stylish long coat in two-color mosaic knitting
- body and sleeves worked flat
- dramatic ribbed collar, hem and cuffs
- leather closure from Jul Designs

RIVERBEND

Chunky Open-Gauge Cardigan

A boxy, open-gauge cardigan in Quarry: the ultimate in slouchy comfort that doesn't sacrifice good looks. Riverbend's hem is shaped with short rows so that the back is several inches longer than the cropped fronts. The deep V of the neckline makes it easy to layer. All pieces are knit flat, and we chose to assemble them with the purl side facing out, but instructions are also given for exposing the traditional knit side if you prefer. Two options are given for resolving the short rows so that they'll be least visible on the public side of your garment, whichever side you'd like that to be. Edgings in single rib keep this cardigan minimalist and unfussy, so you can throw it on over workout clothes or dress it up with slim trousers and a buttndown.

Designed by Julie Hoover
Knit by the designer



BUY PATTERN



FINISHED DIMENSIONS

35 (39½, 44, 48½, 53, 57½)" circumference at bust, buttoned

Intended ease: +4-6" (Sample shown is size 39½" with +5" ease on model)

GAUGE

10⅔ stitches & 15 rows = 4" in reverse stockinette stitch, after blocking

YARN

Quarry in color Sulphur

DESIGN HIGHLIGHTS

- boxy V-neck cardigan
- hem shaped with short rows
- knit flat; can be assembled with knit or purl side facing out

COPSE

Allover Cabled Wrap

Copse is more than six feet of plush texture to keep you cozy in the chill mountain air. This chunky wrap is proof that Quarry loves to cable, yielding opulent loops and chevrons that are plump and defined. Shifts in scale and direction of the cable crossings produce beautifully balanced, bold motifs. The wrap is worked flat from end to end, and a variation on I-cord at the long edges produces flat, non-curling selvages. Choose a pale hue like Alabaster, Moonstone, or Geode (shown here) to show off the cables most dramatically, or opt for a bright pop of color like Sulphur as a woodsy accent.

Designed by Michele Wang
Knit by Josie Branco

PDF

BUY PATTERN



FINISHED DIMENSIONS

17¾" wide; 75½" long

GAUGE

29 stitch panel from Chart A or B measures 5¼" wide, after blocking
23 rows = 4" in chart pattern

YARN

Quarry in color Geode

DESIGN HIGHLIGHTS

- chunky wrap with bold cables
- worked flat from end to end
- I-cord variation finishes the long edges

ASHLAND

Banded Colorwork Pullover

Modern minimalism transforms traditional stranded colorwork. Delicate peerie bands, strikingly graphic against the negative space of a pale background, are reminiscent of wire fences on western rangelands. Worked in only three colors of Loft, Ashland can take on very different appearances depending on the shades you choose—almost any combination of one light, one dark, and one bright should sing, and more closely related shades can produce a richly subtle effect. The pullover is knit in the round from the bottom up, with steeks for the armholes and set-in sleeve caps so that the work can continue in the round. Waist shaping and a generous neckline create a flattering garment that’s easy to layer over collared shirts or dresses. Neat tubular edges and hems and cuffs in single rib help Ashland strike a polished casual note.

Designed by Julie Hoover

Knit by the designer

PDF

BUY PATTERN



FINISHED DIMENSIONS

35¼ (39, 43, 46¾, 50½, 54½)" circumference at bust

Intended ease: +4-6" (Sample shown is size 39" with +5" ease on model)

GAUGE

25 stitches & 34 rounds = 4" in blocked Ashland colorwork pattern

YARN

Loft in colors Fossil, Hayloft & Truffle Hunt

DESIGN HIGHLIGHTS

- pullover with stranded colorwork in three shades
- worked in the round with steeks at the armholes and sleeve caps
- tubular edges for a perfect finish



OUR YARNS

Designed, Sourced, Dyed & Spun in the USA

Brooklyn Tweed yarns are born in the shadow of the Bighorn Mountains of north central Wyoming, where ranchers have raised sheep for 150 years.

Our wool comes from three Johnson County ranches that husband Targhee-Columbia sheep, a distinctly American cross of two breeds with their origins in the wide-open spaces of the West. Both are large, sturdy animals able to withstand the harsh winters and terrain of their rangeland homes. The Targhee produces a finewool with Merino-like softness; Columbia wool is stouter and lends durability and character. The combination is ideal for the lofty, warm, woolen-spun yarns Brooklyn Tweed set out to create, yarns that are soft enough to wear against the skin but also long wearing and imbued with distinctive personality on the needles.

Each sheep will yield about 43 skeins of Loft or Shelter, or 21 skeins of Quarry, from a single shearing.

The fleeces travel from Wyoming to the Bollman Company in San Angelo, Texas for scouring. Bollman is a proud old company with nearly 150 years' experience in preparing wool for many purposes, including use in their signature Western hats. They handle our fleeces gently, cleaning them thoroughly but never subjecting them to the harsh chemical treatment called carbonization, which obliterates plant matter but can also damage the wool itself. As a result, our finished yarn still contains a few flecks of Wyoming flora—evidence that it comes from sheep that spend active lives in the great outdoors. We think it's worth picking out the occasional speck of hay during the knitting to preserve the purest qualities of the Targhee-Columbia fiber.

The clean wool is shipped to Pennsylvania, where G. J. Littlewood & Sons—now in their fifth generation and one of the last American survivors in the commercial dye business—create the sixteen solid colors that form the base of the Brooklyn Tweed heathered palette.

Once dyed in eye-searing colors—we start with very bright solids to retain purity of color once they're blended—the wool is baled in six-foot cubes and shipped north to Harrisville, New Hampshire.







Harrisville Designs operates in a 200-year-old mill designated as an historic landmark. The design collective was established in 1971 as a bold move to preserve a dying American craft and educate the public about one of New England's foundational industries. Here Brooklyn Tweed yarns are blended into their 47 custom heathered shades, carded, spun, plied, skeined, and finished.

The "woolen" process utilized by the mill means the yarn is spun immediately after carding rather than running the fibers through a comb or pin-drafter to smooth and straighten them. This creates a jumbly, airy cloud of wool, feather light and wonderfully warm because so much air is trapped between the fibers. We retain that loftiness by spinning the wool quite gently, adding a little less twist than you'll find in most commercial yarns.

The result is a quietly rustic, slightly thick-and-thin yarn that's a bit more delicate than the high-twist, multi-ply structures to which many knitters are accustomed.

Once the yarn is knit and wet blocked, the stitches relax and cozy up to their neighbors to form a light, soft, and cohesive fabric that wears beautifully. Any pills that form are easily removed without damage to the surrounding fibers, so you can keep a garment knit from Loft, Shelter or Quarry looking handsome for many years.

Brooklyn Tweed is committed to producing 100% American wool yarns. We aim to offer our customers high quality knitting wools with distinctive characteristics. It gives us great pleasure to share the story and the experience of Brooklyn Tweed yarns with knitters around the world.





SHELTER

Worsted Weight Wool Yarn

The distinctive character of Targhee-Columbia wool shines in our versatile medium-weight yarn. Shelter is woolen spun, meaning the fibers remain in a lofty jumble that traps air and offers remarkable warmth and lightness. Its two plies are gently twisted to preserve that buoyant quality, so Shelter is a little more delicate than most commercial yarns. Woolen-spun yarns are also more adaptable in gauge, as they can compress to a dense sport weight or bloom to cohere as a gauzy fabric when worked on large needles. Shelter has a dry, soft hand and a faintly rustic nature; woolen spinning sometimes results in slightly thinner or thicker sections, and you'll find the occasional fleck of vegetable matter that proves our wool is never treated with harsh chemicals. Garments knit from Shelter achieve their full beauty after a wet blocking, as each stitch relaxes and bonds with its neighbors to produce an even, light, plush fabric with a halo. You shouldn't notice any change in gauge after blocking. Shelter is designed to be a workhorse yarn that invites cables, ribbing, textured stitch motifs, open work, plain stockinette and garter stitch. We think it's ideal for sweaters of every variety, winter accessories, and blankets.

100% Wyoming Targhee-Columbia Wool
140 yards per 50 gram skein



SHOP SHELTER



LOFT

Fingering Weight Wool Yarn

Fingering-weight Loft channels Targhee-Columbia wool’s airy bounce into feather-light lace, accessories, and garments. Like Shelter, Loft is a woolen-spun 2-ply yarn with delicate twist, especially designed for unique lightness of hand. It’s not a sock yarn, so treat it a little more gently when it’s on the winder and the needles. Once your garment is blocked, the stitches will cohere in a beautifully even and sturdy fabric. Lace garments should open up to reveal stitch motifs with relatively mild blocking. Loft has great flexibility of gauge; it can be knit on 2mm (US 0) needles for a dense and durable fabric or on 4mm (US 6) needles for ethereal open work. Two strands of Loft held together can substitute for Shelter in patterns where you’d like greater stitch definition or a marled fabric of two colors.

100% Wyoming Targhee-Columbia Wool

275 yards per 50 gram skein



SHOP LOFT



QUARRY

Chunky Weight Wool Yarn

Quarry is a chunky brother to Shelter and Loft inspired by roving-style “unspun” yarns, offered in pillowy 100-gram skeins. We begin with three strands of the same lofty, woolen-spun Targhee-Columbia fleece, but rather than twisting the individual plies we nestle them together and gently spin the whole trio. The result is a plump yarn that looks like a single ply yet has greater tensile strength and stitch definition than a true unspun yarn. Quarry has a soft and rustic hand; since we never subject our wool to harsh chemical scouring, you’ll find the occasional fleck of vegetable matter that remains as evidence of the sheep’s life on the Wyoming rangeland. The yarn’s one-directional twist may cause it to twirl between the needles and the ball while you’re knitting, but the fabric will be well balanced with no biasing. Quarry knits will bloom to become cohesive and supple after a wet blocking. You shouldn’t notice any change in gauge. This yarn loves to cable and beautifully renders all kinds of textural stitch work. Despite its soft structure, it can be worked at looser gauges without loss of integrity to the fabric. We think it is ideal for sweaters, coats, blankets, and cozy accessories.

100% Wyoming Targhee-Columbia Wool

200 yards per 100 gram skein



SHOP QUARRY

SHELTER + LOFT

						
Camper	Homemade Jam	Long Johns	Cinnabar	Wool Socks	Embers	Tallow
						
Bale	Hayloft	Sap	Fauna	Tent	Foothills	Birdbook
						
Artifact	Button Jar	Tartan	Faded Quilt	Stormcloud	Flannel	Almanac
						
Old World	Plume	Thistle	Blanket Fort	Postcard	Fossil	Woodsmoke
						
Barn Owl	Nest	Meteorite	Truffle Hunt	Pumpernickel	Cast Iron	Soot
						
Sweatshirt	Snowbound					



ORDER A SHADE CARD

QUARRY

				
Gypsum	Alabaster	Flint	Serpentine	Sulphur
				
Moonstone	Geode	Slate	Lazulite	Hematite



ORDER A SHADE CARD





—

LOCATION

For this collection we wanted to celebrate the natural beauty of our new home in the Pacific Northwest. We rented a cabin in the foothills of Oregon's majestic Mount Hood and shot the collection over two glorious days in July.

A special thanks to our friends at the Swedish *Stuga* in Rhododendron, Oregon!

The Brooklyn Tweed
DESIGN TEAM



VÉRONIK AVERY

Véronik is the founder of St-Denis Yarns and the author of *Knitting Classic Style* and *Knitting 24/7*.

Her work has appeared in countless knitting books, magazines (Interweave Knits, Knitscene, Vogue Knitting, Woman’s Day), and online publications (Knitty and Twist Collective).

She lives and works in Montreal, Canada.



JARED FLOOD

Jared is owner and creative director at Brooklyn Tweed. Having received his education in 2D design and photography, he began designing knitwear in 2007 and developing yarns in 2009.

He now spends his time doing creative development and knitwear design, along with his regular work leading the team at Brooklyn Tweed in Portland, Oregon.



NORAH GAUGHAN

The author of *Knitting Nature*, among other books, Norah has published designs in Vogue Knitting, Interweave Knits and countless other publications. She recently left her full-time design director position to focus on her independent design work.

A degree in Biology and Art and an upbringing in a household of free-lance illustrators prepared her (albeit indirectly) for a career as a knitwear designer. Keep up with her, and see where she’ll be teaching next, at norahgaughan.com.



JULIE HOOVER

Dedicated to clean, sophisticated, contemporary design throughout all her work, Julie retired her freelance art director business in 2011 to focus full time on her life-long passion—playing with textiles.

Based in Ann Arbor, Michigan, she is also a serious foodie and photo taker. Stay in touch with her at juliehoover.com.



MICHELE WANG

Based in New York City, Michele joined the Brooklyn Tweed Design Team in the Fall of 2011. She likes to explore the balance between comfort and trend in her work.

Her garments have been featured in knit.wear, amirisu and Vogue Knitting. Keep up with Michele at mishi2x.com.

KEEP IN TOUCH



Facebook



Instagram



Pinterest



Ravelry



Twitter



Google +

