

CAPSULE | MICHELE WANG

March 2017

Pattern Errata | Print Book; First Edition

Version 5.0 | Updated August 23, 2017

RAD MERE

CAPSULE Winter 2017 | Michele Wang for Brooklyn Tweed

(First Edition, January 2017), page 77, Left Side Sleeve Chart; pages 70 & 71, Left and Right Fronts

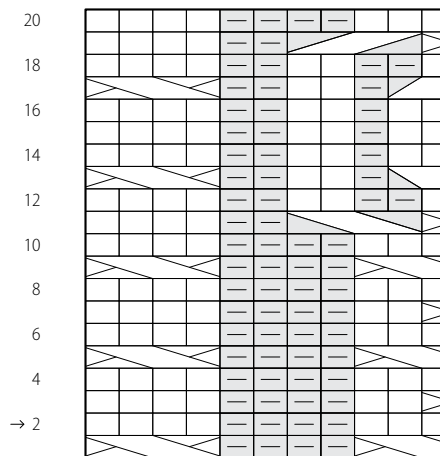
Date of Update: 23 January 2017 [Digital Pattern Version 2.0]; 22 August 2017 [Digital Pattern Version 3.0]

For additional information, see <https://www.brooklyntweed.com/pattern-errata/>

VERSION 2.0 CHANGES

The chart has been edited so that the cables on the far left now occur on rows 1, 5, 9, 13 and 17.

LEFT SIDE SLEEVE CHART



20-row repeat

VERSION 3.0 CHANGES

The cast on number for the Left and Right Fronts has been changed to 54 (62, 66, 74, 78, 86).

The end of the Work Ribbing section of Left and Right Fronts has been changed to "...ending with a WS row, and increasing 2 (0, 2, 0, 2, 0) stitches evenly spaced on last row. [56 (62, 68, 74, 80, 86) stitches now on needle]"

HAGUE

CAPSULE Winter 2017 | Michele Wang for Brooklyn Tweed
(First Edition, January 2017), page 64, Hague Chart.

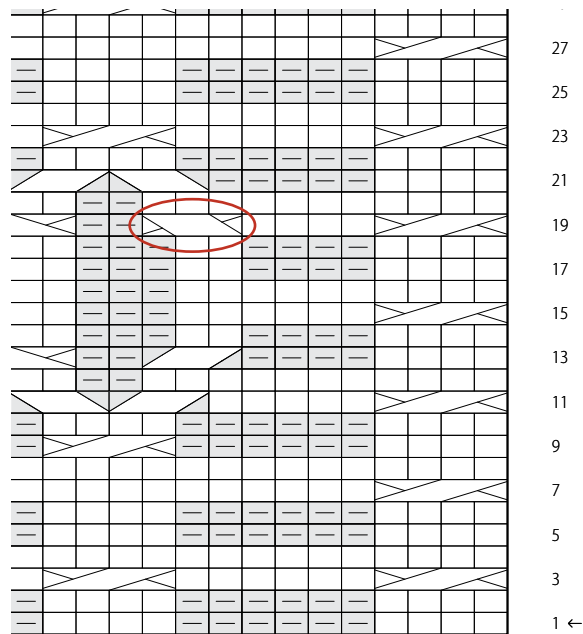
Date of Update: 01 February 2017 [Digital Pattern Version 1.1]

For additional information, see <https://www.brooklyntweed.com/pattern-errata/>

VERSION CHANGES

A 2/1 LT in Row 19 of the chart has been changed to a 2/1 LC.

HAGUE CHART



ILIA

CAPSULE Winter 2017 | Michele Wang for Brooklyn Tweed

(First Edition, January 2017), page 10, Ilia Overview.

Date of Update: 13 March 2017 [Digital Pattern Version 1.1]

For additional information, see <https://www.brooklyntweed.com/pattern-errata/>

VERSION CHANGES

The pattern blurb has been altered to reflect differences across sizes. It now reads:

Add structural flair to your wardrobe with a plush cabled cardigan. Wide bands of front ribbing fold back to form a collar and create an architectural silhouette. The densely worked fabric features rope cables spliced into a lattice for vivid texture and cozy warmth. Ilia's boxy fit makes for easy layering; the fronts may be pinned to close if you wish, so choose a size that gives you 3-5" of ease with the fronts overlapped.

ASPEN

CAPSULE Winter 2017 | Michele Wang for Brooklyn Tweed

(First Edition, January 2017), page 116 & 118, Left and Right Fronts

Date of Update: 22 August 2017 [Digital Pattern Version 2.0]

For additional information, see <https://www.brooklyntweed.com/pattern-errata/>

VERSION CHANGES

The cast on number for the Left and Right Fronts has been changed to 60 (68, 72, 80, 84, 92).

The end of the Work Ribbing section of Left and Right Fronts has been changed to "...ending with a WS row, and increasing 2 (0, 2, 0, 2, 0) stitches evenly spaced on last row. [62 (68, 74, 80, 86, 92) stitches now on needle]"