

---

# dapple

*Pure organic cotton and 20.7-micron Merino combine in a soft woolen-spun yarn appropriate for any season. A unique tonal dye process results in painterly, dappled color effects within each lot of color. Open your knitting to more expansive expression and create truly one-of-a-kind pieces with Dapple's distinct palette.*

## **US-GROWN FIBER**

*60% Colorado Merino  
40% Texas Organic Cotton*

## **KNITTING GAUGE**

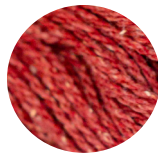
*DK-weight  
5¼-6 stitches per inch*



CERISE



HONEYCRISP



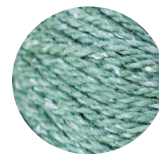
BLAZE



MEDALLION



SEAFOAM



CANOPY



BLUEPRINT



COSMOS



PLINTH



ANCHOR



NATURAL

## **CONSTRUCTION**

*Woolen-spun 2-ply*

## **SPUN**

*Two-Rivers, Wisconsin*

## **DYED**

*Philadelphia, Pennsylvania*