

SHELTER[®]

NATURE'S PALETTE

American Worsted-Weight Targhee-Columbia

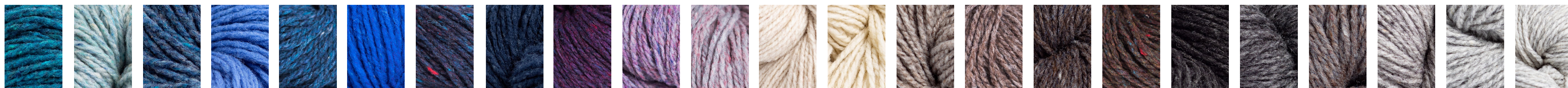
Wyoming-sourced breed-specific wool

Dyed in Pennsylvania, spun in New Hampshire

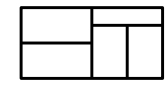
Woolen-spun 2-ply | 140 yards (128 meters) | 50g hank



HOMEMADE JAM VENEZIA CAMPER LONG JOHNS CARDINAL WOOL SOCKS EMBERS FIREBALL BALE HAYLOFT SAP POLLEN LEMON-GRASS YELLOW-STONE KLIMT FOOTHILLS ARTIFACT BIRDBOOK FOREST FLOOR BUTTON JAR NORTHERN LIGHTS FADED QUILT



TARTAN ICEBERG FLANNEL DELFT ALMANAC CADET OLD WORLD DEEP DIVE PLUME BLANKET FORT POSTCARD FOSSIL PUFF (undyed) WOOD-SMOKE NEST TRUFFLE HUNT METEORITE CAST IRON SOOT STORM-CLOUD SWEATSHIRT PUMICE SNOW-BOUND



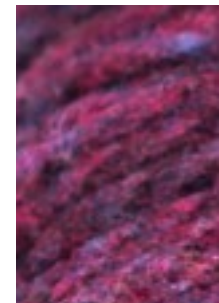
LOFT

American Fingering-weight Targhee-Columbia

Wyoming-sourced breed-specific wool

Dyed in Pennsylvania, spun in New Hampshire

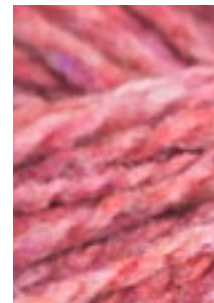
Woolen-spun 2-ply | 275 yards (251 meters) | 50g hank



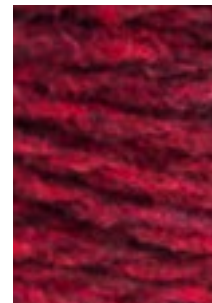
HOMEMADE JAM



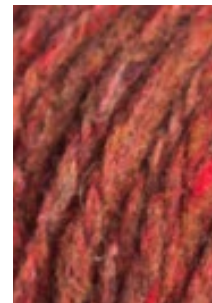
VENEZIA



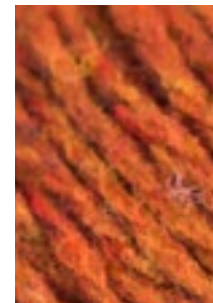
CAMPER



LONG JOHNS



WOOL SOCKS



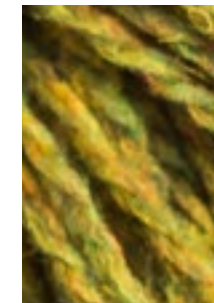
EMBERS



BALE



HAYLOFT



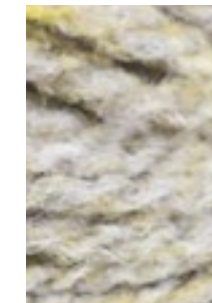
SAP



POLLEN



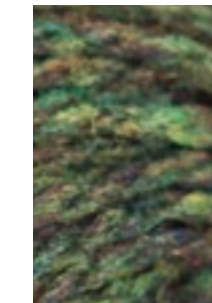
YELLOWSTONE



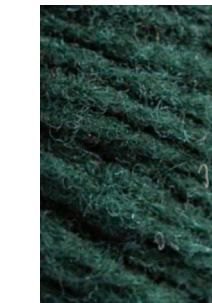
FOOTHILLS



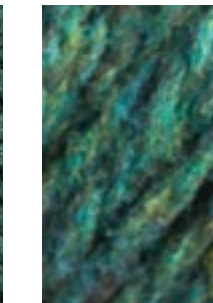
ARTIFACT



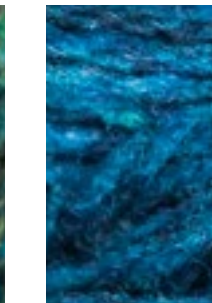
BIRDBOOK



FOREST FLOOR



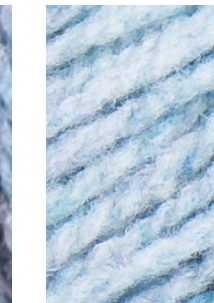
BUTTON JAR



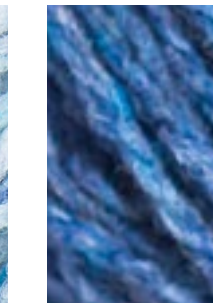
TARTAN



FADED QUILT



ICEBERG



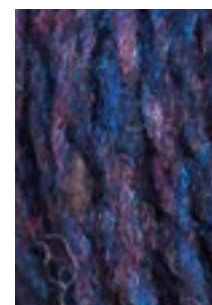
FLANNEL



CADET



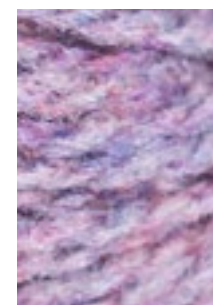
ALMANAC



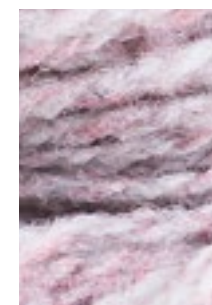
OLD WORLD



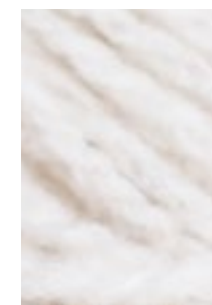
PLUME



BLANKET FORT



POSTCARD



FOSSIL



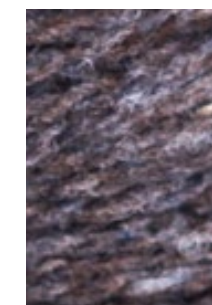
PUFF (undyed)



WOOD-SMOKE



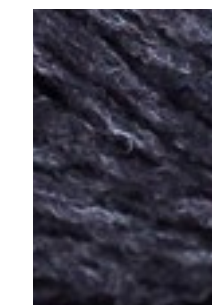
NEST



TRUFFLE HUNT



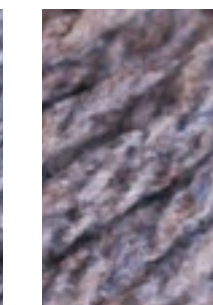
METEORITE



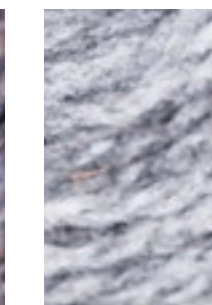
CAST IRON



SOOT



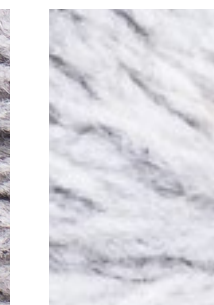
STORM-CLOUD



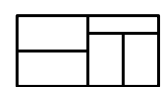
SWEATSHIRT



PUMICE



SNOW-BOUND



ARBOR

American DK-weight Targhee

Targhee wool sourced from Montana & South Dakota

Spun & dyed in Maine

Worsted-spun 3-ply | 145 yards (132 meters) | 50g hank



VINTNER

ALIZARIN

MESA

BUTTE

TINCTURE

KLIMT

BURNISHED

SPRUCE

RAINIER

LOVAT

TREEHOUSE

DORADO

SASHIKO



FLEET

COBBLER

BLACK FIG

DEGAS

ARABESQUE

PORTER

KETTLE

HUMPBACK

HERON

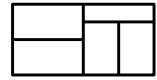
DRIFTWOOD

THAW

NORWAY

SEAGLASS

HAMMOCK



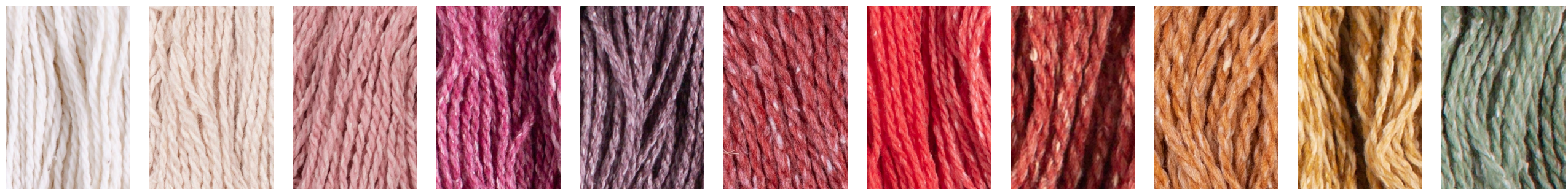
dapple

American DK-weight Merino Wool & Organic Cotton

60% 20 micron Merino wool from Montana & Colorado / 40% Organic cotton from Texas

Dyed in Pennsylvania, spun in Wisconsin

Woolen-spun 2-ply | Tonal-dyed | 165 yards (150 meters)



NATURAL

BARELY
THERE

PETAL

CERISE

CURRANT

TAYBERRY

HONEYCRISP

BLAZE

HONEYBEAR

MEDALLION

CANOPY



VERDIGRIS

SEAFOAM

MACARON

SALTWATER

BLUEPRINT

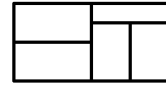
COSMOS

PERIWINKLE

PLINTH

BLACK
WALNUT

ANCHOR



imbue

SPORT

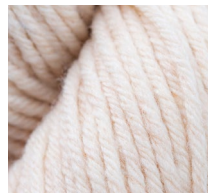
Worsted-spun 3-ply
190 yards (174 meters) | 50g hank

imbue

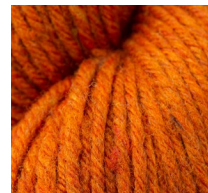
WORSTED

Worsted-spun 5-ply
104 yards (95 meters) | 50g hank

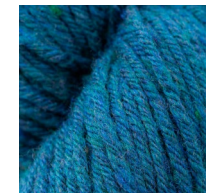
Merino wool sourced from Utah & Nevada | Dyed in North Carolina | Spun in Pennsylvania



crepe



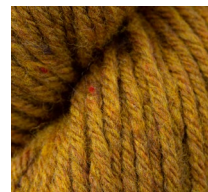
lantern



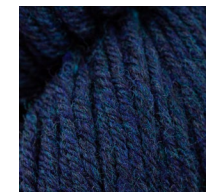
diebenkorn



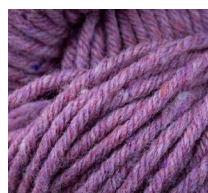
vapor



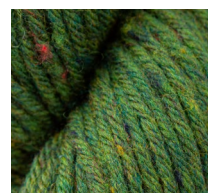
warbler



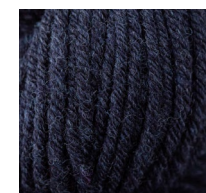
boro



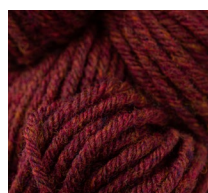
orchid



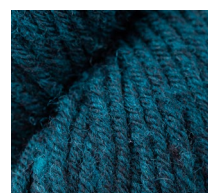
hummingbird



carbon



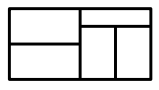
cloak



terrarium



ash



TONES

worsted weight
Woolen-spun 3-ply
140 yards (128 meters) | 50g hank

TONES LIGHT

fingering weight
Woolen-spun 2-ply
225 yards (206 meters) | 50g hank

Columbia wool sourced from Wyoming | Spun in Wisconsin | Dyed in Georgia & Pennsylvania

overtones undertones



hollyhock



lychee



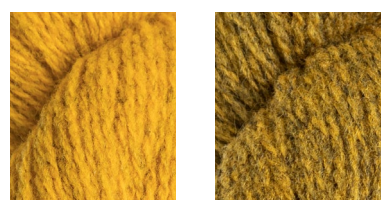
melba



acer



persimmon



goldfinch

overtones undertones



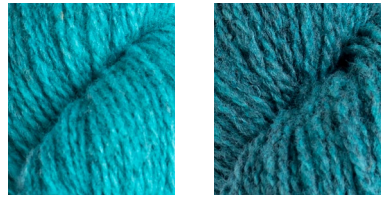
zest



granita



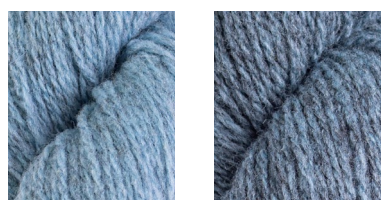
deco



vacay



icicle



stonewash

overtones undertones



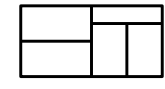
nimbus



wallflower



baseline



QUARRY

American Chunky-weight Targhee-Columbia

Wyoming-sourced breed-specific wool

Dyed in Georgia, spun in New Hampshire

Woolen-spun 3-ply | 200 yards (182 meters) | 100g hank



FOSSIL

WOODSMOKE

BARN OWL

NEST

OTTER



SNOWBOUND

PUMICE

SWEATSHIRT

SOOT

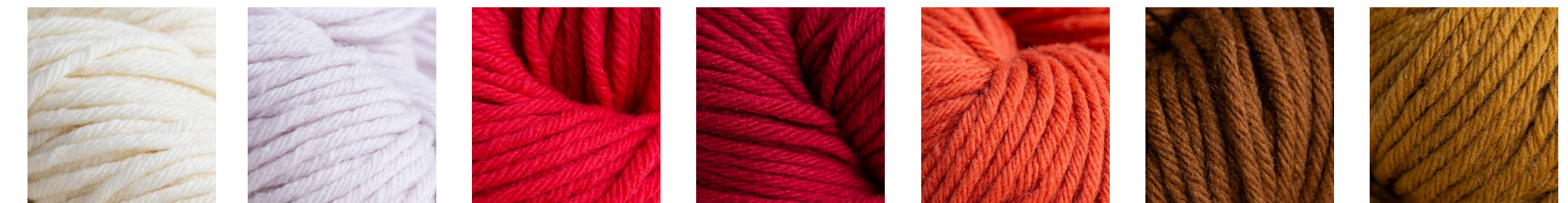
CAST IRON



ARBOR LODGE

Chunky weight

Targhee wool sourced from Montana & South Dakota | Spun in Maine
Dyed in Pennsylvania | Worsted-spun 7-ply | 125 yards (114 meters) | 100g hank



NATURAL

BARELY
THERE

SNOCCONE

COTTAGE

KILN

BURNISHED

KLIMT



POLLEN

CARGO

TAIL-
FEATHER

CADET

KNAPSACK

PEBBLE

*For information about our retired colorways
please visit our Retired Colors page.*

brooklyntweed.com/pages/retired-yarns

