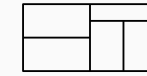


A man with dark skin and curly hair is seen from behind, standing in a lush green forest. He is wearing a light-colored, cable-knit sweater over a plaid shirt and blue jeans. The forest is filled with tall trees and dense foliage, with sunlight filtering through the leaves. The text 'THE BT FALL 13 COLLECTION' is overlaid in the center of the image.

THE
BT FALL 13
COLLECTION



THE
BT FALL 13
COLLECTION

from
The Brooklyn Tweed Design Team

Table of Contents

OUTPOST	7
DESIGN COLLECTION	
Coal Cardigan	10
Archer	12
Bray Pullover	16
Bray Cap	20
Vale	24
Trillium	26
Tread	32
Feather	36
Oshima	38
Hartford	42
Idlewild	44
Afton	46
Stonecutter	54
Jules	58
BLUEPRINTS	62
YARN INFORMATION	92
DESIGN TEAM	98
PRODUCTION CREDITS	103





OUTPOST

Escaping to the sanctuary of the woods is one of my favorite fall activities. It reminds me of my childhood growing up in the Pacific Northwest, when a misty morning in the forest was the perfect place to wear a wool sweater and enjoy the quiet.

It's the time of year when coats and blankets come out from their summer hiding places and knitting fingers start itching again. The crisp autumn air returns like an old friend who has been away too long.

The woods served as the inspiration for our collection this season, and our photoshoot celebrates the coming of autumn through the beauty of the outdoors. The images within this look book were created in Saugerties, New York where our creative team embarked on a good old-fashioned camping trip to set the stage for fourteen new fall knits.

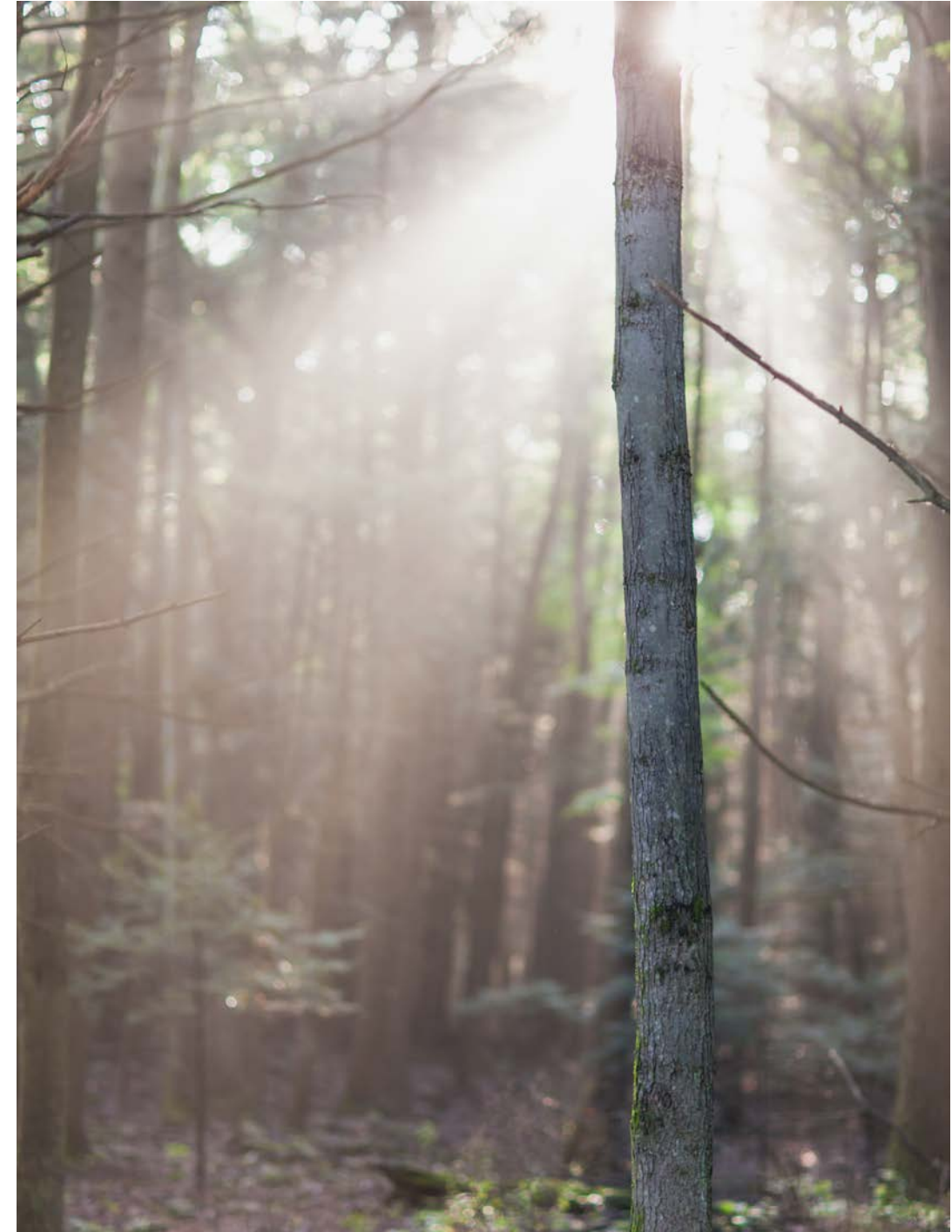
With this collection I wanted to pay homage to the classic cable knit, and charged our design team with the task of exploring that genre. Cables are truly inspirational and always remind me of the limitless number of fabrics that can be conceived and created, with knitwear. To me they are equally enchanting whether worn for utilitarian purposes (historic fishermen come to mind) or making a bold statement stomping down the runways of New York.

Be they delicate and sinewy or bold and sculptural, cables were a delicious springboard for this group of patterns and we hope you'll find something inspirational among these pages.

From our knitting chairs to yours - happy fall.

All my very best,

Jared Flood



A photograph of a forest with a tent and sunlight rays. The scene is a dense forest with tall, thin trees. Sunlight filters through the canopy, creating a hazy, ethereal atmosphere with visible light rays. In the lower right foreground, a tent is pitched on a patch of ground. The tent has a light-colored upper section and a bright orange lower section. The ground is covered with fallen leaves and a large, dark log lies in the foreground. The overall mood is peaceful and serene.

DESIGN COLLECTION



COAL CARDIGAN

by Véronik Avery

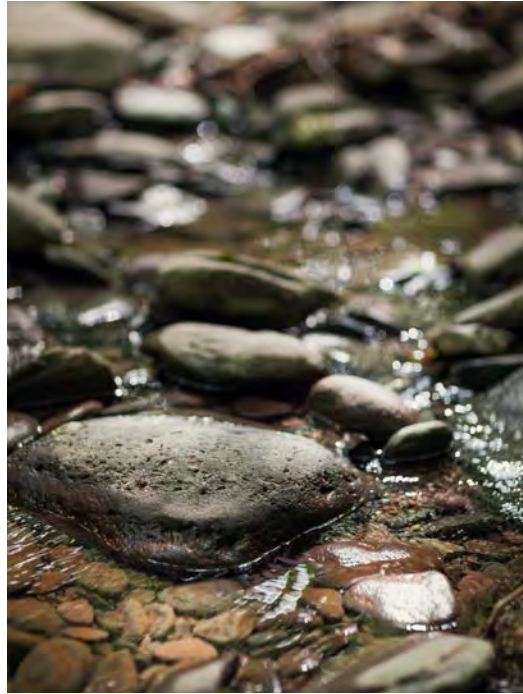




ARCHER

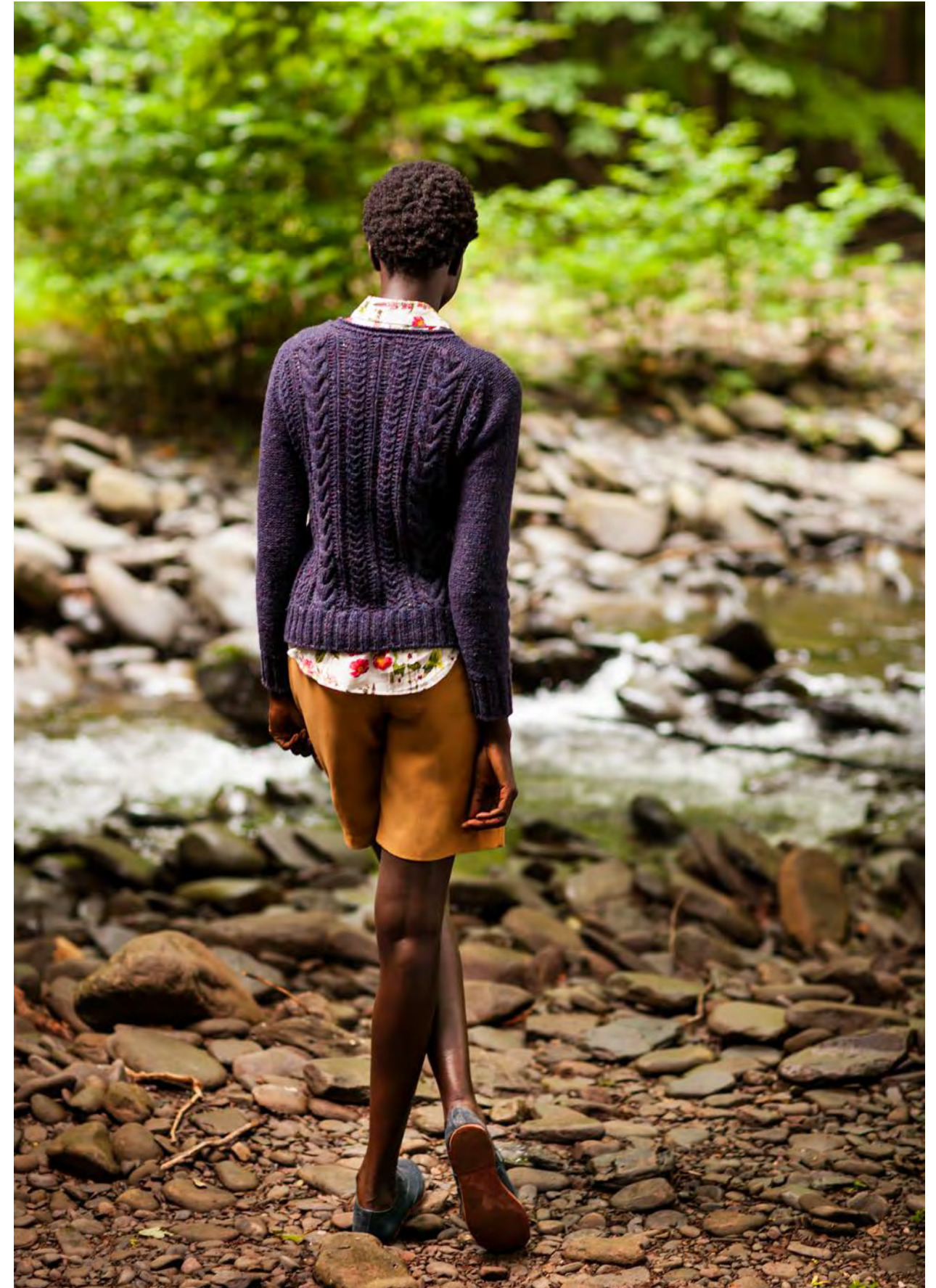
by Julie Hoover





ARCHER

by Julie Hoover



BRAY PULLOVER

by Jared Flood

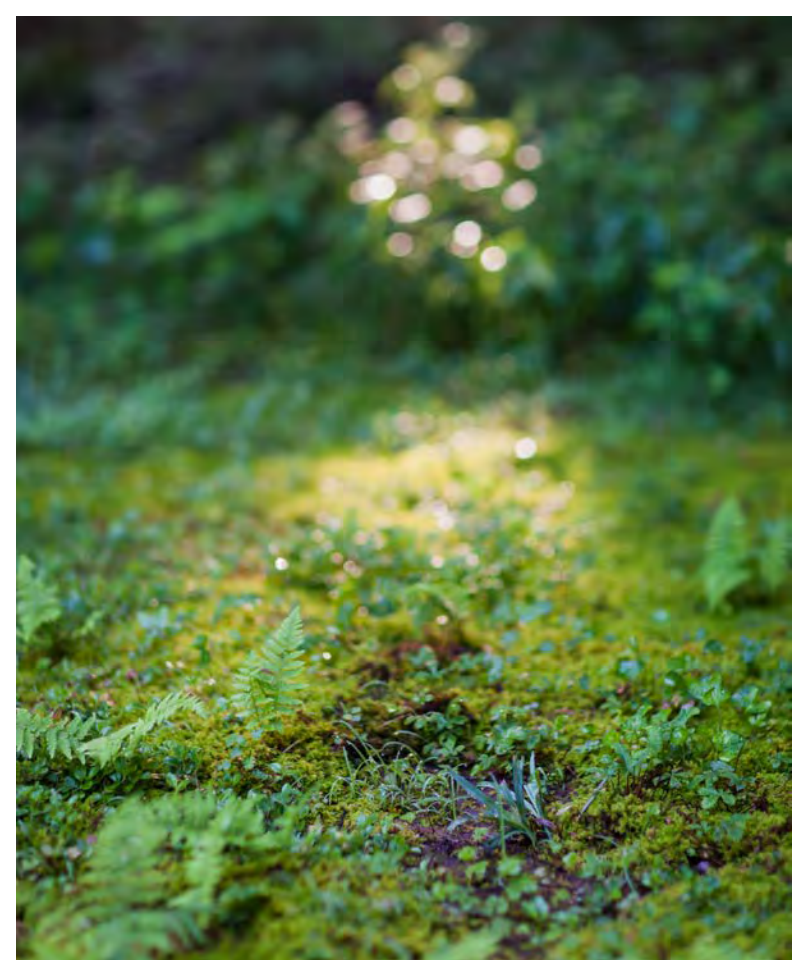




BRAY CAP

by Jared Flood

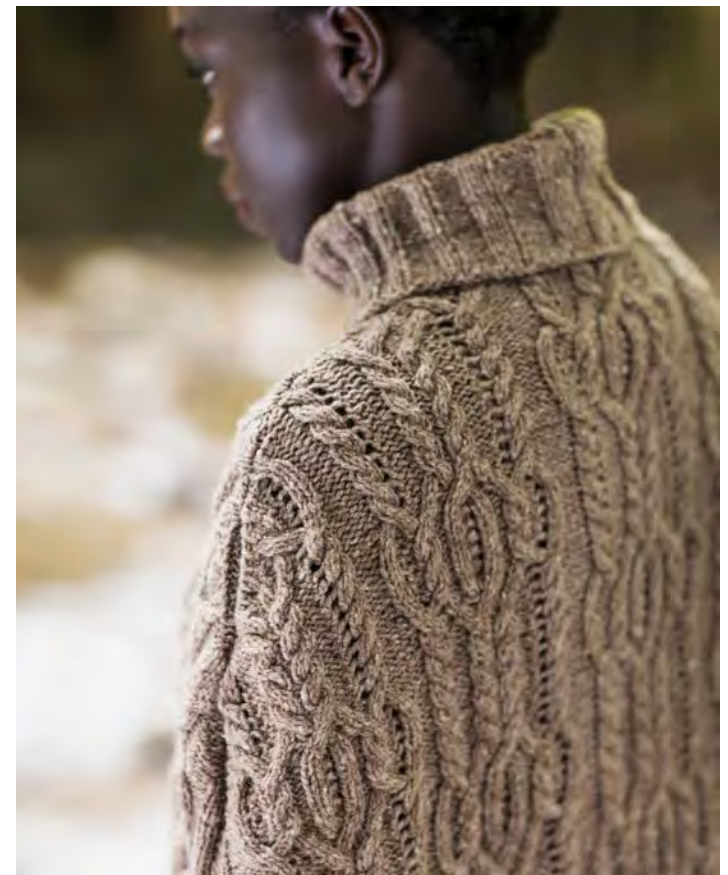






VALE

by Michele Wang





TRILLIUM

by Michele Wang

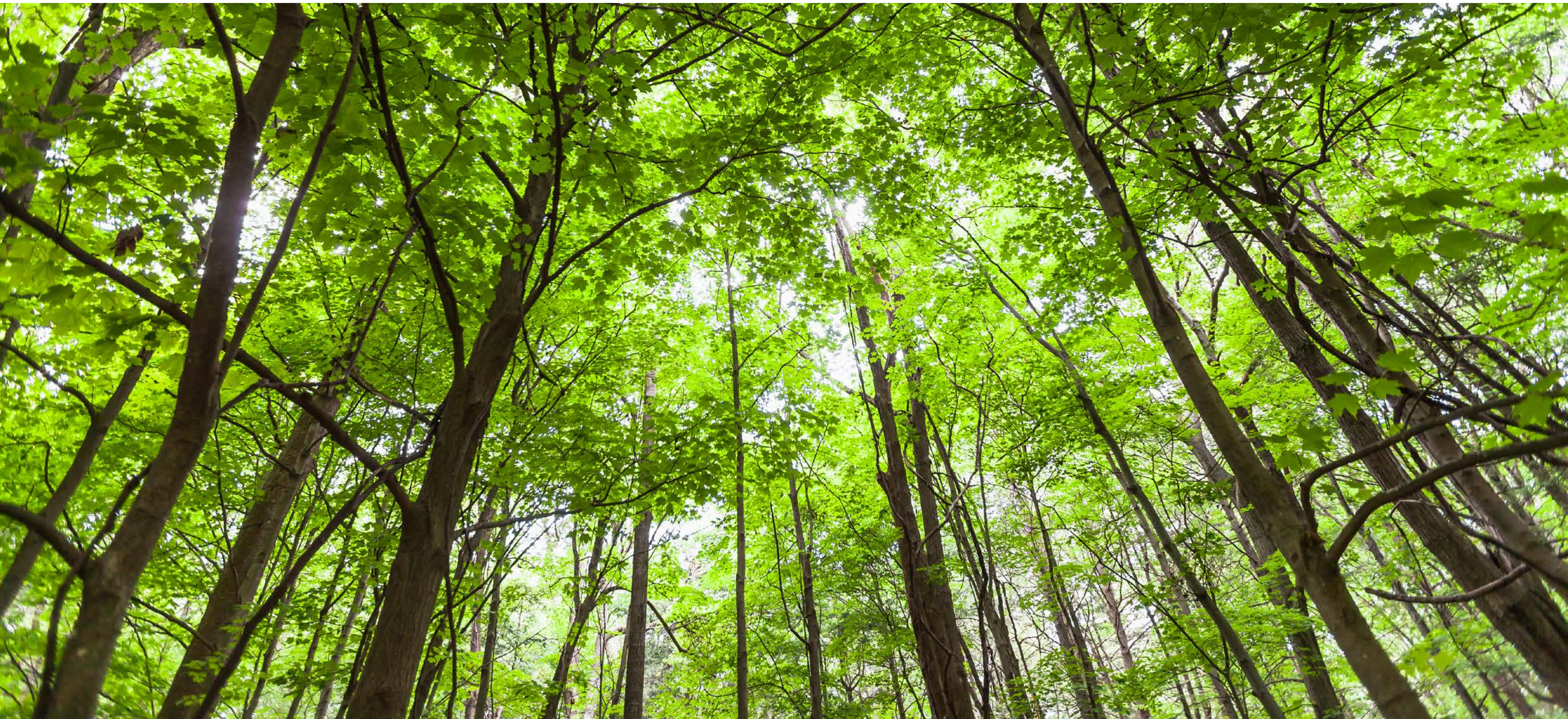






TREAD

by Michele Wang





FEATHER

by Véronik Avery



OSHIMA

by Jared Flood







HARTFORD

by Julie Hoover

IDLEWILD

by Julie Hoover





AFTON

STANDARD SCARF VARIATION

by Jared Flood





AFTON
OVERSIZED SCARF VARIATION
by Jared Flood







AFTON
WRAP VARIATION
by Jared Flood



STONECUTTER

by Michele Wang





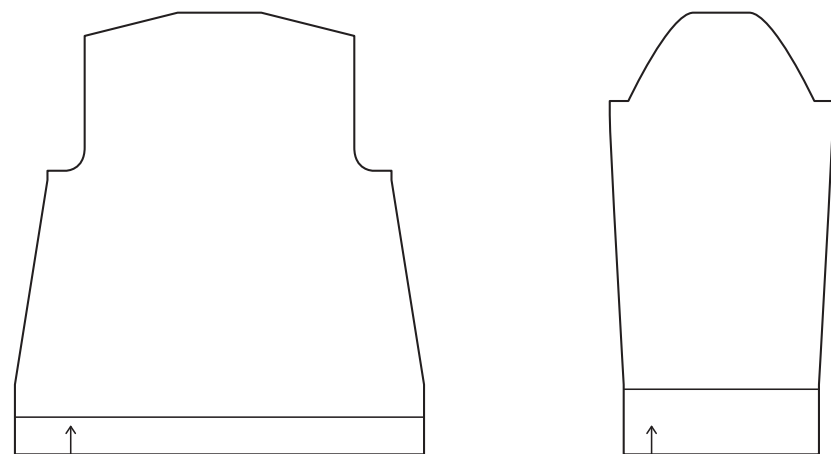
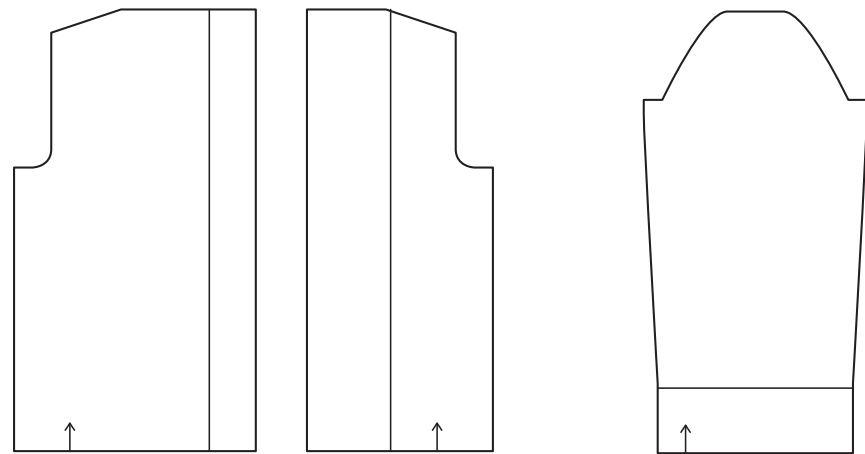


JULES
by Julie Hoover



DESIGN BLUEPRINTS





COAL CARDIGAN

by Véronik Avery



FINISHED DIMENSIONS

33¾ (37¼, 40¾, 44, 47½, 51, 54½)" circumference at bust, with Fronts overlapping

Intended Ease: + 2-4"

Sample shown is size 37¼" with + 3¼" ease on model

MATERIALS

8 (8, 9, 10, 11, 12, 13) skeins of Brooklyn Tweed *Shelter*

Photographed in color *Cast Iron*

GAUGE

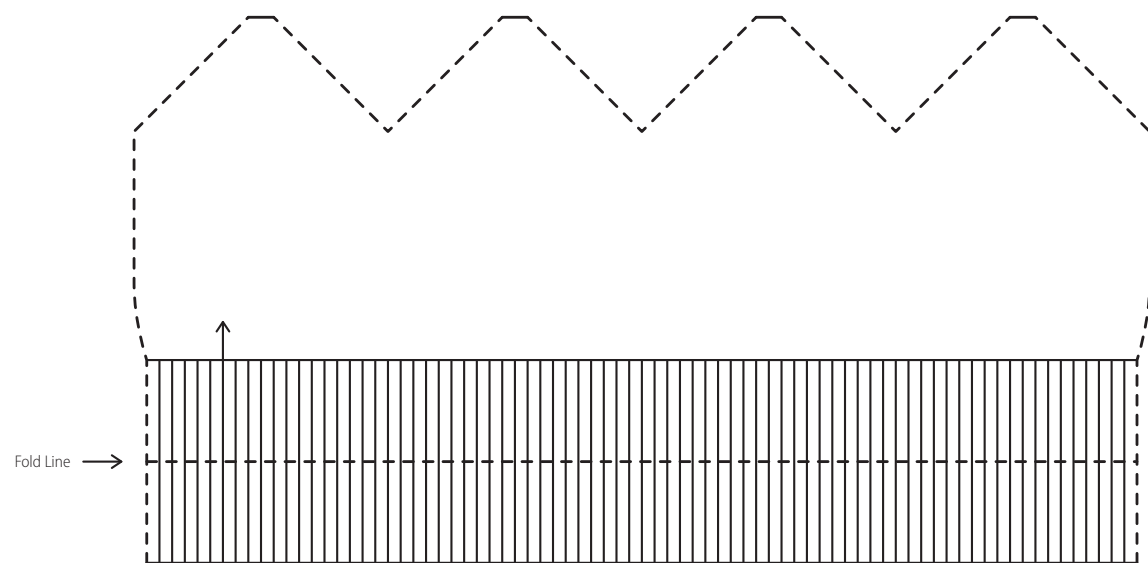
18½ stitches & 25 rows = 4" in stockinette stitch, after blocking

24 stitches & 25 rows = 4" in Left or Right Diagonal Cable Pattern, after blocking

DESIGN DETAILS

5-piece construction, knit flat from the bottom up, set-in sleeve, diagonal traveling cable motifs adorn asymmetric front panels, double moss stitch hem/cuff/bands, stand-up collar

CLICK THE PHOTO ABOVE TO PURCHASE PATTERN



ARCHER

by Julie Hoover



FINISHED DIMENSIONS

19½" Brim circumference; 20" Hat circumference; 8¾" length
To comfortably fit average adult head sizes of 20-22"

MATERIALS

3 skeins of Brooklyn Tweed *Shelter*
Photographed in colors *Almanac* and *Hayloft*

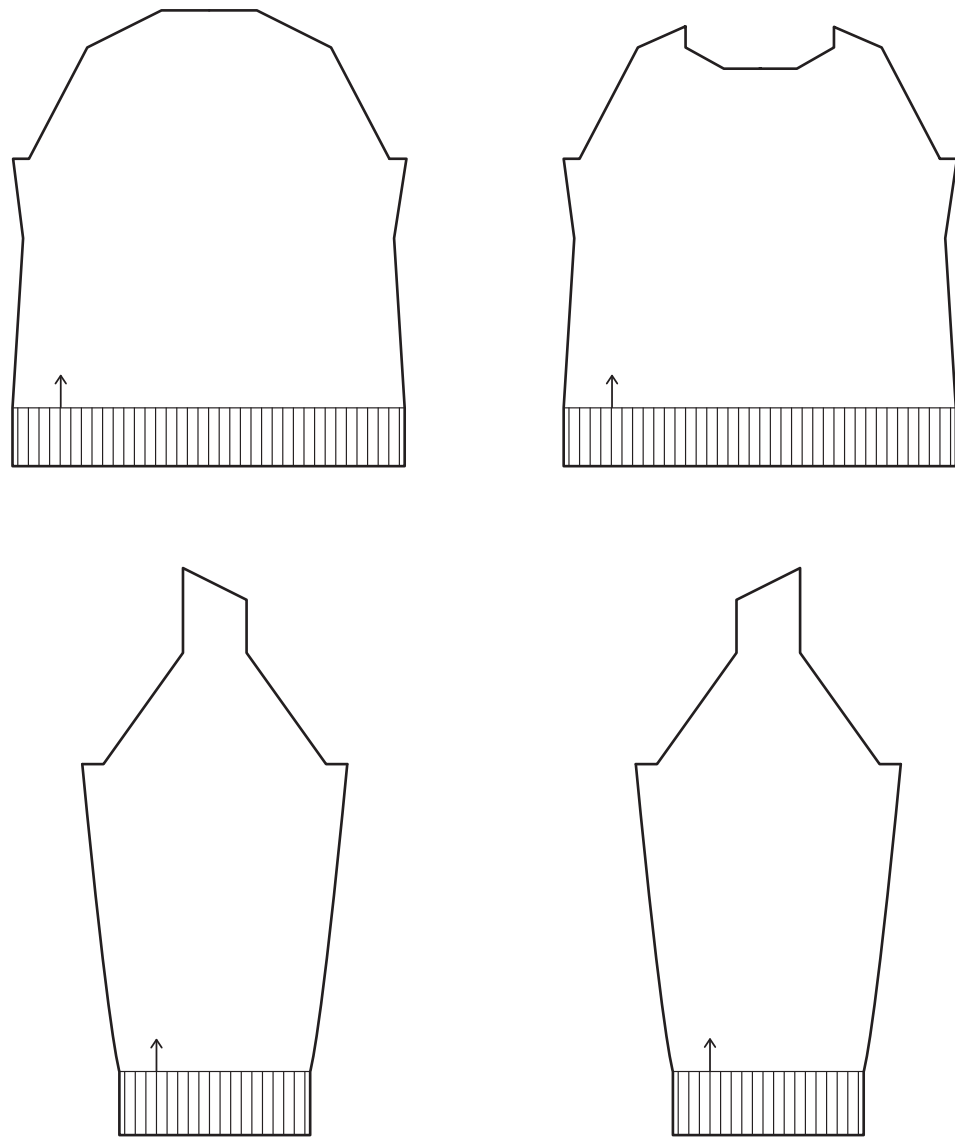
GAUGE

10 stitches & 15 rounds = 4" in stockinette stitch and yarn held quadruple, after blocking
14 stitches & 21 rounds = 4" in 2x2 Ribbing and yarn held double, fabric slightly stretched, after blocking
6-stitch Cable Panel from Chart measures 2" at widest point

DESIGN DETAILS

Single-piece construction, worked seamlessly in the round, oversized cable motifs, heavy-gauge fabric, dramatic silhouette, integrated crown shaping, doubled ribbed brim worked with yarn held double, cabled portion of hat worked with yarn held quadruple

CLICK THE PHOTO ABOVE TO PURCHASE PATTERN



BRAY

by Jared Flood



FINISHED DIMENSIONS

35¼ (37, 41, 45½, 49, 53¼)" circumference at bust

Intended Ease: + 2-4"

Sample shown is size 37" with + 4" ease on model

MATERIALS

7 (8, 9, 10, 11, 12) skeins of Brooklyn Tweed *Shelter*

Photographed in color *Old World*

GAUGE

18 stitches & 27 rows = 4" in reverse stockinette stitch, after blocking

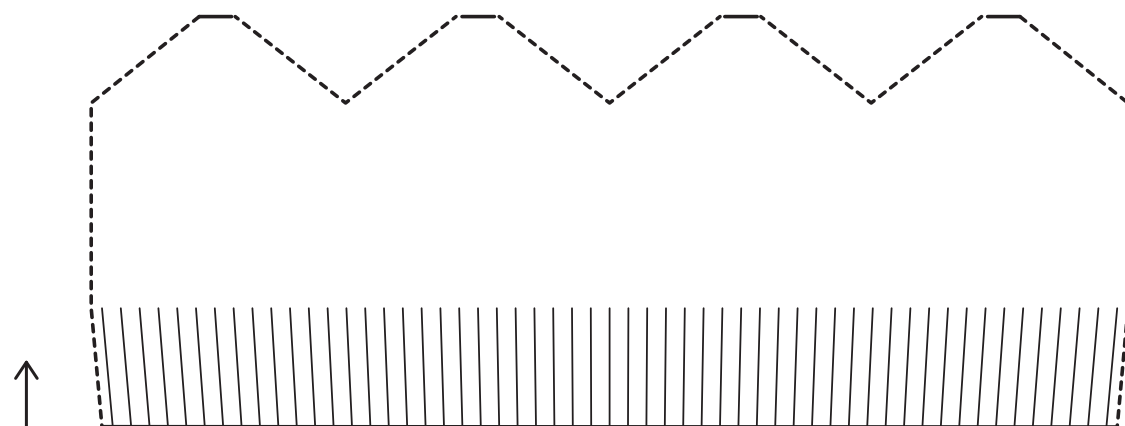
22 stitches & 27 rows = 4" in Bray Chart pattern, after blocking

One 42-stitch motif from Bray Chart measures 7¼" wide after blocking

DESIGN DETAILS

4-piece construction, knit flat from the bottom up, seamed, hybrid raglan-saddle yoke, vertical cable and lace motifs on body, reverse stockinette sleeves, 2x2 ribbed cuff and hem, rolled neck edging, waist shaping

CLICK THE PHOTO ABOVE TO PURCHASE PATTERN



BRAY CAP

by Jared Flood



FINISHED DIMENSIONS

20" circumference at widest point, 9¼" height
To comfortably fit average adult head sizes (20-24")

MATERIALS

2 skeins of Brooklyn Tweed *Shelter*
Photographed in colors *Woodsmoke & Embers*

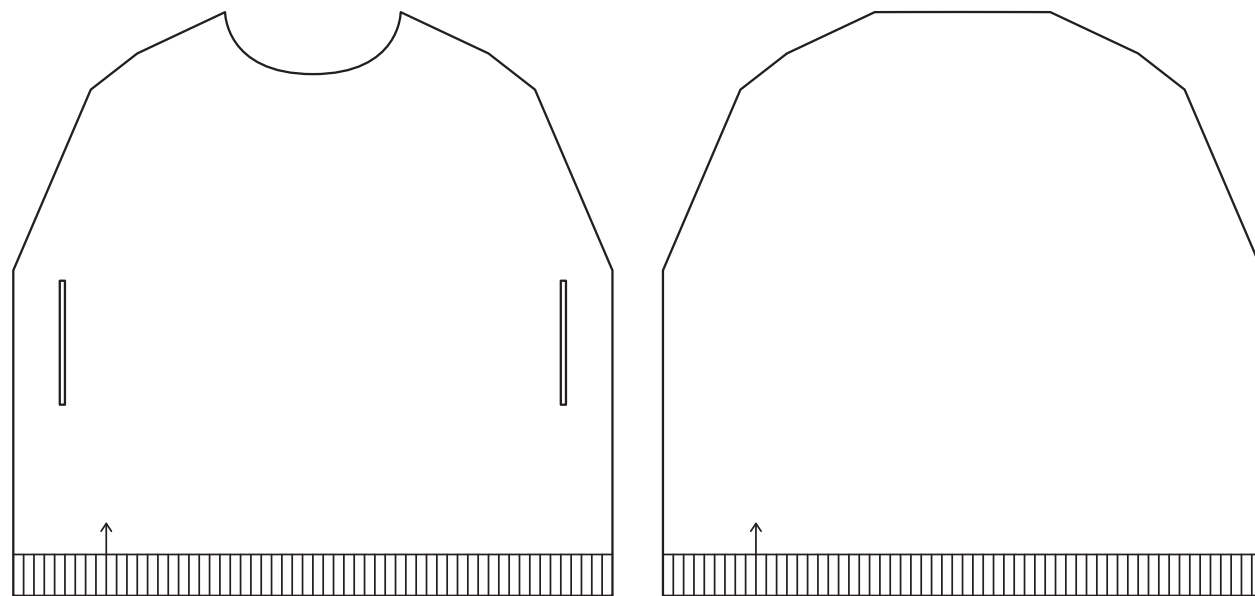
GAUGE

24 stitches & 29 rows = 4" over Lace and Cable pattern, relaxed after blocking
12-stitch Horseshoe Cable measures 2" wide after blocking

DESIGN DETAILS

Single-piece construction, knit circularly from the bottom up, tubular cast on, ribbed brim, lace and cable motifs, integrated crown shaping, slightly slouchy silhouette, companion piece to the Bray pullover

CLICK THE PHOTO ABOVE TO PURCHASE PATTERN



VALE

by Michele Wang



FINISHED DIMENSIONS

48¼ (58, 67½, 77)" circumference at hem; 35½ (43, 51, 58½)" circumference measured at upper arm;
 30½ (34, 38, 42)" circumference at shoulder; 26 (27¼, 28½, 29¾)" back length
 To fit approximate bust sizes 28-32 (34-38, 40-46, 48-52)"

MATERIALS

10 (12, 15, 17) skeins of Brooklyn Tweed *Shelter*
 Photographed in color *Barn Owl*

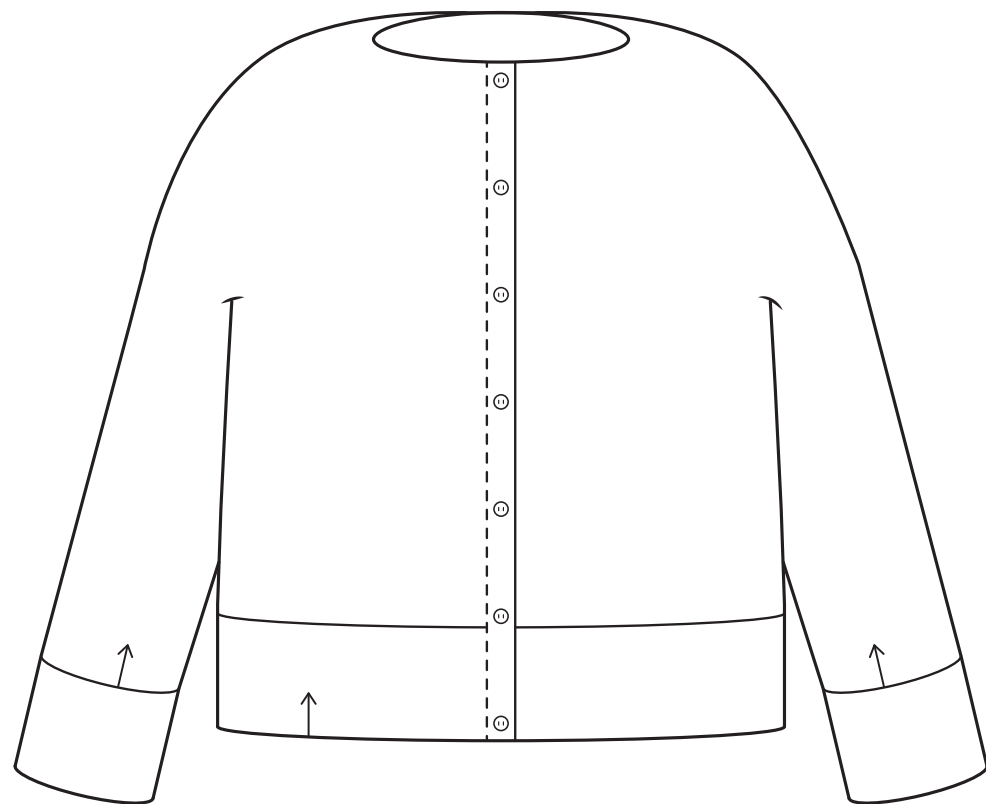
GAUGE

25 stitches & 32 rows = 4" in cabled pattern from Chart, after blocking

DESIGN DETAILS

2-piece construction, knit flat from the bottom up, seamed, slit armholes worked on front and trimmed with ribbed band, ribbed turtleneck with purled foldline, oversized fit

CLICK THE PHOTO ABOVE TO PURCHASE PATTERN



TRILLIUM

by Michele Wang



FINISHED DIMENSIONS

35½ (39½, 43½, 47½, 51½, 55½)" circumference at bust, closed

Intended Ease: + 3½-5½"

Sample shown is size 39½" with +6½" ease on model (shown with slightly more ease than suggested)

MATERIALS

8 (9, 10, 11, 12, 13) skeins of Brooklyn Tweed *Shelter*

Photographed in color *Plume*

GAUGE

20 stitches & 29 rows = 4" in stockinette stitch, after blocking

24 stitches & 32 rows = 4" in Twisted Broken Rib, after blocking

DESIGN DETAILS

Seamless construction, knit from the bottom up with no seaming, sleeves and body joined at underarm, round yoke worked seamlessly using concentric rings of shaping, textured chevron motif adorns base of yoke, beaded rib trim on hem and cuffs, small button closures, crew neck, slight A-line shaping

CLICK THE PHOTO ABOVE TO PURCHASE PATTERN



TREAD

by Michele Wang



FINISHED DIMENSIONS

41" circumference; 6½" height

MATERIALS

3 skeins of Brooklyn Tweed *Shelter*
Photographed in color *Long Johns*

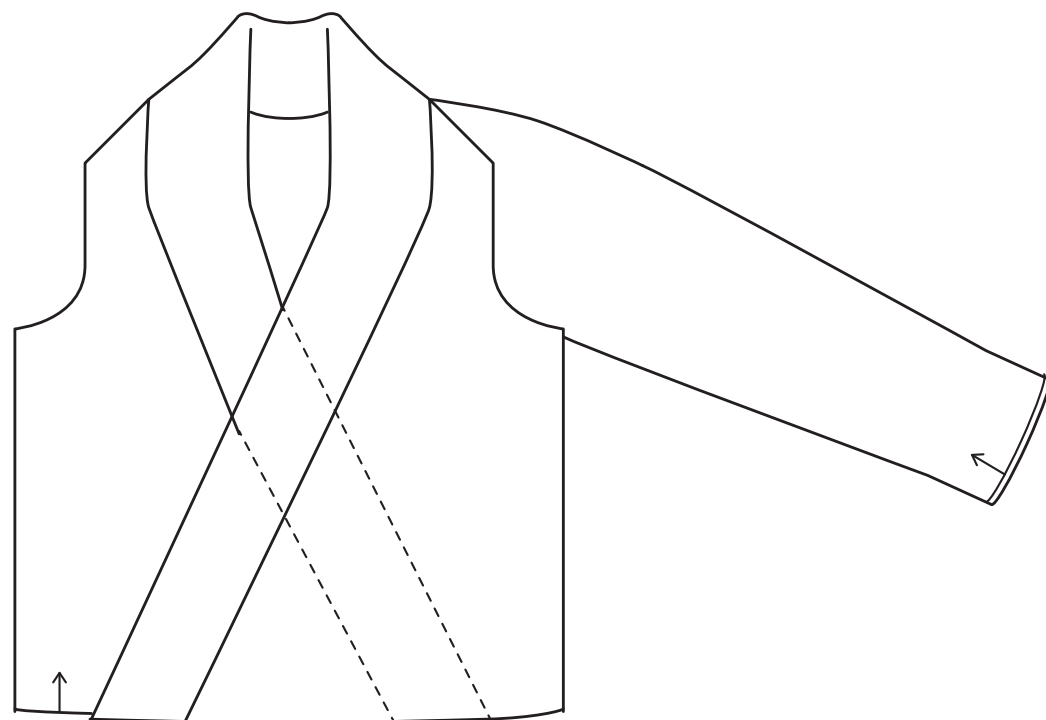
GAUGE

22 stitches & 34 rounds = 4" in cable pattern from Chart, after blocking

DESIGN DETAILS

Single-piece construction, worked circularly from the bottom up, applied I-cord along cast-on edge, I-cord bind off, zig-zag cable allover fabric

CLICK THE PHOTO ABOVE TO PURCHASE PATTERN



FEATHER

by Véronik Avery



FINISHED DIMENSIONS

39½ (43, 46¼, 49¾, 53, 56½, 59¾)" garment at bust

Intended Ease: + 8-10"

Sample shown is size 43" with + 10" ease on model

MATERIALS

9 (10, 11, 13, 14, 15, 17) skeins of Brooklyn Tweed *Shelter*

Photographed in color *Foothills*

GAUGE

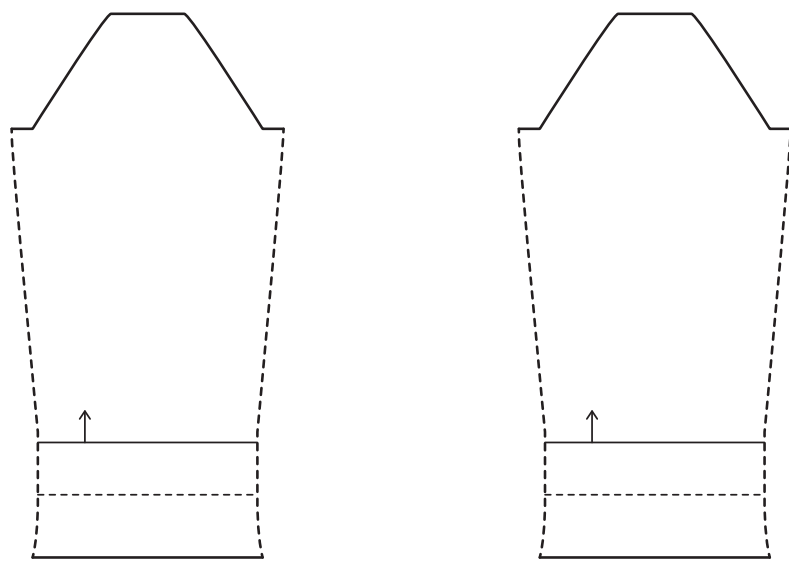
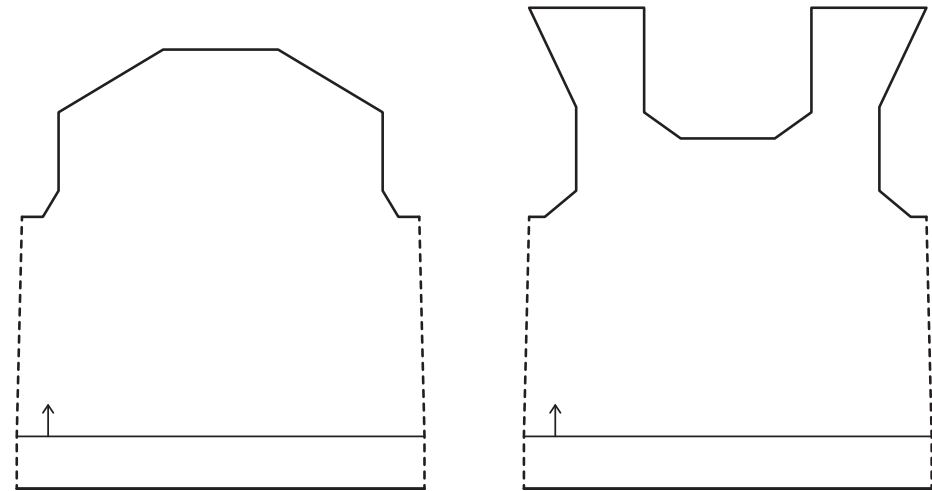
19 stitches & 25 rows = 4" in stockinette stitch, after blocking

27-stitch panel from either Chart measures 6" wide

DESIGN DETAILS

Seamless construction, sleeves worked circularly and body worked flat from hem to underarm, pieces are joined and worked concurrently for yoke, overlapping fronts, swing silhouette, lace and cable "feather" motif along band and collar, shirt yoke is joined to back as it is worked, central shaping details on upper sleeve cap

CLICK THE PHOTO ABOVE TO PURCHASE PATTERN



OSHIMA

by Jared Flood



FINISHED DIMENSIONS

34 (38, 42, 46, 50, 54)" circumference at bust
 Intended Ease: + 4-5"
 Sample shown is size 38" with + 4" ease on model

MATERIALS

9 (10, 11, 12, 13, 14) skeins of Brooklyn Tweed *Loft*
 Photographed in color *Sweatshirt*

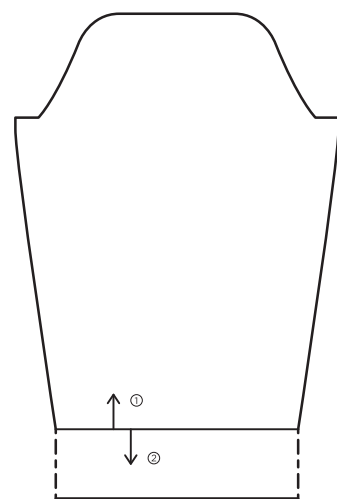
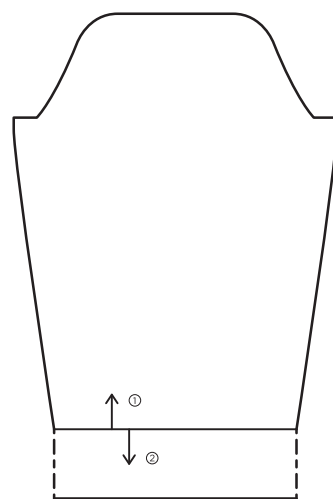
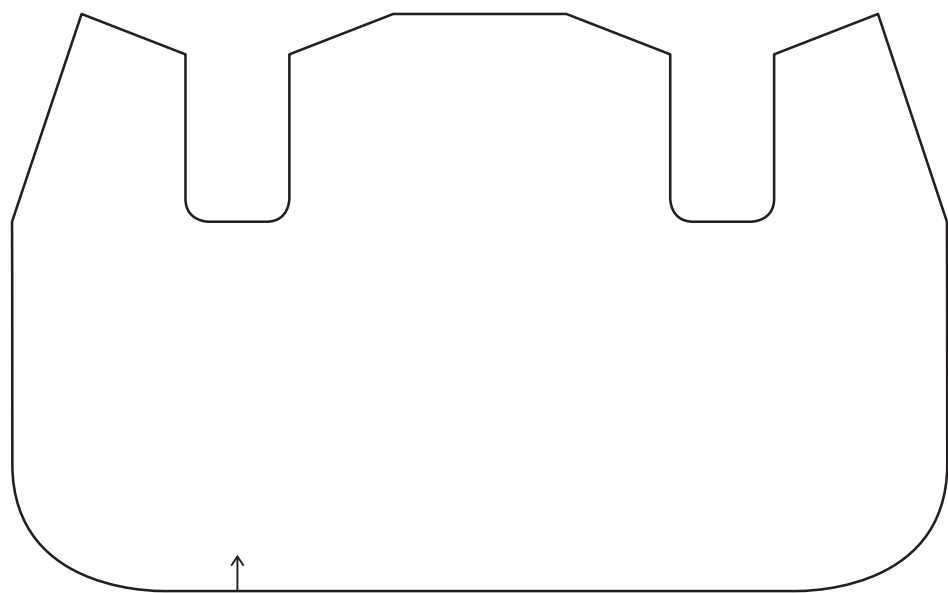
GAUGE

16 stitches & 24 rows/rounds = 4" in stockinette stitch and yarn held double, after blocking
 14 stitches & 44 rows/rounds = 4" in Brioche Stitch and yarn held double, after blocking

DESIGN DETAILS

3-piece construction, partially seamless, set-in sleeve, body and sleeves worked circularly to underarm, fully-fashioned yoke shaping, brioche stitch motifs highlight shoulder and back shaping, cozy cowl neck, long sleeves, doubled cuff (optional), single rib hem and cuff, tubular cast ons and bind offs

CLICK THE PHOTO ABOVE TO PURCHASE PATTERN



HARTFORD

by Julie Hoover



FINISHED DIMENSIONS

38½ (42, 45¼, 48¾, 52, 55½)" circumference at bust, closed

Intended ease: + 6-8"

Sample shown is size 42" with + 9" ease on model (shown with slightly more ease than suggested)

MATERIALS

9 (10, 11, 11, 12, 13) skeins of Brooklyn Tweed *Shelter*

Photographed in color *Wool Socks*

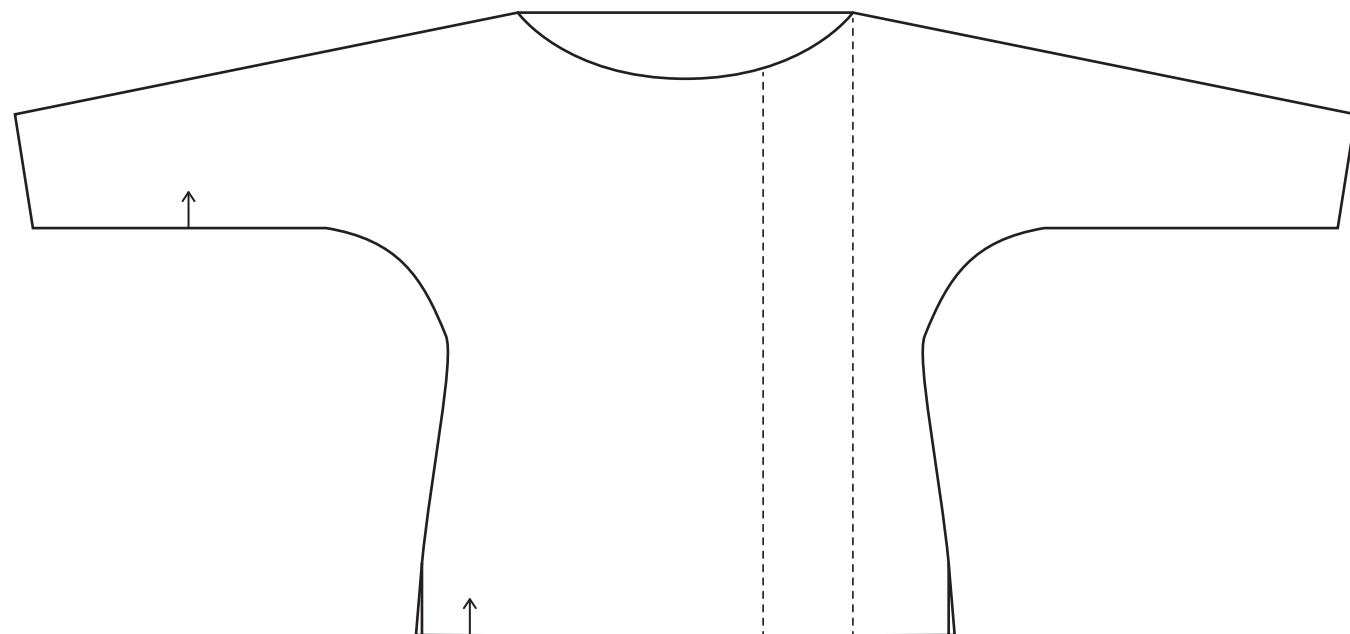
GAUGE

19 stitches & 34 rows = 4" in Slipped Stitch Rib Pattern, after blocking

DESIGN DETAILS

3-piece construction, pieces worked flat from the bottom up, set-in sleeve, all-over slip stitch "float" pattern, 2x2 rib cuffs are picked up and worked down from finished sleeve, 2x2 band picked up and knit circularly around cardigan opening, wooden toggle closures, v-neck, curved front hems, oversized fit

CLICK THE PHOTO ABOVE TO PURCHASE PATTERN



IDLEWILD

by Julie Hoover



FINISHED DIMENSIONS

33 (36³/₄, 40¹/₂, 44¹/₄, 48, 51³/₄)" circumference at bust, seamed

Intended Ease: + 3-4"

Sample shown is size 40¹/₂" with +7¹/₂" ease on model (for oversized fit)

MATERIALS

8 (8, 9, 10, 11, 12) skeins of Brooklyn Tweed *Shelter*

Photographed in color *Truffle Hunt*

GAUGE

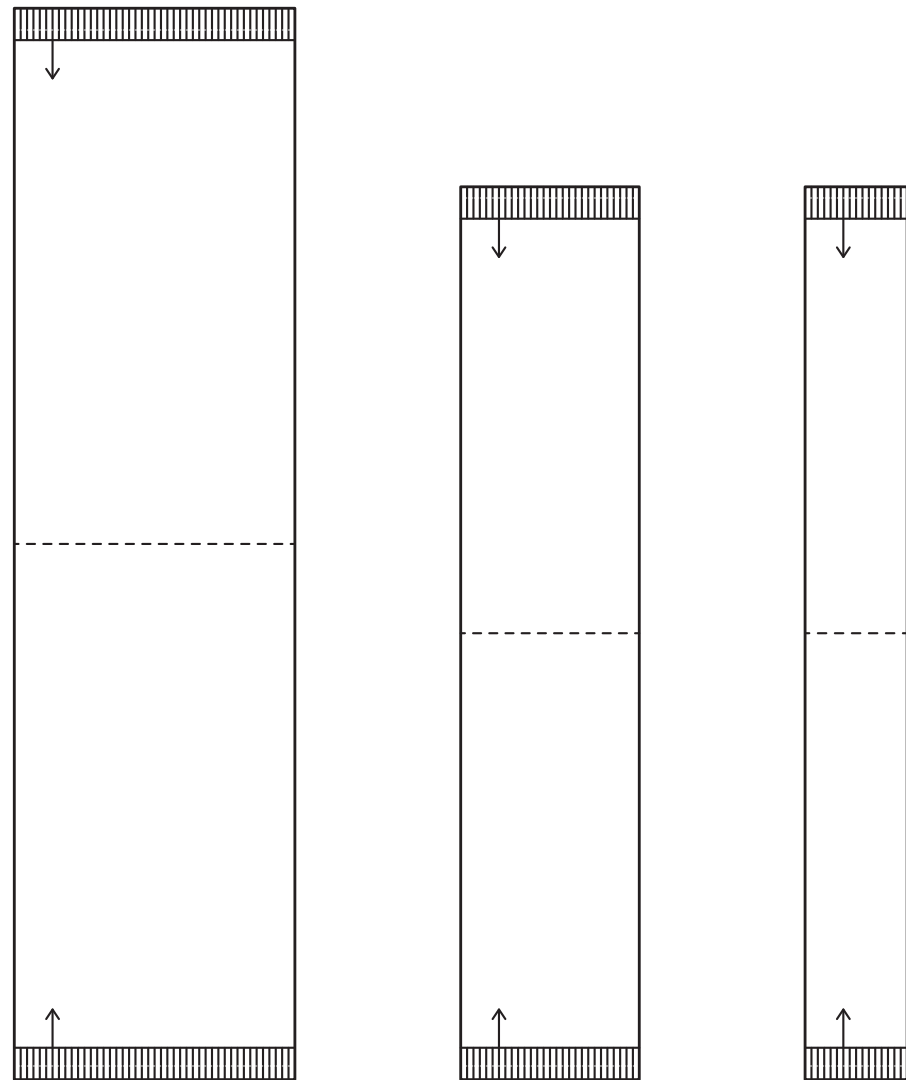
17 stitches & 28 rows = 4" in stockinette stitch, after blocking

18-stitch Cable Panel measures 3³/₄" wide, after blocking

DESIGN DETAILS

2-piece construction, front and back worked flat from the bottom up and grafted together along shoulder seam, dolman silhouette, slightly oversized, asymmetric twisted-stitch cable insertion on front and back, boat neck, side vents, shallow 1x1 ribbed neckband

CLICK THE PHOTO ABOVE TO PURCHASE PATTERN



AFTON

by Jared Flood



FINISHED DIMENSIONS

Regular Scarf (Wide Scarf, Wrap); 7¼ (13, 22)'' wide; 69½ (69½, 84)'' long
(measurements taken from relaxed fabric after wet-blocking)

MATERIALS

4 (8) skeins of Brooklyn Tweed *Loft* for Regular (Wide) Scarf; 10 skeins of Brooklyn Tweed *Shelter* for Wrap
Photographed in colors *Homemade Jam* (Regular Scarf), *Fossil* (Wide Scarf), and *Soot* (Wrap)

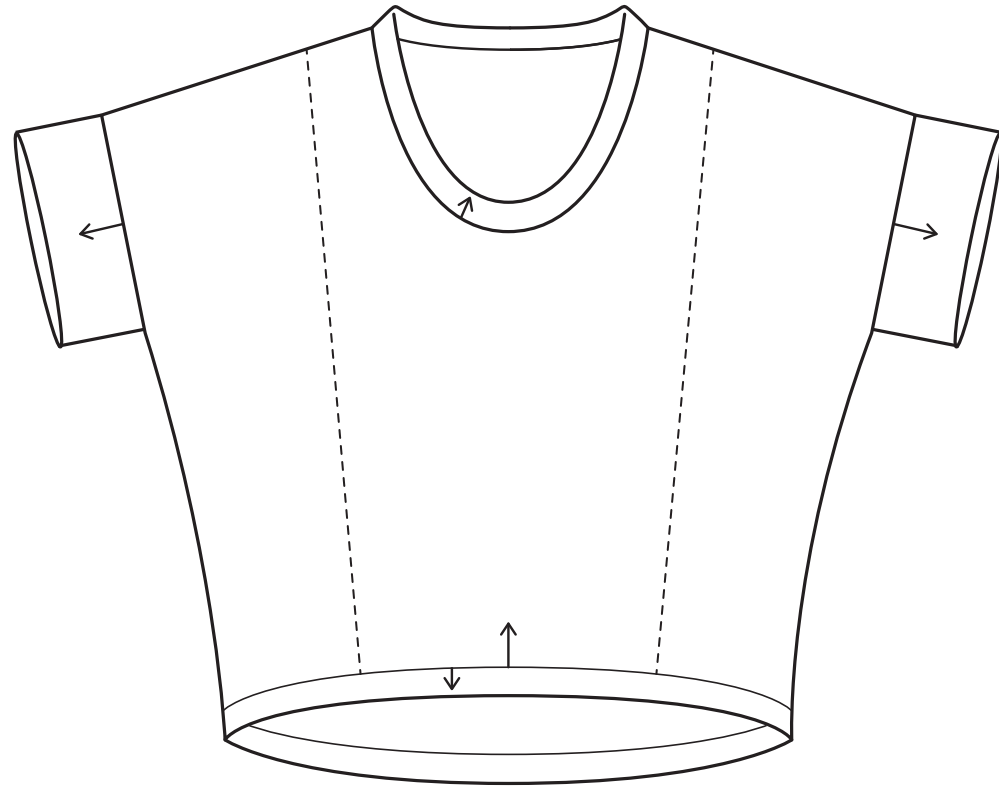
GAUGE

Scarves: 25 stitches & 31¼ rows = 4'' in cable pattern from Chart and *Loft* held double, after blocking
Wrap: 20½ stitches & 24 rows = 4'' in cable pattern from Chart and 1 strand of *Shelter*, after blocking

DESIGN DETAILS

2-piece construction, pieces knit flat from ribbed hems toward scarf center, halves grafted together during finishing, all-over lace and cable motif, "broken rib" motif on hem, corded selvedge along side edges, tubular cast on, three size options included

CLICK THE PHOTO ABOVE TO PURCHASE PATTERN



JULES

by Julie Hoover



FINISHED DIMENSIONS

42¾ (46½, 50¼, 54, 58, 61¾)" circumference at bust, seamed

31½ (35¼, 39, 42¾, 46½, 50¼)" circumference at high hip, seamed

Garment is oversized through the bust and can be worn with varying amounts of ease. Choose a size that will accommodate your high hip measurement and give you desired bust ease.

Sample shown is size 50¼" bust with + 17¼" ease at bust on model

MATERIALS

6 (6, 7, 8, 8, 9) skeins of Brooklyn Tweed *Shelter*

Photographed in color *Fossil*

GAUGE

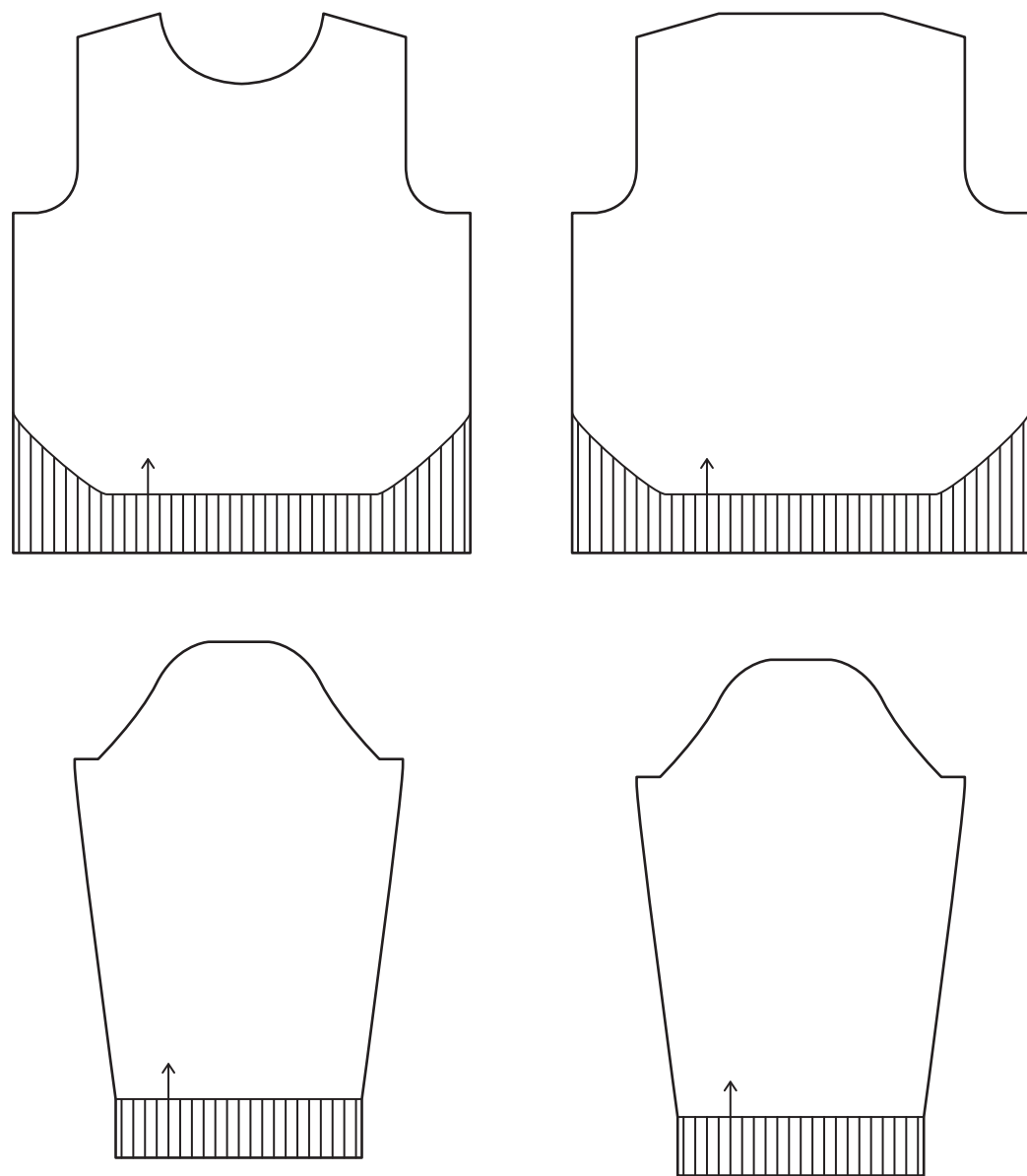
17 stitches & 28 rows = 4" in reverse stockinette stitch, after blocking

DESIGN DETAILS

2-piece construction, worked flat from the bottom up, cocoon silhouette, tilted hem, vertical cables travel outward towards shoulder for flattering fit, scoop neck, shallow 1x1 ribbed hem and neckband,

2x2 ribbed sleeve cuff, optional exposed seam details

CLICK THE PHOTO ABOVE TO PURCHASE PATTERN



STONECUTTER

by Michele Wang



FINISHED DIMENSIONS

36¼ (38½, 41½, 43¾, 47, 49, 52¼)" circumference at bust, seamed

Intended Ease: + 3½-5½"

Sample shown is size 38½" with + 5½" ease on model

MATERIALS

10 (11, 12, 13, 14, 15, 16) skeins of Brooklyn Tweed *Shelter*

Photographed in color *Snowbound*

GAUGE

30 stitches & 32 rows = 4" in cabled pattern from Chart, after blocking

8-stitch panel from Chart B measures 1" wide; 18-stitch panel from Chart C measures 2½" wide;

58-stitch panel from Chart D measures 7¾" wide

20 stitches & 32 rows = 4" in reverse stockinette stitch, after blocking

DESIGN DETAILS

4-piece construction, worked flat from the bottom up, set-in sleeve, dramatic central cable, diagonal cable shaping details flow from ribbed hem on body, no waist shaping, relaxed fit, crew neck with rolled edge, 2x2 ribbed cuffs and hem, tubular cast ons

CLICK THE PHOTO ABOVE TO PURCHASE PATTERN



YARN INFORMATION



Our Targhee-Columbia wool is grown along the beautiful plains of Johnson County, Wyoming.

Following shearing season each spring, the raw wool is spun in the historic mill town of Harrisville, New Hampshire, where woolen yarns have been manufactured since 1794.

We are proud to bring handknitters high-quality wool yarns that are entirely produced on US soil.



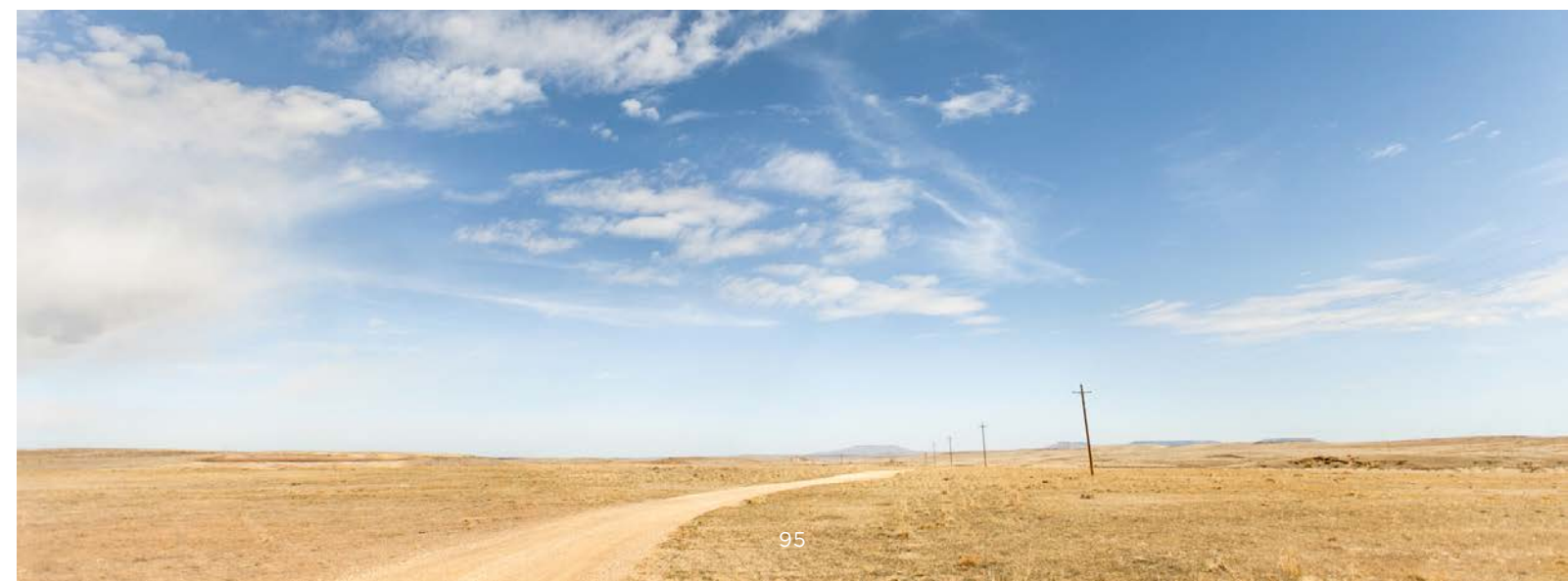
50 gram skein/140 yards
4-5 stitches per inch
woolen 2-ply construction
\$12.50

click thumbnail to purchase
available in 32 colors



50 gram skein/275 yards
6-9 stitches per inch
woolen 2-ply construction
\$14.50

click thumbnail to purchase
available in 32 colors



PAINT BOX

Our 32 custom heathers are blended from 11 base solids to achieve a unique cross-range harmony



- 1 Homemade Jam
- 2 Long Johns
- 3 Camper
- 4 Wool Socks
- 5 Embers
- 6 Hayloft
- 7 Sap
- 8 Fauna
- 9 Foothills
- 10 Tent
- 11 Birdbook
- 12 Button Jar
- 13 Artifact
- 14 Faded Quilt
- 15 Stormcloud
- 16 Almanac
- 17 Old World
- 18 Thistle
- 19 Plume
- 20 Blanket Fort
- 21 Postcard
- 22 Fossil
- 23 Woodsmoke
- 24 Barn Owl
- 25 Nest
- 26 Truffle Hunt
- 27 Meteorite
- 28 Pumpnickel
- 29 Cast Iron
- 30 Soot
- 31 Sweatshirt
- 32 Snowbound



DESIGN TEAM



JULIE HOOVER

Dedicated to clean, sophisticated, contemporary design, Julie recently retired her freelance art director business to focus on her long-time passion – playing with textiles.

She's also a serious foodie and photo taker. Keep up with her at www.juliehoover.com.

MICHELE WANG

Based in New York City, Michele joined the Brooklyn Tweed Design Team in the Fall of 2011.

In her design work she likes to explore the balance between comfort and trend. Her garments have been featured in *Vogue Knitting*.

Follow Michele on her web site at www.mishi2x.com.

JARED FLOOD is owner and creative director at Brooklyn Tweed. Having received his education in 2D design and photography, he began designing knitwear in 2007 and developing yarns in 2009.

These days he spends time designing for and heading operations at Brooklyn Tweed.

VÉRONIK AVERY is the founder of St-Denis Yarns and the author of *Knitting Classic Style* and *Knitting 24/7*.

Her work has appeared in countless publications, including knitting books such as *Sock Yarn Studio* (Lark), *Weekend Knitting* and *Handknit Holidays* (STC), several titles from Interweave Press, magazines (*Interweave Knits*, *Knitscene*, *Vogue Knitting*, *Woman's Day*), and online (*Knitty* and *Twist Collective*).



PRODUCTION TEAM

Art Direction & Photography	Jared Flood
Wardrobe Styling	Stephanie Gelot
Photoshoot Producer	Jess Morphew
Models	Nyamuoch Girwath Anna Hurley
Hair & Makeup	Yuko Takahashi
Look Book Design/Illustration	Jared Flood
Pattern Layout	Julie Hoover
Technical Editing	Christine Craig Robin Melanson
Copy Editing/Proofing	Bristol Ivy Leila Raabe
Sample & Test Knitting	Christine Craig Larisa Phipps Melissa Walters
Project Coordination	Bristol Ivy Leila Raabe
Fulfillment	Ethan MacDonald
Location	Arbour House West Saugerties, NY www.airbnb.com/rooms/165525

HAPPY FALL

Here's wishing you a warm and wool-filled knitting season!

Keep up with us during the colder months by following our Facebook, Twitter or Instagram pages for project ideas and inspiration.

We love hearing your comments, questions and concerns – please don't hesitate to drop us a line.

Most importantly, thank you for your continued support of what we do here.



