

# ARBOR

## *Color Stories*



**VINTNER:** The deep and lingering red of an Oregon pinot noir swirled in the glass.



**ALIZARIN:** Crimson, a cooler and less impulsive red than *Firebrush*.



**BUTTE:** A foxy rust hue like iron-rich soils — leans redder in *Peerie* and more orange in *Arbor*.



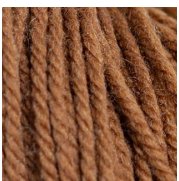
**MESA:** The rosy pink of unfired terracotta.



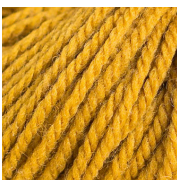
**ARABESQUE:** A sophisticated greyed mauve of middle value.



**DEGAS:** Pale beige with a blush of pink. Complements many of our deeper hues and shades in colorwork.



**BURNISHED:** Sophisticated olive-brown, like a new pair of Italian leather shoes.



**KLIMT:** The rich ochre gold of willow leaves in autumn. Inspired by the paintings of Gustav Klimt's "golden phase."



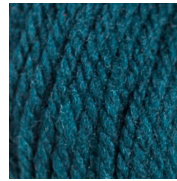
**TINCTURE:** Grassy olive oil, greener and more vivid than *Klimt*.



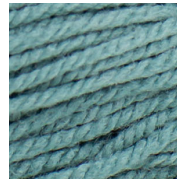
**RAINIER:** A glacial, shaded, serene blue, named for Washington's tallest peak.



**DORADO:** The deep green of the ocean near forested shores.



**TREEHOUSE:** A saturated spruce green that leans toward teal.



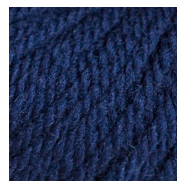
**LOVAT:** The muted blue-green of an old Scottish tweed suit.



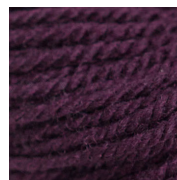
**SPRUCE:** The hazy blue green of a misty forest, close kin to Lovat but darker in hue.



**SASHIKO:** Saturated natural indigo, inspired by Japanese textiles.



**FLEET:** Classic pea-coat navy. Darker in *Peerie* than it is in *Arbor*.



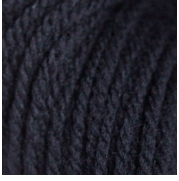
**COBBLER:** A jammy reddish purple like blackberry pie.



**BLACK FIG:** Warm blackened purple, an intriguing alternative to black or charcoal that pairs well with neutrals. This shade looks dark purple in natural light, more faded black in artificial light.



**PORTER:** Faded black denim, a lived-in alternative to true black.



**KETTLE:** Labrador black, pure and basic.



**HUMPBACK:** A complex dark grey faintly warmed with brown.



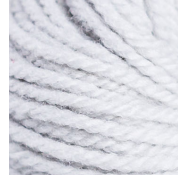
**HERON:** A cool mid-grey like rain clouds.



**HAMMOCK:** Natural sheep's white, warm and creamy.



**DRIFTWOOD:** Pale, weathered beige grey. Distinctly warm.



**THAW:** Cool, silvery white.

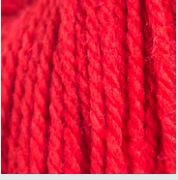


**NORWAY:** Sea ice. This palest blue is shaded with a wash of grey.

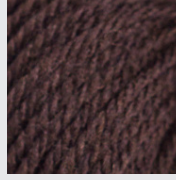


**SEAGLASS:** Pale mint, ocean tumbled flotsam.

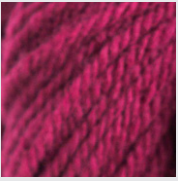
## RETIRED COLORS



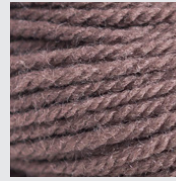
**FIREBRUSH:** Intense, vibrant primary red.



**LOAM:** The lively, rich brown of drinking chocolate.



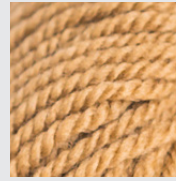
**POTION:** The purpled red of cherry juice.



**CAROB:** Velvety taupe with both warm and cool pigments.



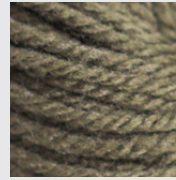
**NIGHTFALL:** Dusky plum bloom. *Morandi's* dark and mysterious cousin.



**CRUMB:** Tawny, golden brown like lion's hide.



**MORANDI:** Warm violet grey-brown, created in homage to Italian painter Giorgio Morandi's masterful tonal still lifes.



**PARKA:** Earthy loden green, anything but drab.



**GALE:** Light grey with a tinge of lichen green, like French clay.



**WREATH:** A glossy emerald green like ivy leaves.