

# ARBOR LODGE

## COLOR STORIES



**NATURAL:** Sun-warmed sourdough, creamy undyed fleece.



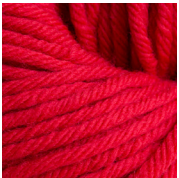
**POLLEN:** The chartreuse center of a flower, luminous yellow-green.



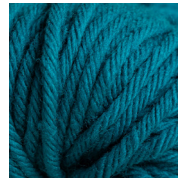
**BARELY THERE:** The horizon's first hint of dawn, palest pink.



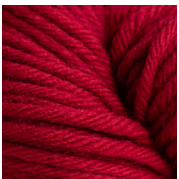
**CARGO:** Earthy loden green, anything but drab.



**SNOCONE:** Zingy cherry red, tart and sweet.



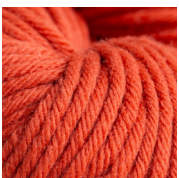
**TAILFEATHER:** Shimmering plumage, lively mallard green-blue.



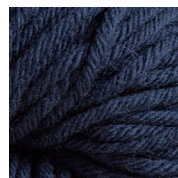
**COTTAGE:** Rich rust-red, warm and welcoming.



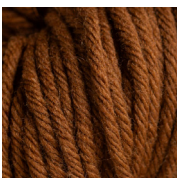
**CADET:** Electric Mondrian blue, intense ultramarine.



**KILN:** Ruddy earthenware, banked coals, glowing autumnal orange.



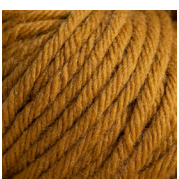
**KNAPSACK:** Crisp navy canvas, deep inkwell blue.



**BURNISHED:** Weathered bronze, well-worn leather, warm olive-brown.



**PEBBLE:** Rugged slate roofs, moody azure-tinted gray.



**KLIMT:** Willow leaves in autumn, sunlit ochre-gold.