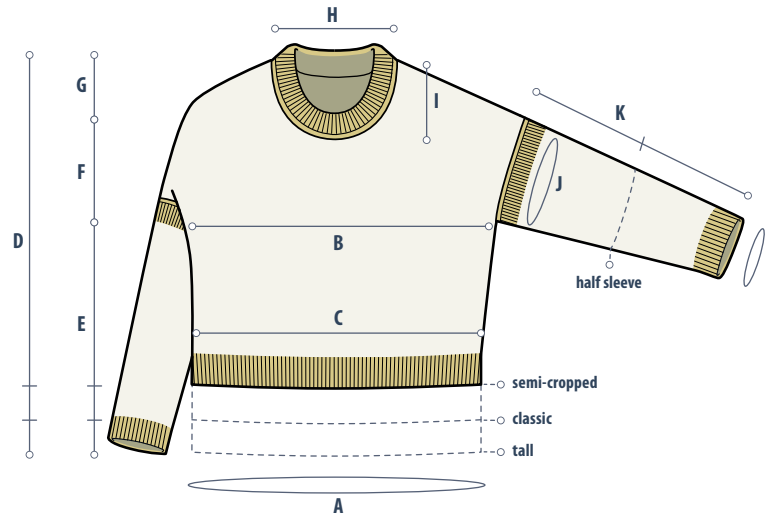


Schematic



		sizes											
		1	2	3	4	5	6	7	8	9	10	11	
A	Finished Chest Circumference, After Seaming	37¼	41¼	45¼	49¼	53¼	57¼	61¼	65¼	69¼	73¼	77¼	in
		94.5	105	115	125	135.5	145.5	155.5	165.5	176	186	196	cm
B	Chest Width (Pre-Seaming), Below Armhole Shaping	19	21	23	25	27	29	31	33	35	37	39	in
		48.5	53.5	58.5	63.5	68.5	73.5	78.5	84	89	94	99	cm
C	Hem Width (Pre-Seaming)	17½	19½	21½	23½	25½	27½	29½	31½	33½	35½	37½	in
		44.5	49.5	54.5	59.5	65	70	75	80	85	90	95.5	cm
D	Total Garment Length, Semi-Cropped	20½	20½	20¾	20¾	21	21¼	21¼	21½	21¾	22	22	in
		52	52	52.5	52.5	53.5	54	54	54.5	55	56	56	cm
	Total Garment Length, Classic	22¼	22½	22¾	22¾	23	23¼	23¼	23½	23¾	24	24	in
	Total Garment Length, Tall	24¼	24½	24¾	24¾	25	25¼	25¼	25½	25¾	26	26	in
		61.5	62	63	63	63.5	64	64	65	65.5	66	66	cm
E	Body Length from Cast-On to Underarm, Semi-Cropped	10½	10¼	9¾	9½	9½	9	9	9	8¾	8½	8¼	in
		26.5	26	25	24	24	23	23	23	22	21.5	21	cm
	Body Length from Cast-On to Underarm, Classic	12½	12¼	11¾	11½	11½	11	11	11	10¾	10½	10¼	in
32		31	30	29	29	28	28	28	27.5	26.5	26	cm	
Body Length from Cast-On to Underarm, Tall	14½	14¼	13¾	13½	13½	13	13	13	12¾	12½	12¼	in	
	37	36	35	34.5	34.5	33	33	33	32.5	32	31	cm	
F	Armhole Depth	6	6½	7	7¼	7½	8	8	8¼	8¾	9	9¼	in
		15	16.5	18	18.5	19	20.5	20.5	21	22	23	23.5	cm
G	Shoulder Depth	3¾	3¾	4	4	4	4¼	4¼	4¼	4¼	4½	4½	in
		9.5	9.5	10	10	10	11	11	11	11	11.5	11.5	cm
H	Neck Width	7	7½	7¾	8¼	8½	9	9¾	10¼	10½	10½	11	in
		18	19	19.5	21	21.5	23	25	26	26.5	26.5	28	cm
I	Front Neck Depth	4¼	4½	4½	4½	4¾	4¾	4¾	5	5	5	5	in
		11	11.5	11.5	11.5	12	12	12	12.5	12.5	12.5	12.5	cm
J	Upper Sleeve Width (Pre-Seaming)	12¾	13¾	14½	15¾	16¾	17½	18½	19¾	20¾	21¾	23	in
		32.5	35	37	40	42.5	44.5	47	50	52.5	55	58.5	cm
K	Total Sleeve Length, Long Sleeve	15½	15½	15¾	16	16½	16¼	16½	17	17¼	17	17½	in
		39.5	39.5	40	40.5	42	41.5	42	43	44	43	44.5	cm
	Total Sleeve Length, Half Sleeve	9	9	9¼	9½	10	9¾	10	10½	10¾	10½	11	in
		23	23	23.5	24	25.5	25	25.5	26.5	27.5	26.5	28	cm
L	Cuff Width (Pre-Seaming), Long Sleeve	10½	10¾	10¾	11¼	11¼	12	12½	12¾	12¾	13¼	13½	in
		26.5	27.5	27.5	28.5	28.5	30.5	32	32.5	32.5	33.5	34.5	cm
Cuff Width (Pre-Seaming), Half Sleeve	12	12½	13¼	14½	15¼	16	17¼	18½	19¼	20½	21½	in	
	30.5	32	33.5	37	38.5	40.5	44	47	49	52	54.5	cm	