

# QUARRY

## *Color Stories*



**CITRINE:** Cast bronze. *Citrine* is a cool, swampy ochre muddled with olive, lime, and rust, the lightest member of a yellow-green gradient with *Sulphur* and *Serpentine*.



**LAZULITE:** Deep sea diving. *Lazulite* is blackened navy with a pinch of lavender and teal.



**FLINT:** Douglas fir bark. *Flint* is a strong middle brown grizzled with white and camel and tinted with black, shot with the occasional streak of lichen yellow.



**MOONSTONE:** Snow shadows. Grey white with a touch of royal blue, *Moonstone* is a cool and tranquil pale hue.



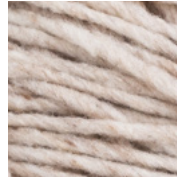
**GARNET:** Spice market. This deep chili red is lightly shaded with black and purple, then toasted to festive perfection with autumnal gold, rust, and brown.



**OBSIDIAN:** Lava glass. *Obsidian* is black marbled with glints of grey and white, which enliven the fabric and help to reveal stitch work.



**GEODE:** Foggy mornings on the coast. *Geode* is a twilight grey striated with royal blue and soft lilac. The merest hint of camel gives it a faint glow.



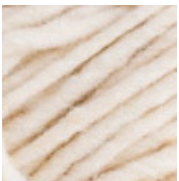
**SANDSTONE:** Whole-wheat flour. *Sandstone* is a warm white seasoned with brown and a dash of camel for mellow glow.



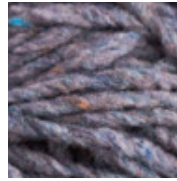
**GRANITE:** Gulls on the winter sea. A steady, enduring, medium grey, *Granite* is very similar to *Sweatshirt* in the *Loft* and *Shelter* palette.



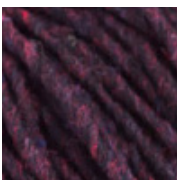
**SERPENTINE:** A forest watering hole. *Serpentine* is murkiest dark olive with subtle hints of navy, teal, yellow, and rust.



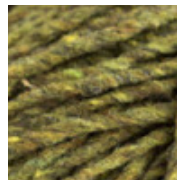
**GYP SUM:** The spoonful of cream at the top of the milk bottle. *Gypsum* is a warm white with a friendly glaze of camel.



**SLATE:** Welsh rooftops. *Slate* is a moody, muddy blue grey with streaks of camel and rust.



**HEMATITE:** Blackberry pie. *Hematite* reads as the darkest possible magenta; it's composed of black lit with dashes of scarlet and just a hint of lavender and navy.



**SULPHUR:** Parrot feathers. A lively, mid-value olive hue, *Sulphur* is laced with yellow, lime, brown, and the occasional fleck of navy.



**LAPIS:** Summer skies. *Lapis* is a blend of three blues tempered with black, brighter than *Almanac* in the *Loft* and *Shelter* lines, but still close kin.



**FOSSIL:** Stags' velvety antlers. *Fossil* is white warmed with a whisper of brown. Our palest neutral, *Fossil* begins our brown gradient, shading gradually into *Woodsmoke*, *Barn Owl*, *Nest*, and *Pumpnickel*.