



FEEL

A beautiful soft wool and alpaca marle felt, ideal for upholstery + acoustic drapery

INSTYLE

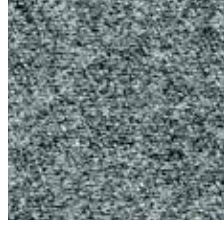
FEEL



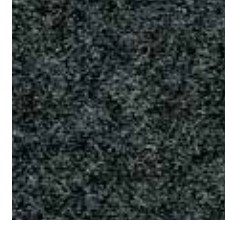
FEEL Young Again



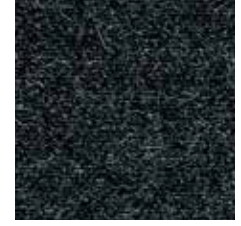
FEEL Awesome



FEEL Respected



FEEL Confident



FEEL Invincible



FEEL Inspired



FEEL Calm



FEEL Fabulous



FEEL Amazing



FEEL Beautiful



FEEL Wonderful



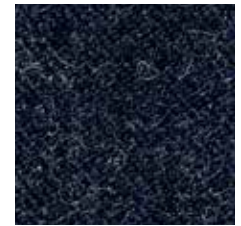
FEEL Sophisticated



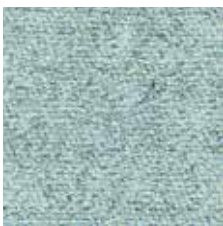
FEEL Precious



FEEL Chilled



FEEL Secure



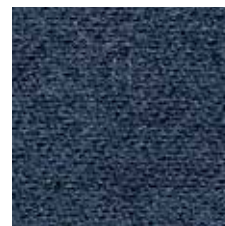
FEEL Playful



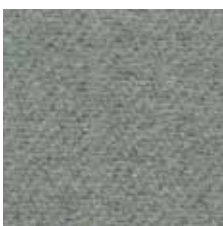
FEEL Lucky



FEEL Great



FEEL Liberated



FEEL Nostalgic



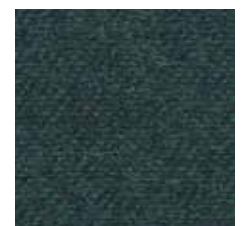
FEEL Thrilled



FEEL Free



FEEL Zen



FEEL Splendid

Product may vary in colour due to the nature of the media
Please refer to website for current colour range

FEEL



FEEL Elated



FEEL Alive



FEEL Unique



FEEL Satisfied



FEEL Positive



FEEL Peachy



FEEL At Home



FEEL Grounded



FEEL Refined



FEEL Wanted



FEEL Optimistic



FEEL Daring



FEEL Adventurous



FEEL Up For It



FEEL Loved



FEEL Jubilant



FEEL Merry



FEEL Excited



COMPOSITION	65% Australian wool, 20% nylon, 15% alpaca	
WIDTH / WEIGHT	140cm / 418gsm	
PATTERN REPEAT	nil	
ROLL SIZE	50m approx.	
CARE CODE	CTA 1	
ABRASION Martindale AS2001.2.25	46,500	
CTA RATING	hc	HEAVY DUTY COMMERCIAL USE
SEAM SLIPPAGE AS2001.2.22	Warp 3.3mm Weft 5mm Note: All seams must be overlocked or secured to prevent the premature failure of the seam due to fraying	
PILLING Martindale IWS196	3-4	
LIGHTFASTNESS ISO 105 B02	5	
FIRE RATINGS AS/NZS 1530.3	Ignitability	13
	Spread of Flame	0
	Heat Evolved	1
	Smoke Developed	5
AS/NZS 3837	BCA Group	2
	Av. Specific Extinction Area	51.7 m ² /kg
ISO 5660.1	NZBC Group	2S
	Av. Specific Extinction Area	54.9m ² /kg
IMO Resolution A.625(16)	Sections 8.2 + 8.3:	Pass
Additional Fire Tests	California 117E, NFPA 260	UFAC
ACOUSTIC AS/ISO 354	NRC 0.8 - Acoustic drapery helps reduce unwanted reverberation whilst softening sound within a space	
APPLICATION	Upholstery seating, screen, wall panel, acoustic drapery	
PLEASE NOTE	Results from performance tests are guidelines only	

ENVIRONMENT

- 80% sustainable, rapidly renewable content
- Reduced water and energy consumption, recycling of waste
- FEEL is certified low VOC
- Wool absorbs indoor air contaminants, benefiting indoor air quality
- 80% biodegradable (natural fibre content) + recyclable

GREEN STAR

FEEL can contribute points to the following Green Star criteria:

- Stewardship Programs: FEEL can be reused or recycled through our Revive recycling program
- Low-VOC
- FEEL can be used on white furniture certified to Ecospecifier, AFRDI, ECNZ and GECA
- The Green Star Rating Tool states “Where at least 90% of an item’s mass is certified to a GBCA recognised standard, the item can be entered as a certified product at Level A, B or C.” Therefore any fabric can be used as fabrics are almost always under 10% by weight of a furniture item

LEED

FEEL can contribute points to the following LEED criteria:

- Bio-Based + Rapidly-Renewable Content (80%)
- Low-VOC
- Extended Producer Responsibility Recycling Program

WELL

FEEL can contribute to the following WELL criteria:

- Low VOC / VOC Reduction: FEEL is low VOC
- Toxic Material Reduction: FEEL is free of PFCs, flame retardants, phthalates and urea formaldehyde