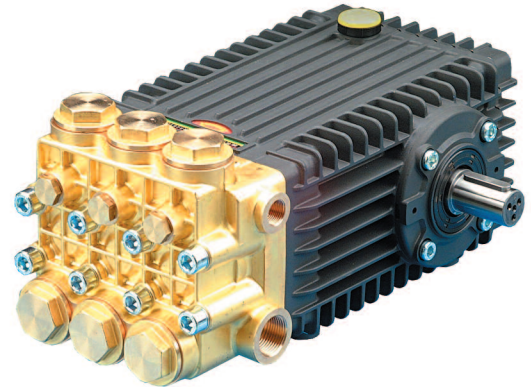


FEATURES

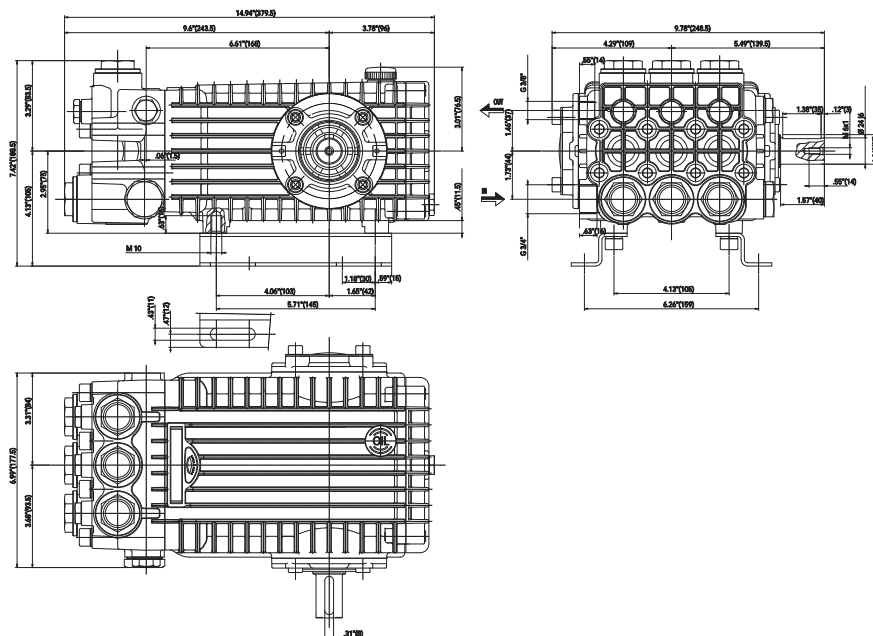
- Oversized roller bearings
- Fully anodized crankcase
- Innovative new seal design extends seal life
- New plunger design improves thermal shock resistance
- New valve cap improves hydrostatic performance



SPECIFICATIONS

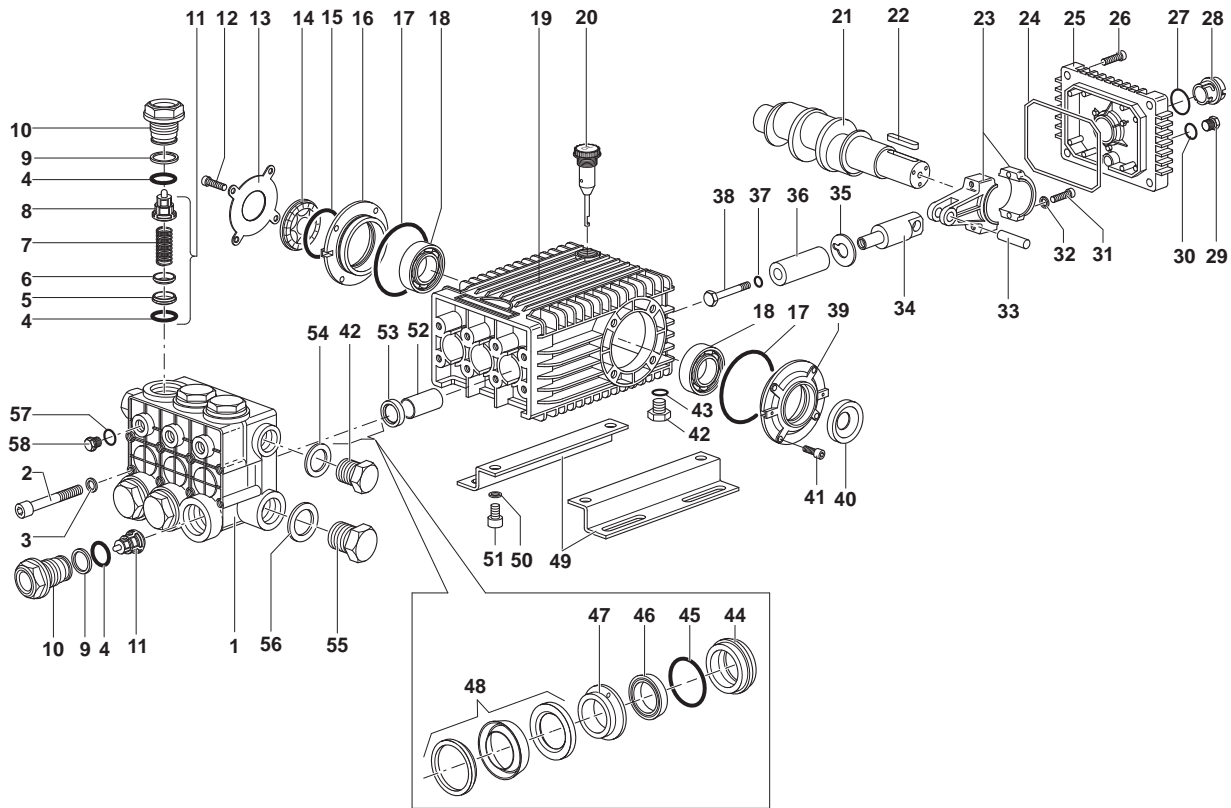
Pump Model	TSF2019	TSF2019 Alternate Spec	TSF2021	TSF2021 Alternate Spec	TSF2219	TSF2219 Alternate Spec	TSF2221	TSF2221 Alternate Spec
Maximum Volume	7.6 GPM	6.3 GPM	8.5 GPM	7.0 GPM	9.3 GPM	7.7 GPM	10.2 GPM	8.5 GPM
Maximum Discharge Pressure	3600 PSI				3000 PSI			
Horsepower	18.7 BHP	15.5 BHP	21 BHP	17.3 BHP	19.1 BHP	15.8 BHP	21 BHP	17.5 BHP
Maximum Pump Speed	1750 RPM	1450 RPM	1750 RPM	1450 RPM	1750 RPM	1450 RPM	1750 RPM	1450 RPM
Maximum Inlet Pressure	125 PSI							
Maximum Inlet Vacuum	9 ft. water / 7.9 in. Hg							
Plunger Bore (in / mm)	.787 in. / 20 mm				.866 in. / 22 mm			
Plunger Stroke (in / mm)	.748 in. / 20 mm		.826 in. / 21 mm		.472 in. / 19 mm		.826 in. / 21 mm	
Oil Capacity	31.0 oz.							
Maximum Fluid Temperature	165° F							
Inlet Port Thread	3/4"-14 BSP-F							
Discharge Port Thread	3/8"-19 BSP-F							
Shaft Diameter (in / mm)	.945 in. / 24 mm							
Weight	40.7 lbs / 18.5 kg							
Dimensions	13.27" x 9.6" x 6.23"							

DIMENSIONAL DRAWING



66 Series, TSF

GENERAL PUMP *A member of the Interpump Group*



PARTS LIST

POS.	PART NO.	DESCRIPTION	QTY.	POS.	PART NO.	DESCRIPTION	QTY.	POS.	PART NO.	DESCRIPTION	QTY.
1	66120041	Manifold 20 mm	1	21	66020435	Crankshaft, 21 mm Stroke	1	41	99303900	Screw M8 x 16	4
2	99380100	Headbolt M10 x 90	8	22	91489200	Key	1	42	98210000	Plug 3/8 x 13	2
3	96710400	Washer M10	8	23	66030001	Connecting Rod	3	43	90383300	O-ring	1
4	90385700	O-ring	12	24	90392200	O-ring	1	44	66080170	Seal Retainer 22mm	3
5	36203366	Valve Seat	6	25	66160000	Cover, Crankcase	1	45	66080070	Seal Retainer 20mm	3
6	36203476	Valve Poppet	6	26	99188400	Screw M6 x 20	4	46	90361600	O-ring	3
7	94738800	Valve Spring	6	27	90405100	O-ring	1	47	90271500	LP Seal 22mm	3
8	36203551	Valve Guide	6	28	63210051	Sightglass, Bayonet style	1	48	90269000	LP Seal 20mm	3
9	90516500	Anti-ext ring	6	29	98204100	Plug 1/4 x 9	1	49	66216170	Intermediate Ring 22mm	3
10	66130041	Valve Cap	6	30	701013	O-ring	1	50	66216070	Intermediate Ring 20mm	3
11	36712701	Valve Assy., Complete	6	31	99309900	Screw M8 x 35	6	51	90271700	HP Seal 22mm	3
12	99306900	Screw M8 x 25	4	32	96701400	Locking Washer M8	6	52	90269200	HP Seal 20mm	3
13	66150274	Cover	1	33	97740500	Wrist Pin	3	53	90162500	Seal, Plunger Rod	3
14	44211801	Sightglass	1	34	66050064	Piston Guide	3	54	96738000	Gasket, Aluminum 3/8"	1
15	90409700	O-ring	1	35	96710100	Flinger Washer	3	55	98226500	Plug 3/4" x 16	1
16	66150122	Side Cover	1	36	66040109	Plunger 22 mm	3	56	96770000	Gasket, Aluminum 3/4"	1
17	701147	O-ring	2	37	66040009	Plunger 20 mm	3	57	701013	O-ring	3
18	91838000	Bearing	2	38	90358400	O-ring	3	58	98204300	Plug 1/4" x 13	3
19	66010022	Crankcase	1	39	66219566	Plunger Bolt	3				
20	98210600	Dipstick, vented	1	40	66150022	Side Cover, PTO	1				
21	66020035	Crankshaft 19 mm Stroke	1		90164800	Seal, Shaft	1				

REPAIR KITS

KIT NO.	K02	K03	K169	K170 (20mm)	K171 (20mm)	K172 (22mm)	K173 (22mm)
POS. NO's INCLUDED IN KIT	53	40	4, 5, 6, 7, 8 (11)	46, 48	44, 45, 46, 47, 48	46, 48	44, 45, 46, 47, 48
NUMBER OF ASSEMBLIES IN KIT	3	1	6	3	1	3	1
NUMBER OF CYLINDERS KIT WILL SERVICE	3	N/A	3	3	1	3	1

TORQUE SPECS*

POS.	Nm	Ft/lb
2	45	33.2
10	130	95.9
12	20	14.8
26	10	7.4
29	20	14.8
31	20	14.8
38**	20	14.8†
41	20	14.8
42	40	29.5
51	40	29.5
55	70	51.6
58	40	29.5

* Decrease torque by 20% if threads are lubricated

** Use Loc-Tite 542 or similar

