

# OUTBACK KITTERS

RAM 2500/3500  
ADVENTURE RAILS  
INSTALLATION INSTRUCTIONS

## INSTRUCTIONS

DIFFICULTY



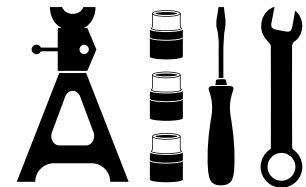
## IN THE BOX

TIME NEEDED: 5 HOURS

- 6x Roof mounting brackets
- 1x LHS adventure rail backbone
- 1x RHS adventure rail backbone
- 8x Cross rails
- 1x Wind deflector
- 1x Wind deflector bolt kit
- 1x Adventure rail bolt kit

## TOOLS REQUIRED

- Drill, Drill bits
- Drill Stop
- Step Drill
- Nutsert Tool
- Air Blower
- Tape measure
- Caramel Wheel
- Ratchet or Battery Ratchet
- Various Sized Sockets
- Allen Key Set
- 13mm Spanner
- Sikaflex or Waterproof Sealant
- Sharp Scissors or Snips
- Air Saw or Hacksaw
- Paint/Rust Preventative Spray
- Plastic Trim Tool



1

**A)**  
Start by using a plastic trim tool to remove the roof channel trim on both sides.

*Refer figure 1.*

**NOTE:**  
These will need to be set aside for later fitment.

**B)**  
Choose any side of the vehicle and measure 350mm back from the edge of the windscreen and mark a line inside the roof channel.

*Refer figure 2 and 3.*



Figure 1



Figure 2

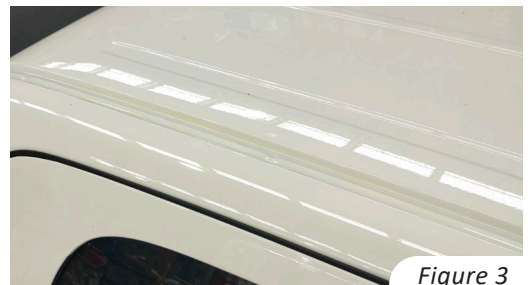


Figure 3

2

**A)**  
Start on any side of the car, measure 280mm back from the edge of the rubber windscreen trim and mark a line inside the roof channel.

*Refer figure 4 and 5.*

**B)**  
Place one of the roof rail brackets supplied in the kit against this line and then mark the drill holes as well as another line rearwards edge of the bracket to measure the distance for the next bracket.

*Refer figure 6.*



Figure 4



Figure 5



Figure 6

## 3

**A)**  
Measure 445mm back from the rearward bracket line previously marked in **step 2 - B)** and mark another line in the channel.

*Refer figure 7 and 8.*

**B)**  
Using the process from **step 2 - B)**, proceed to mark out the drill holes and another line on the rearwards edge of the bracket.

*Refer figure 9.*

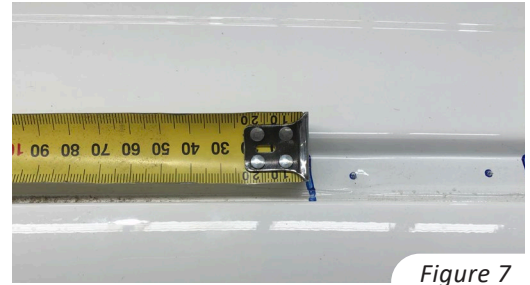


Figure 7

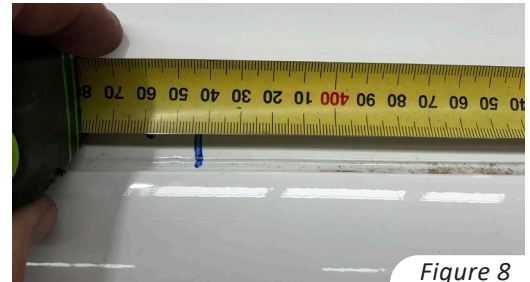


Figure 8



Figure 9

## 4

**A)**  
Measure 460mm back from the rearwards bracket line previously marked in **step 3 - B)**.

*Refer figure 10 and 11.*

**B)**  
Repeat the previous process to mark out the drill holes for the last bracket. Once this has been done, repeat this whole process from **step 2 to 4** on the other side of the car.



Figure 10



Figure 11

5

**A)**

Once both sides of the car have been marked, using a small sharp pilot hole drill bit, drill all the holes marked with the brackets in the previous steps.

*Refer figure 12.*

**NOTE:**

Be sure to use a drill stop with drill bits so as to not drill too far down into the channel and hit the wiring/airbag.

**B)**

Once the pilot holes have been drilled, drill all holes out to 10mm.

*Refer figure 13.*

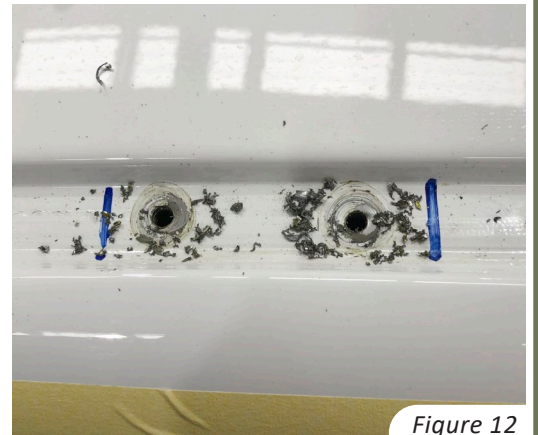


Figure 12

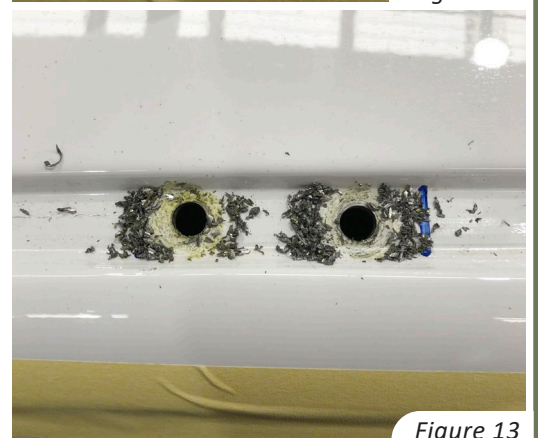


Figure 13

6

**A)**

Once all holes have been drilled, blow off any excess metal from the roof.

**B)**

Next use a rust preventative spray or paint the hole to prevent rust, be sure to wipe off any excess spray.

*Refer figure 14.*



Figure 14

7

Once all holes are dry, using a nutsert tool, proceed to install all 12 x 6mm thread nutserts which are provided in the kit on both sides of the vehicle.

*Refer figure 15 and 16.*



Figure 16



Figure 15

8

- A)** Once all nutserts have been installed, apply a small ring of silicone or Sikaflex around each nutsert.

*Refer figure 17.*

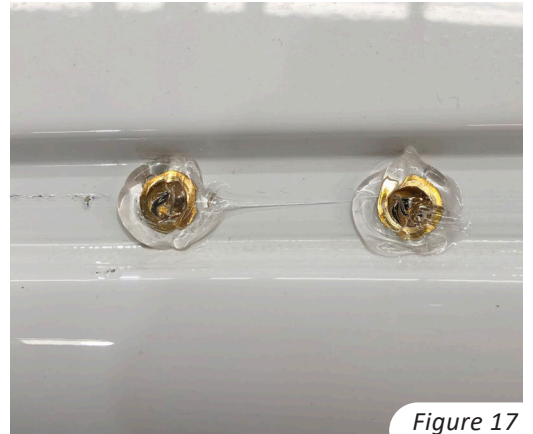


Figure 17

- B)** Proceed to install each roof mount bracket with supplied M6 bolts, M6 spring washers and M6 washers and tighten all bolts.

*Refer figure 18.*



Figure 18

9

- Proceed to install each roof mount bracket with supplied M6 bolts, M6 spring washers and M6 washers and tighten all bolts.

*Refer figure 19 and 20.*

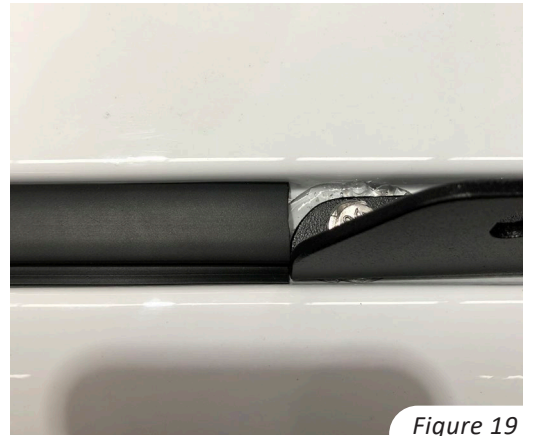


Figure 19



Figure 20

10

**A)**  
Using a nutsert tool, proceed to install all 12 x 6mm thread nutserts which are provided in the kit.

**B)**  
Using the spring nuts, M8 Allen key head bolts, M8 spring washers and M8 washers supplied in the bolt kit, proceed to loosely install the provided cross strengthening rails to the Adventure Rail Backbones.



Figure 21

**NOTE:** If installing a wind deflector shield then this will need to be done at the same time and mounts directly to the top.

11

**A)**  
With the help of a second person, proceed to lift the assembly onto the roof and secure the backbones to the roof channel brackets using M8 Allen key head bolts, M8 washers and M8 lock nuts supplied in the kit.

*Refer figure 22.*

**B)**  
Once all bolts are in, begin to tighten all roof rack bolts starting with the backbone mounting brackets first on each side and then tighten all the cross rail bolts.



Figure 22

12

Once all bolts are tight, wipe down the roof and roof rails to remove all marks and handprints.

**Installation of the  
RAM 2500/3500 Adventure Rails  
is now complete.**