

# OUTBACK KITTERS

## RAM 1500 DT ADVENTURE RAILS INSTALLATION INSTRUCTIONS

### INSTRUCTIONS

#### DIFFICULTY



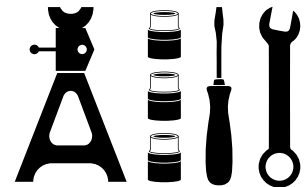
### IN THE BOX

TIME NEEDED: 5 HOURS

- 6x Roof mounting brackets
- 1x LHS adventure rail backbone
- 1x RHS adventure rail backbone
- 8x Cross rails
- 1x Wind deflector
- 1x Wind deflector bolt kit
- 1x Adventure rail bolt kit

### TOOLS REQUIRED

- Drill, drill bits
- Drill stop
- Step drill
- Nutsert tool
- Air blower
- Tape measure
- Ratchet or battery ratchet
- Various sized sockets
- Allen key set
- 13mm spanner
- Sikaflex or waterproof sealant
- Air Saw or Hacksaw
- Paint/rust preventative spray
- Plastic trim tool



1

Start by removing the roof channel trim on both sides using a plastic trim tool to gently pry up the clips.

Refer figure 1 and 2.

**NOTE:**

These will need to be set aside for later fitment.

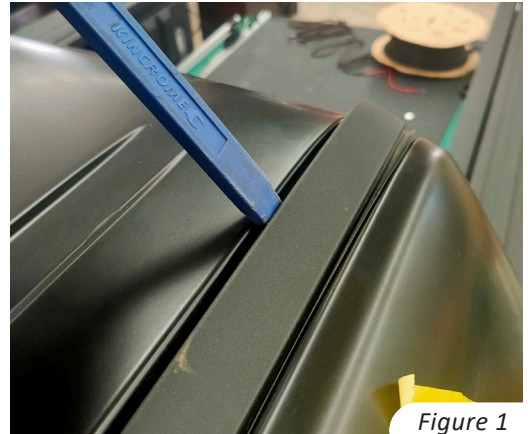


Figure 1

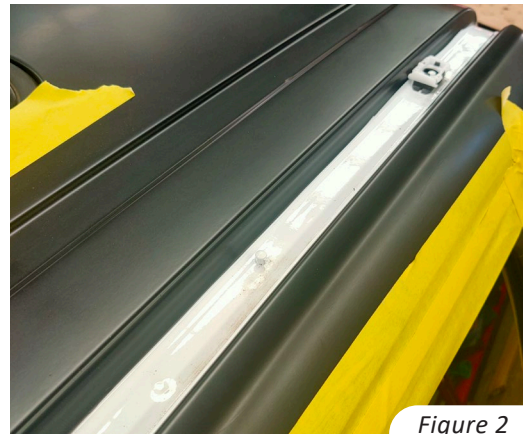


Figure 2

2

**A)** Choose any side of the vehicle and measure 350mm back from the edge of the windscreen and mark a line inside the roof channel.

Refer figure 3.

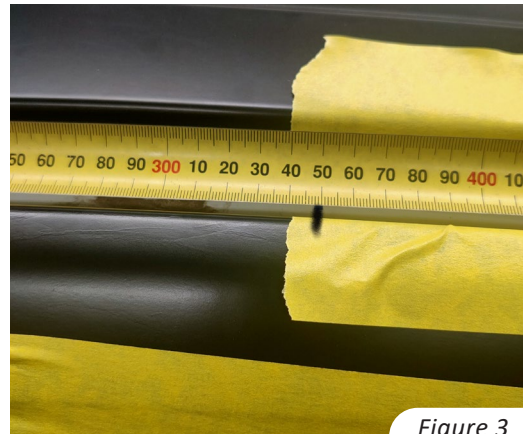


Figure 3

**B)** Place one of the roof rail brackets supplied in the kit against this line and then mark the drill holes as well as another line rearwards edge of the bracket to measure the distance for the next bracket.

Refer figure 4.

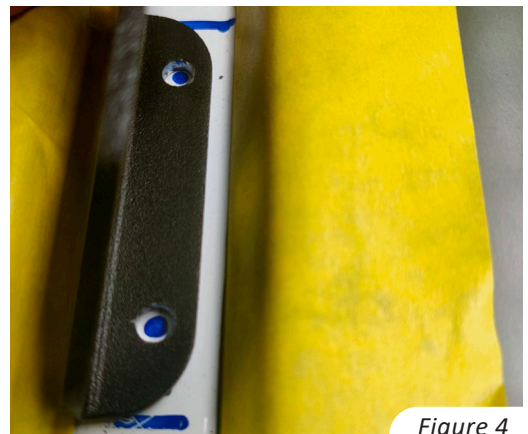


Figure 4

## 3

- A)** Measure 440mm back from the rearward bracket line previously marked in **step 2** and mark another line in the channel.

*Refer figure 5.*

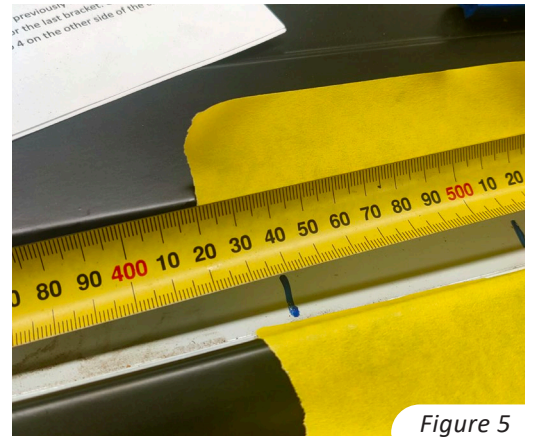


Figure 5

- B)** Using the process from **step 2**, proceed to mark out the drill holes and another line on the rearwards edge of the bracket.

*Refer figure 6.*



Figure 6

## 4

- A)** Measure 465mm back from the rearwards bracket line previously marked in **step 3**.

*Refer figure 7.*

- B)** Measure 465mm back from the rearwards bracket line previously marked in **step 3**.



Figure 7

- C)** Once this has been done, repeat this whole process from **step 2 to 4** on the other side of the vehicle.

## 5

**A)**

Once both sides of the car have been marked, it's time to begin the drilling process.

**NOTE:**

The roof of a 1500 DT has heat treated steel, you **CANNOT** drill on high speed as you will not get through the metal.

**B)**

Center punch all marked holes and then using a small sharp pilot hole drill bit with a drill stop, drill all the holes marked in the previous steps.

*Refer figure 8.*

**C)**

Once the pilot holes have been drilled, use a step drill on slow speed and drill all holes out to 10mm.

*Refer figure 9.*

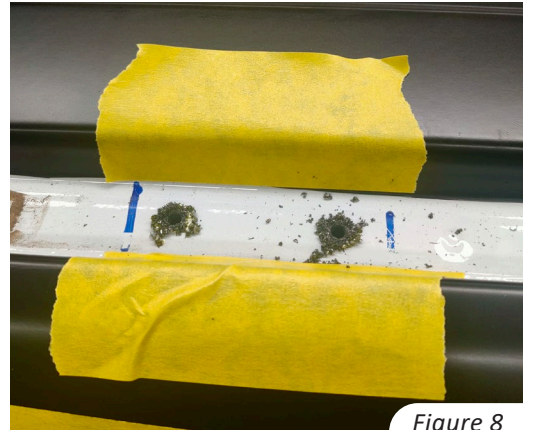


Figure 8

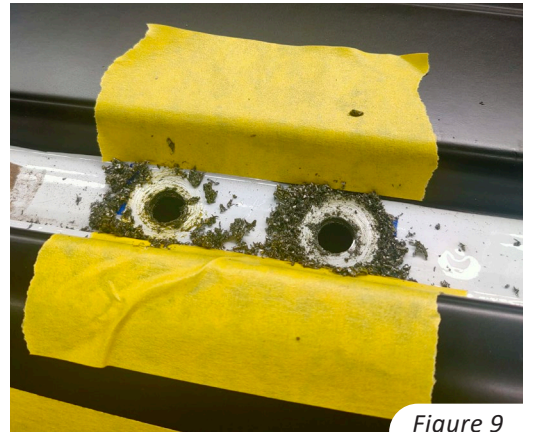


Figure 9

## 6

**A)**

Once all holes have been drilled, blow off any excess metal from the roof.

**B)**

Next use a rust preventative spray or paint all holes to prevent rust.

*Refer figure 10.*

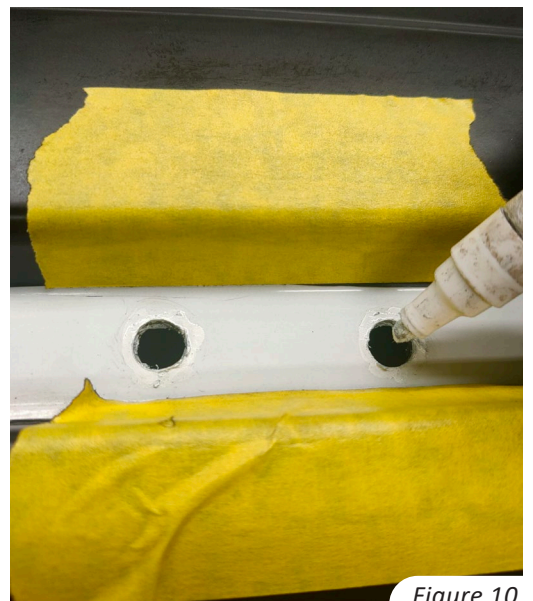


Figure 10

7

Using a nutsert tool, proceed to install all 12 x 6mm thread nutserts which are provided in the kit.

Refer figure 11.

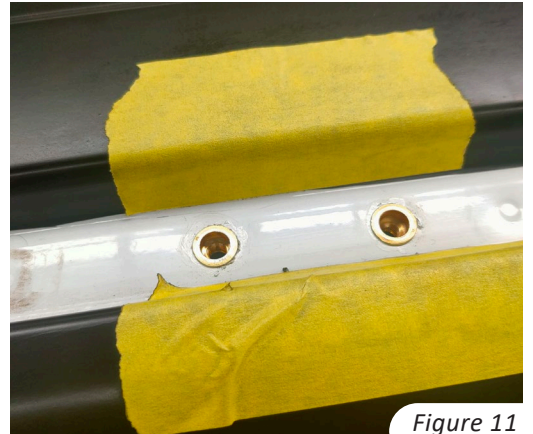


Figure 11

A)

Using a nutsert tool, proceed to install all 12 x 6mm thread nutserts which are provided in the kit.

Refer figure 12.



Figure 12

8

B)

Measure 465mm back from the rearwards bracket line previously marked in **step 3**.

Refer figure 13 and 14.



Figure 13



Figure 14

9

A)

Locate the roof channel trim inwards against the mounting brackets and mark a line of where to cut each section of the trim to fit around the brackets

Refer figure 15.

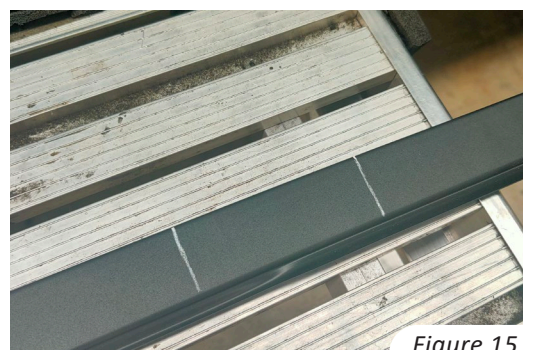


Figure 15

9

**B)**  
Using a nutsert tool, proceed to install all 12 x 6mm thread nutserts which are provided in the kit.

*Refer figure 16 and 17.*

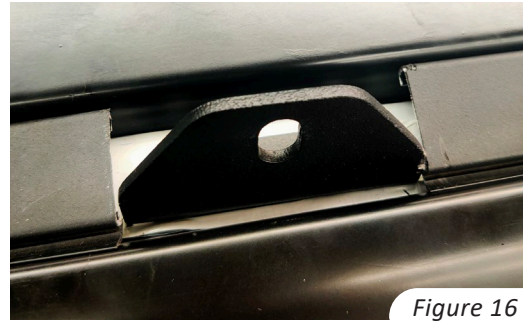


Figure 16



Figure 17

10

**A)**  
Place some cardboard or a blanket on the ground and begin to pre-assemble the roof rack.

**B)**  
Using the M8 spring nuts, M8 Allen key head bolts, M8 spring washers and M8 washers supplied in the kit, proceed to install the provided cross rails to the Adventure Rail Backbones. Leaving all of these bolts loose at this stage.

*Refer figure 18.*

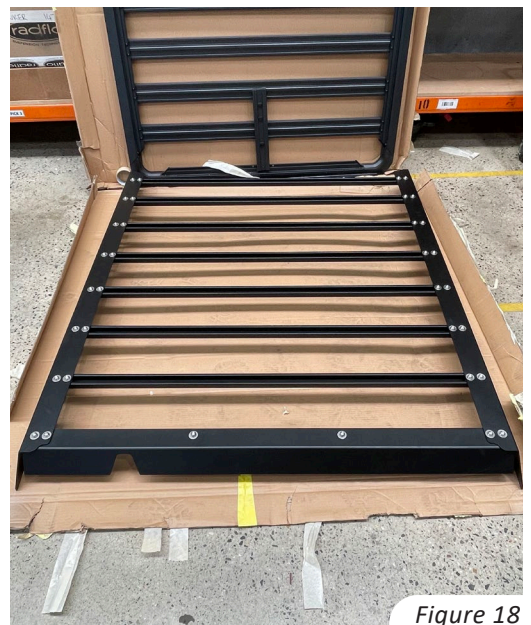


Figure 18

**NOTE:**

Place some cardboard or a blanket on the ground and begin to pre-assemble the roof rack.

**11**

**A)**  
With the help of a second person, proceed to lift the assembly onto the roof and secure the backbones to the roof channel brackets using M8 allen key head bolts, M8 washers and M8 lock nuts supplied in the kit.

*Refer figure 18.*

**B)**  
Once all bolts are in, begin to tighten all roof rack bolts starting with the backbone mounting brackets first on each side and then tighten all the cross rail bolts.



*Figure 19*

**12**

Once all bolts are tight, clean the roof and roof rails to remove all marks and handprints.

**Installation of the  
RAM 1500 DT Adventure Rails  
is now complete.**