



Supplies required for Culottes Class

All the tools you need are available for use at the studio. All supplies required can be purchased at The Stitchery prior to class. We have a wide selection of fabrics to choose from. We can give advice on the best choices for the project.

Fabrics: Suitable fabrics include light to medium weight wovens with plenty of drape e.g. rayon/viscose/ecovero, lightweight linen, cotton lawn, light poplin, silk, crepe, or charmeuse. View A and B work well with both fluid and slightly structured fabrics. For the longer lengths a lighter weight fabric with plenty of drape is recommended.

For required length please see the following pages.

Notions required: 1.5m Lightweight fusible interfacing, co-ordinating thread, 9" invisible zipper.

NOTES:

1. Please purchase and pre-wash your fabrics prior to class.
2. Extra fabric will be required if you want to pattern match the print. Please ask for advice on preparing fabric for this class.

Policies and Refunds

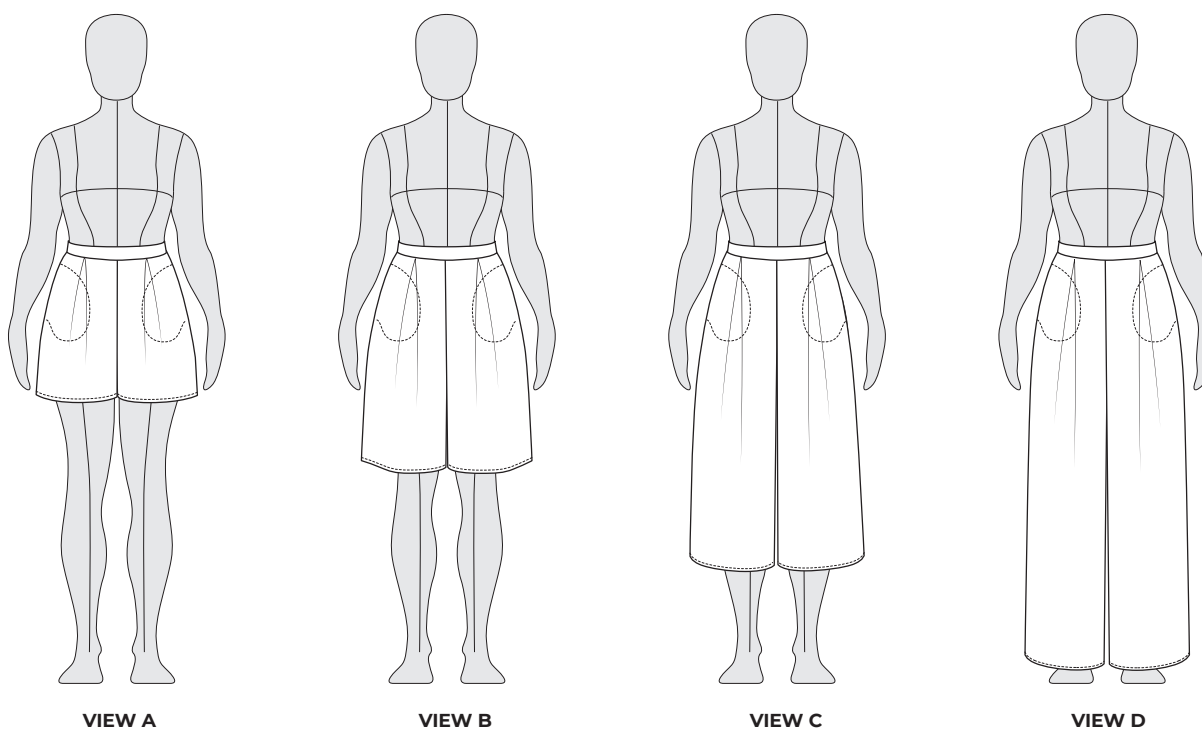
Our classes are limited so you get the best instruction and attention you need.

Our studio is bright and spacious but please bring a face mask for times when distancing is not possible. Tea and water will be available - please bring your own mug.

Covered parking is available off Spring Street if the street parking is full. Parking passes available.

In the studio you are expected to follow instructions and safety guidelines for your own safety and to avoid damage to machines and tools.

To be fair to those who sign up for classes or events and particularly for those on waiting lists we require full payment to reserve your spot in a class. Cancellations made more than 1 week in advance of the class or event will receive a 50% refund. For cancellations made less than 7 days in advance no refund will be given. If we have to cancel a class due to low enrolment you will receive a full refund. Alternatively you can transfer the registration to another class or event. Further information on our policies can be found on our website.



The Winslow Culottes are wide-legged pants designed for ultimate comfort and style. This pattern can be made at any length, from shorts to full-length palazzo pants! The design features in-seam pockets, an invisible zipper, a waistband, and inverted box pleats. Make mid-length culottes in tencel twill for a chic, modern look, shorts in cotton lawn for active adventures, or pants in rayon challis for luxurious weekend wear.

Notions

- 9" (22 cm) zipper
- 55" x 10" (140 cm x 25 cm) lightweight interfacing
- Thread

Difficulty

Advanced Beginner

Sizes

0-34 US

Sewing Skills Learned

- Invisible zipper insertion
- In-seam pockets

Fabric Recommendations

Light to medium weight woven fabrics with plenty of drape such as rayon challis, viscose poplin, crepe dé chine, lightweight linen, and tencel twill. View A and B work well with both fluid and slightly structured fabrics. For the longer lengths (View C and D), a lighter weight fabric with plenty of drape is strongly recommended.



Size Chart

inches

	0	2	4	6	8	10	12	14	16
Waist	24	25	26	27	28	29	30	32	34
Hips	33	34	35	36	37	38.5	40	42	44

	18	20	22	24	26	28	30	32	34
Waist	36	38	40	42	44	46	48	50	52
Hips	46	48	50	52	54	56	58	60	62

centimeters

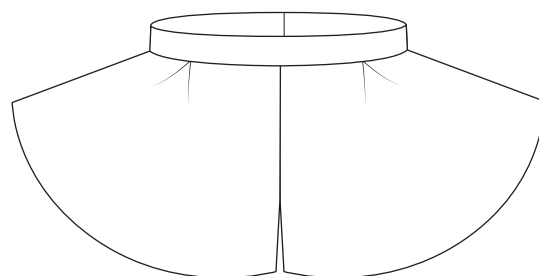
	0	2	4	6	8	10	12	14	16
Waist	61	63.5	66	68.5	71	73.5	76	81.5	86.5
Hips	84	86.5	89	91.5	94	98	101.5	106.5	112

	18	20	22	24	26	28	30	32	34
Waist	91.5	96.5	101.5	106.5	112	117	122	127	132
Hips	117	122	127	132	137	142	147.5	152	157

This pattern has been drafted for a 5'6" (168 cm) tall person.

Choosing a size

Due to the deep inverted box pleats (see image to the right), there is plenty of ease at the hips. We recommend choosing a size based on your waist measurement.



Note, that this pattern includes 3/4" (2 cm) of ease at the waist. If you expect you may want more ease at the waist we recommend sizing up.

	18	20	22	24	26	28	30	32	34
Waist	36	38	40	42	44	46	48	50	52
Hips	46	48	50	52	54	56	58	60	62

In this example, this person would make a size 24.



Finished Garment Measurements

inches

	0	2	4	6	8	10	12	14	16
Waist	24.75	25.75	26.75	27.75	28.75	29.75	30.75	32.75	34.75
Front Rise *	12	12.5	12.75	13	13.25	13.5	13.75	14.5	15
Hip	72.75	74.5	76.5	78.5	80.25	82	84	87.5	91

	18	20	22	24	26	28	30	32	34
Waist	36.75	38.75	40.75	42.75	44.75	46.75	48.75	50.75	52.75
Front Rise *	15.5	16	16.5	16.75	17.25	17.5	18.75	18.25	18.5
Hip	94.75	98.5	102	105.5	109	112.75	116.5	120	123.5

centimeters

	0	2	4	6	8	10	12	14	16
Waist	63	65.5	68	70.5	73	75.5	78	83	88.5
Front Rise *	31.5	32	33	33.5	34.5	35	35.5	37	38.5
Hip	185	190	194.5	200	204	208.5	213.5	222.5	231.5

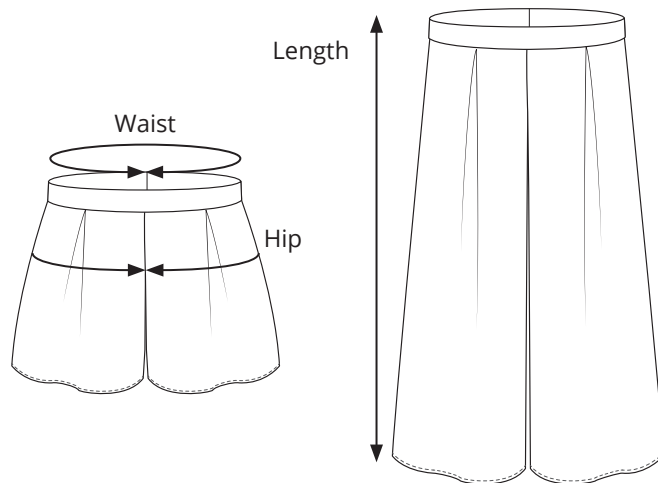
	18	20	22	24	26	28	30	32	34
Waist	93.5	98.5	103.5	108.5	113.5	118.5	124	129	134
Front Rise *	40	41.5	42.5	43.5	44	45	46	46.5	47.5
Hip	240.5	250	259	268	277.5	286.5	295.5	304.5	313.5

* Front rise measurement includes the waistband.

The length is the same for all sizes. **View A** is 18" (46 cm), **View B** is 22" (56 cm), **View C** is 32" (81.5 cm) and **View D** is 41" (104 cm) long.

The Winslow culottes are designed to be made at any length. Four lengths are provided, based on a 5'6" (167 cm) person. You can add or remove length to suit your personal preference.

The **length** is measured from the top of the waistband to the hem. The **waist** is measured around the top of the waistband. The **hip** is measured around the hip of the garment.



Please allow extra fabric for pattern/print matching with large scale prints. If the required fabric is "n/a", the pattern pieces will not fit on this width of fabric. In this case, select a wider fabric.

View A (shorts)

yards

	0	2	4	6	8	10	12	14	16	18	20	22	24	26	28	30	32	34
57" wide	1.4	1.4	1.4	1.4	1.4	1.4	1.4	1.4	1.4	1.4	1.4	1.9	1.9	1.9	2.2	2.2	2.2	2.2
45" wide	2	2	2	2	2	2.2	2.2	2.2	2.2	2.2	2.2	2.5	2.5	n/a	n/a	n/a	n/a	n/a

meters

	0	2	4	6	8	10	12	14	16	18	20	22	24	26	28	30	32	34
150 cm wide	1.3	1.3	1.3	1.3	1.3	1.3	1.3	1.3	1.3	1.3	1.3	1.7	1.7	1.7	2	2	2	2
115 cm wide	1.8	1.8	1.8	1.8	1.8	2	2	2	2	2	2	2.3	2.3	n/a	n/a	n/a	n/a	n/a

View B (above-the-knee)

yards

	0	2	4	6	8	10	12	14	16	18	20	22	24	26	28	30	32	34
57" wide	1.6	1.6	1.6	1.6	1.6	1.6	1.6	1.6	1.6	1.6	1.6	2.2	2.2	2.2	2.4	2.4	2.4	2.4
45" wide	2.2	2.2	2.2	2.2	2.2	2.5	2.5	2.5	2.5	2.6	2.6	3	3	n/a	n/a	n/a	n/a	n/a

meters

	0	2	4	6	8	10	12	14	16	18	20	22	24	26	28	30	32	34
150 cm wide	1.5	1.5	1.5	1.5	1.5	1.5	1.5	1.5	1.5	1.5	1.5	2	2	2	2.2	2.2	2.2	2.2
115 cm wide	2	2	2	2	2	2.3	2.3	2.3	2.3	2.4	2.4	2.7	2.7	n/a	n/a	n/a	n/a	n/a

View C (culottes)

yards

	0	2	4	6	8	10	12	14	16	18	20	22	24	26	28	30	32	34
57" wide	2.2	2.2	2.2	2.2	2.2	2.2	2.2	2.2	2.2	2.2	2.2	2.8	2.8	2.8	3.5	3.5	3.5	3.5
45" wide	3.3	3.3	3.3	3.3	3.5	3.5	3.5	3.5	3.7	3.7	3.7	4.2	4.2	n/a	n/a	n/a	n/a	n/a

meters

	0	2	4	6	8	10	12	14	16	18	20	22	24	26	28	30	32	34
150 cm wide	2	2	2	2	2	2	2	2	2	2	2	2.6	2.6	2.6	3.2	3.2	3.2	3.2
115 cm wide	3	3	3	3	3	3.2	3.2	3.2	3.4	3.4	3.4	3.8	3.8	n/a	n/a	n/a	n/a	n/a

View D (long pants)

yards

	0	2	4	6	8	10	12	14	16	18	20	22	24	26	28	30	32	34
57" wide	2.7	2.7	2.7	2.7	2.7	2.7	2.7	2.7	2.7	2.7	2.7	3.6	3.6	3.6	4.4	4.4	4.4	4.4
45" wide	3.9	3.9	3.9	3.9	3.9	4.4	4.4	4.4	4.4	4.4	4.7	5	5	n/a	n/a	n/a	n/a	n/a

meters

	0	2	4	6	8	10	12	14	16	18	20	22	24	26	28	30	32	34
145 cm wide	2.5	2.5	2.5	2.5	2.5	2.5	2.5	2.5	2.5	2.5	2.5	3.3	3.3	3.3	4	4	4	4
115 cm wide	3.6	3.6	3.6	3.6	3.6	4	4	4	4	4.3	4.3	4.5	4.5	n/a	n/a	n/a	n/a	n/a

