

Campionario - Sample



TESSUTI
PELLI
LEGNI



FABRIC
LEATHER
WOODS

dal 1919

CARPANELLI

DESIO - ITALY

20832 DESIO (MB) ITALY VIA BRESCIA, 5 - Tel. +39 0362.620261 ☎ - +39 0362.622056 ☎ - Fax +39 0362.300659 - CP/PO BOX 214
Show-Room: Bottega d'autore - 20832 Desio (MB) via Milano, 374 - info@carpanelli.com - www.carpanelli.com

Categoria / Category D
Composizione / Composition : 40%SE - 60%VI 



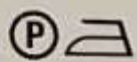
Categoria / Category D
Composizione / Composition : 40%SE - 60%VI 



1871
CARPANELLI

Categoria / Category C

Composizione / Composition : 90%CO - 10%VI



Categoria / Category C

Composizione / Composition : 100%PL



dal 1919

CARPANELLI

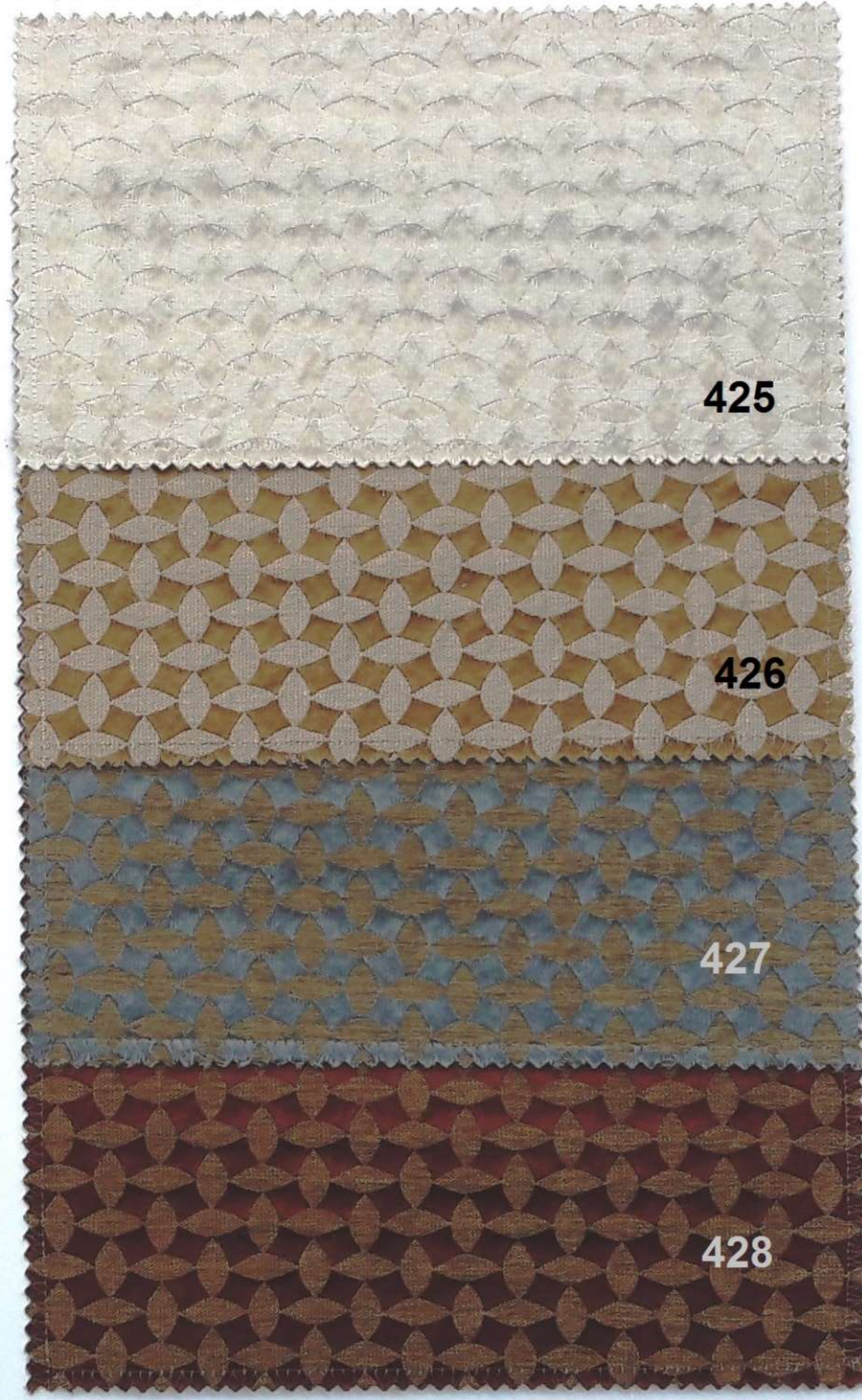
Categoria / Category C

Composizione / Composition : 33%LI - 67%PL 



Categoria / Category C


Composizione / Composition : 33%LI - 67%PL 



dal 1919

CARPANELLI

Categoria / Category D

Composizione / Composition : 57%AC - 22%SE - 21%LI (P) 



Categoria / Category C


Composizione / Composition : 21%SE - 29%VI - 50%LI (P) 



dal 1919

CARPANELLI

Categoria / Category C

Composizione / Composition : 55%PL - 40%PC - 4%CO - 1%LU 



407



408



409

Categoria / Category D

Composizione / Composition : 29%AC - 27%VI - 23%SE - 21%LI 



410



411




412

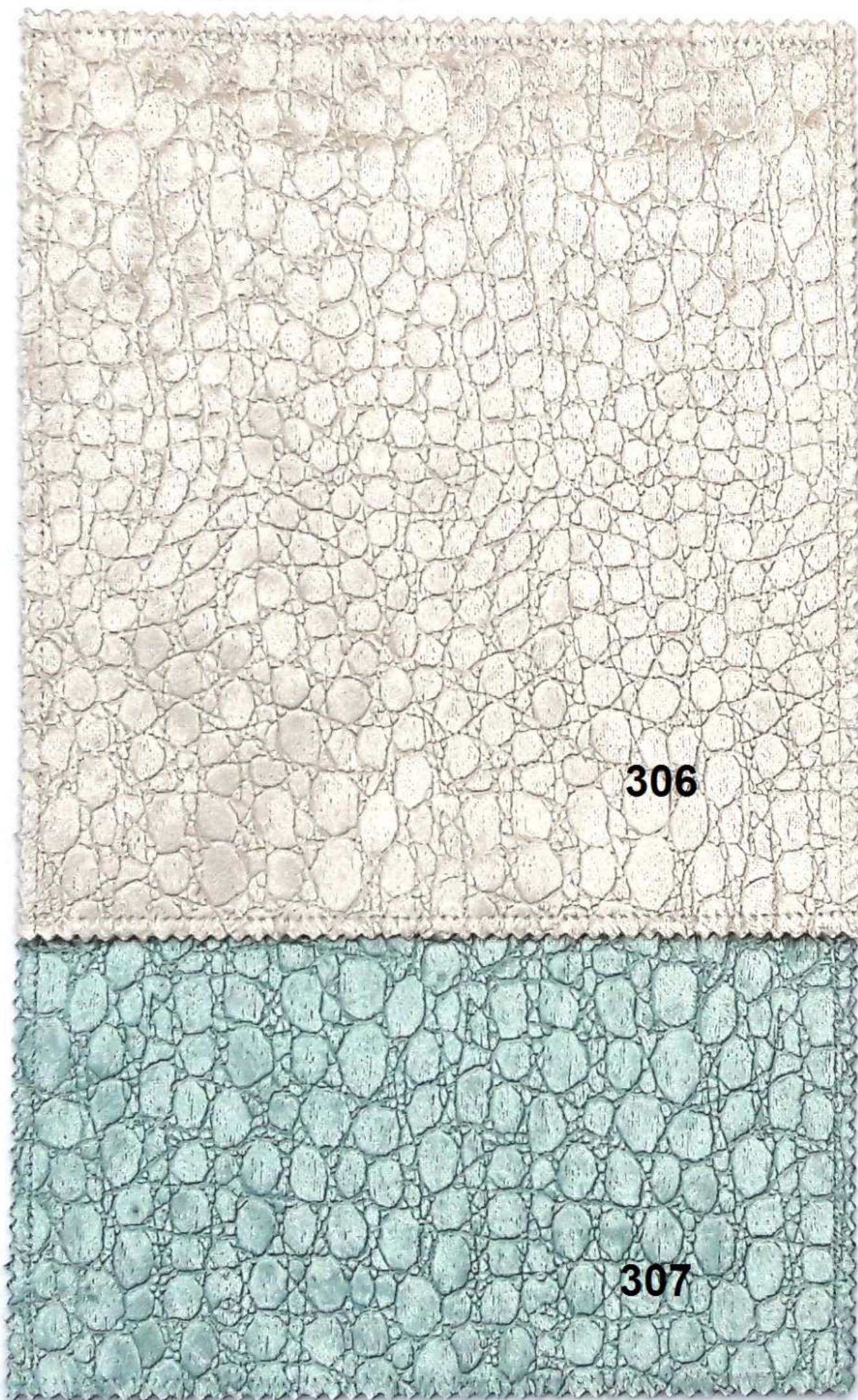


dal 1919

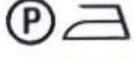
CARPANELLI

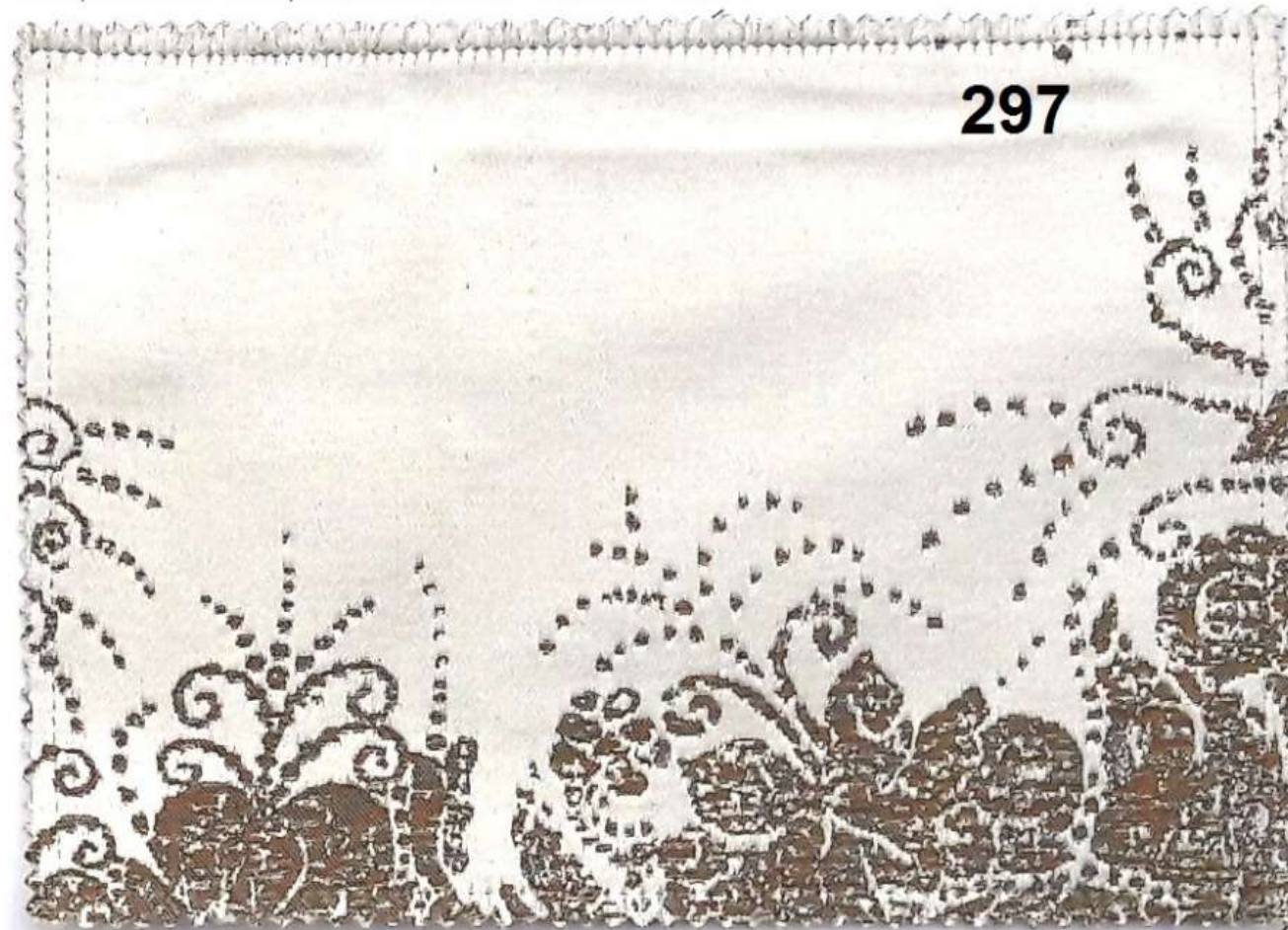
Categoria / Category C

Composizione / Composition : 100% PL 




Categoria / Category D

Composizione / Composition : 26%CO - 20%SE - 16%VI - 16%AC - 11%LI - 11%PM 



Categoria / Category C


Composizione / Composition : 41%CO - 37%AC - 22%SE 

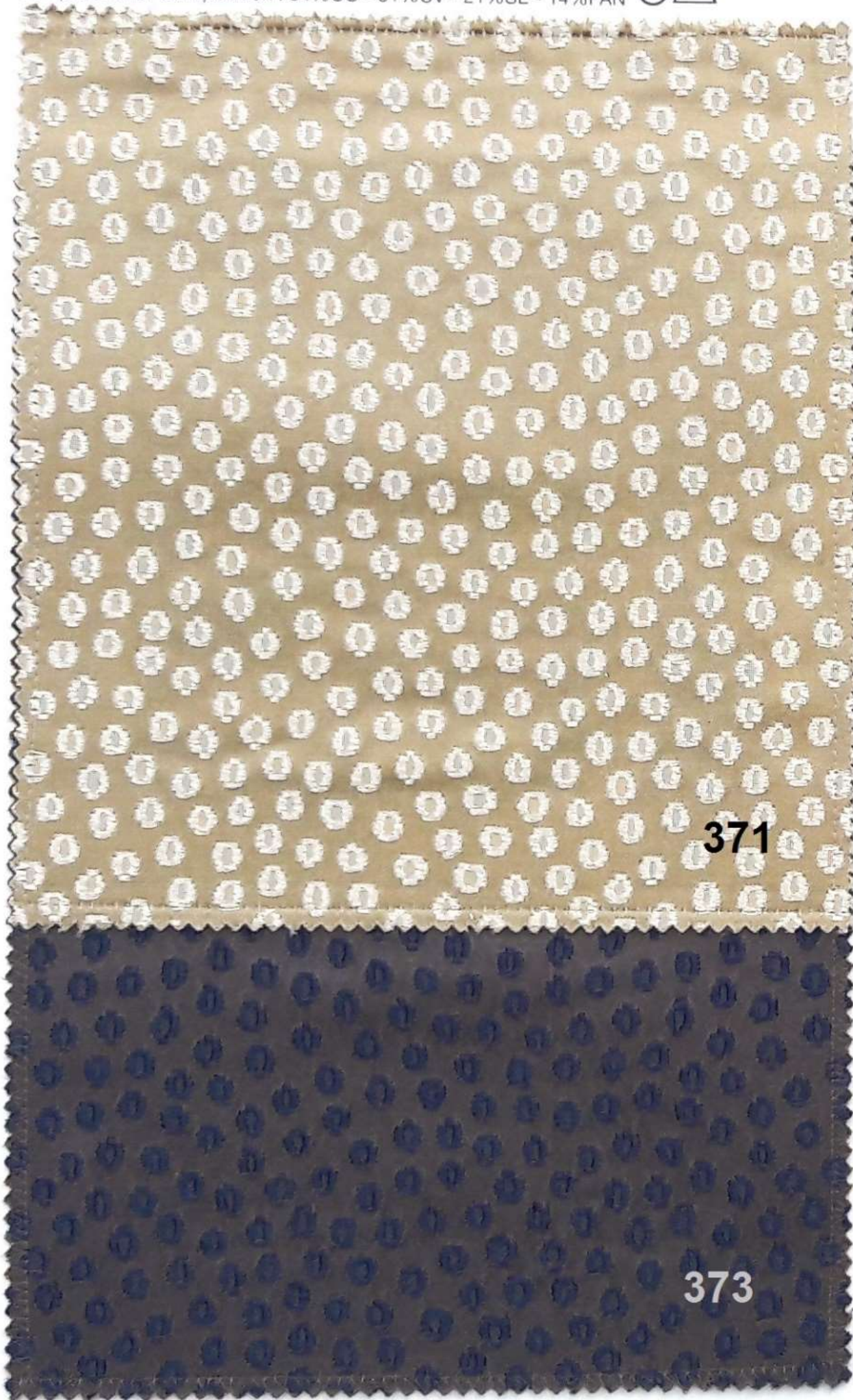


dal 1919


CARPANELLI

Categoria / Category D

Composizione / Composition : 34%CO - 31%CV - 21%SE - 14%PAN (P) 



Categoria / Category D

Composizione / Composition : 100%CV (P) 

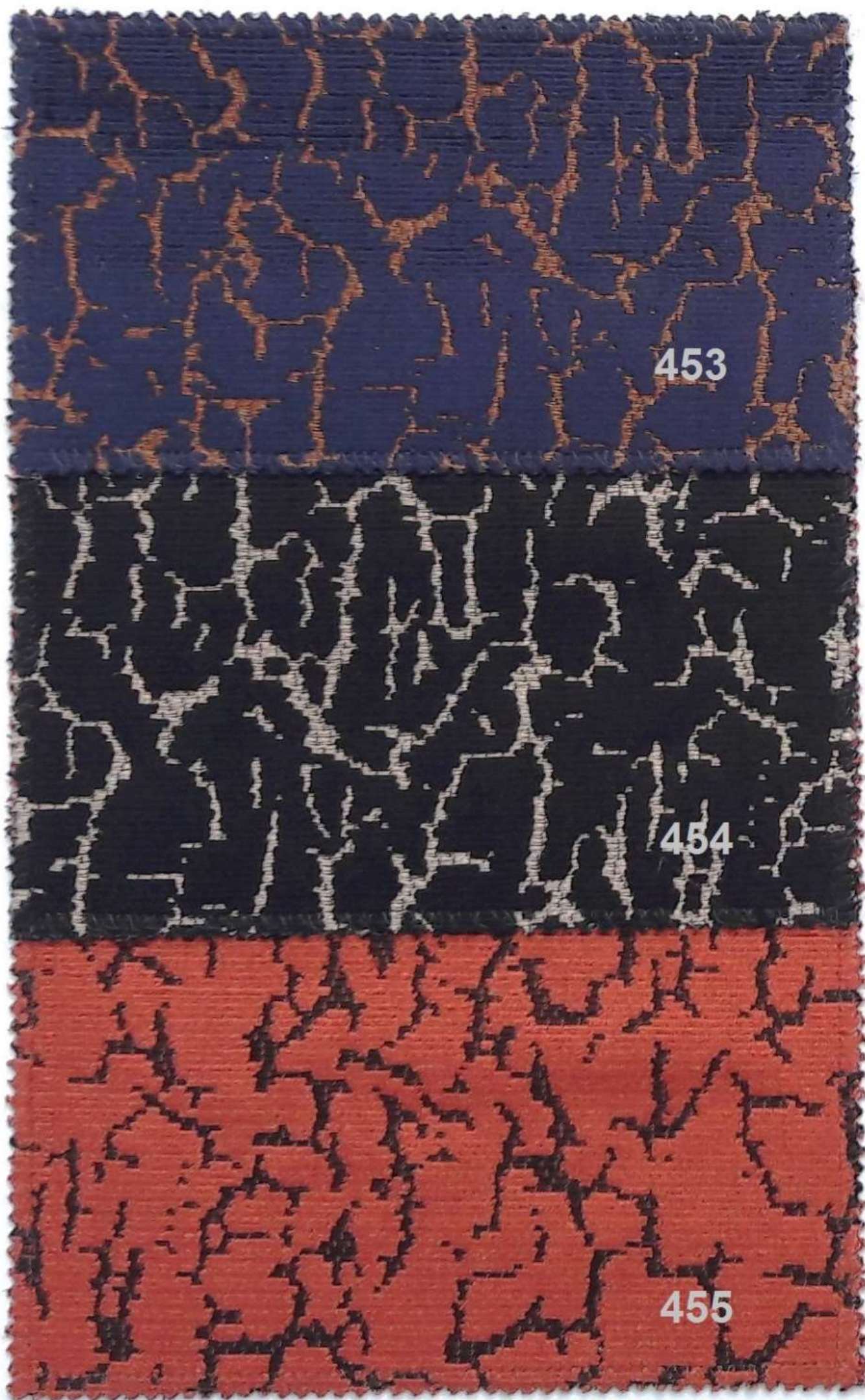


dal 1919

CARPANELLI

Categoria / Category E

Composizione / Composition : 53%VI - 34%CO (P) 



Categoria / Category E

Composizione / Composition : 53%VI - 34%CO (P) 



dal 1919

CARPANELLI

Categoria / Category C

Composizione / Composition : 45%VI - 55%PL 

447

448

449

Categoria / Category C

Composizione / Composition : 45%VI - 55%PL 

450

451

452



dal 1919

CARPANELLI

Categoria / Category C
Composizione / Composition : 100%CO (P) 



Categoria / Category C
Composizione / Composition : 100%CO (P) 



dal 1919

CARPANELLI

Categoria / Category C

Composizione / Composition : 51%VI - 41%CO - 9%PL 



Categoria / Category C

Composizione / Composition : 51%VI - 40%CO - 8%PL - 1%PA 



dal 1919

CARPANELLI

Categoria / Category C

Composizione / Composition : 100%PL 



Categoria / Category C

Composizione / Composition : 70VI - 30PL 

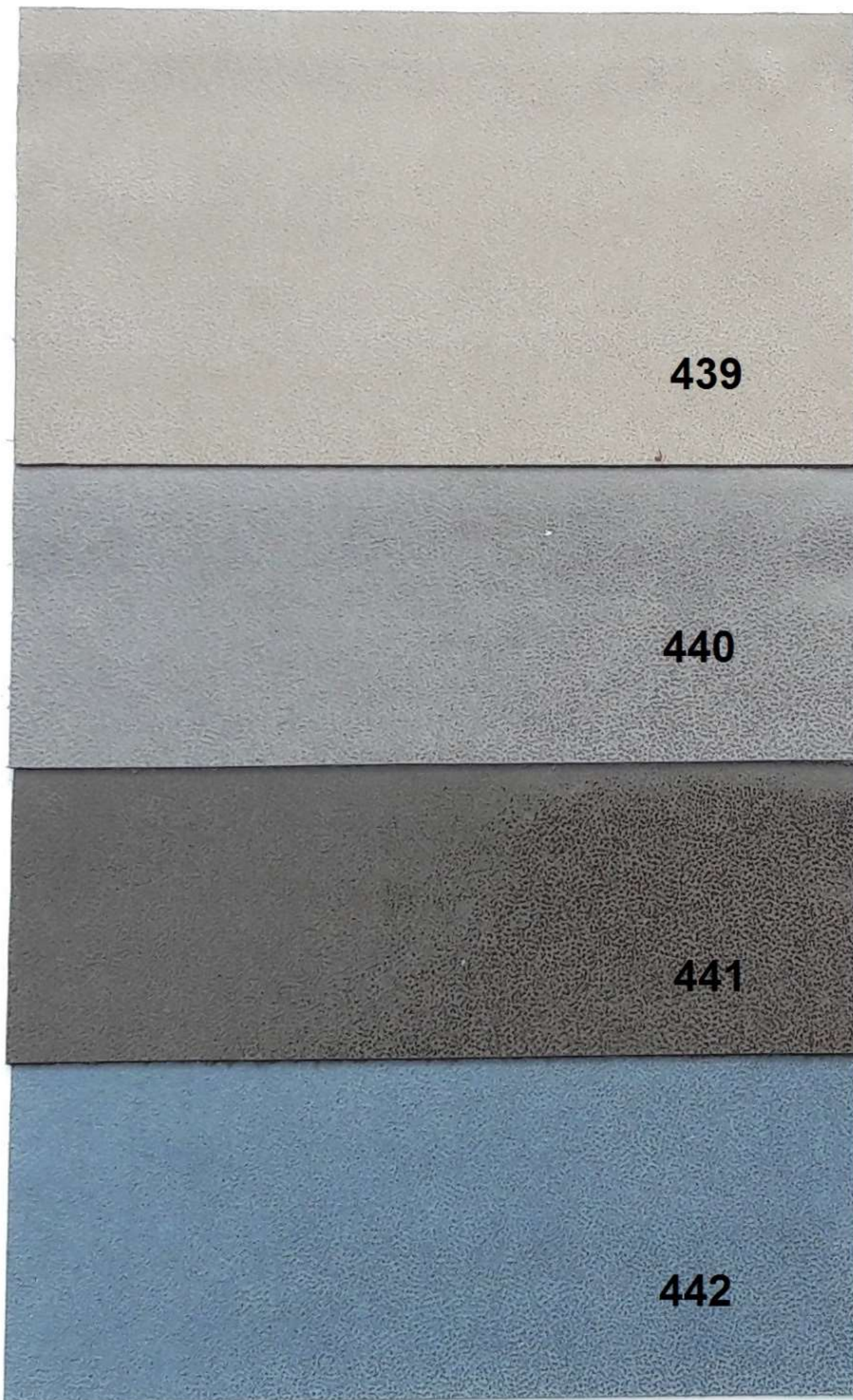


dal 1919

CARPANELLI

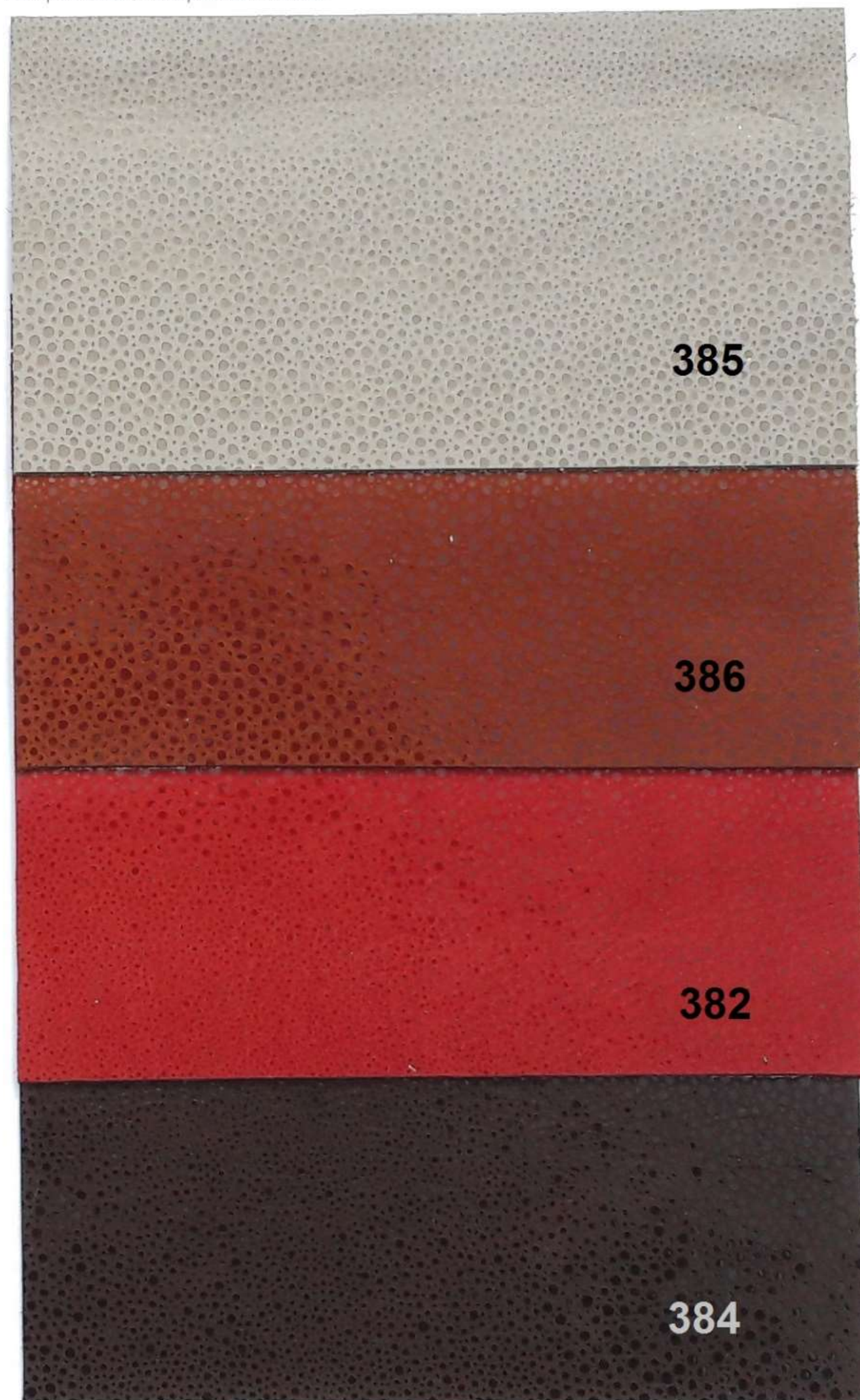
Categoria / Category F

Composizione / Composition : Pelle / Leather



Categoria / Category F

Composizione / Composition : Nabuk



dal 1919

CARPANELLI

Categoria / Category E

Composizione / Composition : Nabuk



Categoria / Category D

Composizione / Composition : Pelle / Leather



dal 1919

CARPANELLI

Categoria / Category F

Pelle, stampa cocodrillo / Leather with Crocodile print



Categoria / Category F

Nabuk, stampa Sobek / Nabuk with Sobek print



Categoria / Category F

Nabuk, stampa Fiore / Nabuk with Fiore print



Categoria / Category F

Nabuk, stampa Fiordaliso / Nabuk with Fiordaliso print



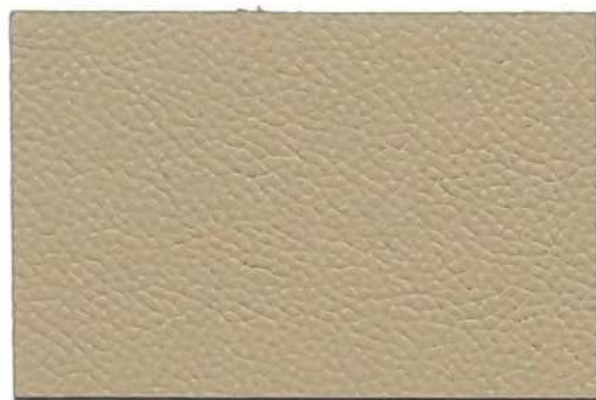
dal 1919

CARPANELLI

PELLE / LEATHER - Categoria /Category D



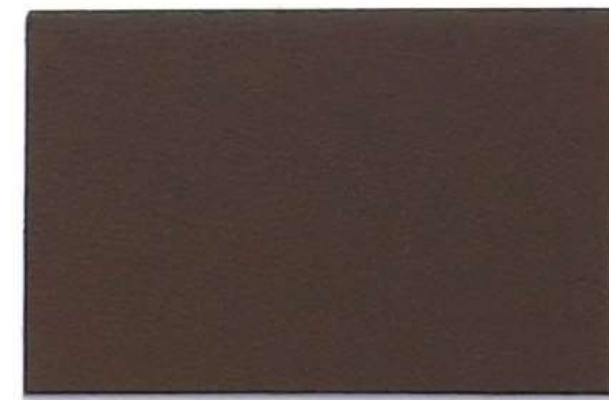
476 BEIGE



484 ACERO



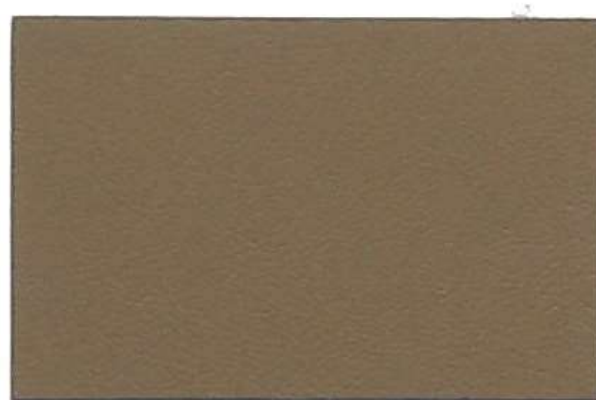
485 SAFARI



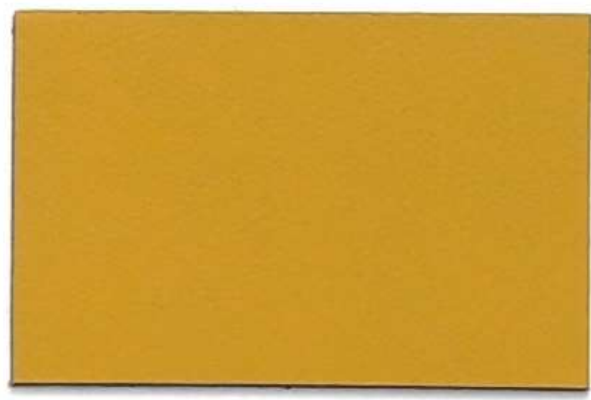
475 CACAO



477 CANAPA



478 FANGO



480 MANGO



482 AVOCADO



483 POLVERE



479 BEOLA



481 MELOGRANO



486 NERO

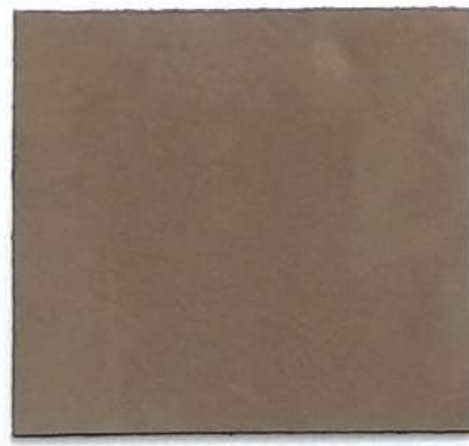
NABUK - Categoria /Category F



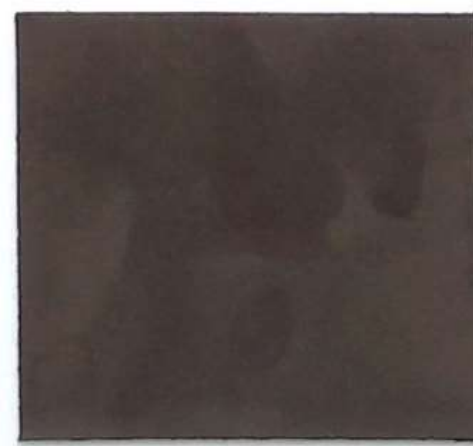
487 NABUK



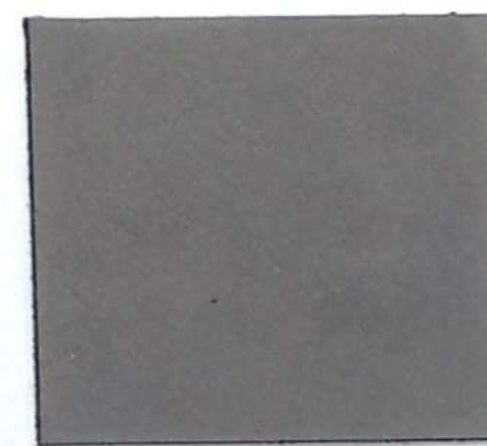
488 NABUK



489 NABUK



490 NABUK



491 NABUK



dal 1919

CARPANELLI

