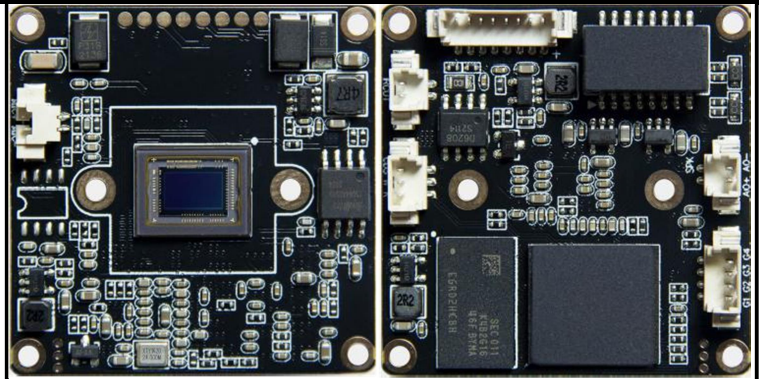


H8MH8S

1/2.8" SONY LOW Lux IMX415 CMOS Sensor with FH4K DSP, single layer with 38mm*38mm; support IR LED, white LED/warm LED and Dual Light; H.265+H.264 video coding, Support body detection & mark human frame, Main stream is 3840*2160, Sub stream is D1, Enabled with ONVIF protocol and All Net Connect.



Model No.	H8MH8S	
Hardware		
Module	FH4K+1/2.8" SONY IMX415 CMOS	
LUX	COLOR 0.05Lux@F1.2; B/W 0.005Lux@F1.2;	
S/N	≥50db(AGC OFF)	
WDR	DWDR; >80db	
Port		
Audio Input	1CH MIC Input	
Audio Output	1CH Output, Speaker Optional	
IO port	1CH RESET	
SD card	Not support now	
WIFI	NO	
Video Coding		
Coding Format	H.265/H.264	
Main Steam	3840*2160 , 1-15FPS/S;	
	2880*1664、2560*1440、2304*1296、1920*1080、 1280*720, 1-15 FPS/S	
Sub steam	704*576、800*448、640*480、640*360、352*288, 1-15 FPS/S	
Video Coding Compression	128Kbps-8192bps continuous adjustable	
Image Adjustment	Brightness, contrast, saturation, sharpness	
Subtitle Overlay	Support Channel Name、 Date & Time .5 groups of characters superposition adjustable	
Data Transmission &Storage		
Data Record	Video,picture	
Storage Method	Cycling Recording, Alarm Recording	
Alarm Transfer	IO output, browser, management software	
Protocol	All Net Connect / ONVIF 2.6	

Mobile	Support IOS, Android
Browser	Support Edge Chrome browser and others
Temperature	-30°C - +60°C
Humidity	0% - 90%
Power	DC12V 150MA /POE
power	1.8W
size	38* 38*10mm (without lens)
Weight	12g
Connector	

