

## Thanks for choosing Nicefeel Oral Irrigator

Traditional Clean: Traditional brushing can't easily reach hidden food debris and harmful bacteria, floss can only reach the limited area below the gums.

Nicefeel Oral Irrigator Clean: Nicefeel Oral Irrigator removes trapped food debris and harmful bacteria.

### ● Contact us:

Fly Cat Electrical Co., Ltd.

Address: No.4 bldg, Xianyuxing industrial park,  
Gonghe community, Shajing, Bao'an Shenzhen, China

Call: (+1) 573 821 9069 (US)

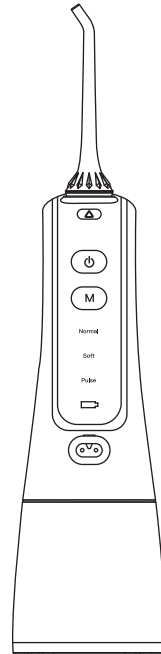
Tel: (86) 0755-2729 8495

Facebook: @Nicefeellofficial

URL: www.nicefeel-mdt.com

Fax: (86) 755-2727 3346

Email: Service@nicefeel-mdt.com



# Nicefeel®

Portable Oral Irrigator

Portable Oral Irrigator  
Usage Manual

FC256

Thank you for choosing the Nicefeel portable Oral Irrigator to make your teeth even healthier, and your smile even more appealing.

Contents.....	01
ULStandard .....	02-05
Product Description .....	06
Product Accessories .....	07
Operating Procedures .....	08
Usage Instructions .....	09
Recommended Techniques.....	10
Disassembly Example .....	11
Battery Maintenance And Handling .....	12
Troubleshooting Guide.....	13

## IMPORTANT SAFEGUARDS

When using electrical products, especially when children are present, the basic safety precautions below should always be followed.

### READ ALL INSTRUCTIONS BEFORE USING.

#### DANGERS:

##### To reduce the risk of electrocution:

- ◆ Do not handle charger with wet hands.
- ◆ Do not immerse in water or other liquid.
- ◆ Do not use while bathing.
- ◆ Do not place or store product where it can fall or be pulled into a tub, shower stall or sink.
- ◆ Do not reach for a product that has fallen into water. Unplug immediately.
- ◆ Check the charger cord for damage before the first use and during the life of the product.

## WARNING:

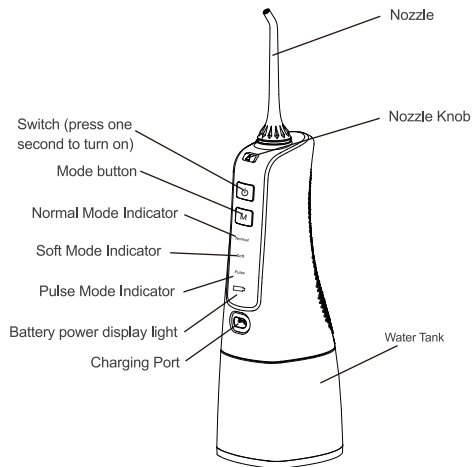
### To reduce the risk of burns, electric shock, fire, serious injury or damage to issue:

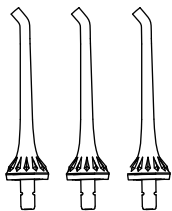
- ◆ Do not plug this device into a voltage system that is different from the voltage system specified on the device or charger.
- ◆ Do not use the product if the cord or plug is damage. Please contact your local distributor or seller if it is not working properly or has been dropped into any liquid.
- ◆ Do not direct water under the tongue, into the ear, nose or any other delicate areas. This product is capable of producing pressures that may cause serious damage in these areas, must follow the operation instructions when using.
- ◆ Use this product only as indicated in these instructions as recommended by your professional dentist.
- ◆ It is normal phenomenon as for causing gum bleeding when using at the first time, it is depended on gum bearing ability.
- ◆ Never use while sleeping and drowsy.
- ◆ Use this product only for it's intended use as described in this manual. Do not use attachments not recommended by the manufacturer.
- ◆ The product has no user serviceable parts.

- ◆ Fill reservoir with water or other dental professional recommended solutions only.
- ◆ Do not drop or insert any foreign object into any opening on the product.
- ◆ Keep charging unit and cord away from heated surfaces.
- ◆ Do not operate where oxygen or aerosol sprays are being used.
- ◆ Do not use mouthwashes/rinses that contain iodine, bleach, or tea tree oil.
- ◆ Do not while wearing any oral jewelry. Remove prior to use.
- ◆ Do not use if you have wound on your tongue or in your mouth.
- ◆ If your physician advised you to receive antibiotic premedication before dental procedures, you should consult your dentist before using this instrument or any other oral hygiene aid.
- ◆ For household use only. Do not use outdoors.

- Closely instruct and supervise children and individuals with special needs in the proper use of this product.
- Children should be supervised to ensure that they do not play with the appliance.

## SAVE THESE INSTRUCTIONS.

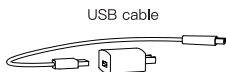




Jet tips x 3



Orthodontic tip x 1

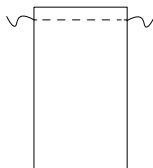


USB cable

adaptor



Jet tips box

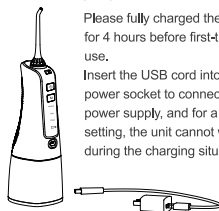


travel bag

### Extremely important preparation work

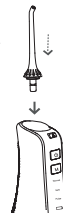
Please fully charged the unit for 4 hours before first-time use.

Insert the USB cord into the power socket to connect the power supply, and for a safety setting, the unit cannot work during the charging situation.



### Jet tip installation and disassembly

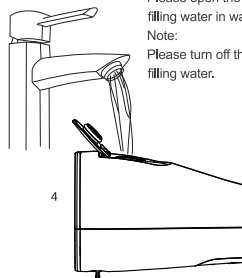
Insert the jet tip into the spray head hole, screwing it in until you hear a clicking sound.



Show as Diagram 4,  
Please open the lid before filling water in water tank.

Note:

Please turn off the unit before filling water.

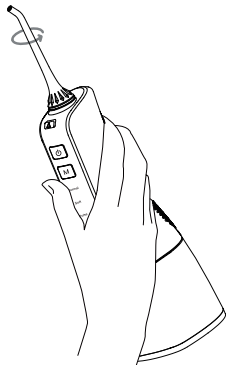


4

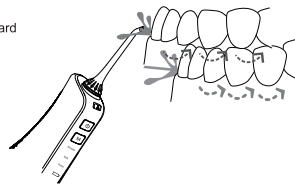


Please press on the disassembly button to change jet tip.

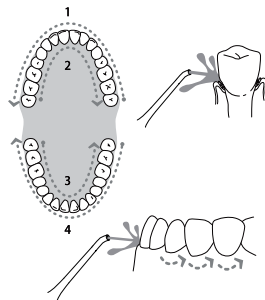
- ◆ Press one second to turn on, don't worry about turning it on by touched accidentally when using or on your bag.
- ◆ The unit has a memory function setting that the water pressure mode will be the same as last time use when turn on directly if not change the mode at first.
- ◆ The normal, soft, pulse modes can be changed during turn on or turn off situation, so you can choose the mode you prefer before turn on.
- ◆ Each mode will automatically turn off after continually operating 120 seconds, usually empty 300ml capacity water needs about 120 seconds so an automatically turn off setting can prolong the service life of the product.
- ◆ During charging, the three modes display lights will keep flashing and when they are constantly on, it means the unit is fully charged.
- ◆ If all three display lights are flashing during use, it means the unit is in low battery and needs a recharging.
- ◆ For a safety setting, the unit cannot work during the charging situation.
- ◆ Both the jet tip and the tube in the water tank are 360 degree adjustable to ensure it is easily taking water up to jet tip.



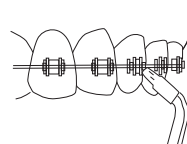
Holding the unit jet tip slant downward and point to teeth before turn on.



To get a best effect, please slightly close your mouth to avoid the water spraying out when the water flows and the gums are at a 90-degree angle. Please firstly clench the rear teeth and slide the water flows route around teeth as the picture shows. You can keep water flows until the area around the gums are fully cleaned.

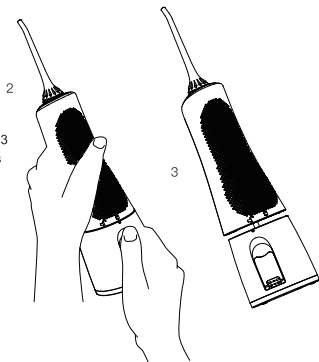


Orthodontic tip for braces carriers. Flush out food debris & bacteria from around the teeth and under the gums. It also removes hard-to-reach plaque around orthodontic brackets and wires.



**Procedures:**

Please turn off the unit and empty water tank.



Show as Diagram 2-3  
The right hand holds the water tank and rotate left(anticlockwise) to remove it, while rotate right(clockwise) can lock the water tank.

**Battery Maintenance**

- Please fully charged the unit for 4 hours before first-time use.
- Please fully charged the unit for 4 hours before a long time storage.
- Please recharging when in low battery to maximize battery life.

**Battery Recycling**

The unit includes a lithium battery which cannot be replaced, please dispose to local recycling center after runs out to keep environmentally-friendly.

Problem	Cause	Solution
Leakage between Jet tips and direction control knob	Gasket in tip base broken or improper installation of jet tip	Make sure the tip to be inserted in or ask for after-service
Reservoir leaks	Gasket broken or improper installation	Replace sealing ring, contact vendor for maintenance or install it as per instruction
Inadequate pressure	Low power	Fully charged
Does not start	Low power	Fully charged
No water flow	Filter is clogged	Clean the filter

If the above method can not work, please contact the seller or the designated after-sales service point.

Specifications:

- ◆ Power: 5w
- ◆ Reservoir: 10 oz / 300ml
- ◆ Pressure Range: 30~100psi
- ◆ Pulse Rate: 1400~1800 times/min
- ◆ Modes: normal, soft, pulse
- ◆ Battery: 1400mAh lithium battery