

Thanks for choosing Nicefeel Oral Irrigator

Traditional Clean: Traditional brushing can't easily reach hidden food debris and harmful bacteria, Floss can only reach the limited area below the gums.

Nicefeel Oral Irrigator Clean: Nicefeel Oral Irrigator removes trapped food debris and harmful bacteria.

● Contact us:

Fly Cat Electrical Co., Ltd.

Address: No.4 bldg, Xianyuxing industrial park,
Gonghe community, Shajing, Bao'an Shenzhen, China

Call: (+1) 573 821 9069 (US)

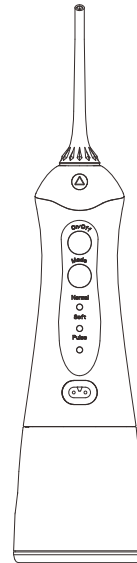
Tel: (86) 0755-2729 8495

URL: www.nicefeel-mdt.com

Facebook: @Nicefeelofficial

Fax: (86) 755-2727 3346

Email: Service@nicefeel-mdt.com



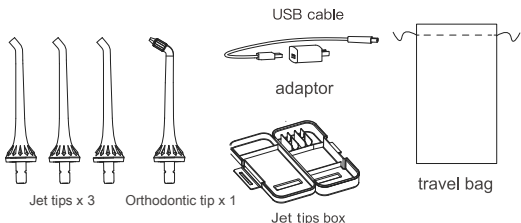
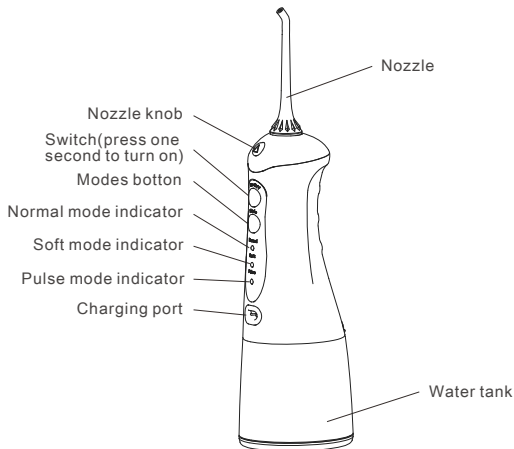
Nicefeel®

Portable Oral Irrigator

Instruction Manual

FC159

Welcome! By selecting Nicefeel Oral Irrigator you are on your way to better gum health and a healthier smile!



Battery Maintenance

1. Please charge 4 hours until fully charged before first use.
2. Plug the USB cable into the charging socket and turn on the power.
3. If the Oral Irrigator needs to be stored for a long time, charge it for 4 hours before storing.
4. To maximize the lifespan of the batteries, please charge once in a while.

Battery Disposal

The unit contains a lithium battery. At the end of the battery life, please recycle the unit at your nearest recycle center per local or state requirements. The battery is not replaceable.

After Used

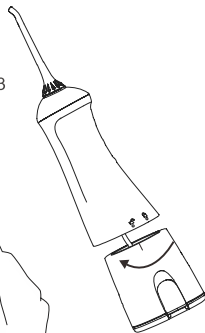
Turn the unit off. Empty any liquid left in the reservoir.



2



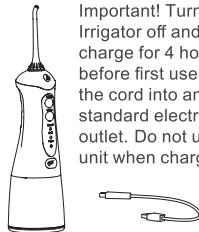
3



As shown in figure 2, hold body of unit, the other hand seize the water tank, as shown in figure 3, turn counter-clockwise to pull down, remove the water tank.

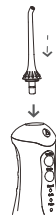
Start Working

Important! Turn Oral Irrigator off and charge for 4 hours before first use. Plug the cord into any standard electrical outlet. Do not use the unit when charging.

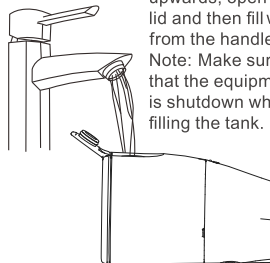


Inserting and Removing Tips

Insert tip into the center of oral irrigator till you hear the sound of a click.



The water reservoir upwards, open the lid and then fill water. from the handle, Note: Make sure that the equipment is shutdown when filling the tank.



Remove the tip from the handle, press the tip eject button then pull tip from the handle.



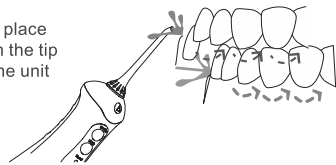
Instructions for Use

- ◆ Press one second to turn on, don't worry about turning it on by touched accidentally when using or on your bag.
- ◆ This product has non-volatile memory function, press the key, the mode is the same as that before shutdown of last time.
- ◆ Press the mode key to change among the following: Normal, Soft, Pulse.
- ◆ Even if it is power off, the modes change is available. You can choose your own favorite mode and then boot.
- ◆ If one mode lasts for more than 120 seconds, the unit will turn off automatically.
- ◆ Press the mode key for more than 3 seconds to display the battery power.
- ◆ When charging, the three lights will flash in sequence. When all the 3 lights is on, the unit is fully charged.
- ◆ In use, the three lights flashing says lack of electricity, please charge soon.
- ◆ The unit can not be used when charging.
- ◆ Rotate the control knob to change stream direction.

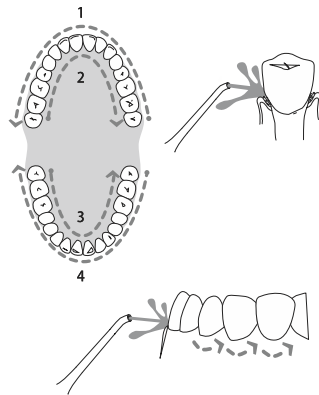


Recommended Technique

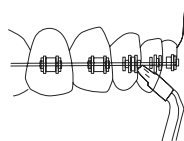
Lean low over sink and place the jet tip in mouth. Aim the tip toward teeth and turn the unit on.



Direct the jet stream at a 90-degree angle to your gumline. Slightly close lips to avoid splashing but allow water to flow freely from mouth into the sink. For best results, start from the molar area (back teeth) to the front teeth. Glide jet tip along gumline and stop for a while between teeth. Keep do it till all surrounding areas and teeth gaps have been cleaned.



Orthodontic tip for braces carriers. Flush out food debris & bacteria from around the teeth and under the gums. It also removes hard-to-reach plaque around orthodontic brackets and wires.



Troubleshooting Guide

Problem	Cause	Solution
Leakage between Jet tips and direction control knob	Gasket in tip base broken or improper installation of jet tip	Make sure the tip to be inserted in or ask for after-service
Reservoir leaks	Gasket broken or improper installation	Replace sealing ring, contact vendor for maintenance or install it as per instruction
Inadequate pressure	Low power	Fully charged
Does not start	Low power	Fully charged
No water flow	Filter is clogged	Clean the filter

If the above method can not work, please contact the seller or the designated after-sales service point.

Specifications:

- ◆ Power: 5w
- ◆ Reservoir: 10 oz / 300ml
- ◆ Pressure Range: 30~100psi
- ◆ Pulse Rate: 1400~1800 times/min
- ◆ Modes: normal, soft, pulse
- ◆ Battery: 1400mAh lithium battery

Contents

Contents	01
Product Description and Accessories	02
Getting Started	03
Instructions for Use	04
Recommended Technique	05
Remove and Clean Reservoir	06
Battery Maintenance and Disposal	07
Troubleshooting Guide	08