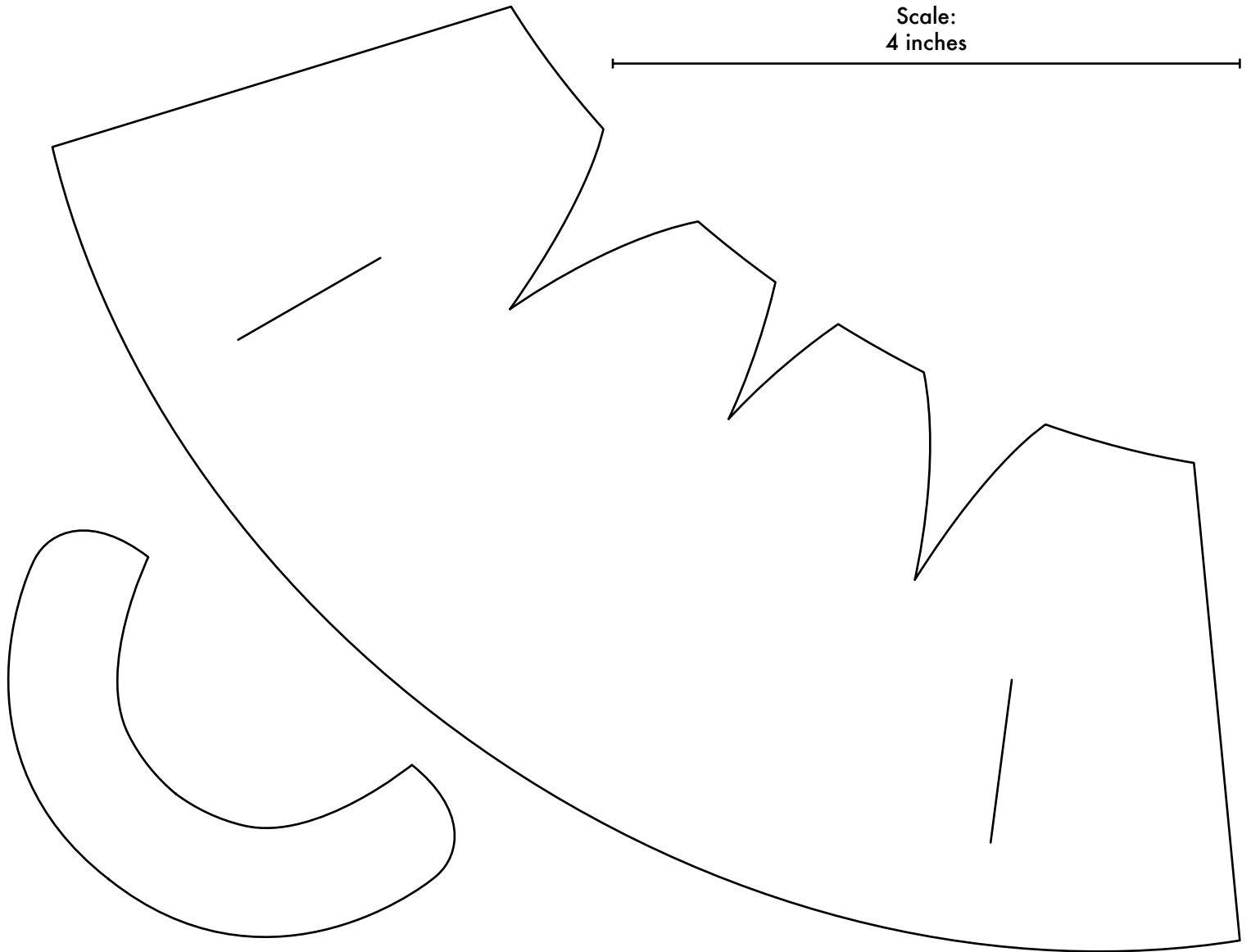


Blythe Felt Cape Pattern



**Make a little cape to keep your doll toasty and warm
on a chilly winter's day!**

Tools & Materials:

Felt in your desired color
Erasable fabric pen (optional)
Thread to match felt (I use two strands of six-stranded embroidery floss.)
Needle
Scissors
Snaps

I'd love to see any projects you make with this pattern!

Feel free to share:

📷 BeesKneesIndustries & #BeesKneesIndustries

Instructions:

1. Cut out each of your pattern pieces in the felt.
(Tracing the pattern onto your felt with an erasable fabric pen makes this part much easier.)
2. Using a whip stitch, sew the darts in the cape. (fig. 1)
3. Attach the collar to the cape using a whip stitch. Begin by lining up the right edge of the collar with the right edge of the cape. This will leave a bit of neckline open on the left side of the cape, which gives you room to attach the snap later. (fig. 2)
4. Stay stitch the edges of the cape and the armholes with a running stitch. (fig. 3)
5. Attach snaps or other closure to neck. (fig. 4)
6. Dress up your dolly, and enjoy a walk through the woods!

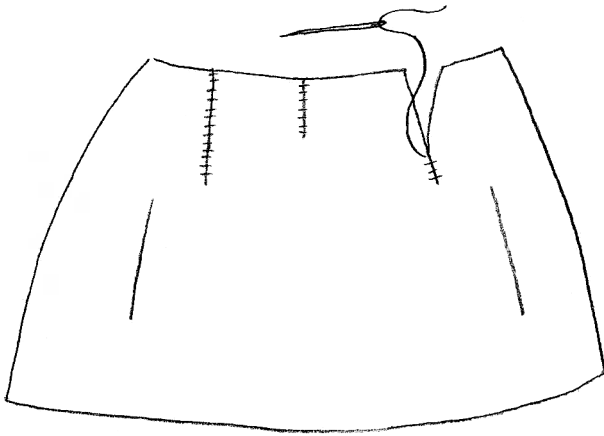


fig. 1

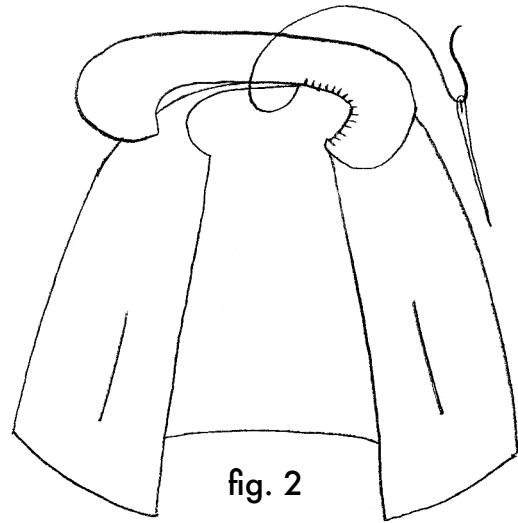


fig. 2

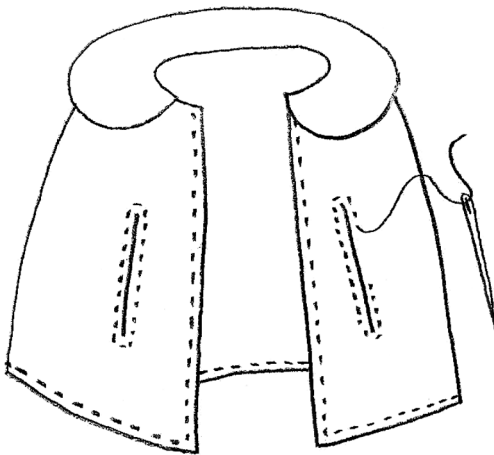


fig. 3

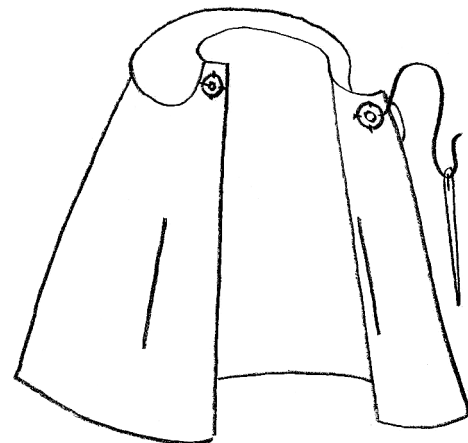


fig. 4