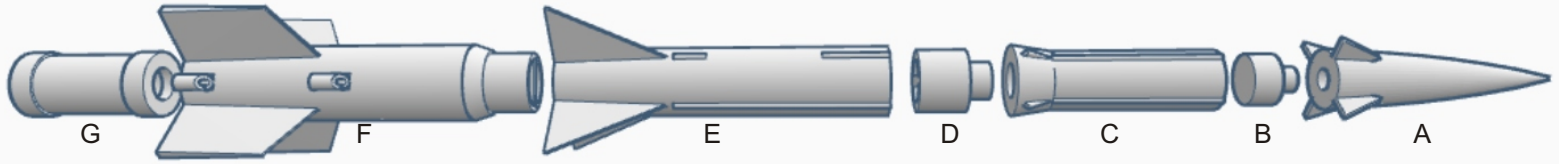


1/24th Scale Nike Zeus B Flying Model Rocket

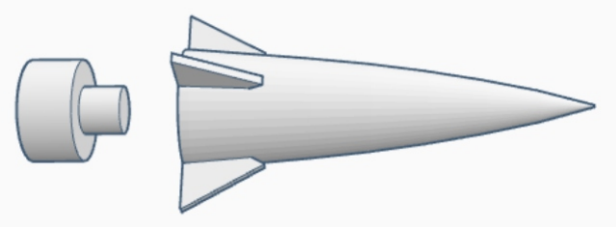
Thank you for purchasing a Boyce Aerospace Hobbies Nike Zeus B kit. Please read these directions fully before you begin. All parts will be referred to in these instructions as labeled in the drawing:

A- Nosecone B-Nose Cone Shoulder C-Upper Airframe D-Upper Airframe Shoulder E-2nd Stage Fins/Sustainer
F- 1st Stage Fins/Booster G-Motor Mount H-Motor Retaining Ring (Not Shown)



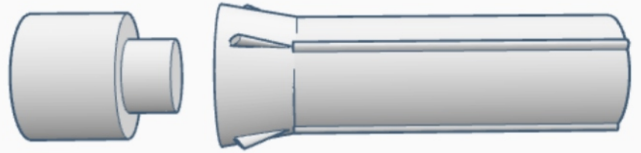
1

Carefully sand the nosecone shoulder (B) until it is a smooth fit into the nosecone (A). Glue the parts together with super glue.



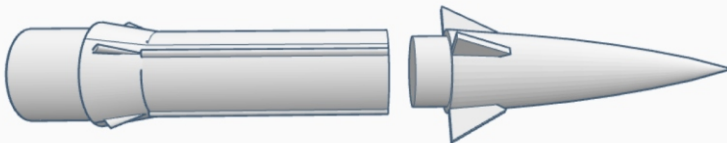
2

Carefully sand the upper airframe shoulder (D) until it is a smooth fit into the upper airframe (C). Glue the parts together with super glue.



3

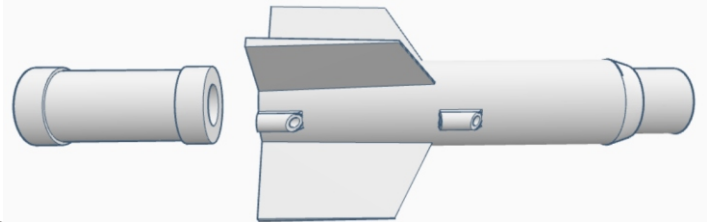
Slide the nosecone onto the upper airframe. Do not glue these parts together until the proper amount of nose weight has been added to the upper airframe.



DO NOT GLUE

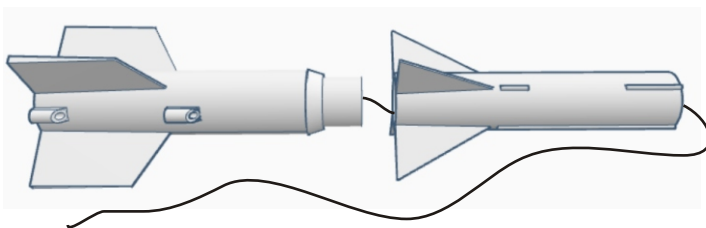
4

Glue the motor mount (G) into the 1st stage fin/booster unit. Make sure it is flush with the base of the booster.



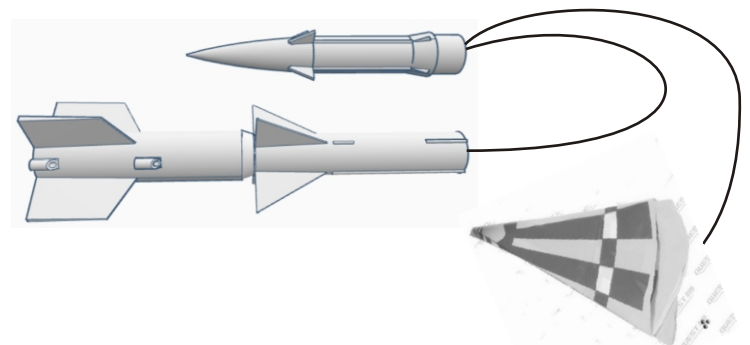
5

Tie a 3 foot piece of Kevlar cord to the shock cord attachment strut at the top of the booster. Fish the cord through the upper stage fin/sustainer then glue the two parts together. Make sure you carefully align the upper stage fins with the booster fins.



6

Tie a 2 foot piece of Kevlar cord to the shock cord attachment mount at the base of the upper airframe nosecone assembly. Tie the cord from the booster to the upper airframe nosecone assembly. Attach a 18 to 24 inch parachute as shown.



Finishing your model:

Sand any rough areas on the model with 220 grit wet/dry sandpaper. Dry sand at first then follow with wet sanding until all surfaces are smooth to the touch. Give the model a nice coat of gray automotive filler primer and allow to dry. Repeat the sanding steps then give the model a final coat of grey primer. Follow this up with wet sanding using 400 grit. Dry and spray primer between sanding sessions and you should have a nice finished surface for painting.

1/24th Scale Nike Zeus B Flying Model Rocket

PAINT AND DETAIL; THE MODEL AS SHOWN BELOW:

The model should be painted a flat white. The first photo shows a paint scheme similar to the original Cox model. Unfortunately the upper stage lower airframe is covered in a protective blanket and the paint details are not visible. The second photo shows a more updated paint scheme. The US ARMY lettering is in red and the roll pattern markings are black.



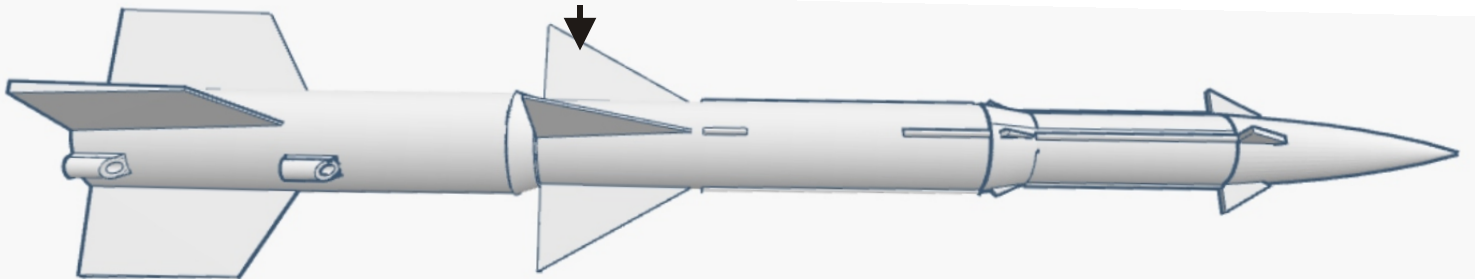
IMPORTANT!

IMPORTANT!

IMPORTANT!

Put a rocket motor in the model then add clay (pack it tightly with a dowel stick) or epoxy to the inside tip of the upper airframe nosecone section until the model balances at the required center of gravity (CG) as shown below. Failure to do so will result in a unstable flight that could injure someone, damage personal property and damage the rocket!

CG-Center Of Gravity



Flight Prep:

Use recovery wadding and carefully pack your parachute. Use an Estes D12-5 motor for your first flight. Place the motor retention ring on the motor and orient the tabs on the ring to align with the fins. Carefully insert the two motor retention screws into the model through the tabs. Do not over tighten the screws. Insert an ignitor in the motor per the motors instructions.

Recommended motors for this model are: Estes D12-5 or 7 and RMS 24 mm E11 BT-5 or 7. Estimated altitude for these motors is 1075 feet. Use a software program such as ROCKSIM to model the rockets flight if higher performance motors are used. Please follow all local laws and the NAR Model Rocketry Safety Code when flying this model. Fly safe and have fun!