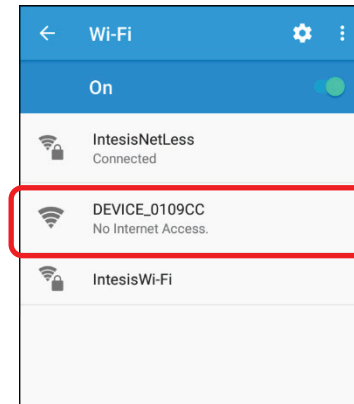


## DOWNLOAD AND CONNECT



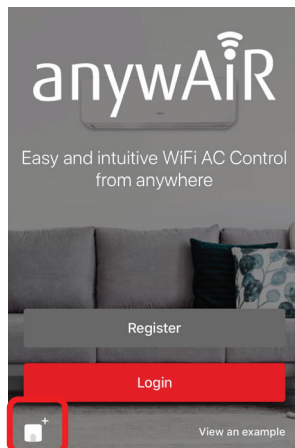
**STEP 1**  
Download the application from Google play or App Store. Direct access to download links can be found at [myanywair.com](http://myanywair.com)



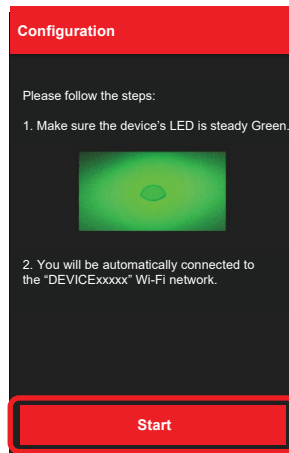
**STEP 2**  
Visit the wireless settings section of your wireless device (smartphone, tablet or laptop) and connect to the network generated by your device (DEVICE\_xxxxxx).

Apple, the Apple logo, iPhone and Siri are trademarks of Apple Inc., registered in the U.S. and other countries. App Store is a service mark of Apple Inc. Amazon, Alexa and all related logos are trademarks of Amazon.com, Inc. or its affiliates. ©2019 Google LLC All rights reserved. Google Play™ and Google Assistant™ are trademarks of Google LLC. Other trademarks and tradenames are acknowledged to be the copyright of their respective holders.

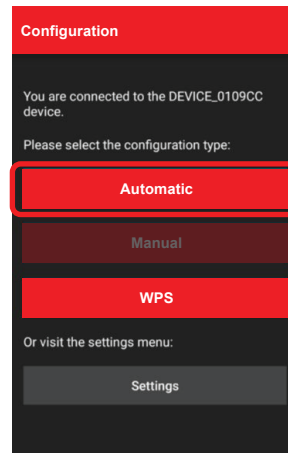
# Wi-Fi CONFIGURATION



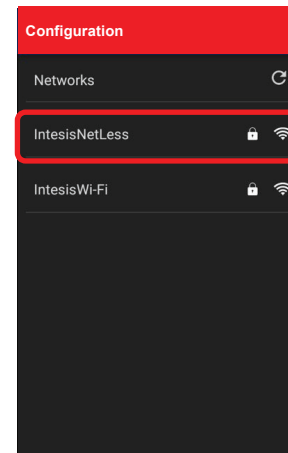
**STEP 1**  
Select the Add Device icon in the bottom left corner of the screen to begin your setup.



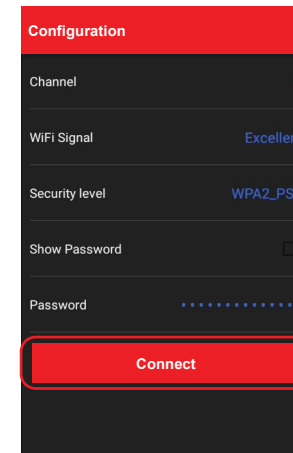
**STEP 2**  
Follow the on screen instructions and then press the "Start" button commence the configuration.



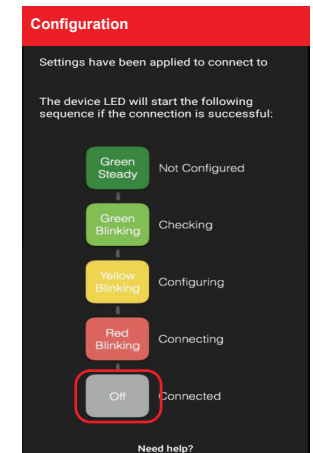
**STEP 3**  
Once the screen displays your connected device, click the "Automatic" configuration button.



**STEP 4**  
Select the desired Wi-Fi network you would like to connect the device to from those displayed on screen.

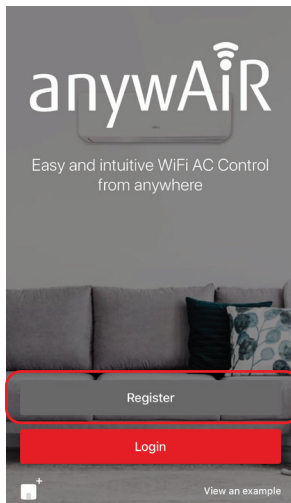


**STEP 5**  
Enter your Wi-Fi password into the password field and then click "Connect".

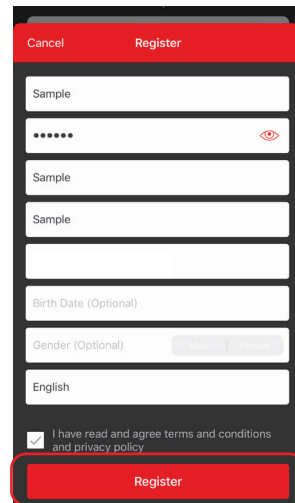


**STEP 6**  
The LED on the device will change colour according to it's stage in the configuration process. Once the device is successfully configured to the Wi-Fi network, the LED will turn off.

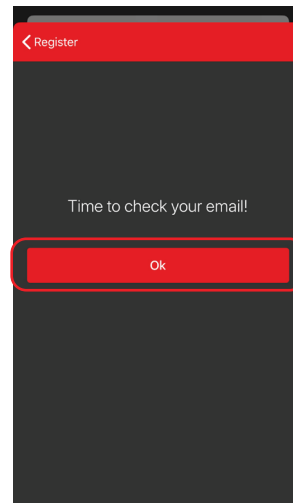
### ACCOUNT SETUP



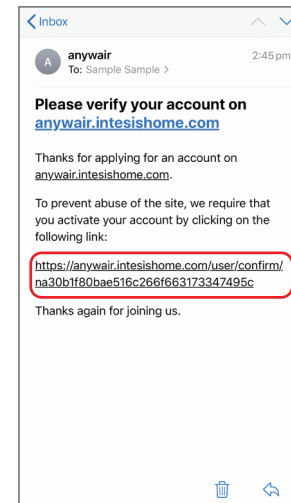
**STEP 1**  
Click the "Register" button.



**STEP 2**  
Complete the form and press "Register"



**STEP 3**  
Click the "OK" button.

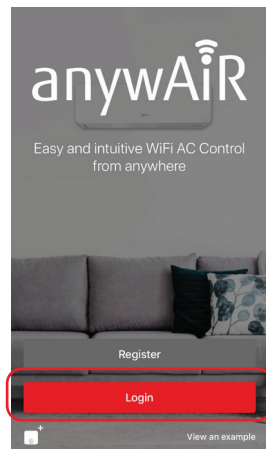


**STEP 4**  
Verify your account by clicking the url in the email.

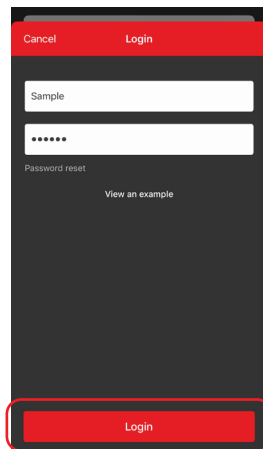


**STEP 5**  
Your account is now successfully activated.

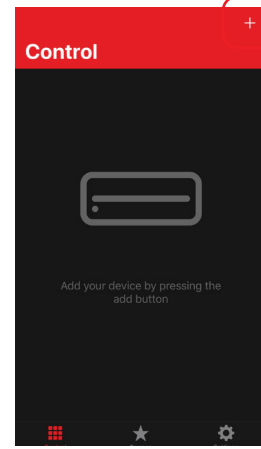
### DEVICE REGISTRATION



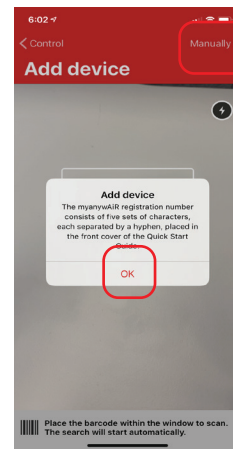
**STEP 1**  
Click the "Login" button.



**STEP 2**  
Enter your username and password then press "Login".



**STEP 3**  
Click the "+" symbol in the top right corner to add a device.



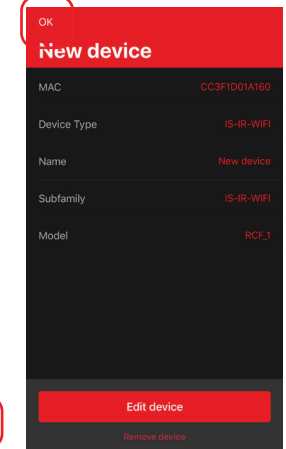
**STEP 4**  
Click "OK" on the pop up.



**STEP 5**  
If scanning the barcode, please ensure to use the barcode on the sticker, not on the unit. Alternatively, you can add the registration number by clicking "Manually".



**STEP 6**  
If entering registration number manually, populate the fields then click "Add device".



**STEP 7**  
Once device is added, click "OK" in the top left corner to complete.

## IR CONFIGURATION

**STEP 1** Push the button on the rear of the device for 3 seconds.  
The LED will turn white.

**STEP 2** Pick up the infrared wireless remote control and push the On/Off button pointing to the device.



If configuration is **OK**, the device LED will blink green.



If configuration is **not OK**, the device LED will blink red.  
Repeat the process from step 1 and check our compatibility\*  
list or visit [myanywair.com](http://myanywair.com) for more details.



\*For compatibility visit [myanywair.com](http://myanywair.com).

### POSITION DEVICE

There are several installation and placement options for the anywAiR technology Wi-Fi device. It can be installed side-by-side with the AC unit (case A), under the AC unit (case B), in front of the AC unit (case C) or on a desktop position (case D).

