



INSTALLATION GUIDE

UltraSwing™ Multi-Fit



Congratulations on your UltraSwing! You're only a few steps away from hitting the trail.

WARNING: Never exceed the 250 lbs total weight rating of the UltraSwing. In severe off-road application we recommend reducing the total weight to 150lbs. UltraSwing is tow rated to 10,000 lbs (1,000 lb tongue). Never exceed your vehicle's towing capacity. Subtract the weight of the UltraSwing (70 lbs) as well as the weight of your spare tire and all other products mounted to the UltraSwing to determine your vehicle's available tongue weight.

Installing the RIGd UltraSwing on your vehicle

1. Grease the sides of the UltraWedge (Figure 1)
2. Install UltraSwing into hitch
3. Check to make sure the hole the inner and outer hole are symmetrically aligned (Figure 2)
4. Tighten UltraWedge using a $\frac{3}{4}$ " socket and 12" socket extension (Figure 3)
5. Tighten to 85 ft/lb



Figure 1



Figure 2



Figure 3

WARNING: The UltraWedge is only designed to eliminate wobbling in the receiver. Always use a hitch pin.

NOTE: The UltraSwing was fixtured to have several degrees of upslope towards the passenger side. This is in order to provide maximum departure angle and improved aesthetics when tire or other accessories are mounted to the carrier.

**Toyota 6-bolt Wheel Plate w/
corresponding hardware**



**Multi-Fit Wheel Plate w/
corresponding hardware**



Full-Size Wheel Plate w/ corresponding hardware



Setting Multi-Fit Plate Lugs

Before mounting your wheel plate to the UltraSwing, set your top lug to the proper height. (Figure 4)

1. Place the wheel plate on the backside of your rim and align the three lug holes. (Figure 5)
2. Tighten the top lug (Figure 6)
3. Continue on to mounting the wheel plate to the UltraSwing

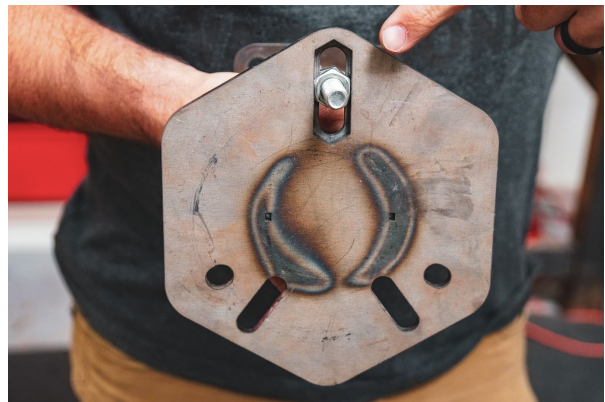


Figure 4



Figure 5



Figure 6

Installing Wheel Plate

For 32-inch or smaller tires or plan to run an Ultraplate we recommend starting at the lowest set of holes.

For 33-34-inch tires we recommend to use the middle set of holes.

For 35-inch tires we recommend to use the highest set of holes.
(See Figure 7)

When mounting your wheel-plate and be sure the bolts and washers are mounted from the back side..

Tighten wheel support plate bolts to 75 ft/lb



Figure 7

Please note that the bolts and washers go through the backside.

(This will ensure maximum clearance for installing an UltraPlate in the future.)



Please note that the full size wheel plate uses 2 washers on the top right bolt and the thin Nylock nut



License Plate Relocation

Your UltraSwing Multi-Fit includes a license plate relocation bracket. (See Figure 8).

Extra thick spacers can be used to space the plate as needed. (Figure 9)

Completed install of the license plate bracket (Figure 10)



Figure 8



Figure 9



Figure 10

Compression Latch Adjustment Washers

Your latch has been pre-adjusted by RIGd. However, if you'd like to add more compression to the latch silver washers have been included to fine-tune the feel of the latch. Do not exceed 2 washers. (Figure 11)

1. Remove bumper bolt using a 5/32" or 4mm allen wrench
2. Add or remove washer
3. Reinstall



Figure 11

Limited Lifetime Warranty

RIGd Supply offers a Limited Lifetime Warranty on the structure of each UltraSwing to the original purchaser.

Exclusions

1. UltraSwings that have been abused, crashed, altered, modified, or installed on vehicles other than those approved by RIGd Supply
2. Damages and shipping charges
3. Pivot washers, bolts, nuts, and washers. (These parts are subject to wear and are not considered defective when worn)
4. Cost of the original installation, removal, or reinstallation

Replacement Program

RIGd Supply will make replacement parts available to the original owner at a minimal charge in the event of a crash or other non-warranty situation for the life of the UltraSwing.

Contact

RIGd Supply
1533 W Oranewood Ave
Orange, CA 92868
support@rigdsupply.com
714-820-9444