



INSTALLATION GUIDE

Hi-Vert™ Hi-Lift Jack Mount



Congratulations on your Hi-Vert! You're only a few steps away from hitting the trail.

Installing the Hi-Vert™ to the UltraSwing™

1. Place the back bracket on the UltraSwing. Note, fitment is snug to ensure safe and movement-free mounting and a bit of tapping with a rubber mallet may be required. Use grease to avoid excess scratching of the powder coat. (Figure 1)



Figure 1

2. Insert all bolts but do not tighten until all bolts have been installed. (Figure 2-4)



Figure 2



Figure 3

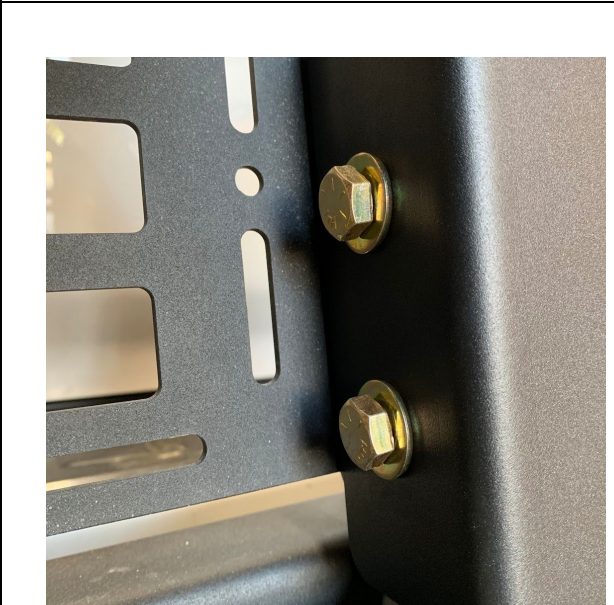


Figure 4

Note: Insert all bolts before tightening.

3. After all Hi-Vert bolts have been tightened place your Hi-Lift Jack on the foot and secure using the two wingnuts, one attaching the Hi-Lift foot to the base plate, and one on the vertical arm of the jack. Ensure that lock washers are fully compressed. (Figure 5-6)



Figure 5



Figure 6



Congratulations, your Hi-Vert™ is now installed!