

CARRS4X4

DISCOVERY 2 INTAKE TUBE INSTALLATION GUIDE

If your Discovery 2 is like most, your intake tube probably looks like a rat's nest. The genuine tube was made of a fabric wrapped around wire and after time this fabric deteriorates. This not only lets hot air into your air box but can allow water to get into the air box if fording a waterway. The only solution up to now was to buy the entire air box assembly, but you are still left with an inferior fabric tube.

Once you have bought one of our new and improved silicone intake tube kits, made from high temp silicone, you will need to install it.

For the install, you could probably do it with your teeth and a rock, but we suggest the following tools:

- 1- Flat head screwdriver
- 2- 10 mm open end wrench
- 3- Brake cleaner or other mild solvent (rubbing alcohol)
- 4- Dirty shop rag
- 5- And a pocket knife, just because you should always have one



Next you will open your hood and locate the air box assembly.



Using the 10mm wrench undo the 2 plastic nuts on each side at fender junction:



Be very cautious not to molest the small line going into the radiator at the top position shown here, if it is bent it can break the small plastic nipple on your radiator, that's no Bueno.



Undo the three clips on the air box lid as well as the 2 clips joining the MAF tube to the air box lid and remove the lid.



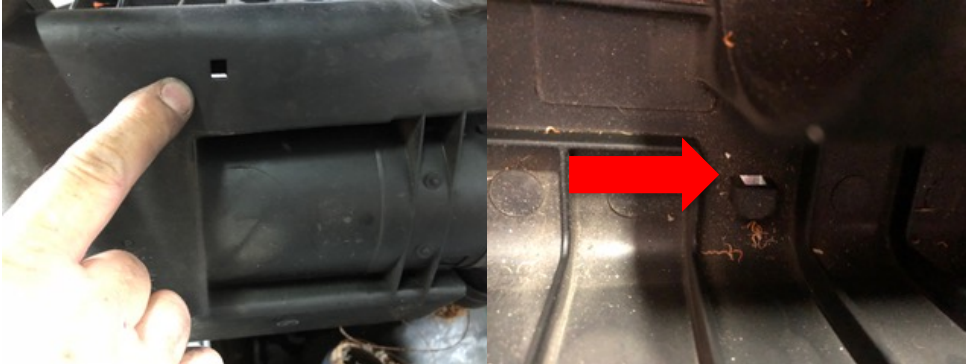
Once the lid is removed, pull up on the power steering reservoir and push out of the way



Now pull up on lower airbox assembly to remove entire unit.



Remove the Genuine Land Rover Rat's nest at air box and fender elbow sides
If you are planning on doing water crossings it is advisable to use some silicone based sealant to plug up this hole on the lower airbox lid. Two attached photos show the outside and inside position.



Take the fender elbow and remove the foam seal with adhesive back. Clean mating surface with solvent.



Apply one of the 2 silicone gaskets on the inner rim.



*Please note second gasket is for when you are installing a snorkel at the outer fender position.

Now grab the new intake tube and bend the circle worm drive clamps into an oval shape and slide onto the end positions which have recesses for the clamps.



***PLEASE NOTE! IF YOU PLAN ON CROSSING WATERWAYS WE SUGGEST ADDING A SMALL BEAD ON SILICONE SEALANT AT BOTH SILICONE TUBE ENDS TO PLASTIC JUNCTIONS BEFORE TIGHTENING CLAMPS.**



Once both worm drive clamps are tight, refit lower air box, be careful of the “no Bueno” radiator hose that can ruin your day.



Refit the lid paying close attention to the “no Bueno” radiator hose.



Congratulations, you are done!