



2013-2018 Fusion BIG MOUTH Intake Installation Guide



Kit Contents

Please review this document before attempting installation.

You will need basic hand tools and about 2 hours of installation time.

Please review the table below and make sure you have received the kit contents.

Kit Contents

Description	Size	Length	Qty	Material
-------------	------	--------	-----	----------

Countersunk Screws	#10-32	NA	2	Stainless steel
--------------------	--------	----	---	-----------------

Big Mouth Main Body	NA	NA	1	ABS
---------------------	----	----	---	-----

Big Mouth Inlet with Flare	NA	NA	1	ABS
----------------------------	----	----	---	-----



Tools You Need

Flathead screwdriver
or dental pick



3mm drive
Allen wrench



8mm box wrench
(ratcheting if possible)



Cut off wheel **or** flat head style
wire cutters, either may work



OR



7mm, 8mm and
10mm sockets
and driver



Stock Components Removal

Remove the radiator cover

Remove the clips and screws holding down the radiator cover. Use a flat head screwdriver or a dental pick.



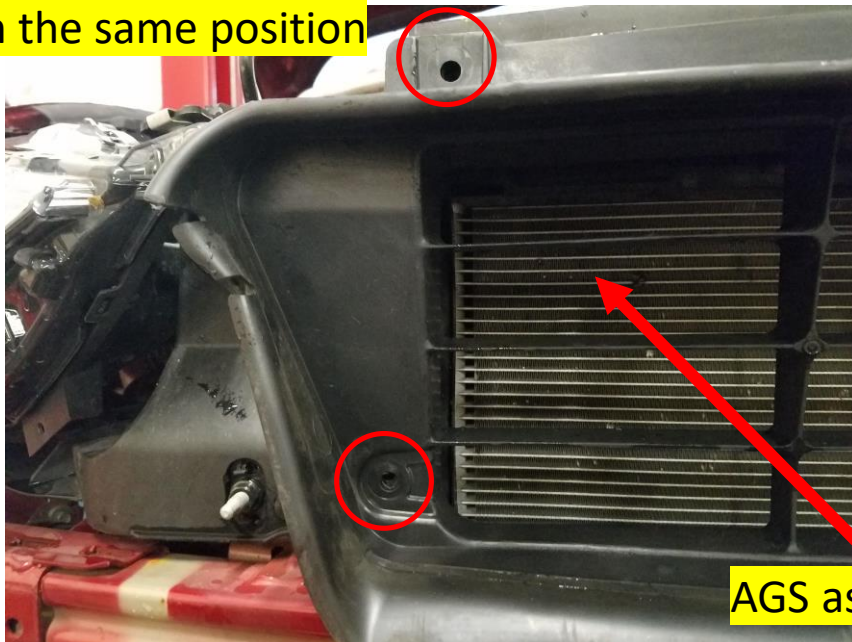
AGS Removal

For best instruction on bumper removal, use YouTube videos or Forum guides to guide you on bumper removal.

Search the term “2017 Fusion Sport or Ford Fusion bumper removal”.

The AGS assembly will need to be removed prior to installation. The AGS system can be removed by unscrewing various fasteners and removing clips from both sides and underneath the assembly.

There are two more screws on the driver side in the same position



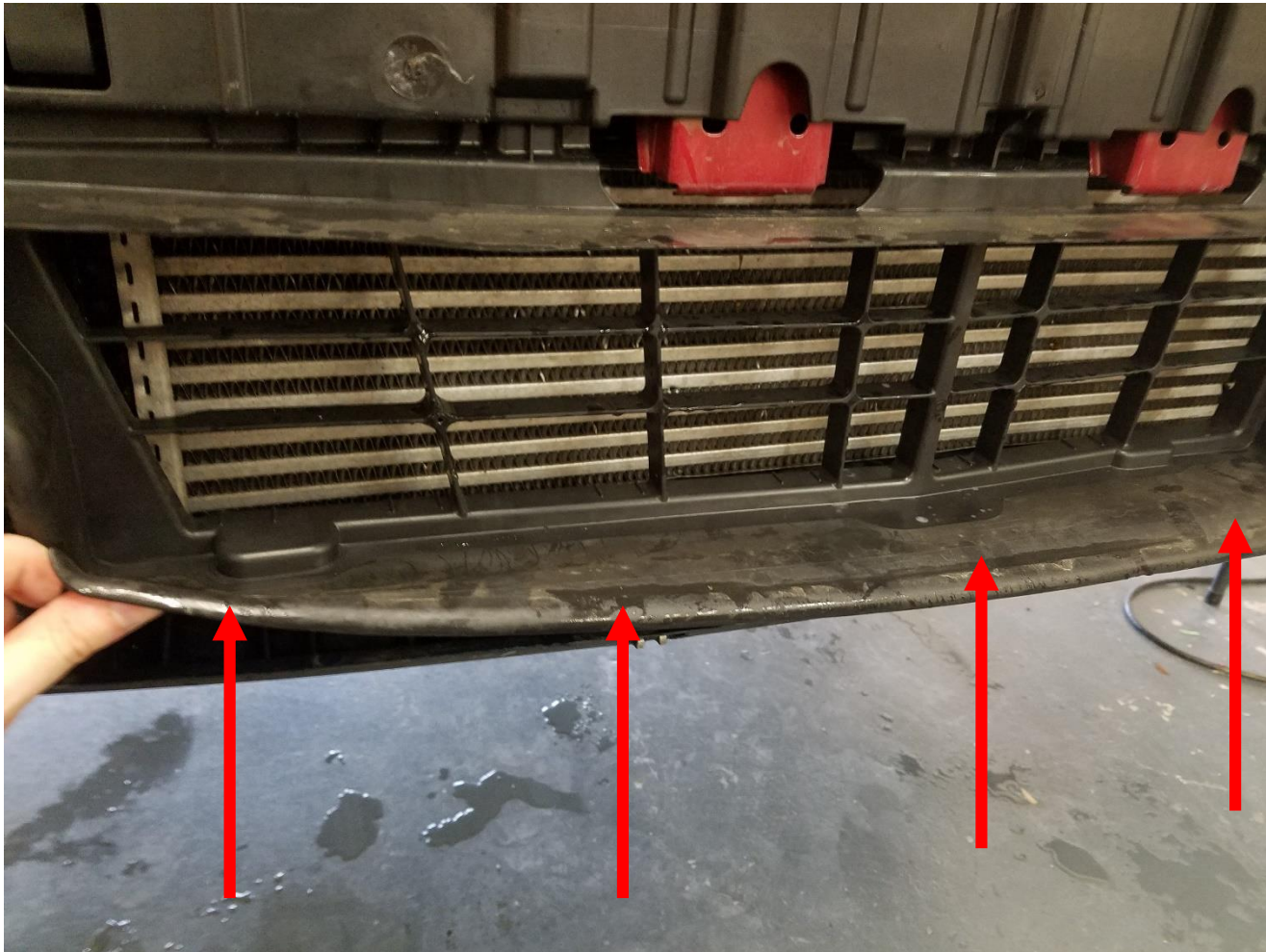
Remove the pull out clips from both sides



AGS assembly

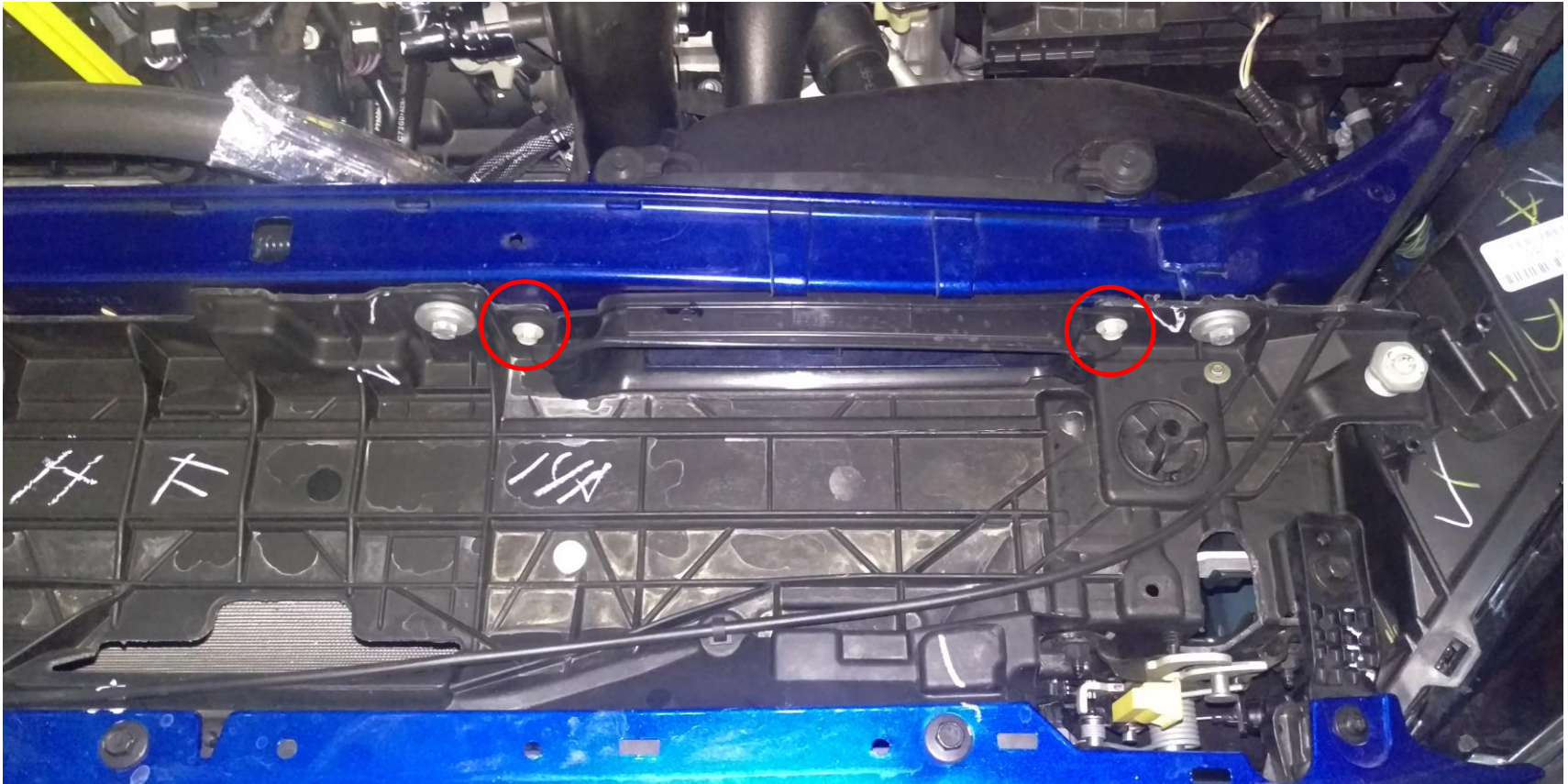
AGS Removal

Underneath the AGS assembly flap are more fasteners, remove them.



Stock Components Removal

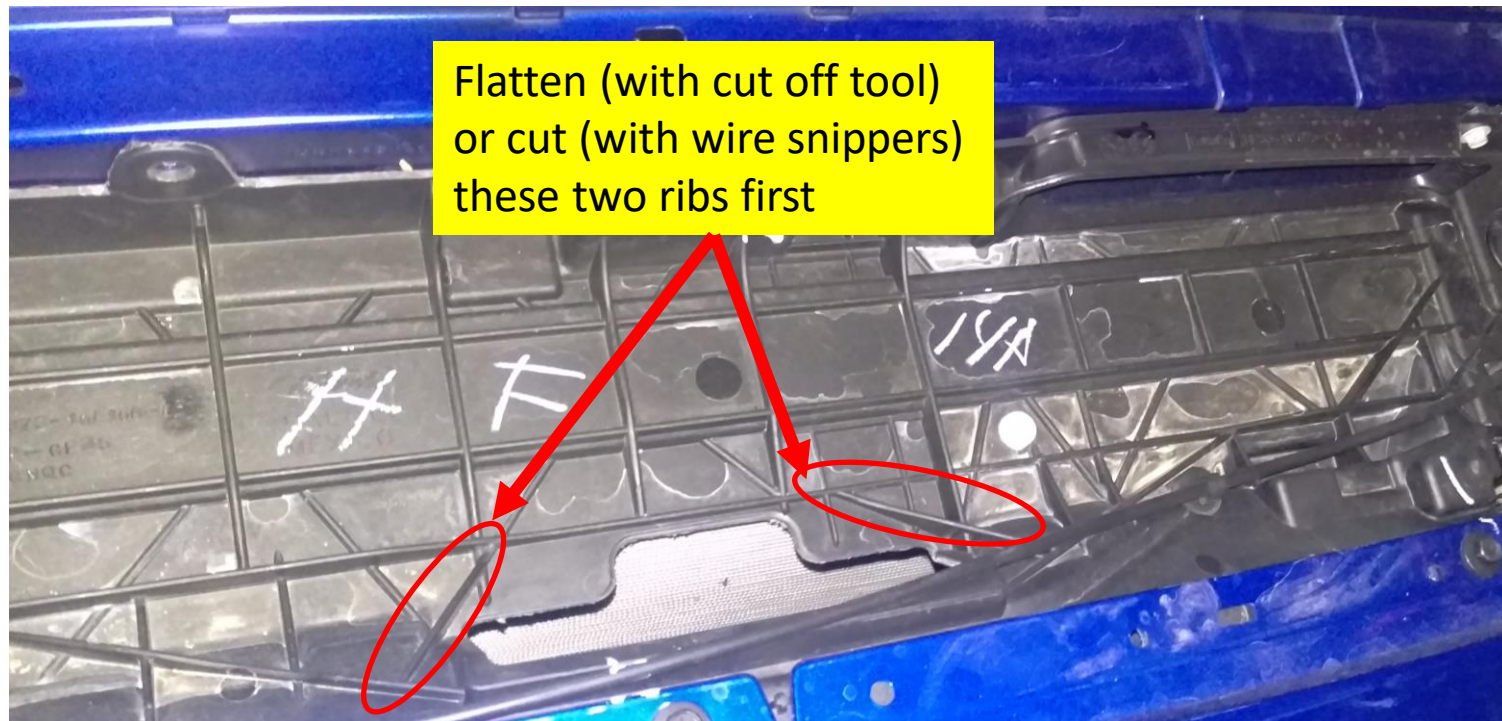
Remove the stock inlet tube by removing the fasteners here, using the 8mm box wrench. Do not discard these screws as they will be re-used for installation.



Trimming

Trimming some of the ribs located on the radiator cover is required for proper fitment of the BIG MOUTH. It is best to use a Dremel or other cut off tool for this task, although the flat head snippers may work too. The ribs on top of the radiator support (we call this the egg-crate) must be shaved down in certain areas.

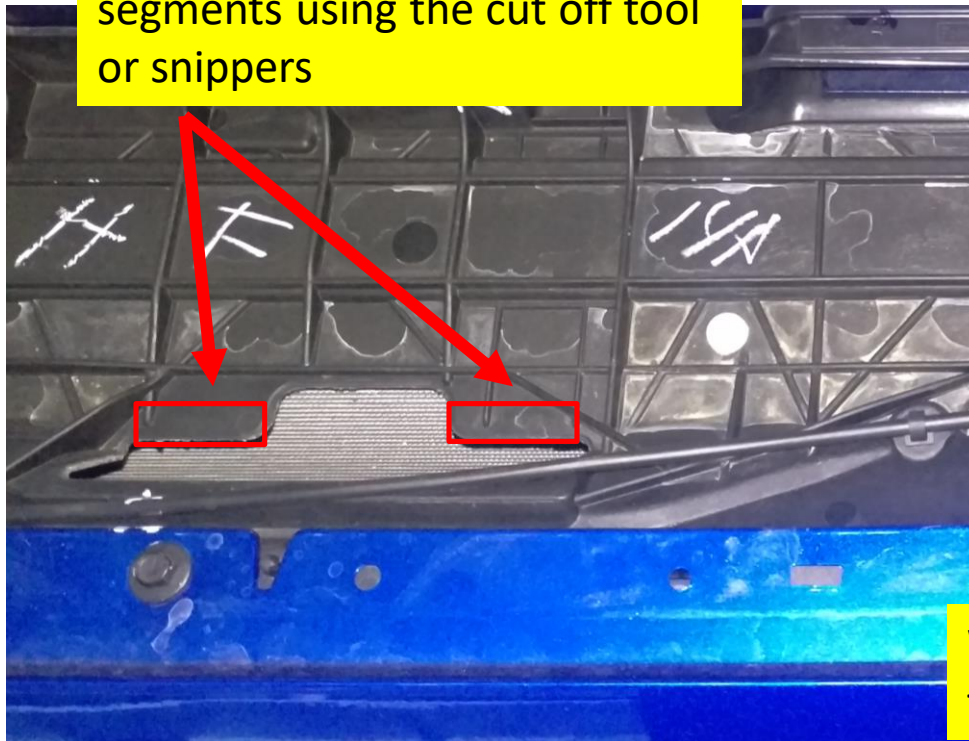
The areas in the next few slides are highlighted to guide you.



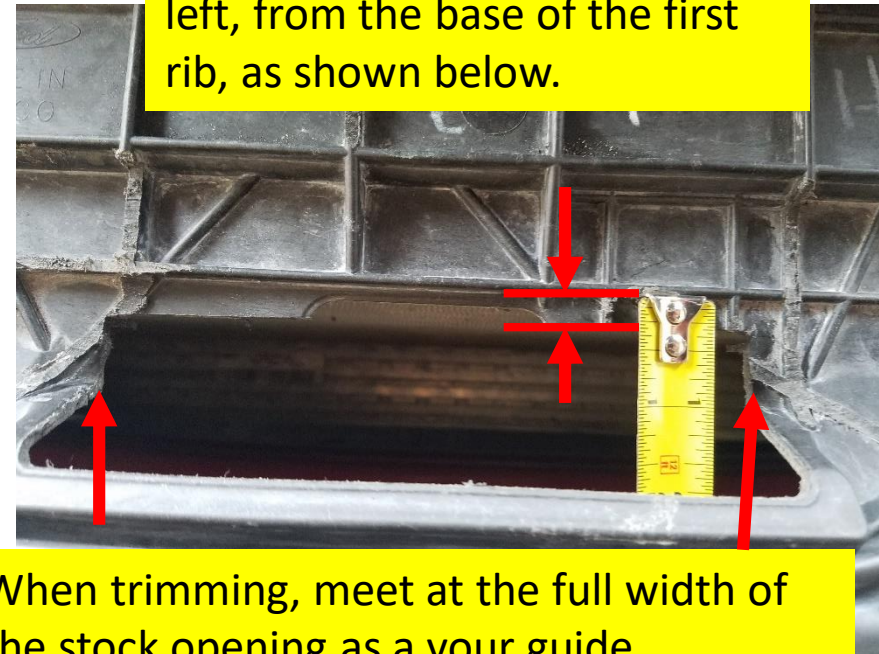
Trimming

You will need to remove material from the stock opening, trim the red boxed out segments shown below.

Remove these rectangular segments using the cut off tool or snippers



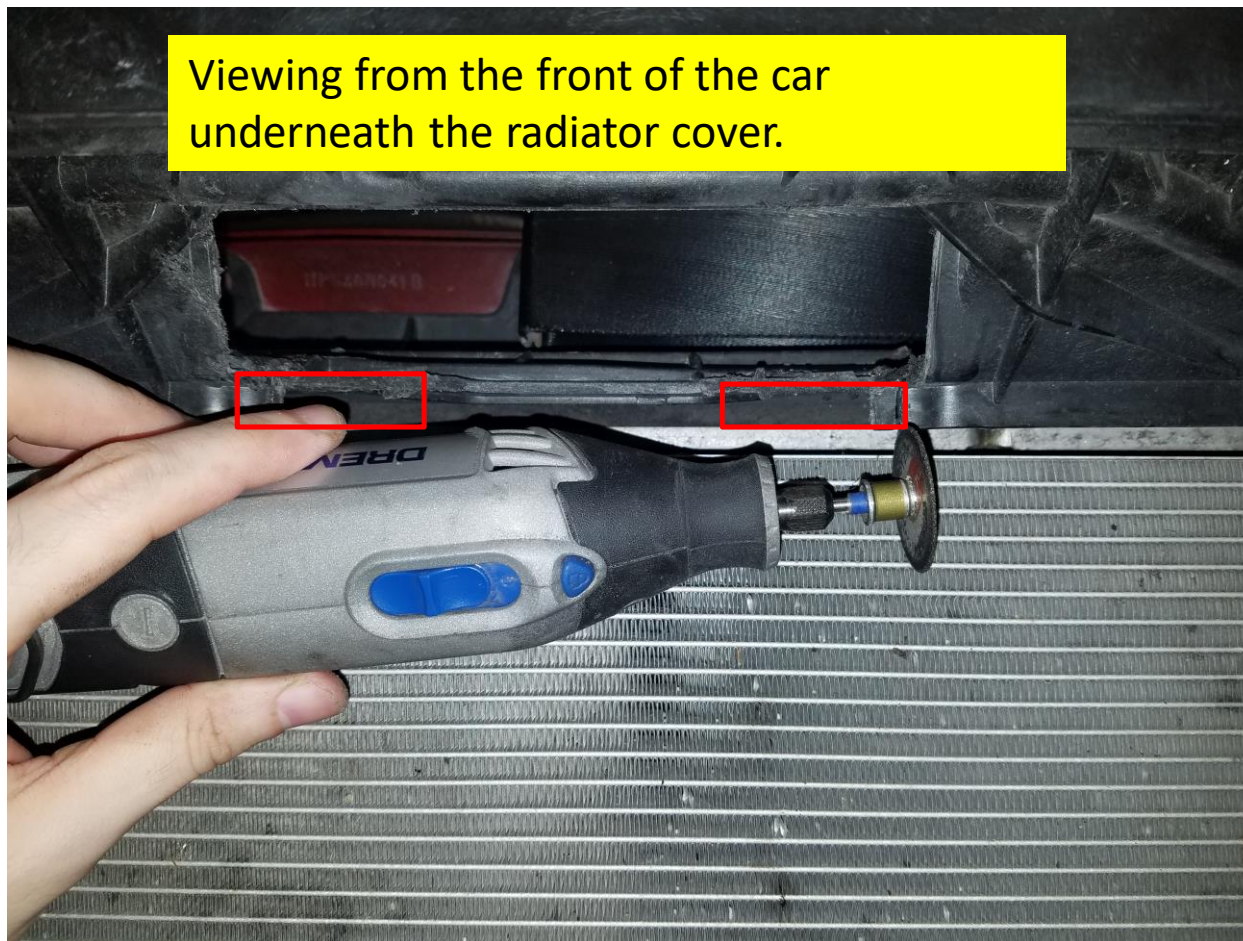
There should be $\frac{1}{4}$ " of material left, from the base of the first rib, as shown below.



When trimming, meet at the full width of the stock opening as a your guide.

Trimming

There are two more vertical tabs you need to trim using the cut off wheel or snippers.



Trimming

Flatten these ribs using the cut off tool or snippers.



Trimming

An example shown below, uses the flat head snippers to remove the ribs, try to get them to be as flush as the base material as possible.





Trimming

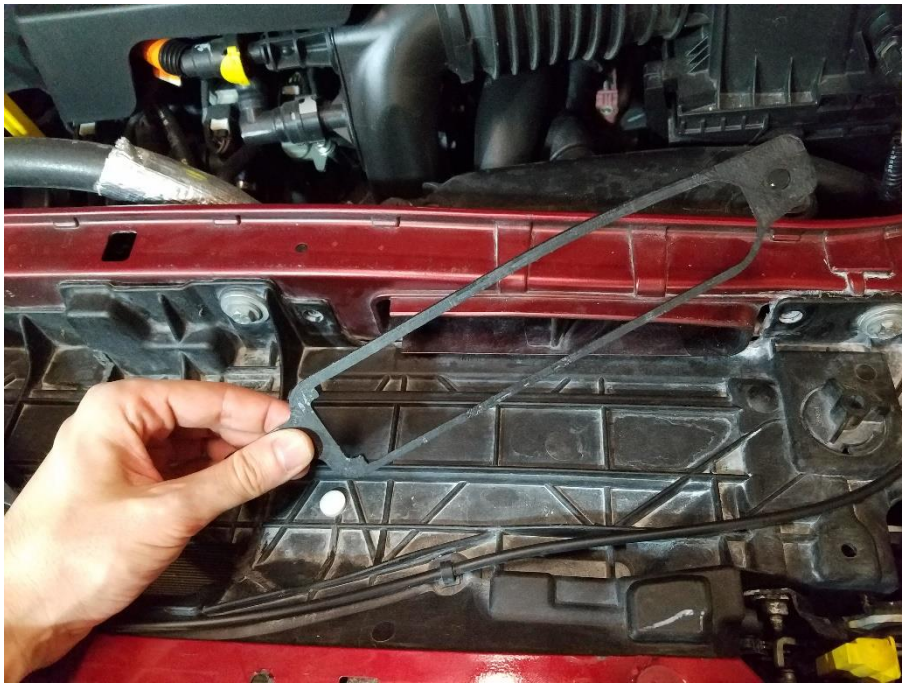
Once you have trimmed the ribs and the tabs, you should be left with an opening that is square (close to it) in shape. It doesn't have to be exact.





Installation

Place the main body spacer over the cowl opening. Next step will be to seat the big mouth, keep the spacer over the cowl when performing the next step.





Installation

Once you have completed trimming, you will be able to drop the big mouth in using the following method. **READ THIS CAREFULLY.**

Holding the big mouth main body in your left hand, you should be able to drop it into the trimmed opening you prepared. It should slide in, you might need to squeeze the big mouth with your left hand to finesse it through.

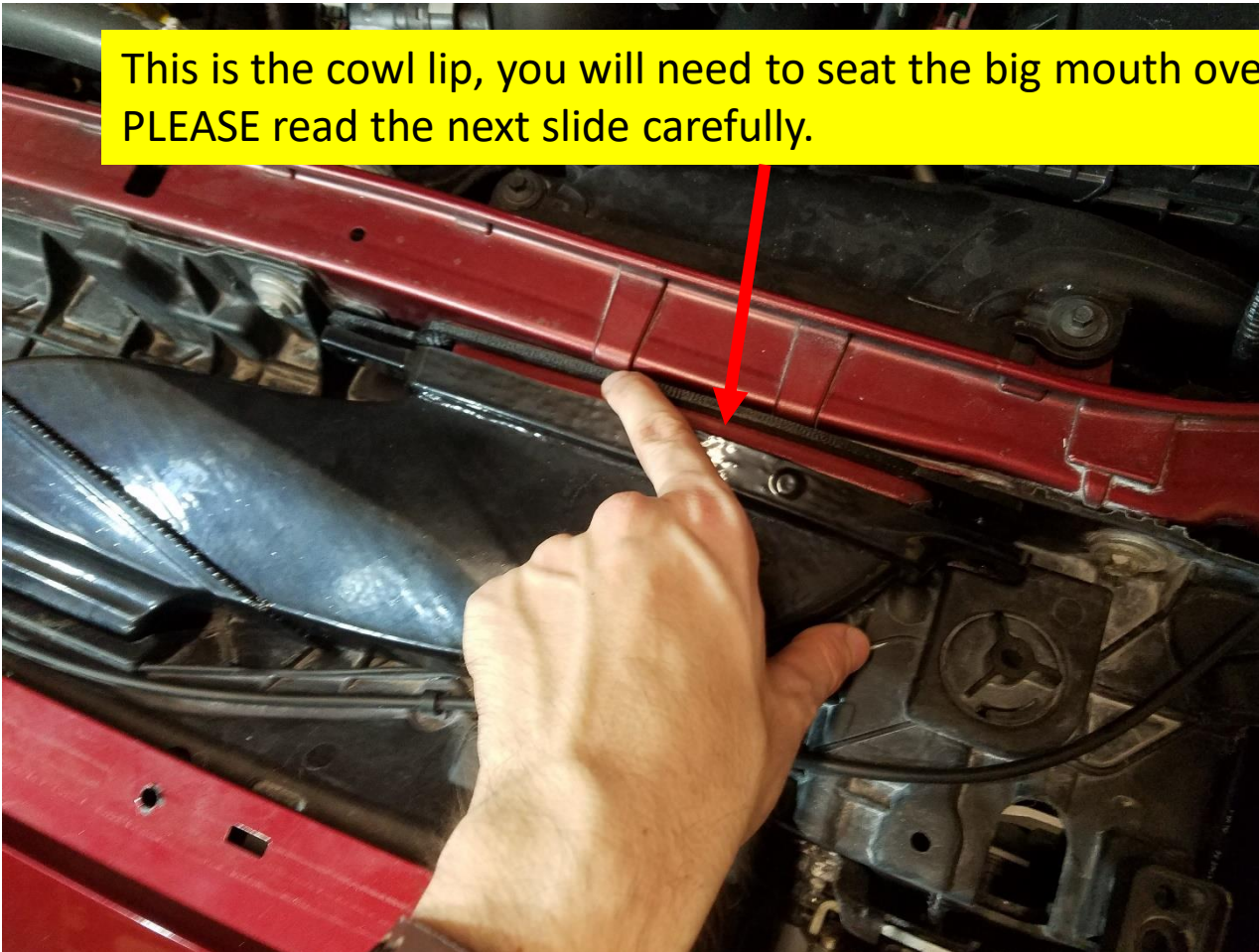
Insert the big mouth, inlet first, into this newly trimmed opening. It may be a little tight, but if there is too much resistance, you need to trim more. You shouldn't need to force it.



Installation

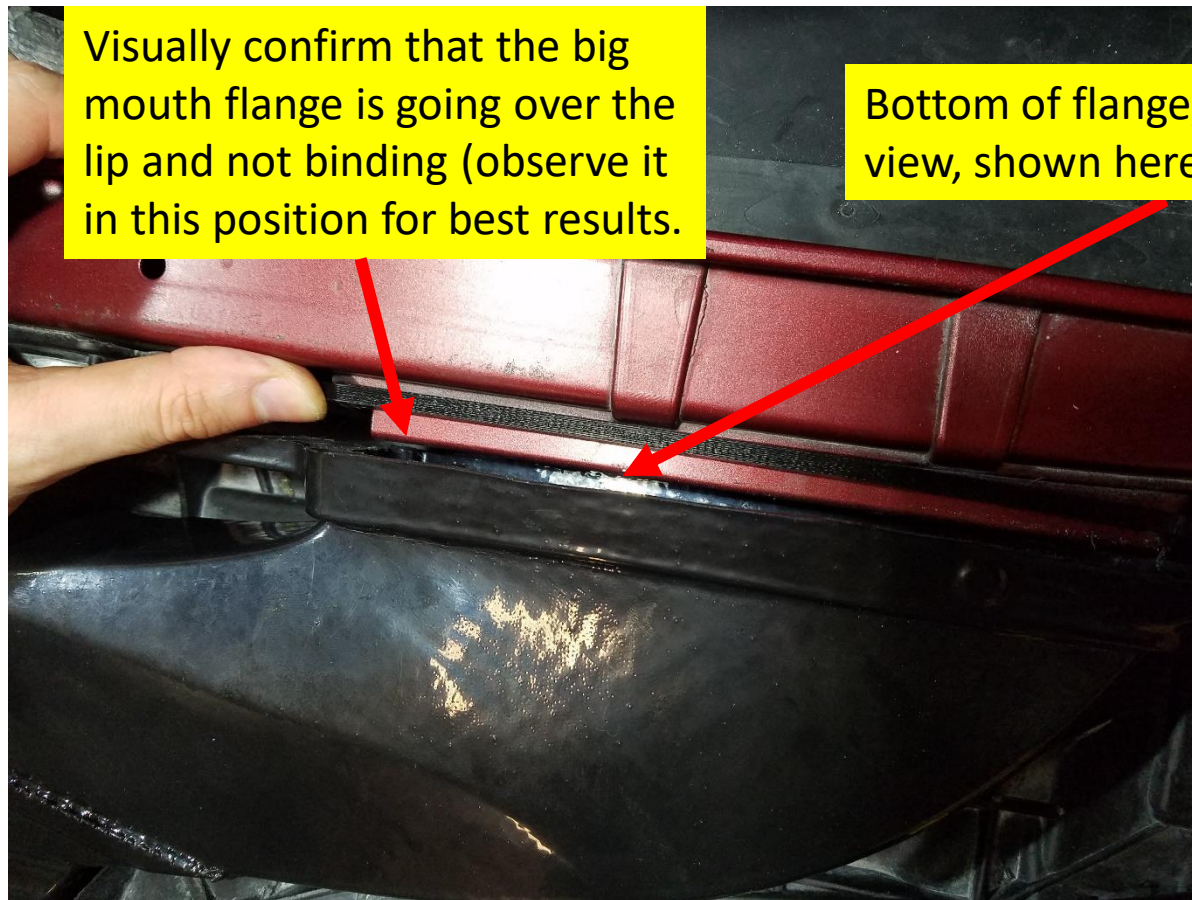
You should now have the body and spacer in place and LOOSE. The next step is to seat the big mouth over the cowl lip.

This is the cowl lip, you will need to seat the big mouth over it.
PLEASE read the next slide carefully.



Installation

Seating the big mouth requires you to visually confirm this one thing. Visually observe that the big mouth flange is going OVER the cowl lip.



Visually confirm that the big mouth flange is going over the lip and not binding (observe it in this position for best results).

Bottom of flange, top down view, shown here for reference

Installation

While you are positioning the flange with your left hand, you may begin to apply pressure to the pressure dot, once the flange clears the cowl, it should fall in easily.

Make sure to inspect that the flange clears the cowl lip during this process



Installation

Insert the 8mm screws you removed from the stock inlet tube, and ensure that everything lines up properly before tightening down. The body should not be under too much stress, torque just enough to close the gap between the space and flange.





Installation

Put the BIG MOUTH flared inlet over the main body inlet and line up the holes on the sides, insert the screws and tighten until snug.
Re-install the bumper in the order it was removed, the installation is complete.

