



**2014-2022+ Toyota 86/FRS/BRZ
BIG MOUTH Ram Air Installation
Guide**



Kit Contents (Full Kit)

Please review this document before attempting installation.

You will need basic hand tools and 2 hours of installation time.

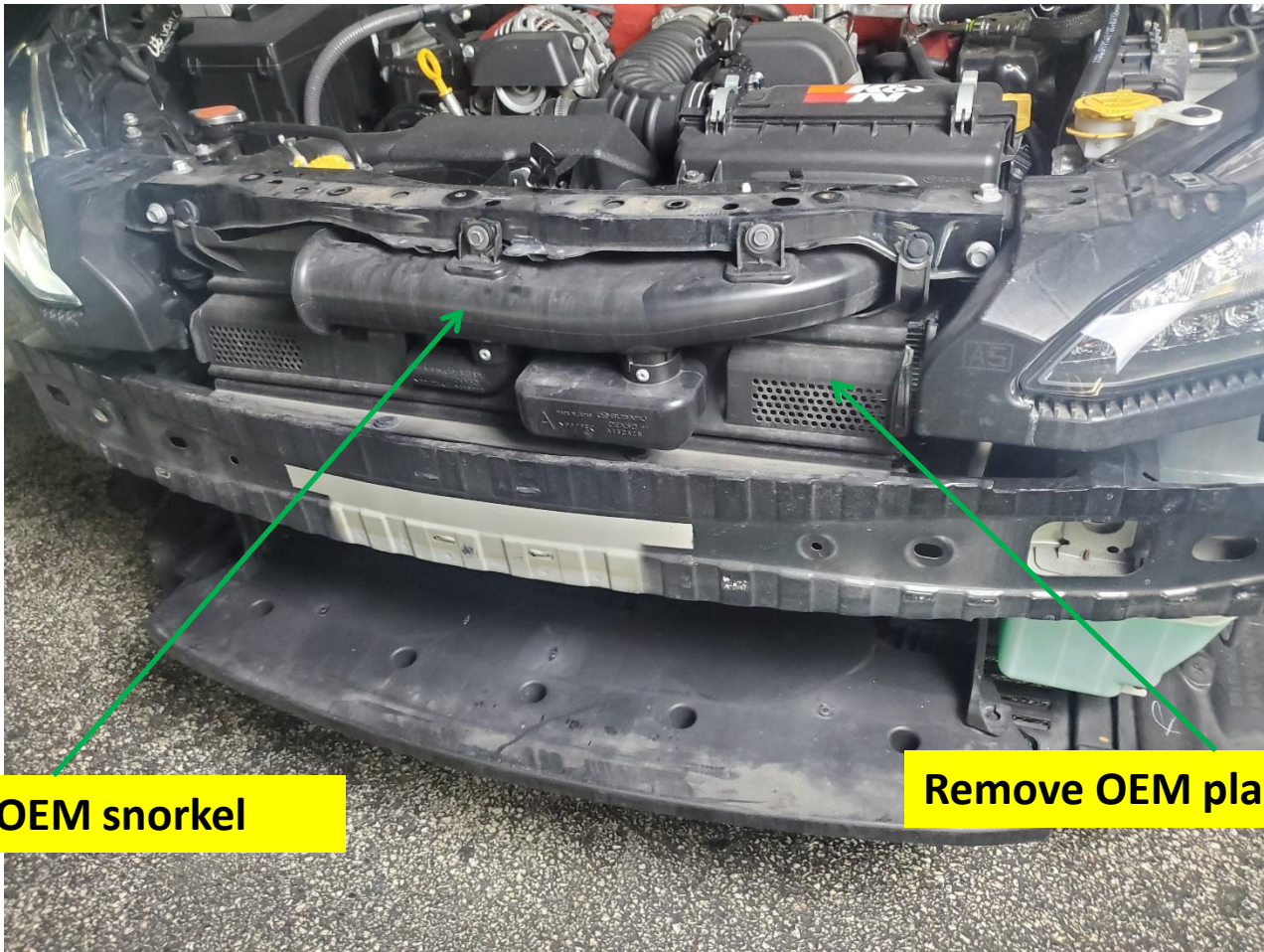
| Kit Contents | Qty |
|------------------------------------|-----|
| M6 x 25mm Cap Screw | 2 |
| #8 x 3/4" Flat Head Phillips Screw | 6 |
| Push Retainer Clip | 1 |
| M6 Lock Nuts | 1 |





Stock Components Removal

It is best to google “how to remove bumper” for your particular trim, after the bumper is removed, you will see the following.



Remove OEM snorkel

Remove OEM plastic plate

Big Mouth Installation

The top of the BIG MOUTH slides into position as shown, DO NOT fasten yet. Keep it loose so the bottom section can easily slide into position.

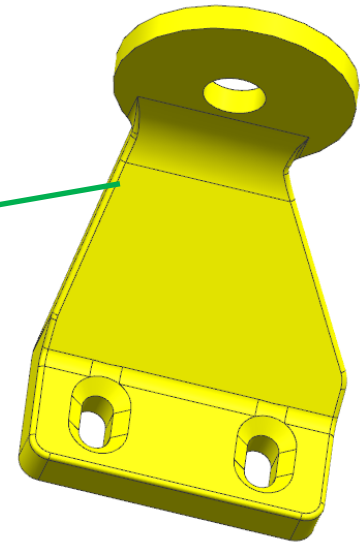


Bracket 3 Installation

Bottom section first needs Bracket 3 to be installed, do not tighten the screws all the way yet. These screws should be left somewhat loose until you position the bottom body correctly.

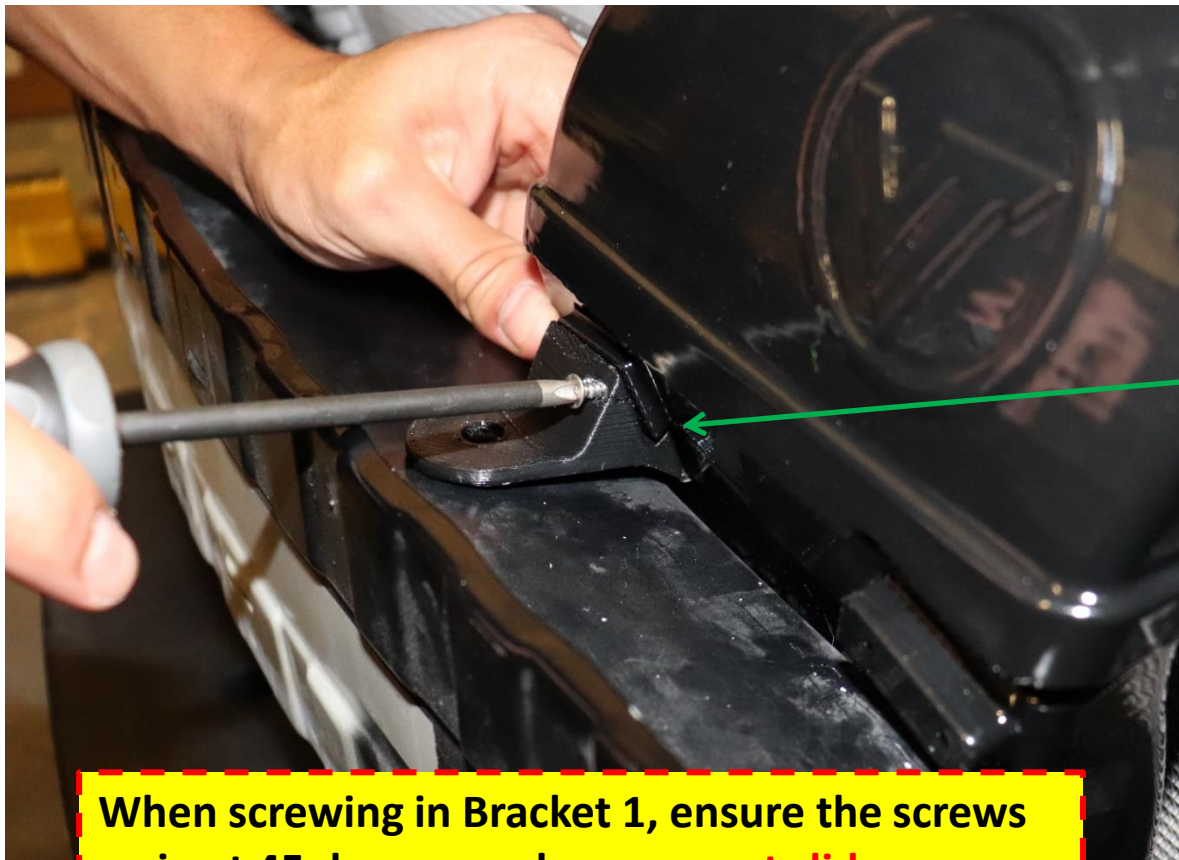


Bracket 3

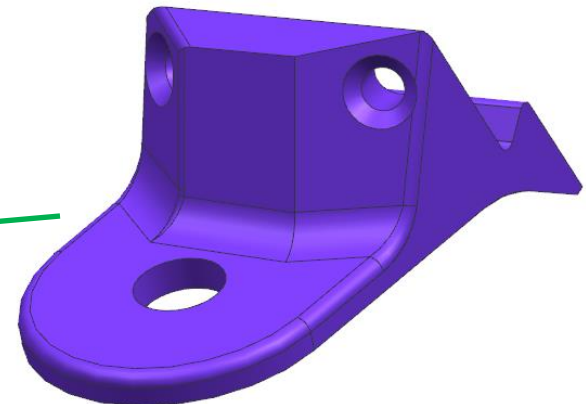


Bracket 1 Installation

Slide the bottom section of the BIG MOUTH into the position as shown, it should tuck under the top half of the BIG MOUTH assembly. Begin to screw in Bracket 1, ensure that the dovetail joint that hooks into the body is secure.



Bracket 1

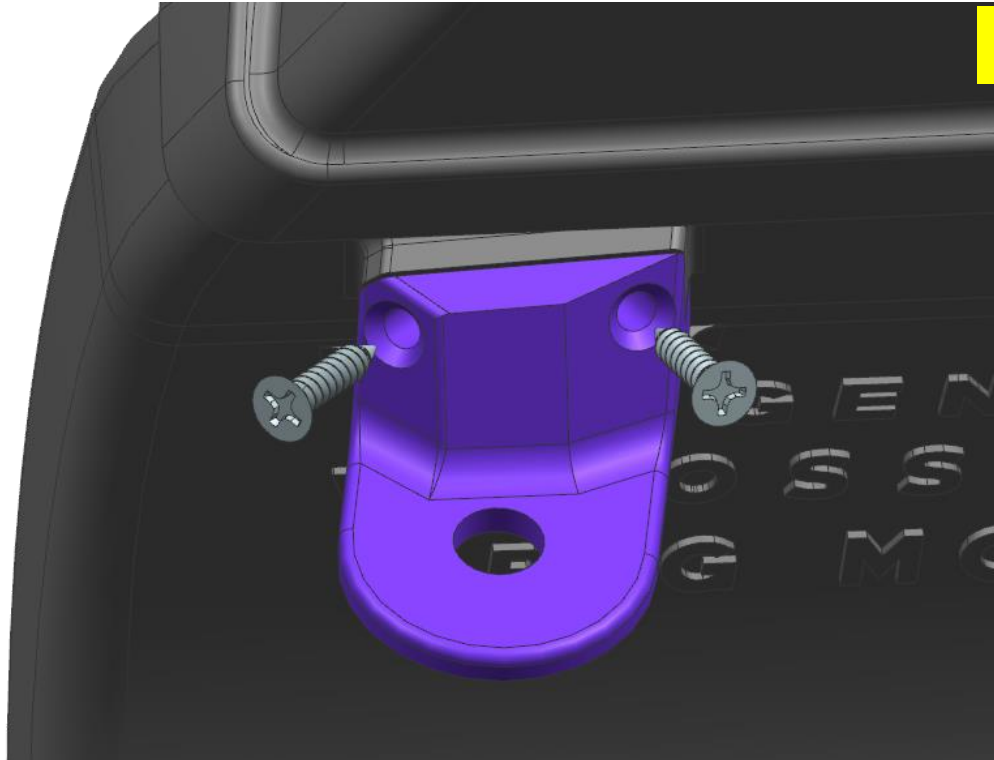


You may slide in bracket 1 from the side so the hook engages the body.

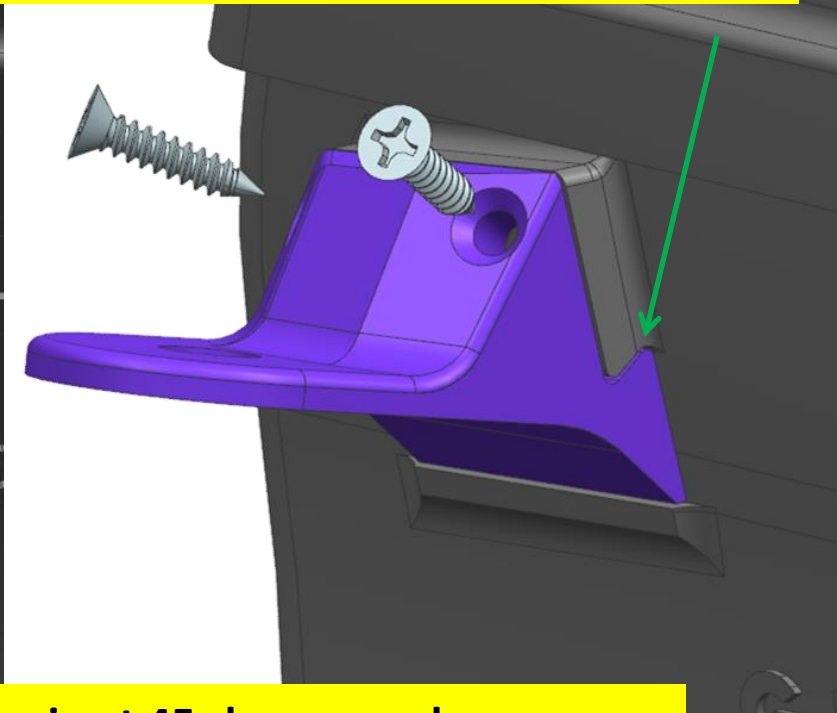
When screwing in Bracket 1, ensure the screws go in at 45 degree angles, see next slide.

Bracket 1 Installation

Note the angle by which the screws must enter the assembly, they will self tap. Be sure to slowly screw them in by hand (do not use an electric drill to drive these screws as you risk mis-aligning them and damaging the body by over-torquing).



Ensure the dovetail hook is engaged.



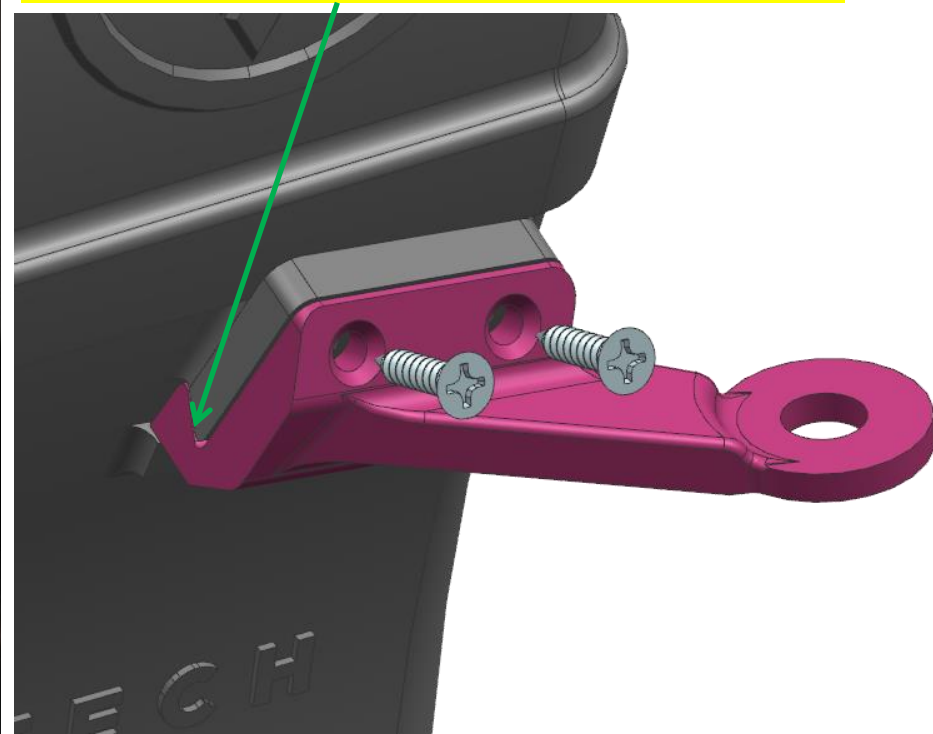
When screwing in Bracket 1, ensure the screws go in at 45-degree angles.

Bracket 2 Installation

Bracket 2 will be installed similarly to bracket 1. Engage the hook and screw by hand slowly, note the 45-degree angle by which to insert the screws. Be patient with alignment.



Ensure the dovetail hook is engaged.



You may slide in bracket 2 from the side to engage the dovetail hook.

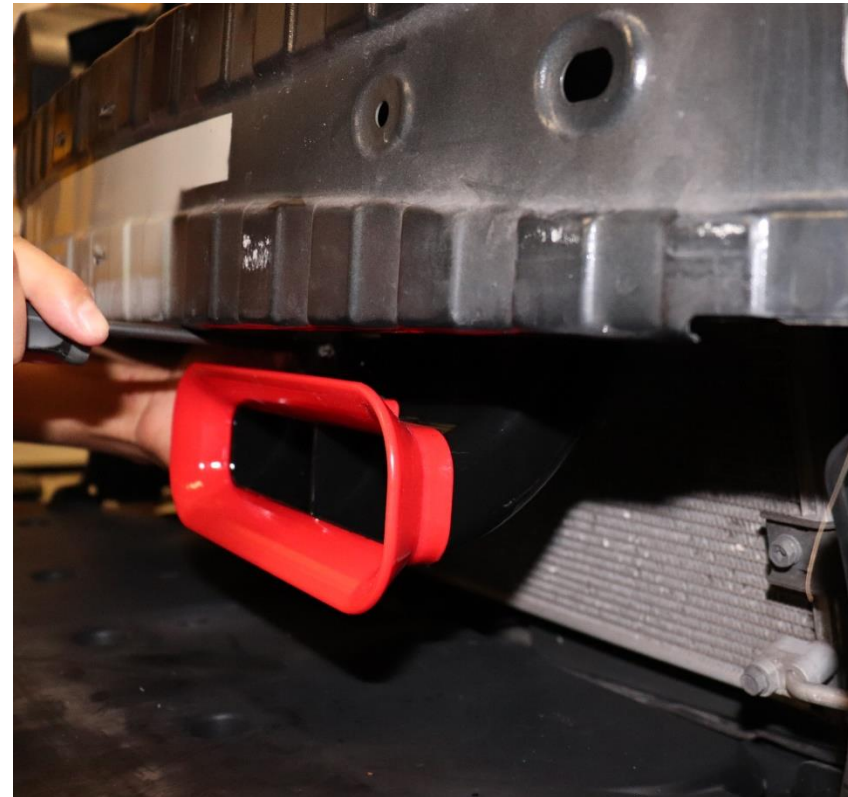
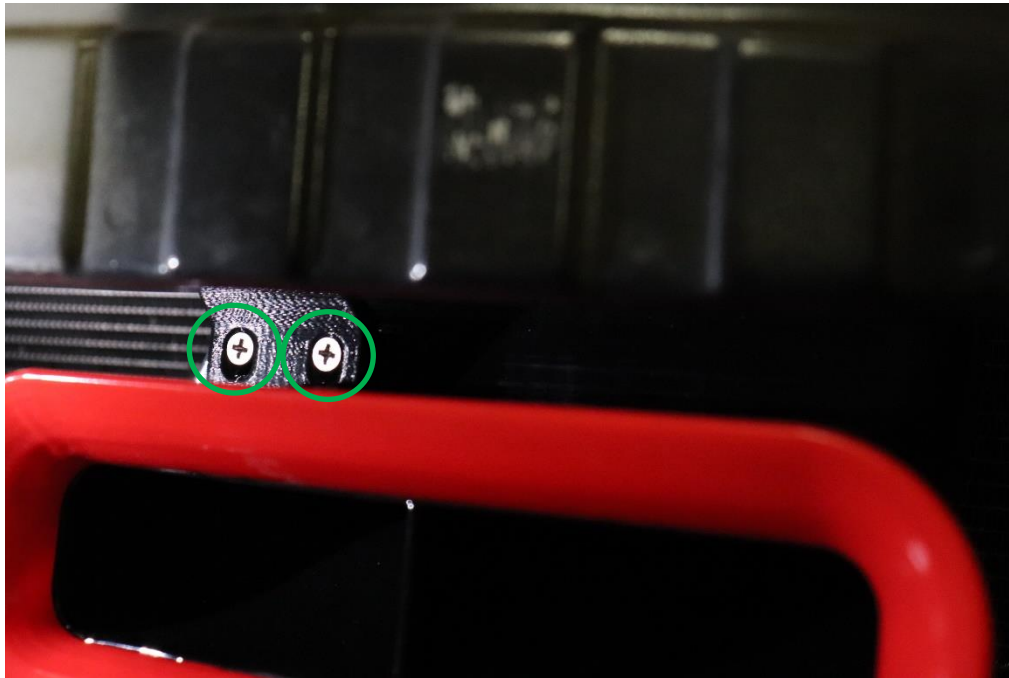
Clip Bracket 3

All brackets should be in place. You will need to go under the crash bar and insert the supplied Christmas-tree clip to fasten bracket 3 to the crash bar (there is a hole in the crash bar).



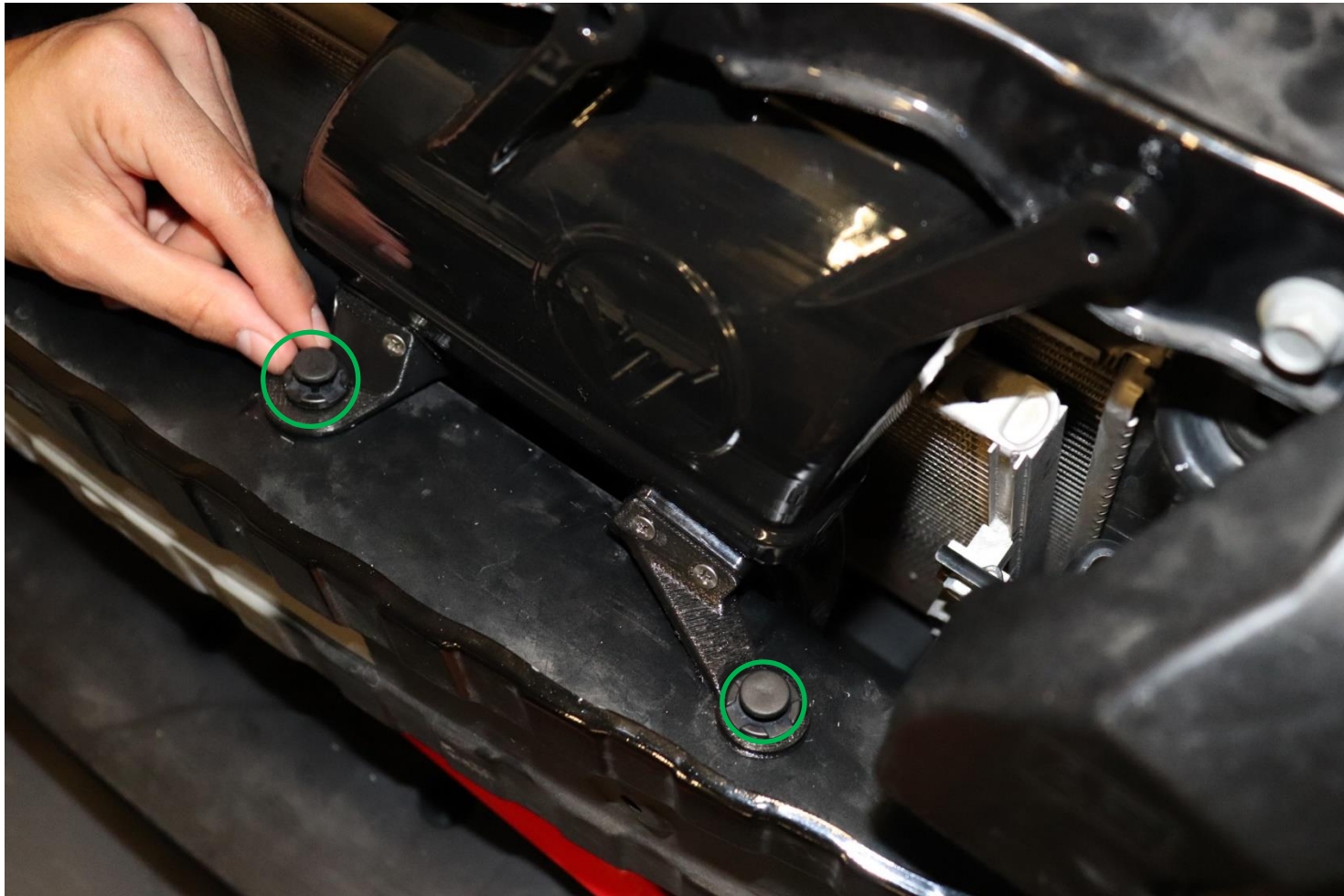
Tighten Bracket 3

Once Bracket 3 has been clipped into the crash bar, you may tighten these screws with a Phillips screwdriver. The slots in the bracket allow there to be adjustment.



Clip Brackets 1 and 2

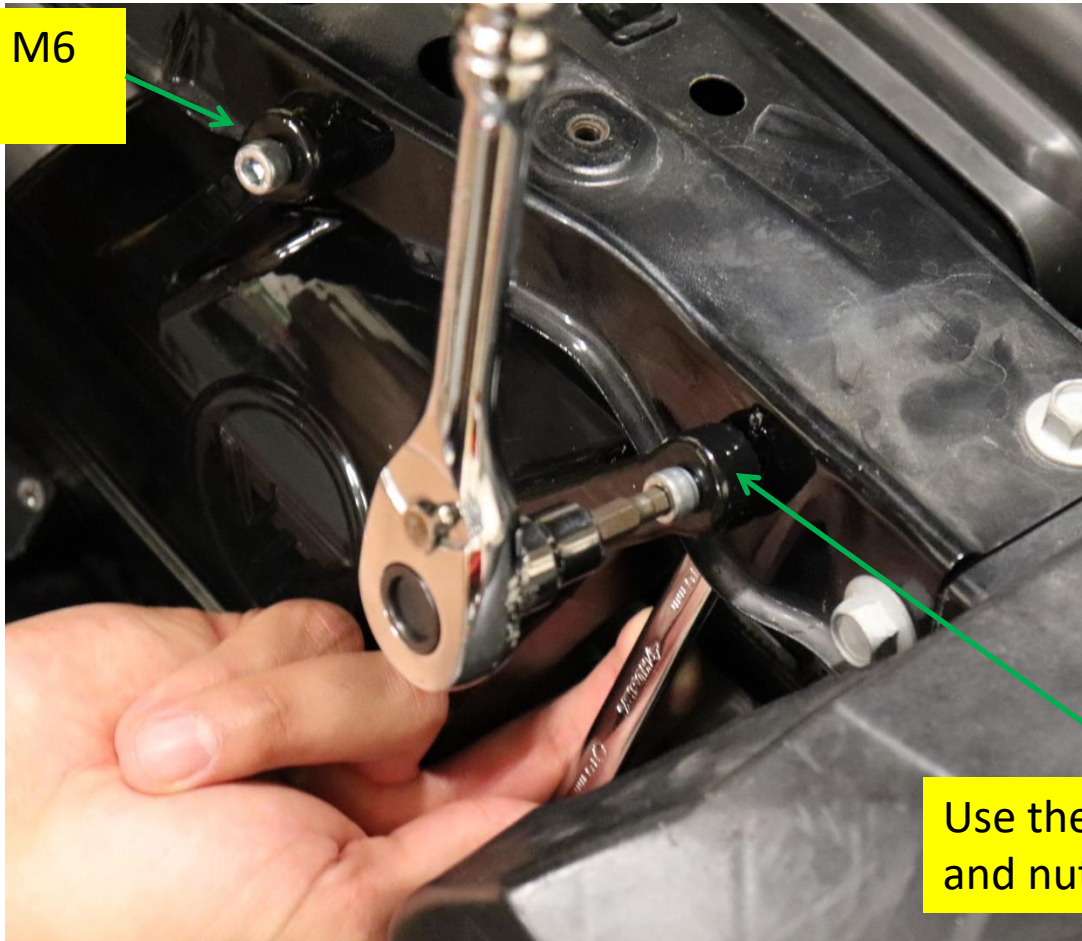
Insert the OEM clips as shown. These clips will securely snap brackets 1 and 2 into the crash bar.



Fasten Upper Section

Once the lower body is secure, you may fasten the upper body as shown.

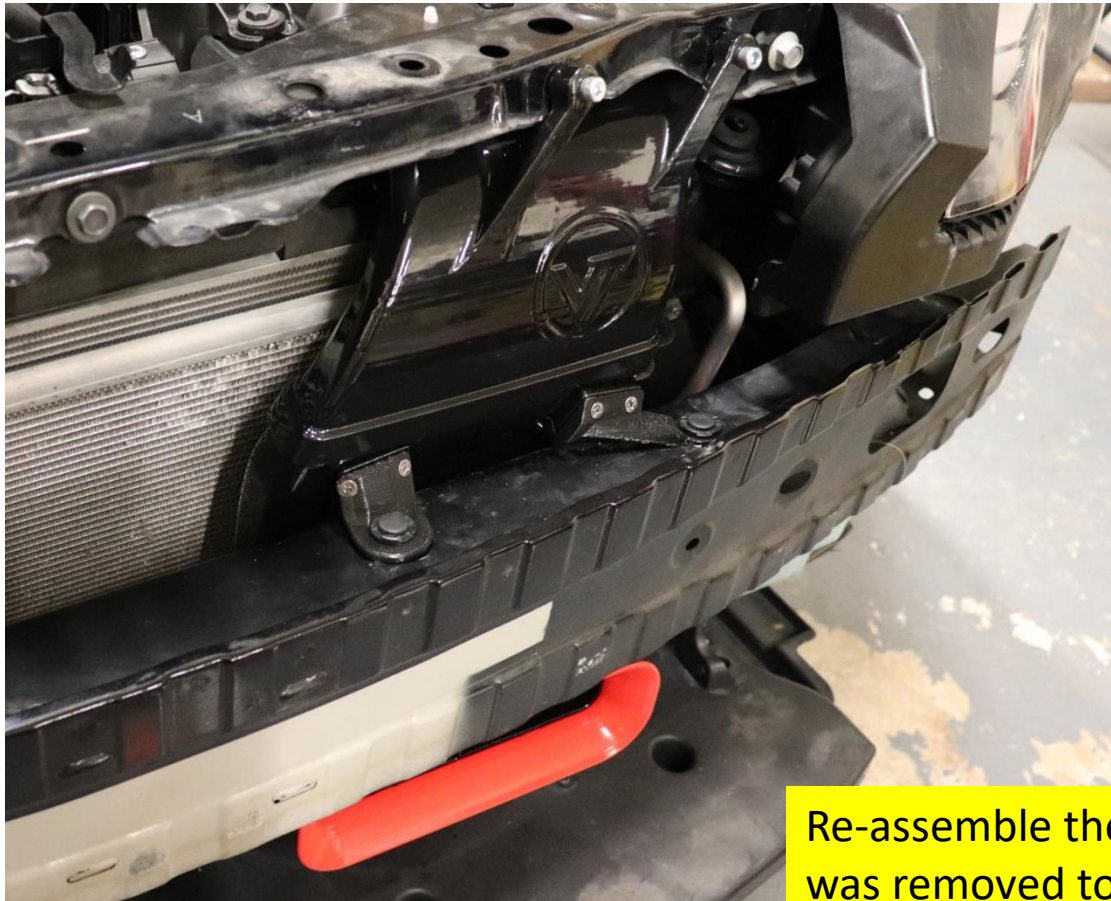
Use the supplied M6 bolt on this side.



Use the supplied M6 bolt and nut on this side.

Final Assembly Review

Review the install and make sure nothing is binding or causing any preload on any parts, loosen and retighten if adjustment is necessary.



Re-assemble the bumper the same way it was removed to complete installation.