



**2015-2021 Subaru WRX/STI BIG
MOUTH Ram Air Installation Guide**



Kit Contents (Full Kit)

Please review this document before attempting installation.

You will need basic hand tools and 2 hours of installation time.

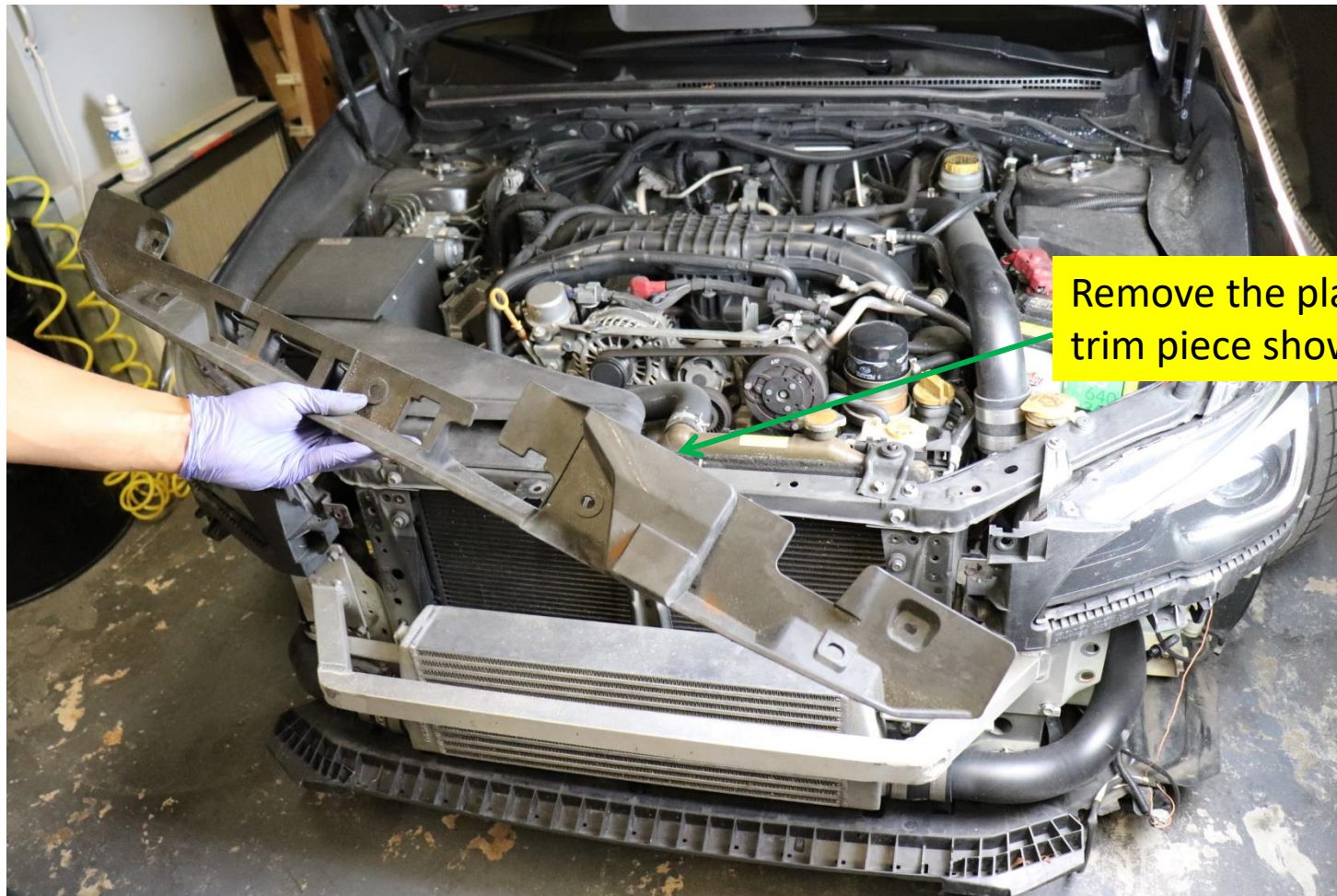
Kit Contents	Qty
M6 x 12mm Cap Screw	1
M6 Washer	3
M6 x 20mm Cap Screw	1
M6 x 3mm Spacer	1
M6 Split Ring Lock Washer	1
M6 Lock Nut	1





Stock Components Removal

It is best to google “how to remove bumper” for your particular trim, after the bumper is removed, you will see the following.



Remove the plastic trim piece shown.

Stock Components Removal

Remove front cross member.

There are 7 screws on each side of this cross member, remove them



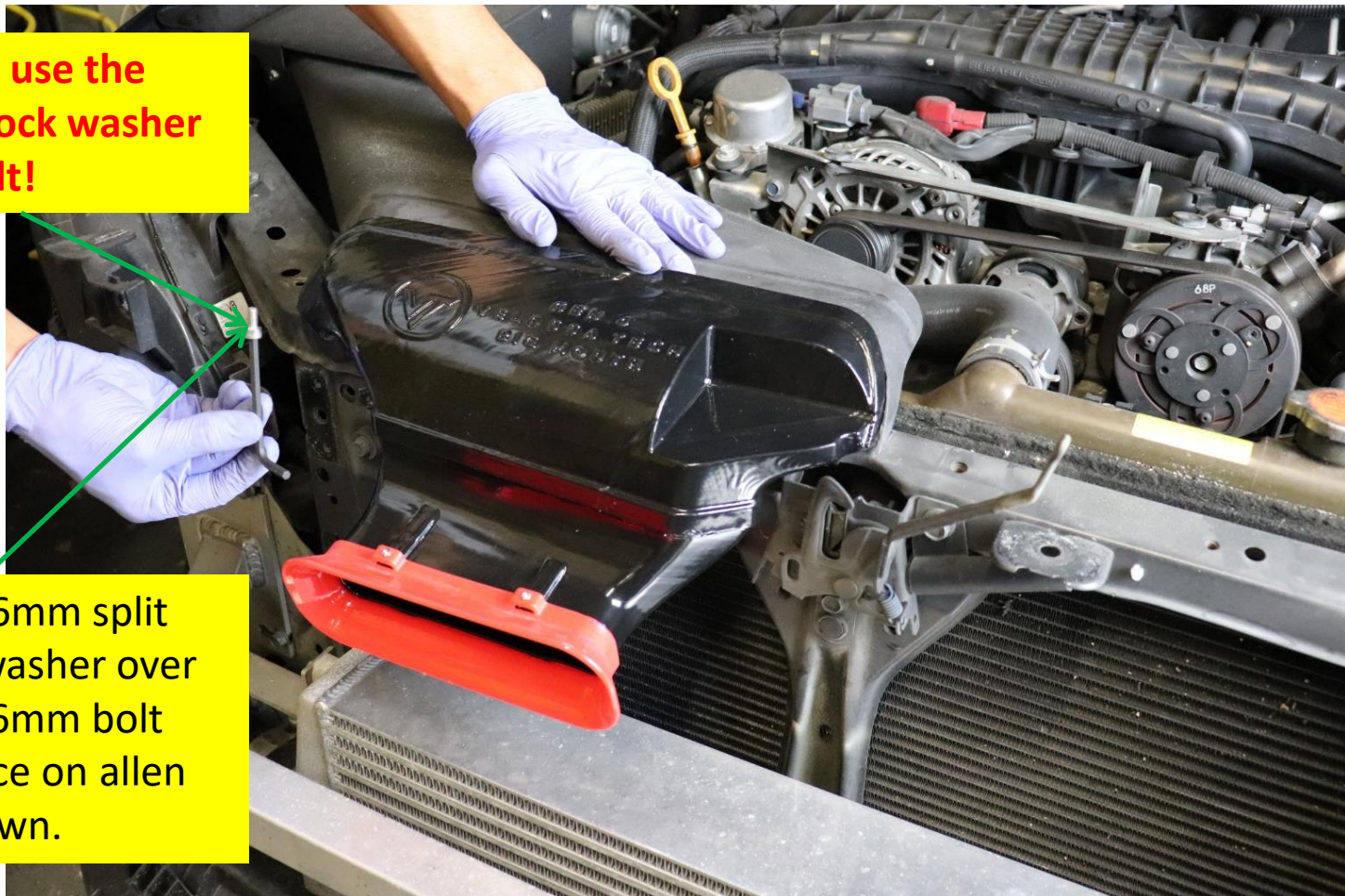
Big Mouth Installation

The BIG MOUTH slides into position as shown, make sure that it is seated properly over the OEM tab with one hole that is present underneath.

You MUST use the split ring lock washer on this bolt!



Place the 6mm split ring lock washer over the short 6mm bolt and balance on allen key as shown.



Big Mouth Installation

Be patient with this next step, ensure the bolt, OEM hole and BIG MOUTH fastening point are all lined up, feel for thread engagement and slowly begin to thread the bolt into the BIG MOUTH.



Snug the bolt well, but do not over-torque.

Patience is key, reverse rotation of the bolt until you hear it click/step down from the first thread under the BIG MOUTH, then begin to tighten.

Big Mouth Installation

Install the M6x20mm bolt with washer on the driver side fastening point as shown.

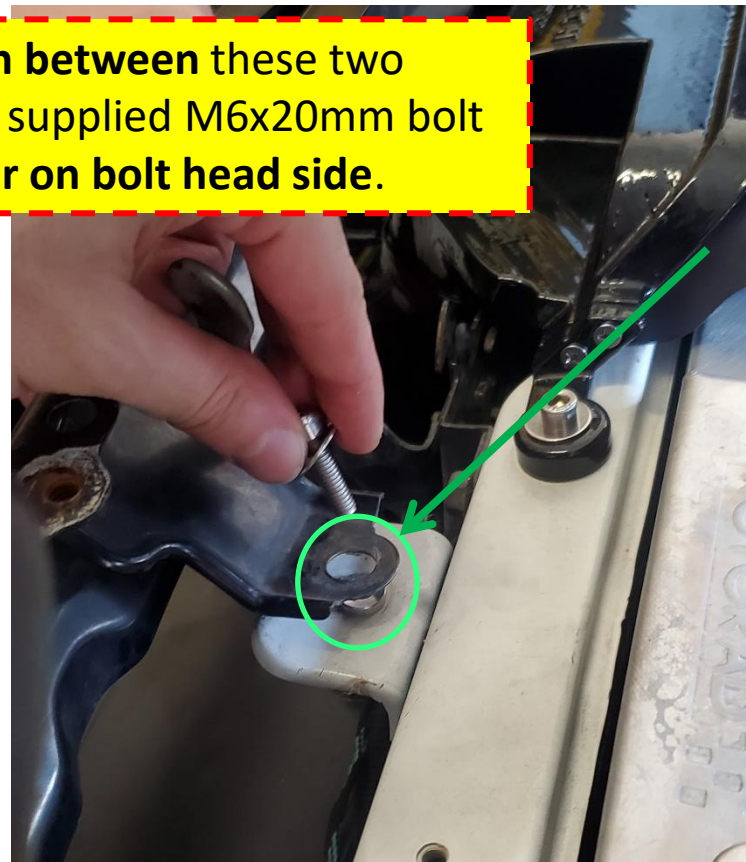
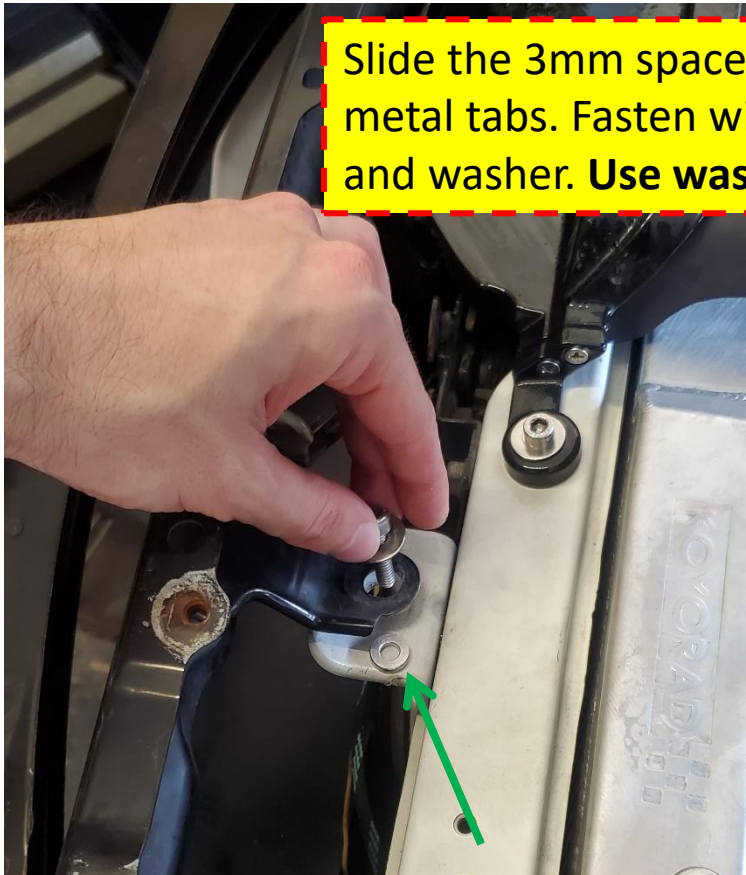


Push the supplied clip into this hold and fasten.

Big Mouth Installation

Once the BIG MOUTH is seated properly and screwed down, you may re-install the OEM cross member, ensure that the sides of the cross-member tuck behind the flaps behind the headlights before screwing together.

Slide the 3mm spacer in **between** these two metal tabs. Fasten with supplied M6x20mm bolt and washer. **Use washer on bolt head side.**



Final Assembly Review

Review the install and make sure nothing is binding or causing any preload on any parts, ensure that screws are tight and that your hood can close properly.



Re-assemble the bumper the same way it was removed to complete installation.