



**2021-2023 Hyundai Sonata N-Line
BIG MOUTH Installation Guide**



Kit Contents (Full Kit)

Please review this document before attempting installation.

You will need basic hand tools and 2 hours of installation time.

Kit Contents	Qty
M5 x 22mm BHCP	2
M5 lock nut	2





Stock Components Removal

It is best to Google “how to remove bumper” for your particular trim.

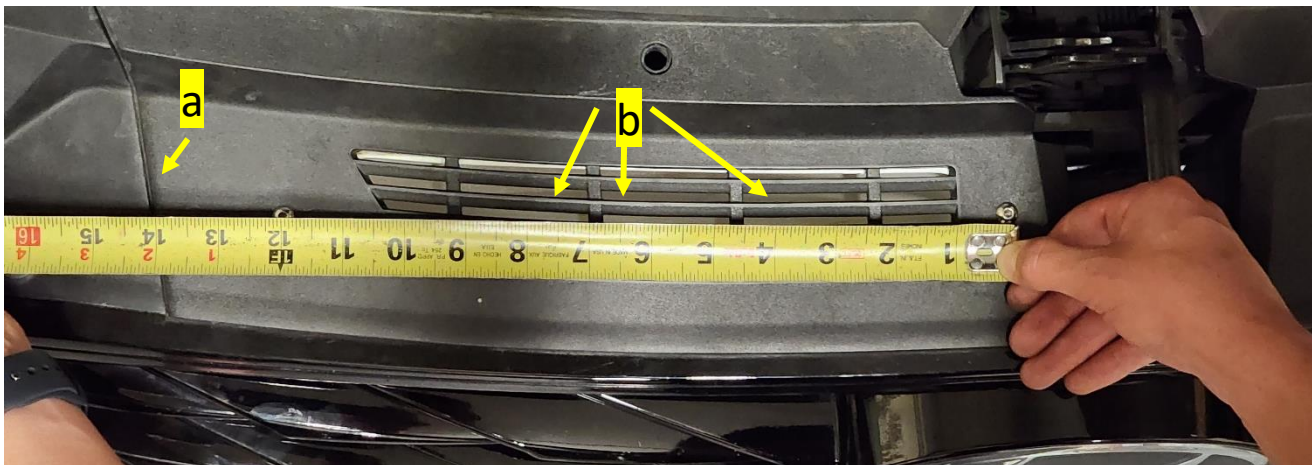
Driver Side Hole Location

The top shroud is integrated into the bumper and will come off as a single piece with the bumper. It is necessary to drill two $\frac{1}{4}$ " holes into this shroud to install the Big Mouth but it is recommended to start with a pilot hole before using the $\frac{1}{4}$ " drill bit.

Use the following references to locate the hole center. **Start with the driver side hole:**

- (a) straight edge on the shroud
- (b) the edges that divide the inlet
- (c) the tape measure
- (d) bolt holes on the Big Mouth. **This reference is particularly helpful for the driver side hole.**

Mark and drill the driver side hole. Confirm this hole location is correct before locating the passenger side hole. An enlarged version of this image is available on the next slide and additional images are provided for locating the passenger side hole.

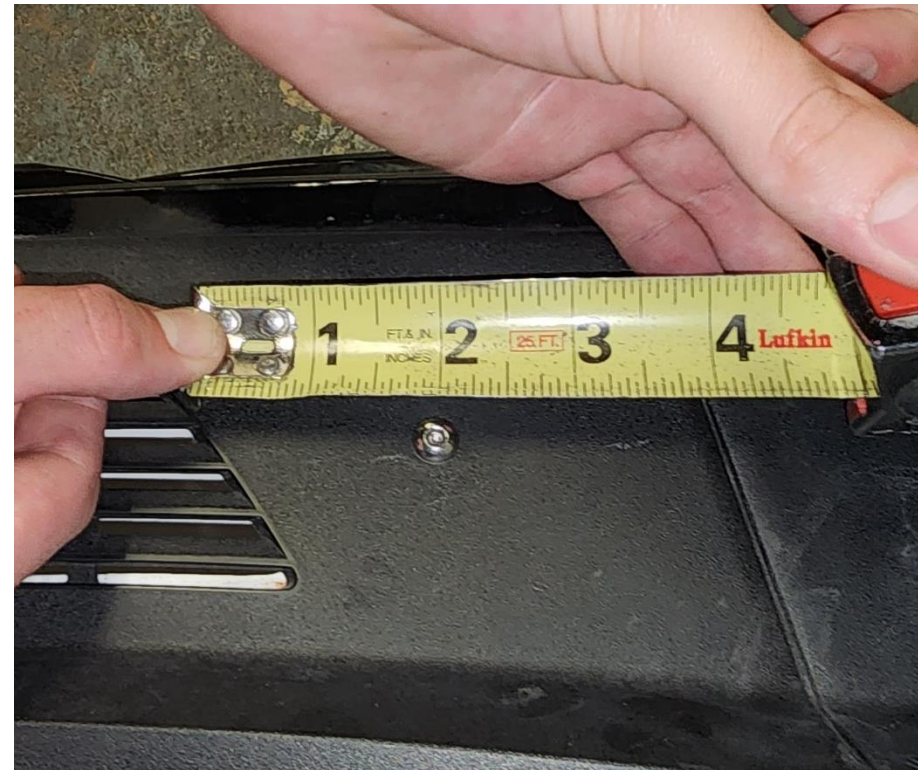




1 FT. IN. 2 INCHES 3 4 5 6 MADE IN USA 7 FABRIQUE AUX E.U.A. 8 HECHO EN E.U.A. 9 P.R. APR. 10 11 12 13 14 1 2 3 4 5 6 7 8 9 10 11 12 13 14

Passenger Side Hole Location

Use the same references from slide 4 along with these images to locate the hole center for the passenger side hole. Mark and drill the passenger side hole.



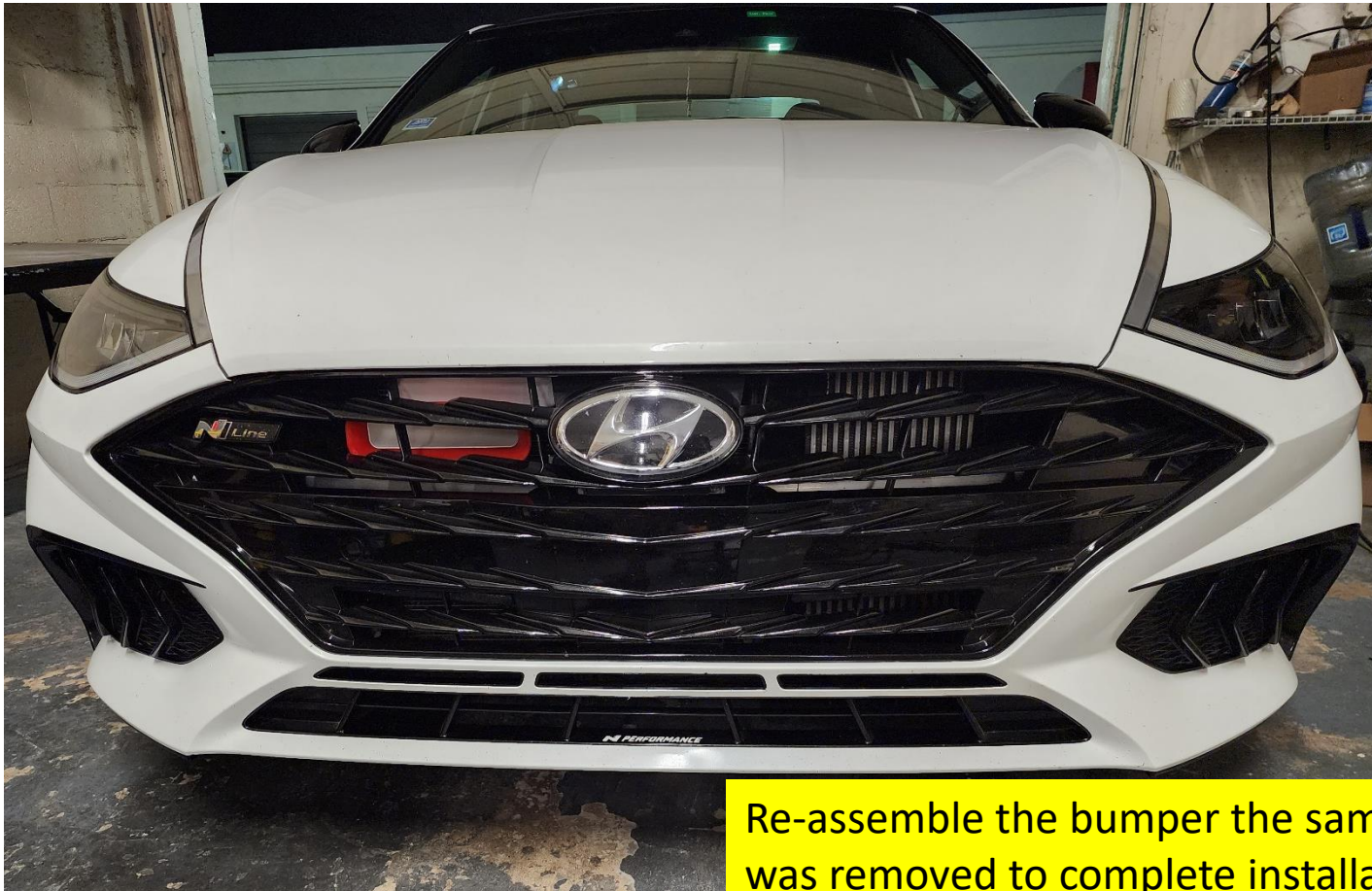
Big Mouth Installation

Once the holes are drilled, install the Big Mouth using the provided M5 x 22mm button head screws and the M5 lock nuts. **DO NOT OVERTORQUE.**



Final Assembly Review

Review the install and make sure nothing is binding or causing any preload on any parts, loosen and retighten if adjustment is necessary.



Re-assemble the bumper the same way it was removed to complete installation.