

2017-2020+ Infiniti Q50 Redsport BIG MOUTH Intake Installation Guide

Kit Contents

Please review this document before attempting installation.

You will need basic hand tools and about 1-1.5 hours of installation time.

Please review the table below and make sure you have received the kit contents.

Description	Qty in kit
	#
M6 x 30mm socket head cap screw	4
M6 x 40mm socket head cap screw	2
M6 large washers	10
M6 lock nuts	6
L-Bracket	1
M5 x 12mm socket head cap screw	1
M5 large washer	1
M5 lock washer	1
M5 lock nut	1
Foam Strip (1")	1
Pair of Orientation Blocks ("F" and "B")	1
VT Aluminum Bracket	1



Bumper Removal

Perform a YouTube Search using the term “How To Remove Your Infiniti Q60's Front Bumper Properly” and follow the steps for bumper removal (same steps for Q50).

Once you remove the bumper, please continue with this installation guide

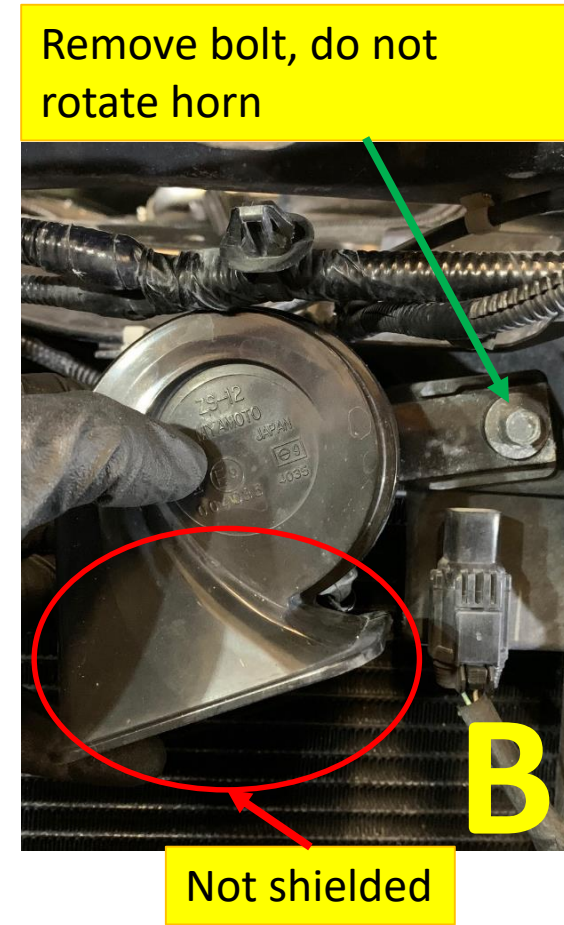
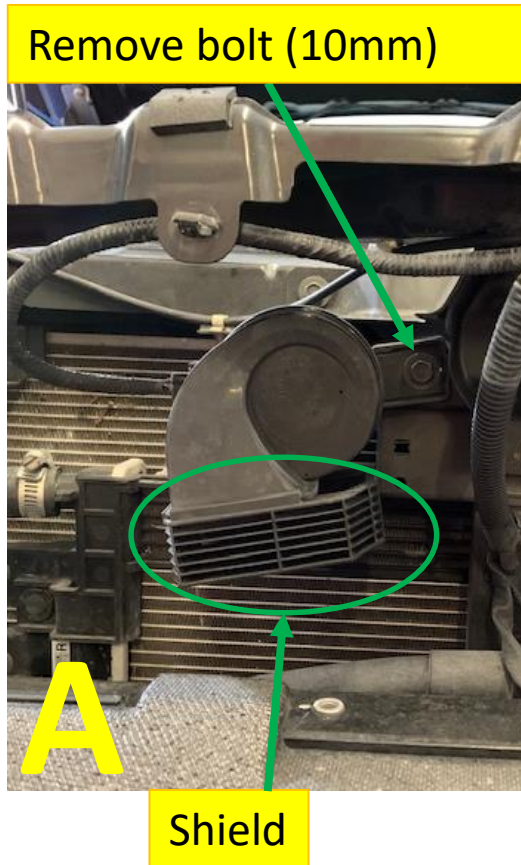
Retainer Clip Removal

Pinch the wire loom retainer clips as shown and remove the wire looms from the metal frame. Do this to both sides.



Horn Re-orientation

If your OEM horn looks like the one in (A), horn will need to be rotated. Remove bolt, loosen the central nut and rotate it 90° so the shield is pointing opposite the mounting bracket. If your OEM horn looks like the one in (B), simply remove the bolt.



Horn Re-orientation

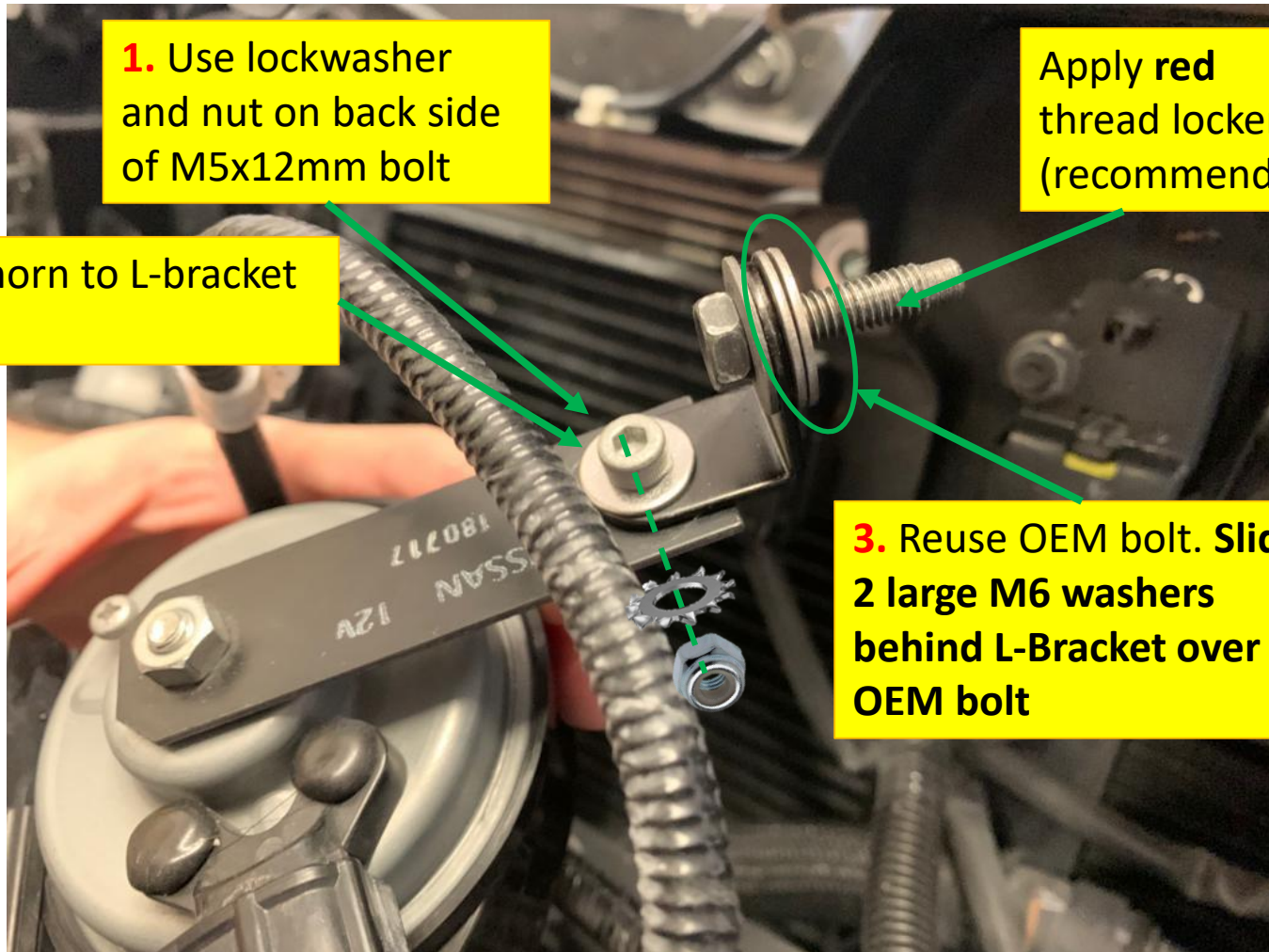
Use the supplied M5 hardware to fasten the L-Bracket as shown below. Tighten the lock nut to a torque spec of 50 in-lb. **Place 2 large M6 washers behind bracket** and reuse OEM bolt.

1. Use lockwasher and nut on back side of M5x12mm bolt

2. Secure horn to L-bracket (50 in-lb)

Apply red thread locker (recommended)

3. Reuse OEM bolt. Slide 2 large M6 washers behind L-Bracket over OEM bolt



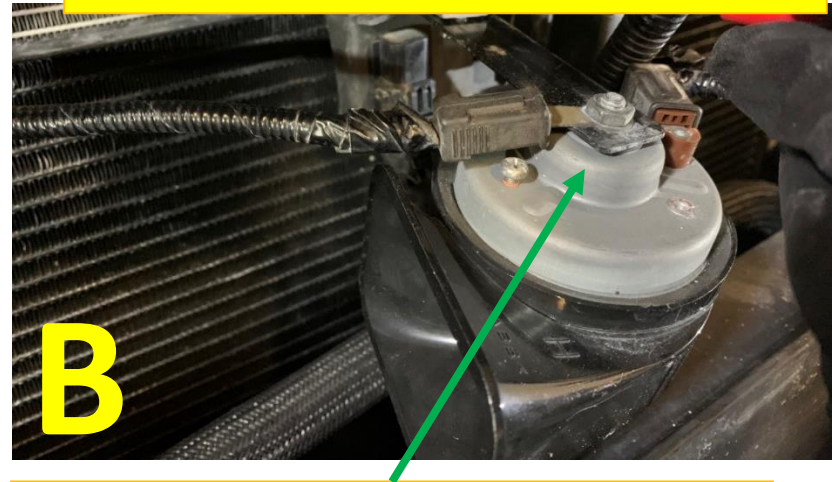
Horn Reorientation

Fasten the L-Bracket to the OEM horn mounting hole.

Tighten until snug + 1/8 turn



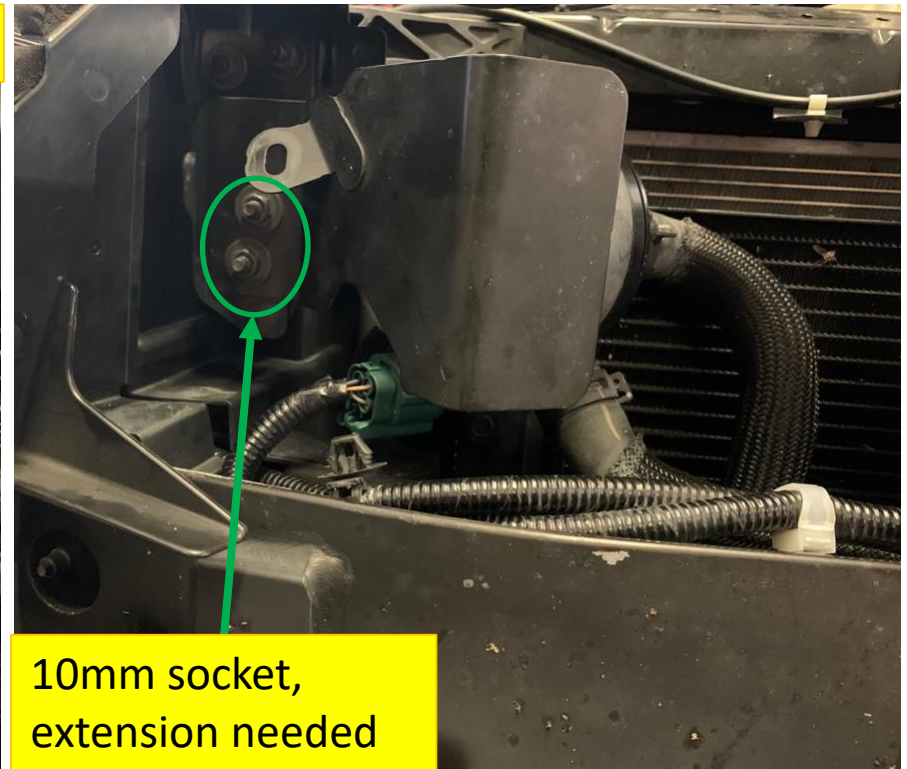
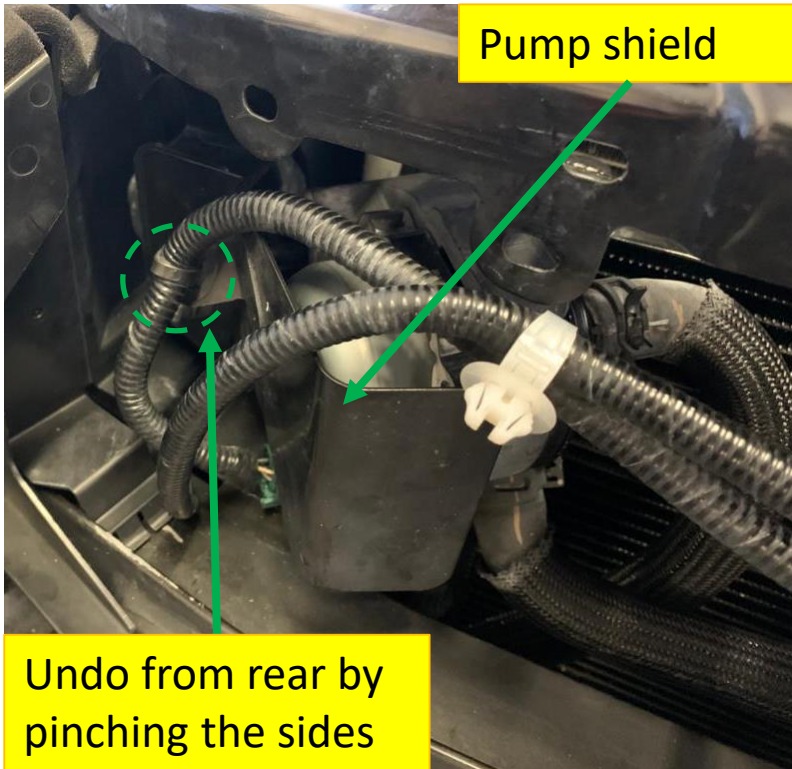
(B) type horn shown below, with ground wire in correct orientation.



Make sure wire loom is not under tension or wrapped around horn, loosen the nut if necessary and rotate the ground wire.

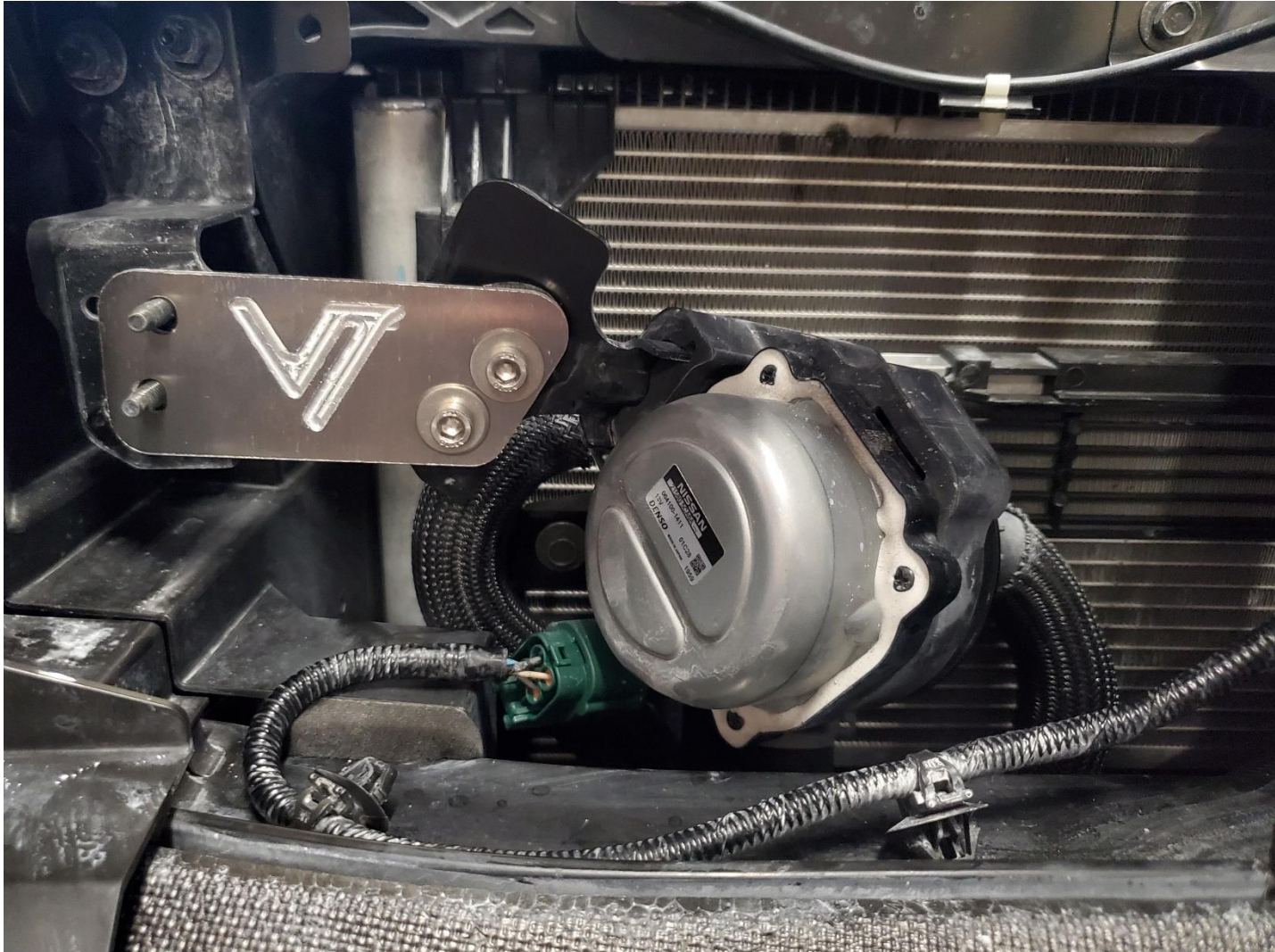
Pump Reorientation

Undo clip that retains the wire loom for the pump shield. Then remove the nuts that retain the shield. The shield will **not** be reused.



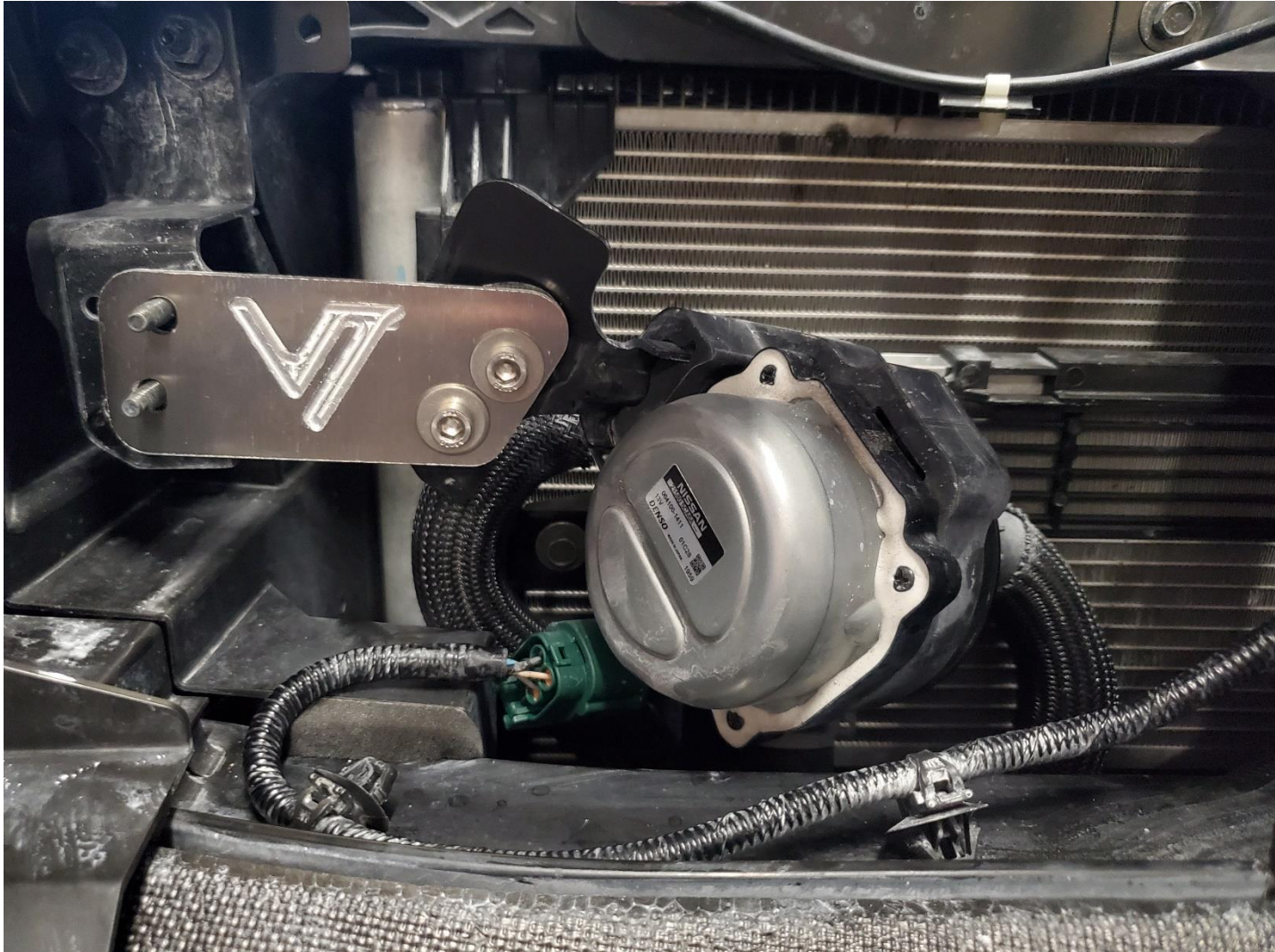
Pump Reorientation

Shown below is the water pump after being reoriented, the following slides will outline the process.



Pump Reorientation

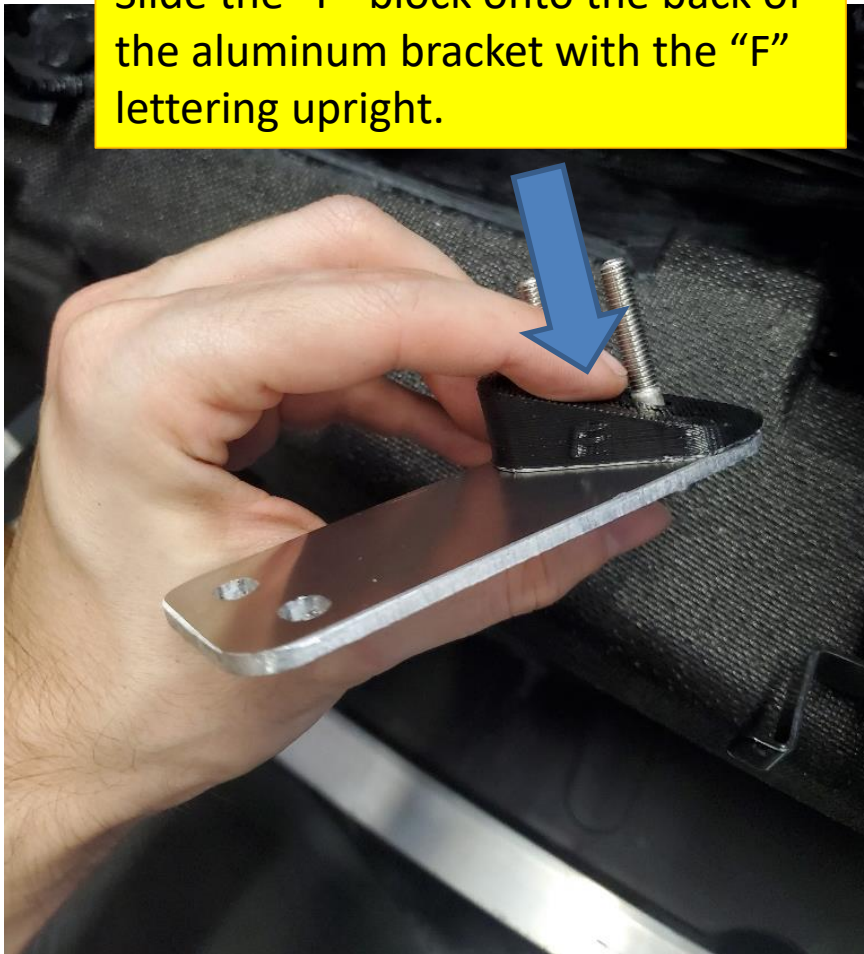
Shown below is the water pump after being reoriented, the following slides will outline the process.



Pump Reorientation – “F” Block

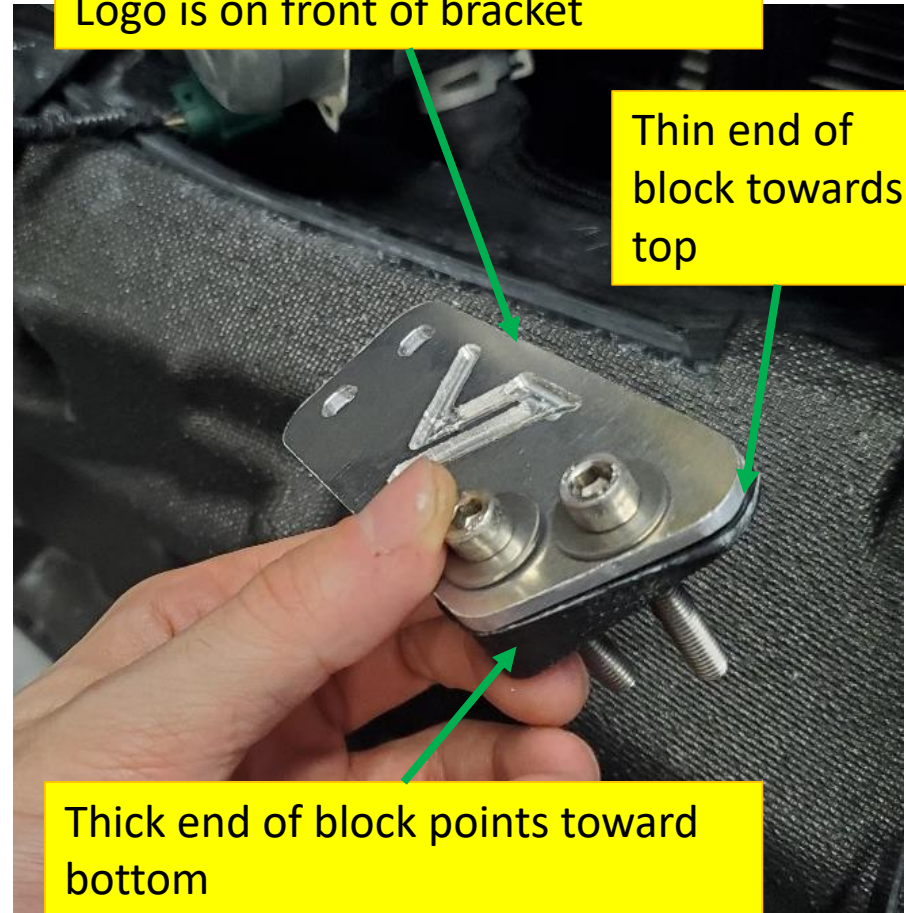
The first step is to group the aluminum bracket with the “F” (Front) block as shown below. Use the supplied M6x40 screws and 2 large washers to keep the assembly in place, do not fasten yet. Pay careful attention to the block position.

Slide the “F” block onto the back of the aluminum bracket with the “F” lettering upright.



Logo is on front of bracket

Thin end of block towards top

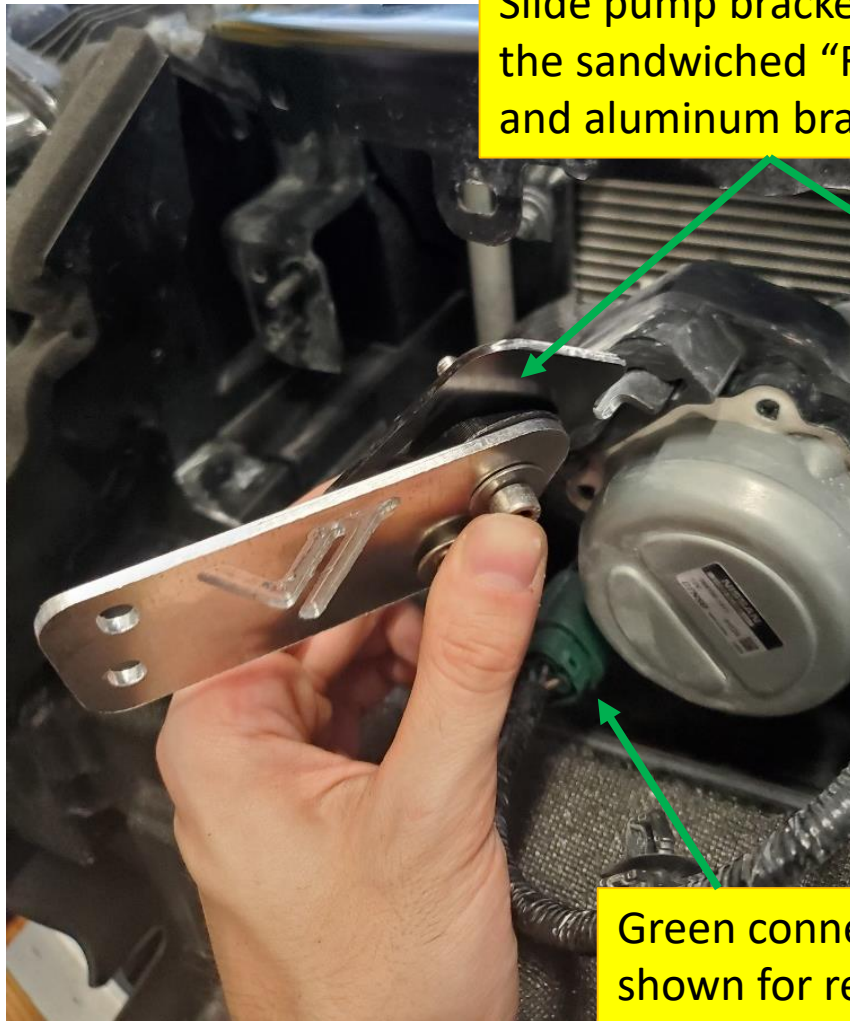


Thick end of block points toward bottom

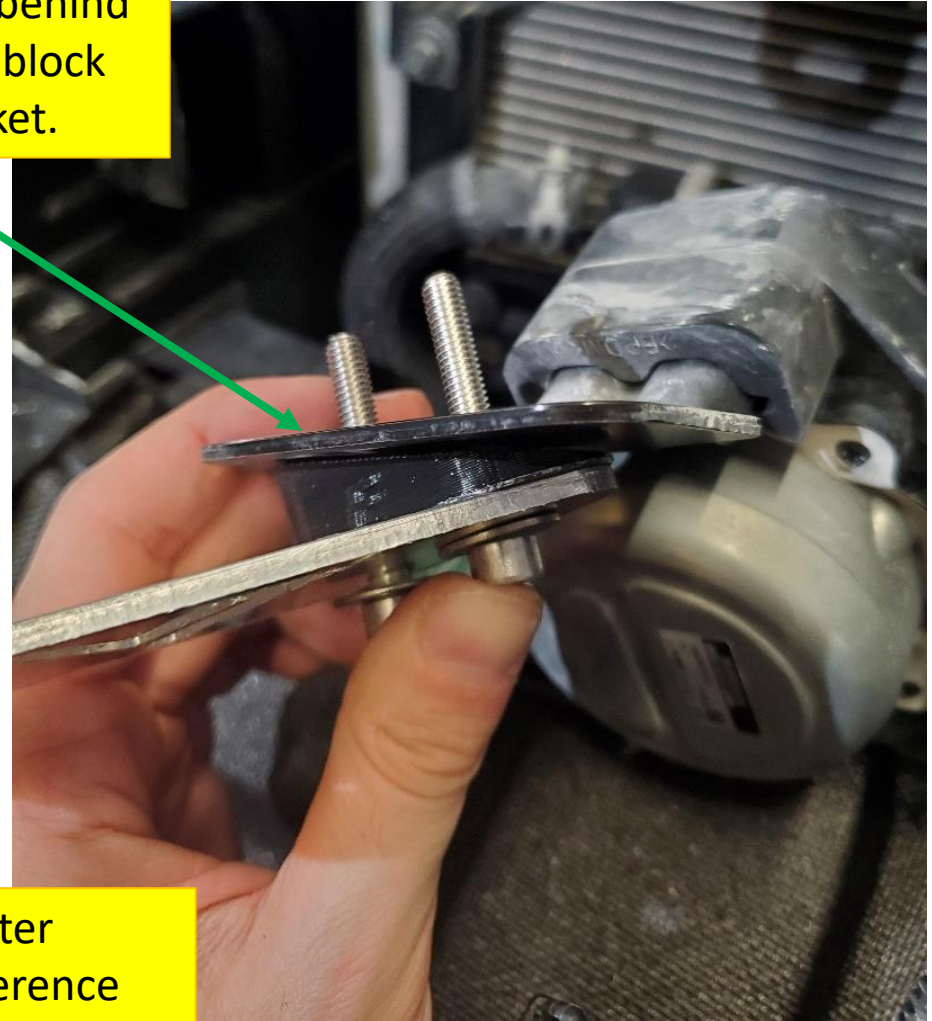
Pump Reorientation – Sandwich

The next step is to position the pump mounting bracket behind the “F” block. Do not fasten yet. The pump will naturally want to tilt when following this step.

Slide pump bracket behind the sandwiched “F” block and aluminum bracket.



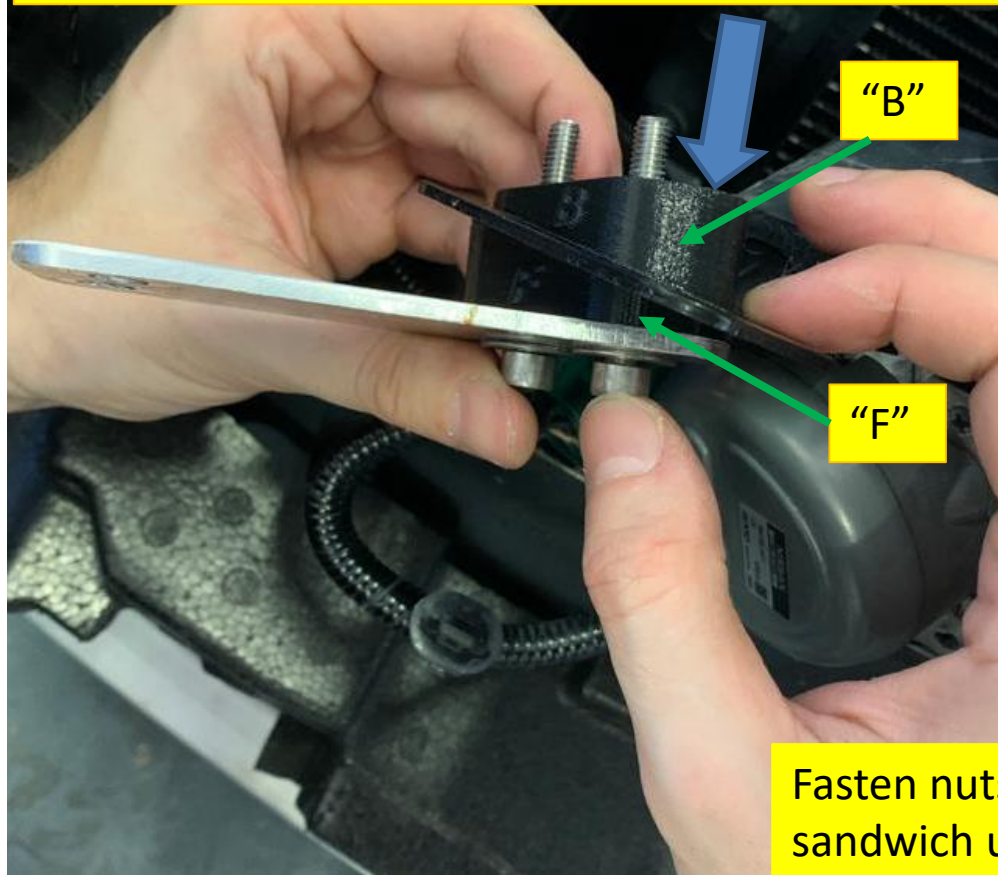
Green connector shown for reference



Pump Reorientation – “B” Block

Lastly, slide the “B” (Back) block onto the assembly and fasten using a large M6 washer and M6 lock nut on each screw.

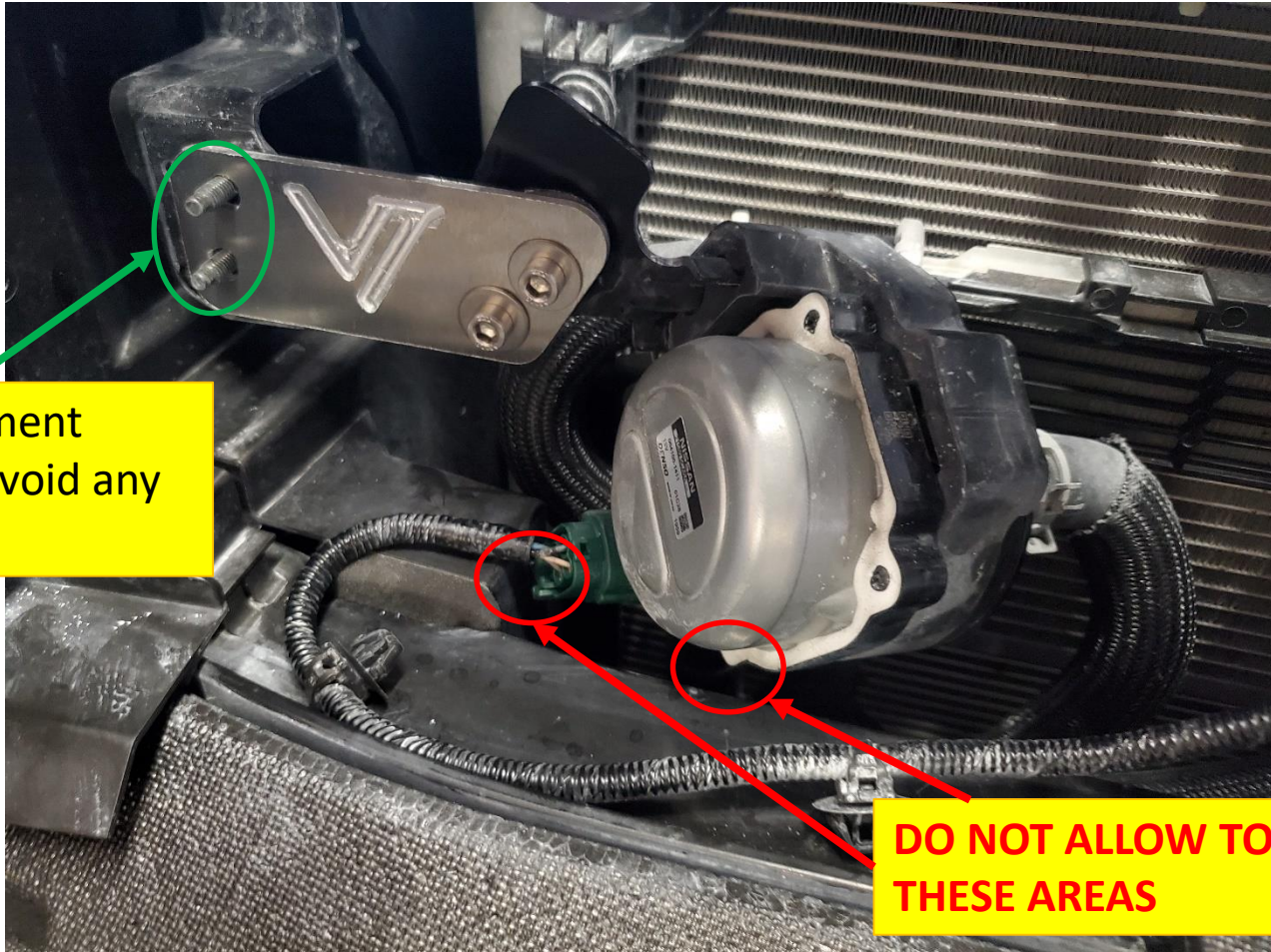
“B” block slides over the back of the pump bracket to complete the sandwich. “F” and “B” blocks cause the pump to tilt forward, but; their outer faces should be parallel. You should be able to read the letters from a top view when the sandwich is complete.



Fasten nuts with large washers on the back of the sandwich using a 10mm wrench and 5mm hex key.

Pump Reorientation

If you followed the steps in the previous slides, the pump will not touch the crash bar. It will have a natural forward tilt. The aluminum bracket holes are slightly oversized to allow for small adjustment; use as needed.

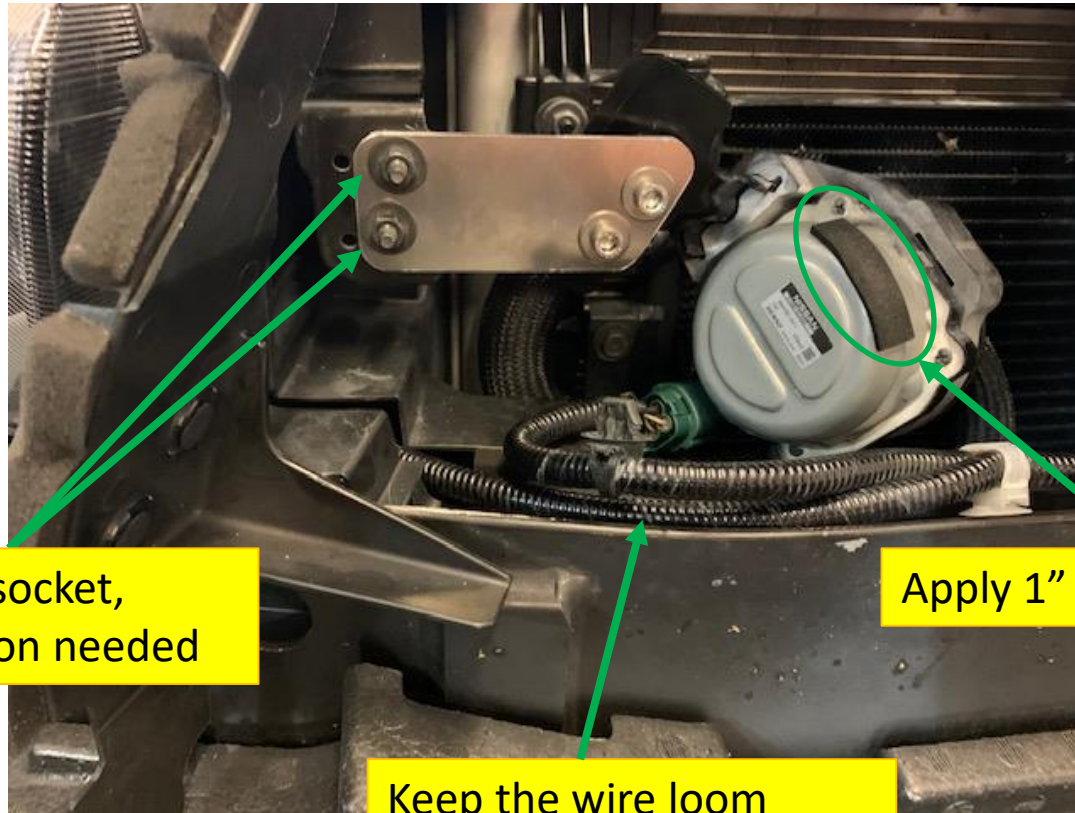


Slight adjustment available to avoid any touching.

DO NOT ALLOW TOUCHING IN THESE AREAS

Pump Reorientation

Once the correct position for the pump has been chosen, fasten the pump assembly to the car using the OEM nuts. Apply the supplied foam strip onto the pump on the area indicated below.



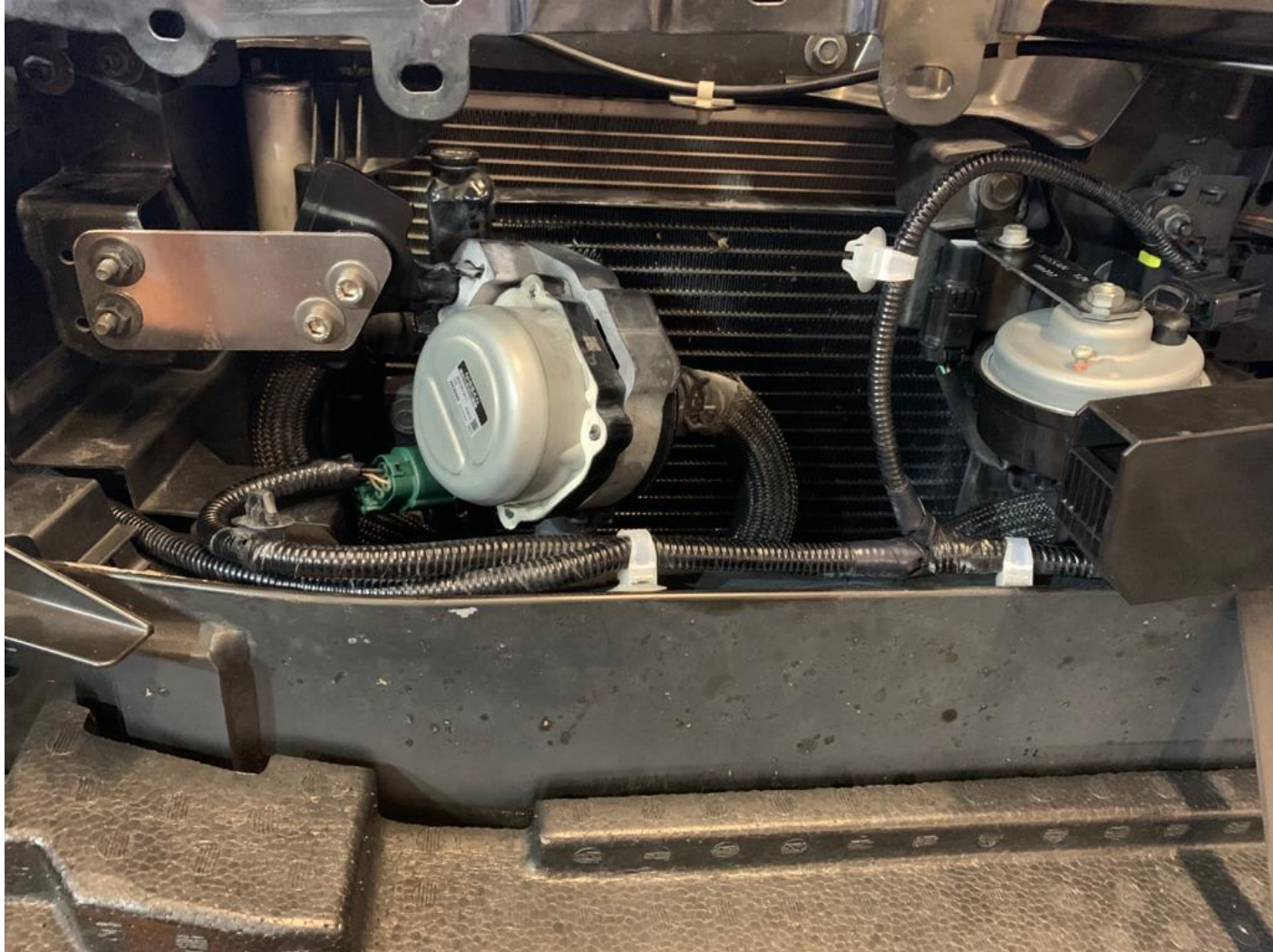
10mm socket,
extension needed

Apply 1" foam strip here

Keep the wire loom
routed along the crash
bar

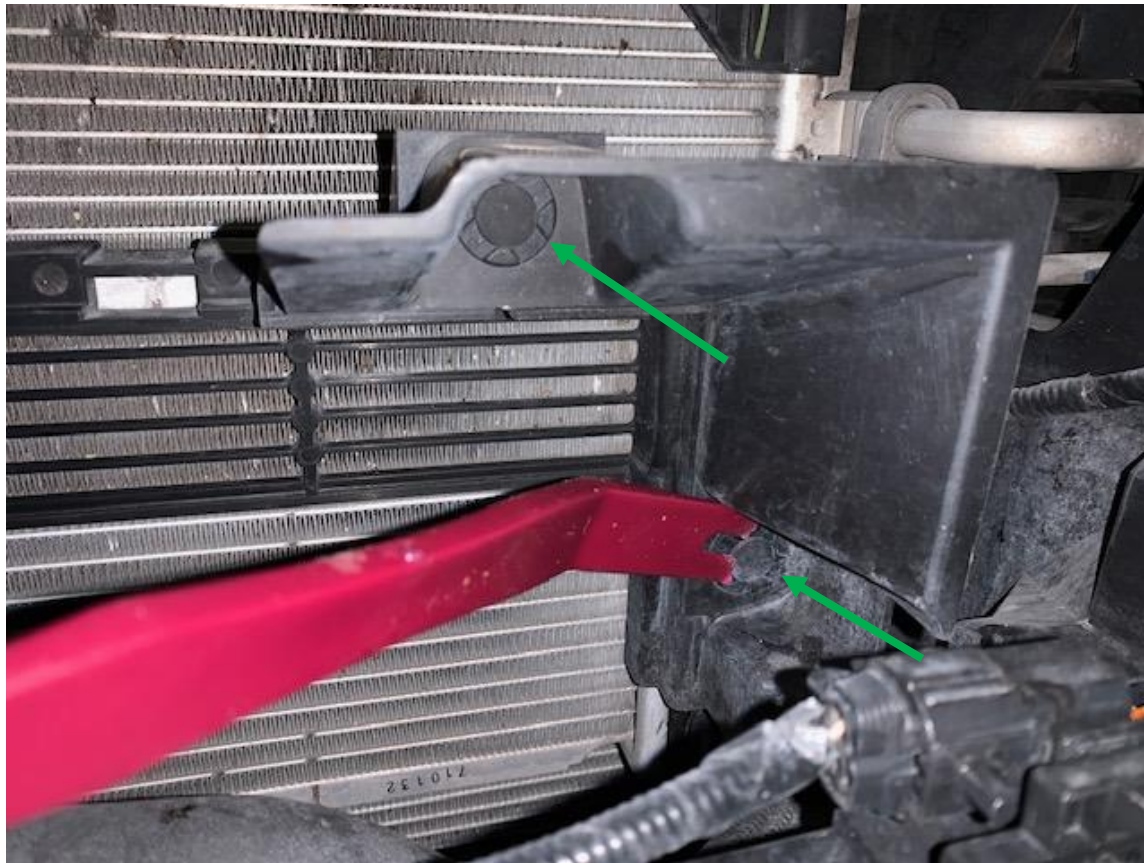
Pump Reorientation Overview

After the pump has been reoriented, it should have a slight forward tilt and plenty of clearance.



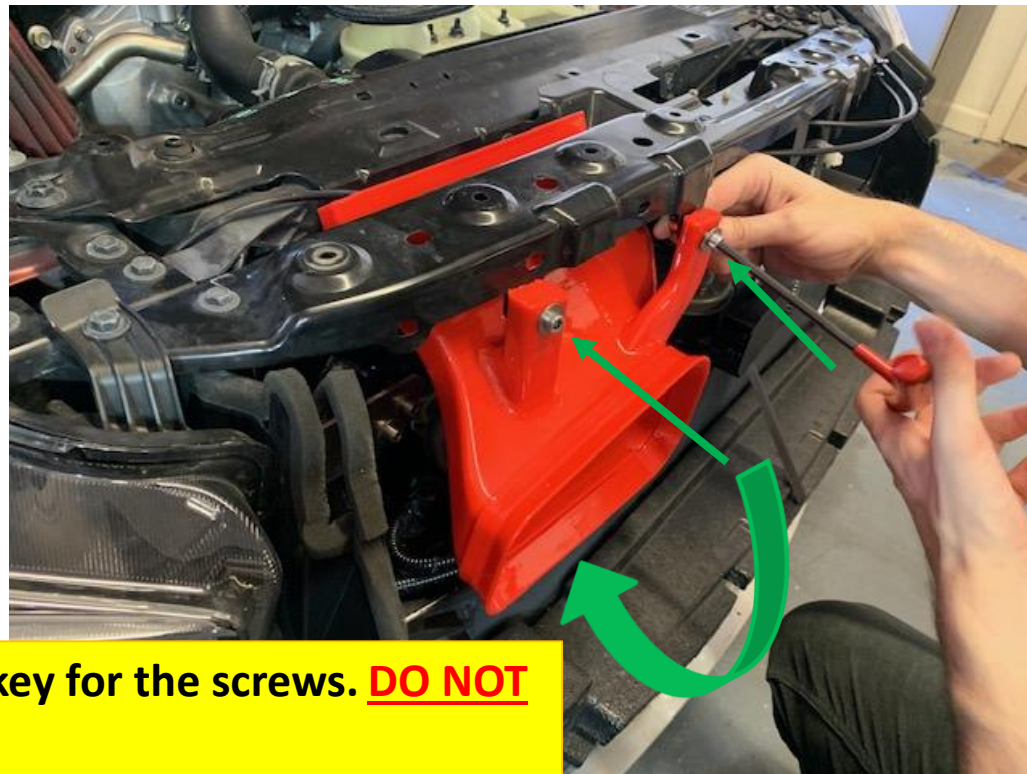
Big Mouth Installation

If your stock heat exchanger has this small shroud located on the driver side, remove it by extracting the indicated pop clips.



Big Mouth Installation

Insert the Big Mouth in an upward sweeping motion as indicated. Align the holes and use the supplied M6 x 30mm bolts + 6mm large washers (front) and M6 locknuts (rear) to fasten. Turn by hand at first in order to avoid cross threading, use a 5mm hex key and 10mm wrench for tightening. Install both Big Mouth intakes this way.



Use a 5mm hex key for the screws. **DO NOT OVERTIGHTEN.**

Finalize

Re-install the bumper the same way it was removed and ENJOY!

