



# **Hyundai I30 N BIG MOUTH Intake Installation Guide**



## Kit Contents

Please review this document before attempting installation.

You will need basic hand tools and 1 hour or less of installation time.

Please review the table below and make sure you have received the kit contents.

Description	Qty in kit
M6 x 25mm socket head cap screw	2
6mm washers	2



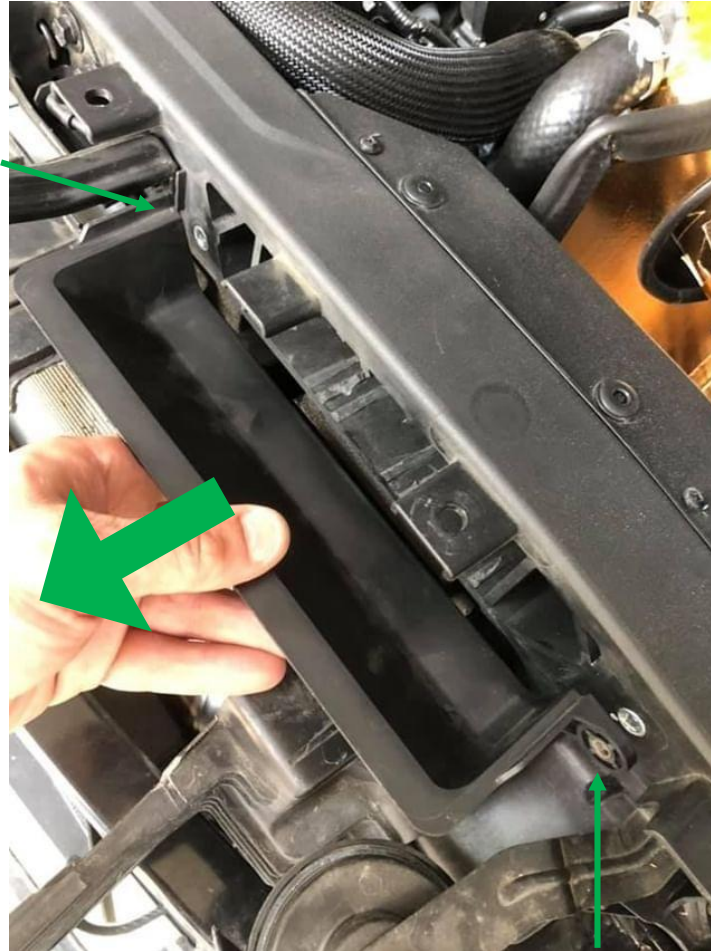


# Stock Components Removal

**REMOVE BUMPER PRIOR TO ATTEMPTING INSTALLATION!!!**

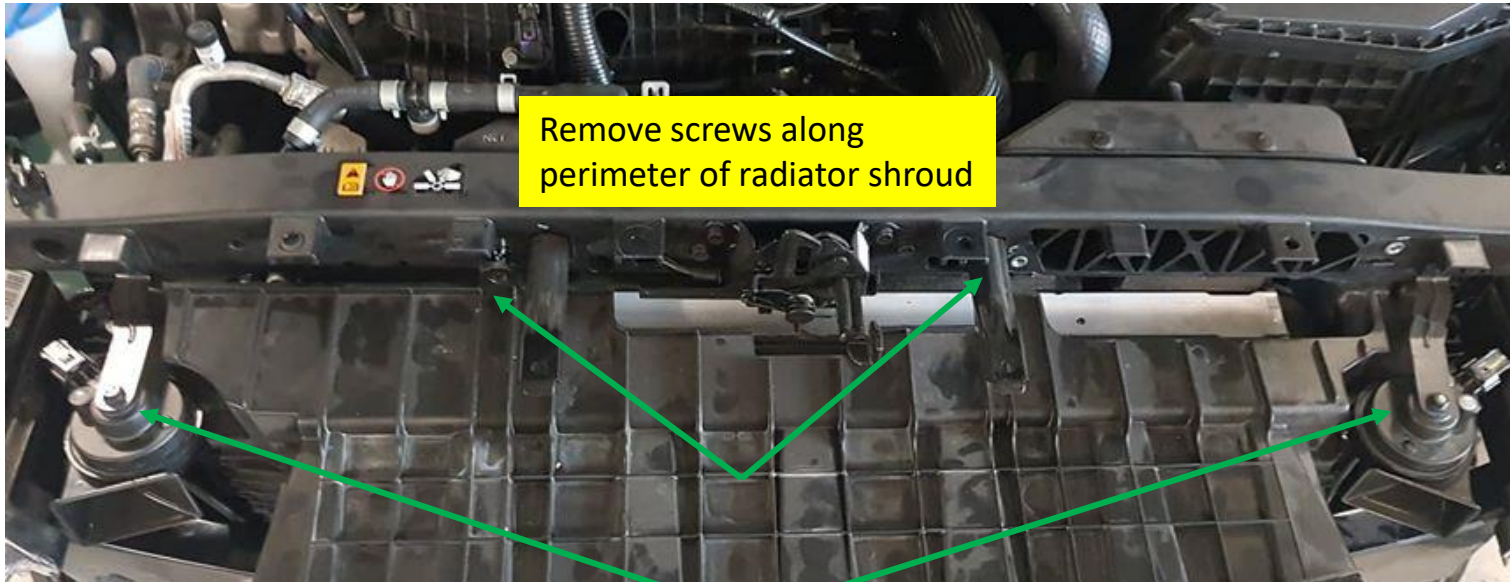
# Stock Components Removal

Once the bumper is removed, remove the air shield shown below and put aside, **DO NOT RE-USE STOCK HARDWARE.**



# Stock Components Removal

Once the bumper is removed, you will need to remove the following OEM components shown below.



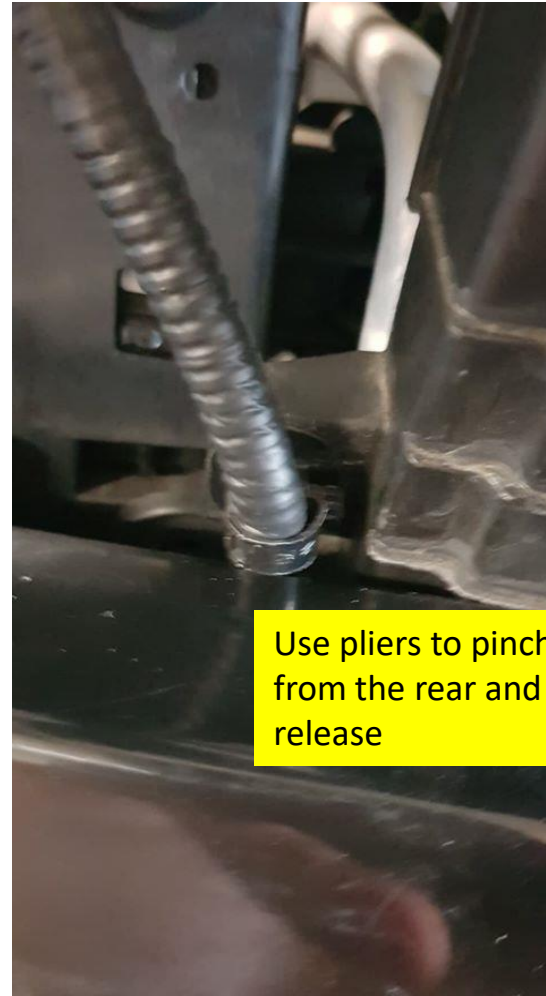
Remove screws along perimeter of radiator shroud

Remove horns in order to make room for radiator shroud removal

There are more screws around the outer perimeter of the shroud (not all are displayed)

## Stock Components Removal

Remove the clips that retain the wire loom to the radiator shroud. Proceed to remove the radiator shroud.



Use pliers to pinch the clip from the rear and pull for release

# Big Mouth Installation

Slide the big mouth over the opening and attach using the supplied hardware. **Do not cross thread the screws!!!**

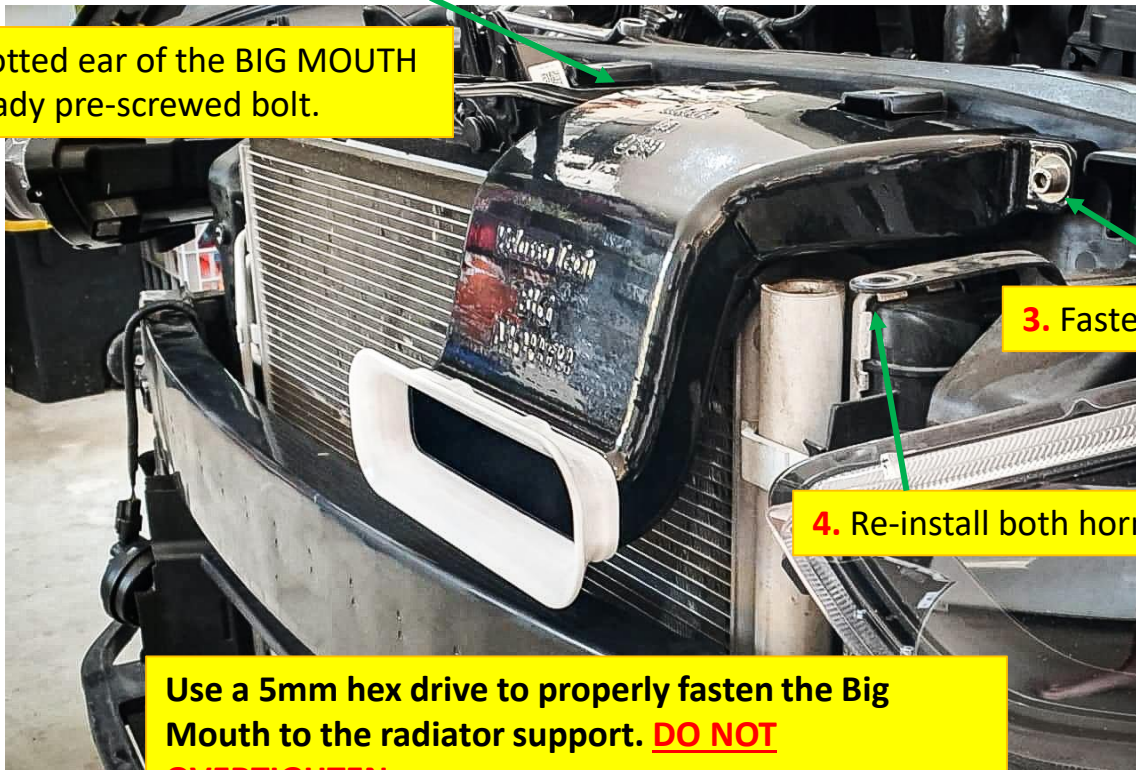
**1.** Start threading one bolt into the stock 6mm threads located here.

**2.** Slide the slotted ear of the BIG MOUTH on to the already pre-screwed bolt.

**3.** Fasten this bolt last.

**4.** Re-install both horns.

Use a 5mm hex drive to properly fasten the Big Mouth to the radiator support. **DO NOT OVERTIGHTEN.**



## Finalize

Re-install the horns and the bumper the same way they were removed and ENJOY!

