



**Genesis G70 3.3T/2.0T
BIG MOUTH Ram Air Intake
Installation Guide**



Please review this document before attempting installation.

You will need basic hand tools and 1-1.5 hours of installation time.

This product reuses the OEM hardware.

Description	Qty in kit
	#
AGS Simulator Housing	1
Link	1
Back plate	1
#6, 1/2" long flat head screws	4
16" long zip ties	2

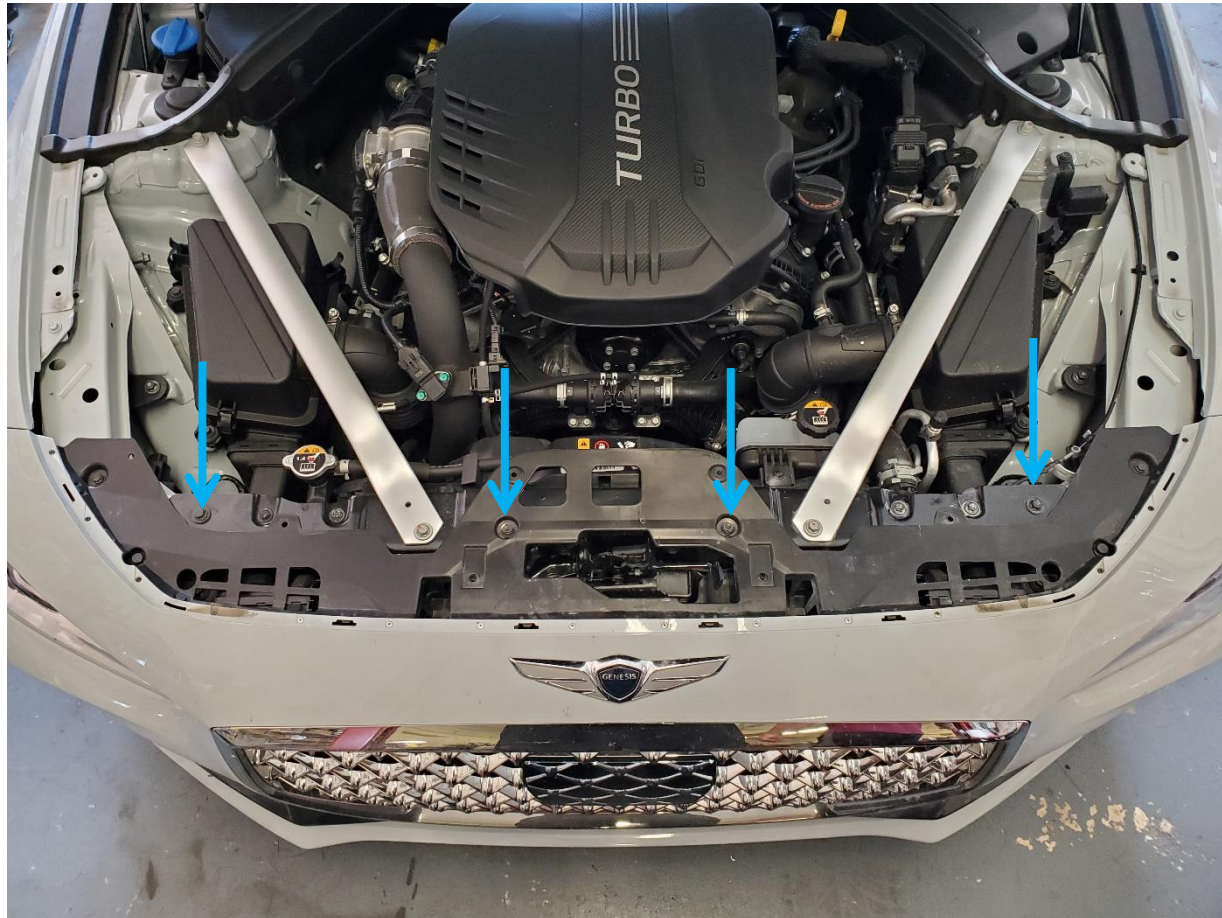
Bumper Removal

Remove the shroud by pushing down on the center pin of the pop-up clips and extracting them with a pry tool.



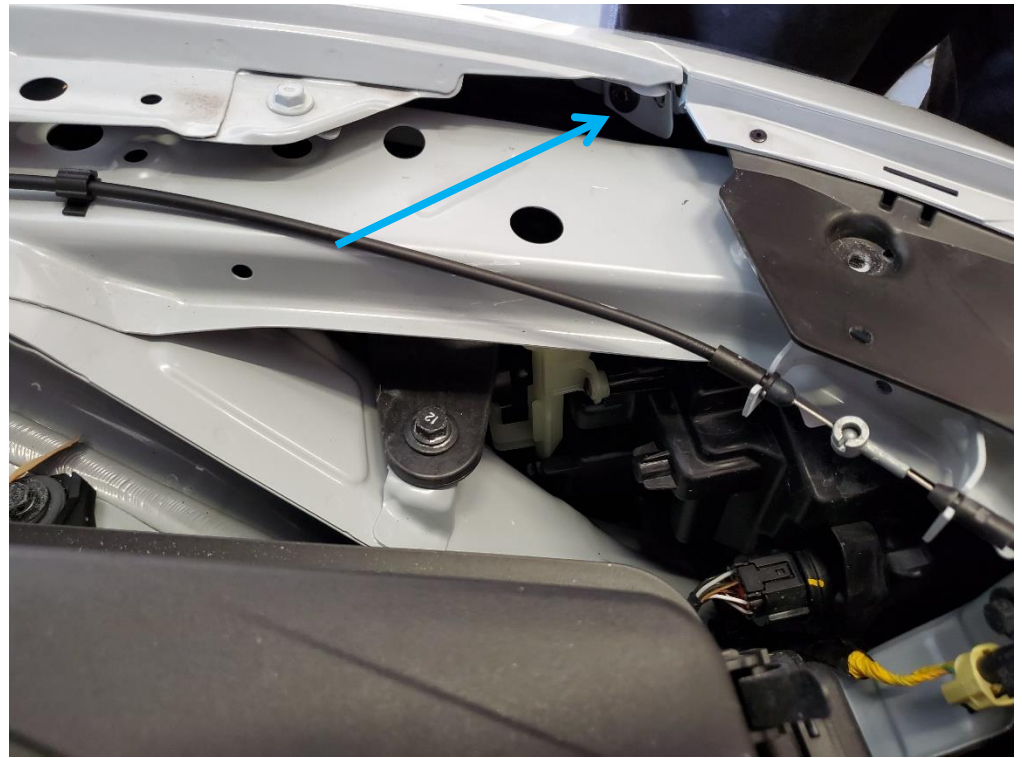
Bumper Removal

After removing the shroud, remove the top 4 screws (10mm) that attach the bumper to the chassis



Bumper Removal

Remove the hidden screw (8mm) lying within the cavity identified below.



Bumper Removal

Remove the 3 pop-up clips and 1 screw (8mm) that lie in the wheel well



Bumper Removal

Remove all the pop-up clips (no screws) that trace the edge of the bumper such as the ones indicated below.



Bumper Removal

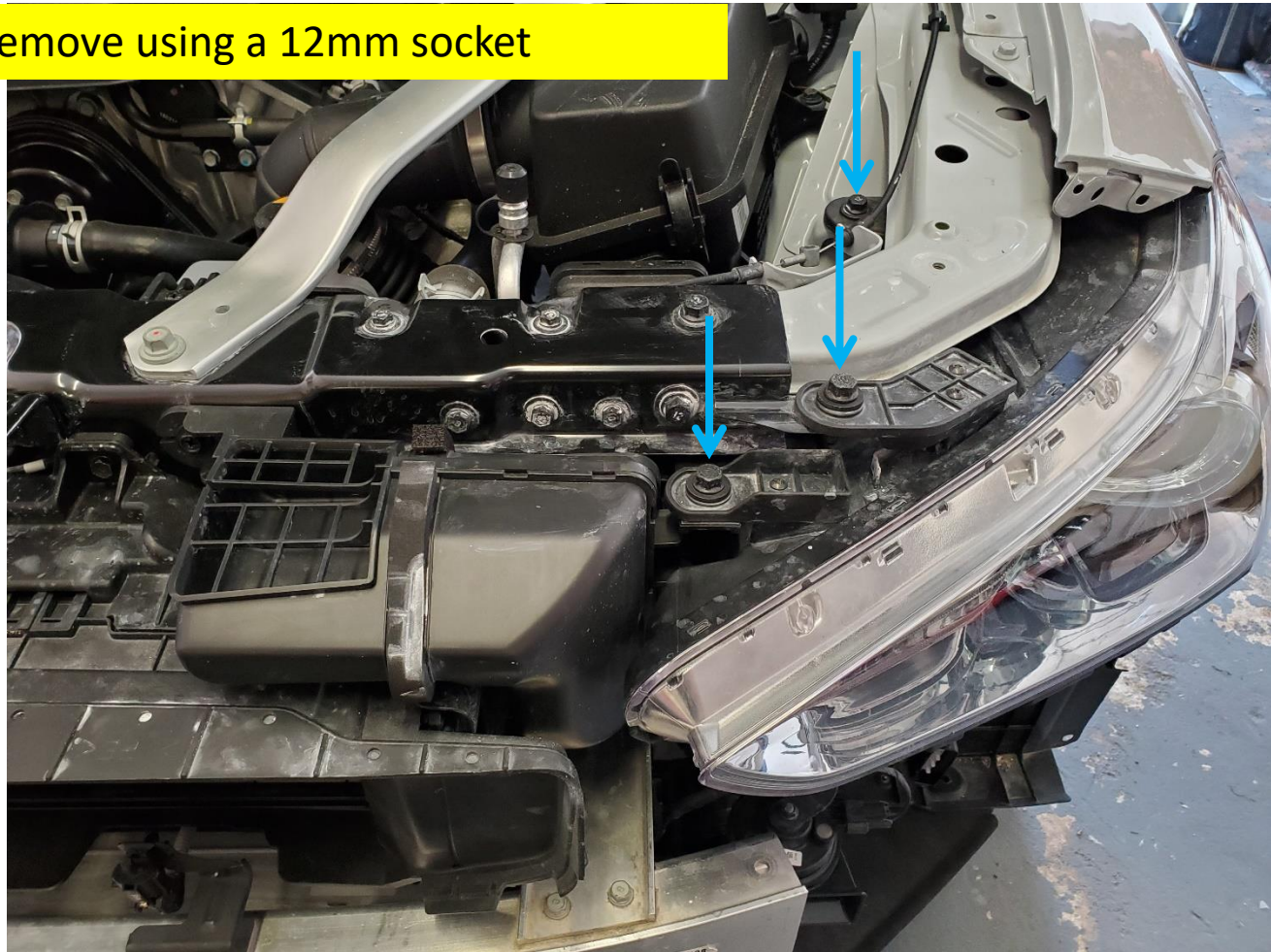
As the bumper gets pulled off, take notice of the indicated wiring harness connector. To remove, pull back on the lever shown below. Once it swivels about entirely, pull to disconnect.



Moving Headlight

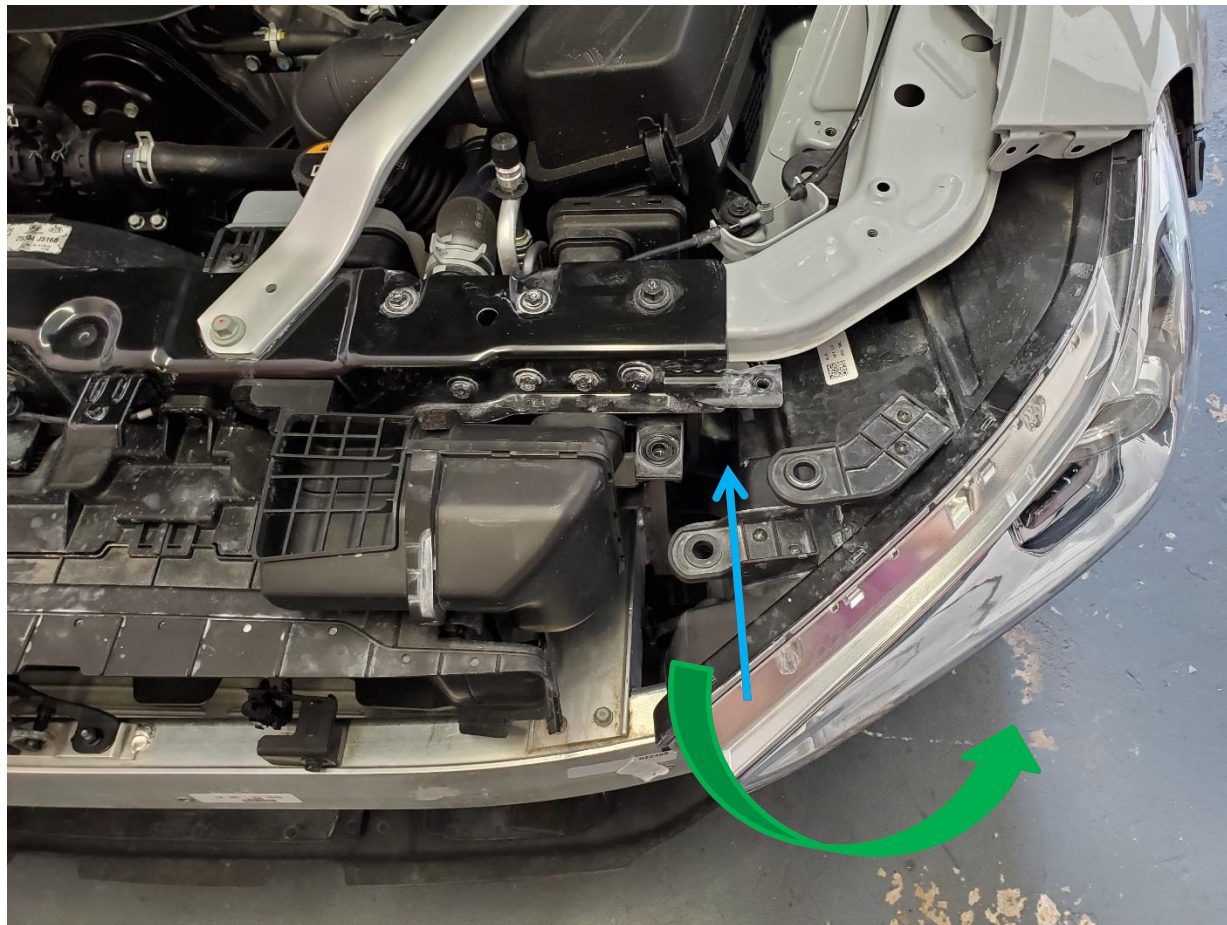
The bolts holding both headlights must be removed for this install but **do not fully remove the headlight from its socket.**

Remove using a 12mm socket



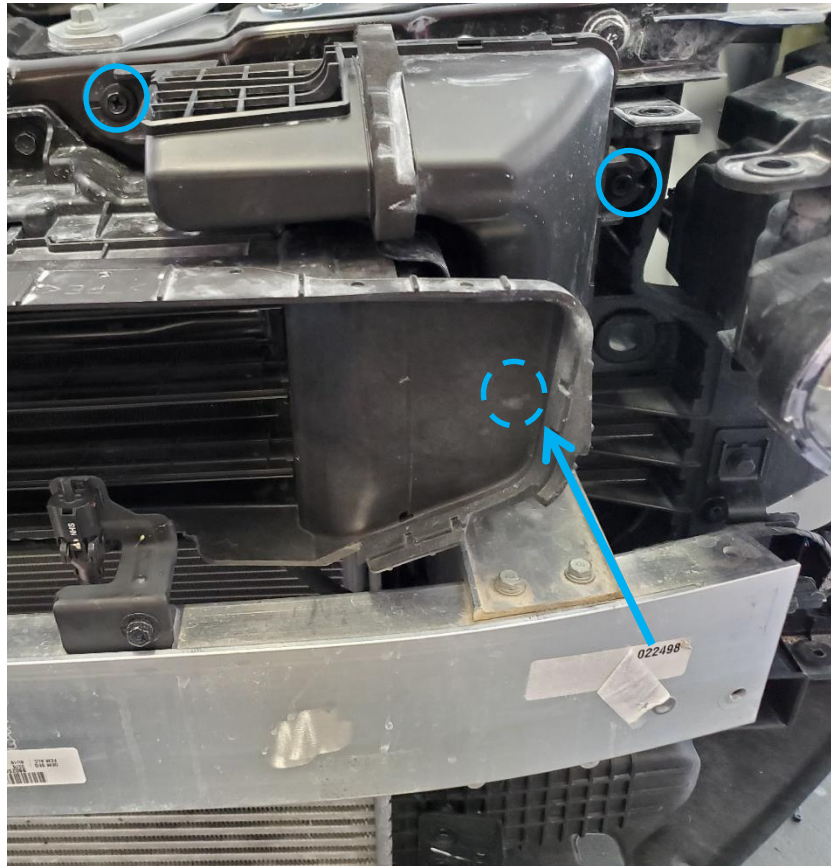
Moving Headlight

Swivel the headlights just enough to access the bolt hidden behind it.



Stock Snorkel Removal

To remove the OEM inlets, there are 3 (10mm) screws that need to be removed. You will need a 6" extension to reach the recessed screw indicated with the red arrow. Hold on to these, some of them will be reused.



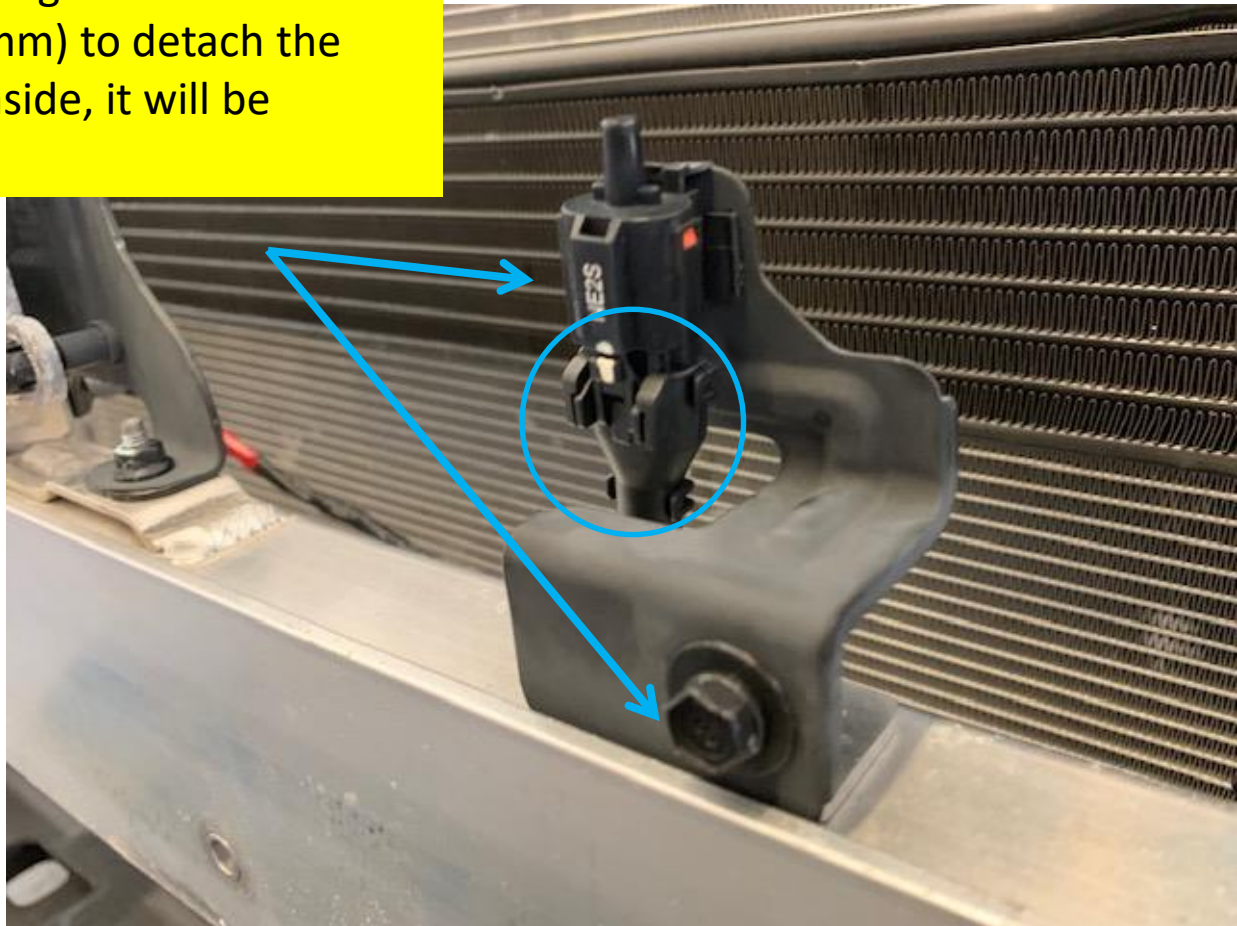
Shroud Removal

Disconnect the indicated connector.



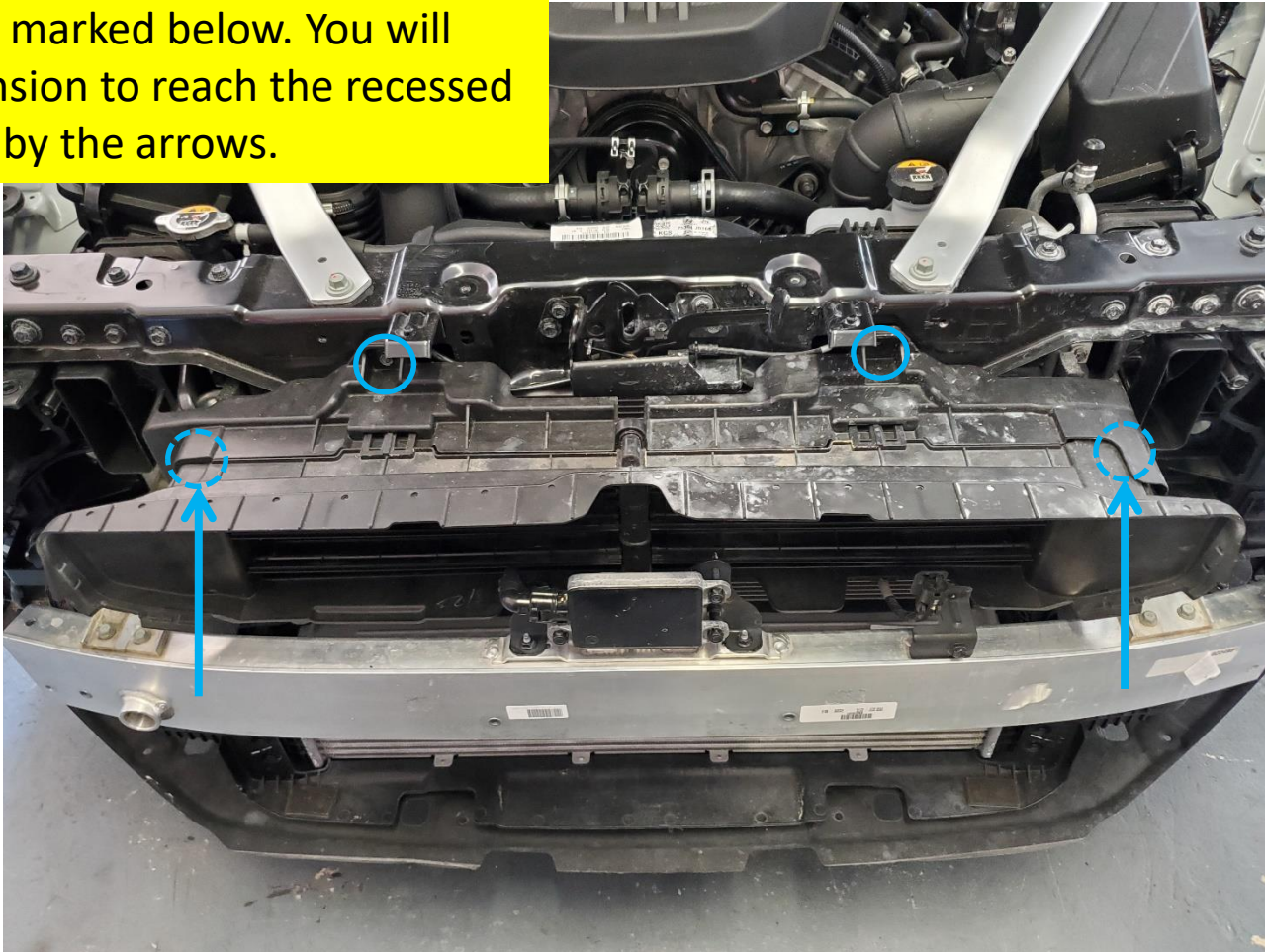
Shroud Removal

Disconnect the connector that is positioned in the highlighted area and remove the bolt (10mm) to detach the metal mount. Put it aside, it will be installed again.



Shroud Removal

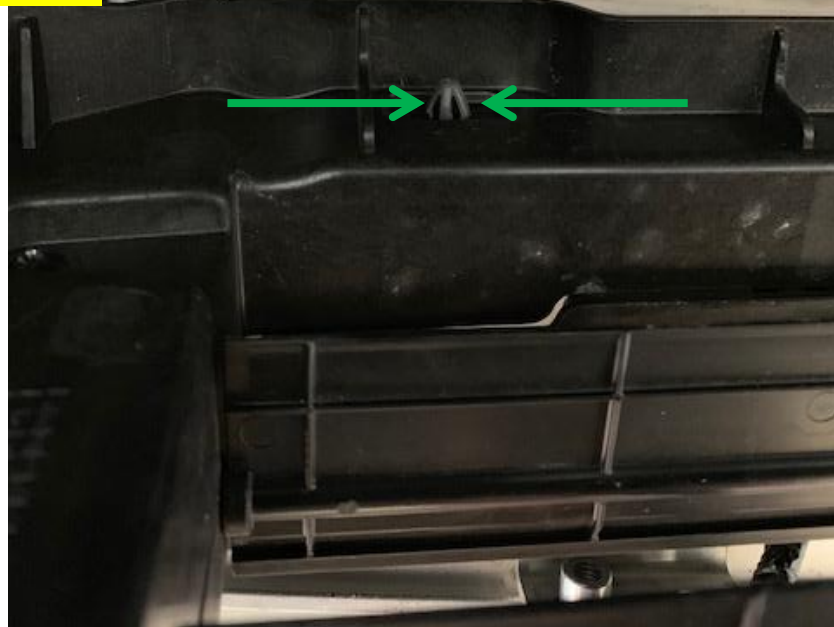
Detach the shroud by unfastening the 4 screws (10mm) marked below. You will need a 6" extension to reach the recessed screws marked by the arrows.



Shroud Removal

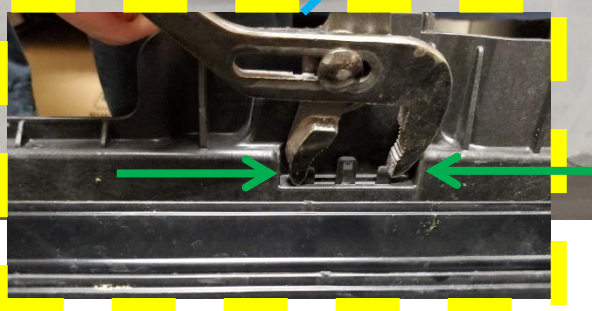
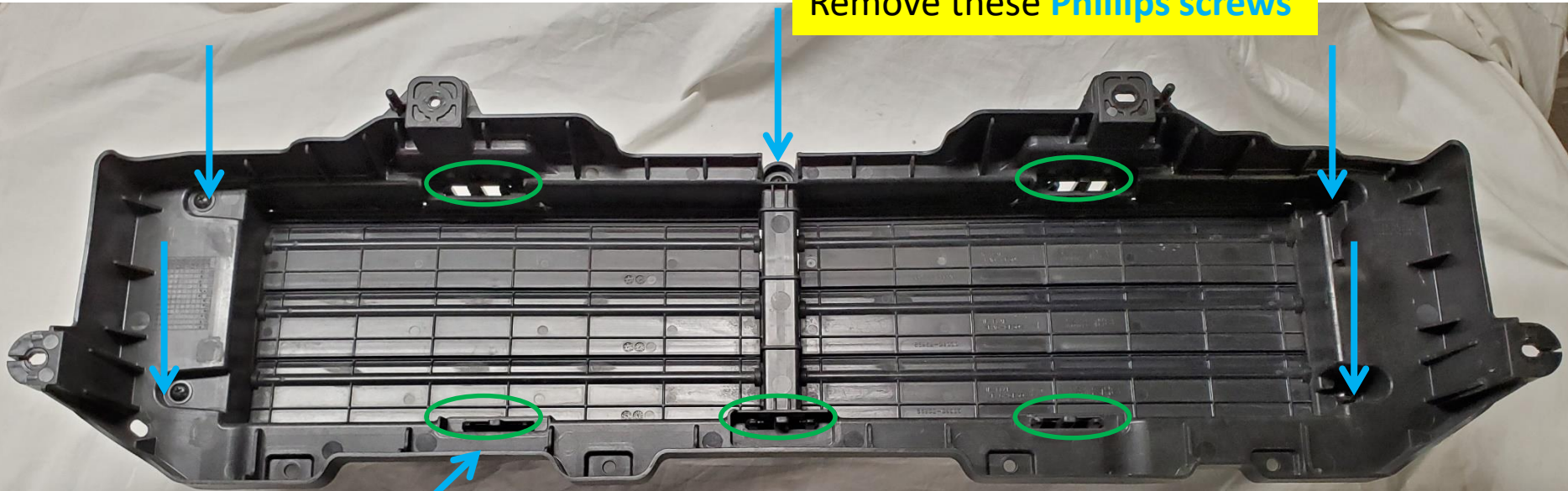
From the backside of the shroud, carefully undo the clips holding the wire loom by pinching as shown in the image. There are numerous clips along the shroud.

Once these have been undone, the shroud should be free to remove.



Shroud Disassembly

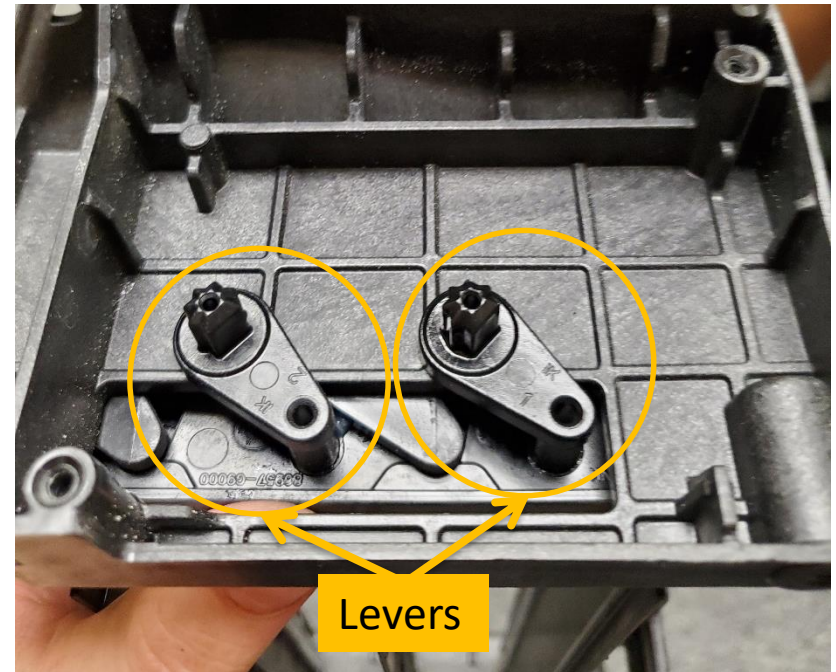
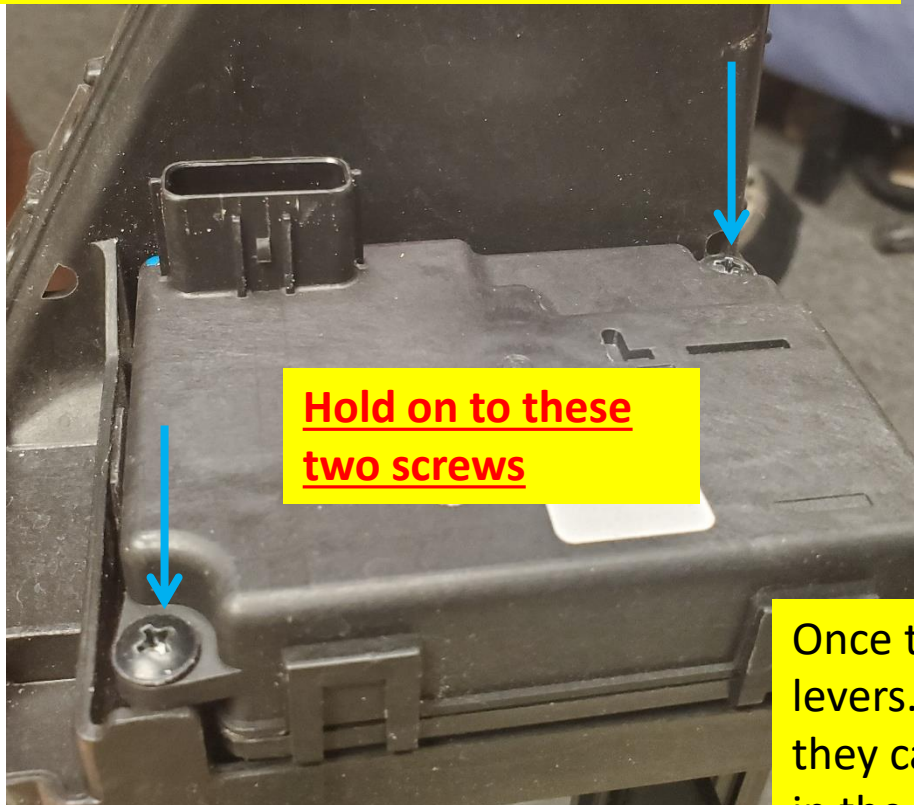
Remove these **Phillips screws**



Use channel locks on a wide setting to pinch these clips, keep them pulled back so they don't snap back in place as you move around the shroud.

AGS Servo Extraction

Once the AGS system has been detached from the car, you will need to remove the servo motor located on the side of the AGS shroud.



Once the motor is removed, you will see two AGS levers. These levers will need to be removed so they can be re-used in the AGS simulator bracket in the coming slides.

AGS Simulator Housing Assembly

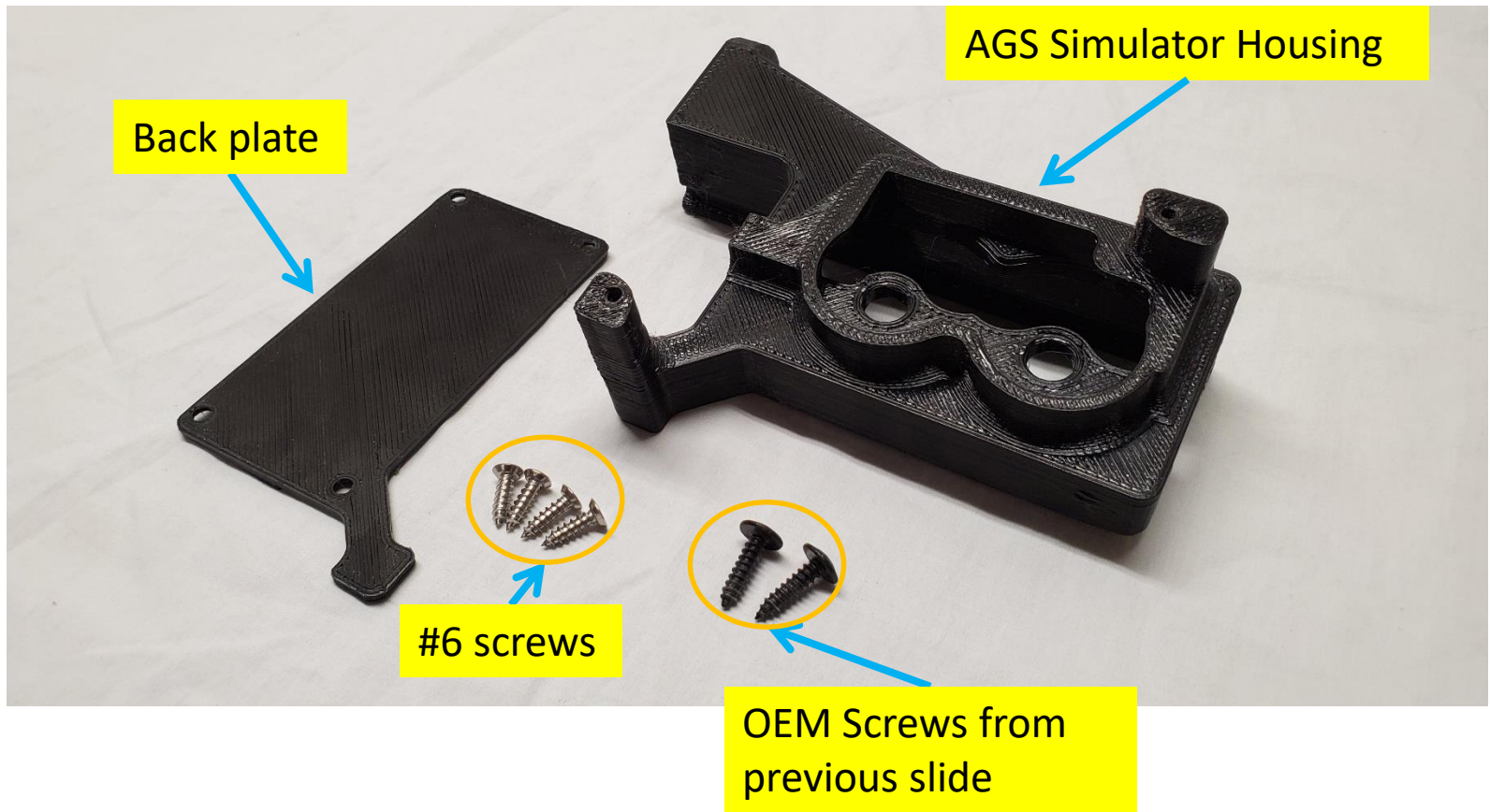
Note these stock components for reference





AGS Simulator Housing Assembly

These are the parts needed to fully assemble the AGS simulator. The AGS simulator is necessary to prevent an engine code.

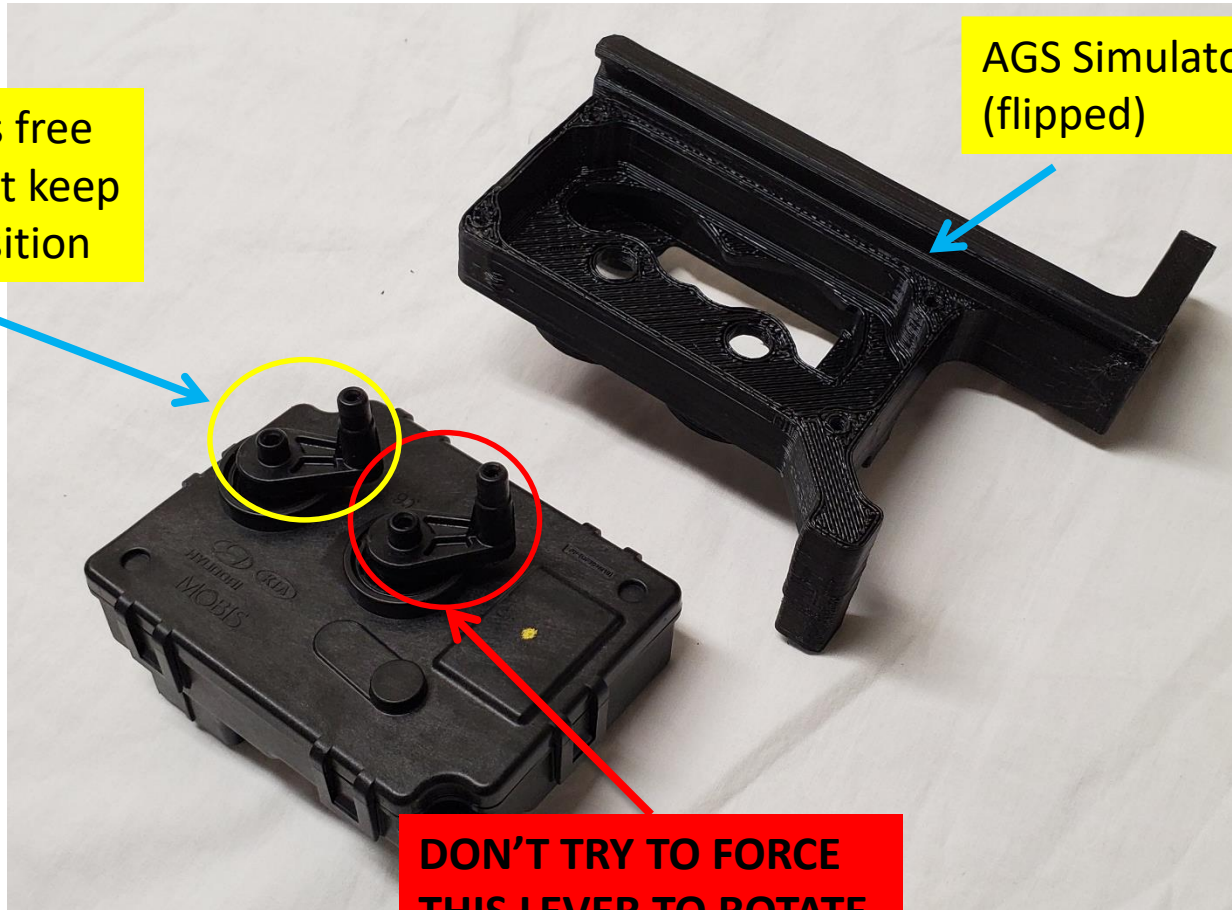


AGS Simulator Housing Assembly

Place levers back into motor casing. **IMPORTANT: THE RIGHT LEVER WILL NOT MOVE FREELY. DO NOT ATTEMPT TO ROTATE.**

Idle lever is free to move, but keep it in this position

AGS Simulator Housing (flipped)

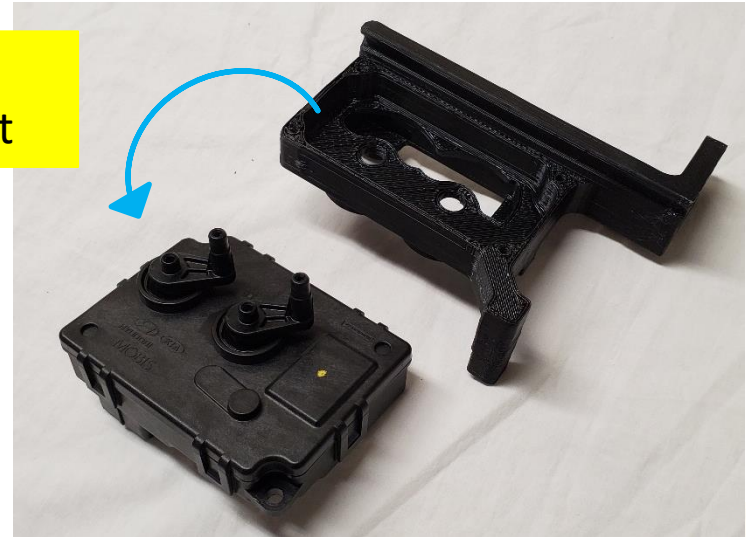


DON'T TRY TO FORCE THIS LEVER TO ROTATE

AGS Simulator Housing Assembly

Step 1: Orient
before placement

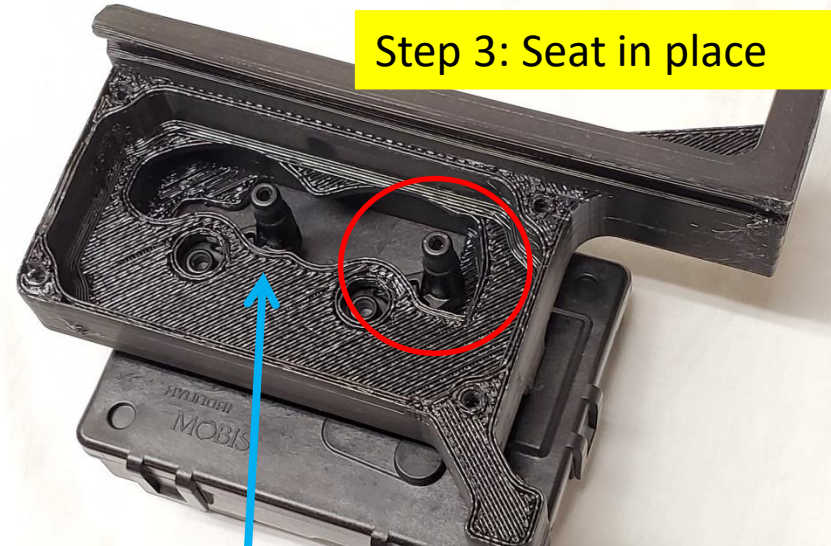
Place the AGS simulator housing over the levers, come in from the top/right side and slide the housing first onto the rightmost lever as shown. Then seat the housing and motor as shown in Step 3.



Step 2: Tilt in and position, it's ok to slide the lever out a little bit to get the housing to seat.



Step 3: Seat in place

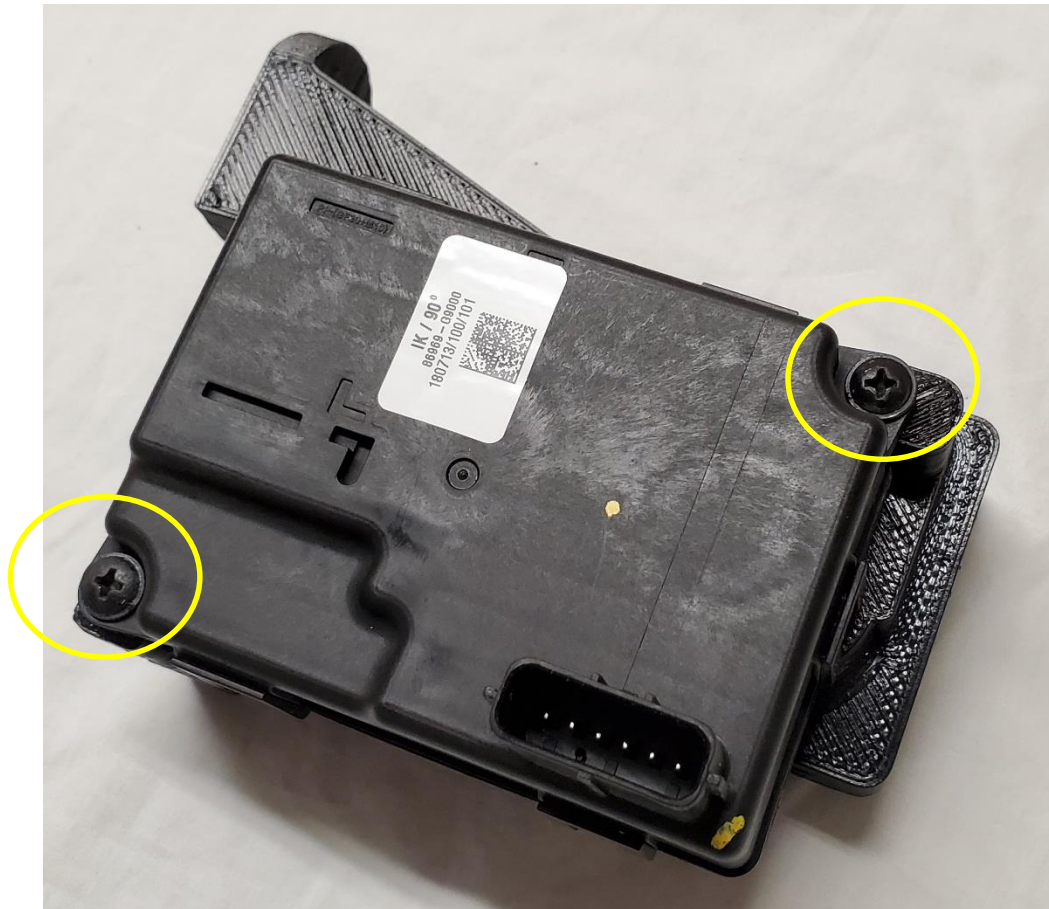


Bring the housing in from the top and slide the 'roof' area under this lever, then go to step 3.

Ensure this lever can move freely, **do not try and rotate the right-most lever!!**

AGS Simulator Housing Assembly

Re-use the two screws to fasten the motor to the AGS Simulator housing.



AGS Simulator Housing Assembly

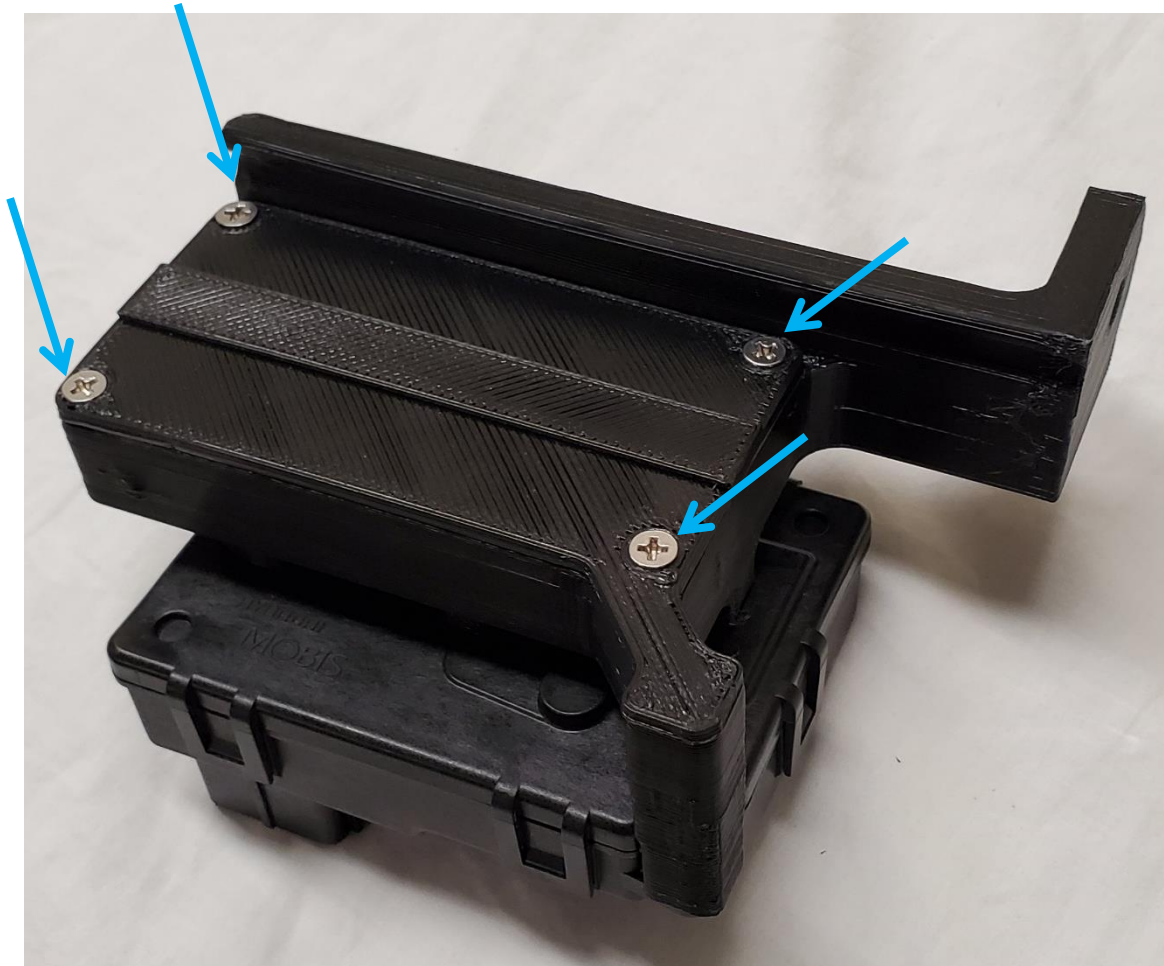
Flip the housing over and place the link onto the levers as shown, smooth side facing out. **Once this process is complete, do not try and move the levers, they are now linked.**





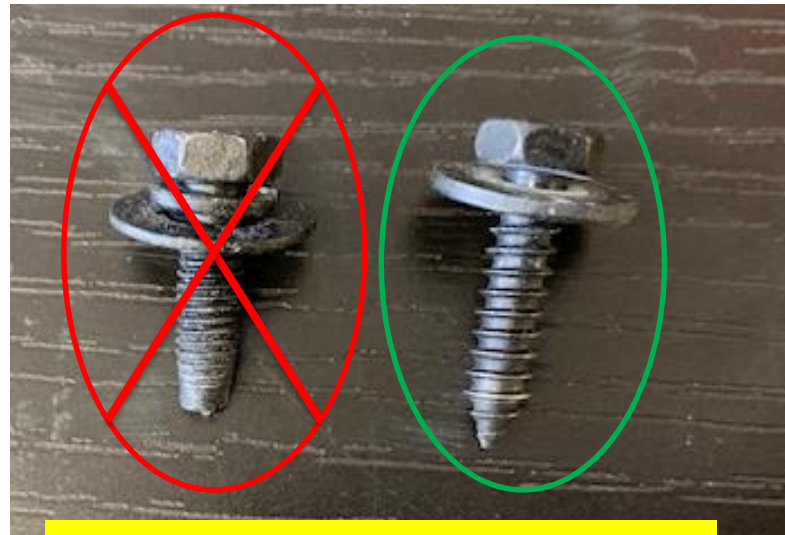
AGS Simulator Housing Assembly

Install cover with 4 x #6 screws as shown



AGS Simulator Housing Assembly

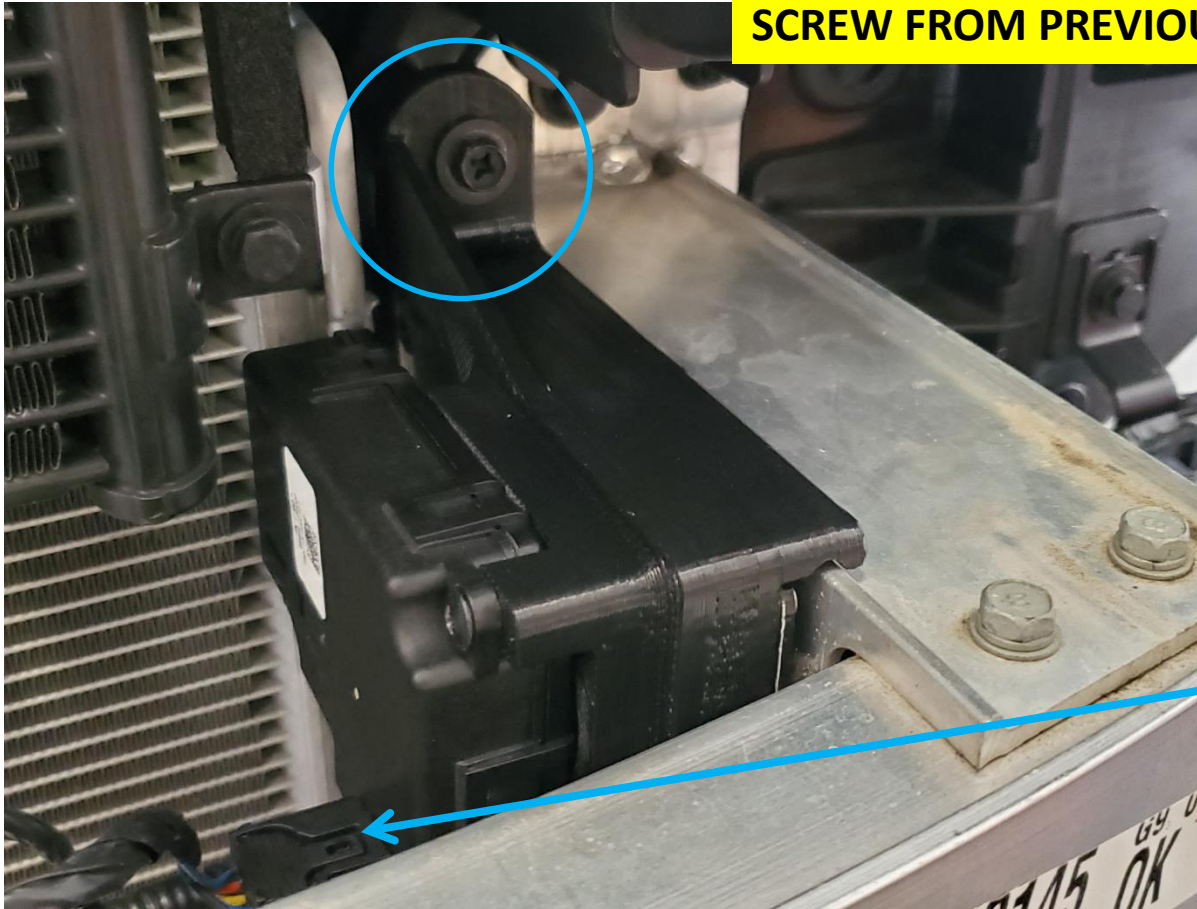
The installations that follow this slide only use **coarse-thread** hardware, shown on the right. The threads are much larger and spaced out. Also, the coarse-thread hardware ends with a sharp point.



IMPORTANT FOR NEXT SLIDE!!!

AGS Simulator Housing Install

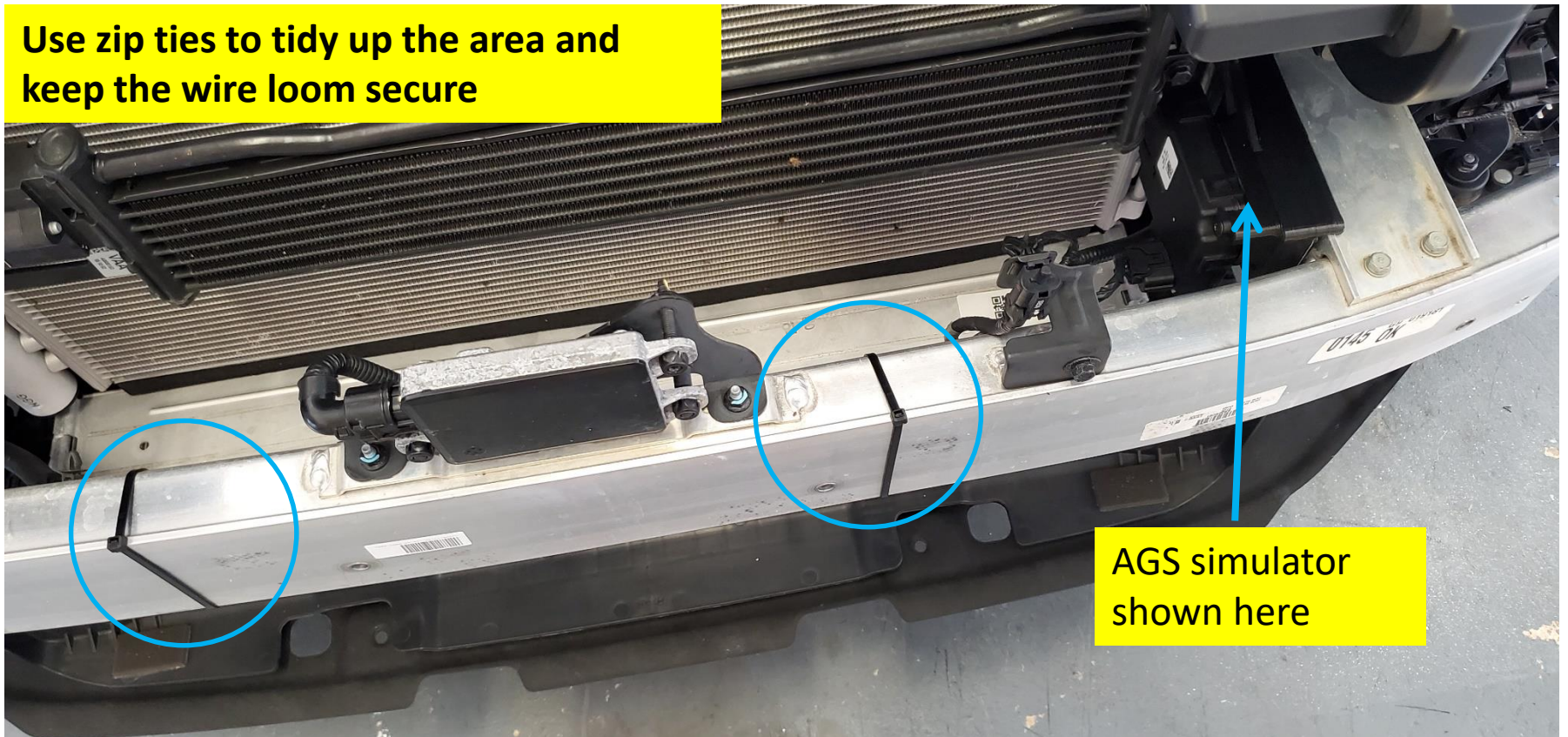
DO NOT CROSS-THREAD AND MAKE SURE **NOT TO OVERTORQUE**. USE SCREW FROM PREVIOUS SLIDE



Install the servo casing as shown and **plug the associated connector back in.**

AGS Simulator Housing Install

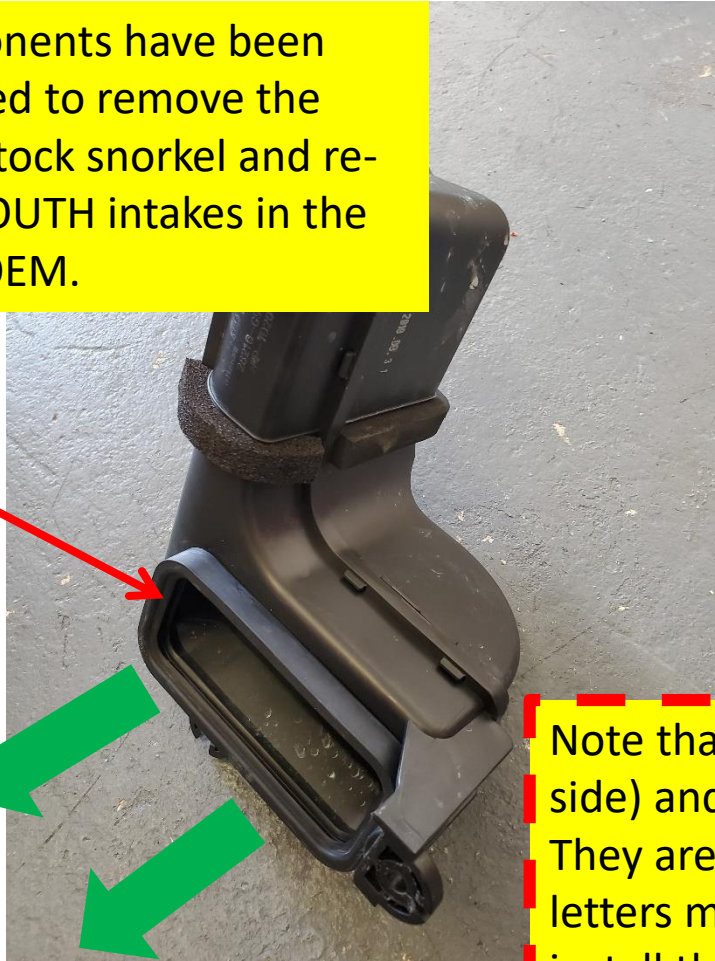
Use zip ties to tidy up the area and keep the wire loom secure



AGS simulator
shown here

Big Mouth Install

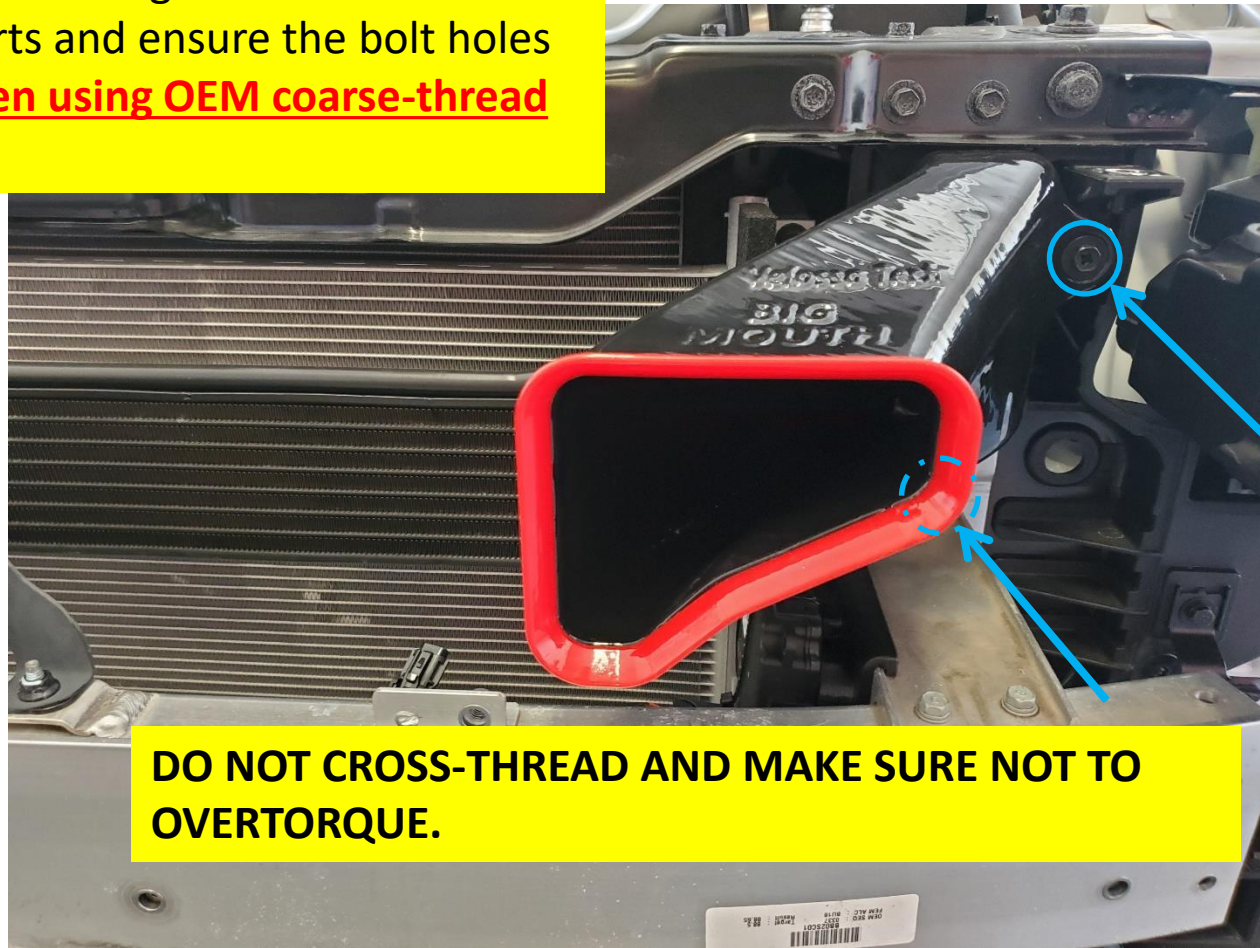
After the OEM components have been removed, you will need to remove the rubber seal on each stock snorkel and re-apply it to the BIG MOUTH intakes in the same orientation as OEM.



Note that R is RIGHT side (or passenger side) and L is LEFT side (or driver side). They are **NOT** interchangeable and the letters must be pointing up when you re-install them onto the BIG MOUTH intakes!

Big Mouth Install

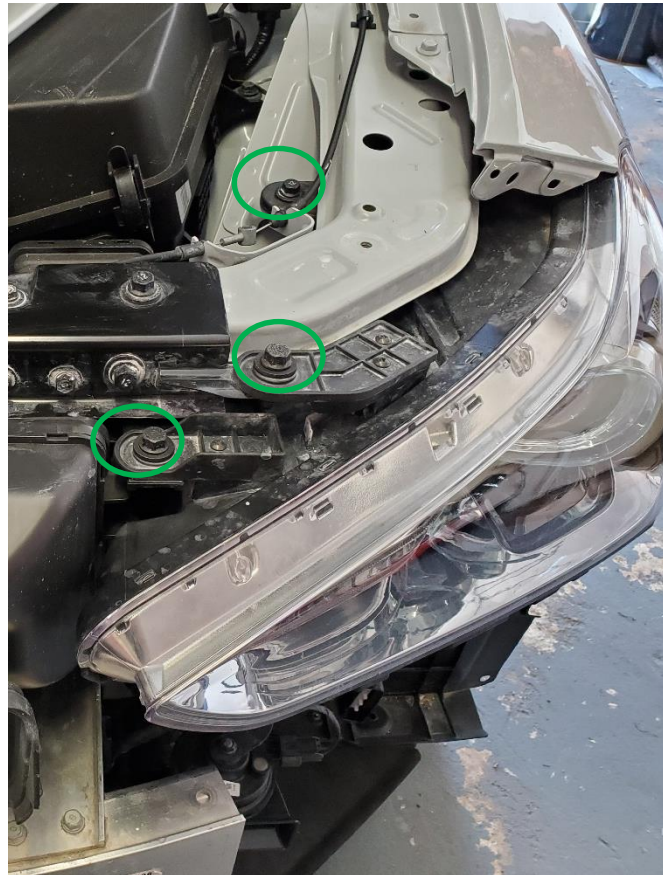
Carefully slide the Big Mouth intakes over the stock ports and ensure the bolt holes line up. **Fasten using OEM coarse-thread hardware.**



DO NOT CROSS-THREAD AND MAKE SURE NOT TO OVERTORQUE.

Reinstall Headlights

Fasten the headlights.



Reinstall Sensor

Reinstall the bracket shown and reconnect the associated connector.





Reinstall Bumper

Re-install the bumper the same way it was removed and ENJOY!

