



MK3 Focus ST
Stage 1
Brake Cooling Installation Guide



Kit Contents

Please review this document before attempting installation.

You will need basic hand tools and about 30 minutes of installation time.

Please review the table below and make sure you have received the kit contents.

Kit Contents	
Description	Qty
Driver side air duct	1
Passenger side air duct	1
M6 x 80mm bolt	2
M6 Locknut	2
M6 Wide washer	4

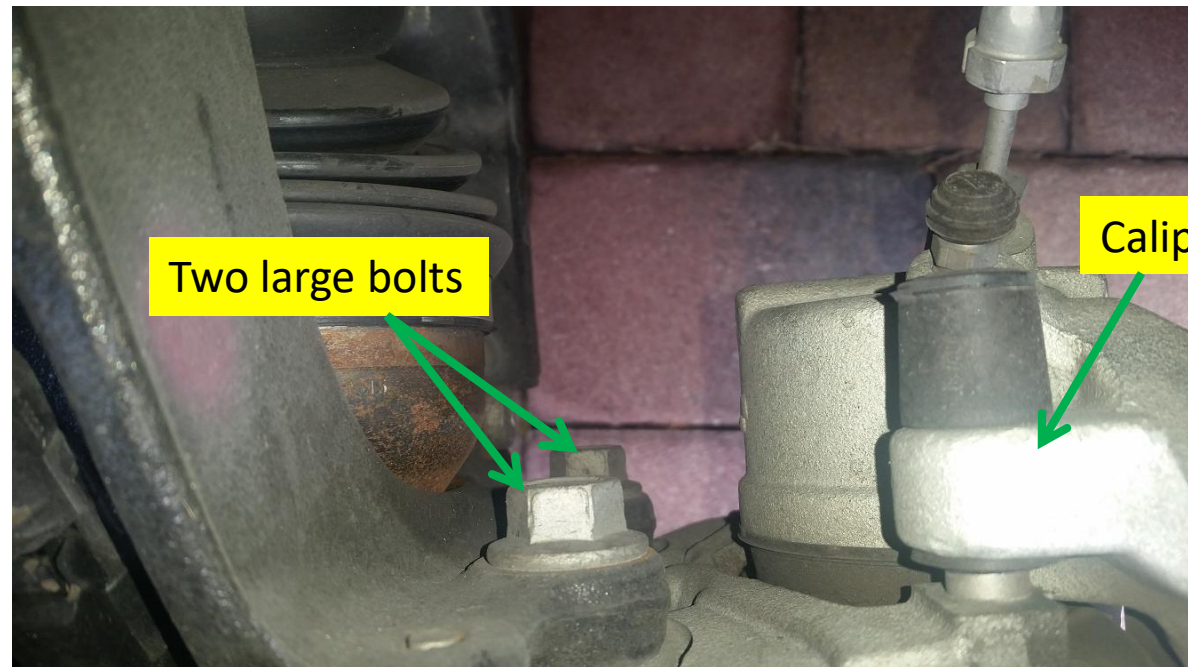


Remove Dust Shields

The following instruction applies to both sides of the car

Use an 18mm socket to remove the bolts holding the caliper to the hub assembly, you will need a long wrench to remove them carefully. Do not suspend the caliper from the brake line, use a piece of wood or cardboard box and support the weight of the caliper when working to remove the dust shield.

It is necessary to jack up the front of the car and secure with jackstands in a safe manner.



A-arm Fastening Points

With the A-arm exposed, locate the hole and groove shown. These will be used as fastening points.



Insert Bolt

Insert the 80mm bolt from the bottom of the A-arm.
Do not put a washer on the head of the bolt.
The washer goes on the top side of the A-arm, as shown.



Groove Alignment

Next, just place the duct over the hole and shimmy the duct until the pedestal is firmly seated inside the groove.

Do not use the bolt and nut to close the gap, it should close by itself once seated properly. You may have to shift the belly pan and flap up over the duct mouth.

Close this gap until there is about 1/8" of clearance. Gently wiggle the duct until it seats itself.



Groove Alignment

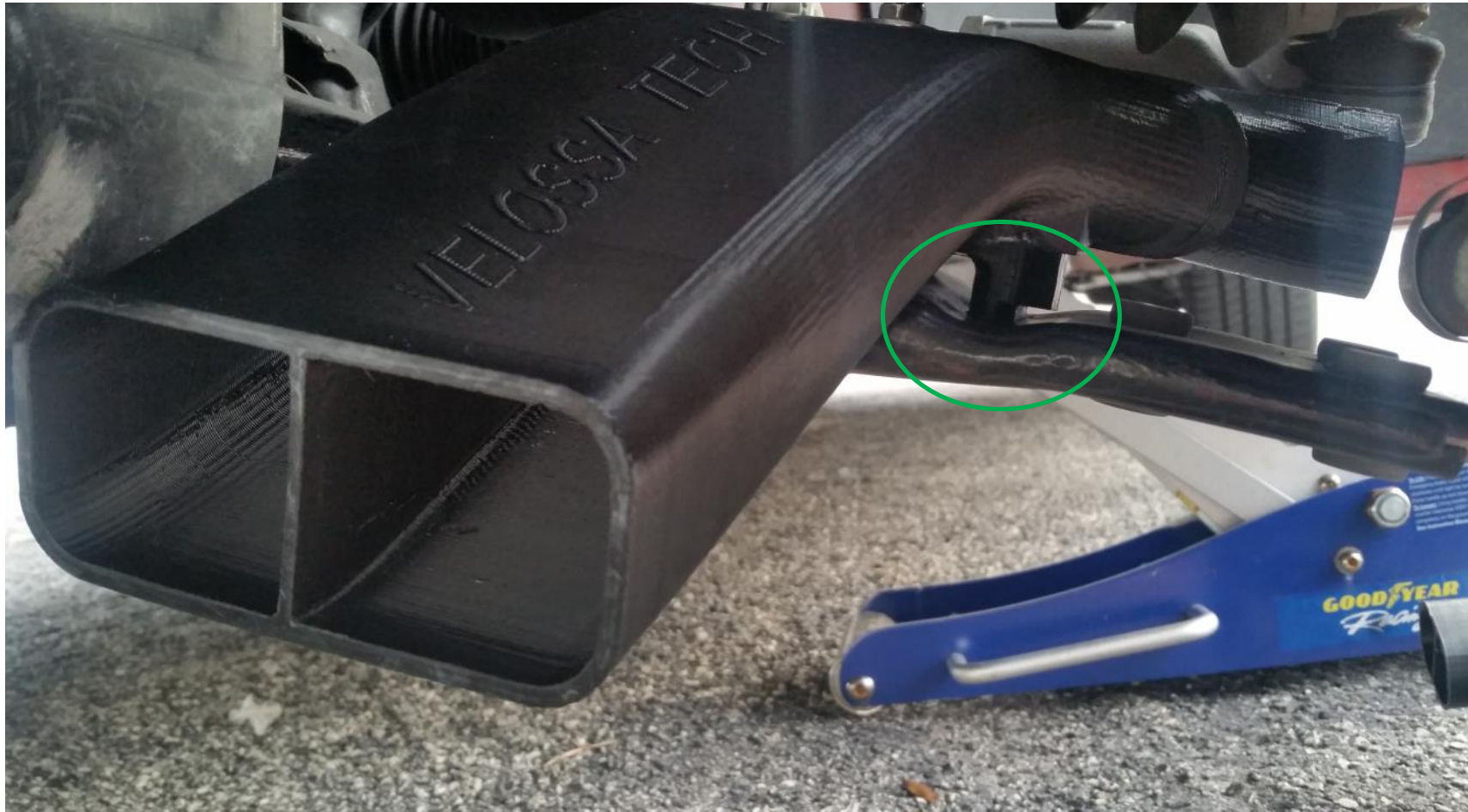
Sometimes pushing the bellypan up over the mouth of the duct helps seat it.





Pedestal Gap Closed

This is how the duct looks once seated, the gap is nearly closed.



Fastening

Once the duct is properly seated, you can thread the nut on. No need to torque down with a lot of force, just bottom out the bolt until the shaft just barely sticks out the top of the nut.



Put the second washer on the top side of the duct



Flap Tuck: Optional

Although not required, performing this small adjustment will maximize airflow to your brakes.

Locate the forward dirt flap under your wheel well



Use an Xacto to cut a ¼" slit right here...

Use existing Torx screw under bellypan, insert through slit and fasten





Finalize

- Enjoy your new high performance brake cooling!
- Although not necessary, it is suggested to remove the ducts when daily driving.
- Remember, after you track the car always do cool downs.
 - Just driving around the parking lot for a few minutes is enough to bring the rotors to a safe temperature