



# **2016-2018 Chevrolet Camaro SS / ZL1 BIG MOUTH Intake Installation Guide**



# Kit Contents

Please review this document before attempting installation.

You will need basic hand tools and about 2 hours of installation time.

Please review the table below and make sure you have received the kit contents.

| Description                      | Qty in kit |
|----------------------------------|------------|
|                                  | #          |
| M6 x 65mm socket head cap screw  | 1          |
| M6 x 100mm socket head cap screw | 1          |
| Steel mount plate                | 1          |
| M6 lock nut                      | 2          |





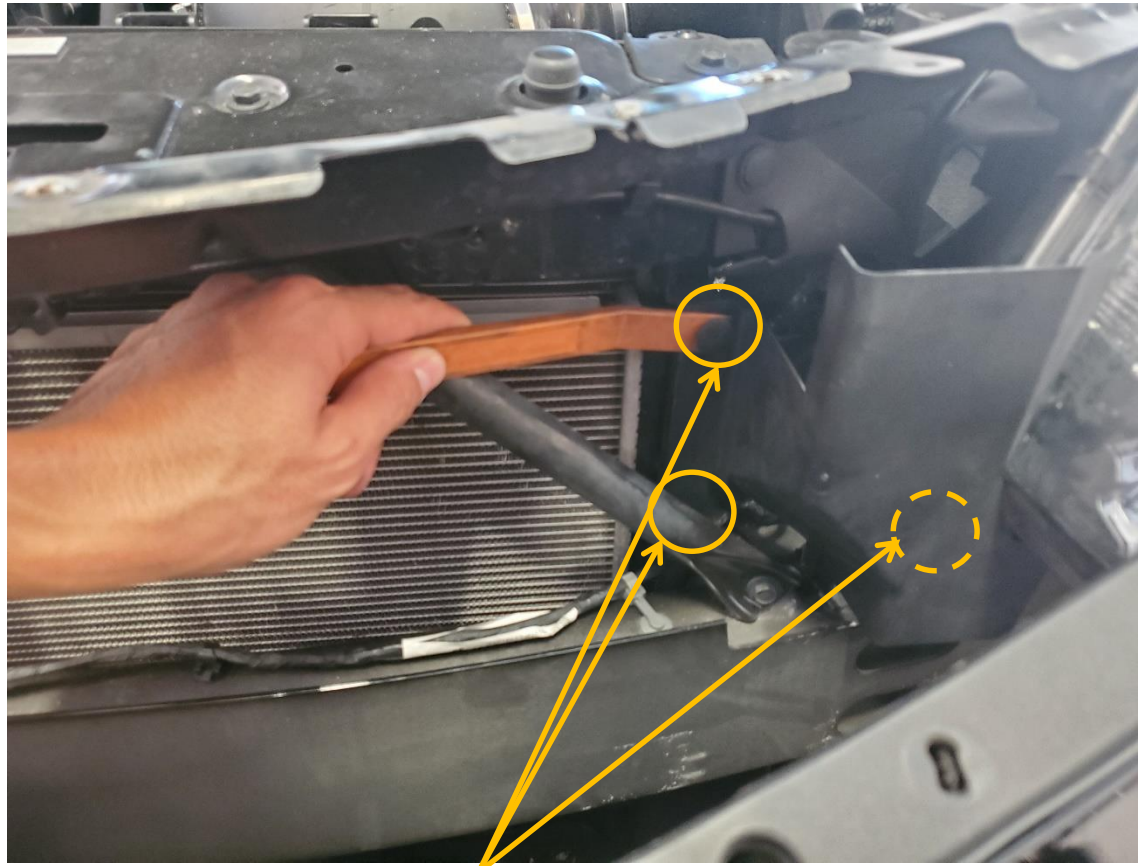
# Stock Components Removal

Get access to the area shown below by removing the top screws and wheel well screws of the bumper enough so that it can sit on the ground. Using a jack on the driver's side is suggested since it helps the bumper sit lower.



## Stock Components Removal

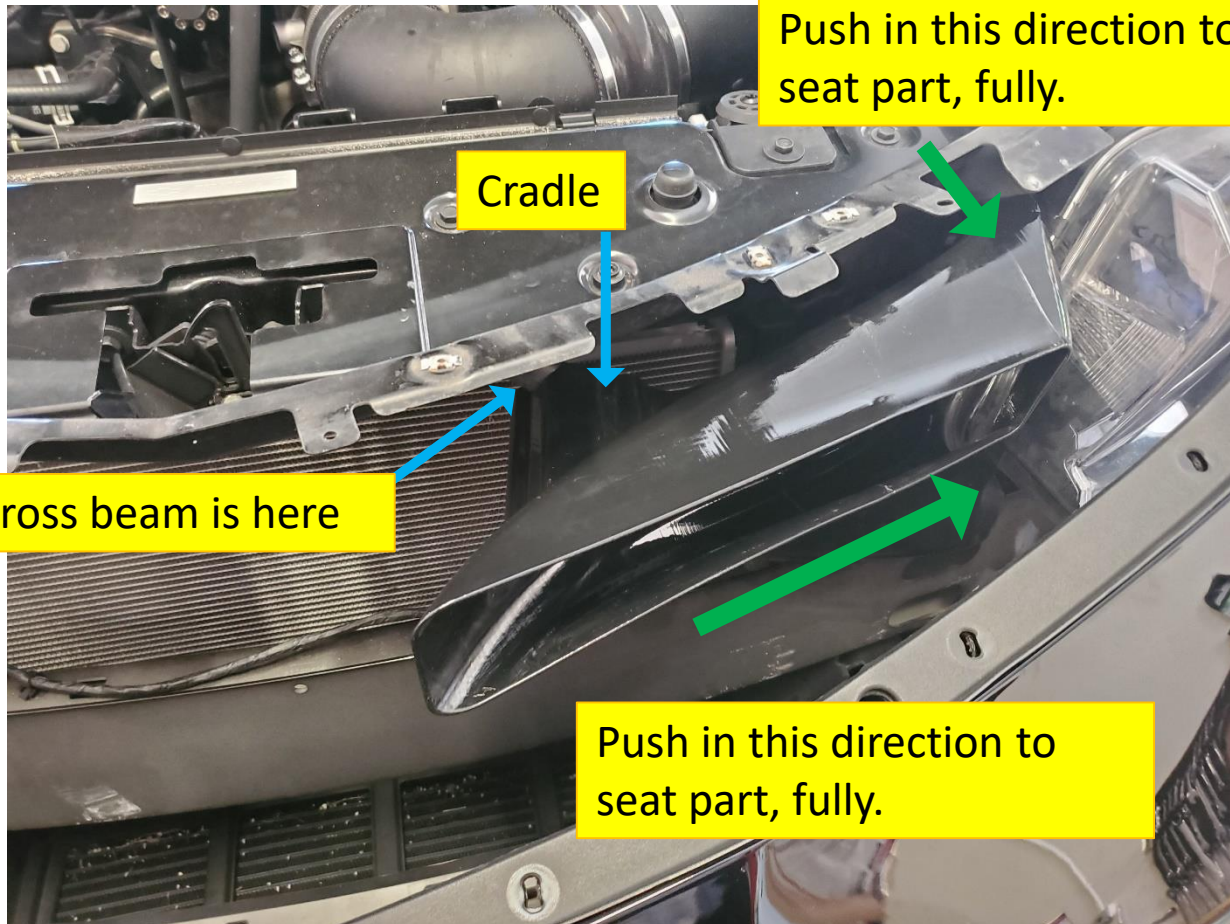
Begin by removing the 3 ribbed clips that hold this plastic piece to the radiator shroud and crash bar.



Use a non-marring pry tool to assist you.

# Stock Component Removal

The Big Mouth is meant to be tucked as shown below. Ensure that the cradle mounting region grips the diagonal crossbeam. Push the rightmost area up against the headlight and push down.



Diagonal cross beam is here

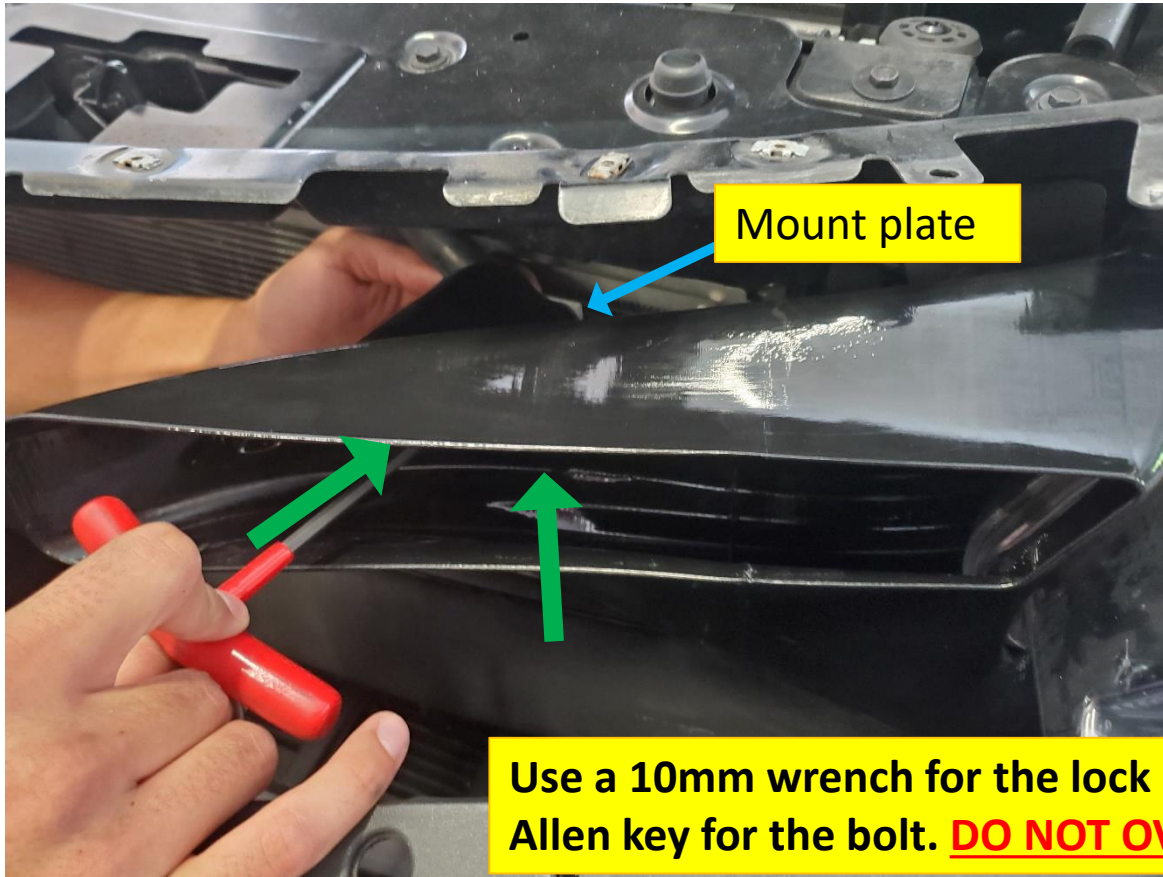
Cradle

Push in this direction to seat part, fully.

Push in this direction to seat part, fully.

## Big Mouth Installation

Place the mount plate behind the crossbeam and insert the 65mm bolt through the right-side hole. Spin the nut on by hand, do not tighten yet. Insert the 100mm bolt in the passenger side hole and begin tightening both nuts in an alternating pattern, **SNUG IS ENOUGH.**





## Finalize

Re-install the bumper the same way it was removed and ENJOY!

