

# Flynn 3 1/2 in. center-to-center pull



Satin Brass - RL062678



Chrome - RL062692



Satin Nickel - RL062661



Matte Black - RL062685

## SPECIFICATIONS

### DIMENSIONS

Center to Center: 3.5 in. **(A)**

Overall length: 5.5 in. **(B)**

Projection: 1.13 in.

Height: 0.50 in.

Weight: 0.34 lbs.

### INSTALLATION

#8-32 1 in. & 1.5 in. screws included

### WARRANTY

Lifetime Guarantee

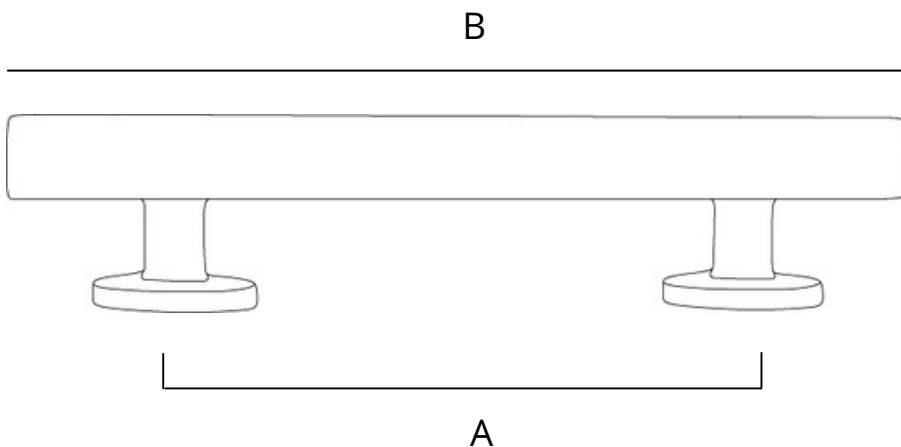
### THE FLYNN COLLECTION INCLUDES:

1 7/8 in. knob

3 1/2 in. center-to-center pull

5 1/2 in. center-to-center pull

All offered in matte black, satin brass, satin nickel, and chrome



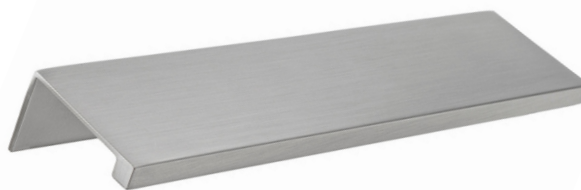
# Ethan 4 in. center-to-center lip pull



Satin Brass - RL063248



Matte Black - RL063255



Satin Nickel - RL063231

## SPECIFICATIONS

### DIMENSIONS

Center to center: 4 in. **(A)**

Overall length: 6 in. **(B)**

Projection: 1.5 in.

Height: 0.88 in.

Weight: 0.24 lbs.

### INSTALLATION

#6 1/2 in. wood screws included

### WARRANTY

Lifetime Guarantee

### THE ETHAN COLLECTION INCLUDES:

1.25 in. center-to-center pull

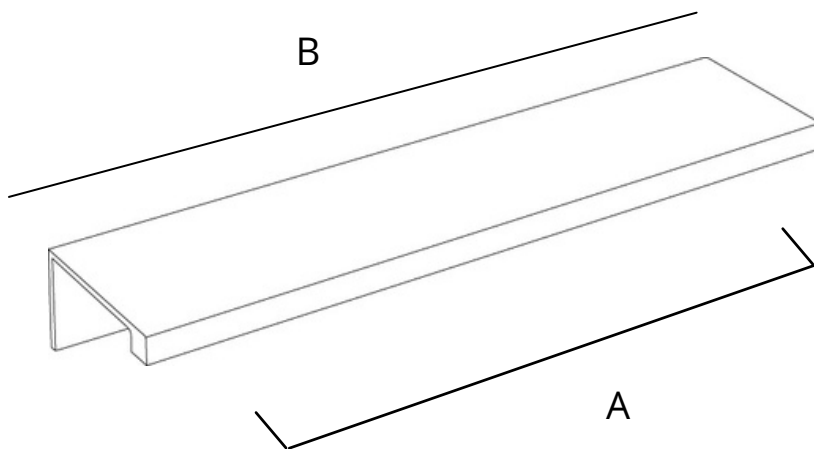
3 in. center-to-center pull

4 in. center-to-center pull

1.625 in. knob

1.25 in. knob

All offered in matte black, satin brass, and satin nickel



# Vail 2 in. bar knob



Satin Nickel - RL062005



Matte Black - RL062500



Chrome - RL062517



Satin Brass - RL062111

## SPECIFICATIONS

### DIMENSIONS

Center to center: single bore

Overall length: 2 in. **(A)**

Projection: 1.38 in. **(B)**

Height: 0.38 in.

Weight: 0.11 lbs.

### INSTALLATION

#8-32 1 in. & 1.5 in. screws included

### WARRANTY

Lifetime Guarantee

### THE VAIL COLLECTION INCLUDES:

2 in. knob

4 in. center-to-center pull

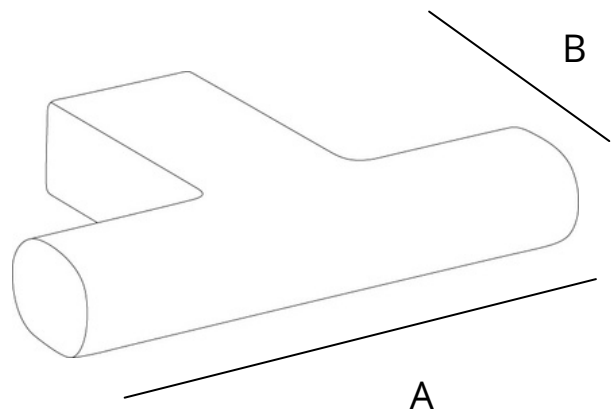
6 in. center-to-center pull

8 in. center-to-center pull

10 in. center-to-center pull

12 in. center-to-center pull

All offered in matte black, satin brass, satin nickel, and chrome



# Kent Knurled 7 in. center-to-center pull



Satin Brass - RL063125



Black Nickel - RL063120



Matte Black - RL063132



Satin Nickel - RL063118

## SPECIFICATIONS

### DIMENSIONS

Center to center: 7 in. **(A)**

Overall length: 7.41 in. **(B)**

Projection: 1.28 in.

Height: 0.63 in.

Weight: 0.31 lbs.

### INSTALLATION

#8-32 1 in. & 1.5 in. screws included

### WARRANTY

Lifetime Guarantee

### THE KENT COLLECTION INCLUDES:

1 1/8 in. knob

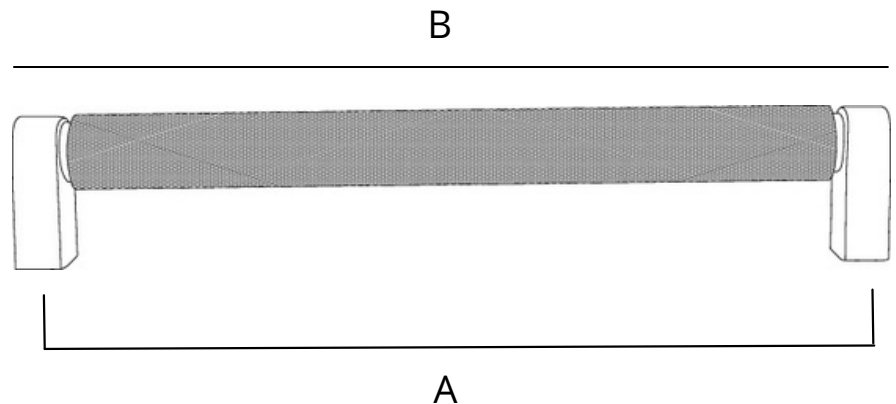
1 3/8 in. knob

4 in. center-to-center pull

7 in. center-to-center pull

12 in. center-to-center pull

All offered in matte black, satin brass, black nickel, and satin nickel



# Mason 6 ¼ in. center-to-center pull



Oil Rubbed Bronze - RL063533



Satin Brass - RL063555



Polished Nickel - RL063527



Matte Black - RL063547



Satin Nickel - RL063520

## SPECIFICATIONS

### DIMENSIONS

Center to center: 6.25 in. **(A)**

Overall length: 7 in. **(B)**

Projection: 1.22 in.

Height: 0.75 in.

Weight: 0.26 lbs.

### INSTALLATION

#8-32 1 in. & 1.5 in. screws included

### WARRANTY

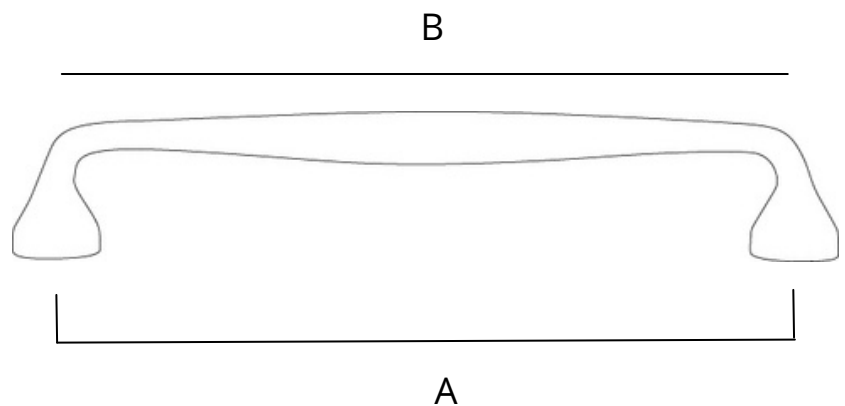
Lifetime Guarantee

### THE MASON COLLECTION INCLUDES:

4 ¼ in. center-to-center pull

6 ¼ in. center-to-center pull

All offered in matte black, satin nickel, satin brass, polished nickel, and oil rubbed bronze



# High Desert 3 ½ in. center-to-center pull



Matte Black - RL062142



Satin Nickel - RL061138



Oil Rubbed Bronze - RL061145



Satin Brass - RL062135

## SPECIFICATIONS

### DIMENSIONS

Center to center: 3.5 in. **(A)**

Overall length: 4.5 in. **(B)**

Projection: 1 in.

Height: 0.63 in.

Weight: 0.21 lbs.

### INSTALLATION

#8-32 1 in. & 1.5 in. screws included

### WARRANTY

Lifetime Guarantee

### THE HIGH DESERT COLLECTION INCLUDES:

1 in. knob

1 ¼ in. overall length tab pull

3 ½ in. center-to-center pull

4 ¾ in. center-to-center pull

All offered in matte black, satin brass, satin nickel, and oil rubbed bronze

\*Tab pull only offered in satin nickel and oil rubbed bronze

