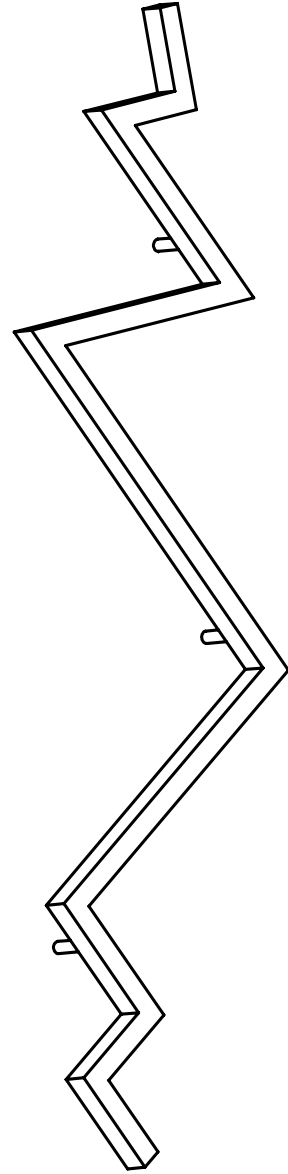


hollis+morris

**bolt
sconce 5'**

product installation + specifications



bolt sconce

product code:

BOLTsconce

materials:

- + solid W.Oak or Walnut
- + 24V LED extrusion
- + suspension hardware

finish:

- + hardwax oil
- + stainless steel hardware

input:

- + 120V 50/60 Hz (Canada + US)

driver options:

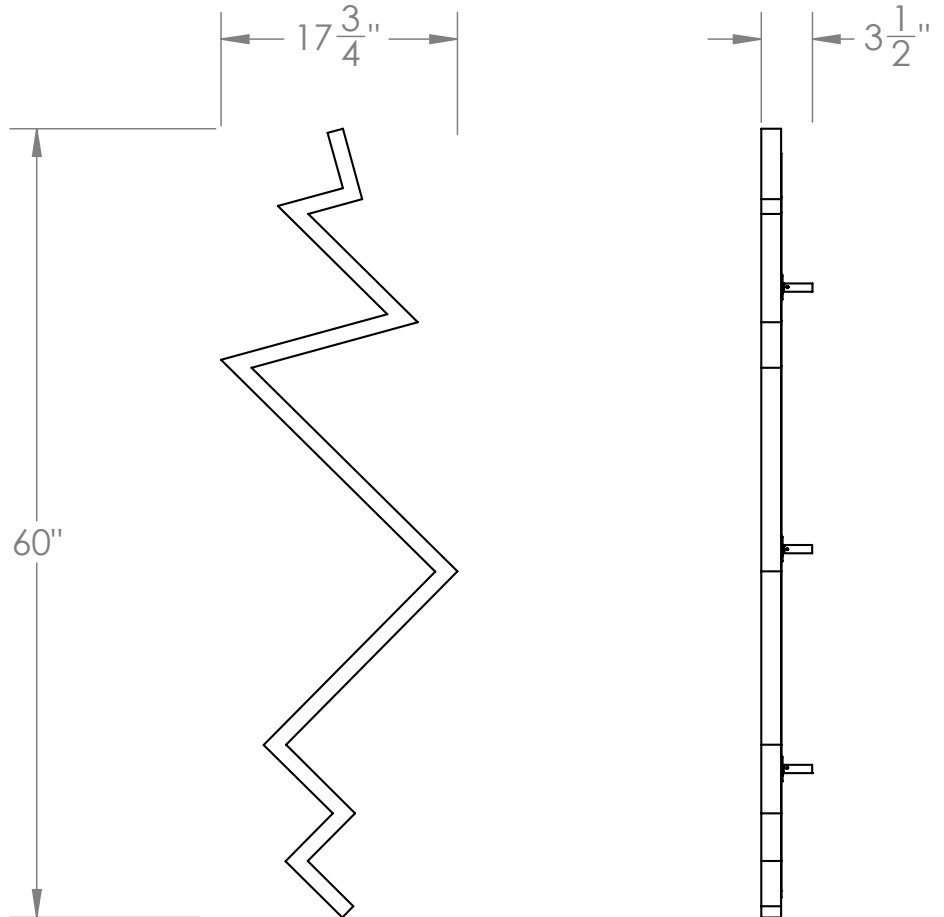
- + 120V- 24V fully dimmable driver included with canopy

output:

- + 75 Watts (14.5 W/metre)
- + 3000K with CRI of 95 or higher
- + 5700 lumens
- + equivalent incandescent- 75-100W

mounting:

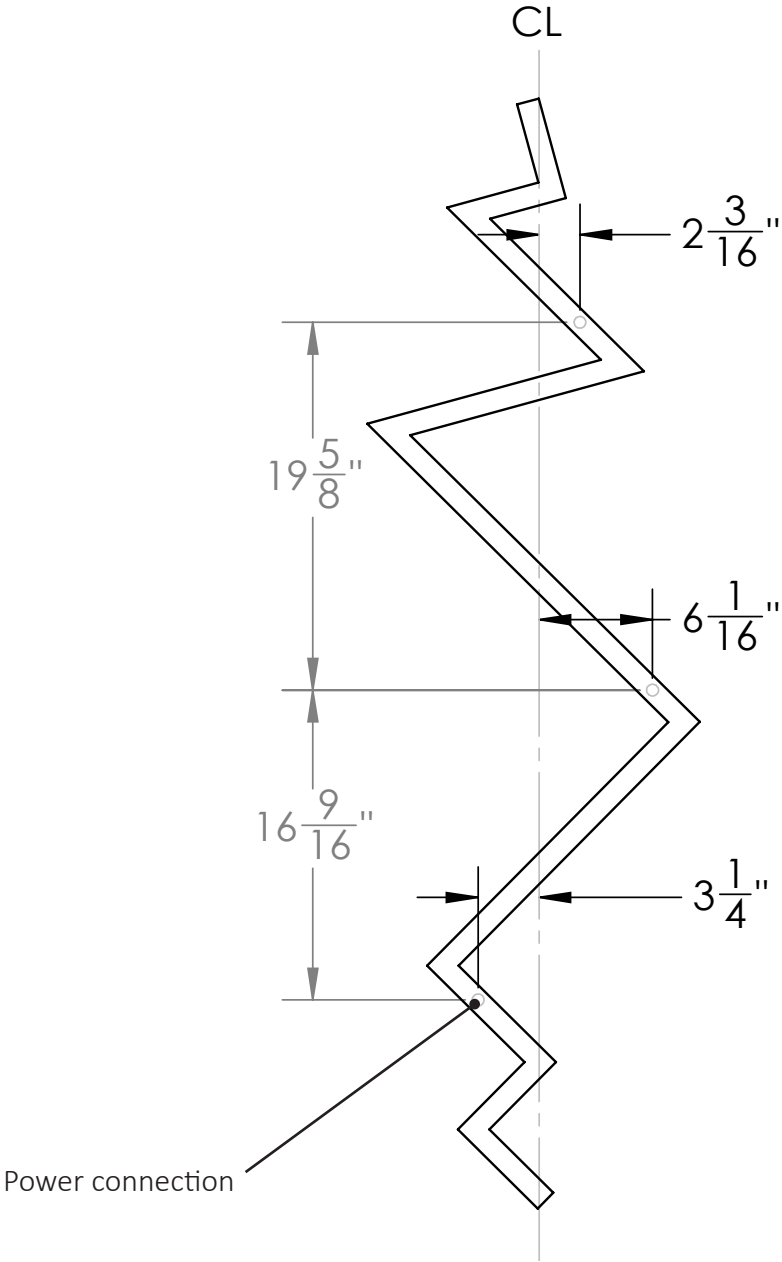
- + junction box connection
- + 3-point connection
- + surface mount canopy or remote driver capability



certification:



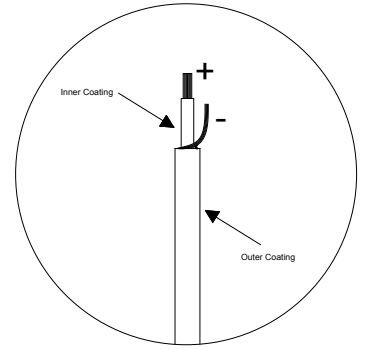
dimensions + installation



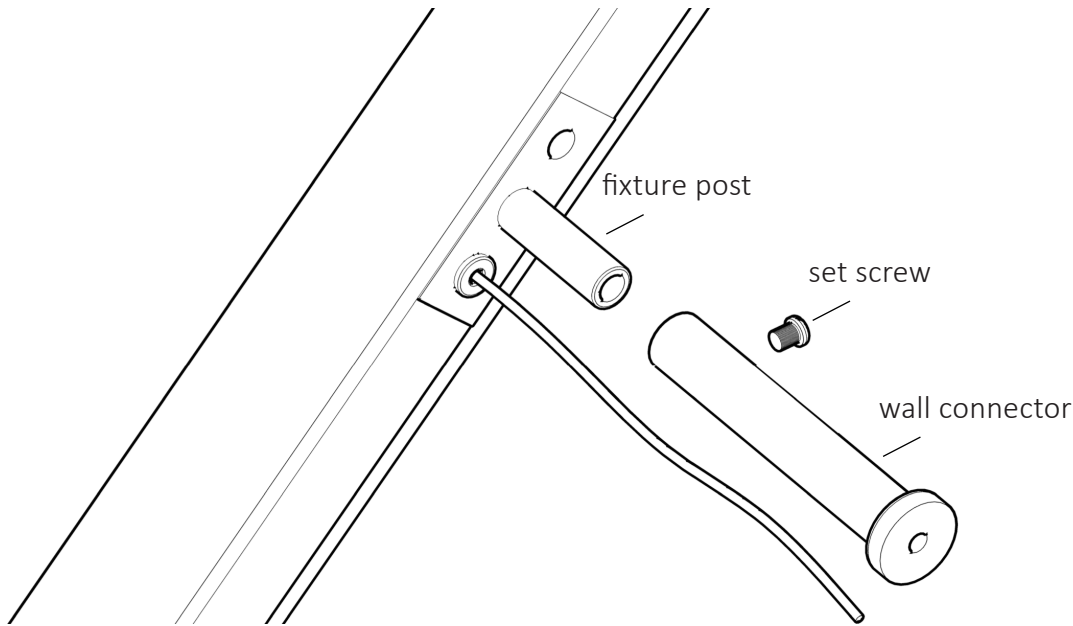
elevation view- wall connection points
*approximate connector locations +/- .05"

hardware installation

*** COAX CABLE



coax cable requires stripping of outer and inner coatings to access positive and negative connection wires



1. Locate wall hardware locations and trace on wall
2. Attach wall connectors to wall with provided screws + wall anchors
3. Slide fixture posts into wall connector hardware + tighten set screw to secure

Wiring Options

A (canopy mounting):

- + place driver in canopy
- + use short sconce canopy hardware
- + have a certified electrician connect 120V to supplied driver
- + feed 24V wire from fixture post location to driver and secure all connections

B (plate mounting):

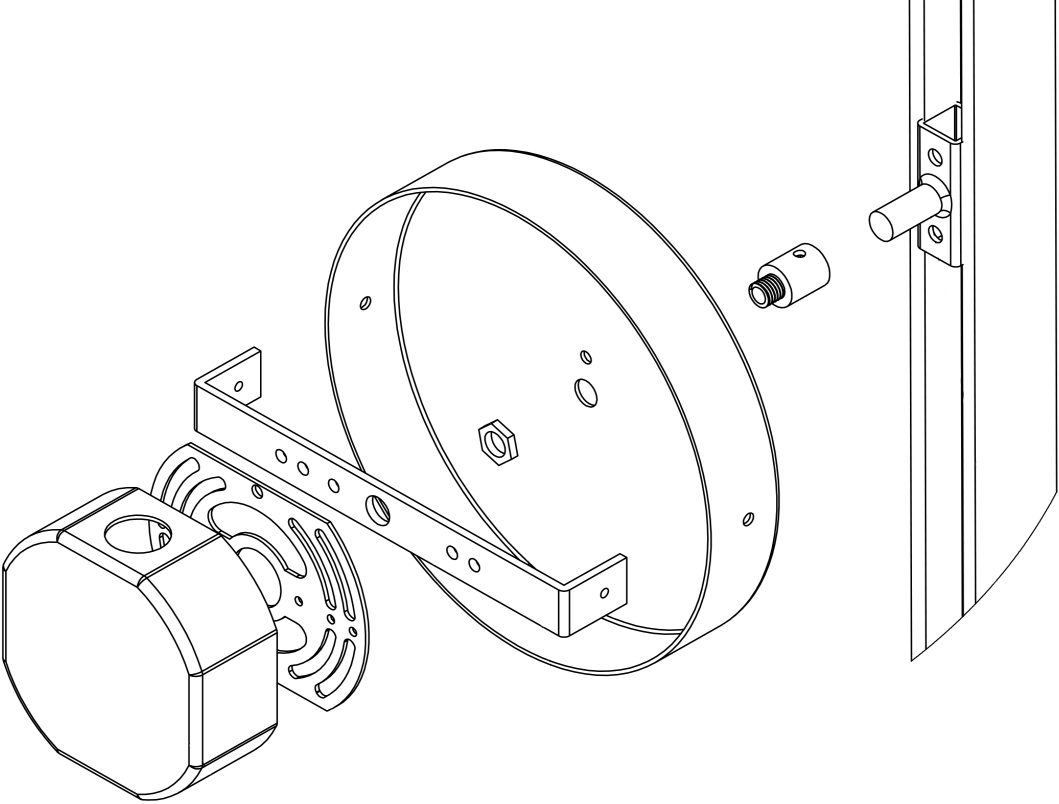
- + place driver in junction box
- + have a certified electrician connect 120V to supplied driver
- + feed 24V wire from fixture post location to driver
- + cover with junction cover plate and secure all connections

C (remote driver):

- + have a certified electrician connect 120V to supplied driver
- + feed 24V wire from fixture post location to remote driver and secure all connections

wiring options

Option A



Option B

