



**LAH.08.10700**  
Kawasaki KLR 650  
Lower Light Mounting Bracket

### Thank you for choosing DENALI

We know you would rather be riding your bike than wrenching on it, so we go the extra mile to make sure our instructions are clear and as easy to understand as possible. If you have any questions, comments, or suggestions don't hesitate to give our gear experts a call at 401.360.2550 or visit [WWW.DENALIELECTRONICS.COM](http://WWW.DENALIELECTRONICS.COM)

### Please Read Before Installing

DENALI products should always be installed by a qualified motorcycle technician. If you are unsure of your ability to properly install a product, please have the product installed by your local motorcycle dealer. DENALI takes no responsibility for damages caused by improper installation. **Caution:** When installing electronics it is extremely important to pay close attention to how wires are routed, especially when mounting products to the front fender, front forks, or fairing of your motorcycle. Always be sure to turn the handlebars fully left, fully right, and fully compress the suspension to ensure the wires will not bind and have enough slack for your motorcycle to operate properly.

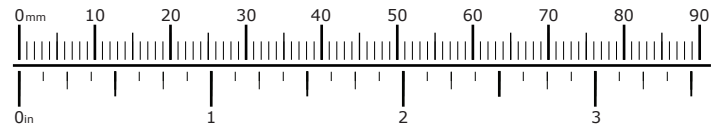
### Installation Tips

We strongly recommend using medium strength liquid thread locker on all screws, nuts, and bolts. It is also important to ensure that all hardware is tightened to the proper torque specifications as listed in your owner's manual. For included accessory hardware please refer to the default torque specifications provided below. Inspect all hardware after the first 30 miles to ensure proper torque specifications are maintained.

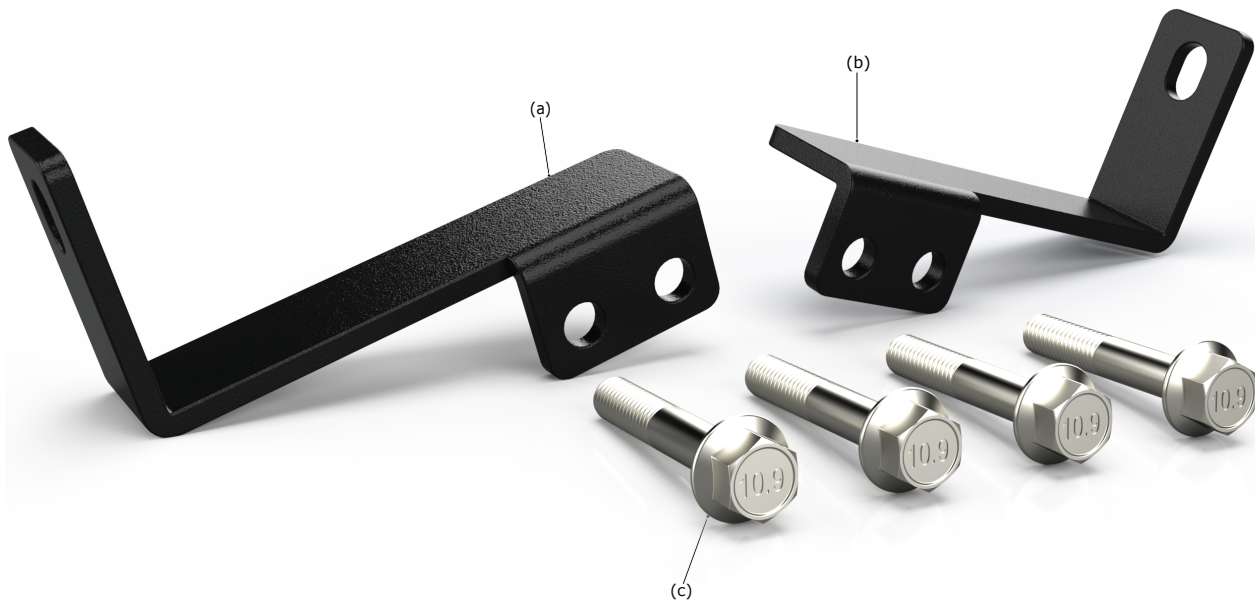
Bolt Size	in-lbs	ft-lbs	Nm
M3	10.0 in-lbs	-	1.0 Nm
M4	23.0 in-lbs	-	2.5 Nm
M5	44.5 in-lbs	3.5 ft-lbs	5.0 Nm
M6	78.0 in-lbs	6.5 ft-lbs	9.0 Nm
M8	-	13.5 ft-lbs	18.0 Nm
M10	-	30.0 ft-lbs	41.0 Nm
M12	-	52.0 ft-lbs	71.0 Nm

### Hardware Sizing Guide

Not sure what size bolt you have? Use this ruler to measure screws, bolts, spacers, etc. Remember, the length of a screw or bolt is measured from the start of the "mounting surface" to the end of the screw, so only include the screw head when measuring countersunk screws.



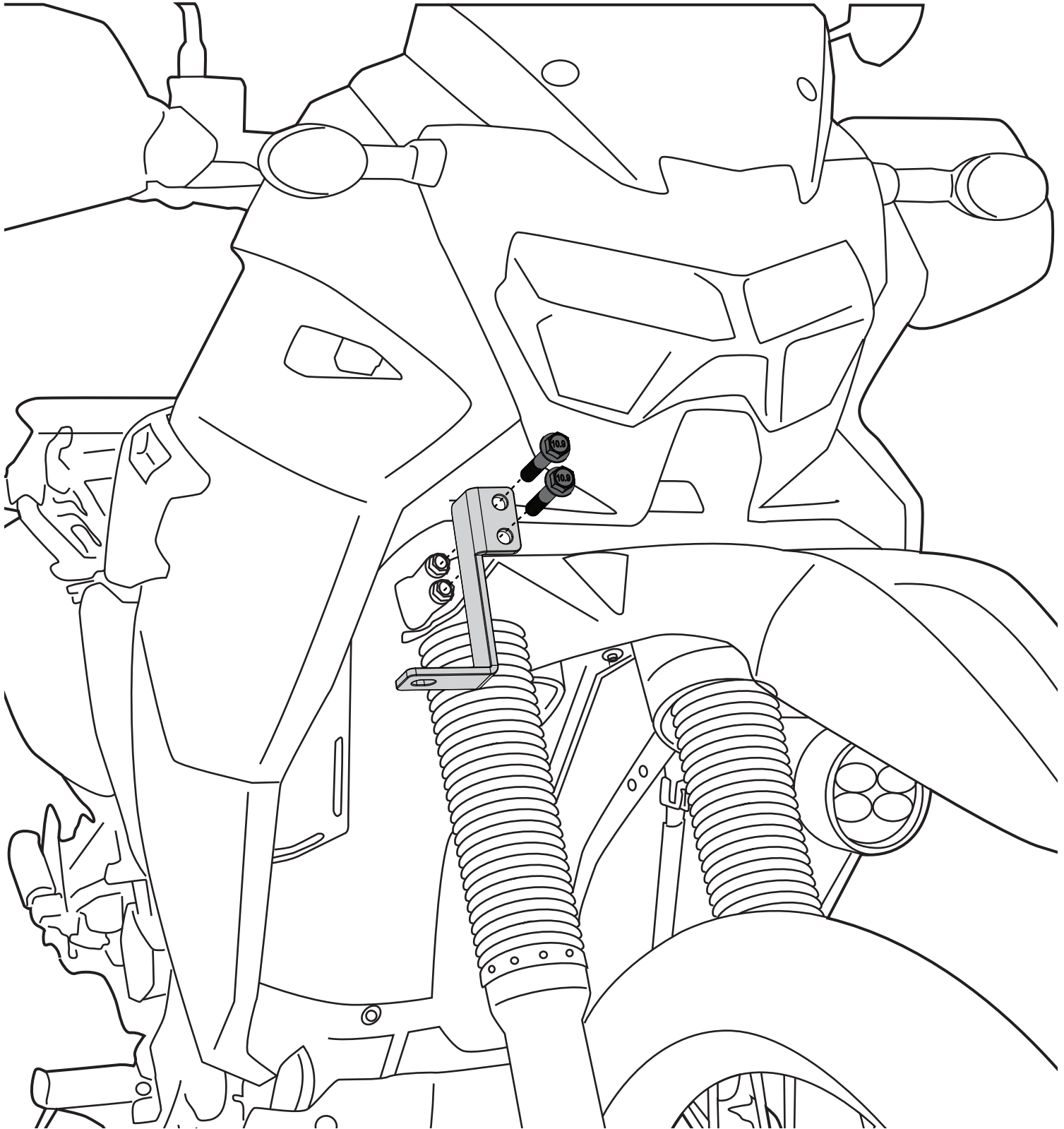
## What's In The Box?



### Kit Contents

- (a) Light Mounting Bracket-R.....(LAH.08.014).....Qty 1
- (b) Light Mounting Bracket-L.....(LAH.08.015).....Qty 1
- (c) M8 x 45mm Flanged Hex Head Screw DIN 6921.....Qty 4

**Tools Required:** 13mm wrench



## 1.1 - Lower Light Mount Installation

**Step One:** Locate the two OEM bolts that clamp the front forks on left and right side of the triple tree. Starting on one side, remove the top bolt.

**Step Two:** Rotate your Light mount bracket (a or b) side ways and bolt the top hole onto the triple tree clamp using the provided M8 x 45mm Flanged Hex Head Screw (c). Leave the bracket (a,b) loose enough to be able to swing.

**Step Three:** Remove the lower OEM bolt from the fork clamp and rotate the light mount bracket (a,b) down to align the mounting holes. Bolt it in place with a second M8 x 45mm Flanged Hex Head Screw (c) and properly tighten both.

**Step Four:** Repeat the previous steps on the other side of the bike.

**Step Five:** Use the hardware provided with your DENALI LED Light Pods to mount them to the underside of the shelf on the installed Lower Light Mount Brackets (a,b) .