



Driving Light Mount

KTM 390 Adventure
LAH.04.10400



Thank you for choosing DENALI

We know you would rather be riding your bike than wrenching on it, so we go the extra mile to make sure our instructions are clear and as easy to understand as possible. If you have any questions, comments, or suggestions don't hesitate to give our gear experts a call at 401.360.2550 or visit WWW.DENALIELECTRONICS.COM

Please Read Before Installing

DENALI products should always be installed by a qualified motorcycle technician. If you are unsure of your ability to properly install a product, please have the product installed by your local motorcycle dealer. DENALI takes no responsibility for damages caused by improper installation. **Caution:** When installing electronics it is extremely important to pay close attention to how wires are routed, especially when mounting products to the front fender, front forks, or fairing of your motorcycle. Always be sure to turn the handlebars fully left, fully right, and fully compress the suspension to ensure the wires will not bind and have enough slack for your motorcycle to operate properly.

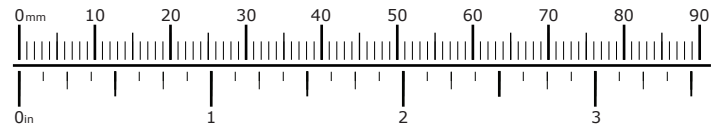
Installation Tips

We strongly recommend using medium strength liquid thread locker on all screws, nuts, and bolts. It is also important to ensure that all hardware is tightened to the proper torque specifications as listed in your owner's manual. For included accessory hardware please refer to the default torque specifications provided below. Inspect all hardware after the first 30 miles to ensure proper torque specifications are maintained.

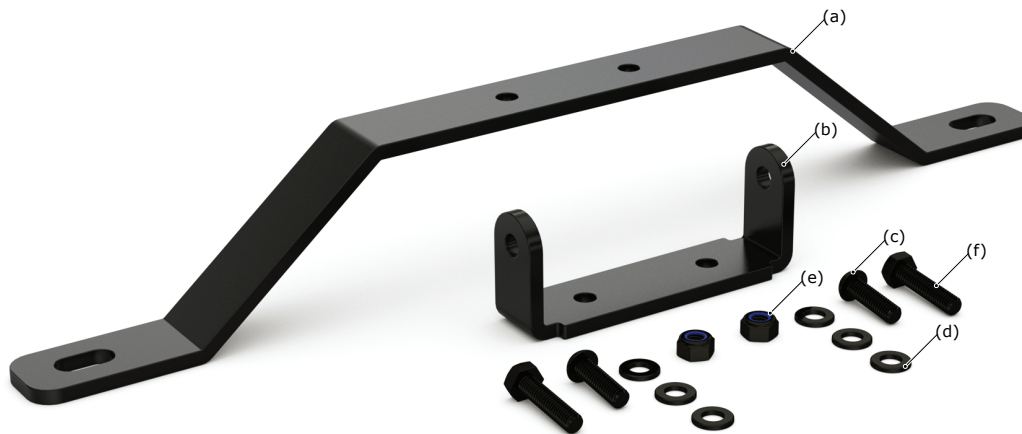
Bolt Size	in-lbs	ft-lbs	Nm
M3	10.0 in-lbs	-	1.0 Nm
M4	23.0 in-lbs	-	2.5 Nm
M5	44.5 in-lbs	3.5 ft-lbs	5.0 Nm
M6	78.0 in-lbs	6.5 ft-lbs	9.0 Nm
M8	-	13.5 ft-lbs	18.0 Nm
M10	-	30.0 ft-lbs	41.0 Nm
M12	-	52.0 ft-lbs	71.0 Nm

Hardware Sizing Guide

Not sure what size bolt you have? Use this ruler to measure screws, bolts, spacers, etc. Remember, the length of a screw or bolt is measured from the start of the "mounting surface" to the end of the screw, so only include the screw head when measuring countersunk screws.



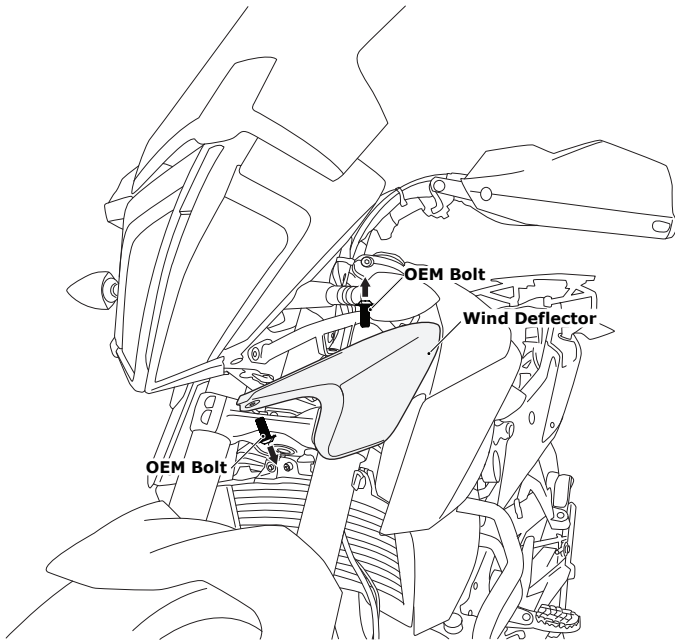
What's In The Box?



Kit Contents

- (a) Mounting Bracket.....Qty 1
- (b) Mounting Bracket.....Qty 1
- (c) M6x20 ISO 7380.....Qty 2
- (d) M6 Washer DIN 125.....Qty 6
- (e) M6 Nut DIN 985.....Qty 2
- (f) M6x25 DIN 933.....Qty 2

1. Accessing The Mounting Points



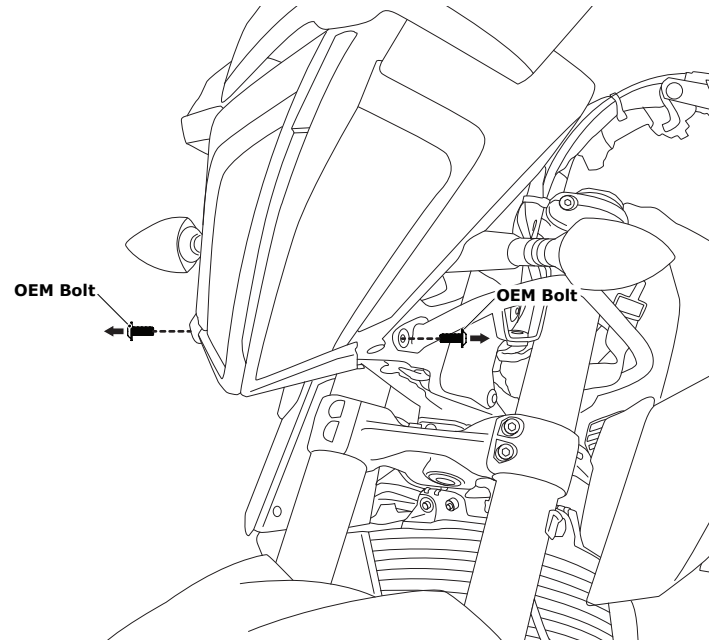
1.1 - Removing The Wind Deflectors

The wind deflectors will need to be temporarily removed from the motorcycle to complete installation of the light mounting bracket. The wind deflectors will be reinstalled once the light mounting bracket is fully installed.

Step One: Remove the upper and lower OEM bolts from the wind deflectors, there are two bolts on each wind deflector.

Step Two: Remove the wind deflectors from the motorcycle.

Note: Set the four OEM bolts aside, they will be reused to reinstall the wind deflectors once the light mounting bracket is fully installed.

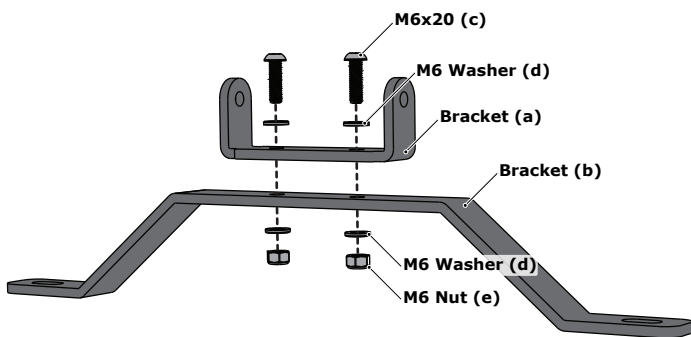


1.2 - Removing The OEM Hardware

Step One: Remove the two OEM bolts located at the front of the fairing support bar on each side of the motorcycle.

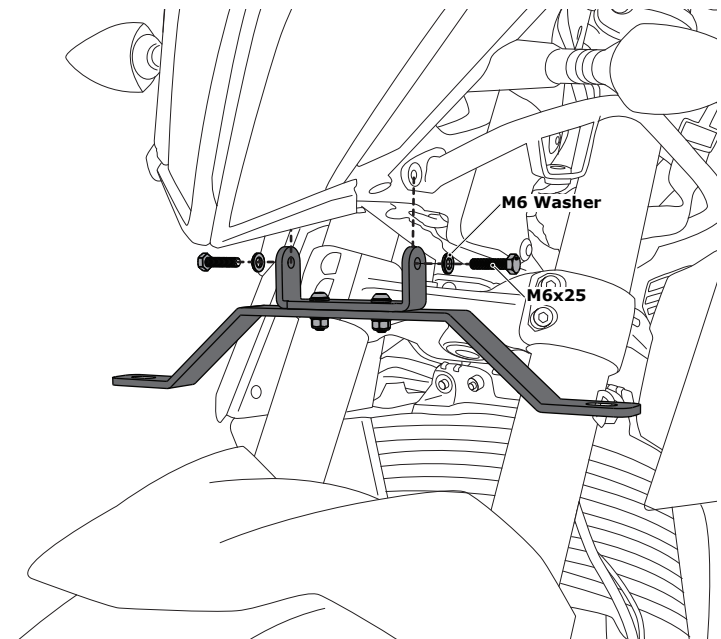
Note: These two OEM bolts will NOT be reused for installation of the light mounting bracket.

2. Installing the Light Mount



2.1 - Assembling The Bracket

Step One: Attach Bracket (a) to Bracket (b) using M6x20 Bolts (c), M6 Washers (d) and M6 Nuts (e).



2.2 - Installing The Bracket

Step One: Use the M6x25 Bolts (f) and M6 Washers (d) to attach the assembled light mounting bracket to mounting points accessed in Section 1.2.

Step Two: Reinstall the wind deflectors that were removed during Section 1.1, reusing the OEM hardware.