

APP Installation

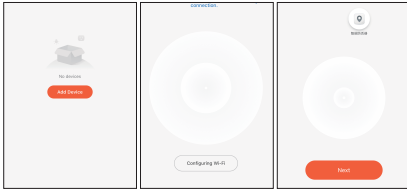
Scan the QR code with your smartphone or tablet to download the TUYA or Smartlife app. Alternatively you can search "TUYA" /"Smartlife"on App Store or Google Play to get to the respective downloads.



Pairing

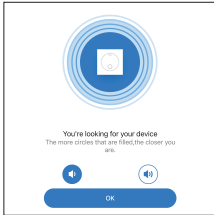
Before pairing, please turn on the Bluetooth of your smart phone.

1. Open the Tuya app,click "Add Device",and then Click "Auto Scan"
2. Long Press the smart finder and close to the mobile phone
3. Click "Next" button, Start pairing; The device icon appearing means to pair successful



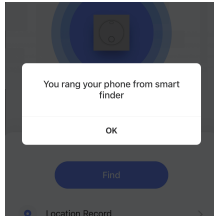
Ring Smart Finder

Click the bell icon in the app to ring smart finder which can be attached to your valuable items like keys, wallets, purses, luggage, cameras, bikes, tablets, backpacks, etc.



Ring Your Phone

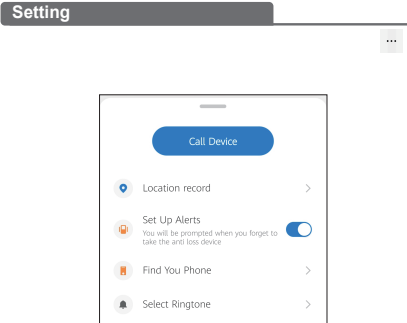
Double-click the button on smart finder to ring your phone. This can help you find your phone in seconds, even if it's on silent mode.



Lost Location

In order to use this feature, you have to activate the GPS on your smartphone.

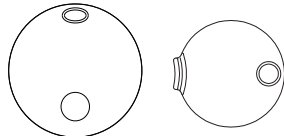
If you lose your smart finder or the object equipped with it, the last lost location will be saved automatically. You can see this location by pressing within the app.



Disconnecting Notification

Battery Replacement

1. Open the outer shell with the opening tool provided.



Specification:

Dimensions:	L37mm x W37mm x H8.5mm
Bluetooth Version:	Bluetooth 4.0 (Bluetooth Low Energy)
Range:	0~50meters (in open space)
Buzzer:	90-95dB
Indicator:	Red LED
Battery:	CR2032 button battery X1
Water-proof:	IPX7

Compatible Smartphones

iOS (iOS 8.0 or higher)	iPhone: 4S/5/5C/5S/6/6Plus/6S/SE/7/7Plus iPhone XR/iPhone SE/iPhone XS iPad: 3th Gen/4th Gen/Air/Pro or later iPad Mini or later iPod Touch 5 or later
Android (Android 4.4 or higher)	Samsung Galaxy S4/S5/S6/S7 Galaxy Note 3/4/5/6/Galaxy C5/C7/C9 Galaxy A5/A7/A9/Nexus 4/5/5X/6/6P Xiaomi A2, One Plus 7/Meizu 16xs/Vivo Y81s/ OPPO R9/Honor 7X

Note:

If your smartphone is not on this list but also uses Android 4.4 and Bluetooth 4.0, there is a good chance the smart finder will work fine, but we are not able to offer the same level of support in troubleshooting scenarios.

About Bluetooth Low Energy

This smart finder uses Bluetooth Low Energy (BLE) technology to help you locate your items. While Bluetooth technology is a wireless technology, there are significant differences between Bluetooth, Wi-Fi, and GPS technology. The Bluetooth range of smart finder is up to 50m in open space. Bluetooth is most effective at the 10m range, depending on the environment.

Aide Smart Bluetooth Key Finder