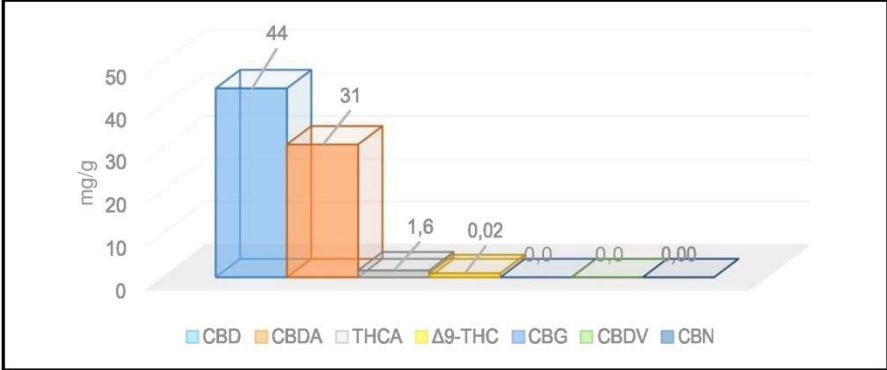


# Certificate of analysis 200/2018/012

**CBD RELIEVE FULL SPECTRUM CAPSULES**

Analyzed by E&H Services, Inc.  
 The holder of a permit number 82/2017 for the handling of addictive substances, according to Law 167/1998, issued by the Ministry of Health Czech Republic



Date of issue: 10.05.2018  
 Responsible researcher: Dr. Kurková

| SAMPLE: 319 | Capsule Mix   |        |
|-------------|---------------|--------|
| Compound    | Values (mg/g) | Mass % |
| CBD         | 44            | 4,4    |
| CBDA        | 31            | 3,1    |
| THCA        | 1,6           | 0,16   |
| Δ9-THC      | 0,20          | 0,02   |
| CBG         | 0,93          | 0,093  |
| CBDV        | 8,4           | 0,84   |
| CBN         | 0,27          | 0,027  |

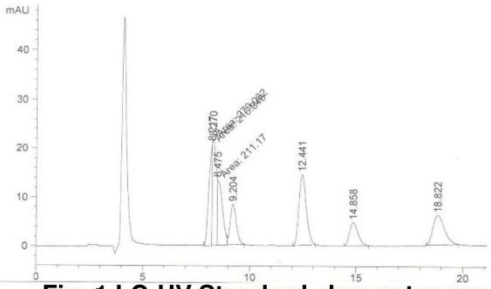


Fig. 1 LC-UV Standard chromatogram

**Analytical procedure: Homogonization, extraction in methanol(or acetone), analysis on LC-UV.**

This report and all information herein has been confirmed by a certified lab, and are based on protocol of analysis no.200/2018 and shall not be reproduced, except in its entirety, without the written consent of laboratory. The report is for informational purposes only and should not be used to diagnose, treat, or prevent any medical related symptoms. Results are applicable only for samples tested, and for the specific tests conducted. All tests carried are done so under strict certified laboratory protocols, guidelines and supervision. Contact us for more information at [www.cannabilab.eu](http://www.cannabilab.eu)

# Certificate of analysis 200/2018/012

Analyzed by E&H Services, Inc.

The holder of a permit number 82/2017 for the handling of addictive substances, according to Law 167/1998, issued by the Ministry of Health Czech Republic

| SAMPLE: 319 | Entourage Capsule Mix |                |
|-------------|-----------------------|----------------|
| Compound    | Values (mg/g)         | Limits (mg/g)* |
| Mercury     | <0,00010              | 0,0001         |
| Arsenic     | 0,00030               | -              |
| Cadmium     | <0,00010              | 0,0010         |
| Lead        | <0,00010              | 0,0030         |

\* Commission regulation (EC) no. 629/2008

**Analytical procedure:** Mineralization, determination on ICP-OES and AMA

## Microbial analysis:

|                                  |            |          |
|----------------------------------|------------|----------|
| Escherichia coli                 | CFU/g      | negative |
| Staphylococcus aureus            | CFU/g      | negative |
| Enterobacteriaceae               | CFU/g      | negative |
| Coagulase-positive staphylococci | CFU/g (ml) | negative |
| Listeria monocytogenes           | CFU/g (ml) | negative |
| Yeasts and Moulds                | CFU/g (ml) | negative |
| Salmonella                       | CFU/25g    | negative |

This report and all information herein has been confirmed by a certified lab, and are based on protocol of analysis no.200/2018 and shall not be reproduced, except in its entirety, without the written consent of laboratory. The report is for informational purposes only and should not be used to diagnose, treat, or prevent any medical related symptoms. Results are applicable only for samples tested, and for the specific tests conducted. All tests carried are done so under strict certified laboratory protocols, guidelines and supervision. Contact us for more information at [www.cannabilab.eu](http://www.cannabilab.eu)



Dr. Tomas Ocelka, head of laboratory