



QUICK START MANUAL

NOTE: You will not be able to use this library without a fully licensed version of Kontakt (version 5.6.5 or later). It is not compatible with the free Kontakt Player.

A. DOWNLOADING

1. Login to your online account at www.slateandash.com/account and click on the order number in your order history.

ORDER HISTORY

| Order | Date | Payment Status | Fulfillment Status | Total |
|-------|---------------|----------------|--------------------|-------|
| #1027 | June 05, 2018 | Paid | Fulfilled | £149 |

2. Click on the 'download here' link.

ORDER #1027


Placed on June 05, 2018 11:55PM

| Product | SKU | Price | Quantity | Total |
|--|-----|-------|----------|-------------|
| AURAS (+ VINYL) - Kontakt Library Only Fulfilled June 05, 2018 (download here) | | £149 | £149 | £149 |
| Subtotal | | | | £149 |
| Total | | | | £149 |


3. This will take you to a SendOwl page from which you can download your copy of the library.

NOTE: You will have 3 download attempts of the library. If you need any further downloads, contact us directly at support@slateandash.com.

File Download

 **AURAS (+ VINYL) - Kontakt Library Only**
5 downloads remaining before 06/06/2019 04:55:53

[Download](#)

Powered by  SendOwl

B. SETTING UP WITH ROLI DEVICES

If you are using a ROLI product such as the Seaboard or Lightpad, make sure you've downloaded the latest version of the ROLI Dashboard from your ROLI account.

To set up the ROLI Dashboard with the settings for AURAS, there are some presets included in your download. These are inside the **ROLI Dashboard Presets** folder. This contains a **LittleFoot** folder that needs to be copied across to the relevant folder on your computer.

MAC

Copy the provided **LittleFoot** folder into **Documents/ROLI**.

If you are notified that 'A folder named "LittleFoot" already exists in this location', click **Merge**.

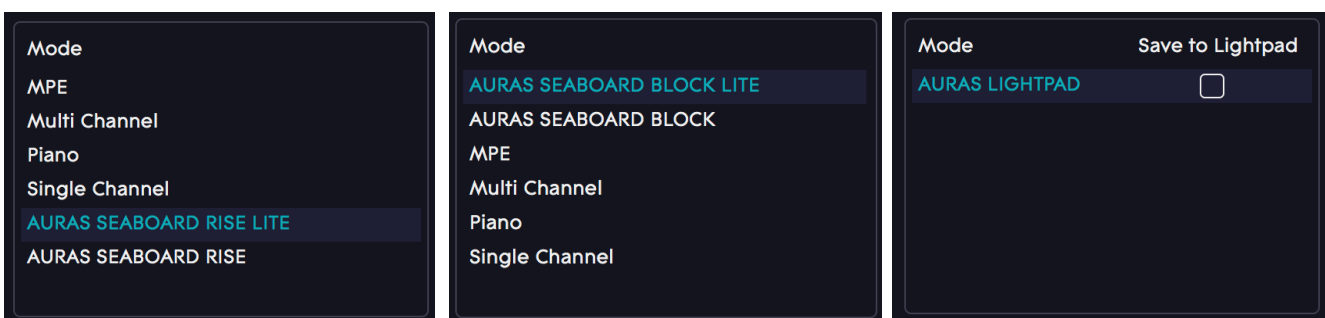
Do not click **Replace**, this will remove the default presets that ROLI provide with your Dashboard.

WINDOWS

Copy the provided **LittleFoot** folder into **Documents/ROLI**. If you are asked 'Do you still want to merge this folder with this one?', click **Yes**.

Do not replace the files already inside the **LittleFoot** folder, this will remove the default presets that ROLI provide with your Dashboard.

The AURAS presets will then appear in the mode section on the left hand side of the ROLI Dashboard. Your ROLI device is now ready to work with all AURAS patches.



NOTE: Seaboard (both RISE and BLOCKS versions) will work 'out of the box' for both AURAS and COLOURS instruments once the ROLI Dashboard presets are installed. However, to assign parameters to Lightpad BLOCKS in the COLOURS modulation matrix, you will need to assign the Lightpad's MIDI CC numbers.

If you would like to create your own presets for the ROLI Dashboard, the following settings are recommended:

Seaboard

| | |
|---------------------|----------|
| MIDI Start Channel: | 2 |
| MIDI End Channel: | 11 |
| Use MPE: | ON |
| Pitch Bend Range: | 12 |
| Octave: | 0 |
| Transpose: | 0 |
| Slide CC: | 74 |
| Slide Mode: | Absolute |
| Piano Mode: | OFF |

Lightpad

| | |
|------------|----------|
| Mode: | XYZ Mode |
| X axis CC: | 90 |
| Y Axis CC: | 1 |
| Z Axis CC: | 11 |

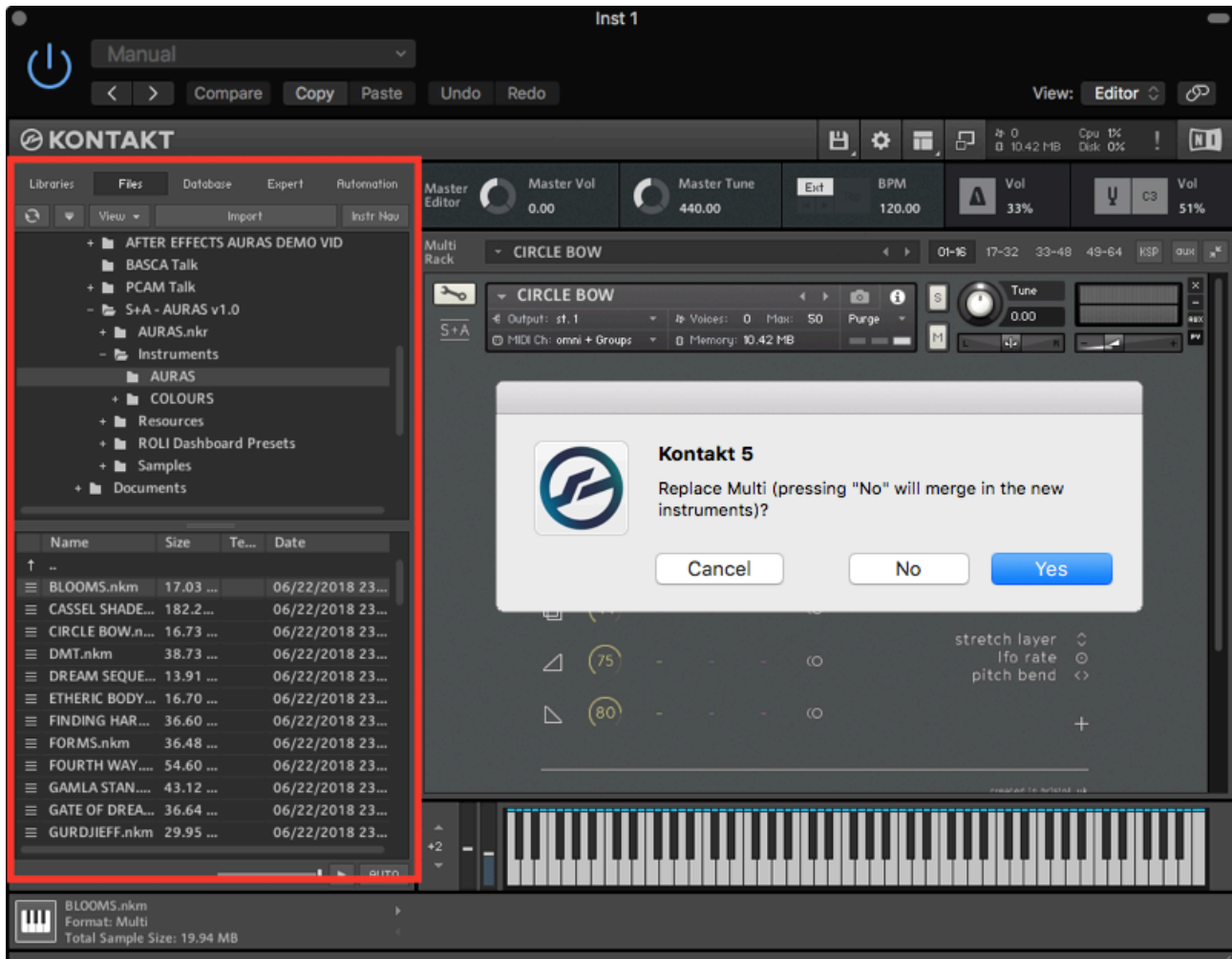
C. SETTING UP WITH MIDI CONTROLLERS

If you are using a MIDI keyboard or other MIDI controller, the sound shaping controls in AURAS patches will be automatically assigned to the mod wheel and aftertouch (aftertouch controls are also mirrored on CC11/expression). You can also manually assign any of the shaping parameters to your preferred MIDI CC numbers in the AURAS GUI using the MIDI learn feature.

In the COLOURS GUI you will need to assign modulation matrix controls using either the MIDI learn feature or by manually selecting the CC number in the modulation source mapping editor.

D. KONTAKT

Because it is not currently a Kontakt Player library, AURAS requires the full version of Kontakt and cannot be added to the **Libraries** tab. Instead, you can find the library by browsing to the location that you have saved it in the **Files** tab on the left of the Kontakt interface.



Once you have navigated to the library folder, patches are loaded by double clicking their name.

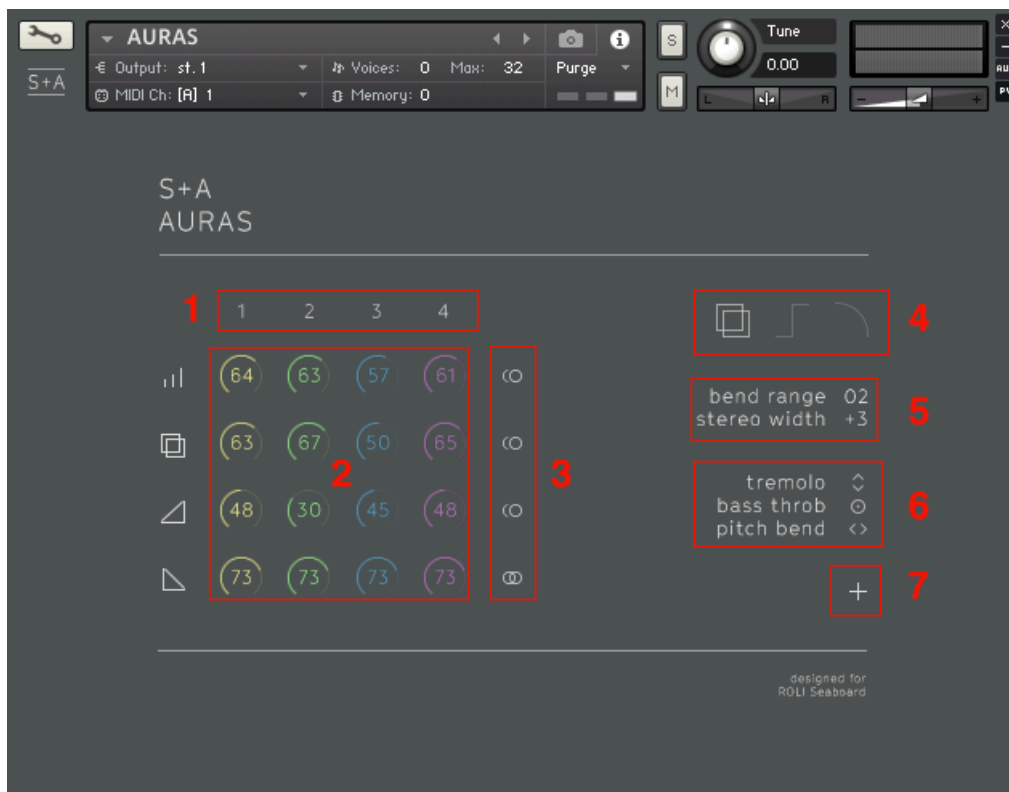
NOTE: Instead of the .nki instrument file you would normally associate with Kontakt, all AURAS and COLOURS patches are loaded in the .nkm Kontakt 'multi' format. This is so the patches are compatible with MPE (MIDI Polyphonic Expression) controllers such as the ROLI Seaboard.

To select a new patch, double click its name in the **Files** tab. You will be prompted with the message 'Replace Multi (pressing "No" will merge in the new instruments)?'. Press **Yes** to replace the previous instrument. Press **No** to add the instrument without removing the previous one.

E. USING AURAS

The AURAS selection of patches contain curated multi-layered instruments, with each patch programmed, scripted and designed individually. Layers and effects are interacted with using the multi-dimensional gestural controls of the Seaboard, or can be mapped to the knobs and sliders of any MIDI CC controller.

GUI

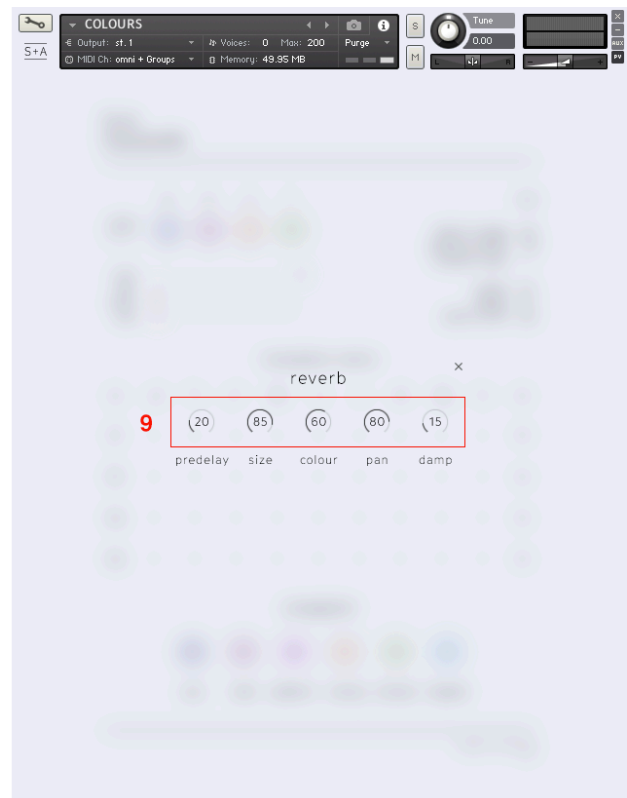


1. **Layer ON/OFF** - Turn constituent layers ON and OFF.
2. **Mixer** - Volume, reverb, attack and release controls for each layer.
3. **Link** - Link the mixer controls so that parameters are controlled simultaneously.
4. **Global Effects** - Reverb ON/OFF, Hard Limit ON/OFF and Global Low Pass Filter ON/OFF. Click through on the Global Low Pass Filter to assign it to different modulators.
5. **Global Controls** - Pitch bend range and stereo width.
6. **MIDI Map** - Click on the icons to assign MIDI CC numbers to any of the patch parameters.
7. **Patch Notes** - Click to reveal additional notes for each patch.

F. USING COLOURS

The COLOURS environment let you create your own dynamic controllable textures from the source material used for the AURAS patches. It features volume and filter envelopes, a controller assignable modulation matrix with randomising features, multiple reverb options available as both sends and inserts, delay, and pitch drifting/tape wow effects.

GUI



1. **Envelopes** - ADSR envelopes for volume and filter.
2. **Basic Modulation** - Cutoff, resonance, envelope modulation amount and velocity modulation amount controls for filter; velocity modulation amount control for volume.
3. **Global Controls** - 2 pages of global controls. Page 1: pitch bend range, stereo width, random pan per note, noise, delay, pitch drift; click on noise, delay or pitch drift to edit parameters. Page 2: close, room, hall, cathedral and space convolution reverbs; click to edit parameters. Reverbs can be switched from send effects (which are independent) and insert effects (which run in a chain and can go 100% wet).
4. **Mod Matrix Effects** - Click the icons to edit parameters for the mod matrix effects (see 9). *Shuffle* button on far left will randomise all effect parameters.
5. **Mod Matrix Sources** - 2 external modulators (MIDI) and 2 internal LFOs. Click the external modulator icons (top) to select or learn a MIDI CC numbers. Click the LFO icons (bottom) to adjust parameters.
6. **Mod Matrix** - Sliders to controls modulation depth using the *mod matrix sources* as sources and the *mod matrix effects* as destinations.
7. **Shuffle** - randomise the mod matrix.
8. **Arpeggiator** - With arp mode (off, on, latch, latch learn), rate, pattern, swing, octave and repeat. There is no current MPE response for the arpeggiator.
9. **Edit** - Various effects and parameters can be edited by clicking on their name/icon. This window will appear with relevant additional parameters.

G. FREQUENTLY ASKED QUESTIONS

DO I NEED A SERIAL NUMBER TO ADD AURAS TO KONTAKT?

Because it is not currently a Kontakt Player library, AURAS requires the full version of Kontakt and cannot be added to the Kontakt library tab. Instead, you can find the library by browsing to the AURAS folder in the Files tab on the left of the Kontakt interface.

WHAT DOES 'LITE' MEAN IN THE ROLI DASHBOARD PRESETS?

The ROLI Dashboard presets for AURAS run on MIDI channels 2 to 11. The LITE presets reduce this range to channels 2 to 5. This is essentially a limitation on MPE polyphony to keep down CPU usage for less powerful machines.

WHY ISN'T THE PITCH BEND RANGE SET TO 12 FOR ALL AURAS PATCHES?

The pitch bend range is set to 2 semitones as a stylistic choice that worked for us. If you'd like to do pitch-per-note slides, you can set the range to 12 semitones using the 'bend range' control in the upper right corner of the interface.

WHY ARE THE AURAS PATCHES MULTIS (.NKM) INSTEAD OF INSTRUMENTS (.NKI)?

To receive the multiple MIDI channels used in MPE, AURAS uses .nkm patches.

CAN I LOAD MULTIPLE AURAS PATCHES INTO KONTAKT SIMULTANEOUSLY DESPITE THEM ALREADY BEING MULTIS (.NKM)?

Yes — when opening an additional patch you will be prompted with the message 'Replace Multi (pressing "No" will merge in the new instruments)?'. Press 'No' and the additional instrument will be added without removing the previous one. If you press 'Yes' the previous instrument will be replaced.

IS AURAS CPU INTENSIVE?

Due to the requirements of MPE and because a wide range of modulation and processing tools are used in the COLOURS environment, it is recommended that you have an up-to-date and powerful computer to get the best out of AURAS.

WILL AURAS BE AVAILABLE AS A KONTAKT PLAYER LIBRARY?

Currently AURAS requires the full version of Kontakt, but we have plans to convert it to a Kontakt Player library in the coming months. This means it will be included with a free version of Kontakt and will be NKS compatible.

WHERE IS MY AURAS DOWNLOAD LINK?

If you log into your slateandash.com account and click the order number, you will be presented with a 'download here' button. For more detailed instructions see the AURAS quick start guide.

HOW DO I EXTRACT THE ZIP FILE?

WinRAR works best for Windows users. If you're on a Mac, just open the ZIP file as usual.

IS AURAS VAT INCLUSIVE?

Slate + Ash is currently not a VAT registered company so there is no VAT included in the price for AURAS. We will be registering for VAT in the coming months, after which the cost of AURAS will be £199 (so get it while its cheaper!).

DO YOU OFFER EDUCATIONAL DISCOUNTS?

Once the introductory offer is over, we will offer discounts to those in education or music therapy. Get in touch at info@slateandash to learn more.

DOES AURAS WORK WITH NORMAL MIDI CONTROLLERS?

Yes, everything in AURAS that can be linked to one of the ROLI Seaboard's gestural controls can also be linked to a MIDI CC number — meaning you can link it to the knobs and sliders of any MIDI controller.

This is done using a MIDI learn function — you simply twiddle a knob to learn its MIDI CC number.

The difference is that where the ROLI Seaboard's controls have the ability to affect notes individually, other MIDI controllers affect all notes at once.

DOES AURAS WORK WITH OTHER MPE CONTROLLERS SUCH AS THE HAKEN CONTINUUM OR THE LINNSTRUMENT?

AURAS is set up by default to work with the ROLI Seaboard, but it works with other MPE controllers too.

Each parameter in AURAS that reacts to MIDI from the Seaboard also reacts to a MIDI CC number — all you need to do is set your MPE device to send the correct CC numbers (CC01 for slide, CC11 for press, CC127 for glide) and everything will work.

H. END USER LICENSE AGREEMENT

BY DOWNLOADING AND INSTALLING AURAS YOU AGREE TO THE FOLLOWING:

The AURAS library is licensed, not sold to you. This license is personal and non-transferrable. As an owner of the library the following apply:

YOU MAY:

- use AURAS in your own compositions (including library music) and/or commercial work for clients/media, without any restrictions or additional fees;
- install AURAS on multiple machines, as long as you are the person who is using the library and you are not sharing your license with others.

YOU MAY NOT:

- make copies of this library, as a whole or in part, with the intent to re-distribute, sell or give them away - this includes making available any of the content on a network, e.g. through internet file sharing services;
- re-use or re-package any of the AURAS content in another virtual instrument or sample library.

Installing the AURAS library implies that you agree to the above terms and conditions.

REFUNDS

Downloaded libraries can't be returned, so we can't provide refunds. We may choose to do so at our own discretion, but please be aware that as soon as you've downloaded it, you can't return it.

RESPONSIBILITY

Using this product and any supplied software is at the licensee's own risk. Slate + Ash holds no responsibility for any direct or indirect loss arising from any form of use of this product.

If you have any questions, concerns or feedback please email us at: support@slateandash.com