



**SIMBOX**

**INSTRUCTION MANUAL**

## STEP ONE

Organise pipes as image below in size order for ease of assembly



## STEP TWO

Start building Simbox by placing base corner / angle units and joining required lengths to make frame as shown on image.



## STEP THREE

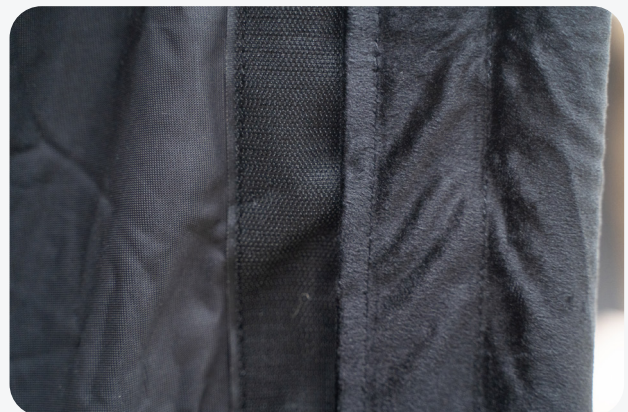
The outer fabric of the frame has two sides – plush side is to be the inner side of the Simbox. This also has the brand logo included on the left hand side of the bay.



Drape the fabric plush side to the inner over the frame as shown on images. Ensure fabric is centre set to the frame. Unlatch the top beam on the rear end of the frame and slide fabric down to secure.

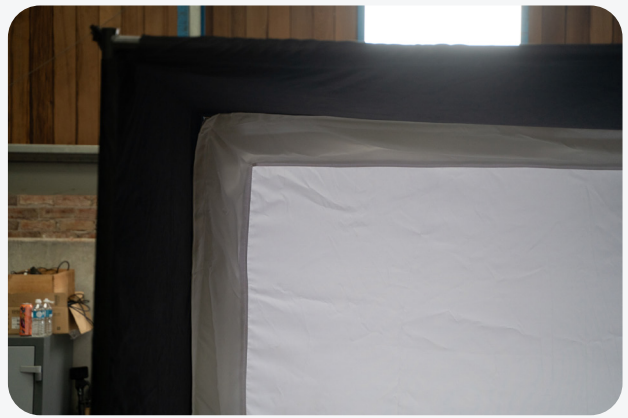


Attach Velcro straps on all sides to secure and tighten fabric. On completion your Simbox should look like image four.



## STEP FOUR

Attach inner side of projection screen with Velcro straps to the corresponding Velcro on the black fabric to secure.



Secure screen on all four sides with Velcro frame on the inner section of bay.



Enjoy your Simbox.





## **CONTACT INFORMATION**

[Sales@golfbays.co.uk](mailto:Sales@golfbays.co.uk)