

Lens Change - User Guide

EOD Stealth performance eyewear combines ballistic protection with comfort and style. They feature an interchangeable lens system that allows wearers to adapt them for any scenario.

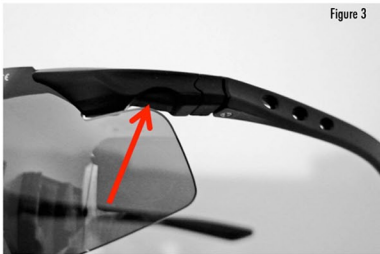
Lenses

To change the lens, simply hold the frame gently and flex it upwards away from the lens frame recess to release and then disengage the lens from the centre of the frame - figures 1 & 2.



Arms

To remove the arms and fit the retaining head strap simply depress the clip below the front of the frame - figures 3 & 4. This is a tight fit and is designed this way to prevent any accidental separation.



RX Inserts

To fit the RX ophthalmic insert place it inside the main eyewear frame and push until it clips in the recess hole - figures 5 & 6. Removal is a reversal of this procedure.

